

Blooming in the Dark (in Peter's Garden)

approximately 86"x86"
To make the quilt pictured:



You need:

- 6¼ yards black
- 2 5/8 yards dark orange
- 2 yards floral
- 1¼ yards of white low volume background
- ½-3/4 yards of strips for binding. I use 2½" strips.

There are two blocks that make up the main part of this quilt plus a setting block that needs to be pieced. They look like this: I will usually show the black as gray just so you can see the lines. They finish at 8.5" before being sewn into the quilt – they finish at 8".

Block 1:



Block 2:



Block 1 (with black) you need 25.

Block 2 (with white) you will need 16.

Cut:

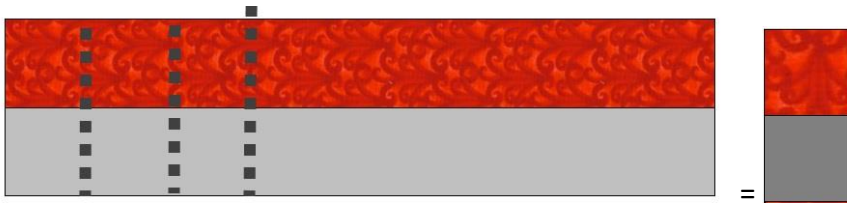
Block 1: for one block (total for the quilt in parenthesis)

- From floral:
1 – 4½" square for centers (25)
- From black:
4 – 2½" x 4½" rectangles (100)
4 – 1½" x 2½" rectangles (100)
- From orange:
8 – 2½" squares (200)
- From both floral and black:
4 – 1 ½" black squares (100)
4 – 1 ½" floral squares. (100)

It is best to make these last two (shaded in gray) by cutting a 1½" x WOF strip of floral and one of black. Sew together and cut off segments. You will need 4 of each segment for each block. (total of 100 sets)



Then trim off 1 ½" segments like this:



Block 2: for one block (total for the quilt in parenthesis)

- From the floral:
1 - 2½" square (16)
8 - 2½" squares for star tips (128)
- From orange:
2 - 1½"x2½" strips (32)
2 - 1½"x4½" strips (32)
- From white background or low volume print:
4 - 4 - 2½" x 4½" rectangles (64)
4 - 1 ½"x2 ½" rectangles (64)
- From both floral and white:
4 - 1 ½" white squares and (64)
4 - 1 ½" floral squares. (64)

It is best to make these as mentioned above for the black and orange ones using strip piecing. (64 sets)



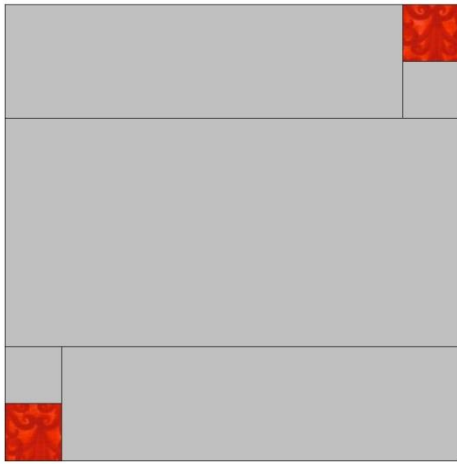
Sashing and cornerstones (for the whole quilt)

- 20 black 3"x3" squares (cornerstones)
- 20 orange 3"x3" squares (cornerstones)
- 20 floral 3"x3" squares (cornerstones)
- 100 3"x8½" black rectangles for sashing strips

Setting block: (You need 8 to be cut in half for total of 16 setting triangles. *Warning: these will be on the bias when finished.*) Will demonstrate under how to make this block;

For each block:

- From Black –
2 – 2½" x 11½" rectangles
1 - 8½"x12½" rectangles
- From orange and black: (if you have any leftover from piecing your main block 1, use those)
2 – 1½" squares of each to make a segment of both.
Block looks like this: (12½" square)



Corner setting block:

Cut 2 – black 8½” squares and cut once in half across the diagonal for a total of 4 triangles for your four corners
 Here is a nice website with diagrams if you don’t understand.

<http://www.stcroixquilters.com/setting%20triangles.htm>

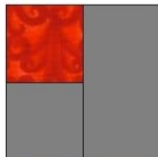
Borders will be discussed later under how to put together this quilt.

How to Make the Blocks:

Block 1:

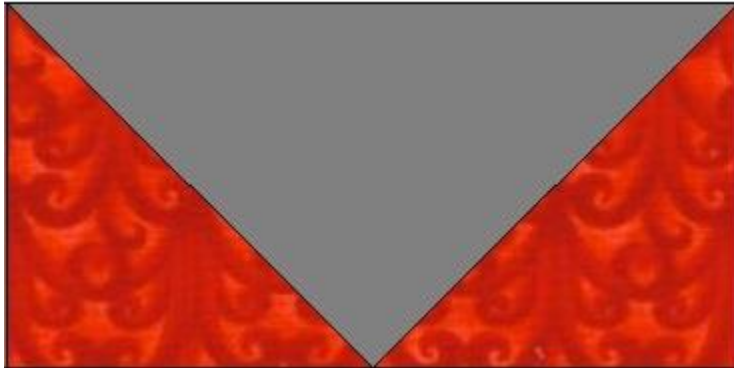


- Using your previously made strip pieced small units (■), make square units using one of these and a black rectangle 1 ½”x2 ½”. Like this:



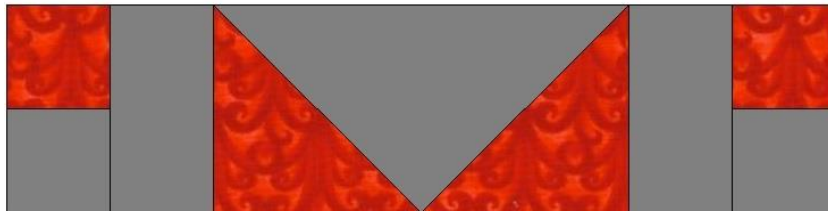
Make 4 per block. You will need 100 for the quilt.

2. Create the star points:
Using your black $2\frac{1}{2}$ "x $4\frac{1}{2}$ " rectangle, "snowball" the corners to make this unit: (if you do not know how to snowball a corner, please check this link: <https://www.craftsy.com/blog/2013/12/snowball-quilt-block-tutorial/>)



Make 4 per block. (100 needed for the quilt).

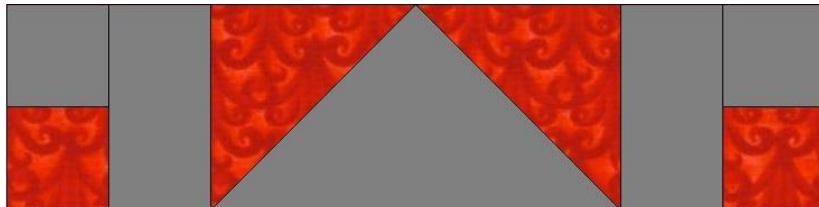
3. Now, put the block together:



+




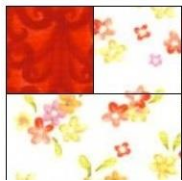
+



Block 2:



- Using your previously made strip pieced small units () , make square units using one of these and a white background rectangle $1\frac{1}{2}'' \times 2\frac{1}{2}''$. Like this:



Make 64.

- Create the star points:
Using your white $2\frac{1}{2}'' \times 4\frac{1}{2}''$ rectangle and $2\frac{1}{2}''$ squares, “snowball” the corners to make this unit:



Make 64.

- Make your centers.
Using your $2\frac{1}{2}''$ floral squares, add the orange strips to the sides to make a $4\frac{1}{2}'' \times 4\frac{1}{2}''$ square.



+



+



=



Make 16.

4. Now put together this block:



Make 16.

Here's a real block in the process:



Block 3: (side setting triangle) in black with orange corner blocks



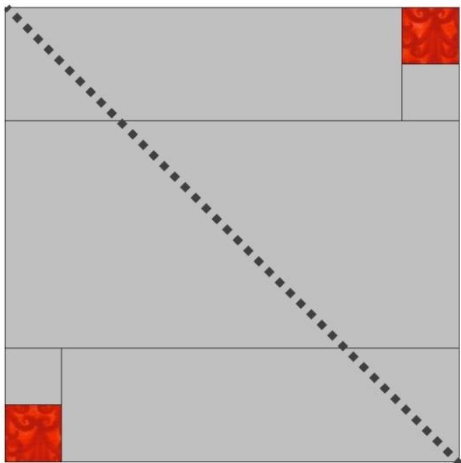
Sew first the orange/black units to the 2½”x11½” rectangles. Make 2.



Sew this unit to the black 8½”x12½” rectangles as pictured above. Press well.

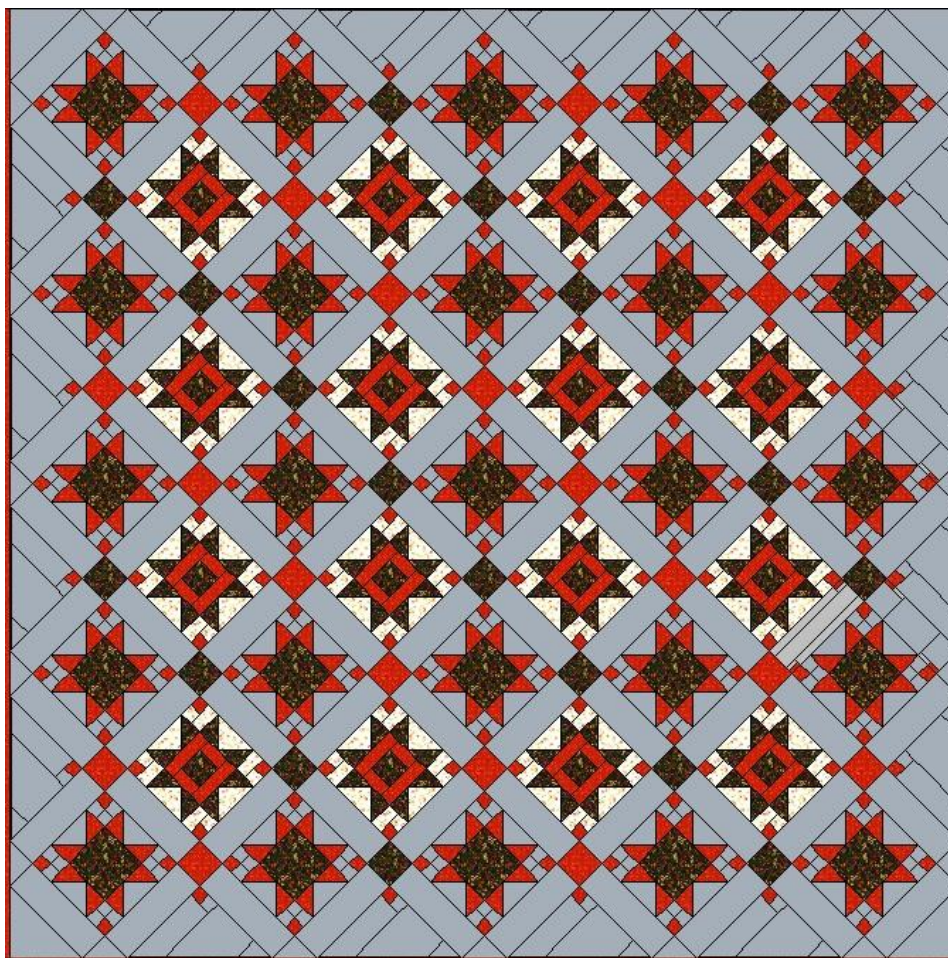
Make 8.

Cut diagonally as indicated to make 16 setting triangles. Note: These will leave a bias edge -- I will give special instructions later on what to do to minimize stretching before adding borders.

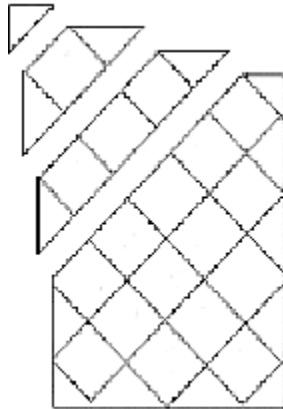


How to make this quilt:

1. **Construct your blocks as shown**
2. **Lay out completed blocks according to this diagram: At this point, just ignore the borders as we are working on the center layout. Don't forget "gray" is "black".** *I am putting a lot of pictures at the end of these instructions to help you "see" what I did.*



3. **Sew together in rows.** Use the diagrams to help you. Don't forget the sashing rows with cornerstones.



After sewing all sides and the 4 corners on, you will need to trim up your sides. Before you do that, "stay stitch" just outside the eventual stitching lines since your edges are all bias. Do this before you trim and your stretching will be minimal if at all. I will put pictures at the very end of this pattern of this whole process.

4. **Add borders** as pictured above but after the center is together.

- Border 1 – orange I demonstrate in pictures the best way to do these borders. But EQ says your measurements will be cut 2 – 1½" x 74¾" (sew to sides) and 2 – 1½" x 76¾" (sew to top and bottom).
- Border 2 – black 5" x WOF. I demonstrate in pictures the best way to do these borders. But EQ says your measurements will be cut 2 – 5" x 76¾" (sew to sides) and 2 – 5" x 86¾" (sew to top and bottom)

5. **Press well.**

6. **Sandwich**, using whatever type of batting and backing you prefer

7. **Quilt** as desired.

8. **Bind**, using whatever method you wish.

I quilted mine with a variety of stitches like this:





Congratulations! Your quilt is finished!

Enjoy!

Keep looking for pictures as I did the layout, trimming and borders.

Pictures to go with this quilt on the layout, staystitching, and borders:

1. Lay out the rows as indicated. They are already sewn together in groups with a sashing strip in between them.



2. Put the rows of sashing strips and cornerstones in between the rows.



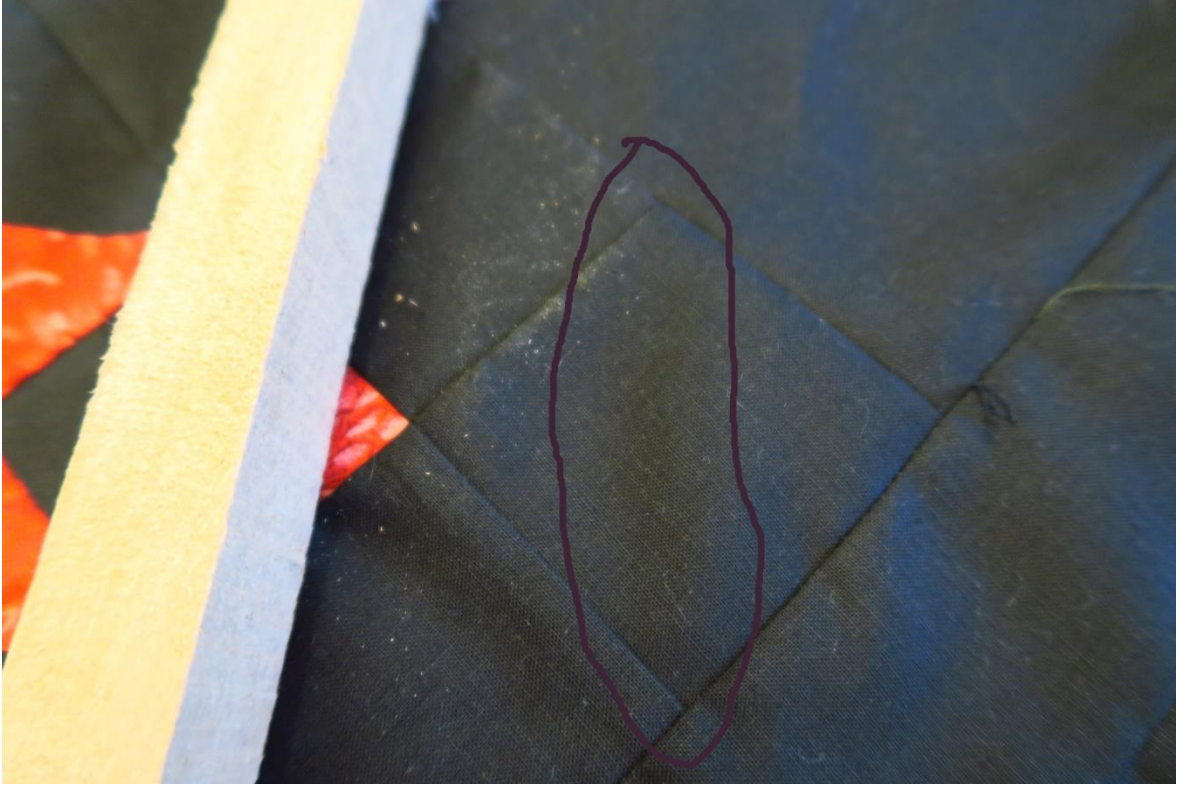
- Put in side setting triangles: (mine are waaay too big – first time I'd ever done something like this and figured big is better than too small!)



- Sew it all together like that. I left off the corner triangles at this point.



5. Find a straight edge (unfortunately I don't have a meter stick or a yard stick – so looked around and found a piece of wood—looked for hubby's long straight edge he uses, but he's not here to ask...and I couldn't find it). Find the black cornerstones. Note them. Use them as a marking point.



6. Use a pencil, white tailor's chalk or something that will show up on the black and mark a line on the top, right down the middle of those cornerstones. That is, hopefully, your stitching line.



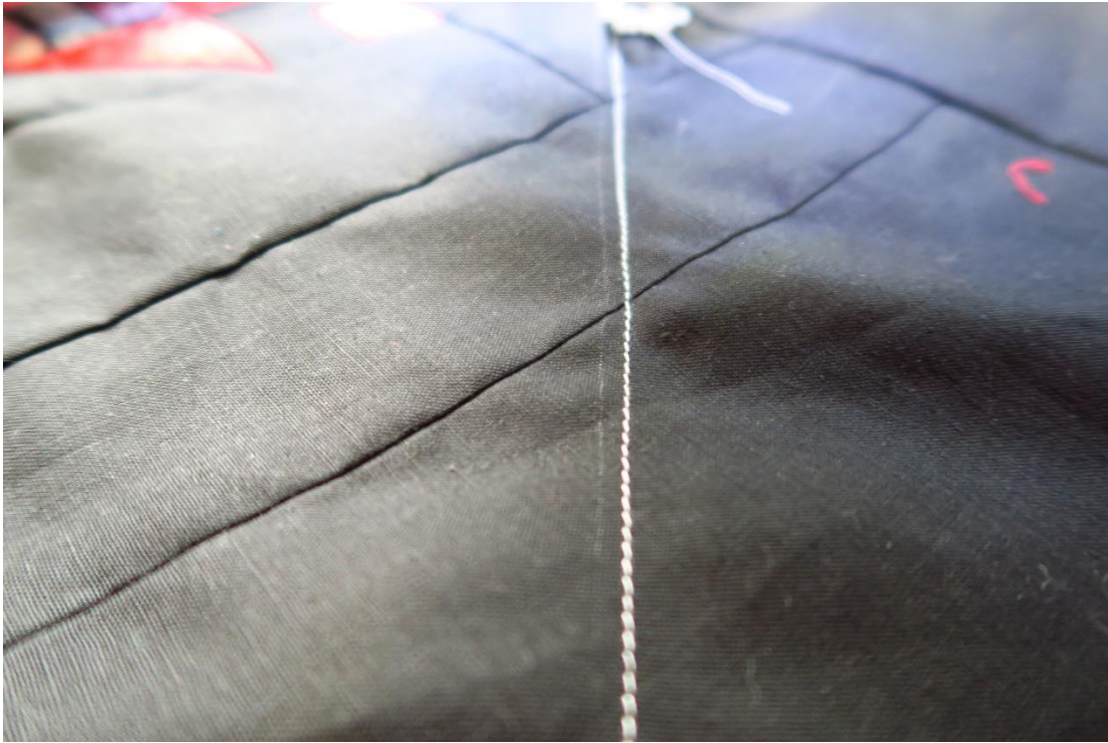
Another pic



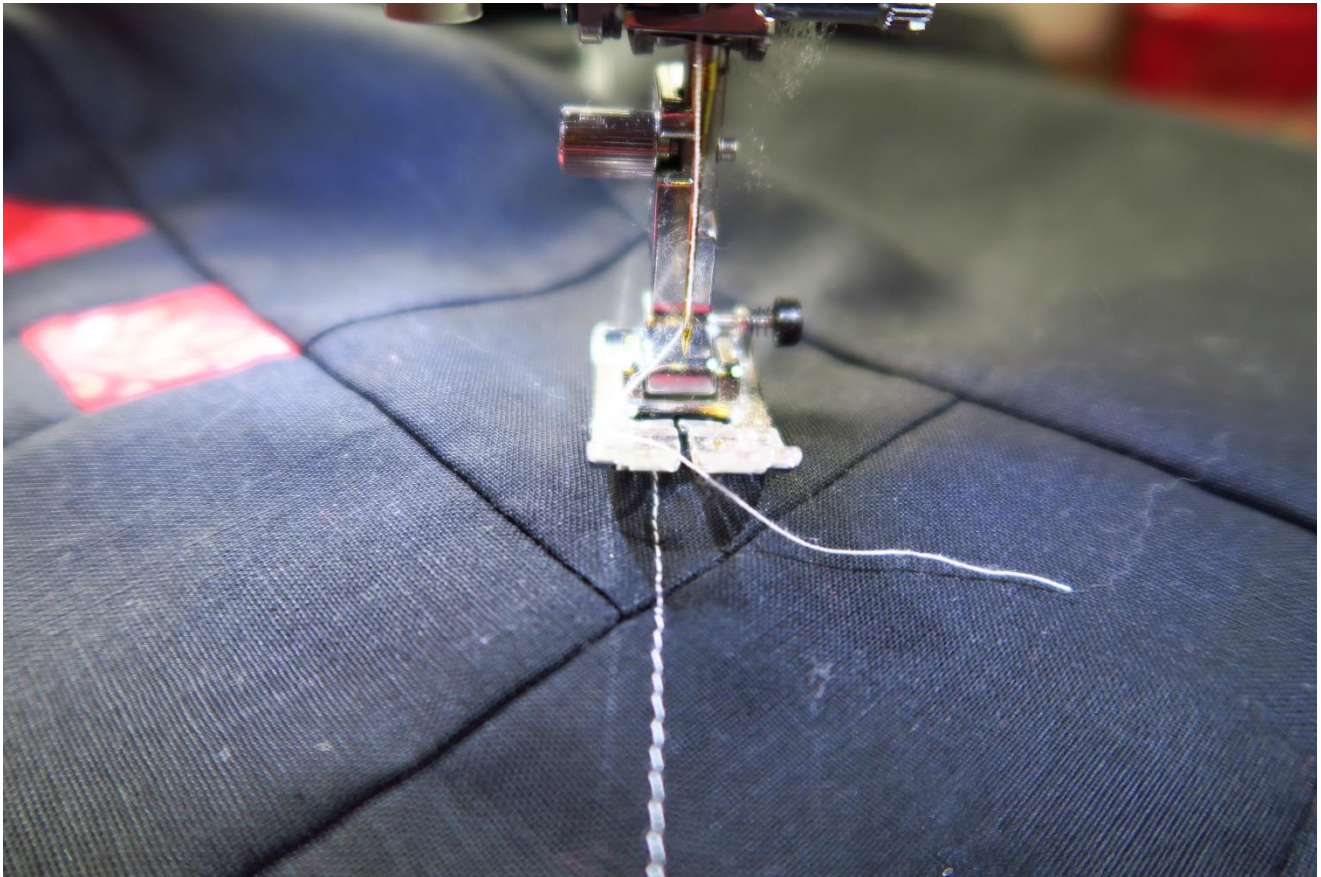
7. Go to sewing machine and sew just to the outside of the pencil or chalk line about 1/8". Use a regular length stitch. Go all the way around. This is called "staystitching".



Another picture:



Here you can see that I am just to the “outside” of that pencil line on the cornerstone.



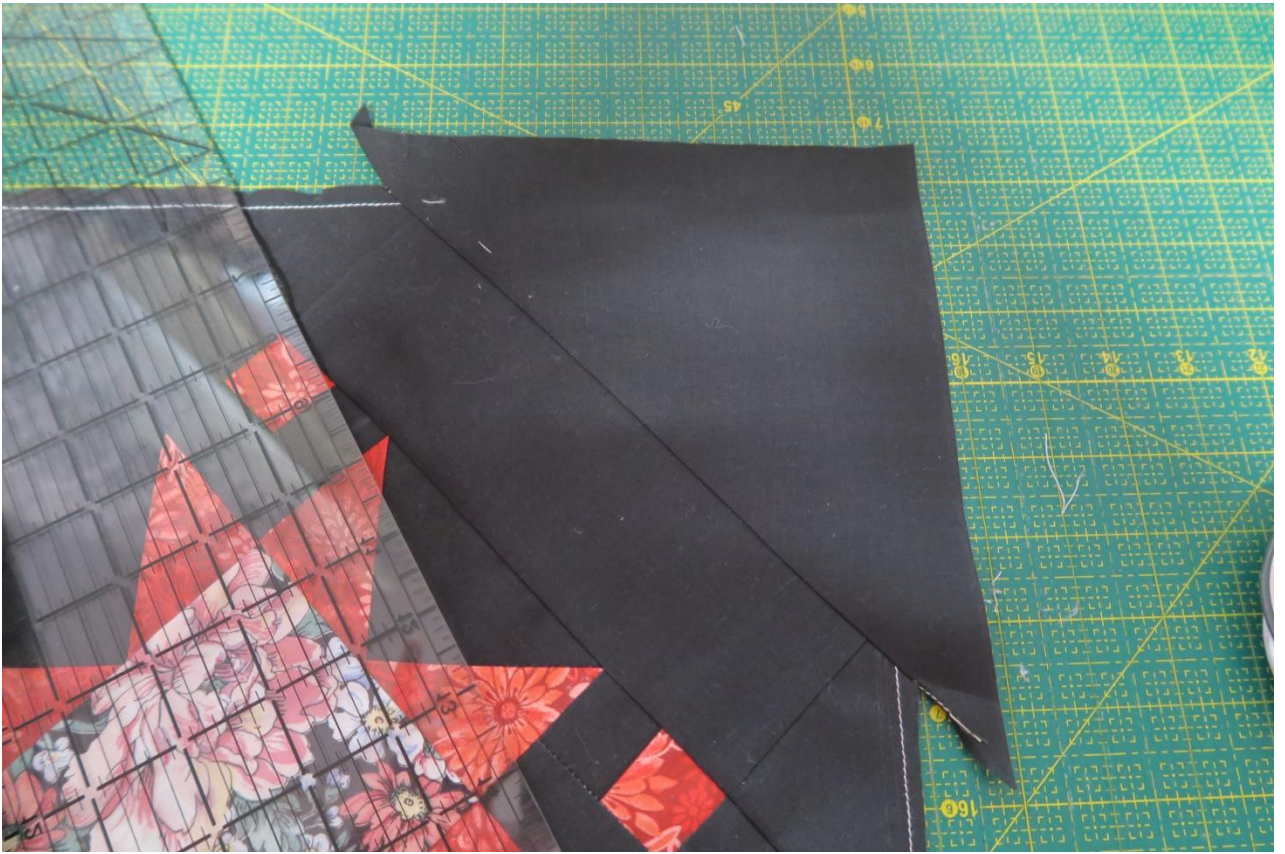
8. Take the top to a nice flat place and trim as close to $\frac{1}{4}$ " from the main marked sewing line as you can.



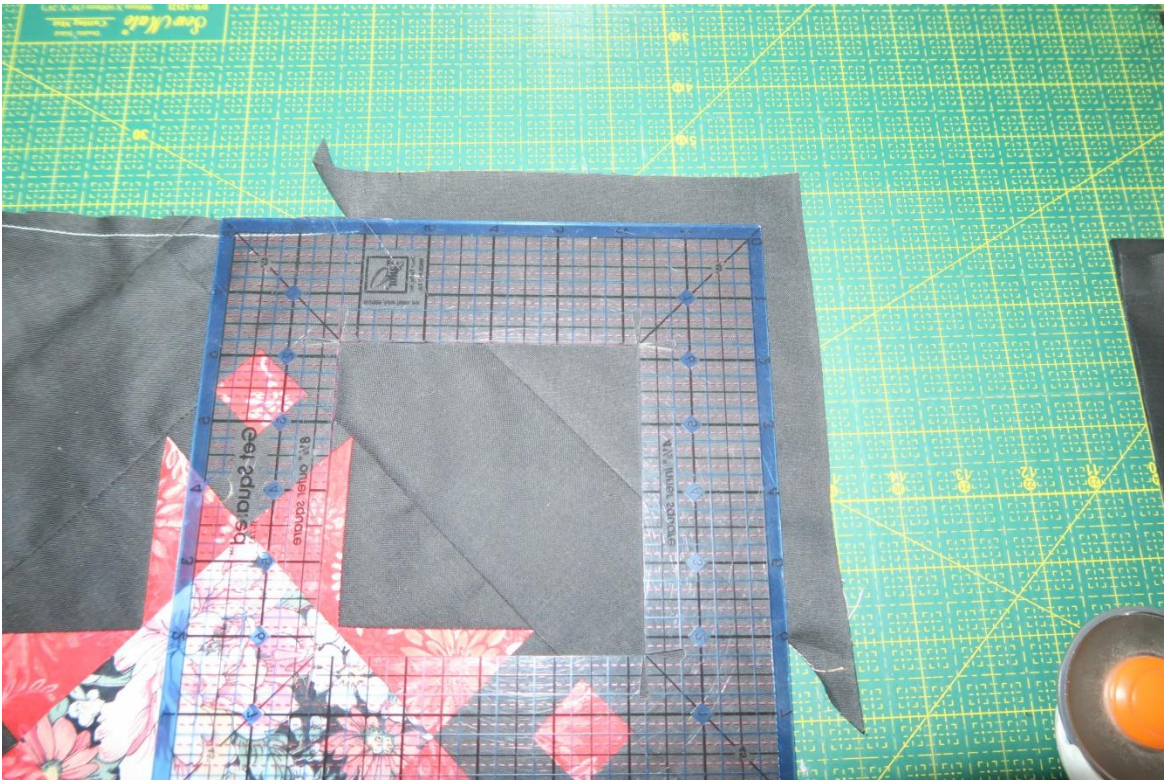
Here's the whole quilt top center (without the corner triangles)



9. Add corner triangles



10. Trim off the excess:



And



Now the whole quilt top with the corner triangles:



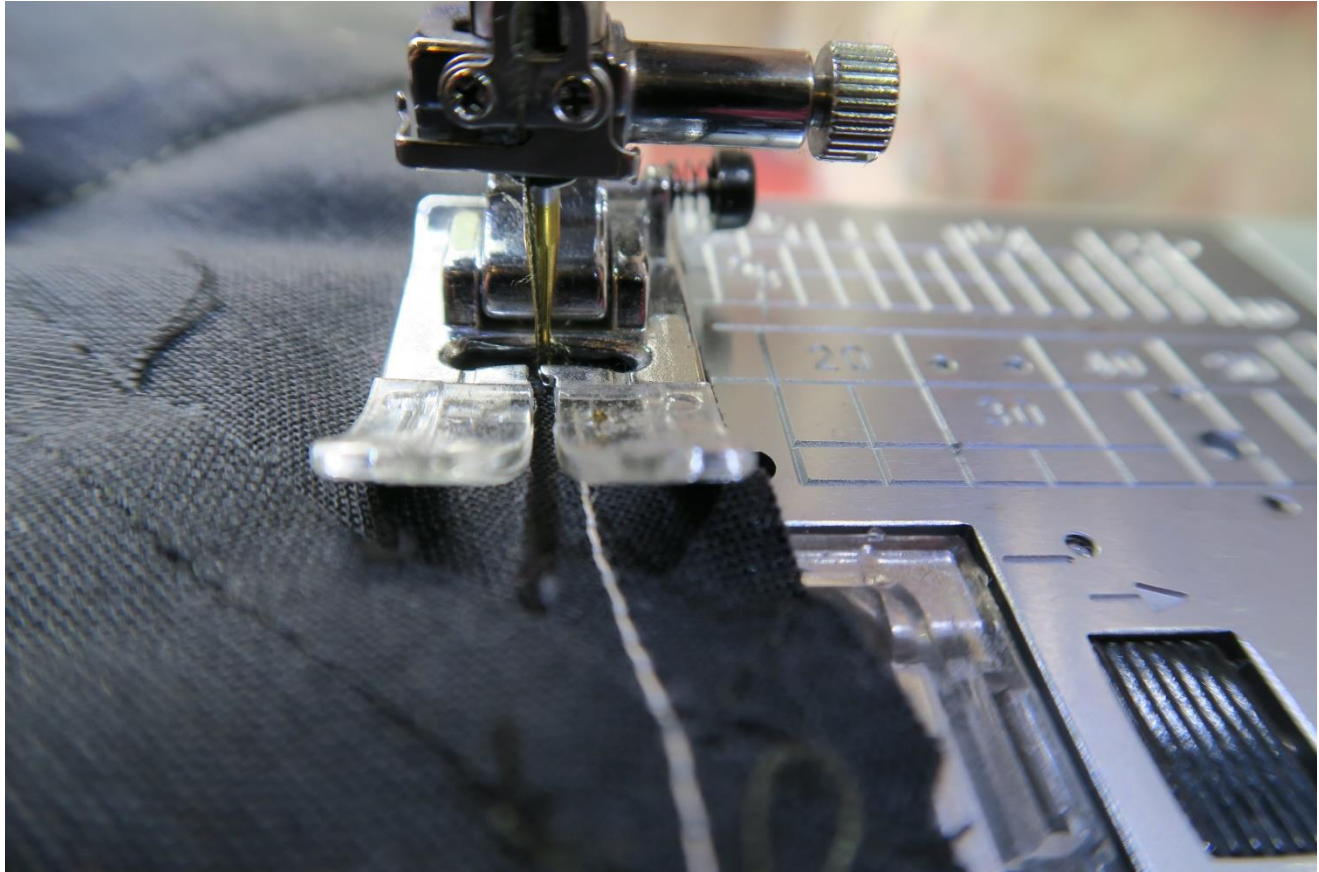
11. Put on the orange border: Cut 1½" x WOF and sew together until you have a long piece. Lay on top of quilt across the middle and cut off to fit (make 2 identical). Sew to top and bottom.



12. Do the same for the other two edges – lay the orange 1½" x WOF strips sewn together across the middle. Cut to fit. Sew to edges.



Note: After sewing, you should not see your stay stitching from the top side. It should be in the seam allowance. Here's a close up showing that the staystitching is in the seam allowance.



Closeup: From the top side: (The ideal! yippee!)



13. Black border: Lay the 5" x WOF sewn together until long strips, across the middle and trim to fit. Sew on.



My cat was with me every step of the way on this day, literally. Every. Step. Of. The. Way!!

14. Do the same for the last black border (the other two sides).



Now your top looks like this!



