

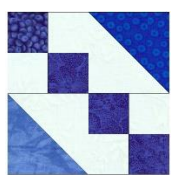
Royal Jewels

94"x 106"

To make the quilt pictured:



This quilt is made up of one 6.5" block (before sewing into the top) and one that goes in the border look like this:



and



(for border)

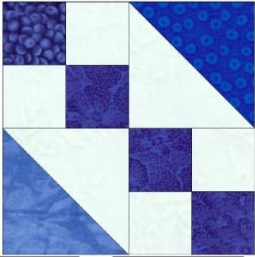
You need:

- 6 3/8 yards of blues – medium or dark

- 5 $\frac{3}{4}$ yards of off white/cream
- 5/8 yard of burgundy

Cut:

Main block: (168 blocks)



Strip piece 2" strips using a white/off white and a blue and cut off segments.



Sample segment:



You need 672 of these. Use a variety of blues.

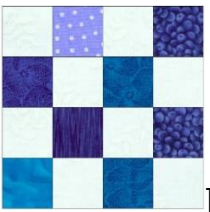
From blues:

- 168 – 4" squares

From off white

- 168 – 4" squares

Border checkerboard block: (60 blocks)



Using your various strips, strip piece using the above method but use 2 off white and 2 blue strips. Cut off 2" segments. Press towards the blue. Cut off 2" segments.

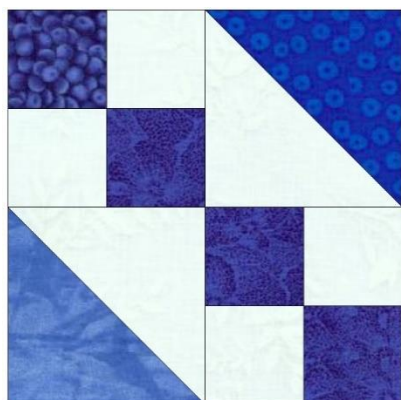


You need 240 of these:



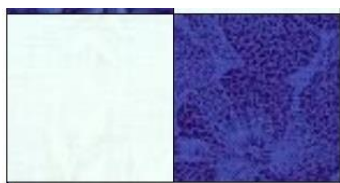
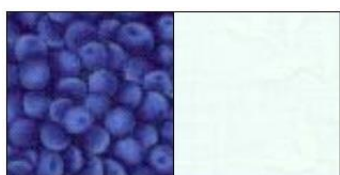
How to make these blocks:

Main block:

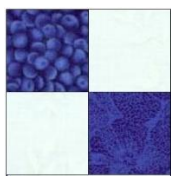


This block is made of 4 patches and hst triangle segments.

Using your previously made strip pieced segments, make your 4 patch by sewing two of them together like this:



=

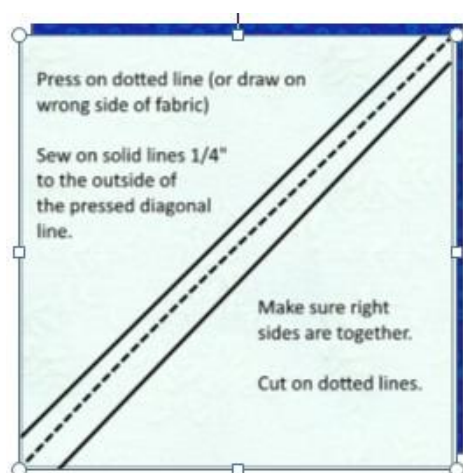


Make 336 4 patches. They are 3.5" square.

Make HST –



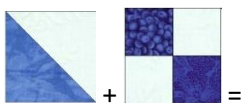
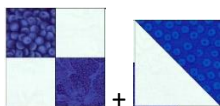
Using your 4" squares of off white and blue, draw a line diagonally across the middle of one of them or press a line diagonally across if you don't want to draw a line. Sew $\frac{1}{4}$ " on each side of that line and cut apart on the drawn or pressed line. To form two half square triangles.



Trim to 3.5" square

Do this 168 times to get 336 half square triangles that are 3.5" big each.

Now, put your block together.

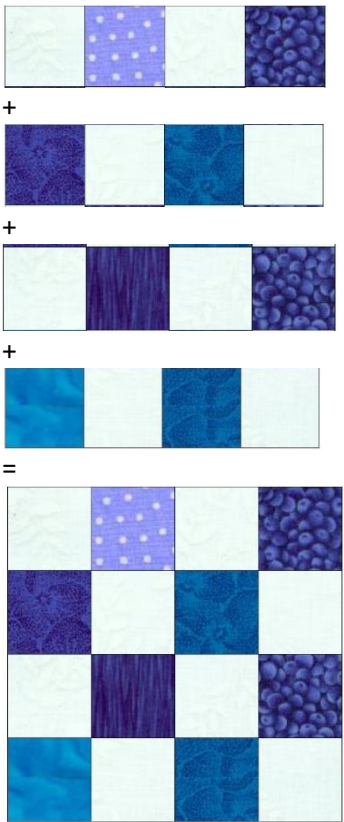


They are now 6.5" square. Make 168.

These are all the blocks you need for the middle of the quilt.

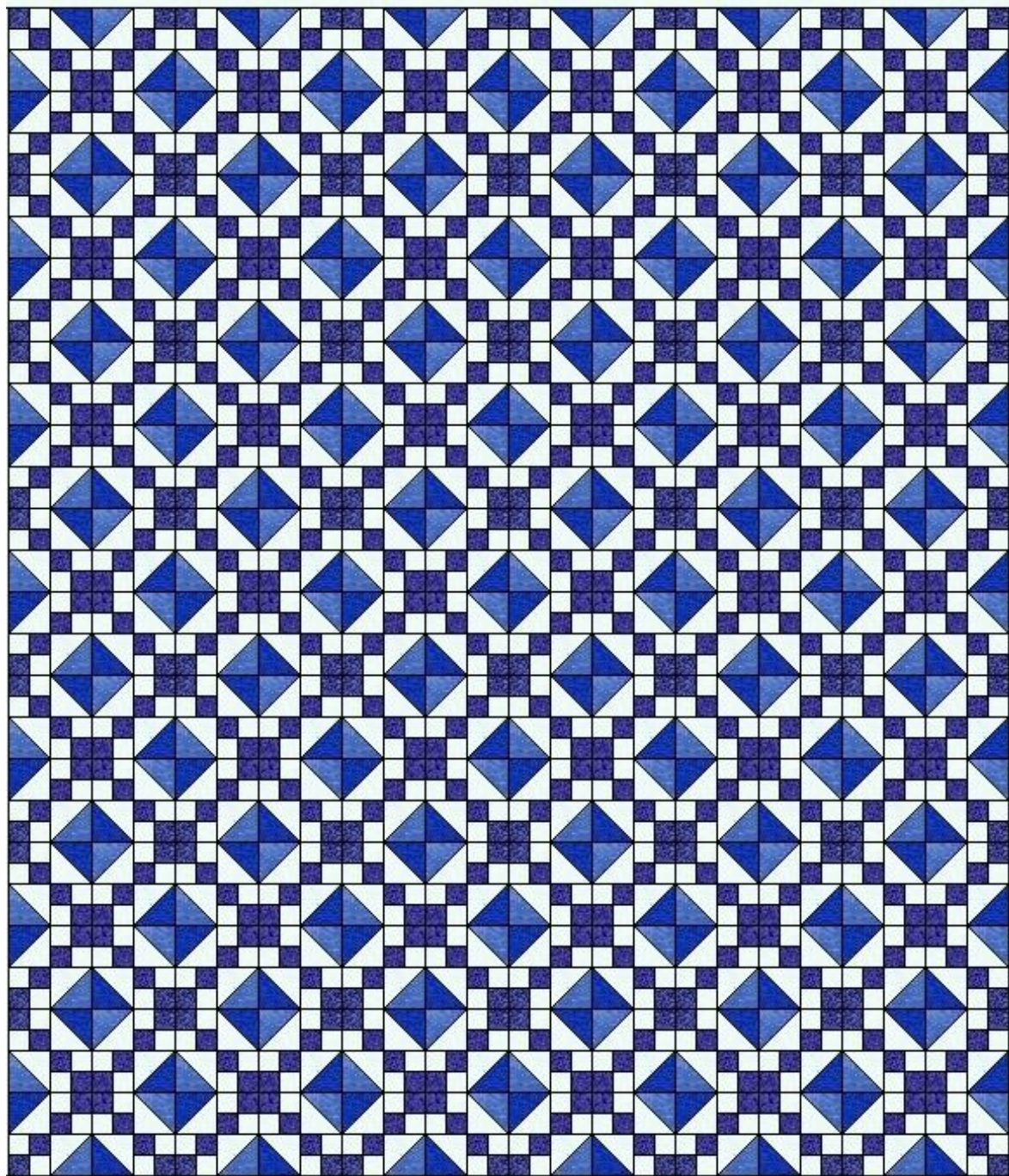
Checkerboard blocks for the border:

Make 60 of these using your segments you made above:



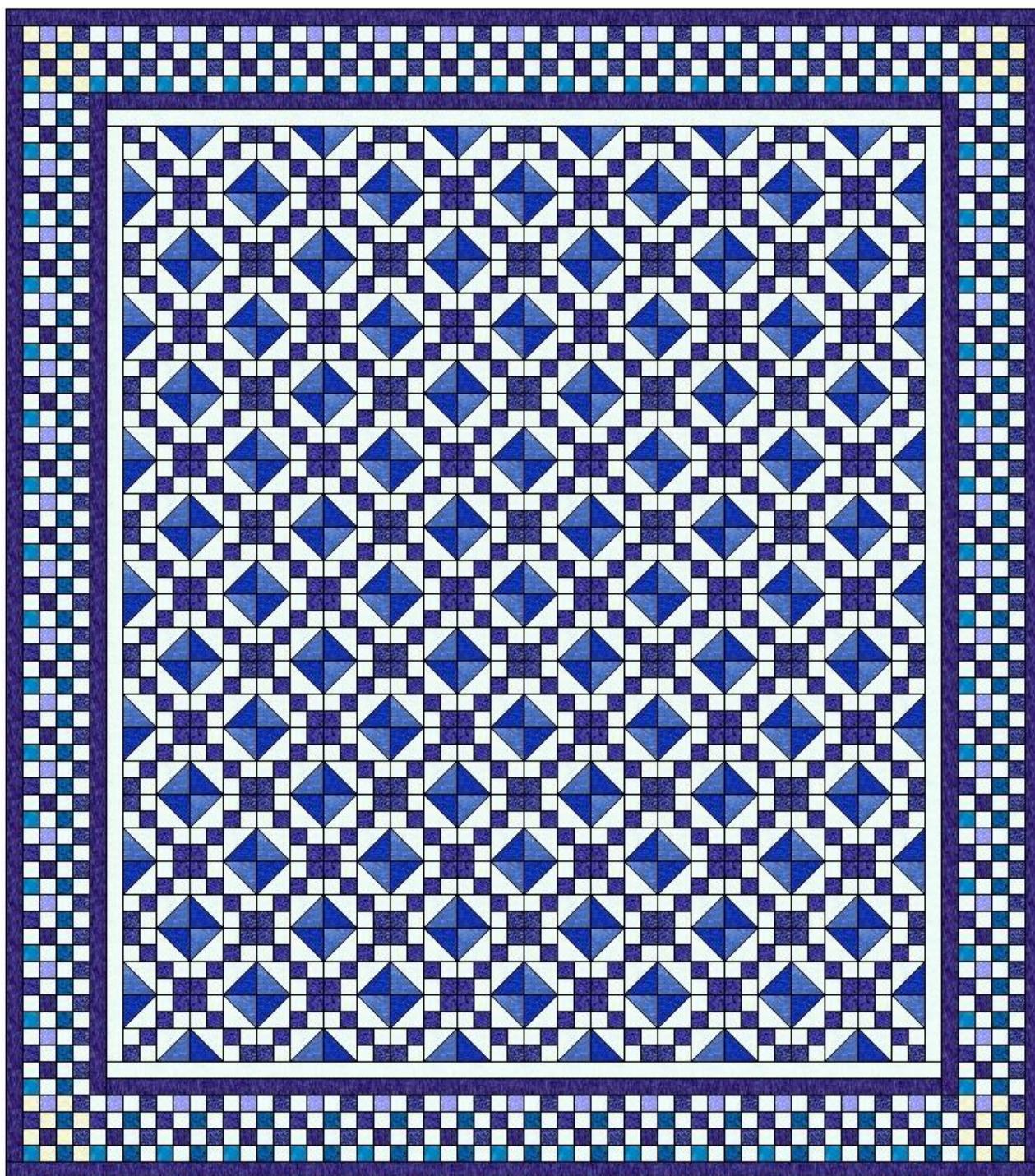
How to make this quilt:

1. Using this diagram, place your blocks into rows. First sew the blocks into rows and then sew the rows together.



2. Add borders: (cut and sew together to make borders the length indicated.)

The layout looks like this with all the borders:



First border: off white –

- Cut 2 – 2"x84.5". Attach to sides.
- Cut 2 – 2" x 75.5". Attach to top and bottom.

Second border: navy blue –

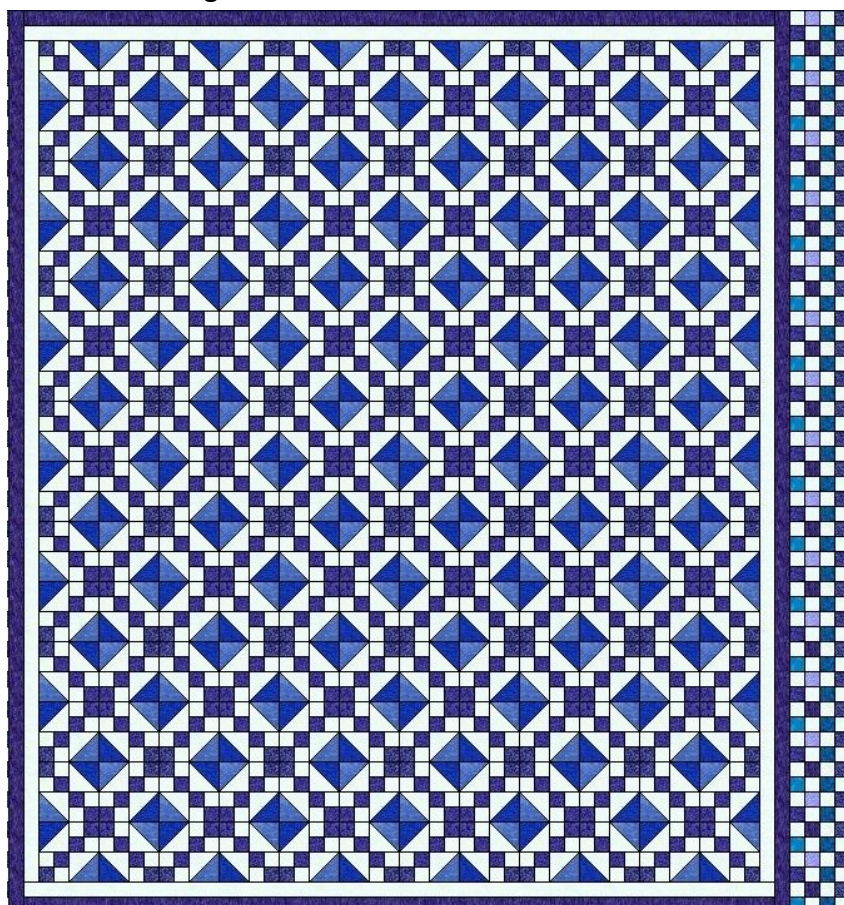
- Cut 2 – 2"x87.5". Attach to sides.
- Cut 2 – 2" x 78.5". Attach to top and bottom.

Third border: checkerboard border –

For the first border – sew 15 checkerboard blocks together to look like this:



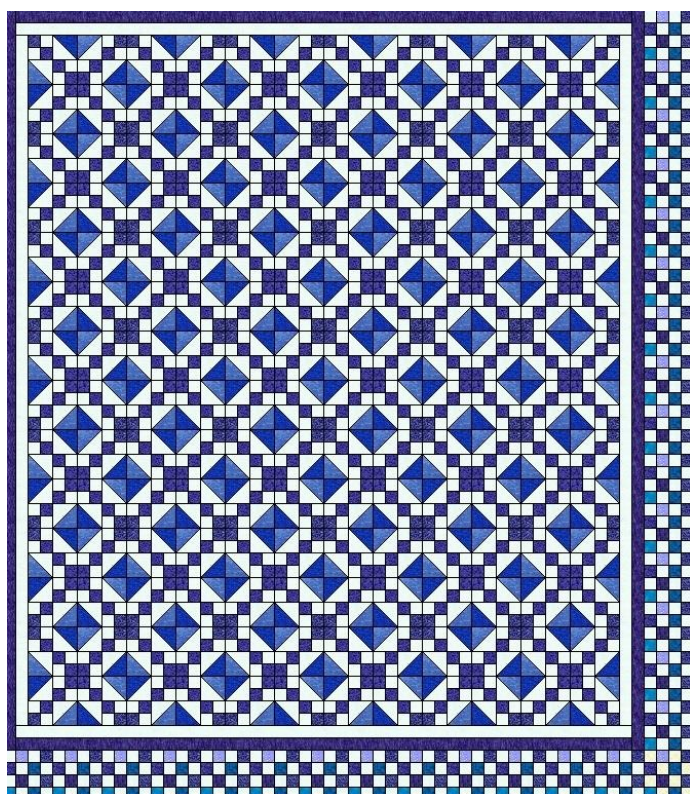
Attach to the right side:



Now sew 14 checkerboard blocks and attach like this:



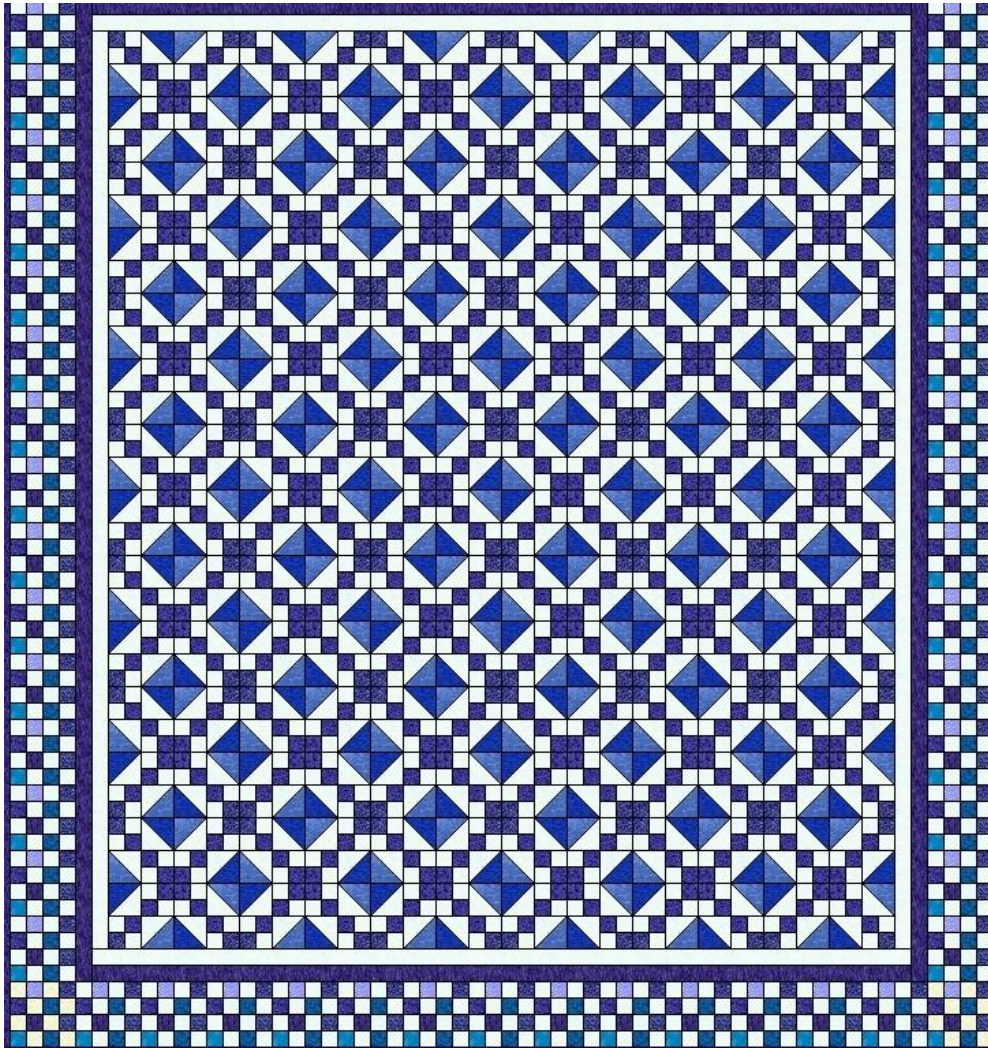
Attach to the bottom. It now looks like this:



For the left side, sew together 16 checkerboard blocks like this:



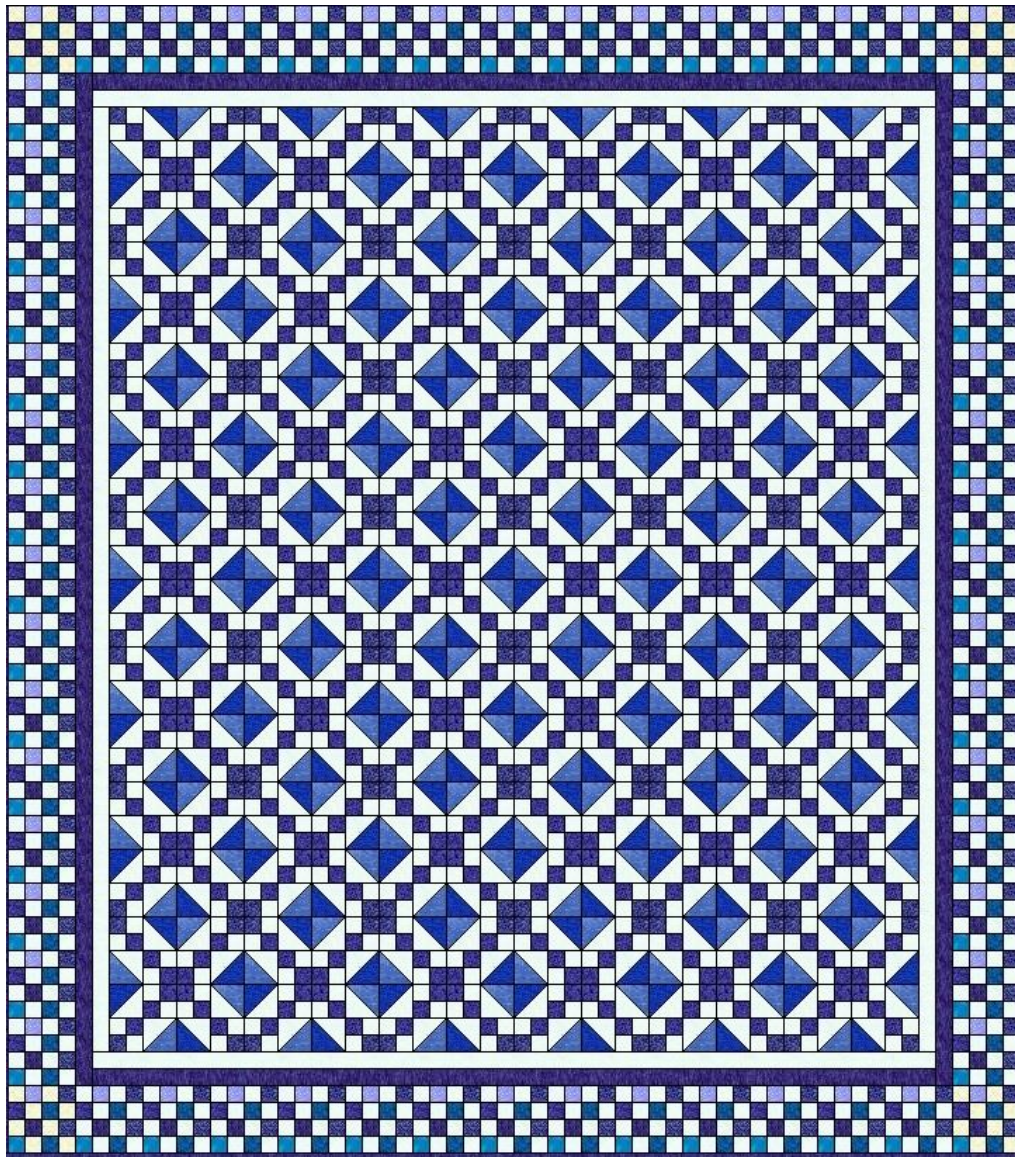
It now looks like this:



For the top, sew 15 checkerboard blocks together and attach to the top.



Attach to the top. Now the checkerboard block is final.



Fourth border: navy –

- Cut 2 – 2.5" x 102.5". Attach to the sides.
- Cut 2 – 2.5" x 94.5". Attach to the top and bottom.

3. **Press** well.
4. **Sandwich**, using whatever type of batting and backing you prefer.
5. **Quilt** as desired. I did swirls.
6. **Bind**, using whatever method you wish.

Congratulations!
Your quilt is finished!

