

# Installation Manual



## USB e-Board



## Manual contents:

Introduction .....	2
PC configuration requirements.....	2
Contents of the gift box .....	2
Setting up the USB connection .....	3
Installing the driver for the DGT e-Board (RabbitPlugin) .....	3
Maintenance of your USB e-Board.....	8
Warranty conditions .....	8

## Introduction

Congratulations on your purchase. You are the owner of a unique DGT electronic chessboard that can be connected to a computer with Bluetooth functionality or via a USB connection. The e-Board is supplied with real wooden chess pieces. With this e-Board you can play against the strongest chess programs, play against human players and also play via the internet. The board can also be used to simply register a chess game for later retrieval and publication or to show a game or analysis on a larger screen to an audience. Of course the board can also be used for training purposes in a classroom setting.

When playing via a computer your opponents moves will be shown on the computer screen but they will also be shown on the display of the DGT3000 or DGT XL chess clock. The software required for controlling the e-Board is included in this package. Occasional software updates may be found on the DGT website.

## PC configuration requirements

Pentium 4 processor, 512 MB Ram  
Windows® Vista or higher  
A free USB port

® "Windows" is a registered trademark of the Microsoft cooperation.

## Contents of the gift box

The gift box should contain following items.

- 1 DGT USB e-Board. (Wood specifications should be marked on the outside of the gift box)
- 1 Set of DGT electronic chess pieces with 17 pieces of each colour (Two queens per colour)
- 1 Drawstring bag
- 1 USB cable of 3 meters length
- 1 Clock cable to connect the e-Board to a DGT3000 (or DGT XL) clock
- 1 CD with the software for the board, additional DGT information and manuals.
- 1 CD with a version of the Fritz chess program developed by ChessBase
- 1 USB installation manual (this manual)

In case items are missing or damaged, please contact your supplier.

## Setting up the USB connection

**Important:** The detection of the electronic chess pieces is done by electromagnetic resonance. This means that proper functioning of the e-Board may be influenced by external electromagnetic fields. Such fields can be caused by large (plasma) monitors, loudspeakers or other devices with build-in magnets or coils. Also strong radio signal transmitters within the e-Board area may cause incorrect piece detection or ghost pieces and as such impact the result of your chess game.

Metal surfaces near your e-Board or underneath it may reduce the sensitivity of the board. Please do not place the e-Board on a metal table or on a table with metal construction beneath or beside it.

Place the e-Board on a stable surface and connect the included USB cable between the e-Board and a USB port of your computer. Windows will automatically detect this new USB device and install the required windows software. The next step is to install the software from the included installation CD: RabbitPlugin and the FTDI driver which is also integrated within the RabbitPlugin installation process.

## Installing the driver for the DGT e-Board (RabbitPlugin)

Place the DGT installation CD in your Windows computer and open the folder to view the files. Run the file "start.bat" in the root folder of the installation CD. The main screen will show an overview of various DGT related information TABs

Note: You can install the RabbitPlugin drivers via the CD menu and the TAB **driver** or you can navigate manually the RabbitPlugin software from the software folder on the CD. We advise to select from the CD the TAB **driver** and then select the RabbitPlugin version you want to install.

**Important:** Within the driver TAB there are 2 Rabbit installation programs: One for 32 bit programs and one for 64 bit programs. Older chess programs are 32 bit, so even if you have a 64 bit Windows operating system you definitively need to install the 32 bit version if you want to use 32 bit chess programs.

### DGT recommends following:

On a 64 bit Windows operating system: Install both versions. (Normally for all current PCs)

On a 32 bit Windows operating system: Only install the 32 bit version.(Only for old PCs)

After selecting the Rabbitplugin, the installation process starts automatically or, depending on installed security software, you may need to allow to run this program when a warning pop-up appears with such question.

The RabbitPlugin setup programs have following name format:

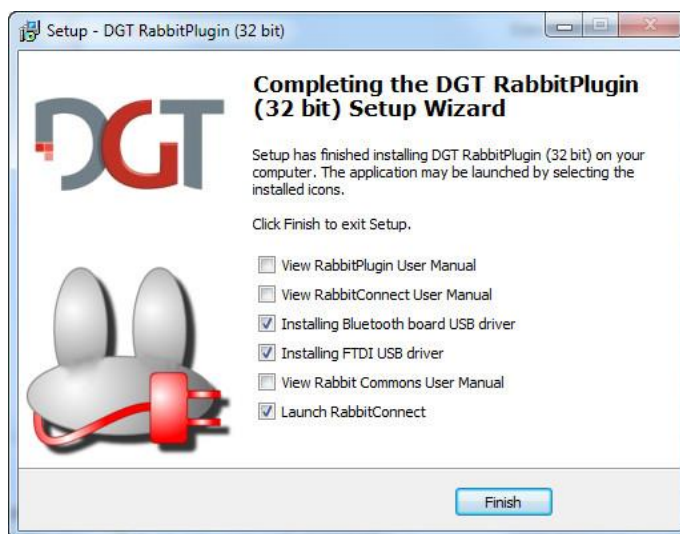
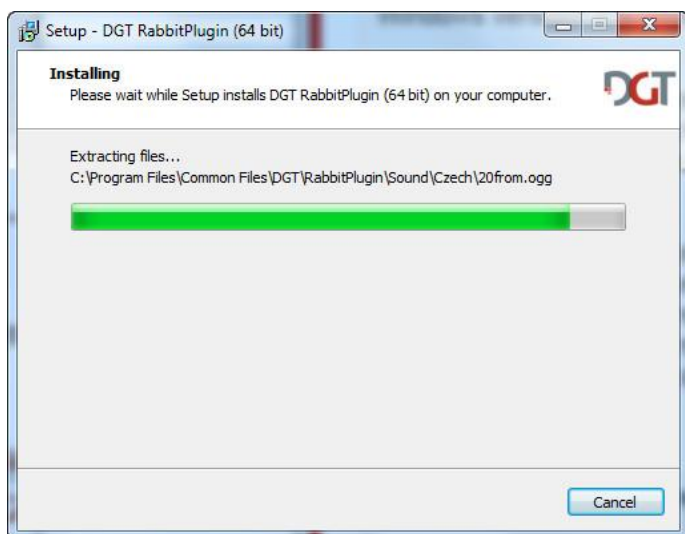
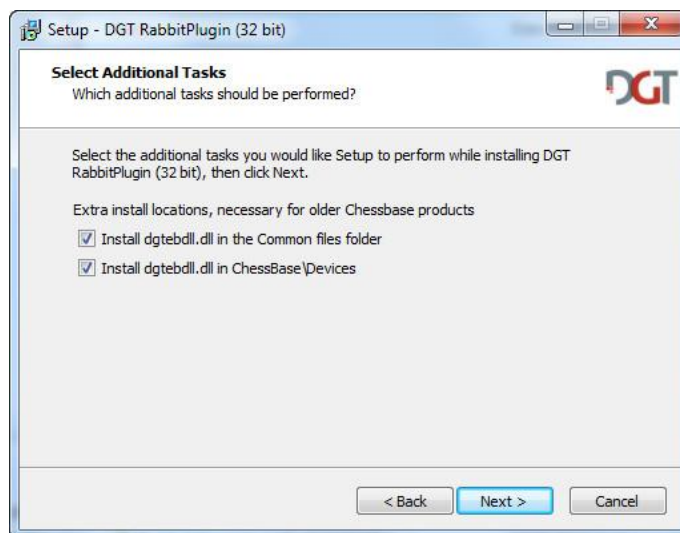
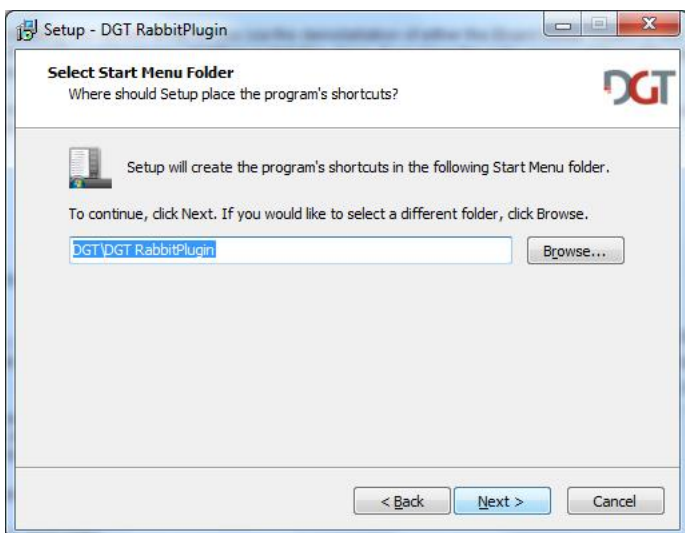
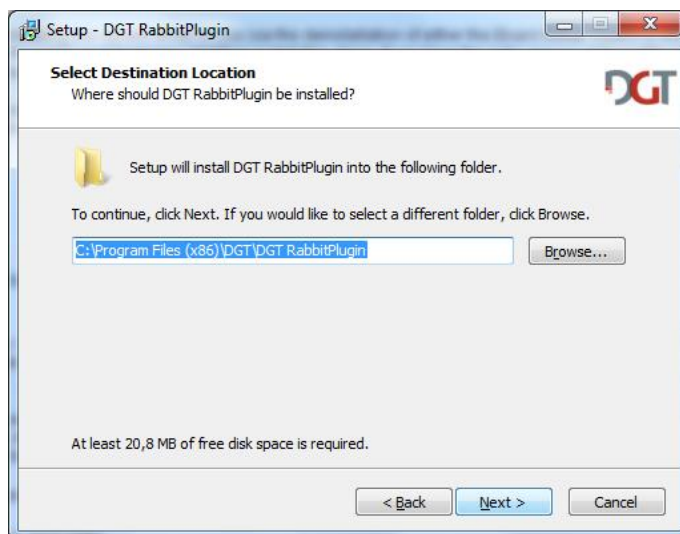
RabbitPlugin\_2.0.27\_Release\_mei3\_Win32.exe (Details may change due to the release of new software versions)

RabbitPlugin\_2.0.27\_Release\_mei3\_Win64.exe (Details may change due to the release of new software versions)

After starting this wizard, there may pop-up a warning message from User Account control again. Please confirm and press **OK**. Then following text box will appear. Although the program is in English feel free to choose alternative languages in the language pull-down selection.

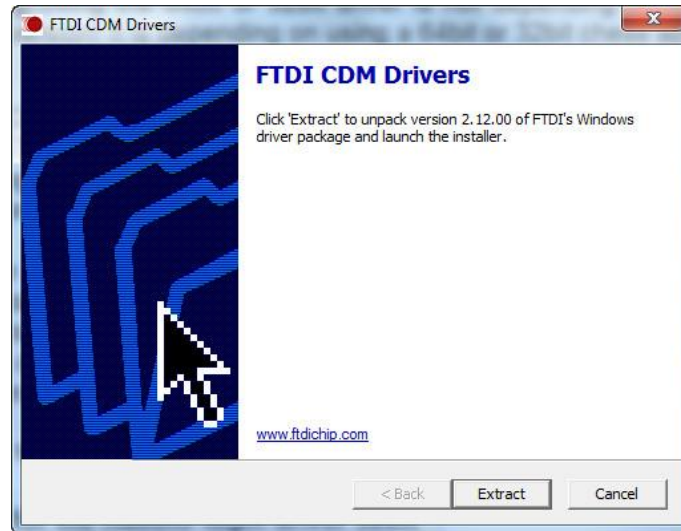


The RabbitPlugin driver wizard will now continue as per following picture flow. For normal customer usage it is recommended to accept all default settings. Do note that the software versions as mentioned in the pictures may be different and newer in your case. Also be aware that there are minor screen variations between the 32 bit and the 64 bit installation screens.



The Bluetooth board driver is NOT required for your USB board and should be deselected before selecting **Finish**. If you have selected the box **Launch RabbitConnect** in the previous screen then this program will start running.

We always advise to install the included latest FTDI driver as well. Installation will take place after you press the RabbitPlugin Finish button. Please proceed and finish the installation process as guided by the FTDI driver installer:



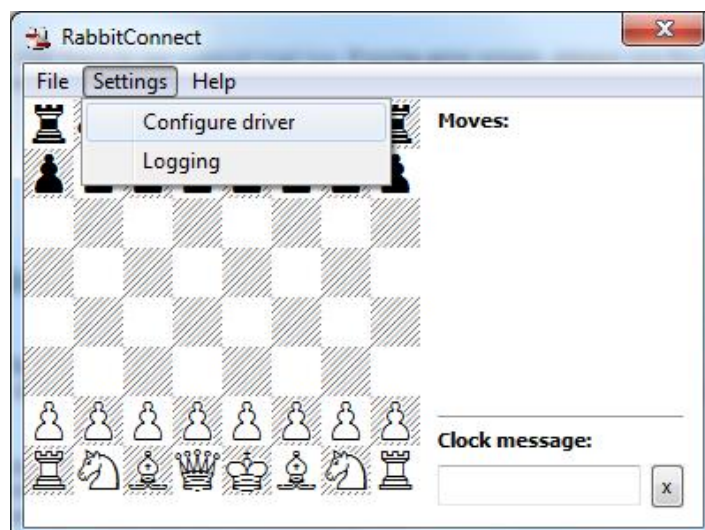
**Important:** It may be required to move the, already started, RabbitConnect window as the FTDI driver installer might be hidden behind it.

On the FTDI screen select **E**xtract and **O**K to complete the installation.

The RabbitConnect program, which is already started, connects the e-Board to the PC and is used for checking and troubleshooting purposes or can be used when setting changes within the RabbitPlugin driver are required. Changes made in this program will be saved after program closing and will apply for all programs that use the connected e-Board and the installed RabbitPlugin driver.

After launching RabbitConnect, the main window will show the DGT e-Board. It is likely that there are no chess figures shown on the board picture. To test the e-Board it is a good moment to place all chess pieces on the DGT e-Board. If you do not see a chessboard displayed then the wrong comport is selected.

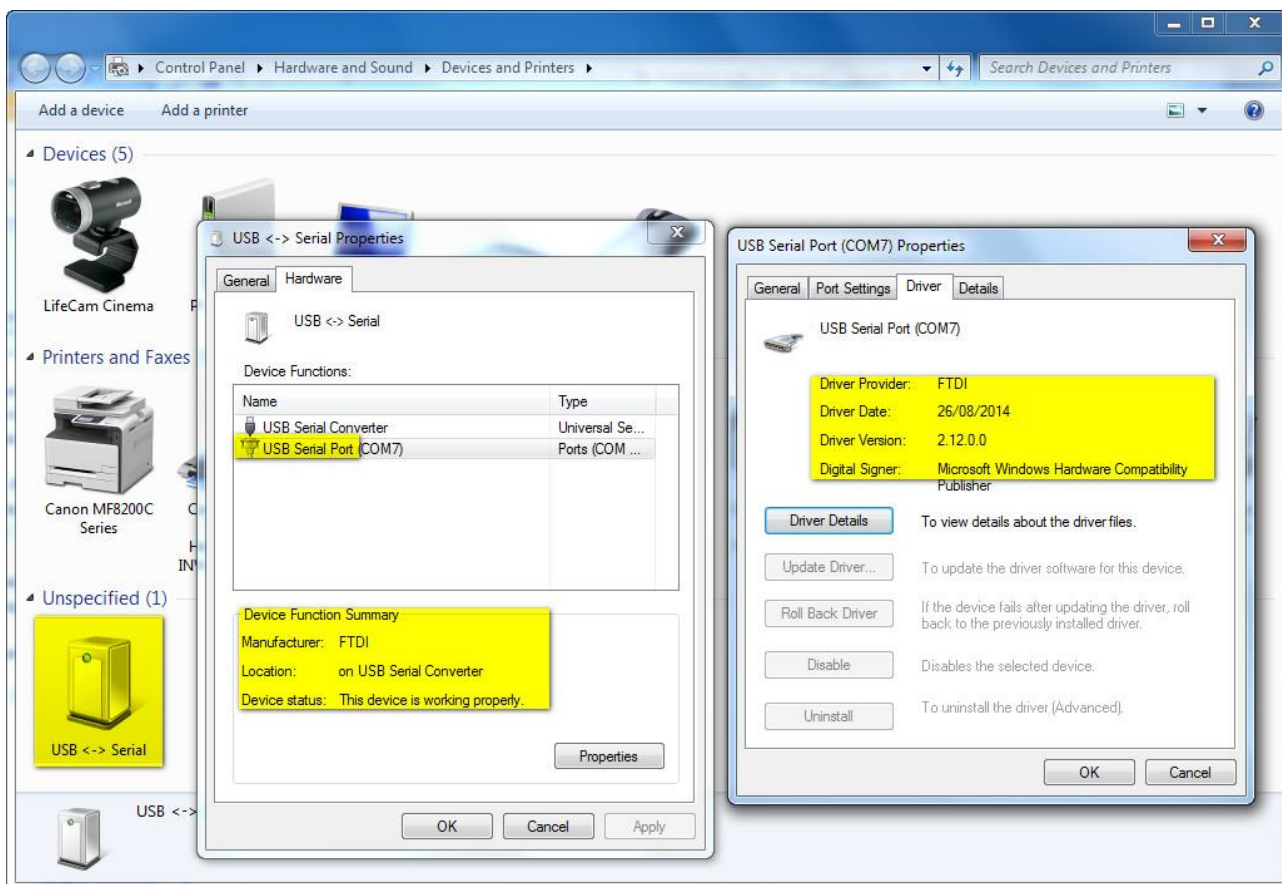
- Click on the **S**ettings+menu
- Choose **C**onfigure driver+
- Choose the **C**onnection+Tab first.
- Select within the pull down menu the COM port that is used for your e-Board.



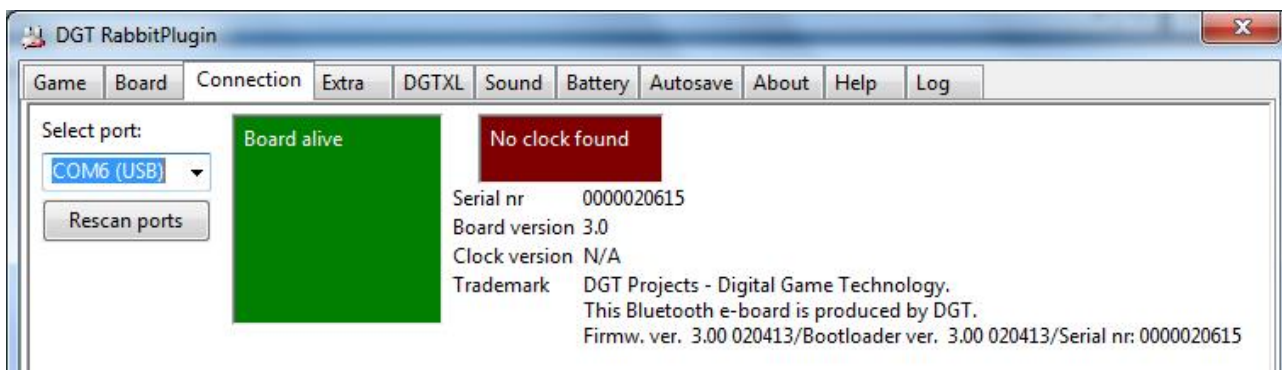
After a few seconds (up to 10) the big square box should turn green and show **B**oard alive+. Depending if you have a DGT3000 or DGT XL clock connected and switched on, the second box will also turn green and a clock version will be visible.



**Important:** In some cases the correct port number was not selected correctly in the RabbitPlugin Select port table and the Board alive checkbox does not turn green. In that case check the used USB port number in your Windows control panel (see below picture where the comport is COM 7), change the port number in RabbitConnect and restart the RabbitConnect program again.



If the Board alive checkbox is green, the serial number of your board will be shown in this screen. Also important information like clock version, e-Board firmware version and boot loader version are displayed. If you require further assistance with your e-Board, please include this technical information in the mail for the DGT support department.

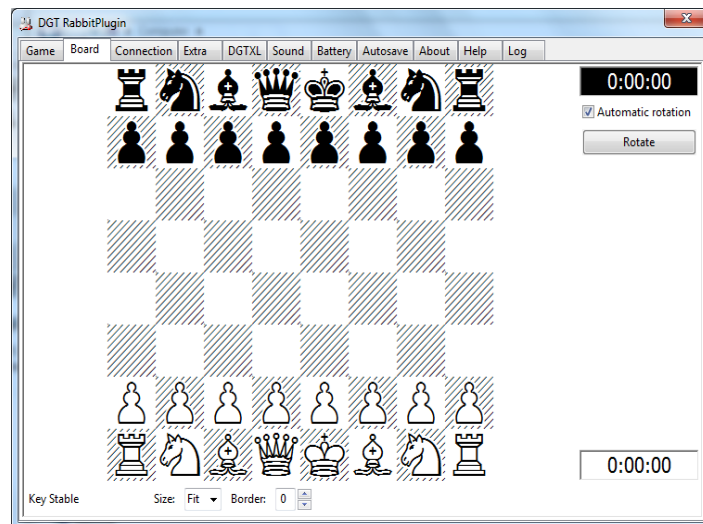




Please note that this RabbitPlugin window may be smaller on your computer and will not show all tabs. The size of this window can be easily adjusted by pulling or shrinking the right lower corner of this program window.

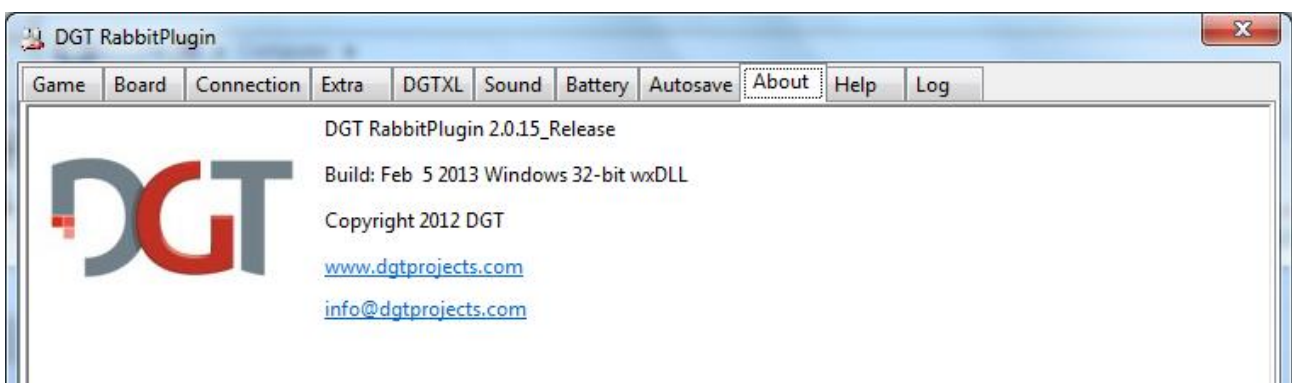
**Important:** Pressing on the cross (upper right corner) will close RabbitConnect.

The **Board** TAB will show the pieces on the board similar as in the main window of RabbitConnect. When this window is shown in a chess program, the squares may be coloured. For example when a field is green, it means that there is no or a wrong piece on that location. The meaning of these coloured squares is further explained in the manual of the RabbitPlugin which can be found under the help TAB or on the installation CD.



The battery TAB is not used for the USB e-Board.

By the about TAB you can find the RabbitPlugin software version currently installed on your PC.



The software on the CD will be updated on a regular basis. Before installing the software from this CD we recommend to check if there is a more recent version on [www.digitalgametechnology.com](http://www.digitalgametechnology.com) . You can find it in the menu: SUPPORT followed by: DGT SOFTWARE.

More detailed information and additional manuals are available on the DGT e-board installation CD (included in this package).

In case questions arise, please consult the FAQ page on <http://www.digitalgametechnology.com> . If you are unable to find the solution by consulting the FAQ section, feel free to contact the support department of DGT. Contact details can be found on our website.

## **Maintenance of your USB e-Board**

The firmware of this e-Board is stored in a non-rewritable memory. It is not required to update the firmware of this USB e-Board.

The wooden surface of this USB e-Board is finished with a polyurethane varnish. You can clean it with a damp cloth, preferable a microfiber cloth. Do not use any abrasive cleaning products and avoid products that contain silicone oil. Usage of such products may impact the live-time of your e-Board or damage the polished surface.

The wooden chess pieces with integrated electronics should be handled with care and stored in the drawstring bag (included).

## **Warranty conditions**

DGT guarantees that your DGT e-Board and chess pieces comply to the highest quality standards. If the product, despite our care in choosing components, material, production and transport, nevertheless shows a defect during the first 24 months after purchase, you should contact the dealer where you purchased the appliance. Feel free to contact the DGT support department for technical questions.

In order to qualify for warranty of your DGT e-board, you should present a copy of the proof of purchase which includes the date of purchase, dealer name and purchase price.

The warranty is only valid if the DGT e-Board has been used in a prudential manner. Our warranty obligations do not apply if attempts to repair the DGT e-Board have been carried out without our explicit written permission.

Colouring due to severe sunlight may affect the colour of these pieces or your e-Board and is not covered under warranty.

For further questions and support information please visit: [www.digitalgametechnology.com](http://www.digitalgametechnology.com) .