

Marking Time in America: The Prison Works (2009–2013)

Aug 4, 2016 - Oct 1, 2016 · 317 10th Avenue, New York, US



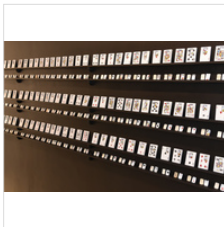
JESSE KRIMES

Apokaluptein:16389067, 2016

Hand-transferred digital print, graphite, gouache, federal prison bed sheets

120 × 312 in
304.8 × 792.5 cm

\$40,000 - 50,000



JESSE KRIMES

Purgatory, 2009

Image transfers, prison-issued soap, toothpaste, playing cards.

\$40,000 - 50,000



JESSE KRIMES

Terror Card I, 2009

Image transfer, prison-issued soap, prison-issued bedsheets.

8 × 8 in
20.3 × 20.3 cm



JESSE KRIMES

Terror Card II, 2009

Image transfer, prison-issued soap, prison-issued bedsheets.

8 × 8 in
20.3 × 20.3 cm



JESSE KRIMES

Terror Card III, 2009

Image transfer, prison-issued soap, prison-issued bedsheets.

8 × 8 in
20.3 × 20.3 cm



JESSE KRIMES

Page, 2010

Graphite, image transfers, prison-issued bedsheets.

14 × 26 in

35.6 × 66 cm



JESSE KRIMES

Elizabeth, 2009

Prison bed sheet, transferred newsprint, graphite

10 × 10 in

25.4 × 25.4 cm



JESSE KRIMES

Patti, 2009

Graphite, image transfers, prison-issued bedsheets.

14 × 24 in

35.6 × 61 cm



JESSE KRIMES

Polanski, 2009

Graphite, image transfers, prison-issued bedsheets.

16 × 24 in

40.6 × 61 cm



JESSE KRIMES

RoederII, 2009

Graphite, image transfers, prison-issued bedsheets.

9 × 6 in

22.9 × 15.2 cm



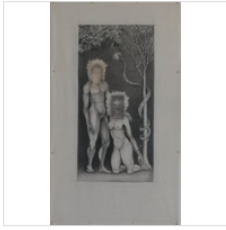
JESSE KRIMES

Barack, 2009

Graphite, image transfers, prison-issued bedsheets.

13 × 20 in

33 × 50.8 cm



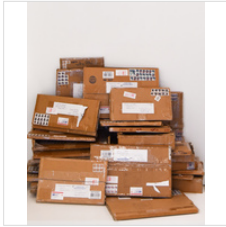
JESSE KRIMES

Mel, 2009

Graphite, image transfer, prison-issued bedsheet.

17 1/2 × 10 in

44.5 × 25.4 cm



JESSE KRIMES

Packing for Apokalupstein:16389067, 2010-2013, 2010-2013

Mixed media



JESSE KRIMES

Apocrypha:16389067, 2016

Digital printing on prison-issued bedsheets

47 × 33 in

119.4 × 83.8 cm