

Outreach

West Multnomah Soil & Water Conservation District partnered with Clean Water Services, Tualatin Hills Parks & Recreation Department and Tualatin Soil & Water Conservation District to organize a very well-attended weed watcher workshop in Multnomah Village. Numerous tabling events, including local plant sales, helped spread invasive species information to nearly 500 people.

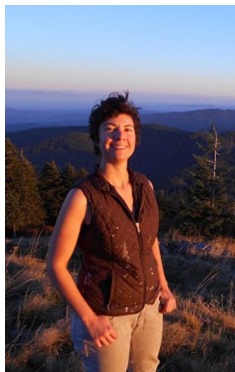
Restoration

Conservation District staff are working with over 30 property owners to implement follow-up restoration practices on lands impacted by one or more of the above listed high priority invasive plant species. Several additional properties are also undergoing restoration work through projects with Backyard Habitat Certification Program or Tryon Creek Watershed Council.

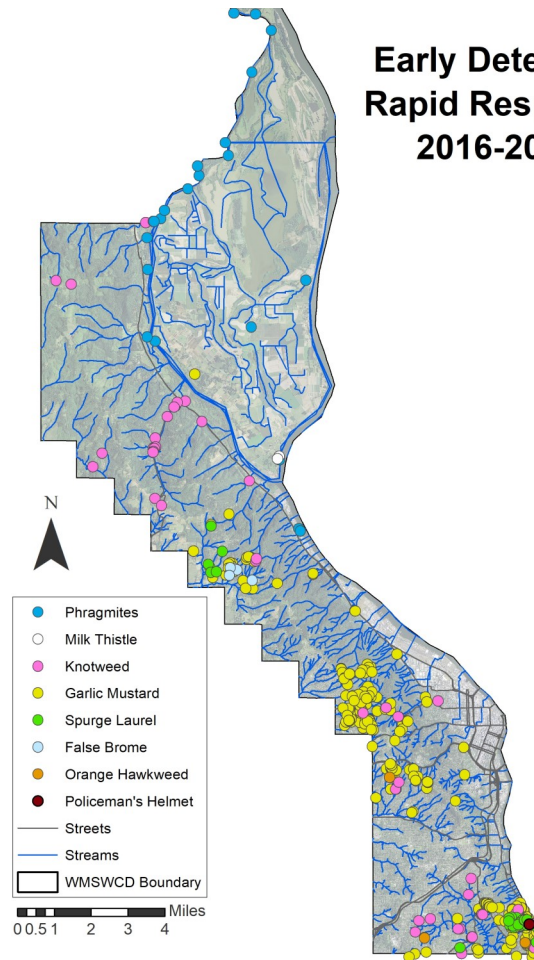
**All species are state-designated "B" noxious weeds, unless otherwise noted. For more information, visit <http://www.oregon.gov/oda/programs/weeds/>.*

Expanding Program Capacity

The Conservation District added additional resources to the invasive species program in March 2017 with the hiring of Ari DeMarco as a Permanent Seasonal Conservation Technician. Ari assists in fieldwork coordination, mobile data collection, mapping projects and even database development. From the beginning, Ari has proven to be a very valuable asset to the program. Welcome Ari!



Report written by Michelle Delepine & Ari DeMarco; map by Kristina Risetto. Edited and designed by Carolyn Lindberg. September, 2017



For more information about the Early Detection-Rapid Response program at West Multnomah Soil & Water Conservation District, please contact Michelle Delepine, Invasive Species Program Coordinator, 503.238.4775, ext. 115, michelle@wmswcd.org.

(Cover photo: Invasive orange hawkweed)



2701 NW Vaughn Street, Suite 450
Portland, OR 97210
www.wmswcd.org

Early Detection-Rapid Response

2016-2017
Final
Report



EDRR Overview

From July 2016 to June 2017, Invasive Species Program staff assisted property owners and residents to survey and control priority noxious weeds at 422 sites in west Multnomah County. Past efforts are paying off, as many long-term managed infestations have shown much improvement from when control work began. In fact, this was a banner year for the lack of new plants at previously infested sites.

Giant Hogweed (*Heracleum mantegazzianum*) (Designated A & T)*

We have three known giant hogweed locations in unincorporated west Multnomah County, but none had any new plants this year! This is especially encouraging as seed production has not occurred at any of these sites in at least five years. The District and landowners will continue to monitor these locations to ensure nothing is missed in the future.



Orange Hawkweed (*Hieracium aurantiacum*) (Designated A & T)*

The District manages six orange hawkweed sites in unincorporated SW Portland; however, half of these had no new plants this past year! A total of 1,000 sq. feet was controlled, which is less than half of the area covered in the previous year.



False Brome (*Brachypodium sylvaticum*)

While parts of western Oregon have well-established false brome populations, the District has only six confirmed locations, all in the Abbey Creek watershed. The total acreage has grown to 1,000 sq. feet but most sites only had 1-2 false brome plants. All infestations were controlled.

Garlic Mustard (*Alliaria petiolata*)

Much work has gone into finding and controlling garlic mustard in our region. In our District alone, 382 sites were controlled over the course of the 2017 field season. Over half were managed using manual handpulling techniques. A total of 2,640 pounds of garlic mustard was pulled by staff and contractors, and several hundred additional pounds were pulled by community volunteers. Despite the District managing over 100 additional sites this year, the overall affected area remained at 14 acres and the actual coverage area declined from 3 acres in 2016 to 2.3 acres in 2017. Over 50 previous infestations had no new seedlings this year—by far the greatest success we have seen yet. The garlic mustard program is supported by funding from an Oregon State Weed Board grant.



Knotweed (*Fallopia x bohemica*, *F. japonica*, *F. sachalinensis*)

The Conservation District is focused on several priority watersheds for control and management of knotweed. The overall treated area declined from 1.73 acres in 2015 to 0.95 acres this past year; however, the District still manages over 50 sites. Many infestations have been reduced drastically over the past 5+ years of work and two sites had no new knotweed plants present.



Milk Thistle (*Silybum marianum*)

Small patches of milk thistle have been found on Sauvie Island. One patch the District has managed for three years was reduced to two small seedlings (2 sq. ft. total) over the past year.



Phragmites (*Phragmites australis* ssp. *australis*)

Portland State University's Center for Lakes and Reservoirs assisted Oregon Department of Agriculture and the Conservation District in surveying Multnomah Channel for *Phragmites* during the fall of 2016. Most of these were controlled (a total of 8 sites) across 0.31 acres. At least two previously controlled sites had no new plants.



Policeman's Helmet (shown) (*Impatiens gladiifera*) & Balfour's Touch-me-not (*Impatiens balfourii*)

A dedicated landowner is successfully managing both policeman's helmet and Balfour's touch-me-not at a private property in SW Portland. Two additional sites have been free of these invasive plants since 2015.



Spurge Laurel (*Daphne laureola*)

This toxic, perennial shrub was found and removed at 23 sites across the District for a total of 0.55 acres. Notable areas of concern include Abbey Creek, Columbia Creek, Tryon Creek, Dunthorpe, and Forest Park.



Additional Absences

For the second year in a row, no pokeweed plants were found at three District-managed sites. The *Ludwigia* population discovered by Oregon Department of Agriculture and conservation district staff in the Multnomah Channel also had no new plants for the second consecutive year.