

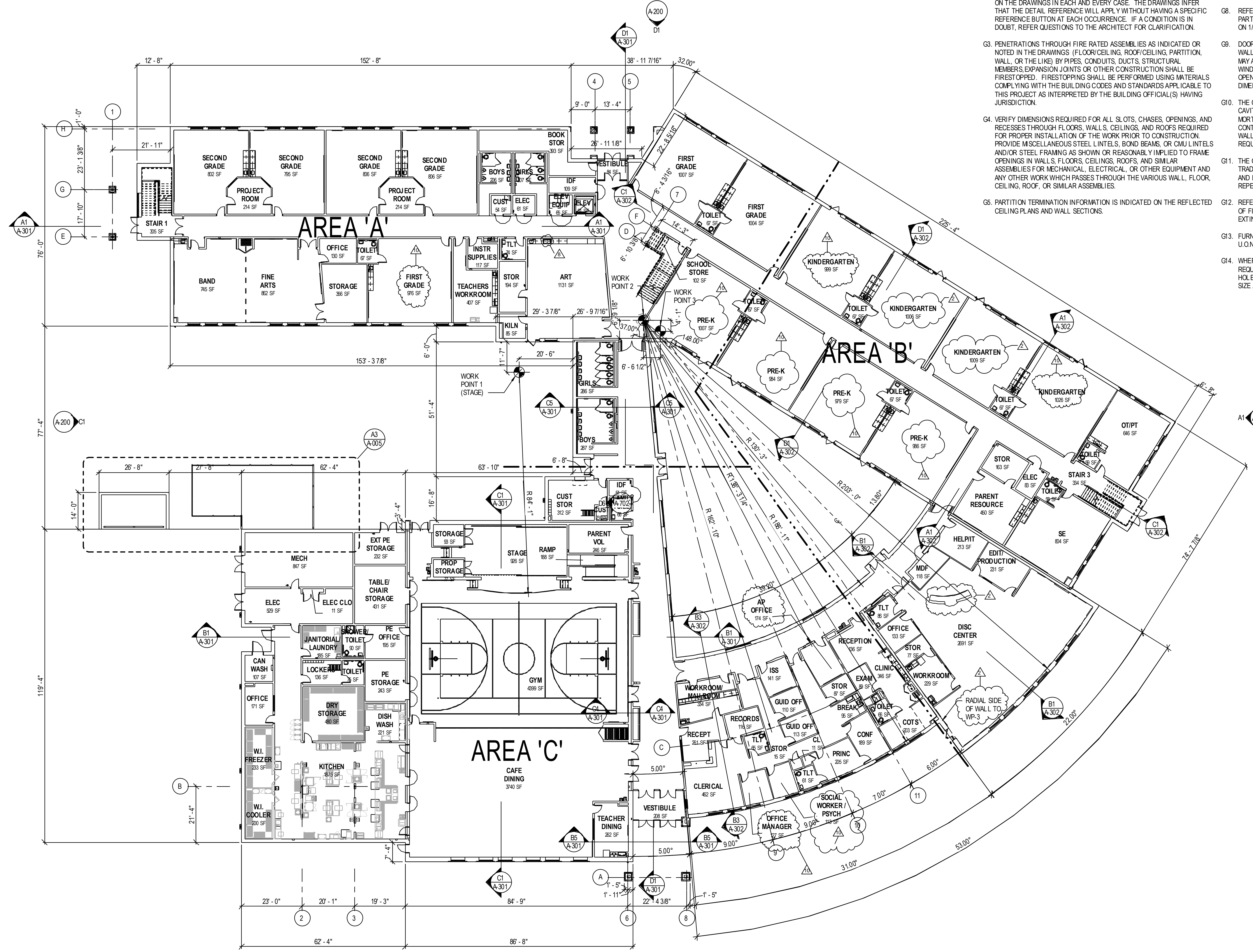
GENERAL NOTES

(APPLIES TO ALL SHEETS)

- G1. UNLESS OTHERWISE NOTED, ALL FLOOR PLAN DIMENSIONS ARE TO FACE OF MASONRY, FACE OF STUD, OR STRUCTURAL COLUMN GRID. REFER TO PARTITION TYPES FOR PARTITION DIMENSIONS, TYPICAL DETAILS AND ADDITIONAL PARTITION NOTES.
- G2. WHERE A PARTICULAR DETAIL OR CONDITION OCCURS IN SEVERAL LOCATIONS, SPECIFIC DETAIL REFERENCE BUTTONS MAY NOT APPEAR ON THE DRAWINGS IN EACH AND EVERY CASE. THE DRAWINGS INFER THAT THE DETAIL REFERENCE WILL APPLY WITHOUT HAVING A SPECIFIC REFERENCE BUTTON AT EACH OCCURRENCE. IF A CONDITION IS IN DOUBT, REFER QUESTIONS TO THE ARCHITECT FOR CLARIFICATION.
- G3. PENETRATIONS THROUGH FIRE RATED ASSEMBLIES AS INDICATED OR NOTED IN THE DRAWINGS (FLOOR/CEILING, ROOF/CEILING, PARTITION, WALL, OR THE LIKE) BY PIPES, CONDUITS, DUCTS, STRUCTURAL MEMBERS, EXPANSION JOINTS OR OTHER CONSTRUCTION SHALL BE FIRESTOPPED. FIRESTOPPING SHALL BE PERFORMED USING MATERIALS COMPLYING WITH THE BUILDING CODES AND STANDARDS APPLICABLE TO THIS PROJECT AS INTERPRETED BY THE BUILDING OFFICIAL(S) HAVING JURISDICTION.
- G4. VERIFY DIMENSIONS REQUIRED FOR ALL SLOTS, CHASES, OPENINGS, AND RECESSES THROUGH FLOORS, WALLS, CEILINGS, AND ROOFS REQUIRED FOR PROPER INSTALLATION OF THE WORK PRIOR TO CONSTRUCTION. PROVIDE MISCELLANEOUS STEEL L INTELS, BOND BEAMS, OR CMU L INTELS AND/OR STEEL FRAMING AS SHOWN OR REASONABLY IMPLIED TO FRAME OPENINGS IN WALLS, FLOORS, CEILINGS, ROOFS, AND SIMILAR ASSEMBLIES FOR MECHANICAL, ELECTRICAL, OR OTHER EQUIPMENT AND ANY OTHER WORK WHICH PASSES THROUGH THE VARIOUS WALL, FLOOR, CEILING, ROOF, OR SIMILAR ASSEMBLIES.
- G5. PARTITION TERMINATION INFORMATION IS INDICATED ON THE REFLECTED CEILING PLANS AND WALL SECTIONS.
- G6. PROVIDE SOLID WOOD BLOCKING WITHIN STUD AND FURRING SPACES, BEHIND WALL MOUNTED ACCESSORIES, EQUIPMENT, ETC. AS REQUIRED FOR SECURE ANCHORAGE. ALL BLOCKING IN CONTACT WITH MASONRY SHALL BE PRESERVATIVE PRESSURE TREATED UON.
- G7. PENETRATIONS THROUGH SOUND RATED CONSTRUCTION SHALL BE SEALED W/ ACOUSTICAL SEALANT.
- G8. REFER TO ENLARGED PLANS FOR ADDITIONAL DIMENSIONS, PARTITION TYPES AND OTHER INFORMATION THAT MAY NOT APPEAR ON 1/8" SCALE PLANS.
- G9. DOOR AND WINDOW OPENING DIMENSIONS ARE NOMINAL IN ALL WALL LOCATIONS. FOR EXAMPLE, A 4'-0" WIDE MASONRY OPENING MAY ACTUALLY BE 4'-0 3/8" WIDE. EXCESSIVE JOINTS (OVER 1/2") AT WINDOW JAMBS AND HEADS WILL NOT BE ACCEPTABLE. ALL OPENINGS MUST BE FIELD VERIFIED TO COORDINATE FRAME DIMENSIONS WITH ACTUAL OPENING.
- G10. THE CONTRACTOR SHALL MAINTAIN AND KEEP ALL MASONRY WALL CAVITIES, MASONRY EXPANSION AND CONTROL JOINTS FREE OF MORTAR AND MORTAR DROPPINGS AT ALL TIMES. REFER TO CONTROL JOINT DETAILS FOR ADDITIONAL INFORMATION. REFER TO WALL SECTIONS AND DETAILS FOR ADDITIONAL EXPANSION JOINT REQUIREMENTS.
- G11. THE GENERAL CONTRACTOR SHALL COORDINATE THE WORK OF ALL TRADES. EXAMINE ALL CIVIL, STRUCTURAL, PLUMBING, MECHANICAL, AND ELECTRICAL DOCUMENTS. MUCH OF THE INFORMATION IS NOT REPEATED OR SHOWN IN THE ARCHITECTURAL DOCUMENTS.
- G12. REFER TO LIFE SAFETY PLAN SHEETS LS01 & LS02 FOR LOCATIONS OF FIRE EXTINGUISHER CABINETS AND BRACKET MOUNTED FIRE EXTINGUISHERS.
- G13. FURNITURE AND EQUIPMENT SHOWN DASHED IS NOT IN CONTRACT, U.O.N.
- G14. WHERE STRUCTURAL MEMBERS ARE EXPOSED TO VIEW, GC MAY BE REQUIRED TO ROUTE CONDUIT AND PIPE THROUGH FIELD-DRILLED HOLES. COORDINATE ROUTES AND OBTAIN PRIOR APPROVAL FOR SIZE AND LOCATION OF HOLES FROM ARCHITECT.

**IMPORTANT:
PLEASE READ ALL RFI'S
AND ASI'S ASSOCIATED
WITH THIS DRAWING**

- ASI-002
- ASI-012
- ASI-016
- RFI-007
- RFI-105

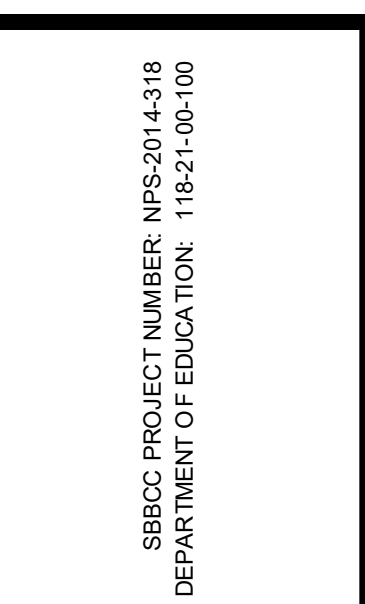


OVERALL FIRST FLOOR PLAN
SCALE: 1/16" = 1'-0"
PLAN NORTH



DATE	PROJECT	DESIGNED	RRMM	RRMM	RRMM	MARK	DATE	DESCRIPTION
06-19-2015	01-12-2016	05-25-2016	RRMM	RRMM	RRMM	RRMM	RRMM	RRMM

DATE	PROJECT	DESIGNED	RRMM	RRMM	RRMM	RRMM	RRMM	RRMM
04-06-2015	1010523	1010523	RRMM	RRMM	RRMM	RRMM	RRMM	RRMM



PROJECT: CITY OF NORFOLK AND NORFOLK PUBLIC SCHOOLS
LARCHMONT ELEMENTARY SCHOOL
1145 BOLLING AVE.
NORFOLK, VIRGINIA 23508

DRAWING: OVERALL FIRST FLOOR PLAN

SHEET: A-003