

L-102

NOTE:

- EXISTING TREES PRESERVED AND COUNTED AS STREET FRONTAGE MUST BE IN HEALTHY CONDITION AT TIME OF INSPECTION OR LOST TREES MUST BE MITIGATED FOR AS DETERMINED BY THE CITY OF NORFOLK FORESTER.

NOTE: REVISION 6  
ADDRESSES RFI-022,  
RFI-023, RFI-024, RFI-025,  
GENERATOR FENCELINE  
REVISION, E&S FILED  
REVISION, AND REDUCED  
FOUNDATION PLANTINGS

**IMPORTANT:  
PLEASE READ ALL RFI'S  
AND ASI'S ASSOCIATED  
WITH THIS DRAWING**

ASI-015

ASI-017

LOT OPEN SPACE

- 21.31 ACRE SITE OR 928,320.10 SF
- OPEN SPACE TO BE 10% OF SITE
- 92,832 SF OPEN SPACE REQUIRED
- 724,185 PROVIDED**

INTERIOR LOT COVERAGE

- INTERIOR PLANTING TO BE 10% OF PARKING AREA
- 30,272 SF OF PARKING AREA
- 3,028 SF OF PLANTED AREA REQUIRED
- 4,106 SF PROVIDED**

CANOPY TREES

- 1 LARGE CANOPY TREE PER 25 LF OF LOT WIDTH
- BOLLING AVE - 1,242 LF = 50 TREES
- HAMPTON BLVD - 424 LF = 17 TREES
- 67 TREES REQUIRED

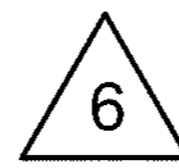
BOLLING AVE - 46 TREES PROVIDED / 4 EXISTING TREES PRESERVED  
HAMPTON BLVD - 4 TREES PROVIDED / 13 EXISTING TREES PRESERVED

CBPA MITIGATION:

- (3) TREES TO BE REMOVED (0-12 DBH INCHES)
- (6) 1-1/2 INCH CALIPER LARGE CANOPY TREES PROVIDED**

ADDITIONAL PLANTING REQUIREMENTS

- LARGE CANOPY TREES SPACED 25' O.C. AROUND PARKING
- SHRUBS TO SCREEN PARKING FROM ROAD IN 6 FOOT BED
- FOUNDATION PLANTINGS REQUIRED WHERE BUILDING FACES ROW.
- SCREEN DUMPSTER AREA



Space new trees between existing trees where possible

COLLEY BAY

LARCHMONT ELEMENTARY SCHOOL (PROPOSED)

HAMPTON BLVD

BOLLING AVENUE

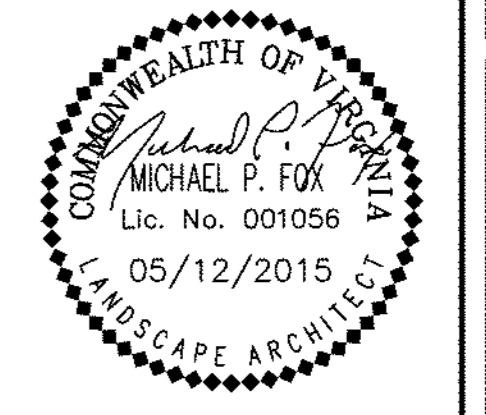
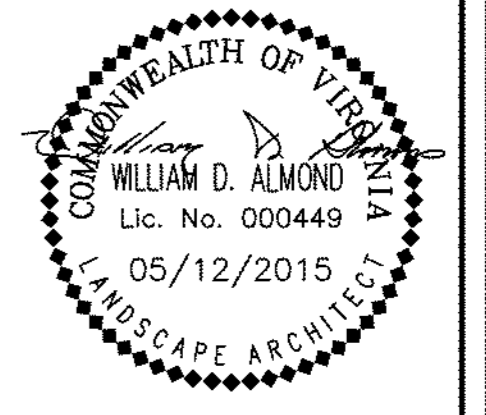
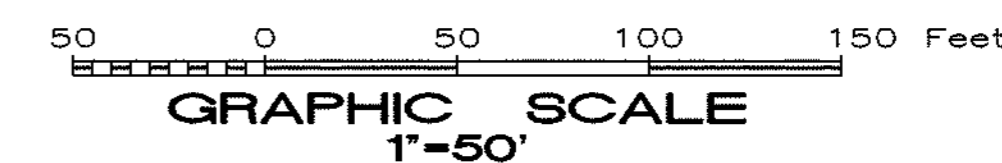
L-103

4 REDBUD TREES @ 50' o/c

10 REDBUD TREES @ 50' o/c

2 REDBUD TREES @ 50' o/c

L-104



REVISION# 04/07/2016 - ASI-015

DATE	05-12-15	DIC	ELR	WDA
PROJECT	214-0227	DESIGNED	DRAWN	CHECKED

PROJECT CITY OF NORFOLK AND NORFOLK PUBLIC SCHOOLS  
LARCHMONT ELEMENTARY SCHOOL  
1145 BOLLING AVENUE  
NORFOLK, VIRGINIA  
DRAWING

SBRCC PROJECT NUMBER: NPS-2014-318  
VIRGINIA DEPARTMENT OF EDUCATION: 118-21-00-100

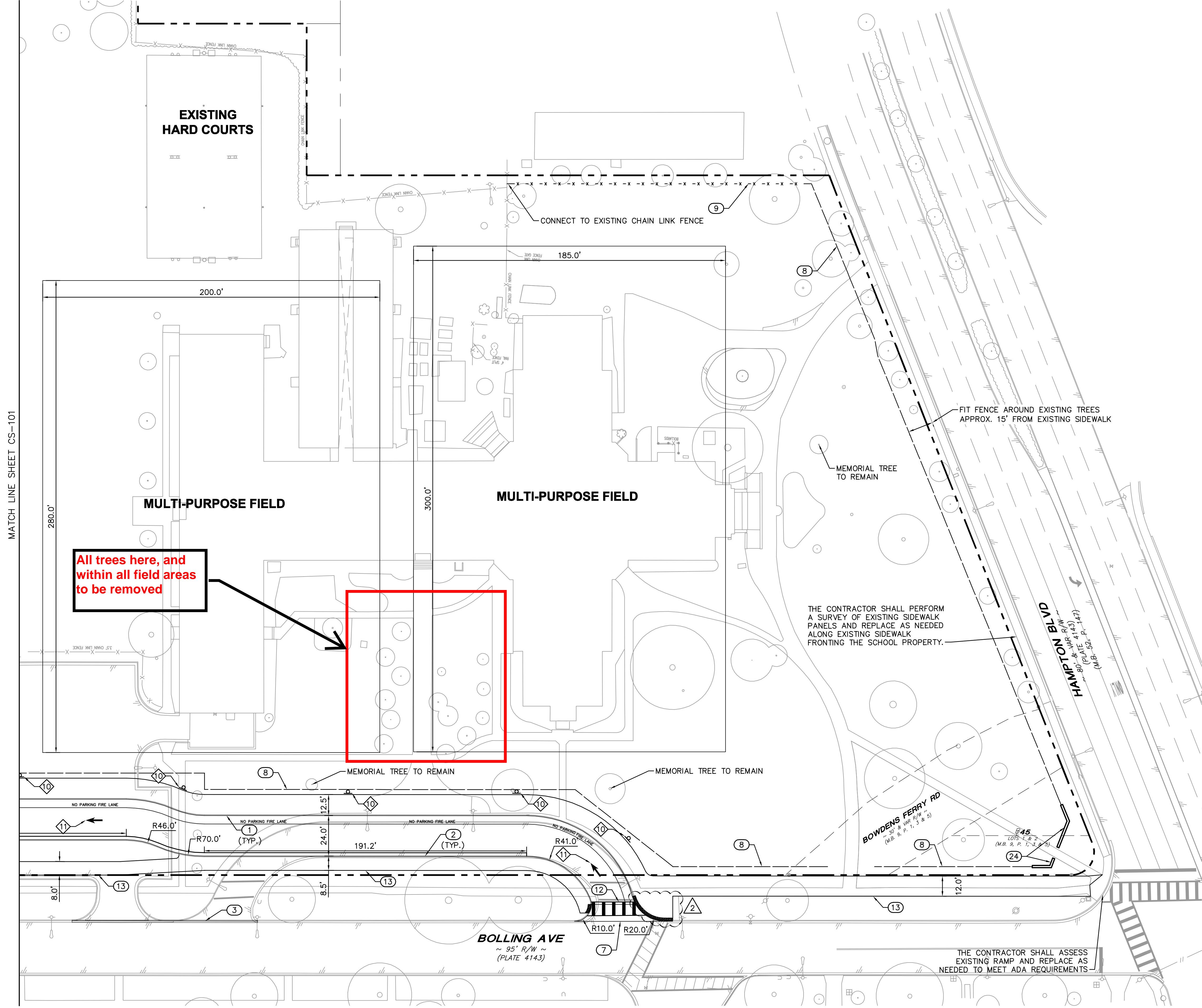
OVERALL PLANTING PLAN

SHEET  
L-101

FILE NAME: W:\Design Plans\214-0227 Larchmont Elementary School\Drawings\214-0227 LARCHMONT Planting - VE.dwg LAYOUT NAME: L-101 PLOTTED: Wednesday, April 08, 2016 - 5:04pm

FILE NAME: K:\16210016 - Norfolk PPE\Architect\Drawings\Site\16210016-CS102 SITE.dwg LAYOUT NAME: CS102 PLOTTED: Thursday, June 18, 2015 - 12:10pm

This document, together with the concepts and designs presented herein, is intended only for the specific purpose and client for which it was prepared. Reuse of and improper reliance on this document without written authorization and adaptation by Kimley-Horn and Associates, Inc. shall be without liability to Kimley-Horn and Associates, Inc.



**IMPORTANT:**  
PLEASE READ ALL RFI'S  
AND ASI'S ASSOCIATED  
WITH THIS DRAWING

ASI-002

ASI-017

RFI-099



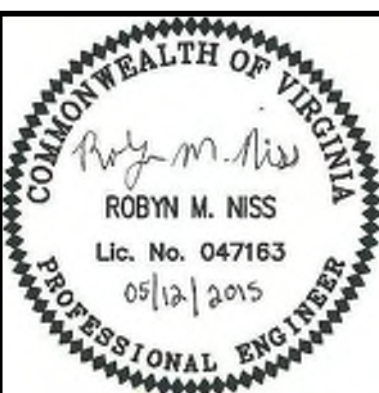
**SITE KEYNOTES**

- ① NORFOLK STD. HS-201 CURB
- ② NORFOLK STD. HS-202 CURB AND GUTTER
- ③ NORFOLK STD. CI\_01 24" CURB AND GUTTER
- ④ NORFOLK STD. CONCRETE BUMPER LOG
- ⑤ VDOT STD. CG-12 TYPE A RAMP
- ⑥ VDOT STD. CG-12 TYPE B RAMP
- ⑦ NORFOLK STD. COMMERCIAL ENTRANCE HS-212
- ⑧ DECORATIVE FENCE (SEE ARCH PLANS)
- ⑨ 4' BLACK VINYL COATED CHAIN LINK FENCE
- ⑩ GENERATOR PAD
- ⑪ TRANSFORMER PAD
- ⑫ CROSSWALK
- ⑬ NORFOLK STD. SIDEWALK
- ⑭ DUMPSTER PAD
- ⑮ SCREEN WALL (SEE ARCH. PLANS)
- ⑯ BASKETBALL HOOP
- ⑰ BIKE RACK (10 CAPACITY)
- ⑱ FLAG POLE
- ⑲ OUTDOOR CLASSROOM
- ⑳ PLAY EQUIPMENT
- ㉑ WETLANDS PLATFORM
- ㉒ 6" BOLLARD
- ㉓ RELOCATED BI-DIRECTIONAL OVERHEAD FLASHING SIGN
- ㉔ MONUMENT ENTRY FEATURE (SEE ARCH. PLANS)

**SIGN AND MARKING KEYNOTES**

- ① "DO NOT ENTER" R5-1 SIGN
- ② "SPEED LIMIT 25" R2-1 SIGN
- ③ "BUSES ONLY" SIGN
- ④ "STOP" R1-1 SIGN
- ⑤ "NO LEFT TURNS" R3-2 SIGN
- ⑥ "NO RIGHT TURNS" R3-1 SIGN
- ⑦ ACCESSIBLE "RESERVED PARKING" R7-8 SIGN
- ⑧ "VAN ACCESSIBLE" PARKING R7-8P SIGN
- ⑨ "KEEP RIGHT" R4-7B SIGN
- ⑩ "NO PARKING FIRE LANE TOWING ENFORCED" SIGN AND STRIPING
- ⑪ DIRECTIONAL ARROW
- ⑫ ACCESSIBLE PARKING PAVEMENT STRIPING
- ⑬ 4" WHITE PARKING PAVEMENT STRIPE

DATE	PROJECT	DESIGNED	DRAWN	CHECKED
MAY 12, 2015		10/05/23		



PROJECT  
NEW LARCHMONT ELEMENTARY SCHOOL  
SITE PLANS  
NORFOLK PUBLIC SCHOOLS  
1145 BOLLING AVENUE  
NORFOLK, VIRGINIA

DRAWING  
SBCC PROJECT NUMBER: NPS-2014-318  
VIRGINIA DEPARTMENT OF EDUCATION, 118-21-00-100

SHEET  
CS-102

