

# BROOME CHINATOWN REVITALISATION

THE HEART AND SOUL OF BROOME

## ROEBUCK BAY RECONNECTION FEASIBILITY STUDY

The Roebuck Bay Reconnection Feasibility will investigate the construction of a proposed boardwalk along the Roebuck Bay frontage (eastern side of Dampier Terrace properties) between Streeter's Jetty in the North and the Pearl Luggers in the south.

The new boardwalk would contain a seawall forming part of the long term coastal protection strategy for Chinatown. The boardwalk will include interpretive material to experience the mangroves, and provide opportunity for landscaped area in front of Streeter's Jetty and compliment the potential for further waterfront development.

The project intends to:

- Provide a scenic walk with potential for alfresco activities.
- Enable a long term re-focusing of the Chinatown social and economic community to include the waterfront.
- Facilitate engineering design urgently required for coastal protection.

The ultimate deliverable of the project is the consolidation of investigations, design and analysis into a Business Case in support of funding and / or private sector investment to deliver the project.



## CHINATOWN REVITALISATION PROJECT

On Wednesday 8 June 2016, the state government announced the Royalties for Regions investment of \$10M to undertake detailed feasibility studies and to deliver transformational projects, reinforcing Chinatown as the cultural, historical and commercial centre of Broome.

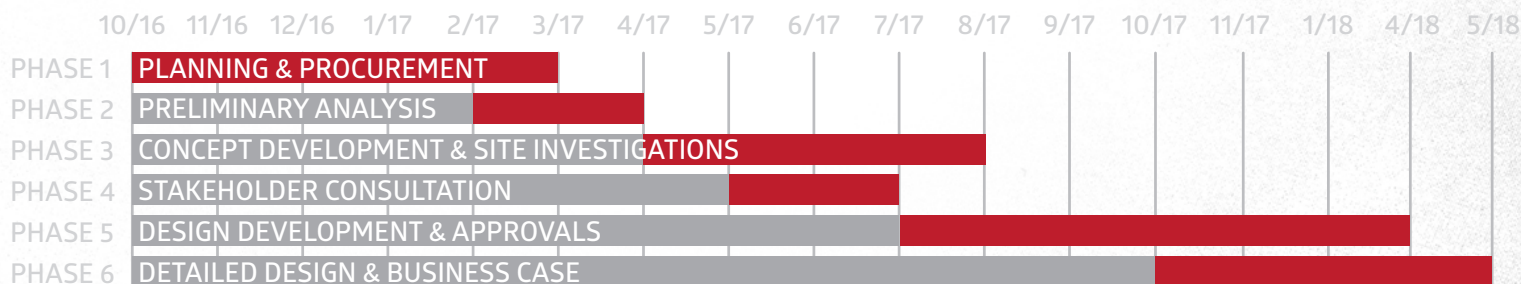
The Shire of Broome has committed \$2M to the project with Tourism WA committing a further \$700K which brings the total project budget to \$12.7M.

The projects identified to be key drivers in the revitalisation of Chinatown were mostly drawn from the Shire's 2013 Chinatown Development Strategy, developed following extensive community consultation.

The majority of funds will be spent over the next 18 months on projects that improve the aesthetics, comfort and functionality of Chinatown as a place to socialise and do business. Some funds have also been set aside to investigate the feasibility of more significant projects that will strengthen Chinatown over the longer term.

Implementation of the projects and oversight of the feasibility studies will be undertaken jointly by the Shire of Broome, Kimberley Development Commission and LandCorp. A Community and Stakeholder Reference Group has been established by the Shire and consultation with the wider community and key stakeholders will continue throughout the process.

This project is made possible by the State Government's Royalties for Regions program.



**THE BROOME CHINATOWN REVITALISATION HAS BEEN MADE POSSIBLE BY  
THE STATE GOVERNMENT'S ROYALTIES FOR REGIONS PROGRAM**

[revitalisation@chinatownbroome.com.au](mailto:revitalisation@chinatownbroome.com.au)  
[www.chinatownbroome.com.au](http://www.chinatownbroome.com.au)



Government of Western Australia  
Department of Regional Development



ROYALTIES  
FOR REGIONS



LANDCORP