

BROOME CHINATOWN REVITALISATION

THE HEART AND SOUL OF BROOME

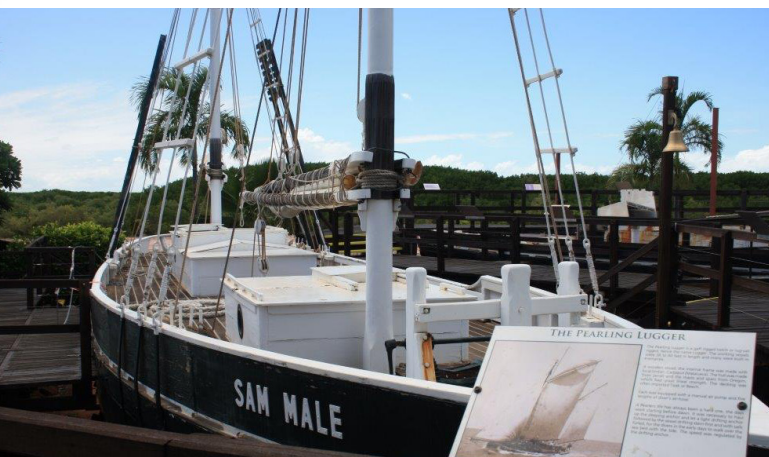
TOURIST REST FACILITIES

The carpark adjacent to the Pearl Luggar building on Dampier Terrace has been identified as a location for tourist rest facilities. This could include the construction of toilet facilities, shade structures, street furniture, parking, power and lighting, barbeques and a pocket park acting as a way point for visitors. Other aspects of the project include wayfinding and signage to reinforce traffic to Chinatown and provision of parking for larger vehicles.

The purpose of the tourist rest facilities adjacent to Pearl Luggers is to:

- Provide larger parking spaces for bigger vehicles / tourists.
- Attract more visitors to Chinatown.
- Provide an active place for tourist and locals alike to congregate and enjoy within the vicinity of Chinatown.

Successful construction of the Tourist Rest Facilities will provide improved amenities and parking areas for visitors and locals



CHINATOWN REVITALISATION PROJECT

On Wednesday 8 June 2016, the state government announced the Royalties for Regions investment of \$10M to undertake detailed feasibility studies and to deliver transformational projects, reinforcing Chinatown as the cultural, historical and commercial centre of Broome.

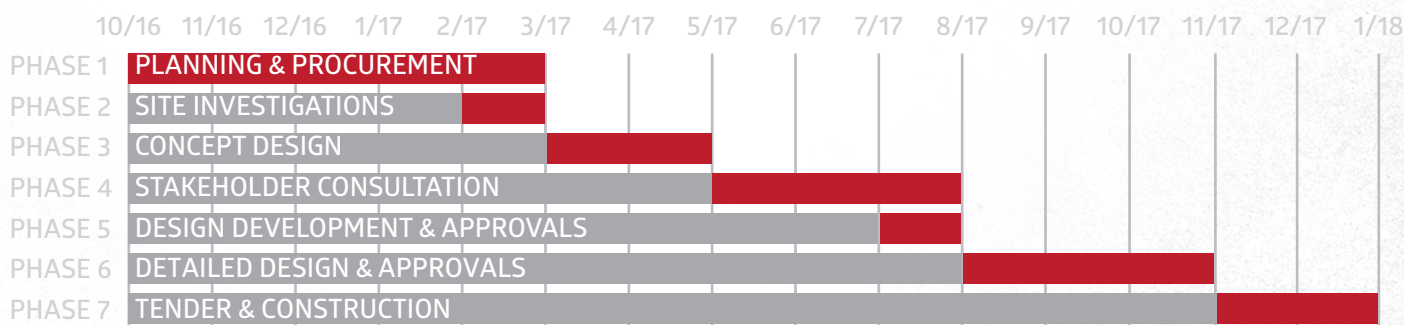
The Shire of Broome has committed \$2M to the project with Tourism WA committing a further \$700K which brings the total project budget to \$12.7M.

The projects identified to be key drivers in the revitalisation of Chinatown were mostly drawn from the Shire's 2013 Chinatown Development Strategy, developed following extensive community consultation.

The majority of funds will be spent over the next 18 months on projects that improve the aesthetics, comfort and functionality of Chinatown as a place to socialise and do business. Some funds have also been set aside to investigate the feasibility of more significant projects that will strengthen Chinatown over the longer term.

Implementation of the projects and oversight of the feasibility studies will be undertaken jointly by the Shire of Broome, Kimberley Development Commission and LandCorp. A Community and Stakeholder Reference Group has been established by the Shire and consultation with the wider community and key stakeholders will continue throughout the process.

This project is made possible by the State Government's Royalties for Regions program.



THE BROOME CHINATOWN REVITALISATION HAS BEEN MADE POSSIBLE BY THE STATE GOVERNMENT'S ROYALTIES FOR REGIONS PROGRAM

revitalisation@chinatownbroome.com.au
www.chinatownbroome.com.au



Government of Western Australia
Department of Regional Development



ROYALTIES
FOR REGIONS



LANDCORP