

Nick de León | Annabelle Brotherton

Drawing on Life

No 20
20 Cross Street
N1 2BG London

No 20 presents 'Drawing on Life', a retrospective exhibition by Nick de León and recent work by Annabelle Brotherton.

De León's work spans ten years and showcases the artist's evolution from the figurative to increasing levels of abstraction, and his most recent foray in the world of photography.

Playful, twisted, fragmented and sometimes even tortured, de León's earlier figurative works explore the human form, but as a linear point of departure for a deeper and personal exploration of consciousness and the nature of time.

De León's later abstract work, while still drawing on a similar concept, is characterised by intense layers of colour, often applied directly by hand and then vigorously reworked on the surface of the paper, creating a sense of restless movement, while the constantly shifting and overlaying figures represent the fragility of time.

In his most recent photographic work, de León joins abstract and figurative, exploring nature, mirrored quite literally in a reflective surface or membrane. These highly painterly images, at first playful and then unsettling, look at the ecological consequences of mankind's actions and examine how a ripple or small distortion can affect every element residing in a specific ecological system.

Nick de León: Drawing on Life is at No 20 from September 1 to 22.



De León, Barcelona 4



De León, Viana

No 20

Annabelle Brotherton is a painter known for her gestural, expressive paintings and drawings that capture the sensation of immediacy combined with emotional depth.

Brotherton searches for the internal rhythm in a subject, particularly in the human form, while suggesting a deeper narrative about the lives of her subjects.

“When a picture develops a ‘life’ of its own and starts to lead the way, that is where the real challenge begins; often the greatest battles on canvas can lead to the most successful pieces. Knowing when to stop and capture the energy on the canvas is just like netting a butterfly - holding on to something magical without crushing its wings.”

About the artists

A Fellow of the Royal College of Art and the Royal Society of Arts, Nick de León is currently Head of the Service Design Department at the Royal College of Art which he started in 2011. Prior to that, he was the director of Design London where he brought together the disciplines of design from the Royal College of Art, with technology and business from Imperial College London.

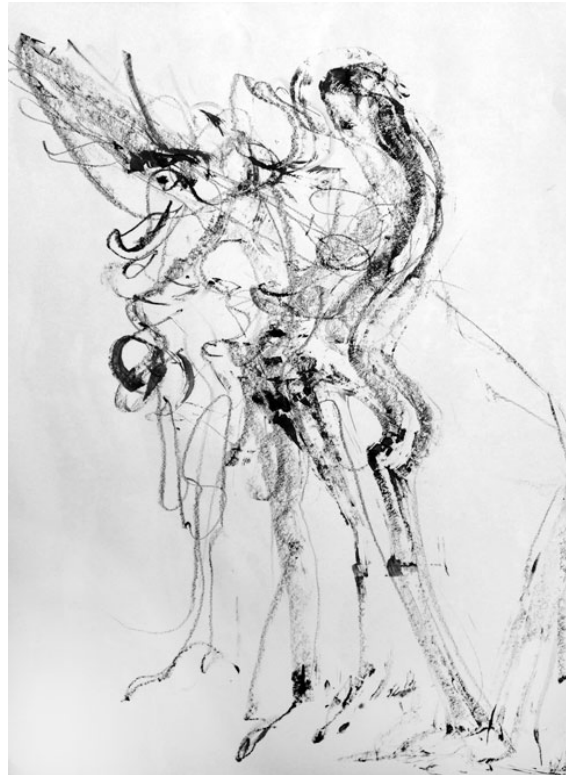
Annabelle Brotherton lives by the coast in the south east of England having studied oil painting at the Slade, and was taught by Bobby Gill from the Royal College of Art. She has exhibited in both solo as well as group shows at the Conningsbury in London, Kelham Island in Sheffield, the Derwent Wye Gallery in Derbyshire and has been selected and sold work in the Royal Academy Summer Exhibition.

About the gallery

Opened in January 2017, No 20 is a centre for contemporary art founded by collector Michael Johnson.

Envisioned as a multi-functional space, No 20 hosts a programme of exhibitions, performances and events that support emerging and established artists working across all media.

www.no20arts.com
info@no20arts.com
+44 (0)207 226 9083



Brotherton, Wings



De León, Standing Female Figure