

MODEL 830

Ezy-Glide
Inc.

MODEL 840

MODEL 870

REPLACEMENT CABLE INSTALLATION

CUSTOMER ASSISTANCE 1-800-874-7861

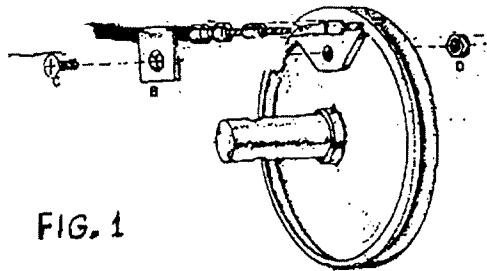


FIG. 1

STEP 1: Insert cable core into slot on spool as illustrated in Figure 1. After the core is placed into slot place clamp into position over the cable core and align clamp hole with the clamp hole in the spool. Use the clamp screw and clamp lock nut to secure clamp. Torque set screw to a minimum of 60 inch lbs. Do not exceed 75 inch lbs.

Place spool into back housing and rotate the spool clockwise so the clamp section will be at the bottom. As illustrated in Figure 2. Make certain that the cable collar is positioned correctly at the cable entry to the housing. With is accomplished

place the front housing into position and align housing pins with pin holes. The pins are molded into the housing for the purpose of snapping the front and back housing together in order to free hands to install the housing bolts and nuts. If the housings do not snap together, make sure that the cable is not pinched between the housings.

With the housing correctly snapped together, insert your housing bolts through housing holes. Note that the four reinforced holes on the housings are the holes used in mounting the helm to the boat. Refer to note at the bottom of Figure 3.

After re-installing the lever, make a visual and operational check to make sure the lever will make its full travel and that the output ram of the cable is making full travel.

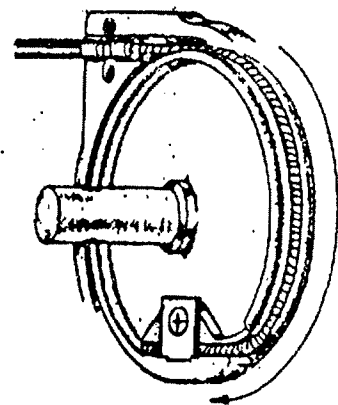
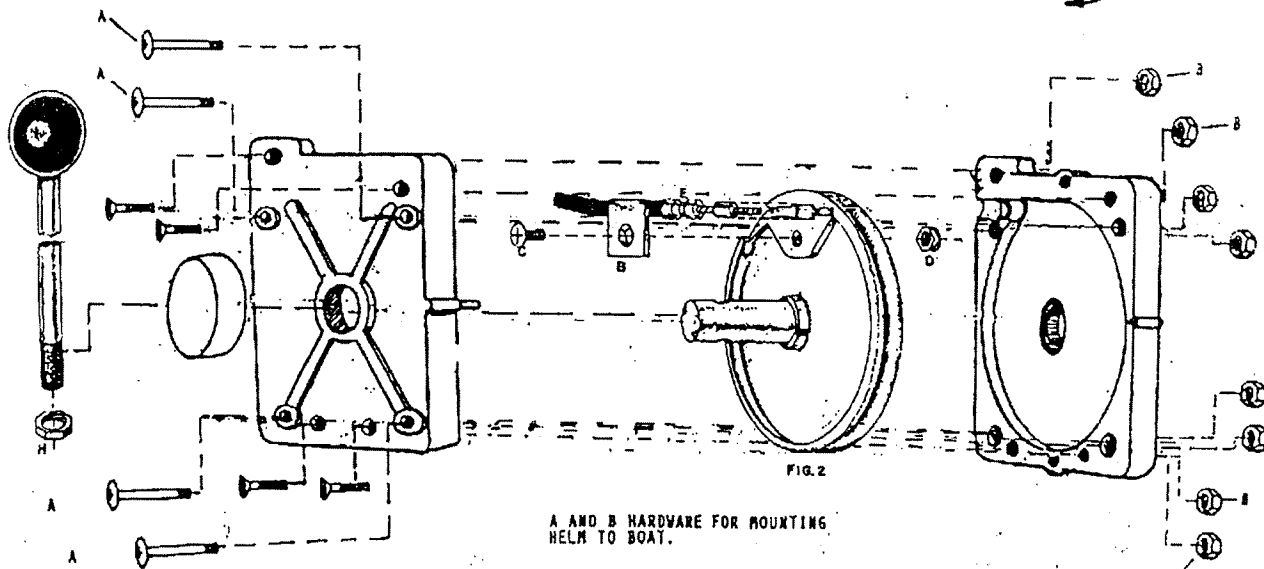


FIG. 2

CUSTOMER ASSISTANCE 1-800-874-7861



A AND B HARDWARE FOR MOUNTING HELM TO BOAT.

NO GREASE! Use only lightweight machine oil (Sewing Machine Oil, 3-in-1 Oil, etc.) to lubricate your Ezy-Glide steering system and cable.