

MATERIA

MALKIA WILLIAMS

TRACES



On view May 15th - June 14th, 2024

FURNITURE LIGHTING OBJECTS

**305 CANAL ST PH5 NEW YORK, NY 10013
646.476.2623 GALLERY@MATERIADESIGNS.COM**

MATERIA

MALKIA WILLIAMS TRACES

In my artistic practice, I explore the intersection between metals, fibers and the human body/anatomy. Much of my excitement as an artist not only comes from bringing ideas to life but also through material exploration, which carries over into deciding what methods to use on a new piece. Metals, fibers and the human body, when pushed past a certain point in terms of physical manipulation, are made stronger, by an action that otherwise might seem harmful or destructive.

In my exploration of materials and how the human body can be interpreted in many different forms, I use methods such as casting metal, using both sand and silicone molds. Most frequently I use my own body as a form and starting point for the mold. Needle felting wool, into shapes that would not ever be thought of as soft and squishy, such as teeth, chain links, or bones, is another way that I experience and understand the material in a new way. Another form of discovery for me is forming ceramic clay into detailed, abstract, and literal sculptural representations, like a self-portrait bust of myself. I take inspiration not only from the physical structures within our bodies but also from naturally formed objects in nature, as well as industrial structures and how they operate similarly to the human body. The work being shown is significant to my practice because it marks a point in time where I was able to experiment and re-discover materials, processes, and techniques. Something that can be seen within the pieces in this show is my curiosity regarding scale and reality, as well as the extensive combination of different colors, textures, weights, and sizes utilized.

My goal in showing such a wide array of work is to share and convey not only how I think about bodies and human anatomy but also the environments we are in daily.

- Malkia Williams

FURNITURE LIGHTING OBJECTS

305 CANAL ST PH5 NEW YORK, NY 10013
646.476.2623 GALLERY@MATERIADESIGNS.COM

MATERIA

MALKIA WILLIAMS *TRACES*



Open Wide, 2023

8ø x 6 in

*earthenware clay, metallic glaze, ceramic glaze,
stainless steel, ball piercing, sterling silver hoop*

FURNITURE LIGHTING OBJECTS

**305 CANAL ST PH5 NEW YORK, NY 10013
646.476.2623 GALLERY@MATERIADDESIGNS.COM**

MATERIA

MALKIA WILLIAMS *TRACES*



In Hand, 2023

*4.5 x 4 x 8 in
aluminum casting (silica sand mold)*

FURNITURE LIGHTING OBJECTS

**305 CANAL ST PH5 NEW YORK, NY 10013
646.476.2623 GALLERY@MATERIADESIGNS.COM**

MATERIA

MALKIA WILLIAMS *TRACES*



Cage, 2022

*3 x 2.5 x 4.5 in
aluminum casting (silica sand mold)*

SOLD

FURNITURE LIGHTING OBJECTS

**305 CANAL ST PH5 NEW YORK, NY 10013
646.476.2623 GALLERY@MATERIADESIGNS.COM**

MATERIA

MALKIA WILLIAMS *TRACES*



Petroleum Buzz, 2023

*2 x 1.75 in
rolled recycled plastic, copper tubing, brass sheet*

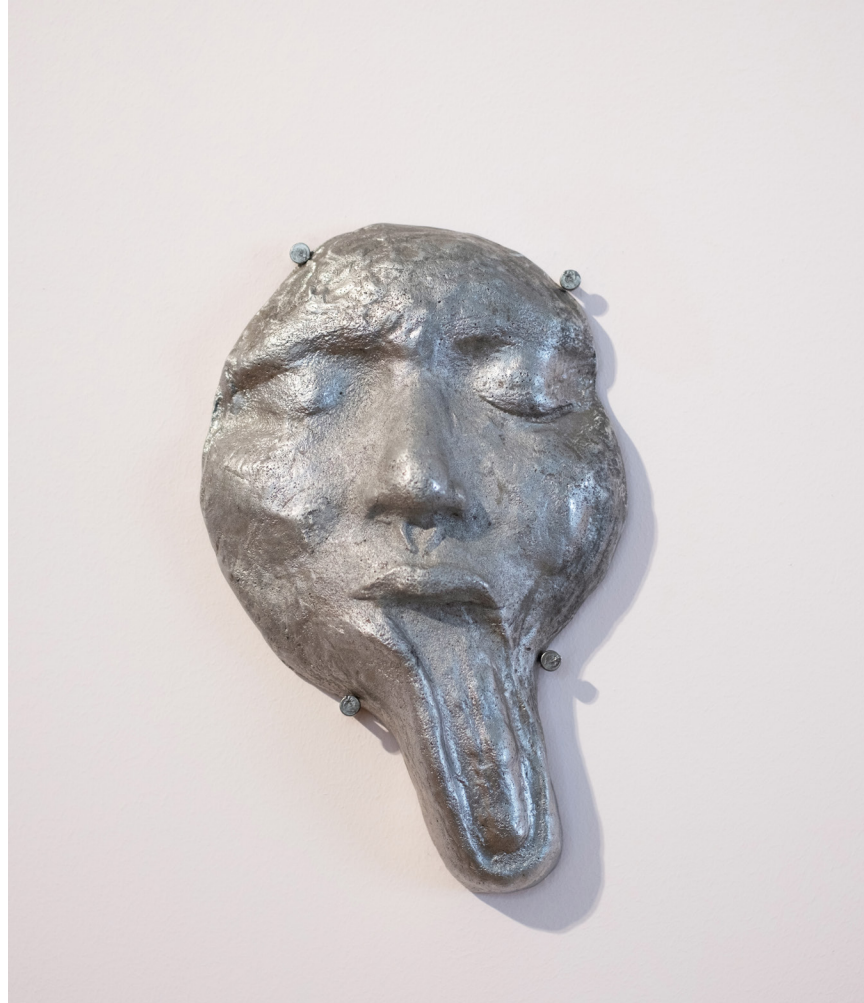
SOLD

FURNITURE LIGHTING OBJECTS

**305 CANAL ST PH5 NEW YORK, NY 10013
646.476.2623 GALLERY@MATERIADDESIGNS.COM**

MATERIA

MALKIA WILLIAMS *TRACES*



Taste, 2023

5 x 2 x 9 in

aluminum casting (silica sand mold)

FURNITURE LIGHTING OBJECTS

**305 CANAL ST PH5 NEW YORK, NY 10013
646.476.2623 GALLERY@MATERIADESIGNS.COM**

MATERIA

MALKIA WILLIAMS *TRACES*



In the clouds, 2023

*1.25 x 4.5 in
rolled recycled plastic, copper rivets, brass sheet,
recycled nylon thread*

SOLD

FURNITURE LIGHTING OBJECTS

**305 CANAL ST PH5 NEW YORK, NY 10013
646.476.2623 GALLERY@MATERIADESIGNS.COM**

MATERIA

MALKIA WILLIAMS *TRACES*



Untitled, 2023

*2.25 x 1.75 in
recycled balloon ribbon, brass sheet, brass rivets,
needle felted Merino wool*

FURNITURE LIGHTING OBJECTS

**305 CANAL ST PH5 NEW YORK, NY 10013
646.476.2623 GALLERY@MATERIADESIGNS.COM**

MATERIA

MALKIA WILLIAMS *TRACES*



Sensory Appreciation, 2023

7 x 6.5 x 4 in

half round sterling silver wire, needle felted Merino wool

FURNITURE LIGHTING OBJECTS

**305 CANAL ST PH5 NEW YORK, NY 10013
646.476.2623 GALLERY@MATERIADESIGNS.COM**

MATERIA

MALKIA WILLIAMS *TRACES*



Secret, 2023

*2.25 x 1.5 x 3.5 in
ceramic shell pewter casting*

FURNITURE LIGHTING OBJECTS

**305 CANAL ST PH5 NEW YORK, NY 10013
646.476.2623 GALLERY@MATERIADESIGNS.COM**

MATERIA

MALKIA WILLIAMS *TRACES*



Held, 2023

24 x 14 x 48 in

leather scraps, waxed cotton thread, brass wire, ocean rock

FURNITURE LIGHTING OBJECTS

**305 CANAL ST PH5 NEW YORK, NY 10013
646.476.2623 GALLERY@MATERIADESIGNS.COM**

MATERIA

MALKIA WILLIAMS *TRACES*



Business, 2023

*3 x 2.5 in
letter stamped brass sheet*

SOLD

FURNITURE LIGHTING OBJECTS

**305 CANAL ST PH5 NEW YORK, NY 10013
646.476.2623 GALLERY@MATERIADESIGNS.COM**

MATERIA

MALKIA WILLIAMS *TRACES*



Look Closely, 2023

*15 x 10 x 14 in
earthenware ceramic clay, ceramic glaze*

FURNITURE LIGHTING OBJECTS

**305 CANAL ST PH5 NEW YORK, NY 10013
646.476.2623 GALLERY@MATERIADDESIGNS.COM**

MATERIA

MALKIA WILLIAMS *TRACES*



Sheep's Knuckle, 2023

*1.25 x .75 x .75 in
pewter casting*

FURNITURE LIGHTING OBJECTS

**305 CANAL ST PH5 NEW YORK, NY 10013
646.476.2623 GALLERY@MATERIADESIGNS.COM**

MATERIA

MALKIA WILLIAMS *TRACES*



Finger Sculpture I, 2023

*1.75 x 1 x .25 in
half round sterling silver wire*

SOLD

FURNITURE LIGHTING OBJECTS

**305 CANAL ST PH5 NEW YORK, NY 10013
646.476.2623 GALLERY@MATERIADESIGNS.COM**

MATERIA

MALKIA WILLIAMS *TRACES*



Finger Sculpture II, 2023

*.75 x 1 x .25 in
half round sterling silver wire*

SOLD

FURNITURE LIGHTING OBJECTS

**305 CANAL ST PH5 NEW YORK, NY 10013
646.476.2623 GALLERY@MATERIADESIGNS.COM**

MATERIA

MALKIA WILLIAMS *TRACES*



Finger Sculpture III, 2023

*1.5 x 1 x .25 in
half round sterling silver wire*

SOLD

FURNITURE LIGHTING OBJECTS

**305 CANAL ST PH5 NEW YORK, NY 10013
646.476.2623 GALLERY@MATERIADESIGNS.COM**

MATERIA

MALKIA WILLIAMS *TRACES*



LB Dish, 2024

*9 x 6.5 x 2 in
aluminum casting (silica sand mold)*

FURNITURE LIGHTING OBJECTS

**305 CANAL ST PH5 NEW YORK, NY 10013
646.476.2623 GALLERY@MATERIADDESIGNS.COM**

MATERIA

MALKIA WILLIAMS *TRACES*



Ring A, 2023

size 6

sterling silver strip, sterling silver jump ring

FURNITURE LIGHTING OBJECTS

**305 CANAL ST PH5 NEW YORK, NY 10013
646.476.2623 GALLERY@MATERIADESIGNS.COM**

MATERIA

MALKIA WILLIAMS *TRACES*



Ring B, 2024

size 13

art clay silver (PMC)

FURNITURE LIGHTING OBJECTS

**305 CANAL ST PH5 NEW YORK, NY 10013
646.476.2623 GALLERY@MATERIADESIGNS.COM**

MATERIA

MALKIA WILLIAMS *TRACES*



Ring C, 2023

size 12

sterling silver half-round wire, sterling silver heat-formed blobs

FURNITURE LIGHTING OBJECTS

**305 CANAL ST PH5 NEW YORK, NY 10013
646.476.2623 GALLERY@MATERIADESIGNS.COM**

MATERIA

MALKIA WILLIAMS *TRACES*



Bread Tag, 2024

1 x 1 in

art clay silver (PMC), lab grown ruby

FURNITURE LIGHTING OBJECTS

**305 CANAL ST PH5 NEW YORK, NY 10013
646.476.2623 GALLERY@MATERIADESIGNS.COM**

MATERIA

MALKIA WILLIAMS *TRACES*



Silver Tooth, 2024

*.5 x .5 x .75 in
art clay silver (PMC) pendant*

FURNITURE LIGHTING OBJECTS

**305 CANAL ST PH5 NEW YORK, NY 10013
646.476.2623 GALLERY@MATERIADDESIGNS.COM**

MATERIA

MALKIA WILLIAMS *TRACES*



Meres, 2023

*3 x 5 in
brass sheet*

SOLD

FURNITURE LIGHTING OBJECTS

**305 CANAL ST PH5 NEW YORK, NY 10013
646.476.2623 GALLERY@MATERIADDESIGNS.COM**

MATERIA

MALKIA WILLIAMS *TRACES*



Flow, 2023

1.5 x 2.5 in

engraved brass sheet, needle felted Merino wool, cotton thread

FURNITURE LIGHTING OBJECTS

**305 CANAL ST PH5 NEW YORK, NY 10013
646.476.2623 GALLERY@MATERIADESIGNS.COM**

MATERIA

MALKIA WILLIAMS *TRACES*



Rooted, 2023

*2.5 x .5 x 4 in
brass sheet, needle felted Merino wool, brass rivets*

FURNITURE LIGHTING OBJECTS

**305 CANAL ST PH5 NEW YORK, NY 10013
646.476.2623 GALLERY@MATERIADESIGNS.COM**

MATERIA

MALKIA WILLIAMS *TRACES*



Weighted, 2024

*16 x 4 x 20 in
needle felted Merino wool, sterling silver round wire*

FURNITURE LIGHTING OBJECTS

**305 CANAL ST PH5 NEW YORK, NY 10013
646.476.2623 GALLERY@MATERIADESIGNS.COM**