

EST 1887

# SMYTHSON

OF BOND STREET



SPRING SUMMER 2016

## SUMMER DAWN

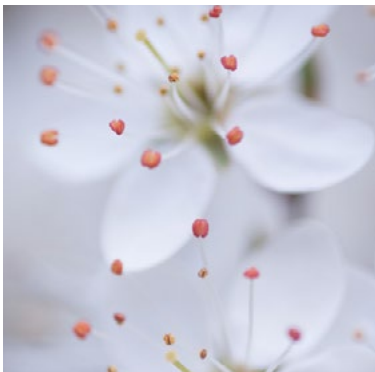
SMYTHSON GLIDES EFFORTLESSLY INTO THE SPRING SUMMER SEASON, WITH SUBTLE SHADES INSPIRED BY AN ENGLISH COUNTRY GARDEN AT DAWN.

For Spring Summer 2016, Smythson draws inspiration from the grounds of Charleston - the Sussex country abode of Virginia Woolf and the Bloomsbury Set. Within this secluded setting ink blue skies hover over dew-covered grass, muted wildflowers and lily ponds. In this quintessential painters' garden, Vanessa and Quentin Bell's stone statues also take on an ethereal quality at first light.

The early morning mist is reflected in a quietly luxurious colour palette. Here, powdery shades of primrose, blossom, paper white and dew are complemented by deeper tones of clay and night blue. Elsewhere, playful details spring to life in a more vivid hue, dawn blue.

With a focus on exceptional pieces and unrivalled craftsmanship, each iconic design in this rich offering is pleasing to the touch, in honour of nature's assorted textures.

Never forsaking its rich heritage and tradition as a British luxury lifestyle brand, Smythson's renowned leather expertise and extensive knowledge of craft and up-to-the-minute techniques, makes this a highly desirable collection for both women and men.



# WOMENS

## DAY

Sleek, luxurious and delightful to behold, the *Albemarle* unveils an exciting new silhouette for Spring Summer. Carefully considered for those on the go, the perfectly formed bucket bag boasts an adjustable strap, enabling it to be worn across the body or tightly under the shoulder. The smooth finish and lightweight touch of soft calf leather together with a bonded suede interior, is second to none.

Smythson continues to build upon the iconic *1887* for the Spring Summer season, in a sumptuous new colour palette of dew and dawn blue. This classic statement bag with its sculpted contours and architectural lines is enhanced with understated tones of suede panels and discreet gold hardware.

Recognising the demand for a modern shoulder bag warranting attention wherever it goes, this season the *Berkeley* debuts in shades of dew, night blue and clay. Cut from sumptuous French calf leather and topped with a grab handle, this is an impeccable everyday piece. The click-down clasp is beautifully engineered to gently open and reveal a contrasting suede inner fold.

The *Dover* collection, comprising the *Dover* street bag and *Mini Dover* crossbody bag, ticks all the right boxes in terms of ease and functionality. Crafted from soft, supple calf leather, it introduces a range of impeccably made accessories together with a seasonal update of refined hues; dew, clay and night blue.

The *Envelope Embossed* plays on Smythson's heritage as a stationer. Meticulously crafted using double-bonded leather, its lightly embossed surface cleverly mimics the three dimensional effect of an envelope. This original design is further enhanced in a new palette of dawn blue, primrose and dew.

## BUSINESS

Beautifully constructed in supple calf leather, the *Grosvenor* collection exemplifies function and refined beauty with a considered assortment of structured offerings. Perfect for the boardroom and beyond, they include the compact top handle bag, iPad clutch and luxurious wallets, updated in new shades of dawn blue and blossom. As for the statement-making business tote with its distinguished light gold-finish corners, this also receives an injection of colour in dawn blue.

For Spring Summer, *Chameleon* sees the continuation of a stunning selection of functional workbags each with a myriad of internal organisation features. Providing intelligent solutions for busy lifestyles, these include the soft-to-the touch crossbody clutch, briefcase and business bag, updated in captivating night blue. Feminine curved contours and a grained goatskin are beautifully complemented with a navy blue zip and matching cotton twill lining.

## EVENING

Delightfully compact and strikingly beautiful, the *Brook* is the perfect accompaniment to a warm summer night. The gold-finish shoulder chain can be adjusted in single or double lengths to drape softly over the shoulder. New combinations of lambskin paired with exotic python or suede add contrast to the delicate surface texture while tones of dew and charcoal give depth to the soft contours.

In a similar vein, the collage-effect created with watersnake and Karung leather in *Lexington*, is instantly pleasing to the touch. With a soft palette of dew and primrose it is also easy on the eye. The new offering includes a zip coin purse and slim zip purse along with a series of small, medium and large zip pouches. For added allure, the beautiful zip pull shimmers like a precious gemstone.

Just as summer skies fade from night to dawn, delicate colours in the new *Avery* collection transition from one to the other with sublime effect. Here the subtle ombre technique dissolves from blossom to dove, primrose to paper white and dawn blue to taupe, on a trio of new zip purses in variations of small, medium and large. The zip pull also fades from anthracite to bronze while its shape tapers off beautifully from wide to thin.

## TRAVEL AND LIFESTYLE

As always, functionality is at the forefront of *Atlas Travel*, which is instantly recognisable for its tactile perforated globe pattern. Each zip travel wallet, passport cover and zip currency case gets a seasonal update in new shades of dawn blue and paper white. Discerning high-flyers will value the multiple pockets of the triple-zip travel pouch, designed to keep passport, boarding pass, tickets and credit cards safe in one place.

In the butter-soft *Compton*, no stitch line or seam can be detected thanks to its unique construction. The padded lambskin leather gently springs to the touch in new shades of primrose, blossom and dew. Each flat purse and card case is made even more luxurious with contrasting lining.

Life's little luxuries are carefully considered in *Panama's* all-encompassing collection of versatile travel pieces and accessories. These include tote bags, wallets and writing folders, as well as technology cases, cufflink and jewellery boxes. With its iconic cross grain print and plethora of bold colours, Panama remains ever the whimsical. New pieces for Spring Summer include enamelled luggage tag key rings.

## HOME

Designed as a complement to a wider range of home accessories including picture frames, jewellery and watch boxes, *Grosvenor* introduces a range of desk accessories which highlight Smythson's rich heritage with exquisitely crafted pieces, including: a desk blotter, a new style of pivot trinket boxes, a penpot and letter rack in elegant hues of chalk, dove grey and black. These stunning office accoutrements are the perfect place to store desk sundries and keep workspaces in order.

In *Albany*, matt leather goatskin lends itself to a more relaxed collection of skilfully made home accessories. Jewellery cases are not necessarily restricted to dressing tables in this collection. Instead, they are ideal for globetrotting lifestyles. Large jewellery rolls, mini cufflink box, multiple cufflink box and portable jewellery trays in sumptuous shades of taupe and dawn blue have an understated edge and are lined in light grey coloured nubuck.

---

## MENS

### BUSINESS AND TRAVEL

From the office to the departure lounge, *Montagu* adds a modern twist to the look and feel of deluxe accessories and bags. Soft, malleable calf leather is the basis for holdalls, a slim and large version of briefcase and a functional folio. Dawn blue adds a vibrant hue in addition to a pop of colour contrast on cleverly designed interior pockets.

Impeccable craftsmanship and uncompromising attention to detail epitomise the *Grosvenor* collection season-after-season. The discerning businessman will undoubtedly relish the refillable organisers. Document cases and single and double briefcases are also designed to make light of hard work. Further more, classic lines and smooth black leather are designed to surpass fleeting trends and last a lifetime.

The iconic Smythson's *heritage lock* closure, which features on the *Grosvenor* men's briefcase, is expertly applied to a selection of writing folders and purses in the *Heritage Lock* collection. From the slim perfectly formed zip wallet, to the A4 and A5 zip folder and large zip pouch, each piece is offered in the distinctive tone of dawn blue.

Once again, *Burlington* brilliantly fuses function with a sleek aesthetic in a wide selection of soft deerskin on-the-go essentials. These include writing folders, briefcases, tote bags and backpacks along with 24 hour and 48 hour bags. Simple yet refined, this understated collection also boasts exquisitely crafted small leather goods; wallets, currency cases and coin purses. Each unique piece is updated for Spring Summer in muted tones of dove grey.

# COLLECTION NOTES

Design: Modern elegance for her, streamlined classics for him

**Material:** Supple and hardwearing leathers and suedes of the finest quality, exotic python, watersnake

**Usage:** luxury by day, refined elegance for evening

## COLOUR PALETTE

**New Colours:** Blossom, Clay, Dew, Night Blue, Paper White, Primrose

**Core Collection Colours:** Black, Brown, Dove Grey, Emerald Green, Navy, Nile Blue, Red, Taupe, Yellow

**Signature Colours:** Navy Blue, Nile Blue

## HERITAGE FEATURES

Exceptional craftsmanship, luxurious materials and attention to detail. Refined hardware and distinctive finishing, contrasting interiors, shagreen hardware.

**Signature Details:** Nile Blue stitch detail, cross stitching to base

## COLLECTION STRUCTURE

**Connoisseur Collection:** *1887, Albemarle, Atlas Travel, Brook, Compton, Eliot, Maddox* and *Montagu* collections. Made to the highest quality with the most exclusive materials, these pieces speak to the most discerning and demanding of customers.

**Understated Luxury:** *Berkeley, Dover, Envelope Embossed* collections are classic, yet contemporary favourites, designed for versatile work-to-weekend style. By paying homage to Smythson's remarkable history of exquisite craftsmanship, they appeal to those to whom a modern aesthetic and functionality carry equal importance.

**Sophisticated Business Essentials:** *The Burlington, Chameleon, Grosvenor, Hampstead* and *Heritage Lock* collections exude peerless luxury. Crafted from only the finest leather, these pieces are tailored to businessmen and women with an eye for subtle beauty.

**24/7:** *Mara* and *Panama* collections. Combining functionality with a modern aesthetic, these contain beautiful classic and timeless pieces. Designed to be remarkably versatile with bold solid colour and texture.