


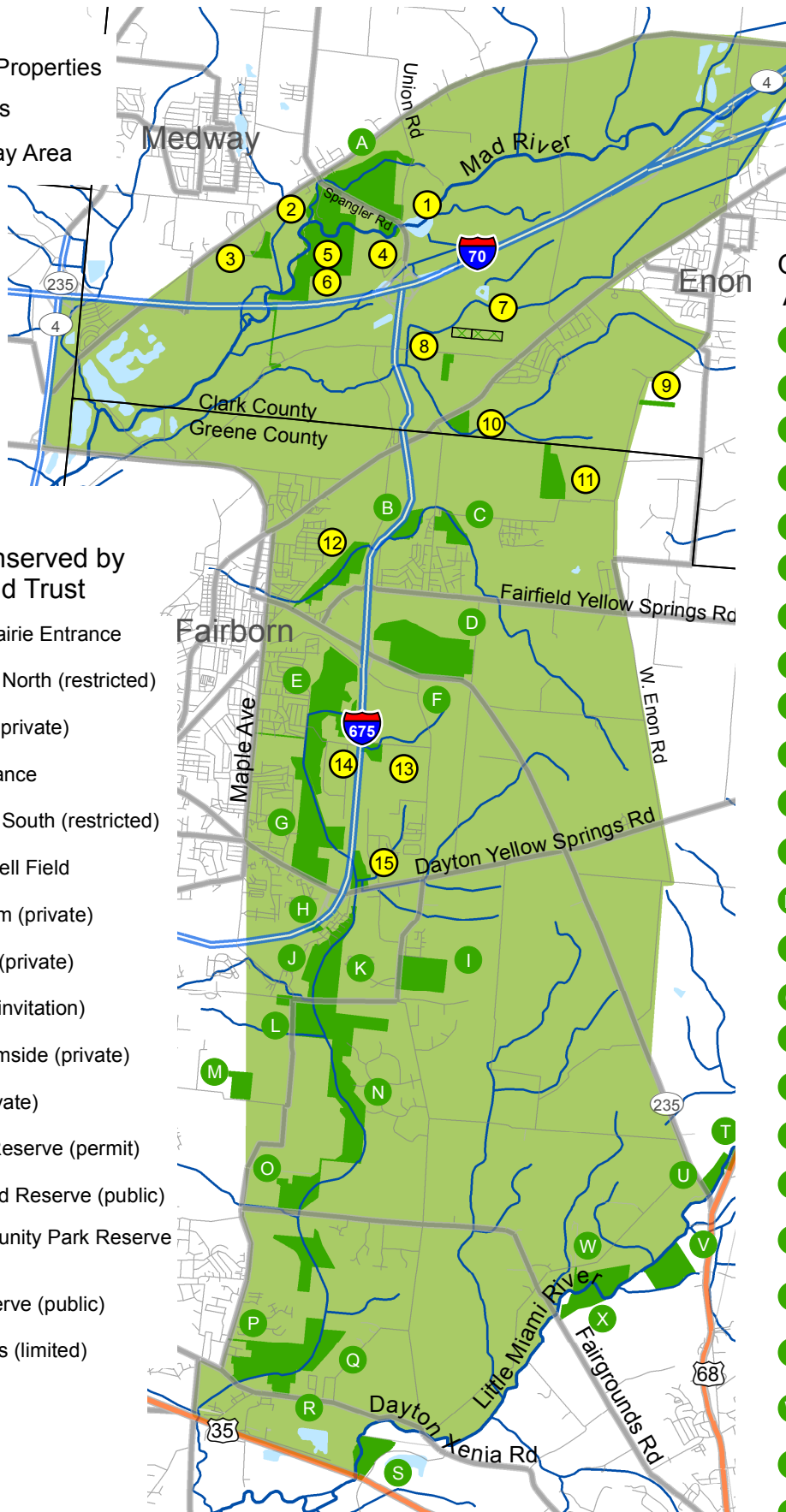
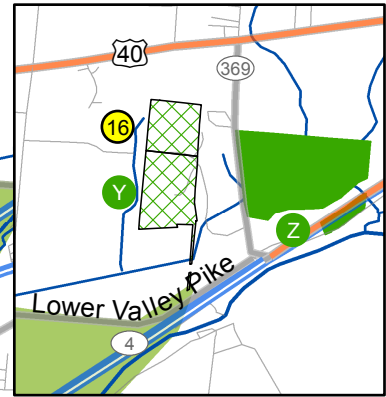


B-W Greenway

-  Wetlands & Properties
-  Pending Sites
-  BW Greenway Area



Properties Conserved by BWGC Land Trust

- 1** Leadingham Prairie Entrance
- 2** Buckeye Grove North (restricted)
- 3** Lokai Property (private)
- 4** Mad River Entrance
- 5** Buckeye Grove South (restricted)
- 6** Clark County Well Field
- 7** Spring Run Farm (private)
- 8** Jurick Property (private)
- 9** Anderson Fen (invitation)
- 10** Mud Run Streamside (private)
- 11** Heider Fen (private)
- 12** Hebble Creek Reserve (permit)
- 13** Garland Wetland Reserve (public)
- 14** Fairborn Community Park Reserve (public)
- 15** Valle View Reserve (public)
- 16** Peckuwe Woods (limited)

Other Conserved Natural Areas in B-W Greenway

- A** Estelle Wenrick Wetland (public)
- B** Fairborn Detention Area
- C** Cold Stream Reserve
- D** Pearl's Fen (restricted) Origin of Beaver Creek¹
- E** Cemex Reserve (public)
- F** Oakes Quarry Park (public)¹
- G** Fairborn Community Park (public)
- H** Valle Green Park (public)
- I** Hobson Park (public)
- J** Fairborn Marsh West (restricted)
- K** Fairborn Marsh East (public)
- L** Koogler Wetland (public) and Prairie Reserve
- M** Russ Nature Center (public)
- N** Beaver Creek Wetland and Wildlife Area North (public)
- O** Siebenthaler Fen (public)
- P** Rotary Park (public)
- Q** Beaver Creek Wetland Nature Preserve (public)
- R** Phillips Park (public)
- S** Glenn Thompson Reserve (public)
- T** LMC US68 Preserve (restricted)
- U** LMC SR235 Preserve (restricted)
- V** LMC Tecumseh Preserve (restricted)
- W** LMC Robinow Preserve (restricted)
- X** ODNR Fairgrounds Road Preserve (restricted)
- Y** Peckuwe Battlesite
- Z** George Rogers Clark Park (public)

Notes 1 - B-W Greenway helped with acquisition.