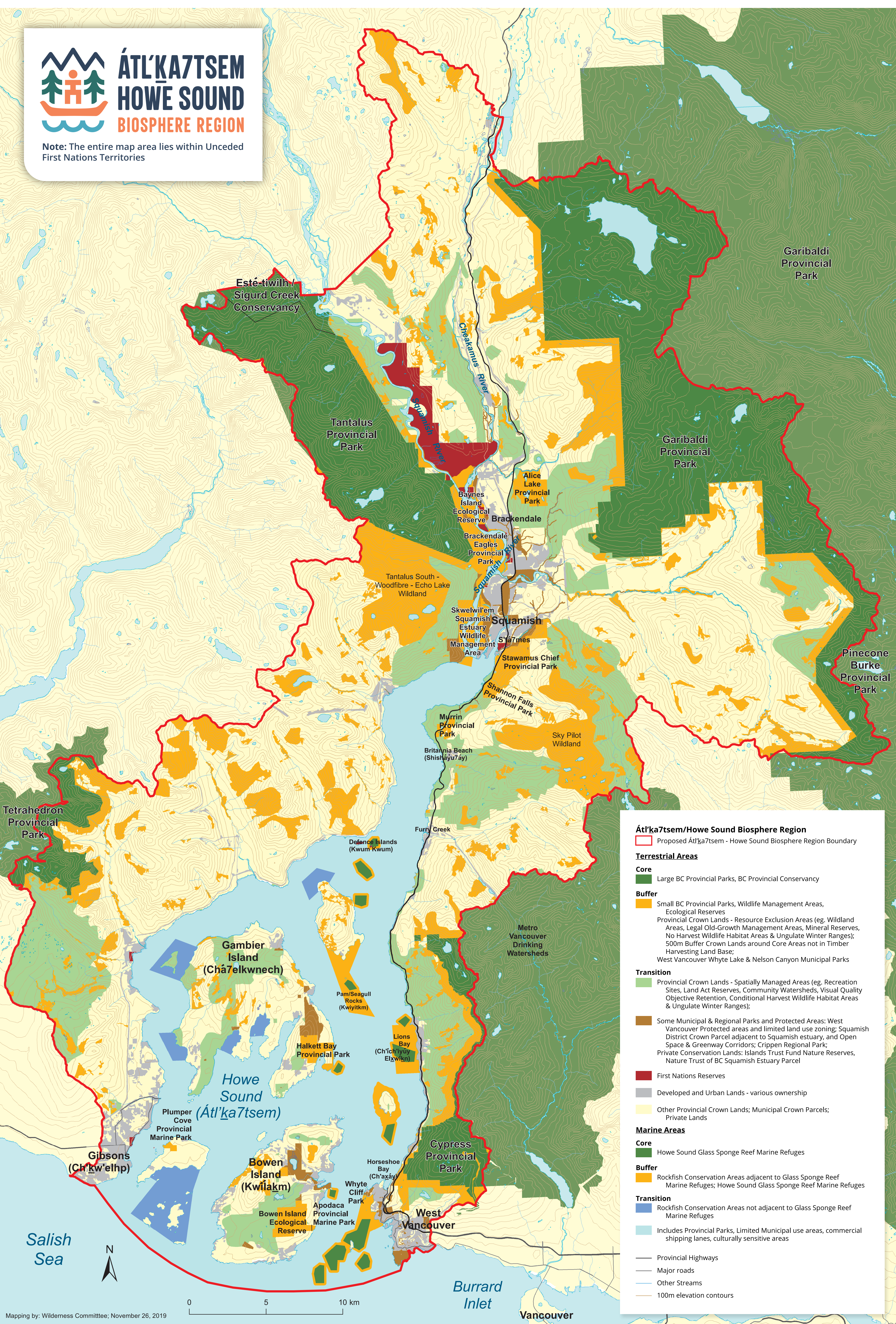




ÁTL'KA7TSEM HOWE SOUND BIOSPHERE REGION

Note: The entire map area lies within Unceded First Nations Territories



Átl'ka7tsem/Howe Sound Biosphere Region

- Proposed Átl'ka7tsem - Howe Sound Biosphere Region Boundary

Terrestrial Areas

Core

- Large BC Provincial Parks, BC Provincial Conservancy

Buffer

- Small BC Provincial Parks, Wildlife Management Areas, Ecological Reserves
- Provincial Crown Lands - Resource Exclusion Areas (eg. Wildland Areas, Legal Old-Growth Management Areas, Mineral Reserves, No Harvest Wildlife Habitat Areas & Ungulate Winter Ranges); 500m Buffer Crown Lands around Core Areas not in Timber Harvesting Land Base;
- West Vancouver Whyte Lake & Nelson Canyon Municipal Parks

Transition

- Provincial Crown Lands - Spatially Managed Areas (eg. Recreation Sites, Land Act Reserves, Community Watersheds, Visual Quality Objective Retention, Conditional Harvest Wildlife Habitat Areas & Ungulate Winter Ranges);
- Some Municipal & Regional Parks and Protected Areas: West Vancouver Protected areas and limited land use zoning; Squamish District Crown Parcel adjacent to Squamish estuary, and Open Space & Greenway Corridors; Crippen Regional Park; Private Conservation Lands: Islands Trust Fund Nature Reserves, Nature Trust of BC Squamish Estuary Parcel
- First Nations Reserves
- Developed and Urban Lands - various ownership
- Other Provincial Crown Lands; Municipal Crown Parcels; Private Lands

Marine Areas

Core

- Howe Sound Glass Sponge Reef Marine Refuges

Buffer

- Rockfish Conservation Areas adjacent to Glass Sponge Reef Marine Refuges; Howe Sound Glass Sponge Reef Marine Refuges

Transition

- Rockfish Conservation Areas not adjacent to Glass Sponge Reef Marine Refuges
- Includes Provincial Parks, Limited Municipal use areas, commercial shipping lanes, culturally sensitive areas

— Provincial Highways
— Major roads
— Other Streams
— 100m elevation contours

