



— BUREAU OF —  
RECLAMATION



# Friant-Kern Canal Middle Reach Capacity Correction Project

Draft Environmental Impact Statement/Environmental  
Impact Report

Public Meeting

June 8, 2020

# Agenda

- Introductions
- Webinar Overview
- Safety Moment
- Purpose of Meeting
- Project Location and Background
- Purpose and Need and Project Objectives
- Project Alternatives
- Environmental Review Process
- Receipt of Public Comments



# Introductions

- **Bureau of Reclamation (NEPA Lead Agency)**

Rain Emerson – Supervisory Natural Resources Specialist

Josh Newcom – Public Affairs Specialist, San Joaquin River Restoration

Adam Nickels – Deputy Program Manager, San Joaquin River Restoration

- **Friant Water Authority (CEQA Lead Agency)**

Johnny Amaral – Chief of External Affairs

Doug DeFlicht – Chief Operating Officer

- **Stantec Project Team**

Heather Waldrop – Lead Environmental Planner

Craig Moyle – Public Affairs Specialist



# How to Provide a Verbal Comment

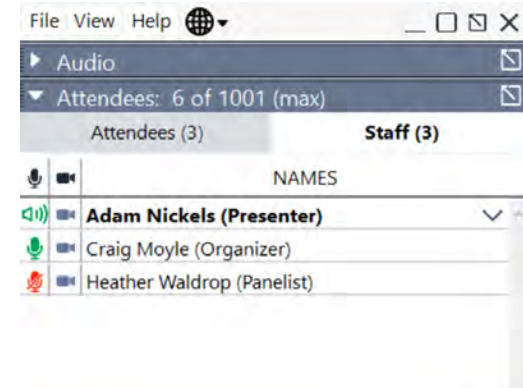
To provide a verbal comment or provide a written comment to be heard during today's meeting:

## Webinar Participants

- ✓ Open the "Questions" tab in your GoToWebinar dashboard.
- ✓ Insert your request to comment or written comment and click the "Send" button.
- ✓ You can do this at any time during today's meeting.

## Conference Call-Only Participants

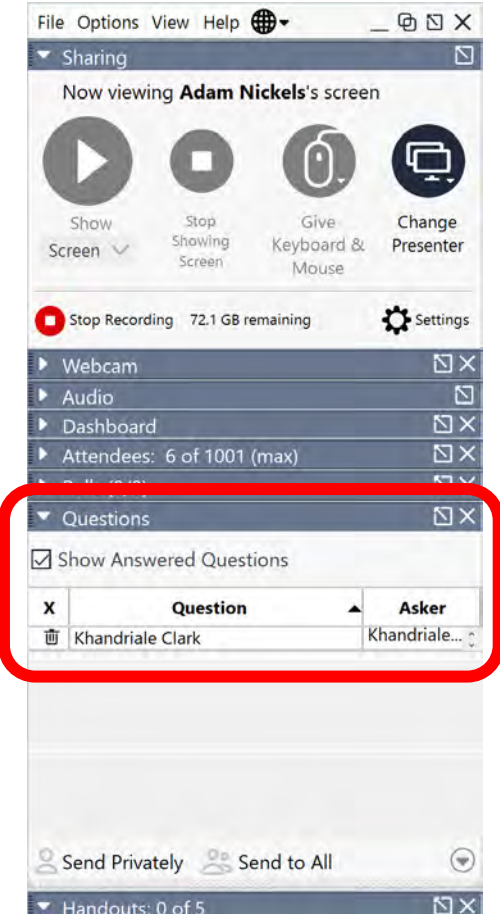
- ✓ Send your comment by text message to: 916-642-6383. Please include your full name.



# How Will the Public Comment Process Work?

When the comment period starts:

- Comments will be taken in the order they were received.
- When it is your turn, the moderator will call your name and open your microphone.
- Please state your company or organization name, if applicable.
- We request you limit your comments to 3 minutes or less.
- Staff may respond to some comments for clarification purposes.

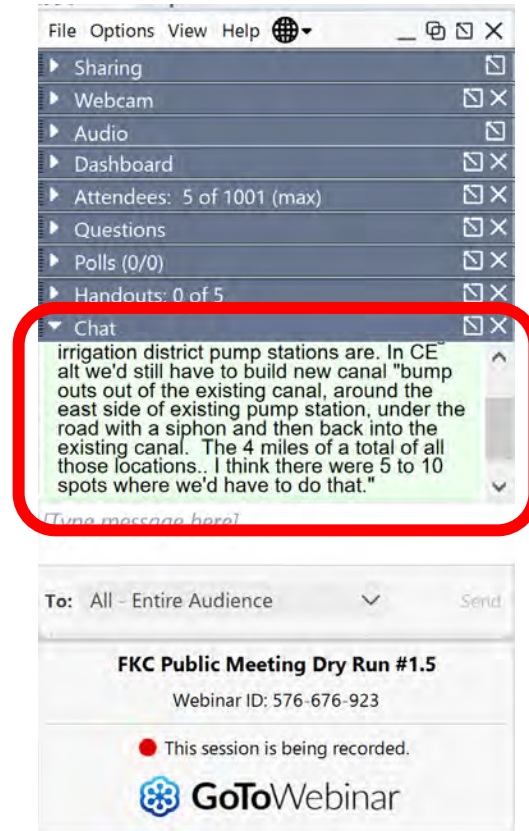


# Have a Clarifying Question?

Project presentation:

- Select the “Chat” room tab on GoToWebinar dashboard.
- Insert your question and click the “Send” button.
- Questions can also be sent by text to 916-642-6383.

All questions in the Chat room and text message will be addressed after the presentation.



# Safety Moment

## Camp trip tips:

1. Know before you go.
2. Stay up-to-date with the weather.
3. Pack and Store Food Safely.
4. Practice Campfire Safety.
5. Use Insect Protection.
6. Be Aware of Allergies.
7. Protect Your Skin from the Sun.
8. Stay Hydrated.





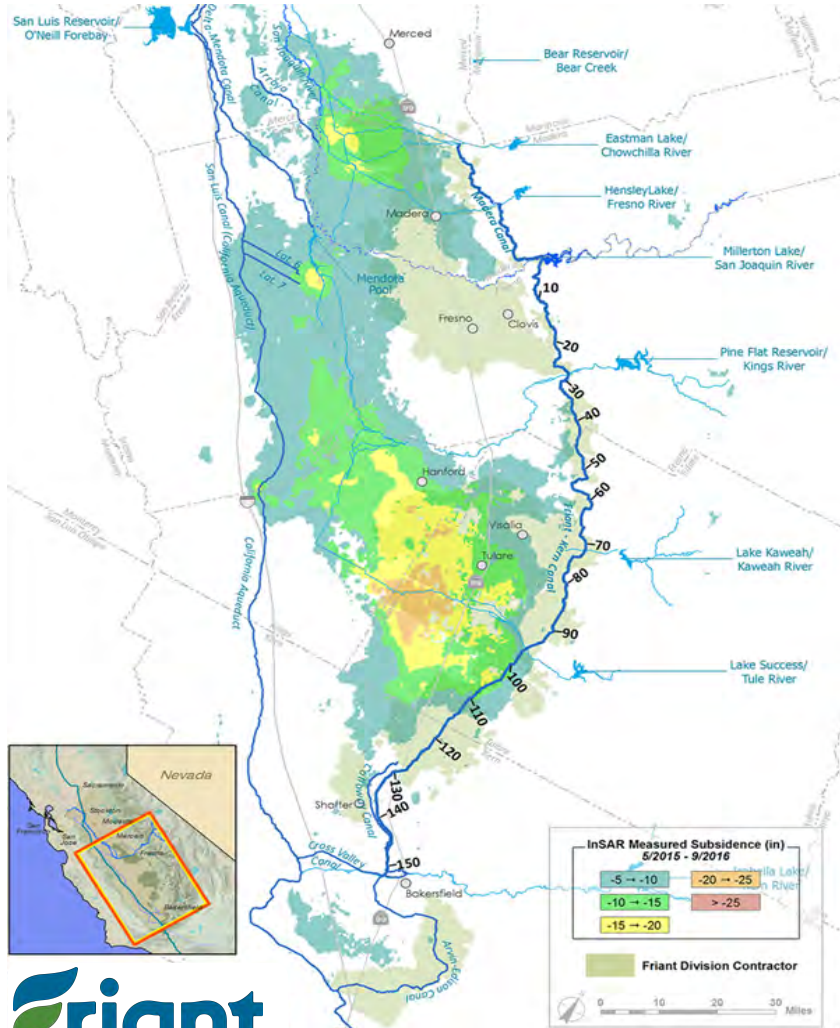
# Purpose of the Meeting

1. Provide project information.
2. Accept comments on the Draft Environmental Impact Statement/Report (EIS/R).





# Regional Land Subsidence



- Groundwater pumping increased during recent drought.
- Subsidence occurred at a rate of about 1 inch per month during 2015 - 2016.
- Over 50% capacity reductions within and below the Middle Reach of the FKC.

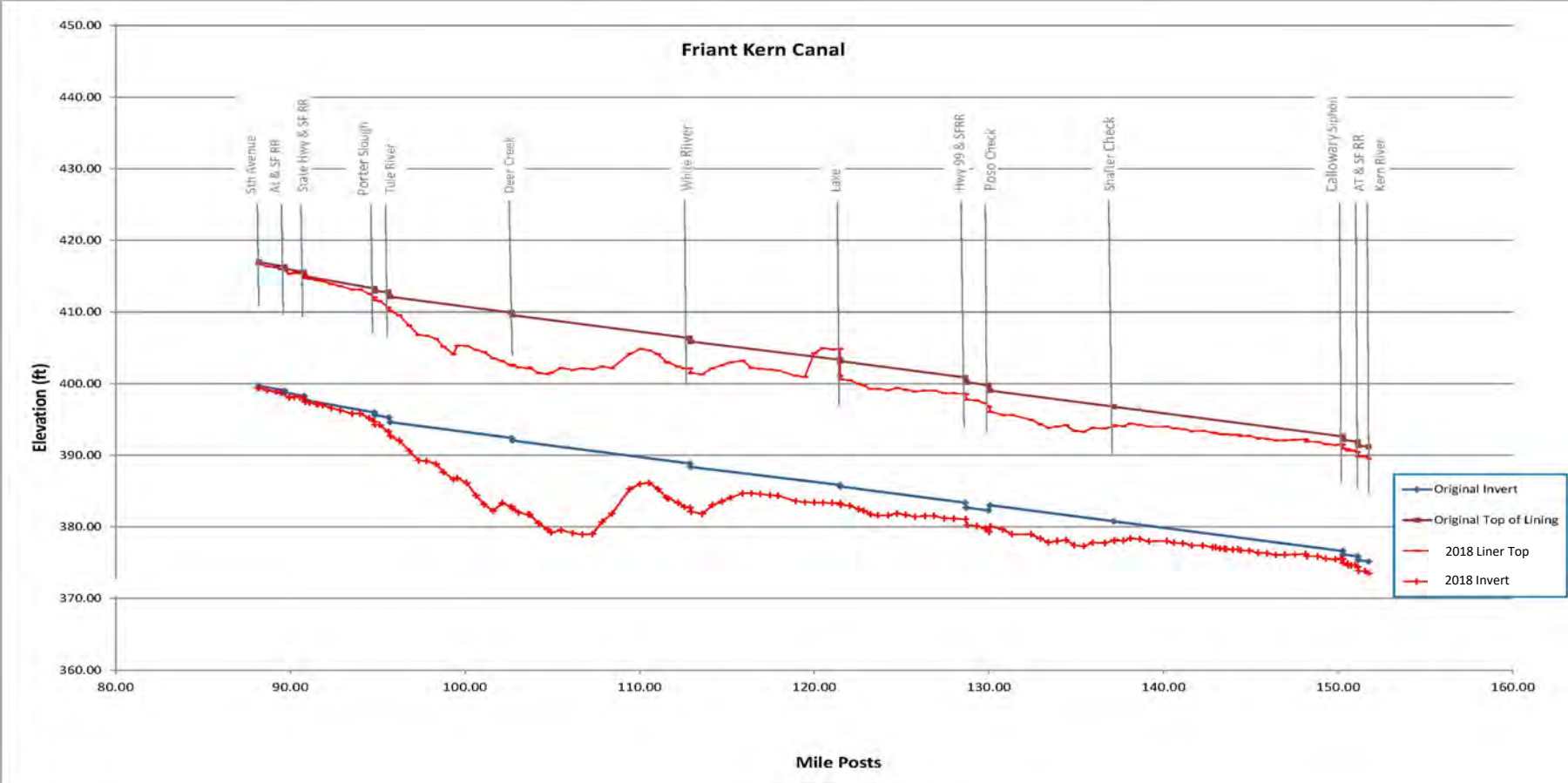


# Friant-Kern Canal Middle Reach

- 33-mile canal segment in Tulare and Kern Counties
- 5<sup>th</sup> Avenue to Lake Woollomes (MP 88.2-121.5)
- Passes by community of Strathmore and City of Porterville



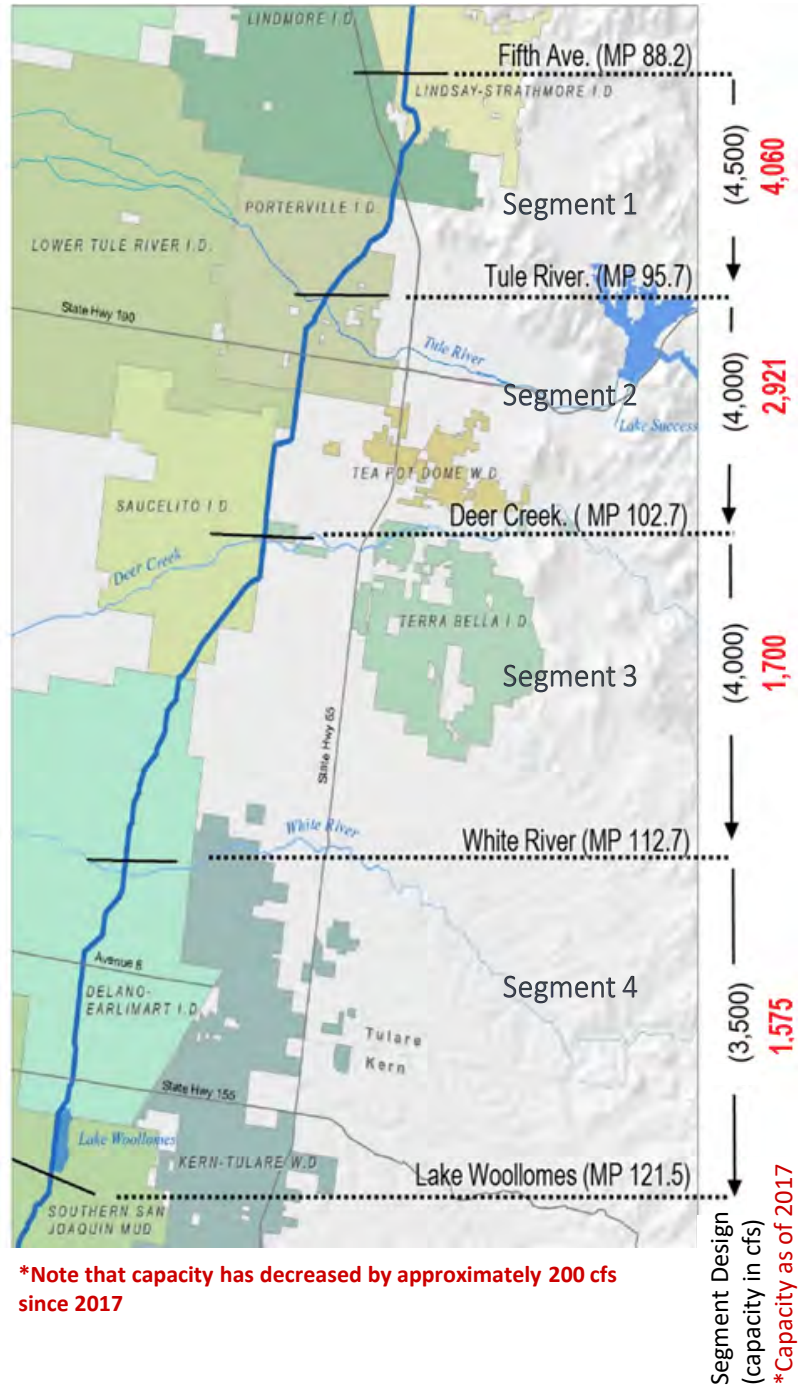
# Recent Conditions v. Original Construction





# Current Capacity

- Facility has more than 50% capacity loss
  - Original Design
  - **Current Capacity**



\*Note that capacity has decreased by approximately 200 cfs since 2017



# Purpose and Need (NEPA)

- The purpose is to restore the conveyance capacity of the FKC Middle Reach to such capacity as previously designed and constructed by Reclamation.
- The need is to increase the storage capacity in Millerton Lake through improved operations at Friant Dam.



# Project Objectives (CEQA)

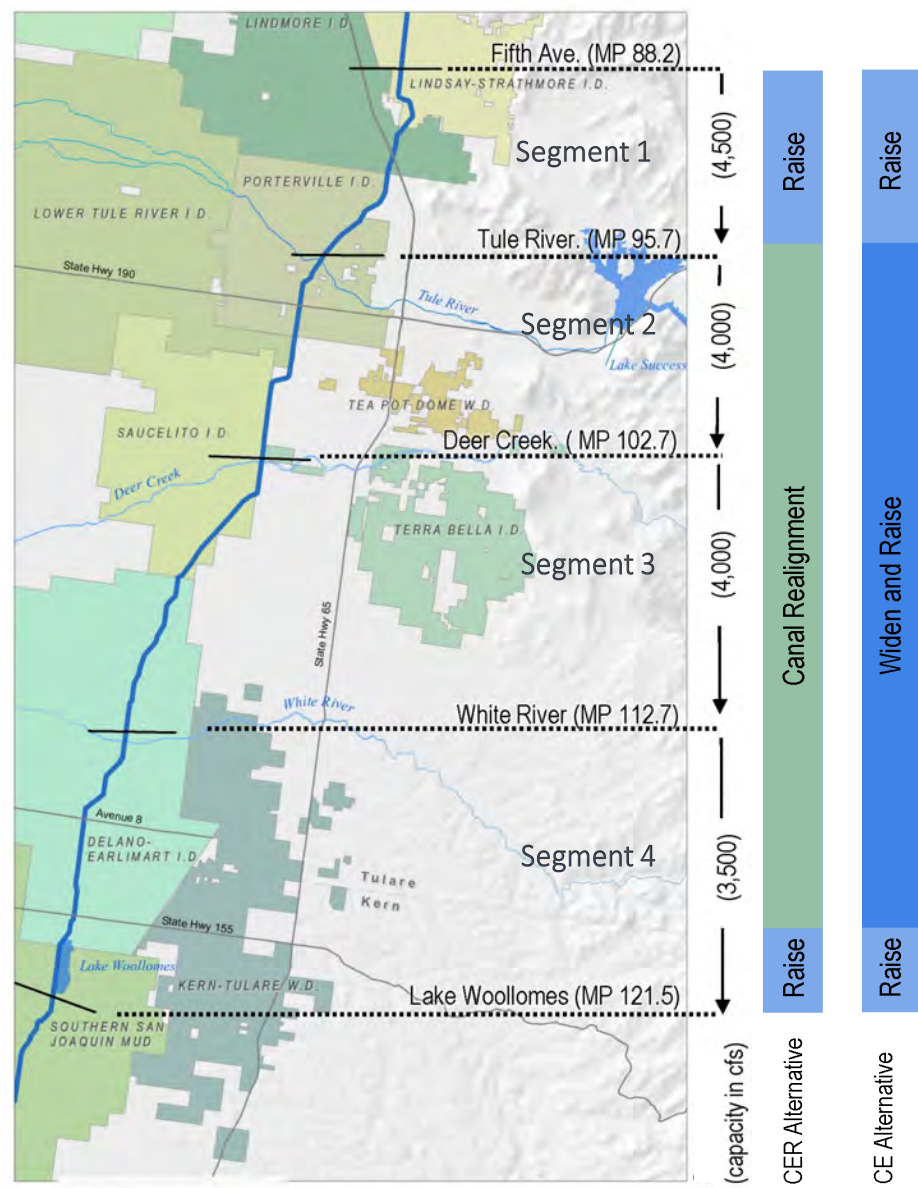
- Restore capacity to original designed and constructed levels that meet the water supply delivery requirements of the CVP contracts of long-term contractors;
- Restore capacity to convey water for the short-term conveyance of flood flows or non-CVP project water as well as provide potential surface water supplies for other users through exchanges and transfers;
- Facilitate accommodation of potential future reductions in conveyance capacity caused by anticipated continued subsidence following Project implementation by designing and maintaining the restored capacity for a service life of at least 50 years; and
- Restore capacity to the maximum extent using the original gravity conveyance design that avoids reliance on additional mechanical facilities and increased energy demands.



# Project Alternatives

- No Project/No Action
- Canal Enlargement and Realignment (CER)\*
- Canal Enlargement (CE)

\*For CEQA purposes Friant has identified the CER as the "Proposed Project." Reclamation has not identified a Preferred Alternative.





# No Project/No Action

Four reasonably foreseeable actions that could occur in the year 2070 include:

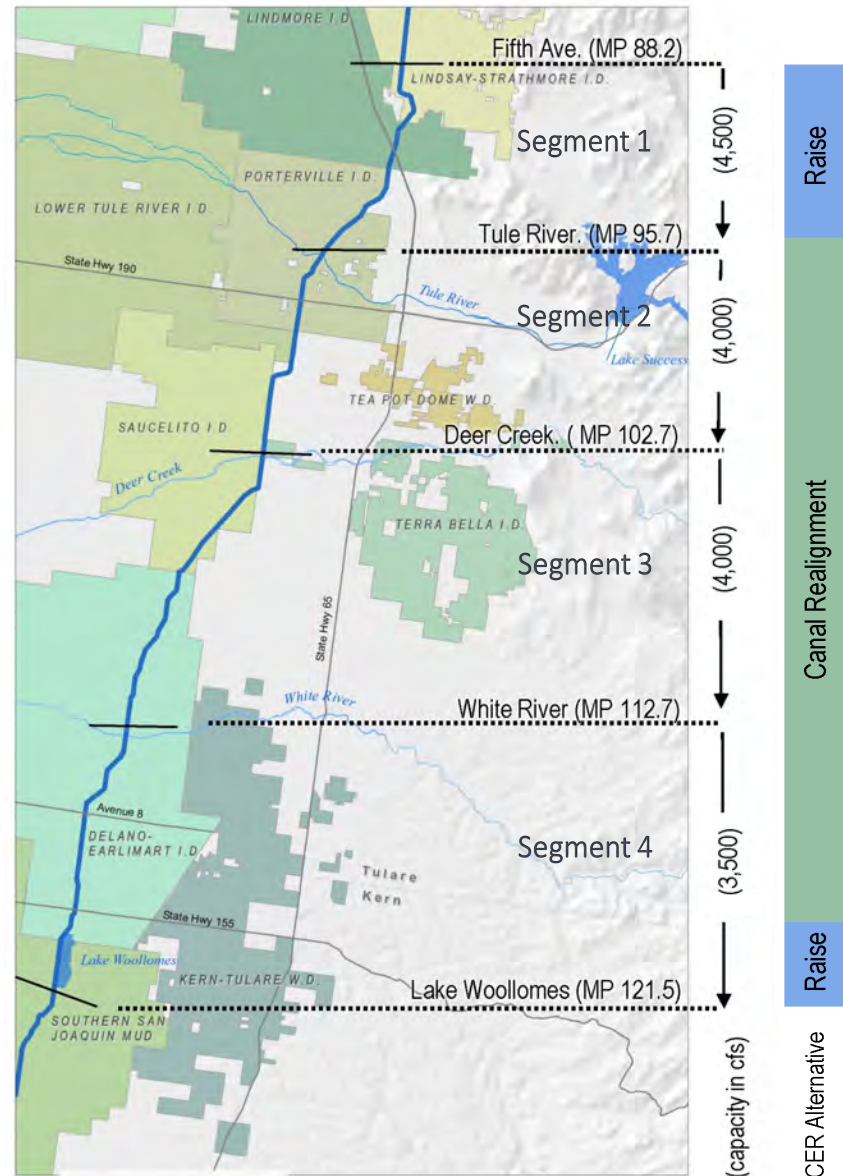
- Annual Restoration Flow volume would increase through 2025;
- Projected additional subsidence will further reduce the FKC Middle Reach capacity;
- Full compliance with the state's Sustainable Groundwater Management Act by 2040;
- Friant Contractors would attempt to minimize water delivery impacts to avoid spills at Millerton Lake.



# Canal Enlargement and Realignment (CER)

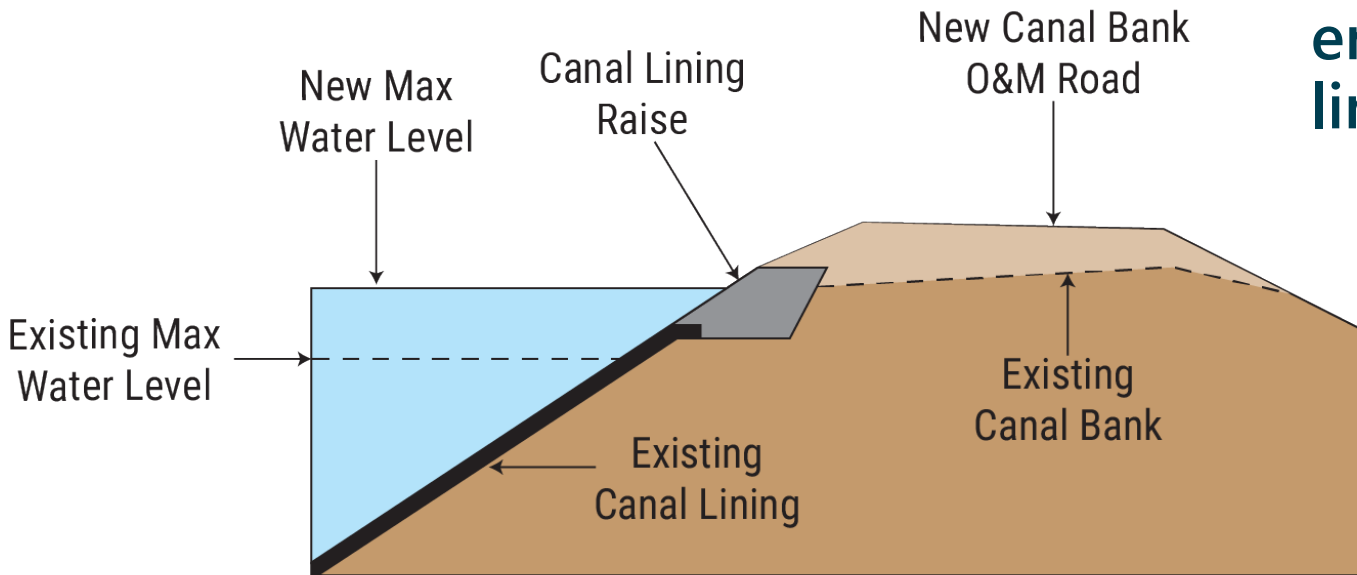
## Major components:

- Raise ~ 13 miles of the FKC
- Realign ~ 20 miles of canal, located east of existing FKC

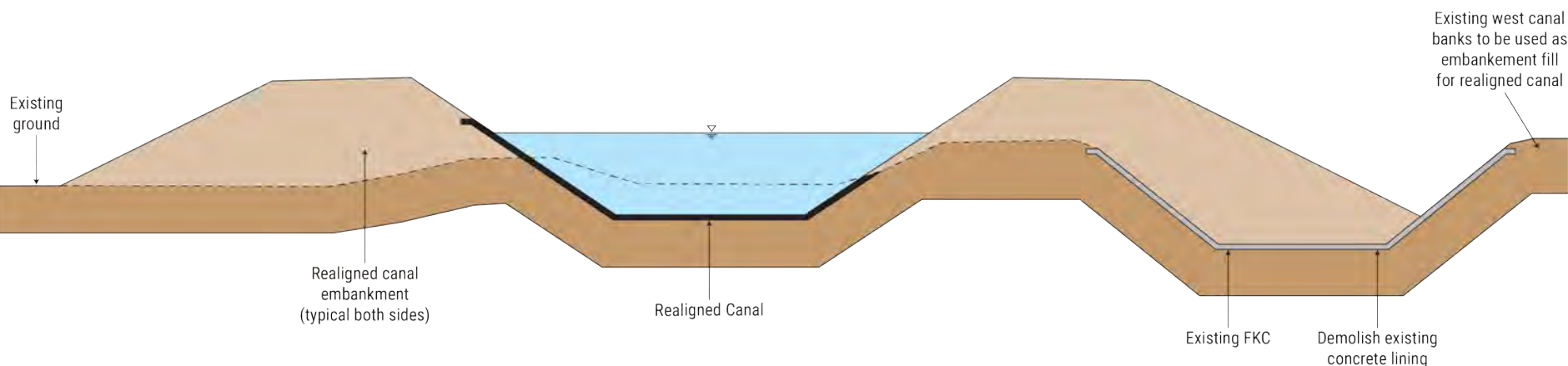


# CER Alternative - Canal Raise

Segments 1 & 4  
would be enlarged  
with a canal  
embankment and  
lining raise.



# CER Alternative - Realigned Canal



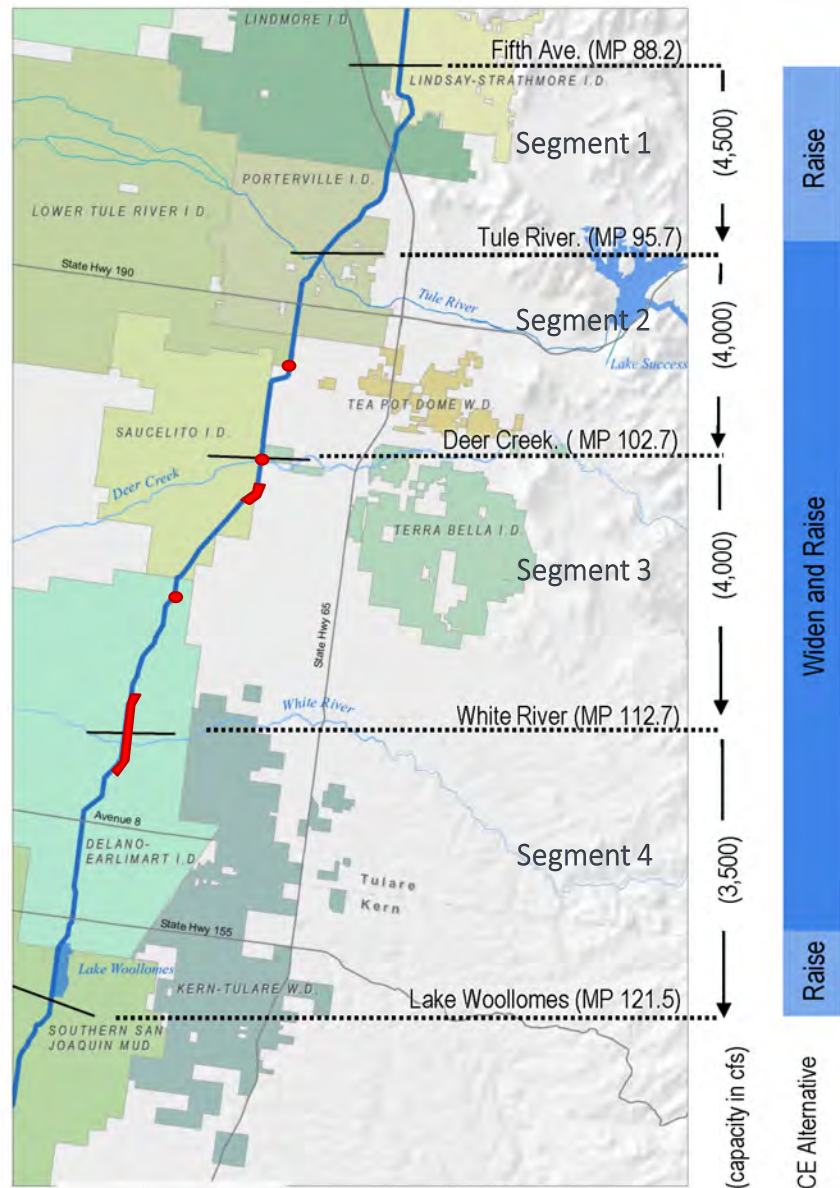
Starting at Ave. 152 (south of Tule River), new canal alignment would extend south approximately 20 miles.



# Canal Enlargement Alternative (CE)

## Major components:

- Raise ~13 miles of FKC.
- Widen and raise ~ 20 miles of FKC.
- Install ~ 4 total miles of bypass canal segments east of the FKC to accommodate pumped turnouts and road crossings.

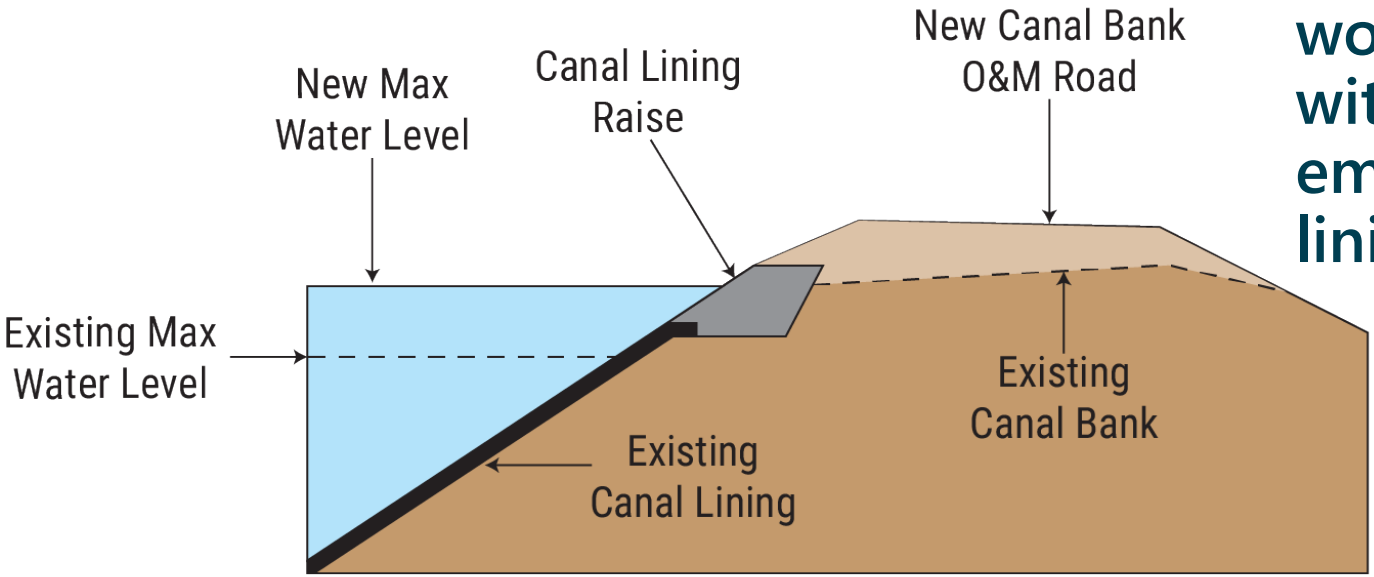


Approximate locations of bypass canal segments shown in red.

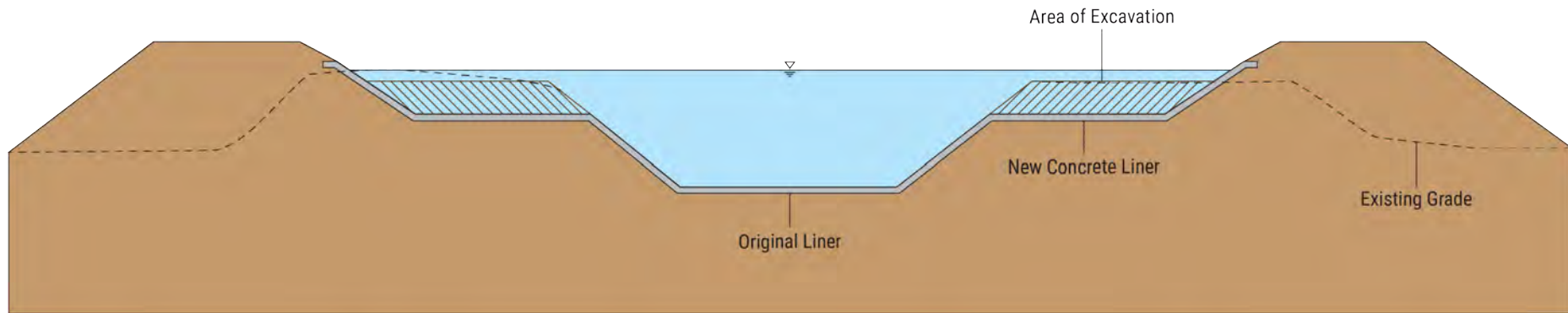


# CE Alternative - Canal Raise

Segments 1 & 4 would be enlarged with a canal embankment and lining raise.



# CE Alternative - Canal Widening and Raise



- 28-foot (max) bench cut into the existing grade for slope stability and flow capacity.
- Raise embankment up to 15 feet.





# Features Common to Both Alternatives

Modification or replacement of features within the 33-mile Action area:

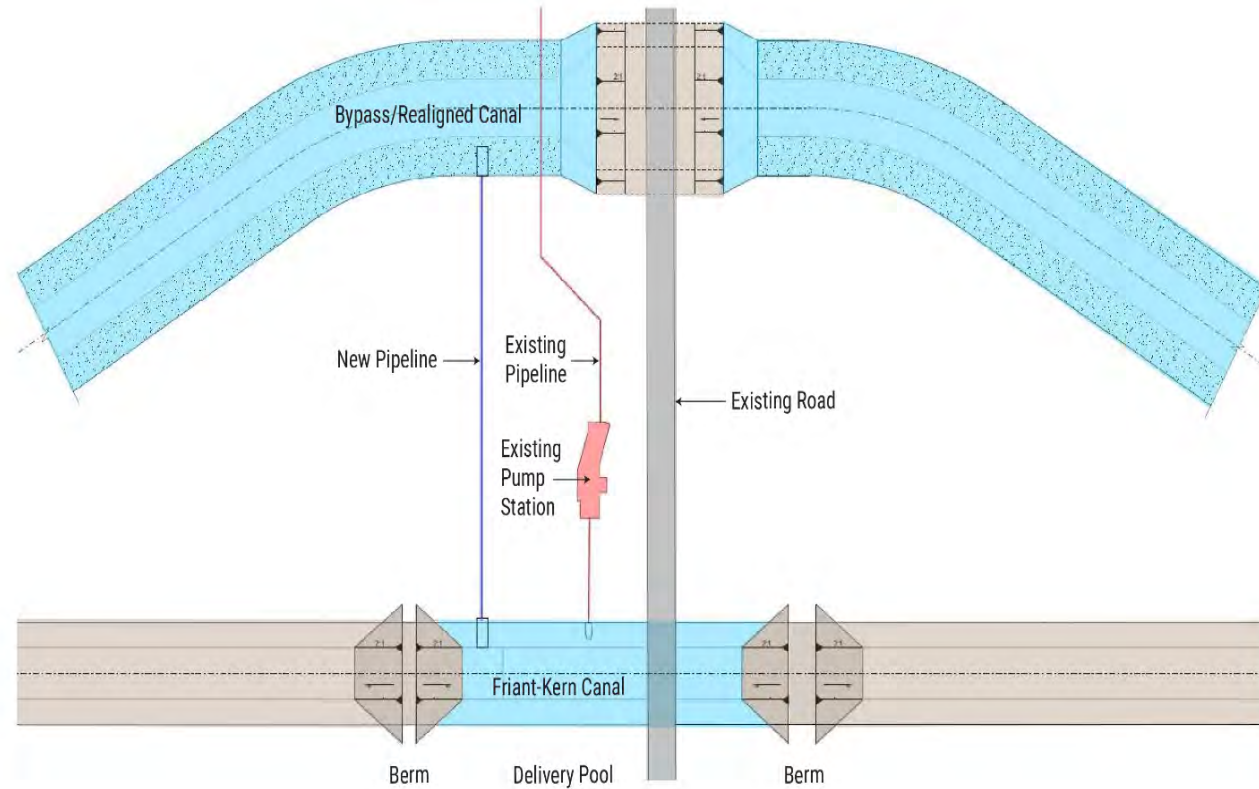
- Canal Raise
- Turnouts
- Road crossings
- Check structures, wasteways, and siphons at Deer Creek and White River
- Utilities
- Private land acquisition (new right of way)
- Borrow material
- Environmental commitments/mitigation measures



# Turnouts

Four designs depending on location;

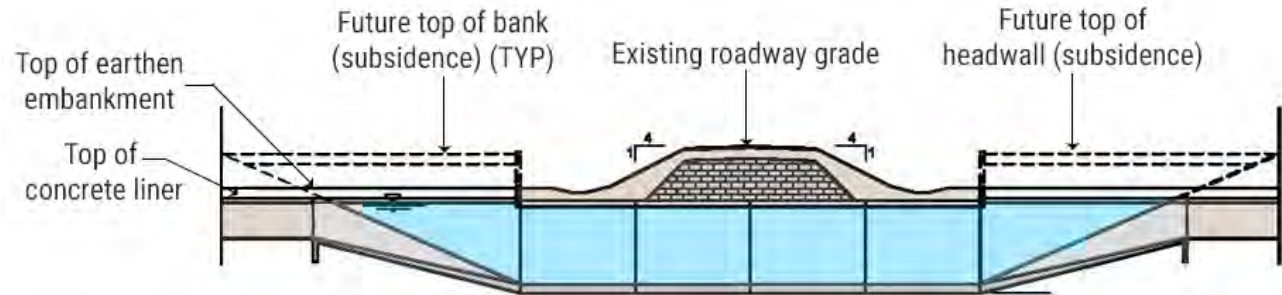
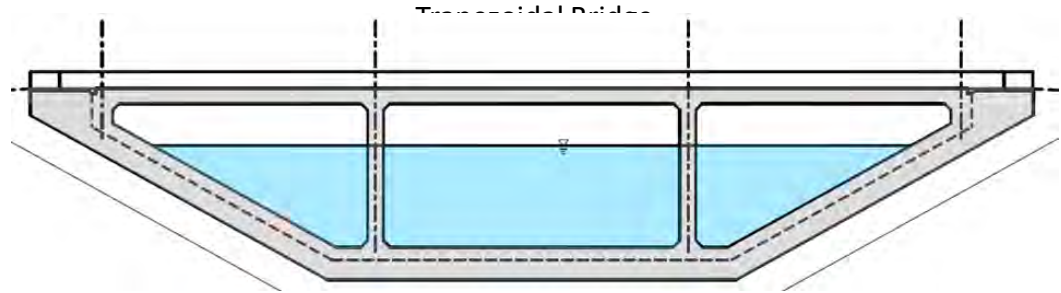
1. No modifications
2. New delivery pool turnout
3. New turnout
4. Deck raise



# Road Crossings

Three designs depending on location;

1. Leave in place
2. New trapezoidal bridge\*
3. Replace with concrete box siphon

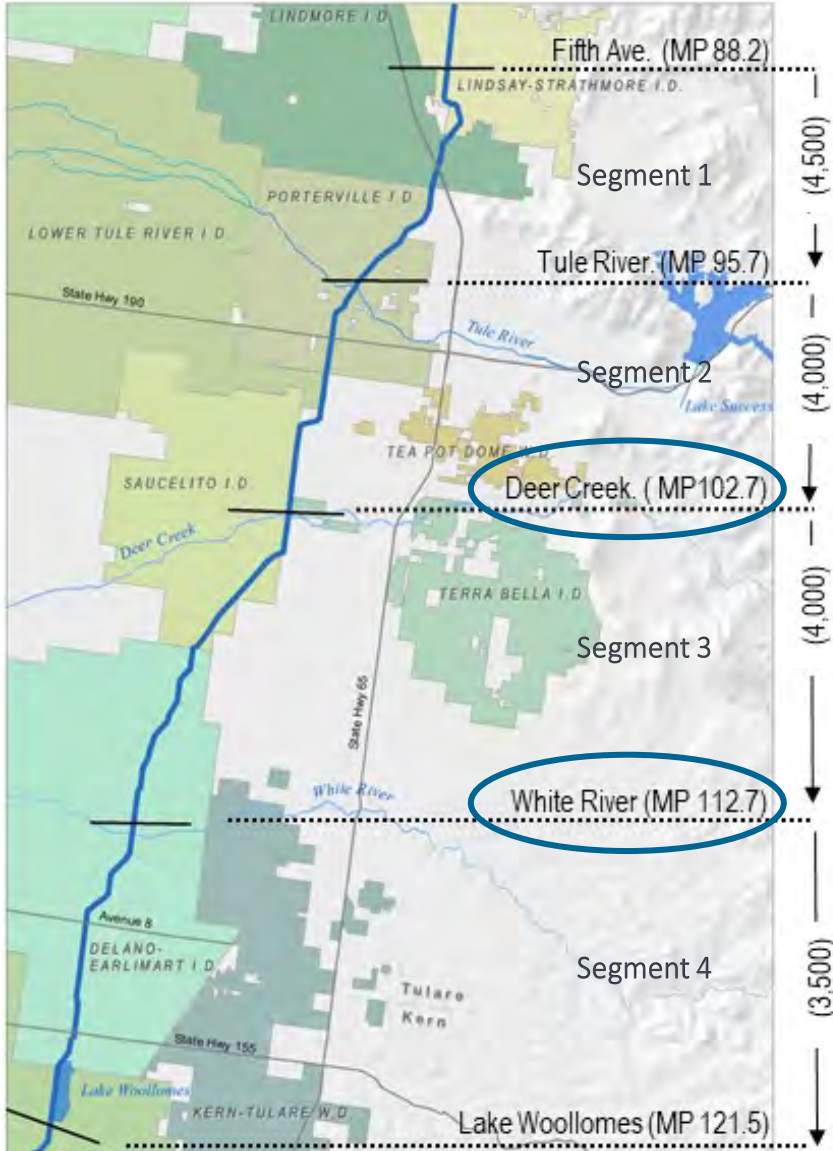


Concrete Box Siphon

\*only applicable to CE Alternative



# Check Structures

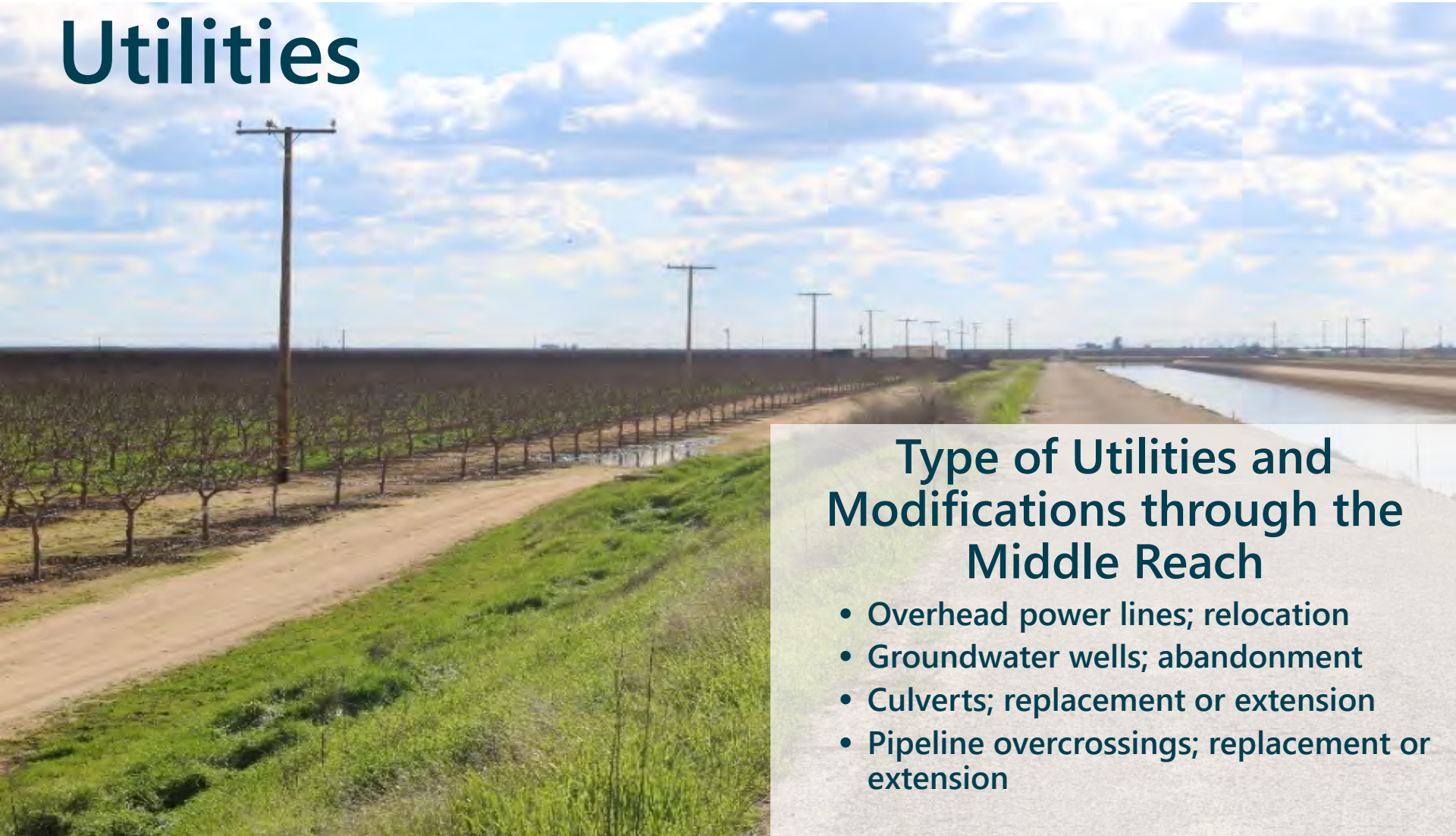


5 check structures in Middle Reach – 2 require replacement.





# Utilities

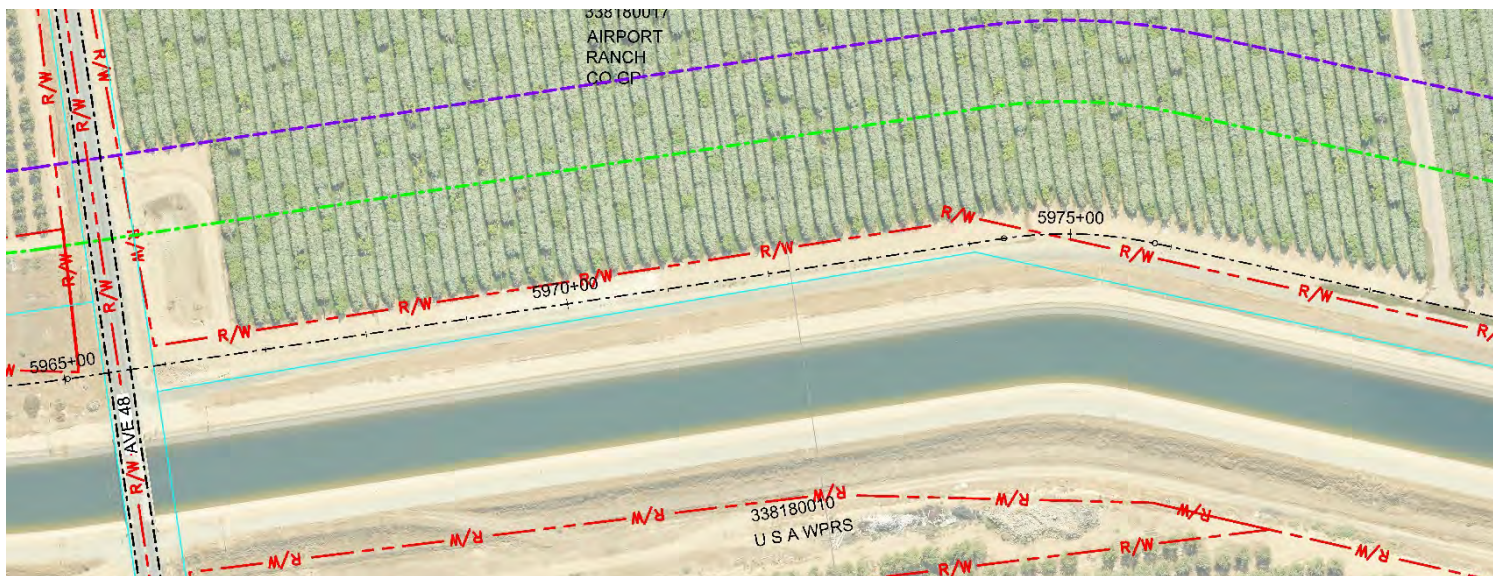


## Type of Utilities and Modifications through the Middle Reach

- Overhead power lines; relocation
- Groundwater wells; abandonment
- Culverts; replacement or extension
- Pipeline overcrossings; replacement or extension



# Private Land Acquisition



Land acquisition under the alternatives would range between approximately 144 acres (CE Alternative) to 510 acres (CER Alternative).

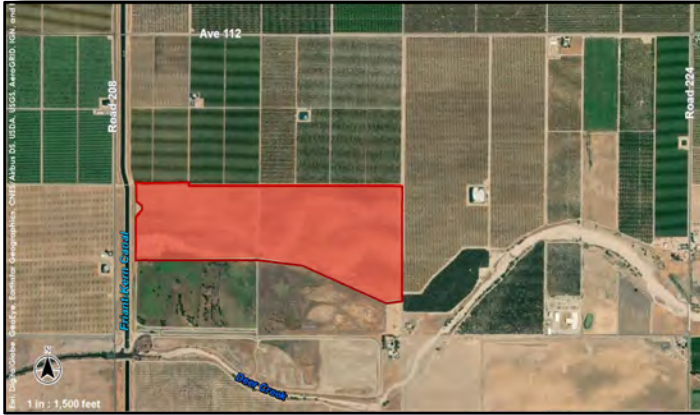




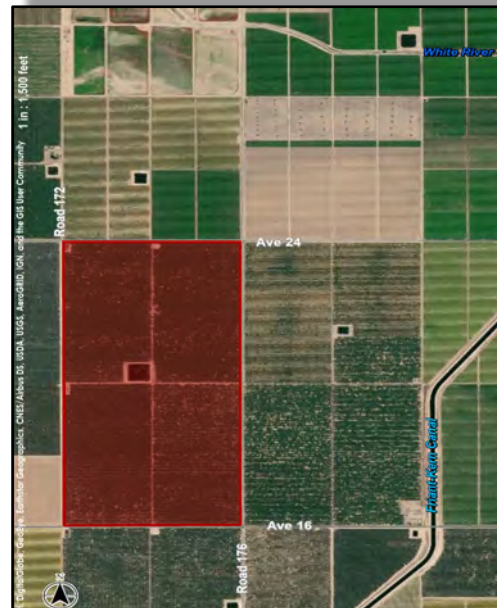
# Borrow

Borrow material required to construct each alternative; three potential borrow locations have been identified.

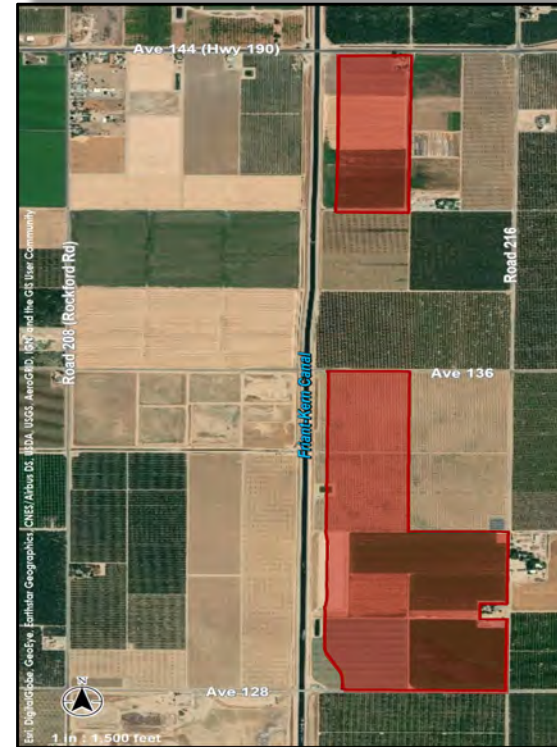
- CER: 2.5 million cubic yards,
- CE: 6 million cubic yards



Borrow site located north of Deer Creek



Borrow site located near White River



Borrow sites located north of Avenue 128





# Environmental Commitments/ Mitigation Measures

Environmental Commitments and/or Mitigation Measures have been proposed for the following resources:

- Air Quality
- Biological Resources
- Cultural Resources
- Geology and Soils
- Hazards and Hazardous Materials
- Land Use and Planning and Agricultural Resources
- Noise
- Transportation
- Utilities and Service Systems and Energy



# Environmental Review Process

- An Environmental Assessment/Initial Study (EA/IS) was prepared, and is available for review:
  - <https://friantwater.org/projects>
  - [https://www.usbr.gov/mp/nepa/nepa\\_project\\_details.php?Project\\_ID=41341](https://www.usbr.gov/mp/nepa/nepa_project_details.php?Project_ID=41341).
- The following resources were eliminated from detailed review in the Draft EIS/R – Aesthetics, Mineral Resources, Population and Housing, Public Services, Recreation, Environmental Justice and Socioeconomics.
- Reclamation and FWA prepared a joint Draft EIS/R.



# Resources Analyzed in the Draft EIS/R

- Air Quality
- Biological Resources
- Cultural\* and Tribal Cultural Resources
- Geology and Soils
- Greenhouse Gases
- Hazards and Hazardous Materials and Wildfires
- Hydrology and Water Quality
- Land Use\* and Planning and Agricultural Resources
- Noise
- Transportation\*
- Utilities and Service Systems and Energy

\*Determined to have significant and unavoidable impacts

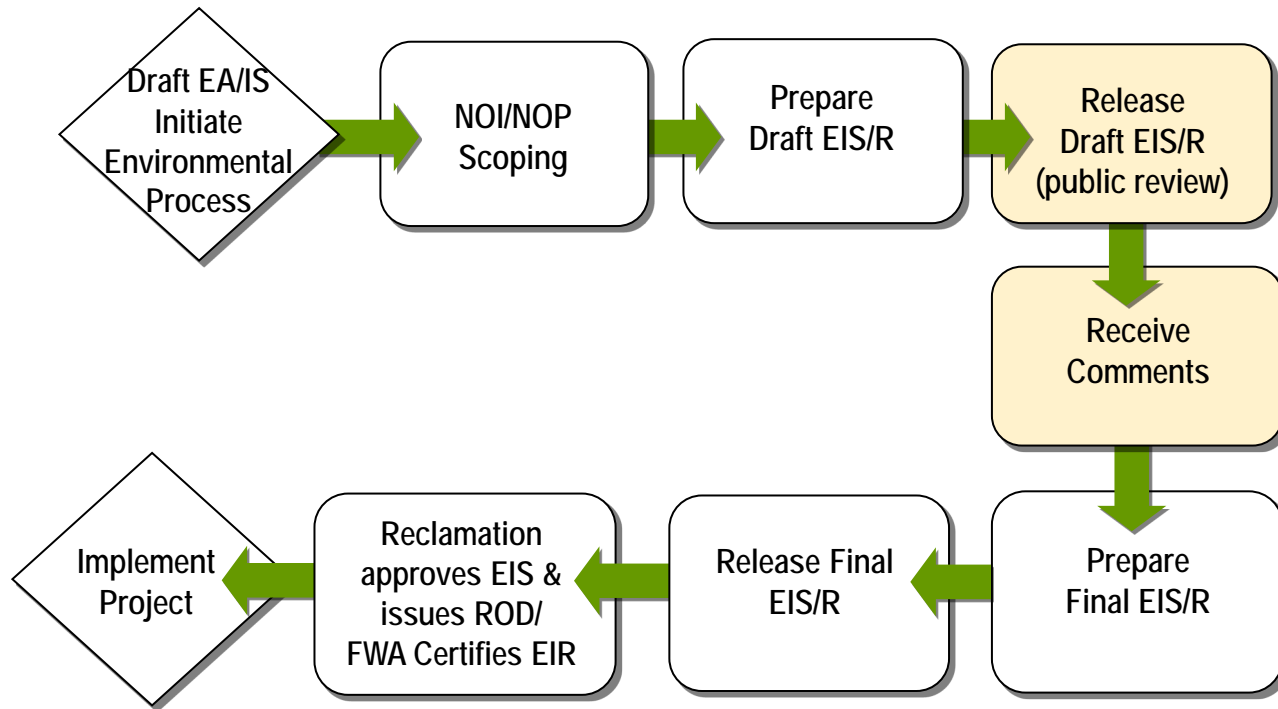


# Draft EIS/EIR Conclusions

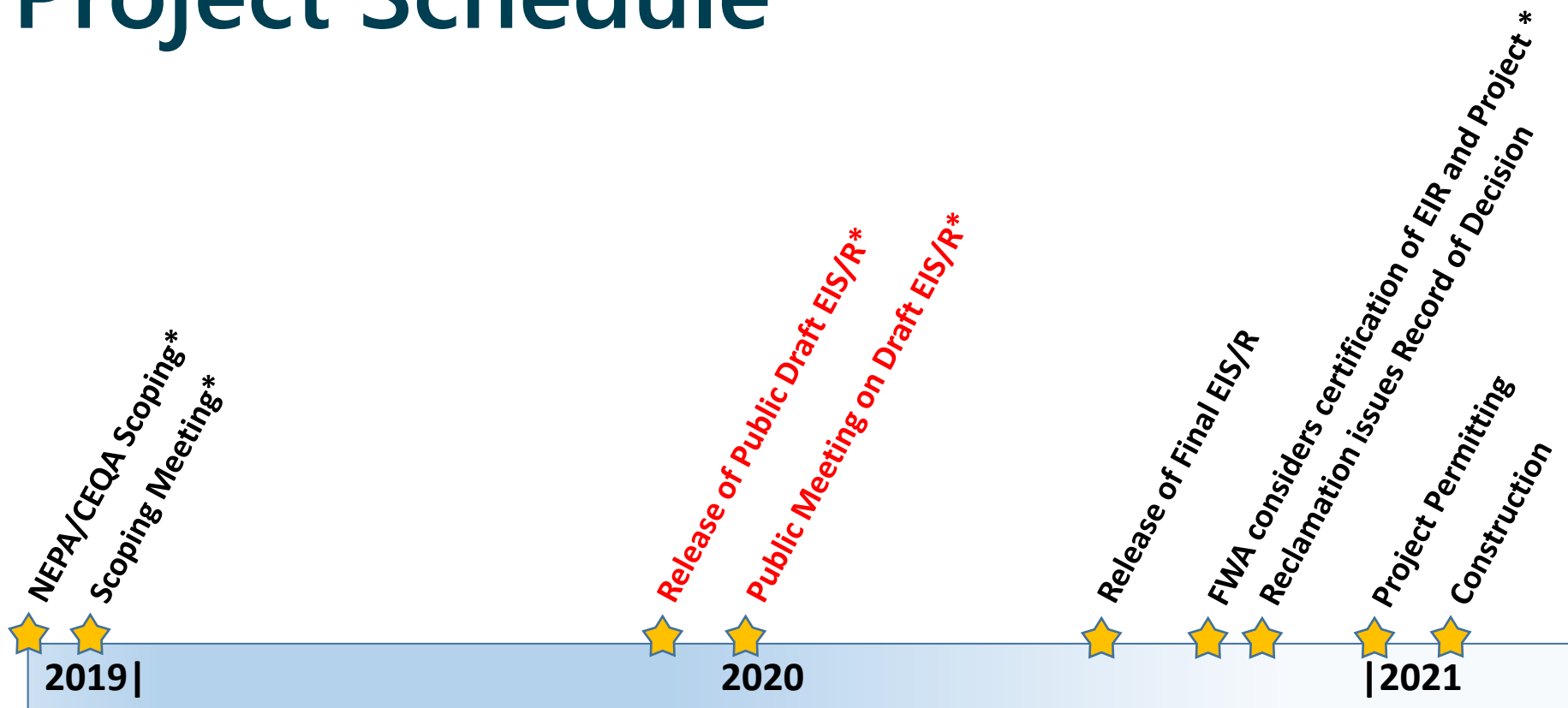
- The No Action Alternative would result in significant impacts:
  - Air Quality
  - Biology Resources
  - Geology and Soils
  - Agricultural Land Use
  - Groundwater
- Both Action Alternatives would result in significant and unavoidable impacts:
  - Cultural
  - Land Use
  - Transportation



# NEPA/CEQA Environmental Review Process



# Project Schedule



\*Opportunity for public input

Draft EIS/R Public review period



# Review of Draft EIS/R

Public Review of Draft EIS/R is May 7, 2020 through June 22, 2020. A digital copy of the Draft EIS/R is available for download on Reclamation's website and Friant Water Authority's website.

[https://www.usbr.gov/mp/nepa/nepa\\_project\\_details.php?Project\\_ID=41341.](https://www.usbr.gov/mp/nepa/nepa_project_details.php?Project_ID=41341)

<https://frianwater.org/projects>

Hard copies are also available at the following locations:

- Friant Water Authority: 854 N. Harvard Ave. Lindsay, CA 93247 (please call ahead to schedule an appointment 559-562-6305)
- City of Porterville, City Clerk's office: 291 N. Main St. Porterville, CA 93257





# Submitting Comments

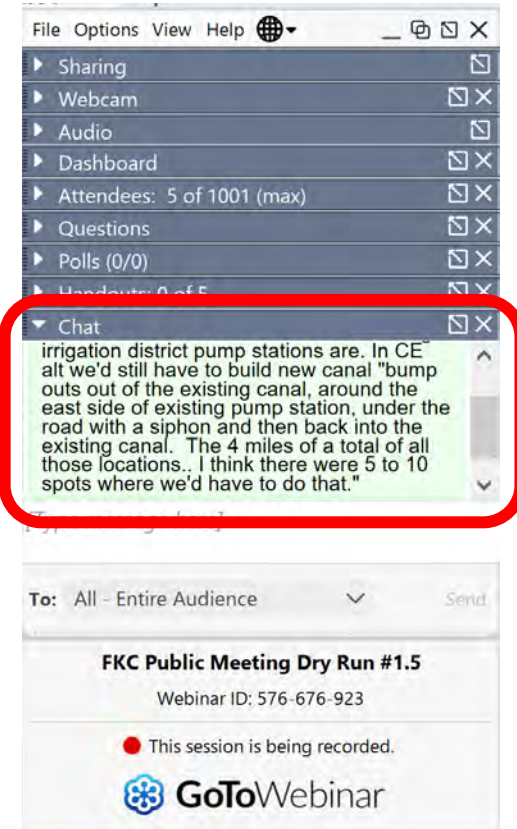
- **Methods to submit comments on the Draft EIS/R**
  - Webinar
  - U.S. Mail: Postmarked June 22, 2020
  - Fax: 559-262-0371
  - Email: 5 p.m. (PST) on June 22, 2020

Rain Emerson  
Bureau of Reclamation  
1243 N Street  
Fresno, CA 93721  
[remerson@usbr.gov](mailto:remerson@usbr.gov)

Doug DeFlicht  
Friant Water Authority  
c/o Ms. Toni Marie  
854 N. Harvard Ave.  
Lindsay, CA 93247  
[FKCProjectComments@stantec.com](mailto:FKCProjectComments@stantec.com)



# Clarifying Questions



The screenshot shows a webinar interface with a menu on the left and a chat window on the right. The menu items are: Sharing, Webcam, Audio, Dashboard, Attendees: 5 of 1001 (max), Questions, Polls (0/0), and Handouts: 0 of 5. The chat window is highlighted with a red border and contains the following text:

irrigation district pump stations are. In CE alt we'd still have to build new canal "bump outs out of the existing canal, around the east side of existing pump station, under the road with a siphon and then back into the existing canal. The 4 miles of a total of all those locations.. I think there were 5 to 10 spots where we'd have to do that."

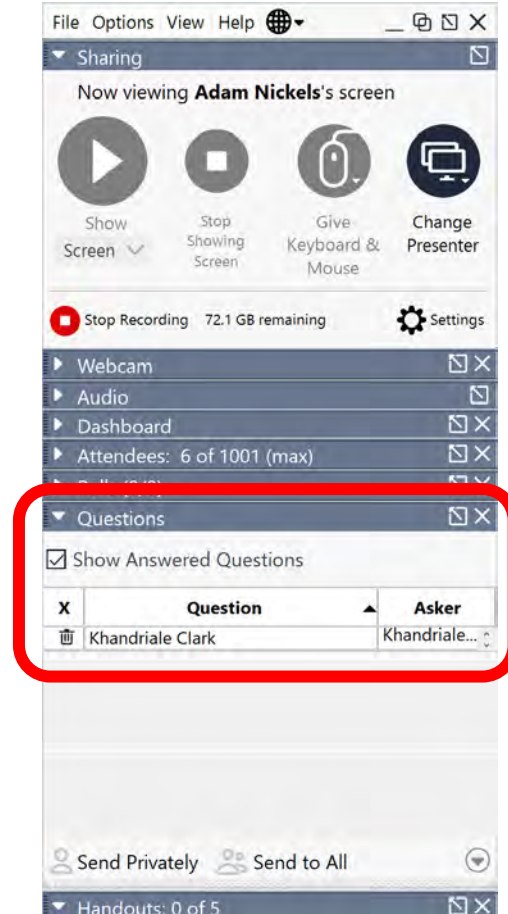
Below the chat window, the webinar title is "FKC Public Meeting Dry Run #1.5" with Webinar ID: 576-676-923. A red dot indicates "This session is being recorded." and the GoToWebinar logo is visible at the bottom.



# How Will the Public Comment Process Work?

When the comment period starts:

- Comments will be taken in the order they were received.
- When it is your turn, the moderator will call your name and open your microphone.
- Please state your company or organization name, if applicable.
- Please limit your comments to 3 minutes or less.
- Staff may respond to some comments for clarification purposes.
- After all comments are received, all microphones will be opened to check for additional commenters.



# Public Comment Process

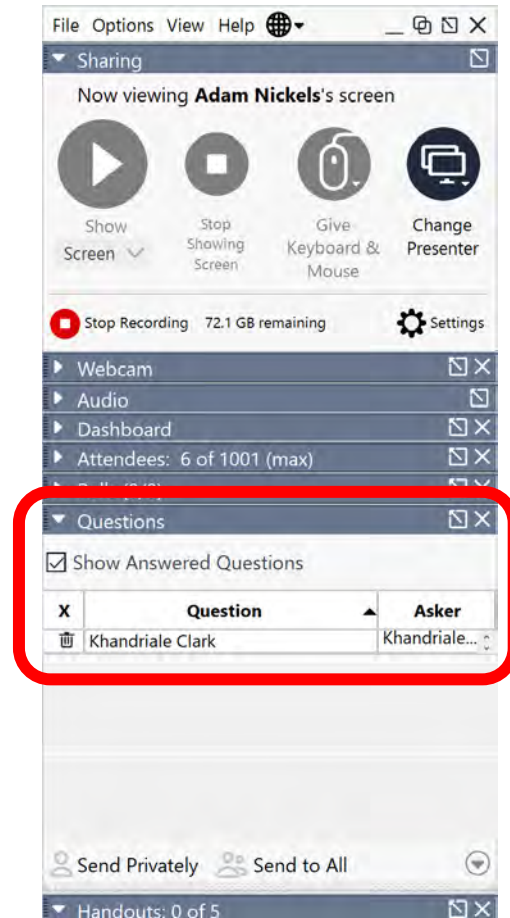
## Online Participants:

- Open the “Questions” tab in the GoToWebinar dashboard.
- Insert your request or comment and click the “Send” button.

## Conference Call Participants:

- Send a text message with your full name to 916-642-6383.

After all comments are received, all microphones will be opened to check for additional commenters.







Thank you