

YEAR IN REVIEW

2020



landworks studio^{INC.}

A few thoughts about 2020 and 2021.

The People/Team

At the beginning of this new year, I would like to take a brief moment to express my deepest appreciation and gratitude to the team here at Landworks Studio for their commitment to taking on with enthusiasm and optimism the myriad of challenges that 2020 presented to all of us. Despite those challenges, their contributions to the work, to the studio, to their local communities and to each other made this one of the most educational, memorable and inspirational years in the history of this small Studio.



And as dreadful as 2020 was from almost any perspective, it would be a mistake to too quickly put it all behind us, as it was the uniqueness of the situation(s) of 2020 that spawned an unmistakably unique spirit of innovation, discovery and adaptability, underscored by an enhanced and warming guiding spirit of empathy. It's my hunch that these discoveries, adaptations and lessons learned will follow us into 2021 and beyond, enriching and enhancing our process of design in general and office culture in particular. As many others have done, we collaborated not only from our homes but from several different time zones, showcasing a commitment to the production of excellent work and to one another during the most unstable times. Though we continue to work across globe, we look forward to the time when we're able to gather and celebrate this year's accomplishments in person.

Interestingly, we owe to 2020 a big "thank you" for having instigated a renewed and intensified focus on the importance of communication and support of one another as a community. Clearly, the approach to the design of our shared landscapes will forever be altered by the events of 2020. Moving forward, how might what we've seen in our cities and towns over the past several months inform our approach to the design of public space and publicly accessible spaces as it relates to greater issues of social equity and access?

Design Context

Our decision to both purchase and then renovate the Quad here in downtown Salem, MA, is in part an extension of the trajectory of the work of our firm that has been evolving over the past several years: the focus upon the in-between zones, adjacencies and overlaps between public and private interests, where cogent dialogue between the two so often determines the quality and sustainability of the resulting public realm. The rationale behind our work here in the Quad is to test in the context of real-time urban experiences the interactions between the program of the Quad and our neighbors while facilitating unprecedented access through our site and between the Northfields Neighborhood and Downtown Salem and Salem Station. Whether through sharing of veggies produced in our garden, providing hang-out opportunities for neighboring families, projecting outdoor movies, or by just



Solitaire Tower, Taichung, Taiwan



Mountain to Bay Framework Plan, City of Shenzhen, China

making the passage as interesting as possible, we have become familiar with our community and they with us. In turn, we all have grown to support one another over the course of this difficult year (smile, wave and visit) – a much needed expansion of the sense of community. As a group, we’ve been learning a lot and applying these lessons learned to our recent collaborations.

A Promising Year Ahead:

In 2021, our team looks forward to continuing ongoing commissions and new projects throughout the United States and Internationally.

On the International front, we have several large-scale mixed-use and residential projects with Pao Huei Construction in Taichung, Taiwan, who throughout the years has put forth a tremendous effort in improving the public realm and streetscapes of the Seventh District, which continues to enliven the historic arts district as well as other neighborhoods in their great City. Along with Adele Santos and her team at Santos Prescott and Associates, we have been working with Shenzhen City Planning and other Agencies and Departments to hone ecologically principled strategies for urban growth. Our recent Mountain to Bay Framework Plan for the City of Shenzhen, China, is one of our most unique and dynamic collaborations, establishing ecological fabric and connectivity north to south through the city, providing habitat for the region’s local and migratory bird life, including reorganizing a section of the waterfront to create necessary ecological conditions to ensure the expansion of the wonderful Mangrove Preserve adjacent to our site. The final Framework Plan and Report will be published in the coming weeks. In Shanghai, the design process for our competition winning proposal ‘Crystal’ will begin shortly, a mixed-use project by CR Land and architects Rogers Stirk Harbour + Partners.

Regionally, our work with highly creative developers in the DC area has yielded a series of high-rise building conversions from underperforming office buildings into innovative Live/Work communities. The latest in this series is presently on the boards: the renovation of 3 office towers into a mix of residential, work, and commercial spaces along with the conversion of an expansive parking lot into a public park continues into 2021 with construction to follow shortly thereafter.

On a more local scale, we are enjoying a new partnership with Kuth Ranieri Architects as together we address the complicated issues of sea level rise and coastal resiliency facing Rock Harbor in Eastham, MA, as a location for a new harbor master’s house is determined. We’ll also be resuming work on the Provincetown Waterfront as well as on a large-scale project on the East Boston waterfront, where we completed the Master Plan this past Fall. Just yesterday, our work for a large-scale, mixed-use project in Waltham kicked off with our friends at CBT. We’re excited about the role this new project will have in completing an ecologically principled approach to linking a new development with an adjacent park and naturalized forest conditions, which otherwise wrap the perimeter of the site, engaging public access and integrating public programs and amenities.

From evolving the Framework of a large-scale Ecological Corridor in Shenzhen to a unique, mixed-use development in Waltham and many scales and places in between, Landworks Studio has been blessed with an exciting repertoire of projects on the books for 2021. For this we are extremely thankful. We are hopeful that the invaluable lessons provided to us in 2020 that informed the approach to our design process will continue going forward, and that these lessons will also continue to inform an enhanced focus upon the importance of place and community and upon a highly calibrated dialogue between proposal and context that will continue to provide the underlying ethos of our collective vision here at Landworks Studio. We look forward to our strengthening our ongoing collaborations with friends and embrace many new partnerships to come. Though we know that the tough times have followed us into the New Year and that many questions about the future still persist, we carry forward this momentum in the new year as together we face whatever may come.

Michael Blier, FASLA, RLA, Hon BSA
Director of Design, Founding Principal
Landworks Studio, Inc

FINDING CREATIVE WAYS TO

GATHER



IN 2020:

We enjoyed
12
bonfires

We harvested
230
tomatillos, 1000 green beans
and 8 pumpkins

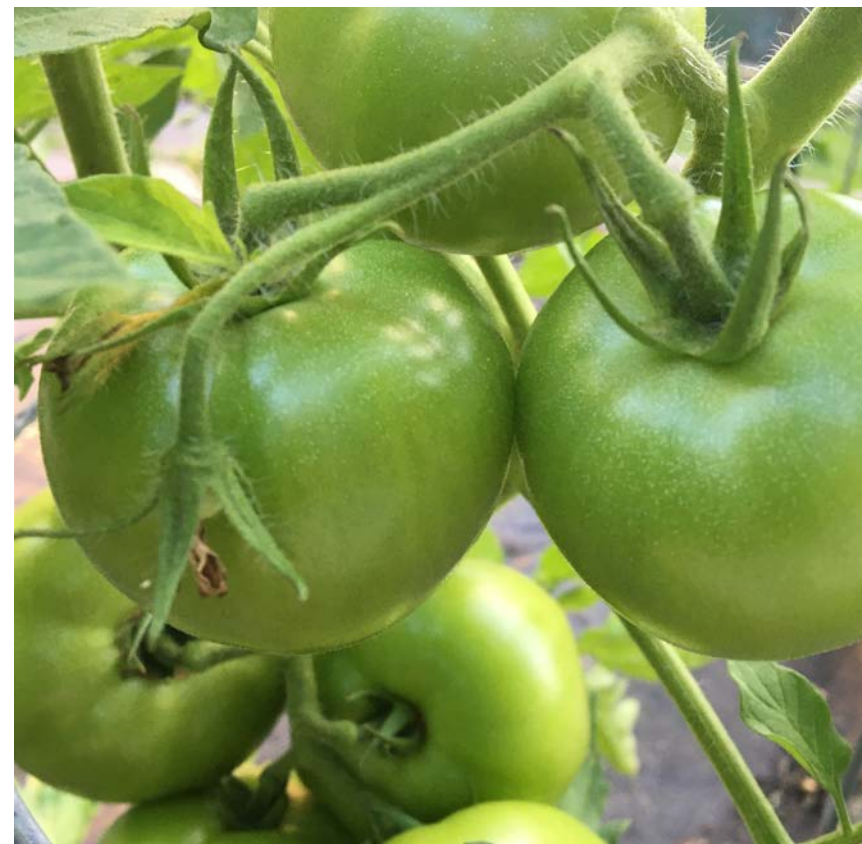
We projected
9
outdoor movies

Design Quad

After months of working remotely, our team decided it was necessary to find some creative and safe way to get together in person. Taking advantage of the large open space of our studio parking lot, and borrowing inspiration from Domino Park in Brooklyn, we created a socially distant circle for the team to gather around a bonfire. It was always our intention to use the parking lot as an open canvas; a space to create freely, test materials in the real environment, a space with really no limitations for use. An interesting result of the painted circles was that people passing by began to use them. It became a playground for kids cooped up in the house for the majority of the day, and for families and friends to socialize outdoors. This small addition to the lot ended up transforming the space into something so much more than a parking lot; it became a cherished community asset, reviving the original intention of the LWS Design Quad – to engage the community in a meaningful way.







2020 A YEAR "NOT" IN THE

OFFICE

IN 2020:

We expanded our
summer program with
3 interns
who joined us remotely

We endured
5535 hours
of Zoom meetings

We welcomed
3 designers
with exceptional talents

New Team Members

In 2020 we proudly welcomed three talented individuals to our team; Will Smith, Susana Ribas, and Yue Wu.

Will joins us from California where he spent 10 years covering a range of project types, from high end design build to large scale public parks. Will brings his interest and experience translating design concepts into physical space in leading design teams as a project manager.

Susana Ribas started her career in environmental studies and landscape architecture in her hometown of Lisbon in 2011. In 2014 she was offered the opportunity to move to Morocco to work for a field construction company which she stayed with for several years, regularly moving between the two countries to work on project design for both private space and public realm. She joins Landworks Studio as a designer.

Yue joined Landworks Studio in July 2020 as an entry-level landscape designer. She received a Bachelor of Science in Urban and Regional Studies and a Bachelor of Arts in Music from Cornell University, and later a Master of Landscape Architecture from Harvard Graduate School of Design. With her training in auditory and visual design, Yue is interested in the interplay of sensory stimuli and how visual, auditory, and tactile sensations influence the experience of a landscape.



Will Smith
Project Manager



Susana Ribas
Landscape Designer



Yue Wu
Landscape Designer

Summer Interns

Despite the challenges and uncertainty we all faced this Spring, Landworks decided to move forward with the 2020 internship program and welcomed Taylor Harrell, Jamie Hark and Magic Sun to the team. "I'm very proud of the way it all came together over the summer, especially in light of all going on around us," reflects Founding Principal Michael Blier, "I'm sure their memories will be meaningful, lasting and subsequently contribute significantly to the foundation of their careers as designers, which seems inestimable to me from what I saw from them."



Jamie Hark

The University of Virginia, MLA 2022



Magic Sun

Harvard Graduate School of Design, MLA 2022



Taylor Harrell

University of Tennessee, Knoxville, MLA 2021

2020 COMPLETED

WORKS

IN 2020:

We transformed
115,000 sq.ft.
of impervious surfaces
into pervious surfaces

We planted
540
trees and 15,250
understory plants

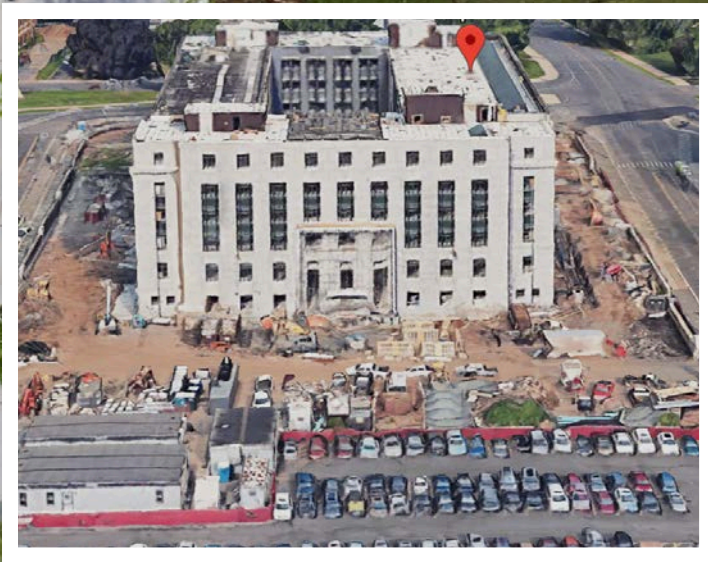
We created
21,000 sq.ft.
of rooftop spaces

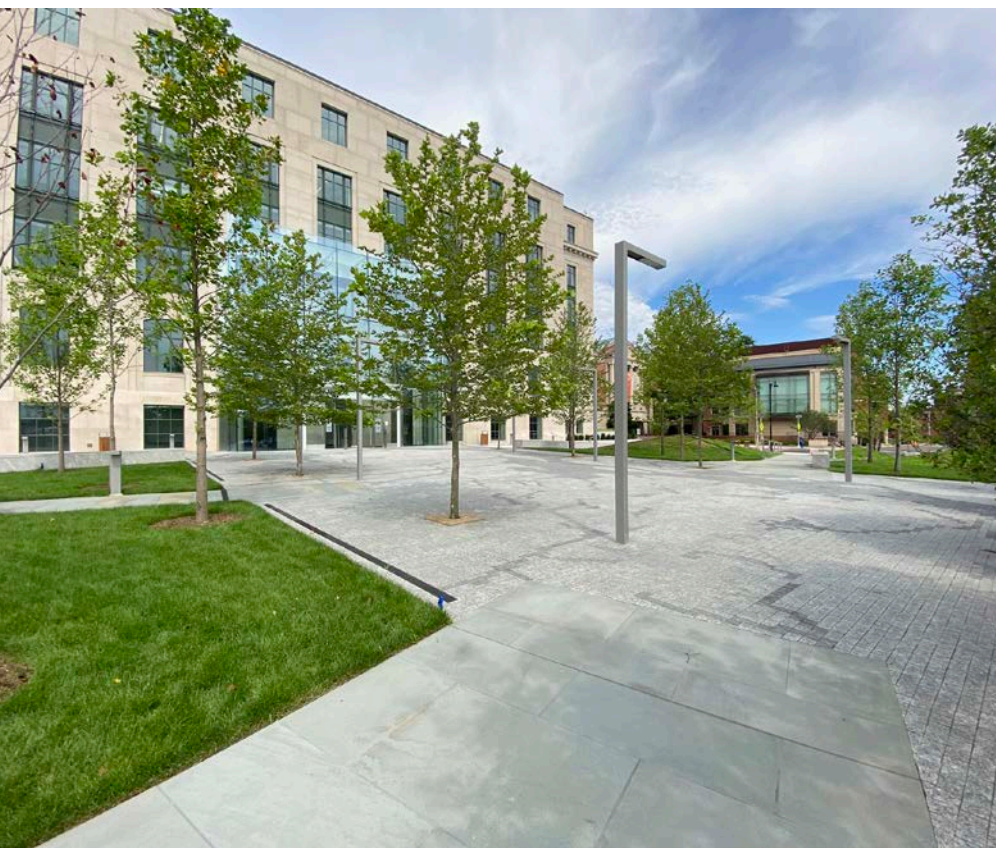
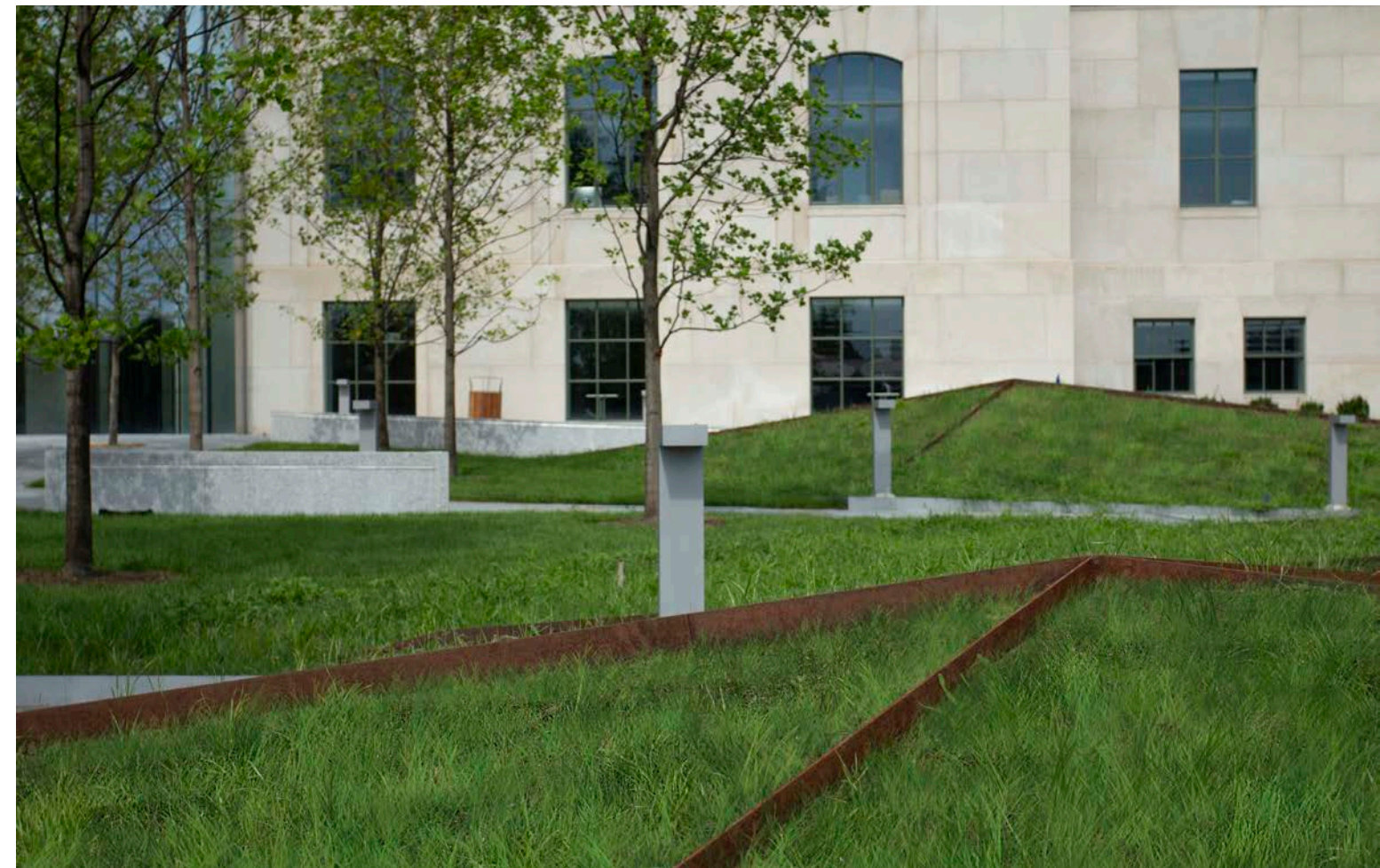
165 Capitol Avenue

Hartford, CT

The transformation into a vibrant 21st century workplace of the previously deteriorated 1931 Government office building in Hartford's historic district that houses the State of Connecticut's Attorney General, Secretary of State, State Treasurer, and staff offices has recently been completed.

Landworks Studio, Inc. is proud to have worked collaboratively with Amenta Emma Architects and the Manchester Office of Fuss & O'Neill, Inc., amongst others, to meet the State's robust vision of rejuvenation for this significant building and site which together play a pivotal role in Hartford's urban plan meant to stitch historic downtown assets to a one-mile chain of parks, plazas and the renewed Connecticut River waterfront. This adaptive reuse project exceeds both sustainability and accessibility standards and hosts the first new greenspace in Hartford's historic center in over 50 years.



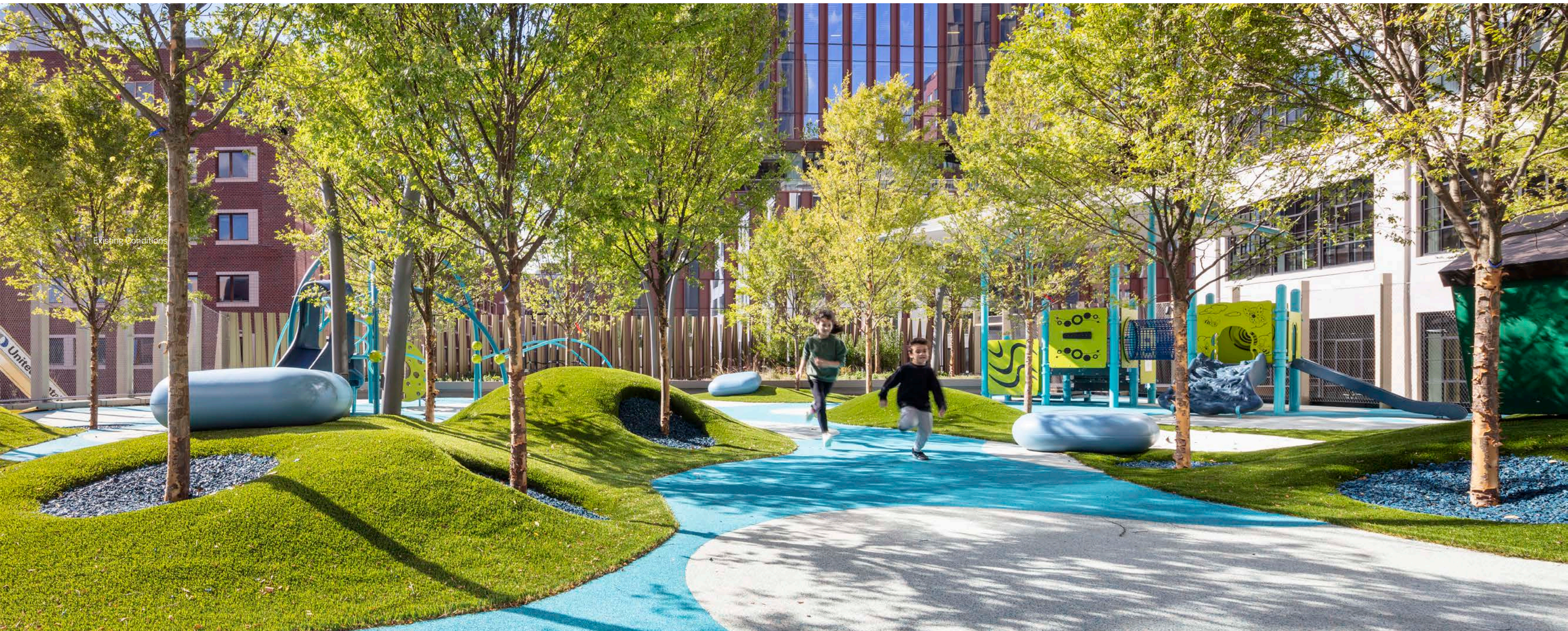


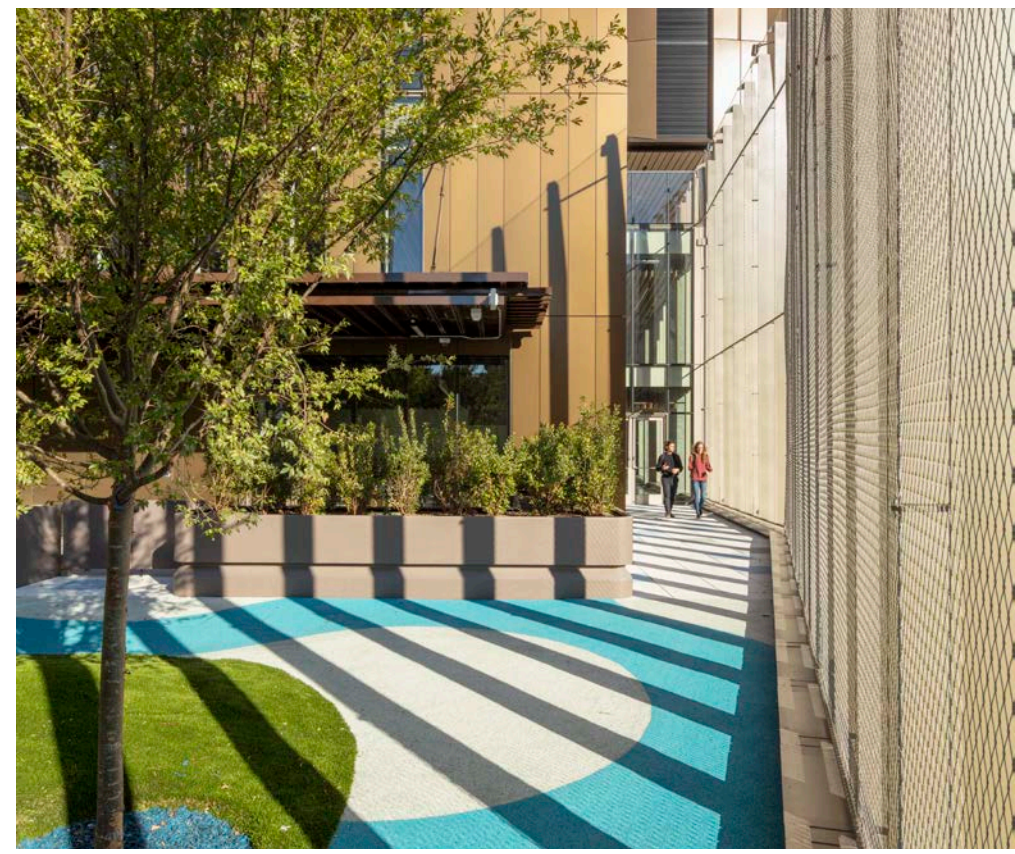
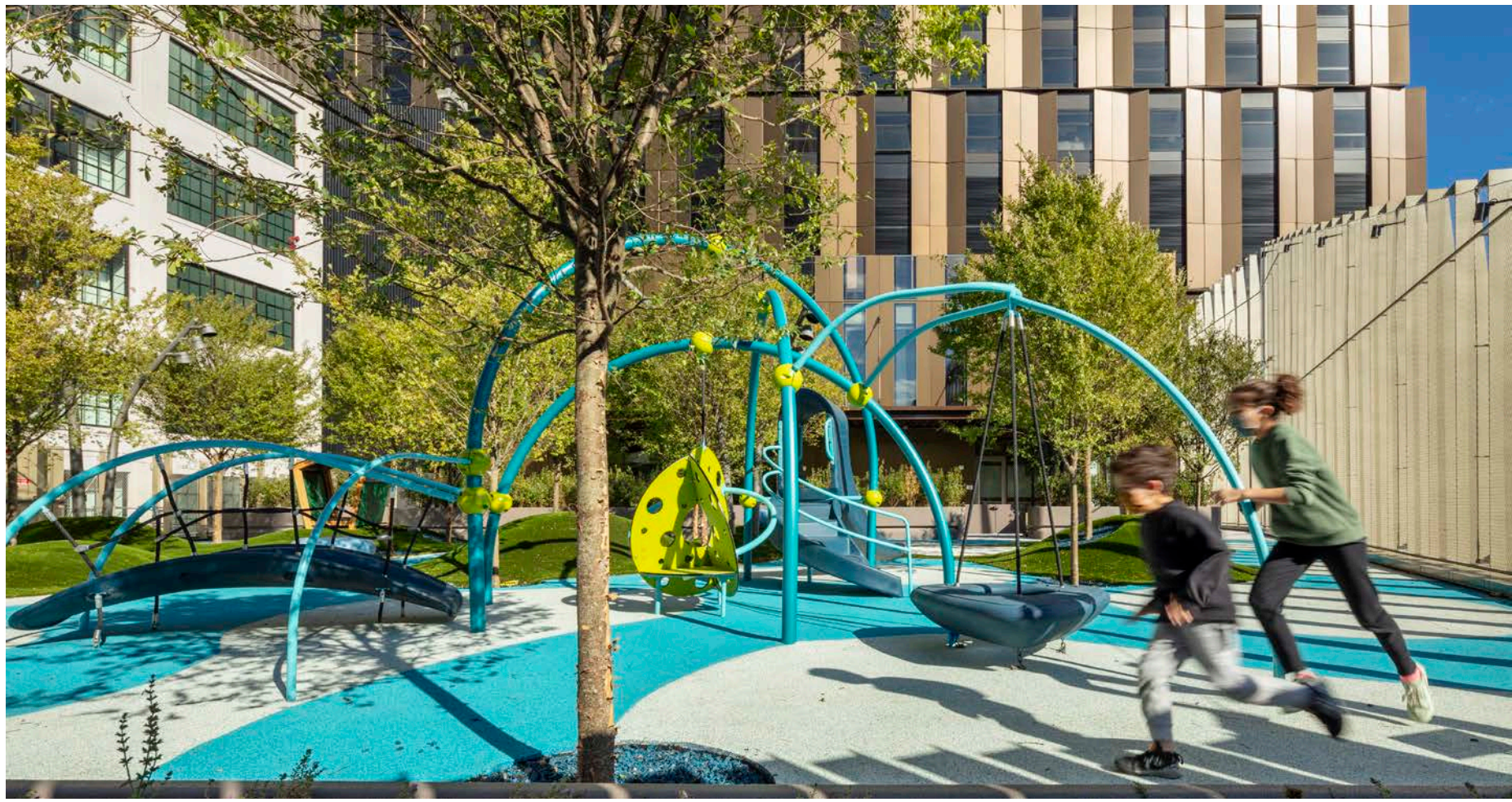
MIT Kendall Square Site 4

Cambridge, MA

The tower at MIT Site 4 includes graduate student housing, a child-care facility, academic offices, and retail spaces on the ground floor. Landworks Studio designed the outdoor playspace terrace for the adjacent child-care facility.

It was the goal of the design team to create a fun and innovative outdoor room that could be inhabited in various ways over time. Instead of integrating the play equipment into the form making of the playspace, the focus of the redesign turned towards providing a more robust outdoor 'room' environment into which 'off the shelf' play structures can then be placed and replaced over time as wear and tear and improved play equipment becomes available or desired.



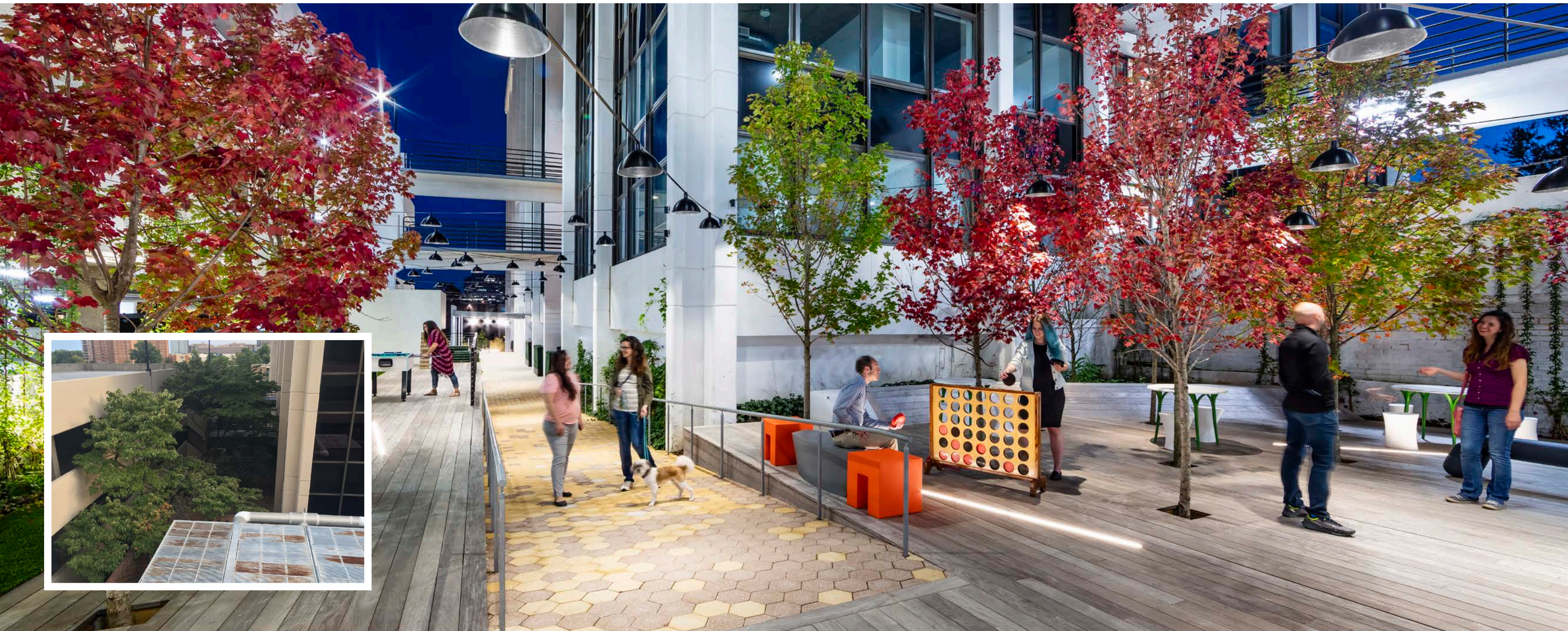


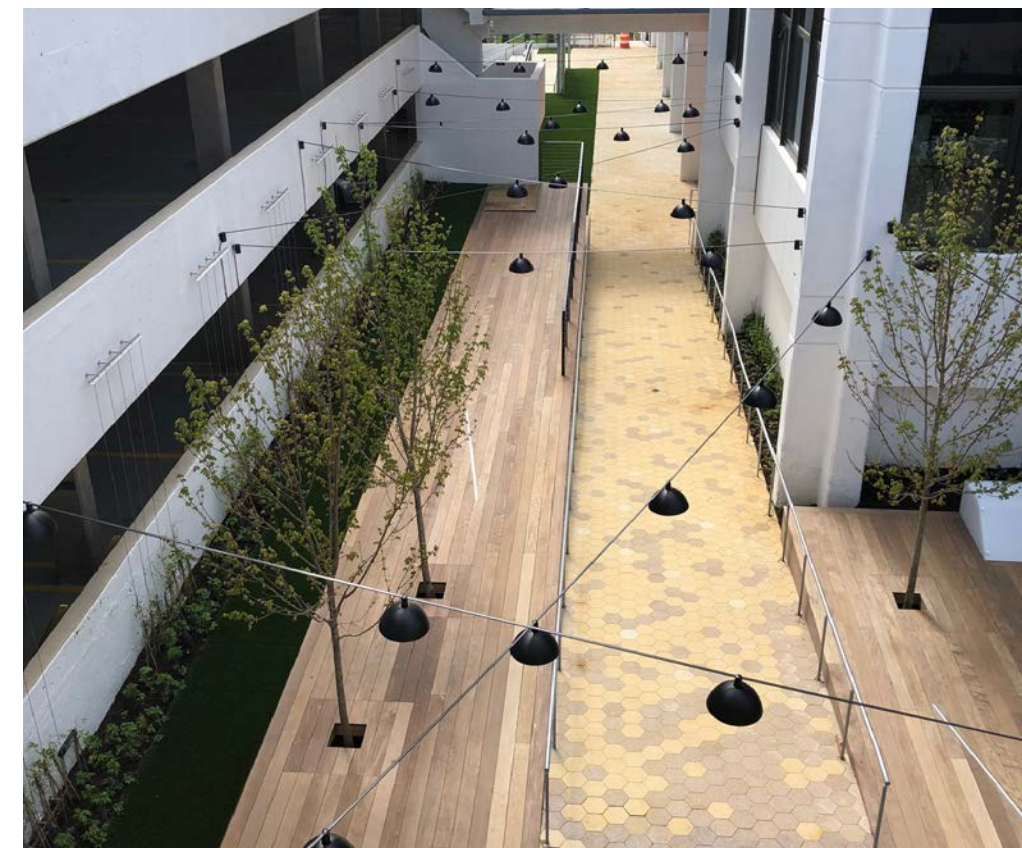
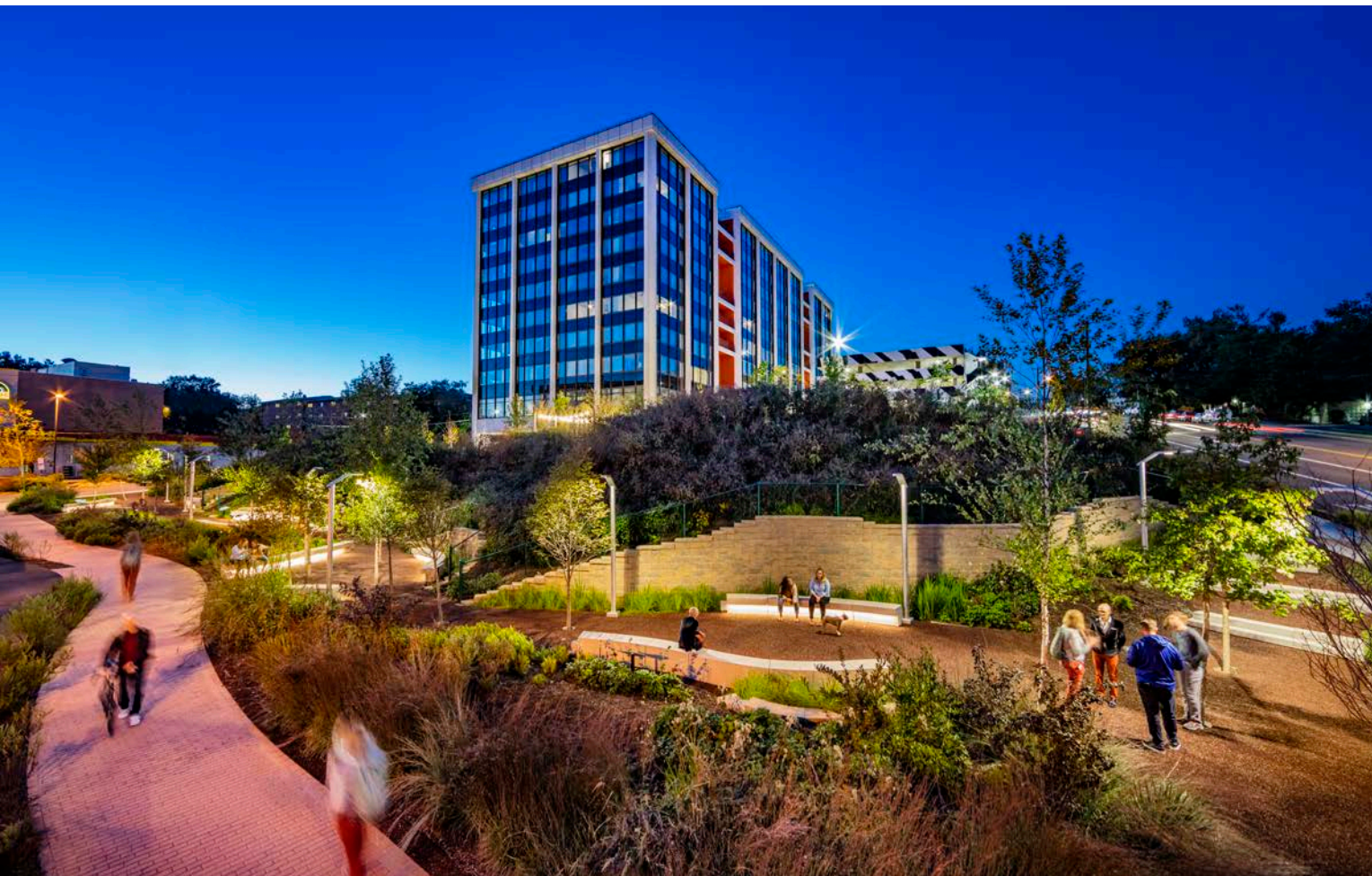
Mission Lofts

Falls Church, VA

Mission Lofts is the second in a series of urban housing projects that have repurposed vacant office buildings into live work environments. Critical to the success of these projects are multi-functional rooms, both indoors and out, which allow for group and individual work space and meeting rooms. Play between indoor and out allows for tenants and guests to move seamlessly, taking advantage of light, temperature, privacy, and space. More formal conference spaces can be reserved in advance while flexible spaces provide further opportunities for large gatherings.

The public realm of the project addresses a very harsh intersection and provides a level of respite not typical of Columbia Pike. The Meander, through a birch, oak, tupelo grove, addresses stormwater BMP and provides educational signage, applicable for businesses and homeowners. Over a half acre of parking has been transformed into a hillside meadow, orchard, and community garden.

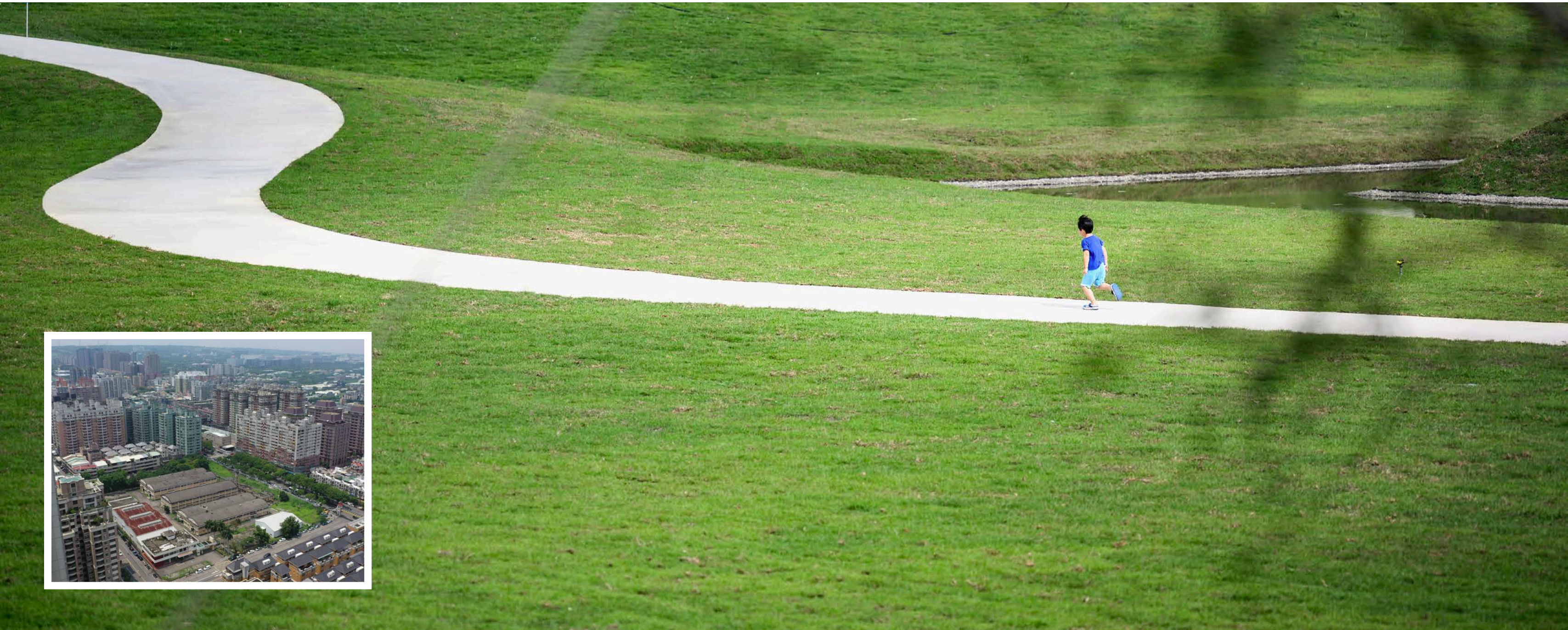


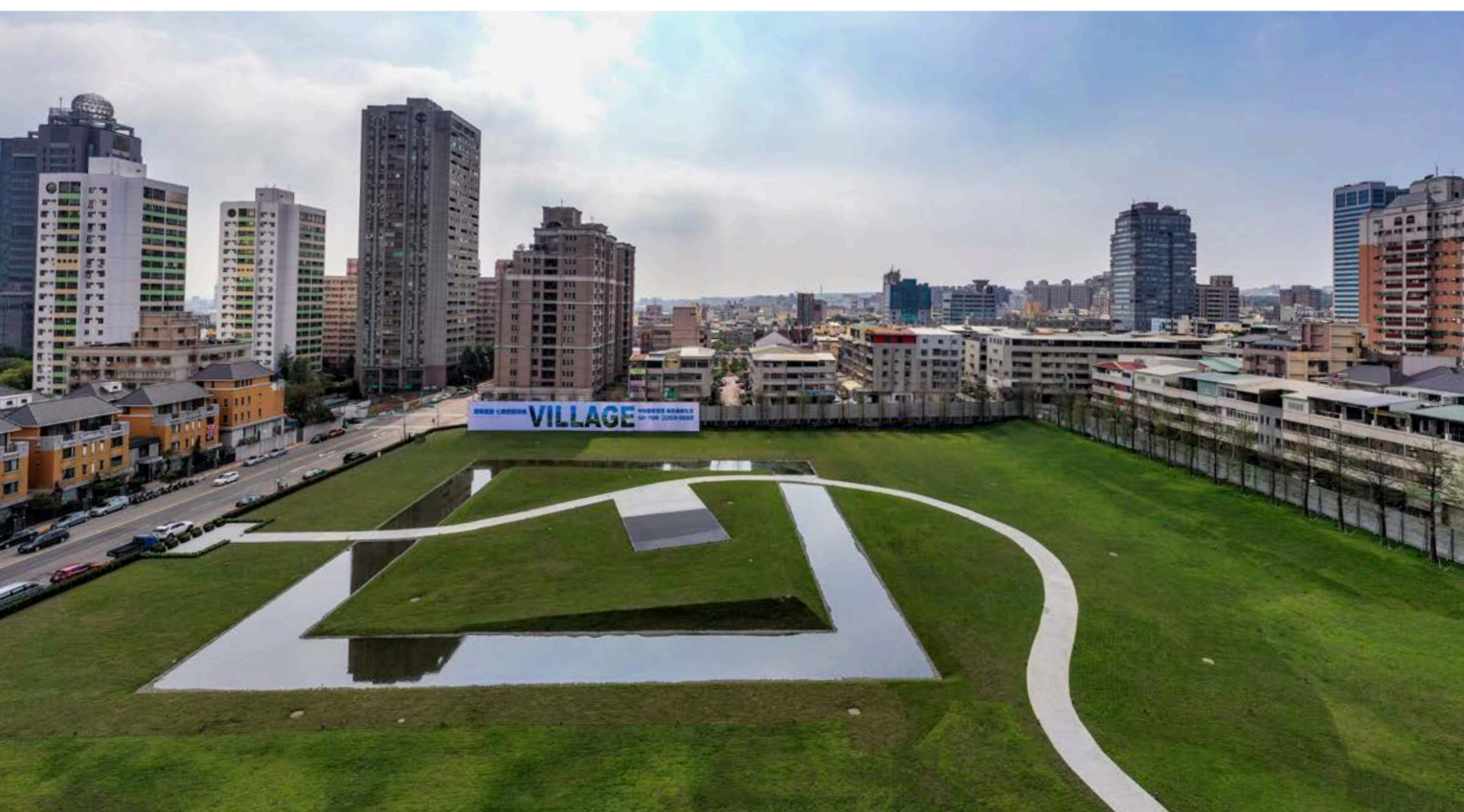


Dadong Neighborhood Park

Taichung, Taiwan

The New Neighborhood Park is the latest in a series of publicly accessible spaces created by Pao Huei which stand as precursors to the future development on those sites. Rather than fencing off large parcels of land awaiting future development and working with various public agencies, the Pao Huei Company has a long and elegant history of committing significant resources to the introduction of interim landscapes and other amenity spaces for adjacent neighborhoods. Designed, constructed and maintained by Pao Huei, these extensive investitures of resources into the neighborhoods demonstrate to the local community and general public the value and commitment to public realm that underscores the work of Pao Huei within the urban fabric of Taichung, Taiwan. The Neighborhood Park, within the dense Dadong District, was preceded by an extensive environmental clean-up of an extremely contaminated industrial site and thereby transformed into an unprecedented open space for community events, holiday gatherings, weddings, and the like. The planting of large Metasequoia trees line the surrounding streets and frame a flexible open middle ground punctuated by a central gathering island. Though temporary in nature, the phenomenon of interim public spaces provides a very unique set of conditions related to design criteria and public realm, street edge and public/private dialogue.





Mangrove Museum and Mountain to Sea Corridor

Shenzhen, China

Landworks Studio along with Santos Prescott and Associates was tasked with completing the design brief for the Mangrove Museum and Mountain to Sea Corridor, a pursuit to create green spaces and vibrant places within the high-density city of Shenzhen. The primary objective for the project was to create a framework for new public spaces that integrates the ecology and culture of different landscape zones extending from the mountains, through the city fabric and down to the bay. The first zone, Mangrove Park, deals with the elimination of invasive species and re-introduction of mangroves in efforts to restore the ecology damaged by industrialization. The second zone is the Sea of Flowers, a landscape built upon a platform to create hills and valleys for local flora and fauna to emerge. Following the Sea of Flowers is another landscape built on a platform that extends over an existing railyard. This landscape will develop as an urban forest with nesting walls for migrating birds that will also provide a connection to the new Mangrove Museum, the most comprehensive museum on mangroves in the world. The fourth zone is the expo-park, a restored landscape showcasing traditional Chinese gardens. Next, the corridor arrives at the mountain foothills, the planned site of a new Architectural building and an Arts and Culture Center. The final land bridge will extend from the foothills, up to the mountain.

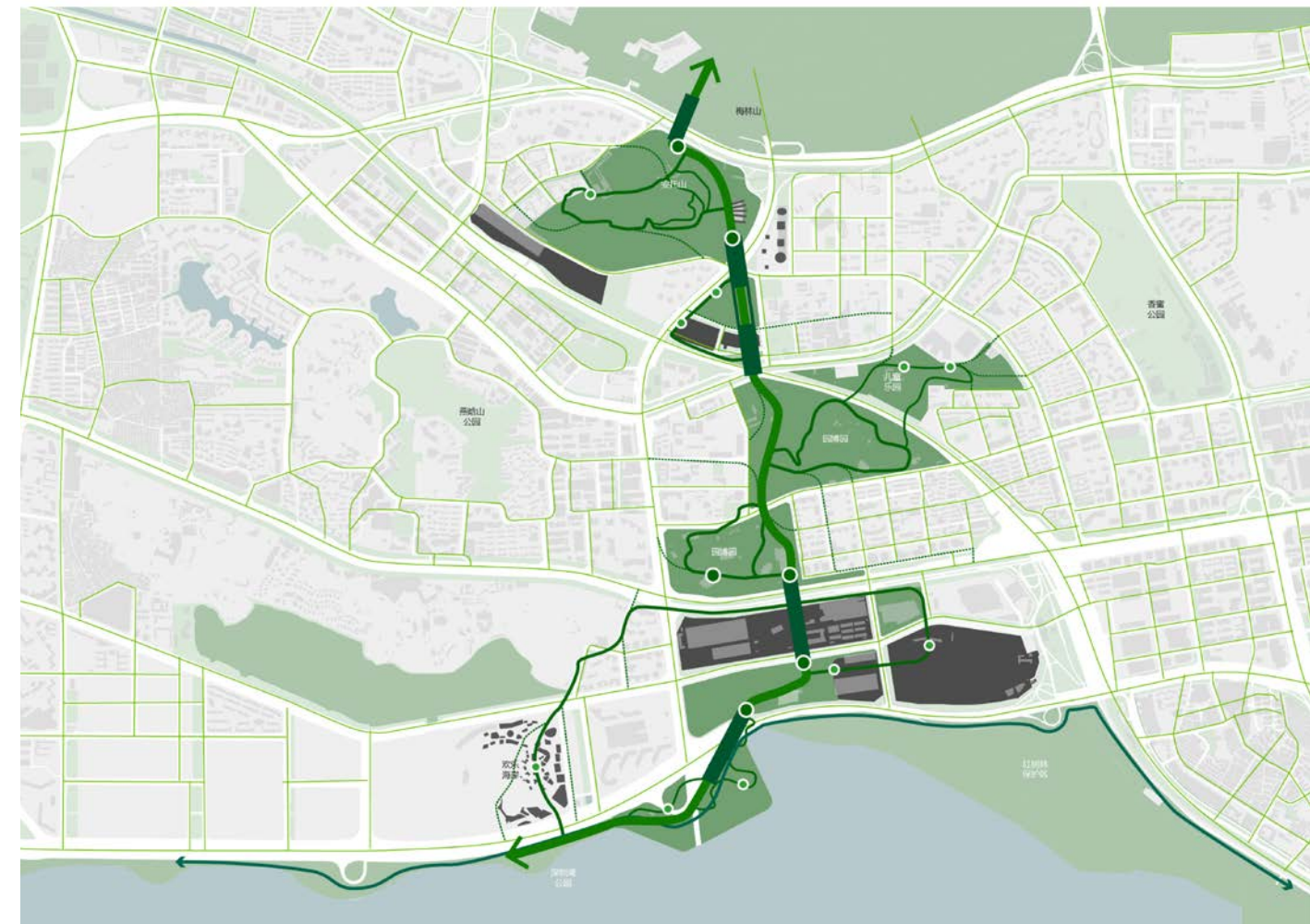


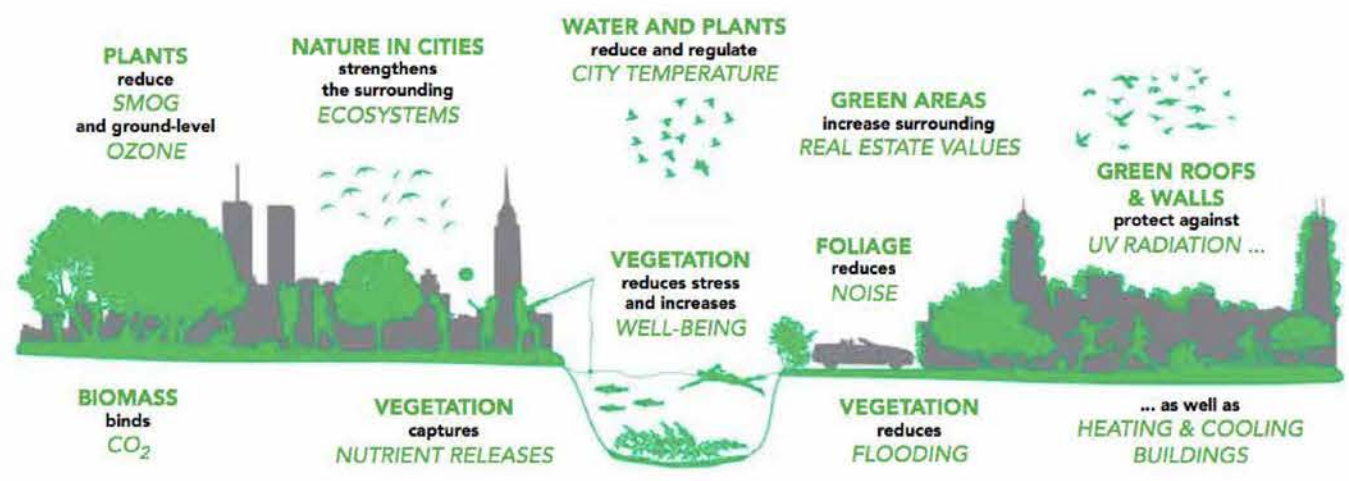
Reconfigure the Platforms for an Uncertain Future

1. A mountain-forest self-driving bus line providing a fast and direct connection between tourist spots in 5 kilometers from mountain to sea
2. North-south mountain to sea and East-west waterfront no interruption bicycle and hiking trails.
3. No gated community. Provide 5 walking loops stitching together the community and the public parks.
4. An electric cable car connecting Antuo mountain to the northern mountain peak (340km)

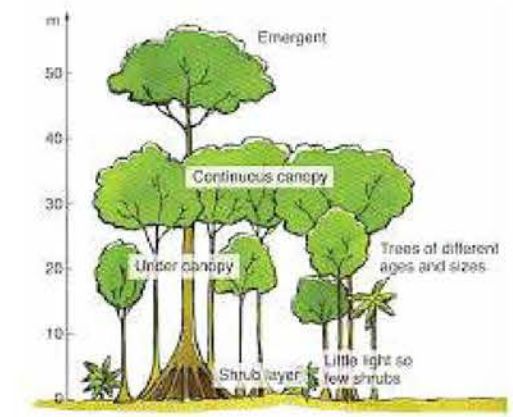


Interconnecting Loop Systems

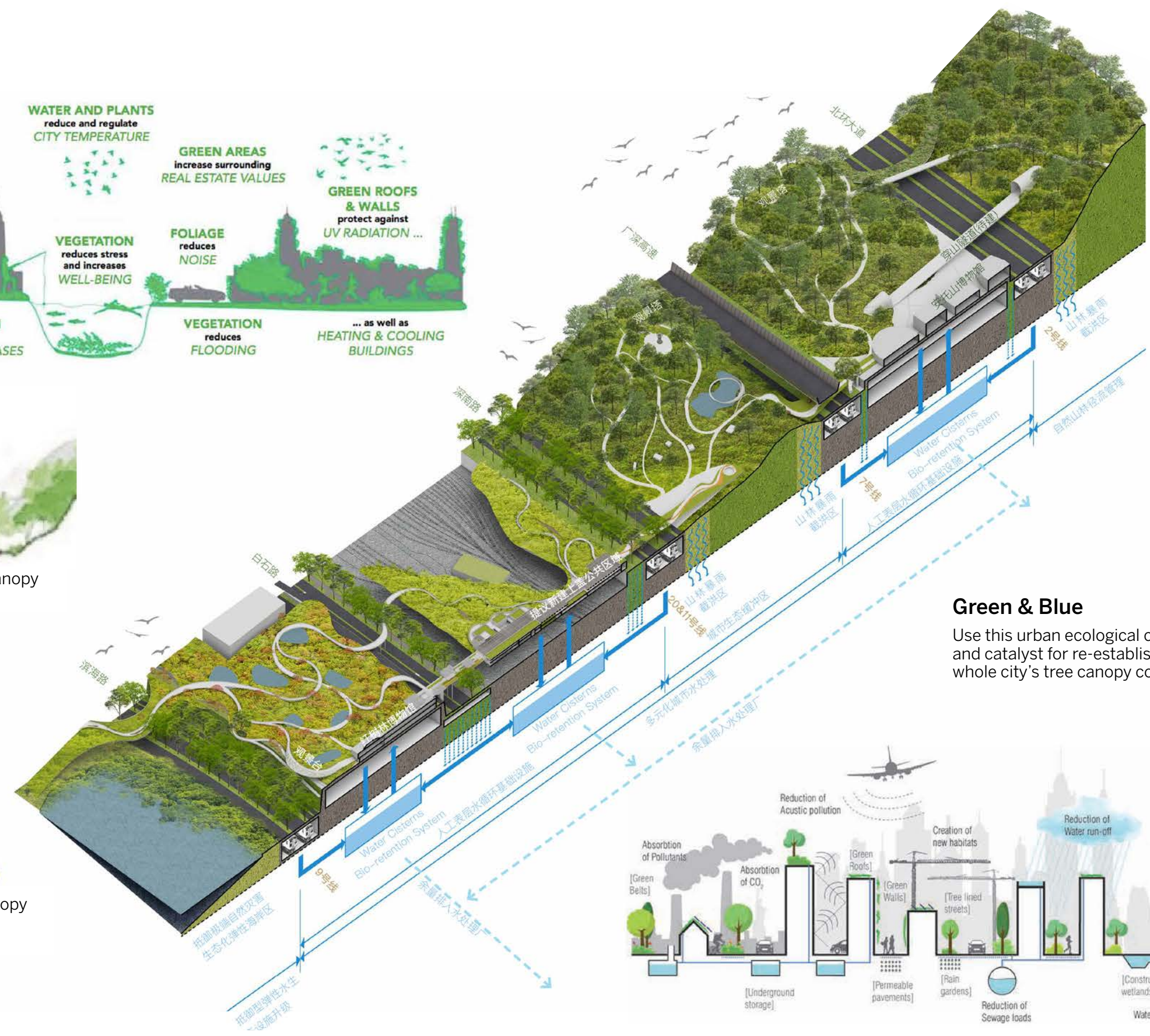




From Mountain to Sea Continuous Canopy

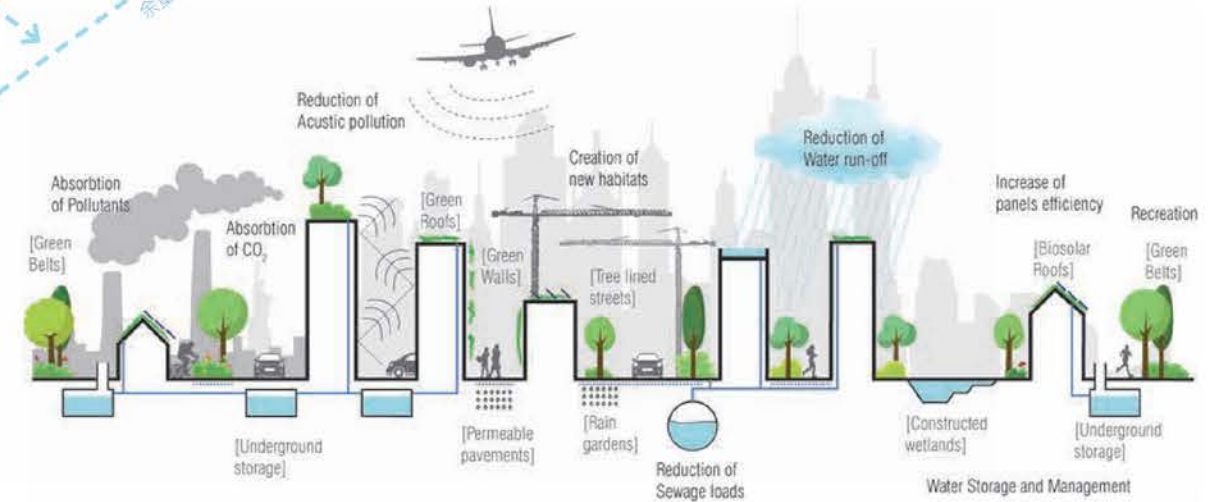


Adaptation of Complete Forestry Canopy Layers into City Environment



Green & Blue

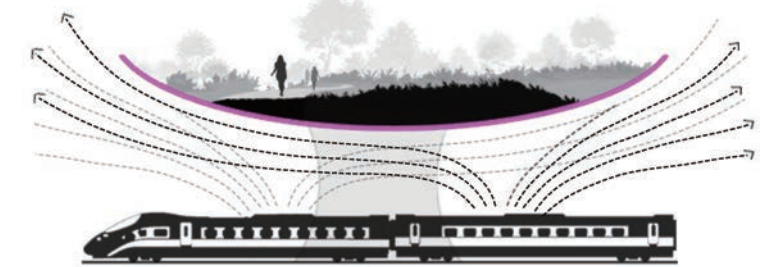
Use this urban ecological corridor as a platform and catalyst for re-establishing and nurturing the whole city's tree canopy coverage





ECO PROTECTION PRINCIPLE

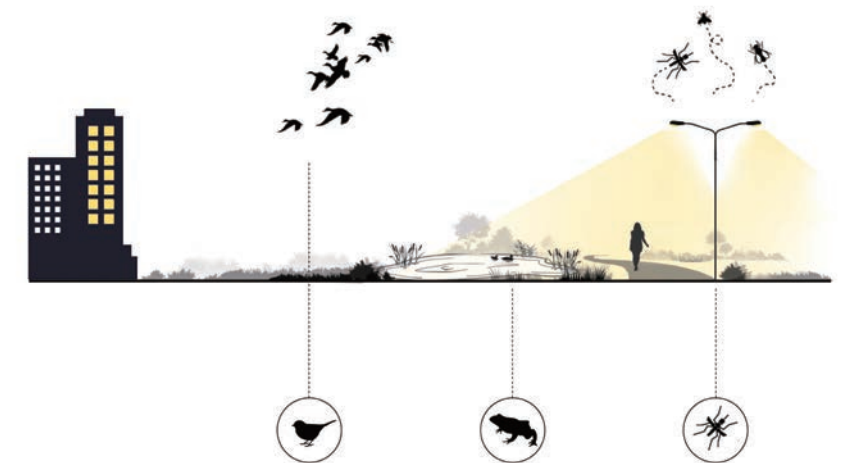
Noise Barriers



Noise Barriers



Light Pollution: Disruption of Nocturnal Activity



2020 GOOD

NEWS

IN 2020:

Nearly
50,000
web page views

We were awarded
Winning Entry
CR Land Shanghai

Merit Award in Design
BSLA Award
Solitaire Tower

Crystal Wins It!

Shanghai, China

Landworks Studio is pleased to announce that our entry entitled 'Crystal' has been declared by the prestigious development group CR LAND the winning entry in an invited competition for a new mixed-use development in the Center of Shanghai. The Architect is Rogers Stirk Harbour + Partners. The Landworks Studio proposal was selected for its unique and artful approach to sustainable placemaking and for its ability to knit building, site and adjacent urban programs and materials into a cohesive, seamless whole. The project is set to become a new, innovative, artful cultural center within this emergent neighborhood. The site and landscape component of the project includes shared public/private street scapes, gathering areas, a new urban threshold into the adjacent historic Zhang Yuan Village, multiple access points to an expanding subway system, several roof top amenity spaces and a multi-storied sky garden at the top of the towers.



WINNING ENTRY:
CR LAND SHANGHAI

Solitaire Tower

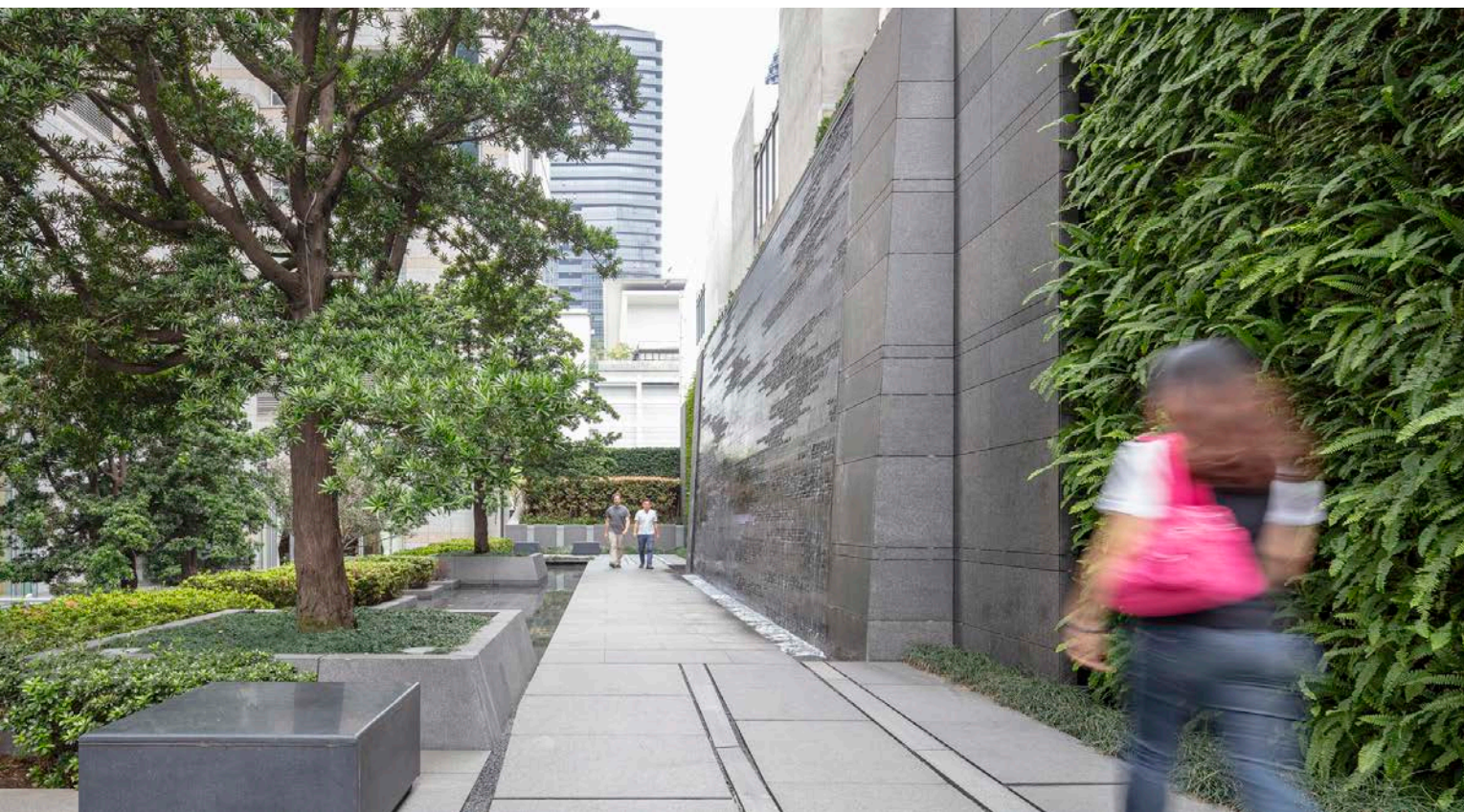
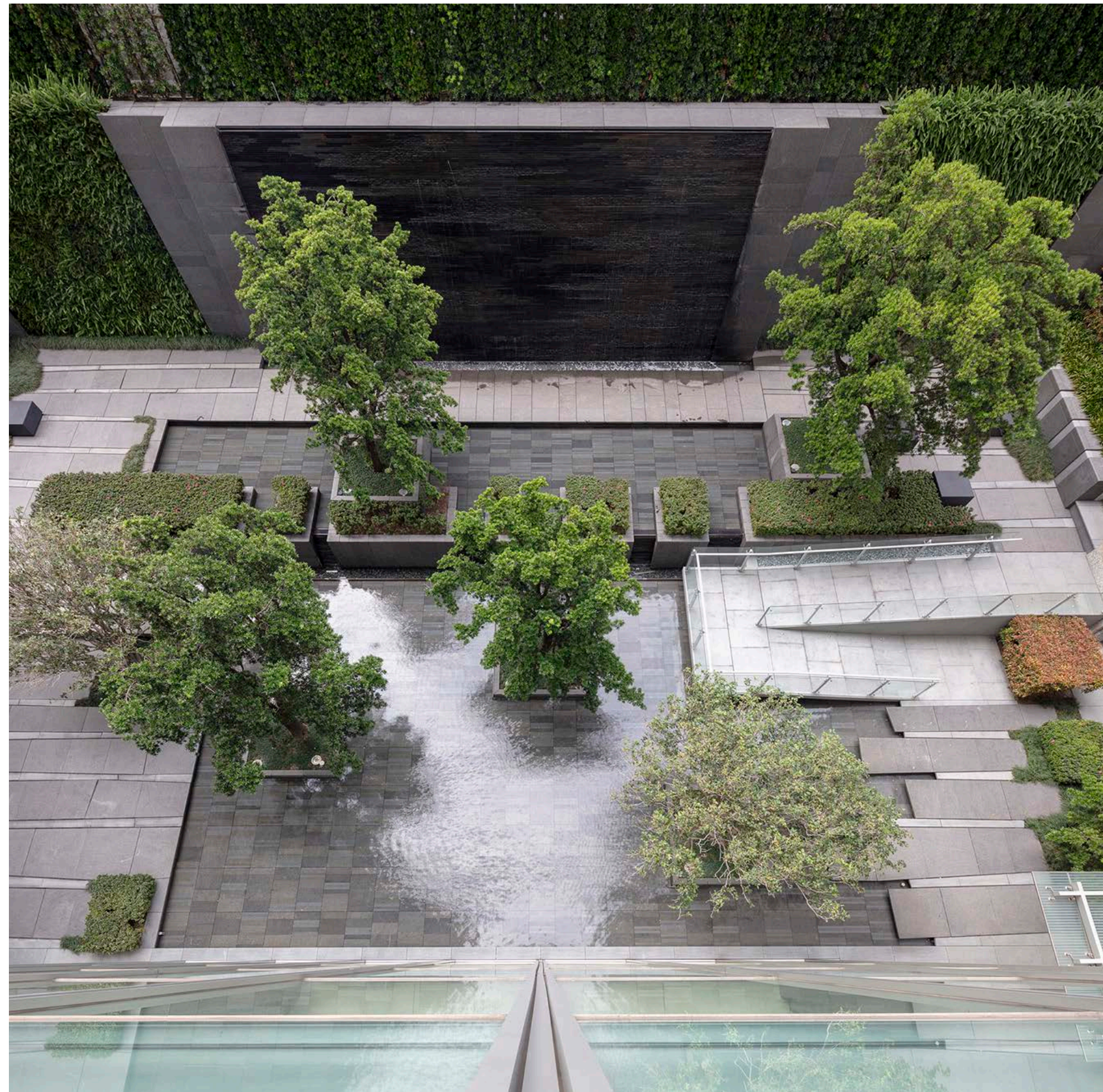
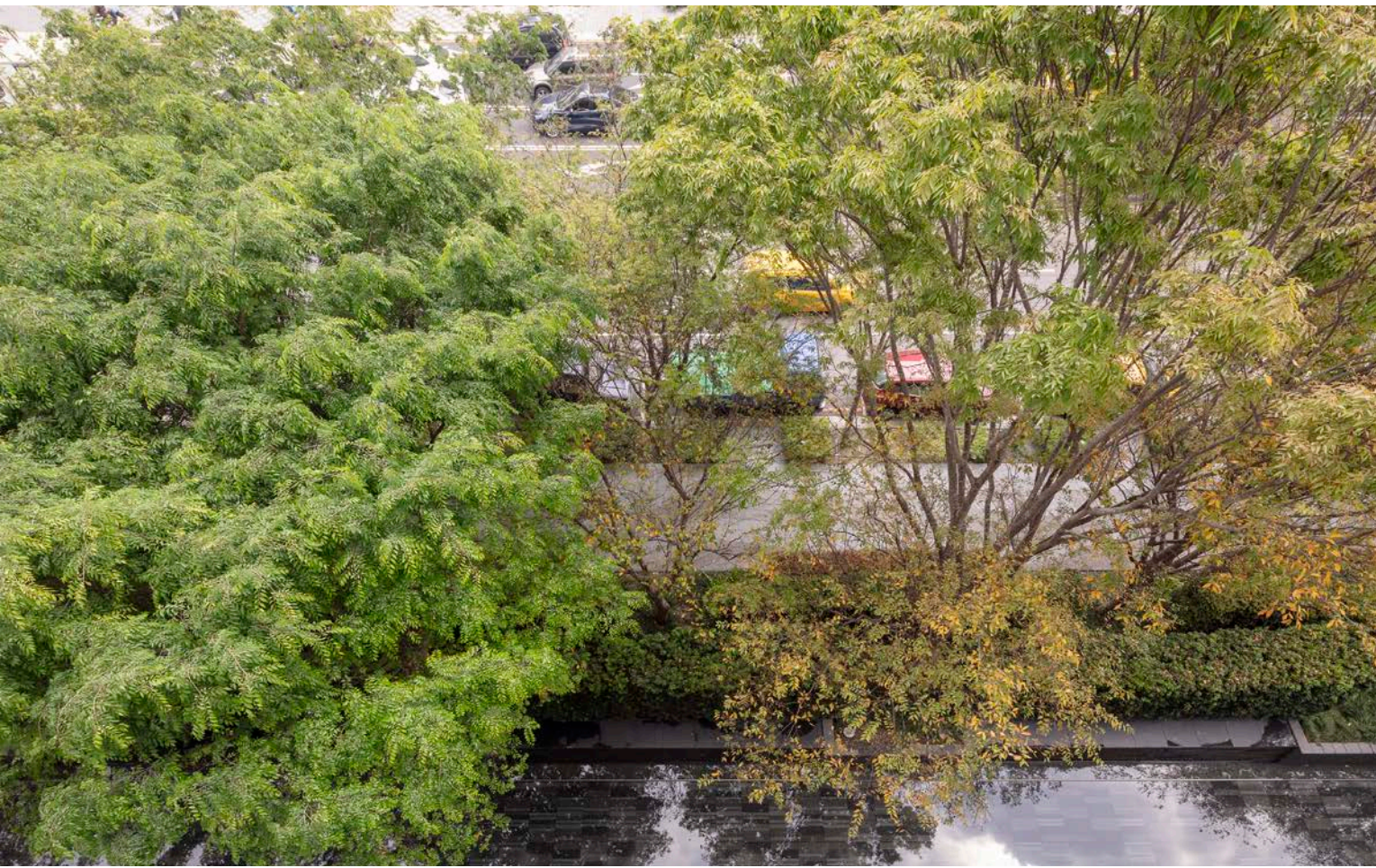
Taichung, Taiwan

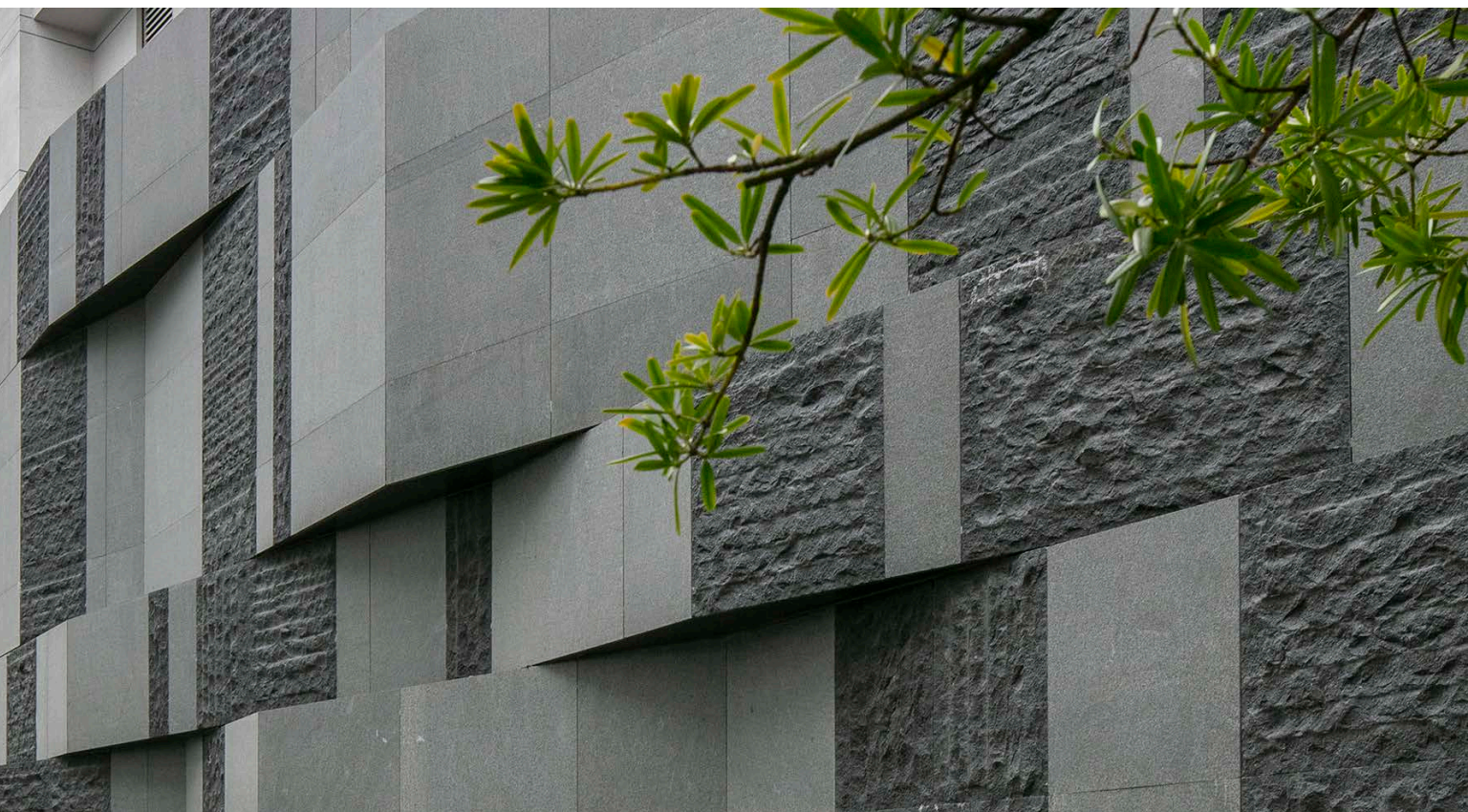
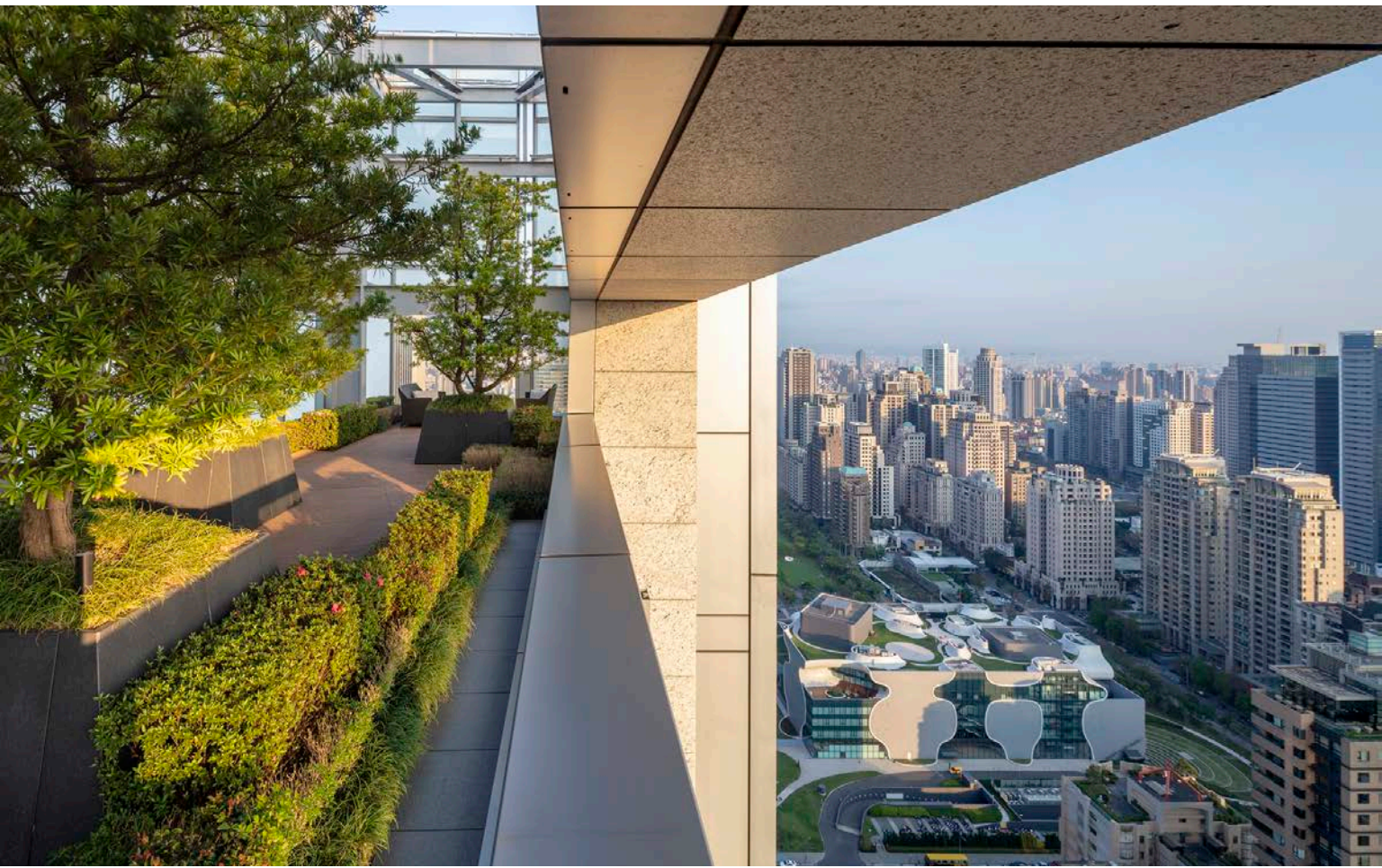
This summer, we were honored to receive a BSLA Merit award for the Solitaire Residential Tower in Taichung, Taiwan. Solitaire Tower is one in a series of projects Landworks Studio completed with the esteemed group at Pao Huei Development. The concept for this 41-story, condominium tower emerged from its proximity to the Taiwan Opera House in the Seventh District, an institution that has come to represent the center for the Arts in Taichung. The series of landscapes and terraces are defined by the artful combination of natural materials and geometric patterning to achieve fully immersive experiences throughout the site. The design team took careful delight in establishing innovative dialogue between the textures and tones of natural materials, geometries, organic plant materials and dramatic swings in light and temperature conditions, micro-climates and building technologies.

Several new projects in the Seventh District are currently in the conceptual phase. We look forward to our continued collaboration with our friends at Pao Huei in the upcoming year.



**BSLA MERIT AWARD
SOLITAIRE TOWER**





A Promising Year Ahead

In 2021, our team looks forward to continuing our ongoing commissions and new projects throughout the United States and internationally. We have refined our collaborative skills as a global team, with employees working in various time-zones from Taiwan to Portugal, and Salem to Dallas. In the year ahead, we will continue to embrace the multitude of skills, knowledge and perspectives learned from our individual experiences and communities across the globe.



HERE'S LOOKING TO

2021

For more information go to:
www.landworks-studio.com



landworks studio^{INC.}

83 North Street, Salem, MA 01970 | 617.426.3030