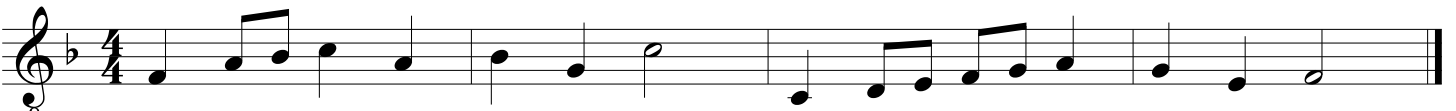
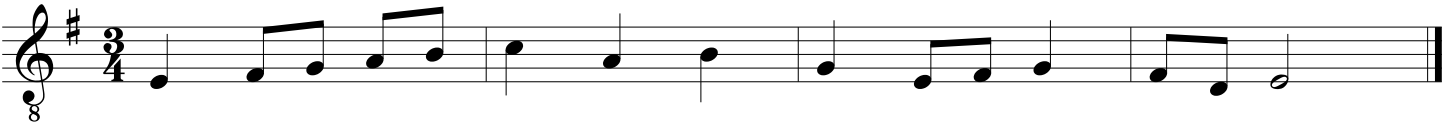


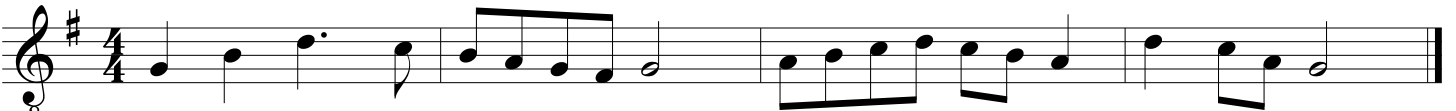
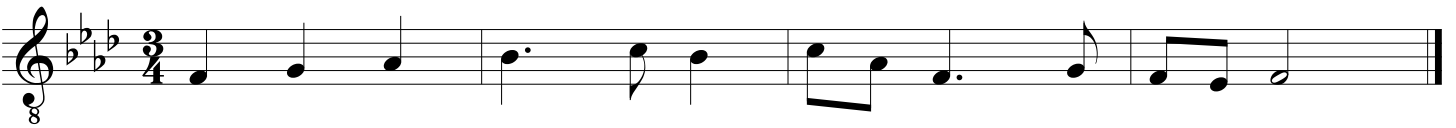
GMEA All State Chorus Sight Reading

9th-10th Grade Tenor

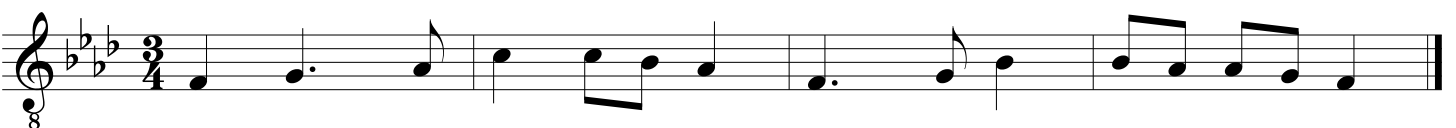
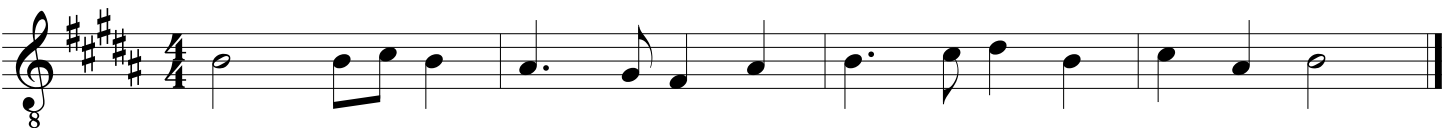
2001-02



2002-03



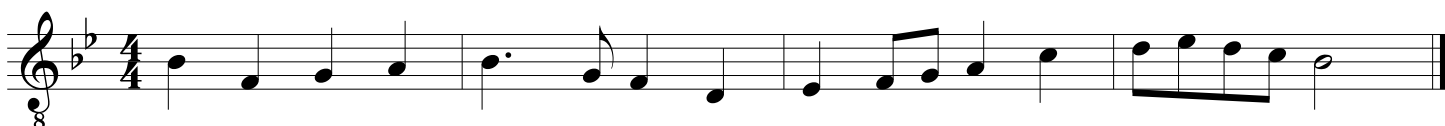
2003-04



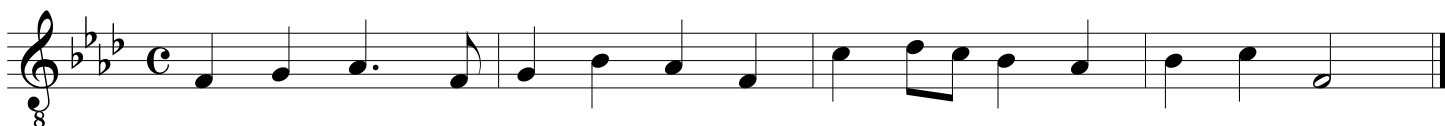
GMEA All State Chorus Sight Reading

9th-10th Grade Tenor

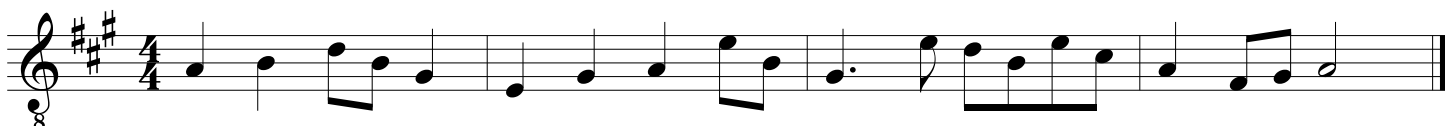
2004-05



2005-06



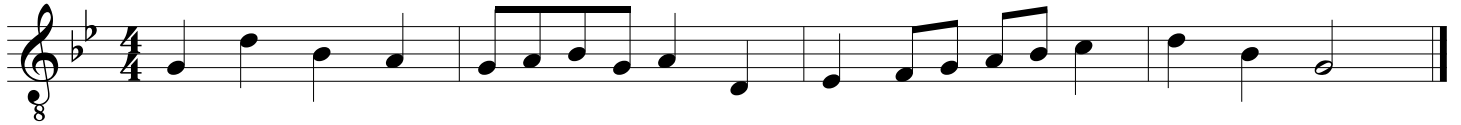
2006-07



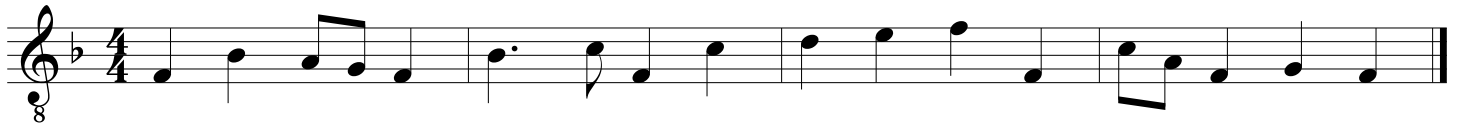
GMEA All State Chorus Sight Reading

9th-10th Grade Tenor

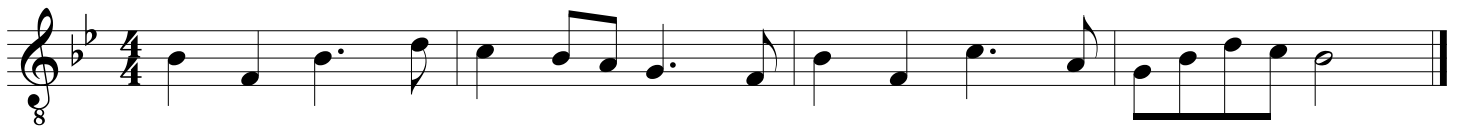
2007-08



2008-09



2009-10



GMEA All State Chorus Sight Reading

9th-10th Grade Tenor

2010-11

Three staves of musical notation for the 2010-11 piece. The first staff is in 4/4 time with a key signature of one sharp (F#). The second staff is in 4/4 time with a key signature of two sharps (F# and C#). The third staff is in 4/4 time with a key signature of three sharps (F#, C#, and G#).

2011-12

Three staves of musical notation for the 2011-12 piece. The first staff is in 4/4 time with a key signature of three sharps (F#, C#, and G#). The second staff is in common time (C) with a key signature of one flat (Bb). The third staff is in 4/4 time with a key signature of two flats (Bb and Eb).

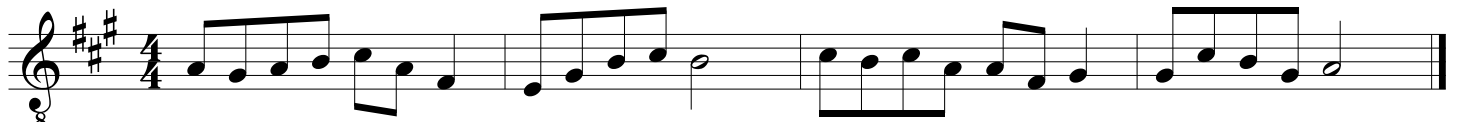
2012-13

Three staves of musical notation for the 2012-13 piece. The first staff is in 4/4 time with a key signature of one flat (Bb). The second staff is in common time (C) with a key signature of four sharps (F#, C#, G#, and D#). The third staff is in 3/4 time with a key signature of three sharps (F#, C#, and G#).

GMEA All State Chorus Sight Reading

9th-10th Grade Tenor

2013-14



2014-15



2015-16



GMEA All State Chorus Sight Reading

9th-10th Grade Tenor

2016-17



2017-18

