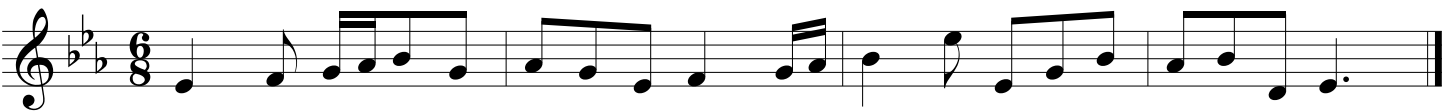


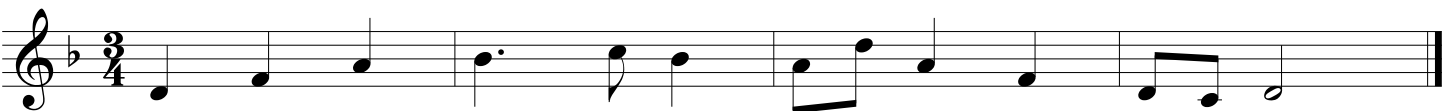
GMEA All State Chorus Sight Reading

11th-12th Grade Soprano

2001-02



2002-03



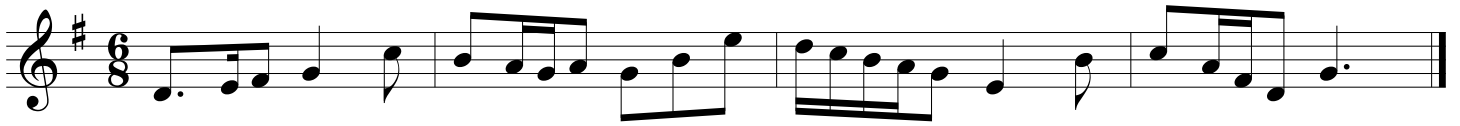
2003-04



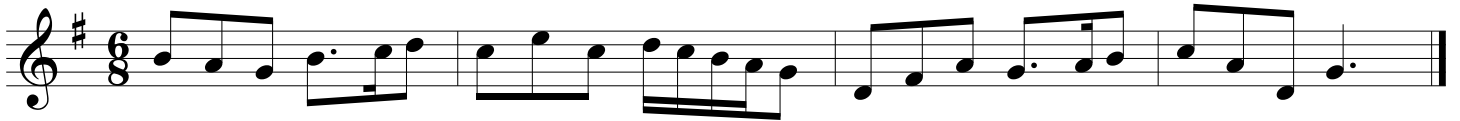
GMEA All State Chorus Sight Reading

11th-12th Grade Soprano

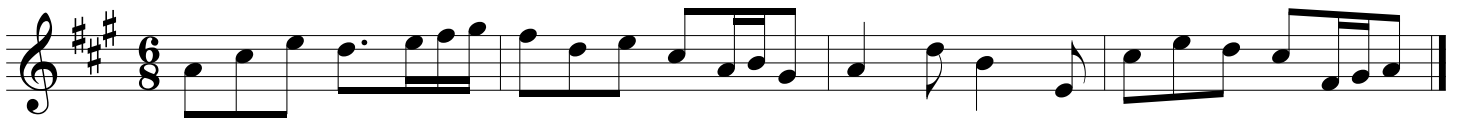
2004-05



2005-06



2006-07



GMEA All State Chorus Sight Reading

11th-12th Grade Soprano

2007-08

Three staves of musical notation for the 2007-08 piece. The first two staves are in 4/4 time with a key signature of one sharp (F#). The third staff is in 6/8 time with a key signature of one sharp (F#). Each staff contains a single line of music with various note values and rests, ending with a double bar line.

2008-09

Three staves of musical notation for the 2008-09 piece. The first staff is in 4/4 time with a key signature of two sharps (F# and C#). The second staff is in 3/4 time with a key signature of one flat (Bb). The third staff is in 6/8 time with a key signature of two sharps (F# and C#). Each staff contains a single line of music with various note values and rests, ending with a double bar line.

2009-10

Three staves of musical notation for the 2009-10 piece. The first staff is in 4/4 time with a key signature of two flats (Bb and Eb). The second staff is in 4/4 time with a key signature of one flat (Bb). The third staff is in 3/8 time with a key signature of three sharps (F#, C#, and G#). Each staff contains a single line of music with various note values and rests, ending with a double bar line.

GMEA All State Chorus Sight Reading

11th-12th Grade Soprano

2010-11

Three staves of musical notation for the 2010-11 piece. The first staff is in treble clef with a key signature of two sharps (F# and C#) and a 4/4 time signature. The second staff is in treble clef with a key signature of one sharp (F#) and a 4/4 time signature. The third staff is in treble clef with a key signature of two flats (Bb and Eb) and a 6/8 time signature.

2011-12

Three staves of musical notation for the 2011-12 piece. The first staff is in treble clef with a key signature of two flats (Bb and Eb) and a 4/4 time signature. The second staff is in treble clef with a key signature of two flats (Bb and Eb) and a common time (C) signature. The third staff is in treble clef with a key signature of two flats (Bb and Eb) and a 6/8 time signature.

2012-13

Three staves of musical notation for the 2012-13 piece. The first staff is in treble clef with a key signature of three flats (Bb, Eb, and Ab) and a 3/4 time signature. The second staff is in treble clef with a key signature of two flats (Bb and Eb) and a common time (C) signature. The third staff is in treble clef with a key signature of two flats (Bb and Eb) and a 6/8 time signature.

GMEA All State Chorus Sight Reading

11th-12th Grade Soprano

2013-14



Three staves of musical notation for the 2013-14 piece. The first staff is in treble clef with a key signature of three sharps (F#, C#, G#) and a 4/4 time signature. The second staff is in treble clef with a key signature of three flats (Bb, Eb, Ab) and a 4/4 time signature. The third staff is in treble clef with a key signature of three sharps (F#, C#, G#) and a 3/8 time signature.

2014-15



Three staves of musical notation for the 2014-15 piece. The first staff is in treble clef with a key signature of three flats (Bb, Eb, Ab) and a 3/4 time signature. The second staff is in treble clef with a key signature of one sharp (F#) and a 4/4 time signature. The third staff is in treble clef with a key signature of three flats (Bb, Eb, Ab) and a 6/8 time signature.

2015-16



Three staves of musical notation for the 2015-16 piece. The first staff is in treble clef with a key signature of one flat (Bb) and a 4/4 time signature. The second staff is in treble clef with a key signature of three flats (Bb, Eb, Ab) and a 4/4 time signature. The third staff is in treble clef with a key signature of three flats (Bb, Eb, Ab) and a 3/8 time signature.

GMEA All State Chorus Sight Reading

11th-12th Grade Soprano

2016-17



2017-18

