

GMEA All State Chorus Sight Reading

11th-12th Grade Tenor

2001-02

2001-02

Three staves of musical notation for the 2001-02 piece. The first two staves are in G major (one sharp) and 4/4 time. The third staff is in G minor (two flats) and 6/8 time. The notation includes various note values such as quarter, eighth, and sixteenth notes, as well as rests and bar lines.

2002-03

2002-03

Three staves of musical notation for the 2002-03 piece. The first two staves are in D major (two sharps) and 4/4 time. The third staff is in D minor (two flats) and 6/8 time. The notation includes various note values such as quarter, eighth, and sixteenth notes, as well as rests and bar lines.

2003-04

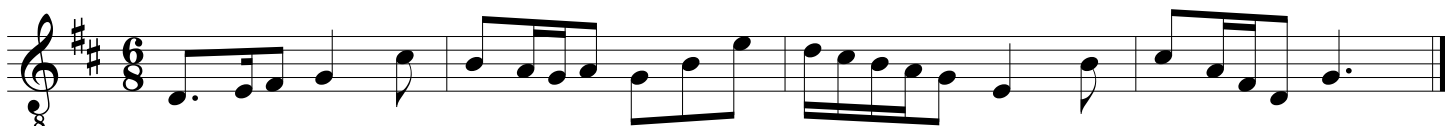
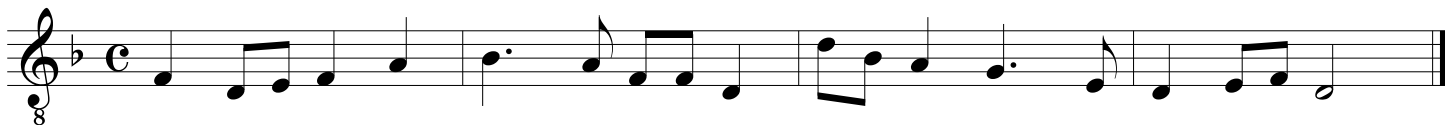
2003-04

Three staves of musical notation for the 2003-04 piece. The first two staves are in D major (two sharps) and 4/4 time. The third staff is in D minor (two flats) and 6/8 time. The notation includes various note values such as quarter, eighth, and sixteenth notes, as well as rests and bar lines.

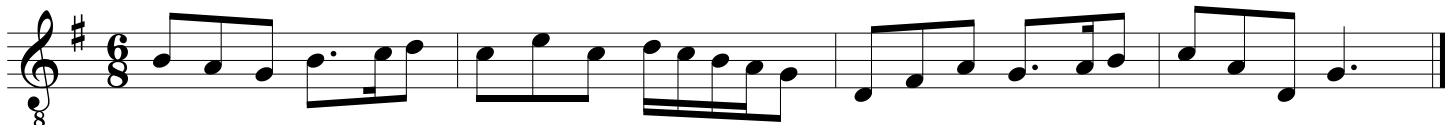
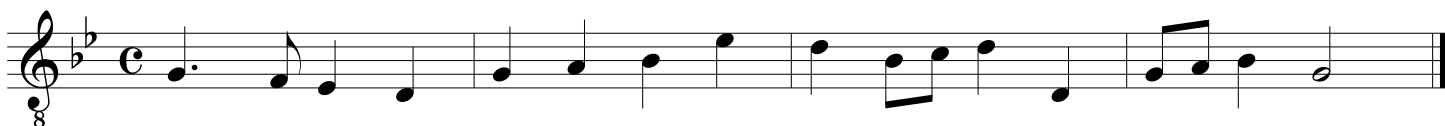
GMEA All State Chorus Sight Reading

11th-12th Grade Tenor

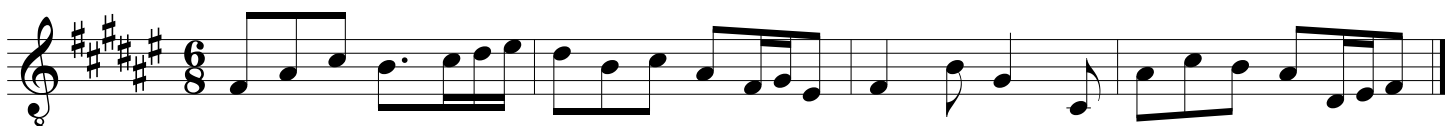
2004-05



2005-06



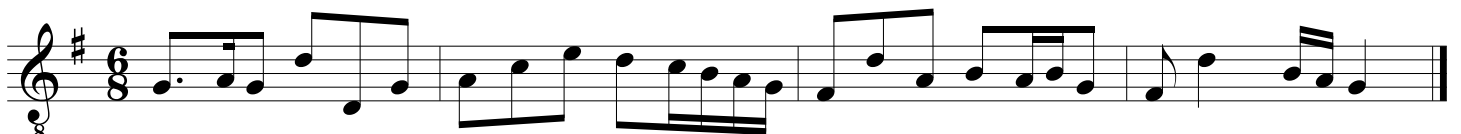
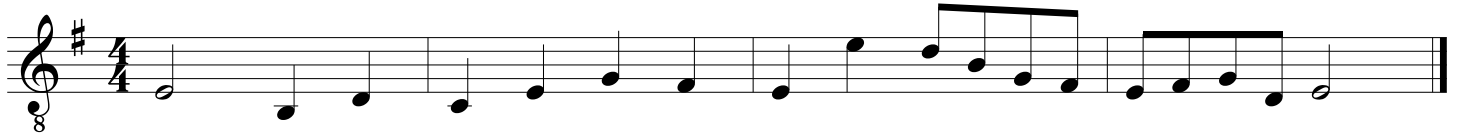
2006-07



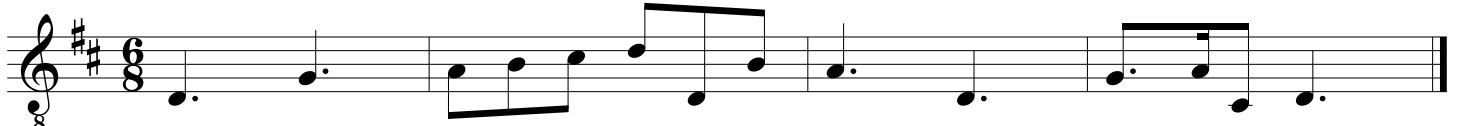
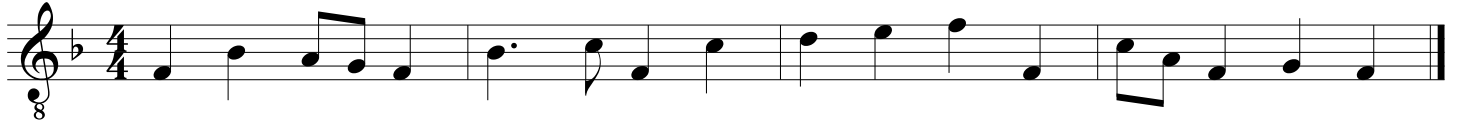
GMEA All State Chorus Sight Reading

11th-12th Grade Tenor

2007-08



2008-09



2009-10



GMEA All State Chorus Sight Reading

11th-12th Grade Tenor

2010-11



Three staves of musical notation for the 2010-11 piece. The first staff is in treble clef with a key signature of three sharps (F#, C#, G#) and a 4/4 time signature. The second staff is in treble clef with a key signature of one sharp (F#) and a 4/4 time signature. The third staff is in treble clef with a key signature of two flats (Bb, Eb) and a 6/8 time signature.

2011-12



Three staves of musical notation for the 2011-12 piece. The first staff is in treble clef with a key signature of two flats (Bb, Eb) and a 4/4 time signature. The second staff is in treble clef with a key signature of two flats (Bb, Eb) and a common time (C) signature. The third staff is in treble clef with a key signature of two flats (Bb, Eb) and a 6/8 time signature.

2012-13



Three staves of musical notation for the 2012-13 piece. The first staff is in treble clef with a key signature of three flats (Bb, Eb, Ab) and a 3/4 time signature. The second staff is in treble clef with a key signature of two flats (Bb, Eb) and a common time (C) signature. The third staff is in treble clef with a key signature of two flats (Bb, Eb) and a 6/8 time signature.

GMEA All State Chorus Sight Reading

11th-12th Grade Tenor

2013-14

Three staves of musical notation for the 2013-14 piece. The first staff is in treble clef with a key signature of three sharps (F#, C#, G#) and a 4/4 time signature. The second staff is in treble clef with a key signature of three flats (Bb, Eb, Ab) and a 4/4 time signature. The third staff is in treble clef with a key signature of three sharps (F#, C#, G#) and a 6/8 time signature.

2014-15

Three staves of musical notation for the 2014-15 piece. The first staff is in treble clef with a key signature of three flats (Bb, Eb, Ab) and a 3/4 time signature. The second staff is in treble clef with a key signature of one sharp (F#) and a 4/4 time signature. The third staff is in treble clef with a key signature of three flats (Bb, Eb, Ab) and a 6/8 time signature.

2015-16

Three staves of musical notation for the 2015-16 piece. The first staff is in treble clef with a key signature of one flat (Bb) and a 4/4 time signature. The second staff is in treble clef with a key signature of two flats (Bb, Eb) and a 4/4 time signature. The third staff is in treble clef with a key signature of two flats (Bb, Eb) and a 3/8 time signature.

GMEA All State Chorus Sight Reading

11th-12th Grade Tenor

2016-17

2016-17

The first piece consists of three staves of music. The first staff is in treble clef with a key signature of two sharps (F# and C#) and a 3/4 time signature. The second staff is in treble clef with a key signature of three sharps (F#, C#, and G#) and a 4/4 time signature. The third staff is in treble clef with a key signature of three flats (Bb, Eb, and Ab) and a 6/8 time signature.

2017-18

2017-18

The second piece consists of three staves of music. The first staff is in treble clef with a key signature of two flats (Bb and Eb) and a 3/2 time signature. The second staff is in treble clef with a key signature of four sharps (F#, C#, G#, and D#) and a 4/4 time signature. The third staff is in treble clef with a key signature of three flats (Bb, Eb, and Ab) and a 3/8 time signature.