



Marpo Kinetics, Inc.  
1306 Stealth Street, Suite A, Livermore, CA 94551  
www.marpofitness.com • Tel: (925) 606-6919 • Fax: (877) 275-1005

**- FUNCTIONAL TIRE TRAINER -**  
**IMPORTANT**  
**INFORMATION**  
**FOLLOW THESE INSTRUCTIONS**  
**TO SAFELY REMOVE THE PRODUCT**  
**FROM THE PACKAGE FOR INSTALLATION**

**FOR SAFETY REASONS**, TWO OR MORE PEOPLE MUST WORK TOGETHER TO PERFORM THE PACKAGE REMOVAL AND PRODUCT INSTALLATION PROCESS.

**IT IS BEST** THAT YOU AND YOUR BUILD PARTNER(S) PERFORM THE PACKAGE REMOVAL AND PRODUCT INSTALLATION PROCESS NEAR THE AREA WHERE THE FULLY ASSEMBLED PRODUCT WILL BE PLACED FOR USE. THIS WILL HELP ELIMINATE THE NEED TO MOVE THE FULLY ASSEMBLED PRODUCT. HOWEVER, SHOULD THE FULLY ASSEMBLED PRODUCT EVER NEED TO BE MOVED, TWO OR MORE PEOPLE MUST PERFORM THE MOVE TOGETHER TO AVOID INJURY.

**REMEMBER** TO ALWAYS KEEP ALL BODY PARTS AWAY FROM THE HUBS, SPROCKETS, AND ANY OTHER MOVING PARTS. THESE ELEMENTS CAN CAUSE SERIOUS INJURY.

**ADDITIONALLY**, MINORS SHOULD **NEVER** BE ALLOWED TO OPERATE THE PRODUCT WITHOUT THE CONSENT AND DIRECT SUPERVISION OF AN ADULT.



Marpo Kinetics, Inc.  
1306 Stealth Street, Suite A, Livermore, CA 94551  
www.marpofitness.com • Tel: (925) 606-6919 • Fax: (877) 275-1005

## PACKAGE REMOVAL AND INSTALLATION

1. Carefully remove all wrapping material from the outside of the product box. We recommend that you **DO NOT USE A BLADE** to cut through the wrapping material, as the use of a blade during this process may damage your tire trainer. **ALSO**, be careful not to cut through the red tape until it comes time to remove each item.
2. It is best to keep all items wrapped until fully assembled to prevent damage or scratches.

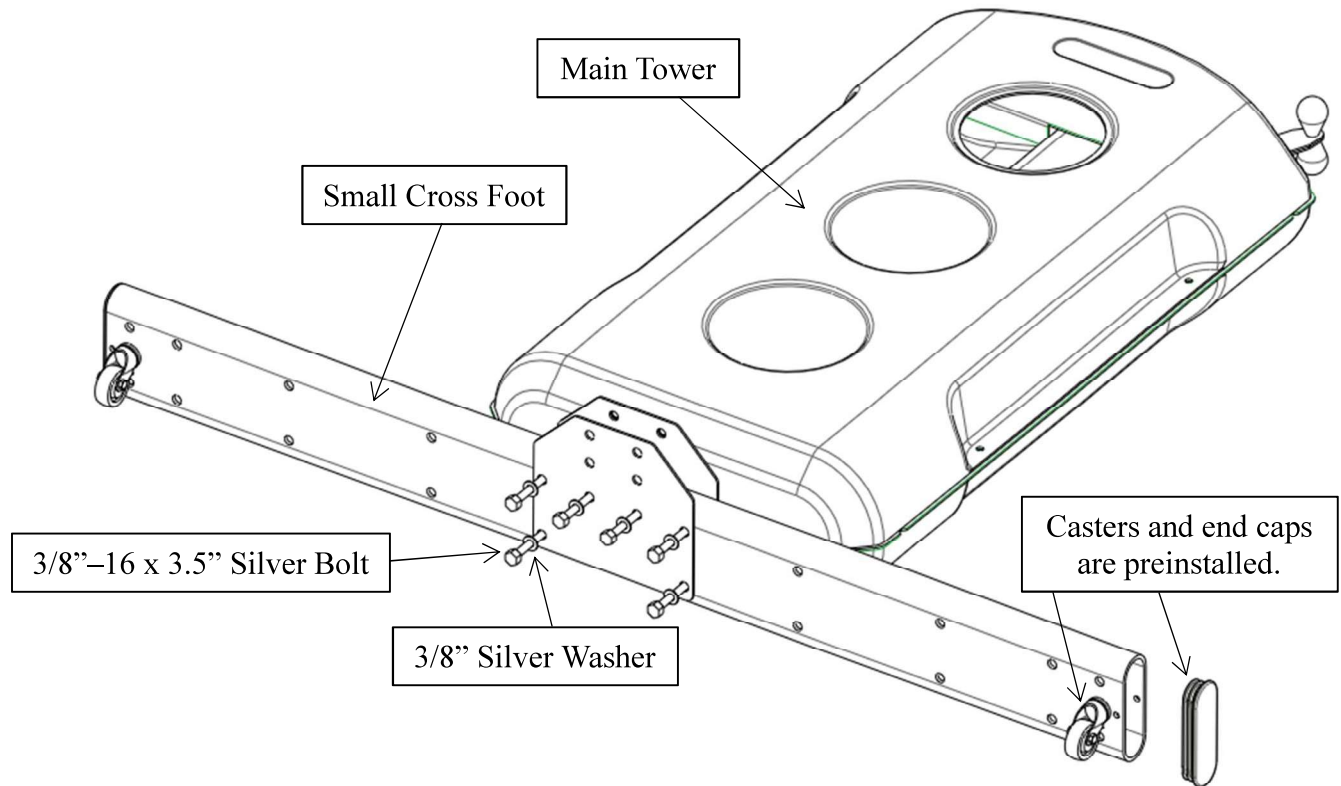
**The following items will be packaged together within the box:**

<b>Item Name</b>	<b>Amount</b>
Tire	1
Main Tower	1
Hub Tower	1
Large Cross Bar	1
Small Cross Feet	3
Tire Arms	2
Clamp Plate	2
User Manual	1
Hardware Envelope	1



Marpo Kinetics, Inc.  
1306 Stealth Street, Suite A, Livermore, CA 94551  
www.marpofitness.com • Tel: (925) 606-6919 • Fax: (877) 275-1005

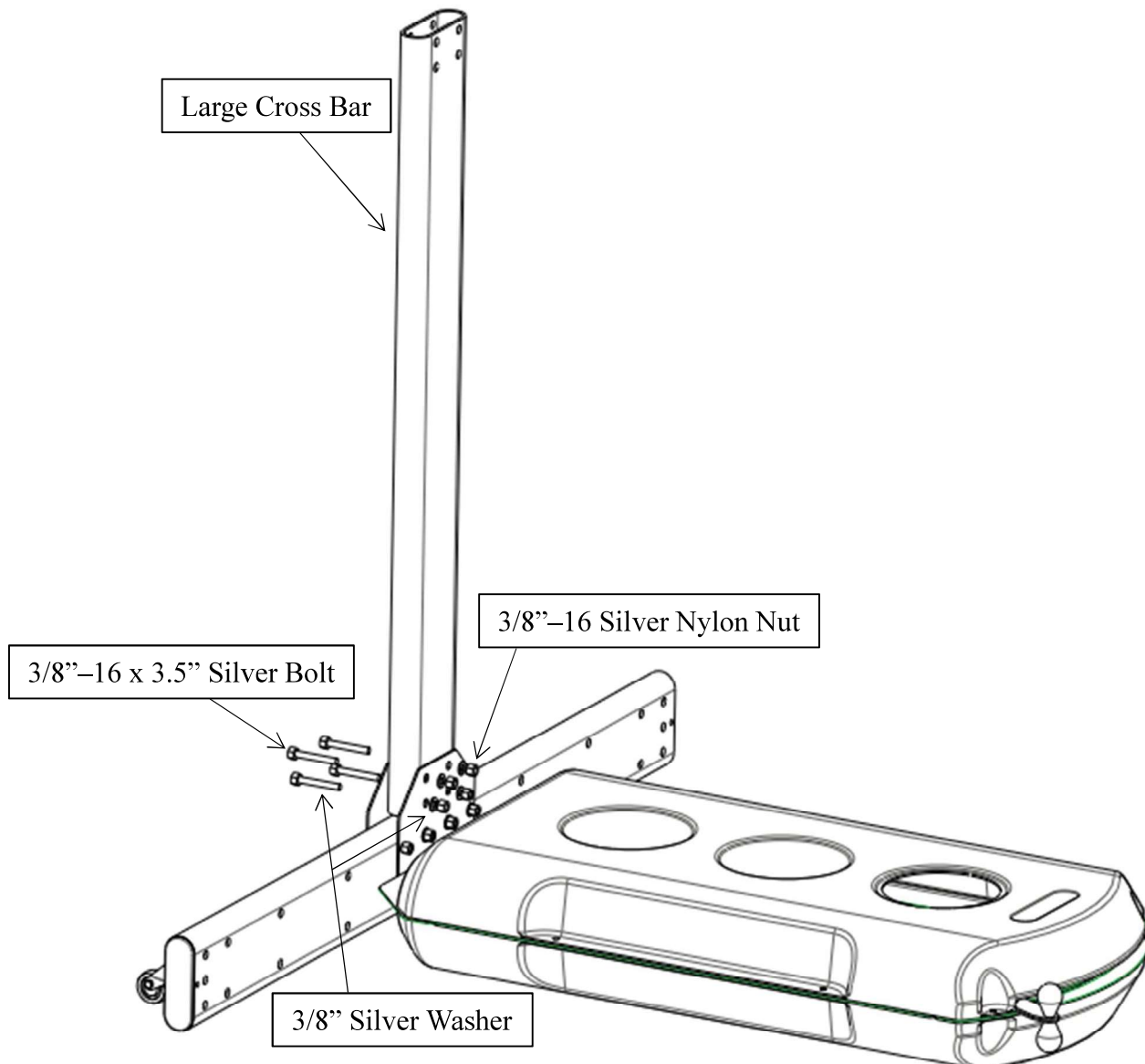
3. Place a large protective piece of cardboard on the floor. The lid of the product box works well.
4. Remove the HARDWARE ENVELOPE, two (2) SMALL CROSS FEET, and one (1) CLAMP PLATE from the product box. The two SMALL CROSS FEET should have red end caps on only one end, leaving the opposite end open.
5. **With the assistance of your build partner**, carefully remove the MAIN TOWER from the box and place it on the large protective piece of cardboard so that the back cover is resting on the cardboard and the hub access hole is facing upward.
6. Place the two (2) SMALL CROSS FEET against the base of the MAIN TOWER. The open ends of the SMALL CROSS FEET should touch. The MAIN TOWER should also align with the four center holes on the SMALL CROSS FEET.
7. Attach the MAIN TOWER, SMALL CROSS FEET, and CLAMP PLATE together using the hardware from Bag A: six (6) of the included 3/8"-16 x 3.5" silver bolts, twelve (12) 3/8" silver washers, and six (6) 3/8" silver nylon nuts. The bolts should be installed from the bottom up so that the nuts are on top of the MAIN TOWER base. Only partially tighten these bolts for now.





Marpo Kinetics, Inc.  
1306 Stealth Street, Suite A, Livermore, CA 94551  
www.marpofitness.com • Tel: (925) 606-6919 • Fax: (877) 275-1005

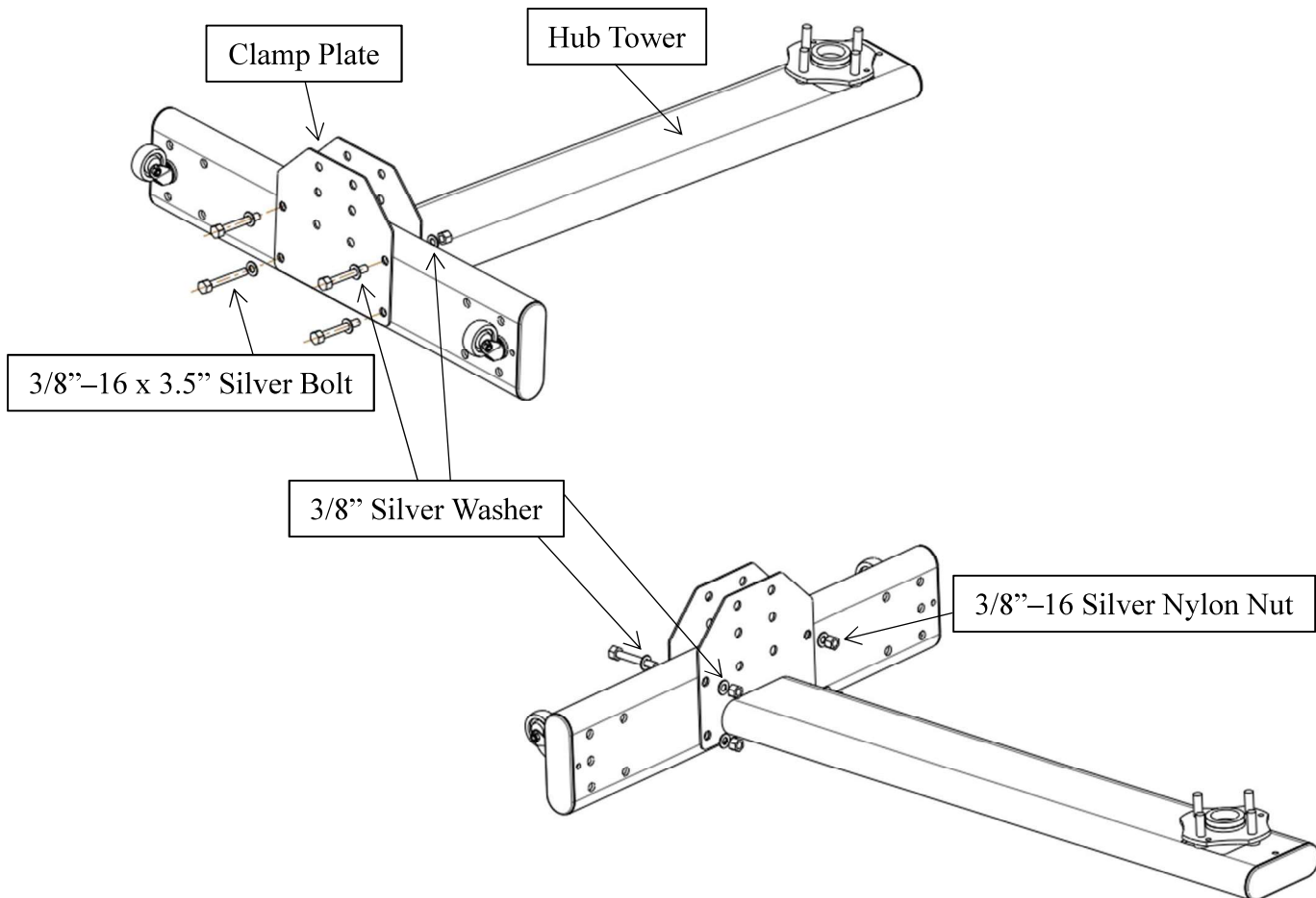
8. **With the assistance of your build partner**, install one end of the LARGE CROSS BAR by sliding it between the base of the MAIN TOWER and the feet of the SMALL CROSS FEET so that the LARGE CROSS BAR is pointing upward. The install requires the hardware found in Bag A: four (4) of the included 3/8"-16 x 3.5" silver bolts, eight (8) 3/8" silver washers, and four (4) 3/8" silver nylon nuts.
9. The LARGE CROSS BAR should be flush against the surface of the SMALL CROSS FEET. Once this is done, fully tighten all 10 bolts connected to the MAIN TOWER.





Marpo Kinetics, Inc.  
1306 Stealth Street, Suite A, Livermore, CA 94551  
www.marpofitness.com • Tel: (925) 606-6919 • Fax: (877) 275-1005

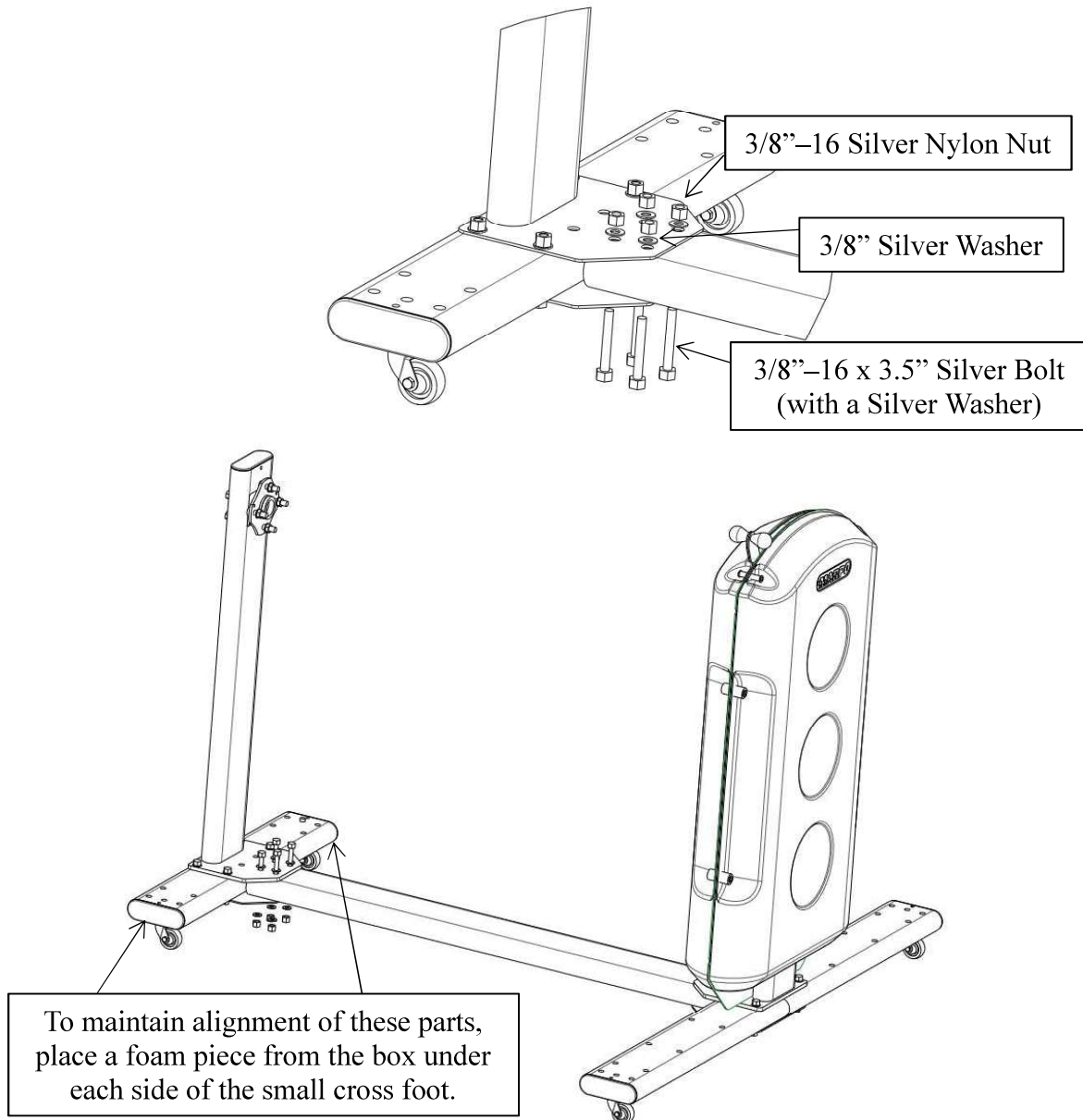
10. Remove the HUB TOWER from the box and place it on the cardboard with the protruding end of the HUB TOWER base facing up. Remove the third SMALL CROSS FOOT with two (2) CASTER FEET and one (1) CLAMP PLATE from the box.
11. Place the SMALL CROSS FOOT against the base of the SMALL HUB TOWER. The SMALL HUB TOWER should align with the four center holes on the SMALL CROSS FOOT.
12. Attach the CLAMP PLATE, HUB TOWER, and SMALL CROSS FOOT together using the hardware found in Bag A: four (4) of the included 3/8"-16 x 3.5" silver bolts, eight (8) 3/8" silver washers, and four (4) 3/8" silver nylon nuts. The bolts should be installed so that the nuts are on top of the HUB TOWER base. Only partially tighten these bolts for now.





Marpo Kinetics, Inc.  
1306 Stealth Street, Suite A, Livermore, CA 94551  
www.marpofitness.com • Tel: (925) 606-6919 • Fax: (877) 275-1005

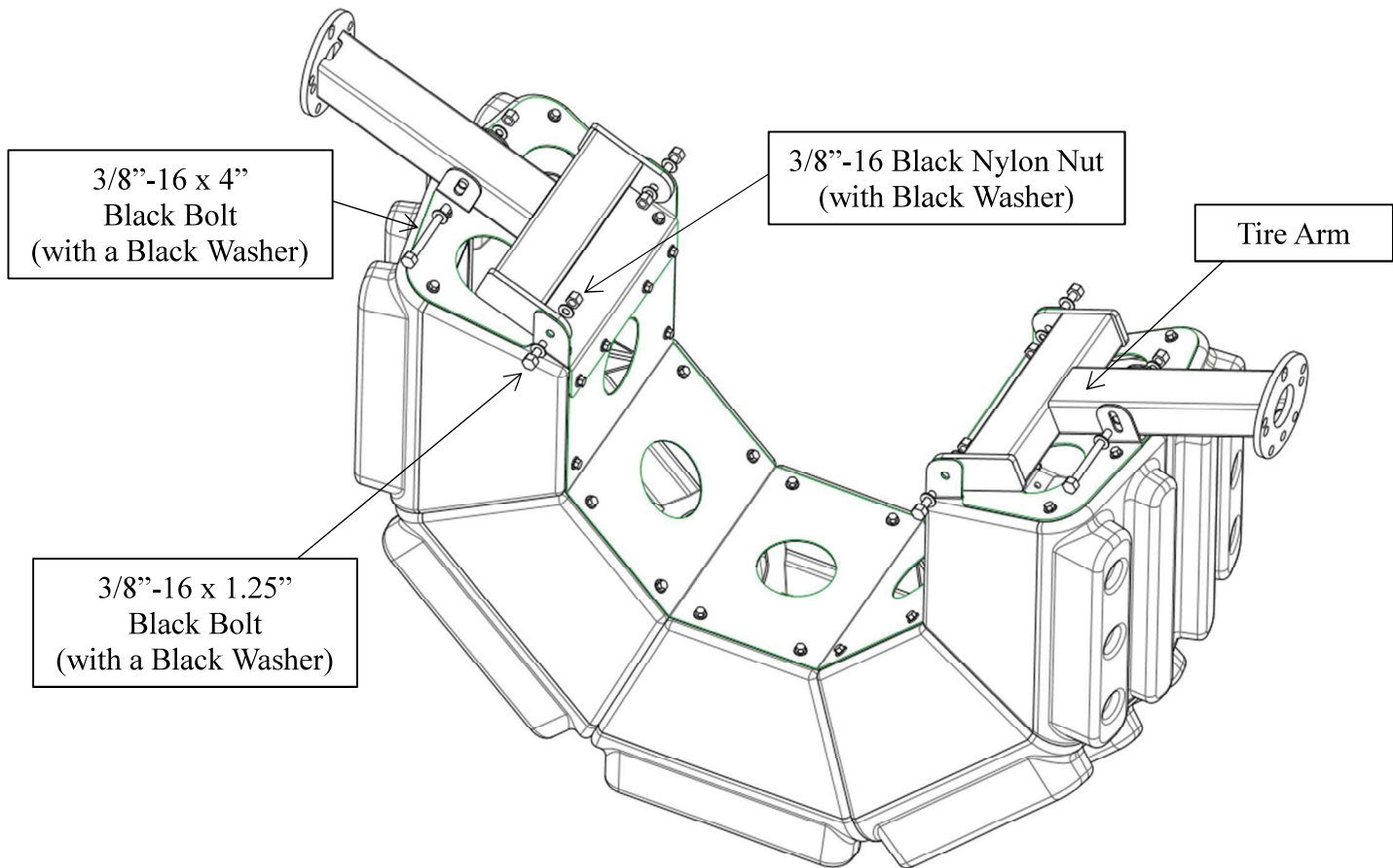
13. **With the assistance of your build partner**, slide the base of the HUB TOWER and CLAMP PLATE over the open end of the LARGE CROSS BAR. The install requires the hardware from Bag A: four (4) of the included 3/8"-16 x 3.5" silver bolts, eight (8) 3/8" silver washers, and four (4) 3/8" silver nylon nuts. The bolts should be installed so that the nuts are on top of the HUB TOWER base. Only tighten these bolts about 75% of the way. Two pieces of foam from the box can be used under the SMALL CROSS FOOT to maintain hole alignment while installing the bolts.





Marpo Kinetics, Inc.  
1306 Stealth Street, Suite A, Livermore, CA 94551  
www.marpofitness.com • Tel: (925) 606-6919 • Fax: (877) 275-1005

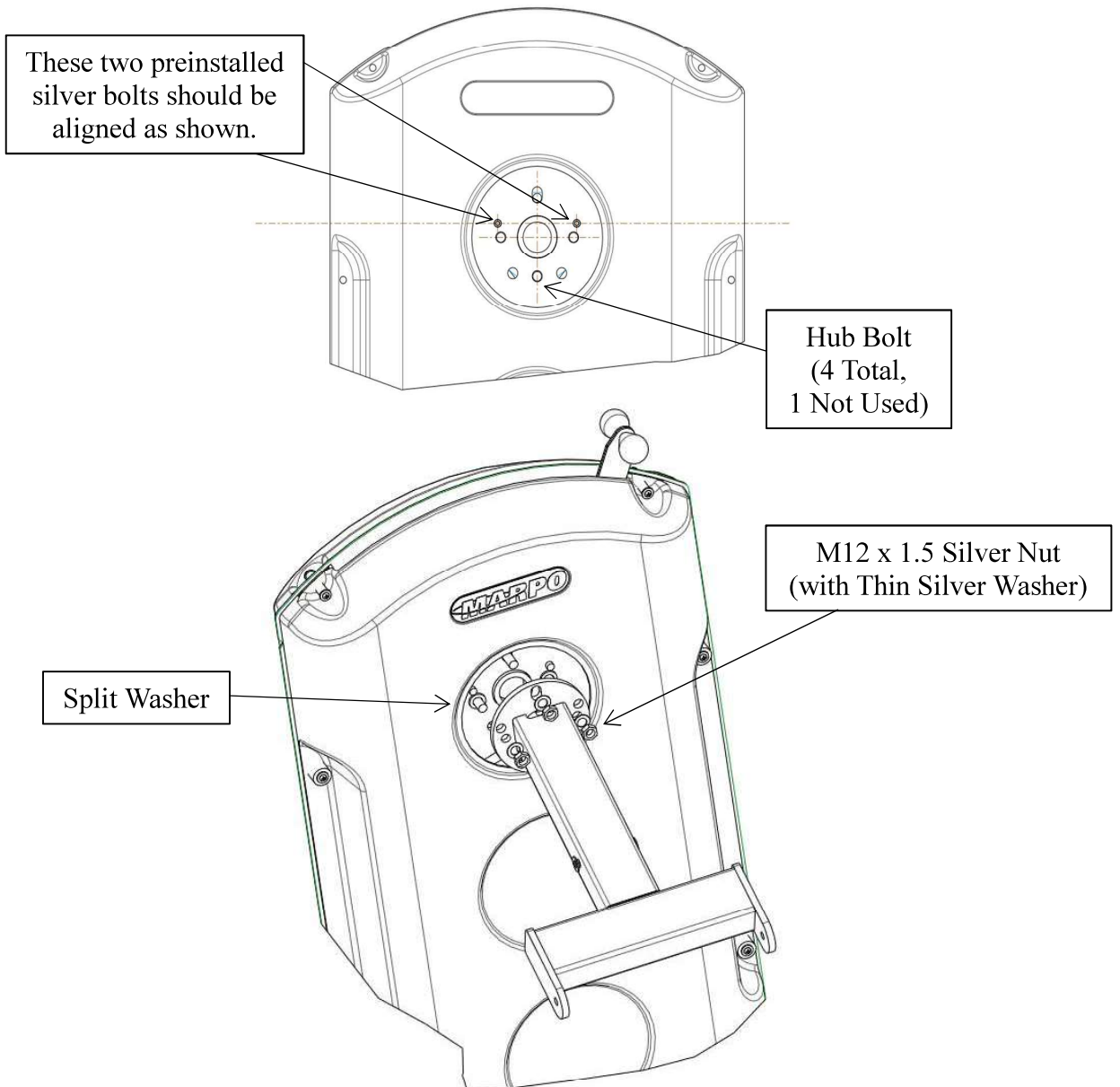
14. **With the assistance of your build partner**, remove the TIRE and one TIRE ARM from the box. Attach one TIRE ARM to an end cap of the TIRE using the hardware from Bag B: one (1) 3/8"-16 x 4" black bolt, two (2) 3/8"-16 x 1.25" black bolt, six (6) 3/8" black washers, and one (1) 3/8" black nylon nut. Only tighten these bolts 75% of the way. **The below image is of a complete tire. Please see Step 15.**





Marpo Kinetics, Inc.  
1306 Stealth Street, Suite A, Livermore, CA 94551  
www.marpofitness.com • Tel: (925) 606-6919 • Fax: (877) 275-1005

15. **With the assistance of your build partner**, carefully attach one (1) TIRE ARM to the MAIN TOWER with the four (4) M12 x 15 silver nuts, thin silver washers, and split washers found in Bag C. Be mindful of the plastic cover and tight clearances. The hub inside the round cut of the plastic cover may need to be rotated by hand to properly align with the TIRE ARM as shown below. Attach the standalone TIRE ARM to an end cap of the TIRE using the hardware from Bag B: one (1) 3/8"-16 x 4" black bolt, two (2) 3.8"-16 x 1.25" black bolt, six (6) 3/8" black washers, and one (1) 3/8" black nylon nut. Only tighten these bolts 75% of the way.

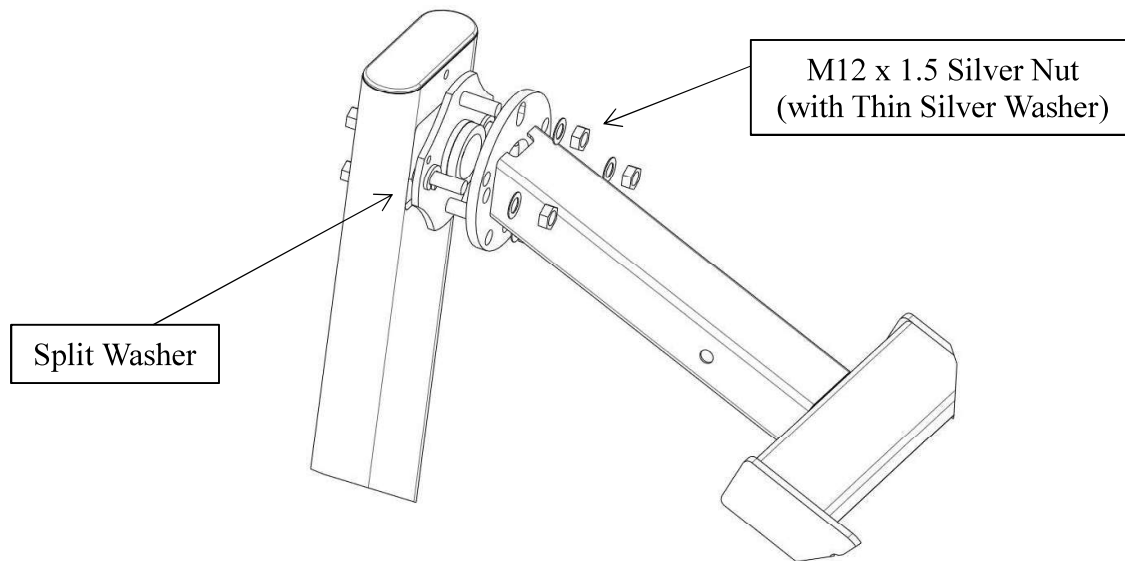






Marpo Kinetics, Inc.  
1306 Stealth Street, Suite A, Livermore, CA 94551  
www.marpofitness.com • Tel: (925) 606-6919 • Fax: (877) 275-1005

16. **With the assistance of your build partner**, carefully lift one end of the TIRE and TIRE ARM assembly onto the hub bolts of the HUB TOWER. The hub may need to be rotated to properly align with the TIRE ARM. Attach the TIRE ARM to the HUB TOWER using a flat wrench and the four (4) M12 x 1.5 nuts and washers that have already been installed on the HUB TOWER. **The two (2) split washers should be placed behind the round plate of the TIRE ARM. Be sure to tighten the top nut all the way first and then tighten the two (2) side nuts until the split washers are fully flattened.** At this time, you should also fully tighten the 3/8" – 16 x 4" Black Bolts inserted through the middle of both TIRE ARMS.



17. Ensure each bolt is fully tightened. Adjust and/or lock all CASTER FEET as needed to ensure the unit is stable and does not rock.

**Enjoy your Marpo Functional Tire Trainer!**