



# Oakland Planning and Development Corporation

---

## Stormwater Management Update

---

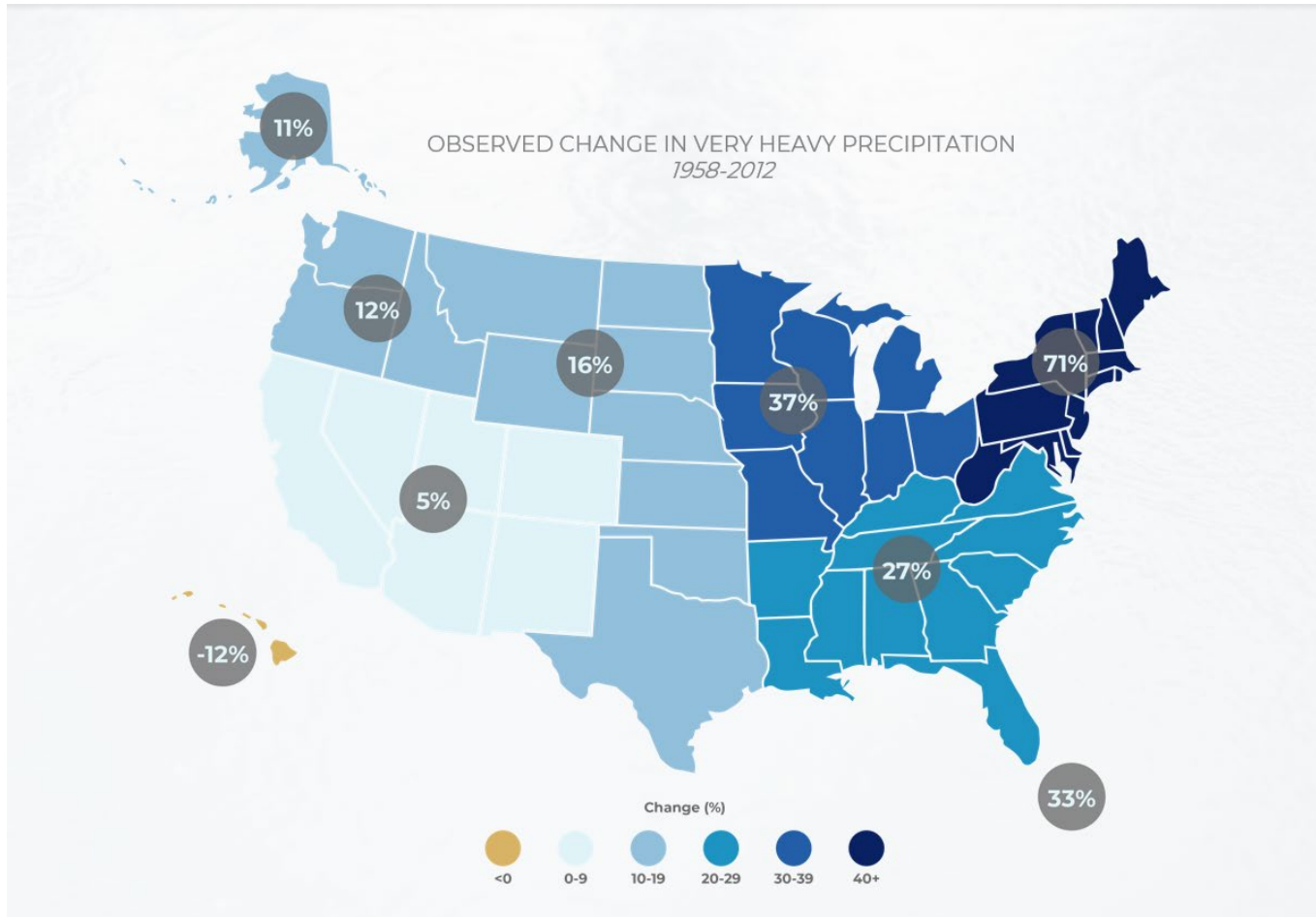
*August 31, 2021*

A large, solid green circle is positioned on the left side of the slide, partially overlapping the white background. The text 'PWSA's Stormwater Story' is written in white, sans-serif font inside this circle.

# PWSA's Stormwater Story

- Why Stormwater Matters
- The Problem PWSA is Trying to Solve
- PWSA's Solution





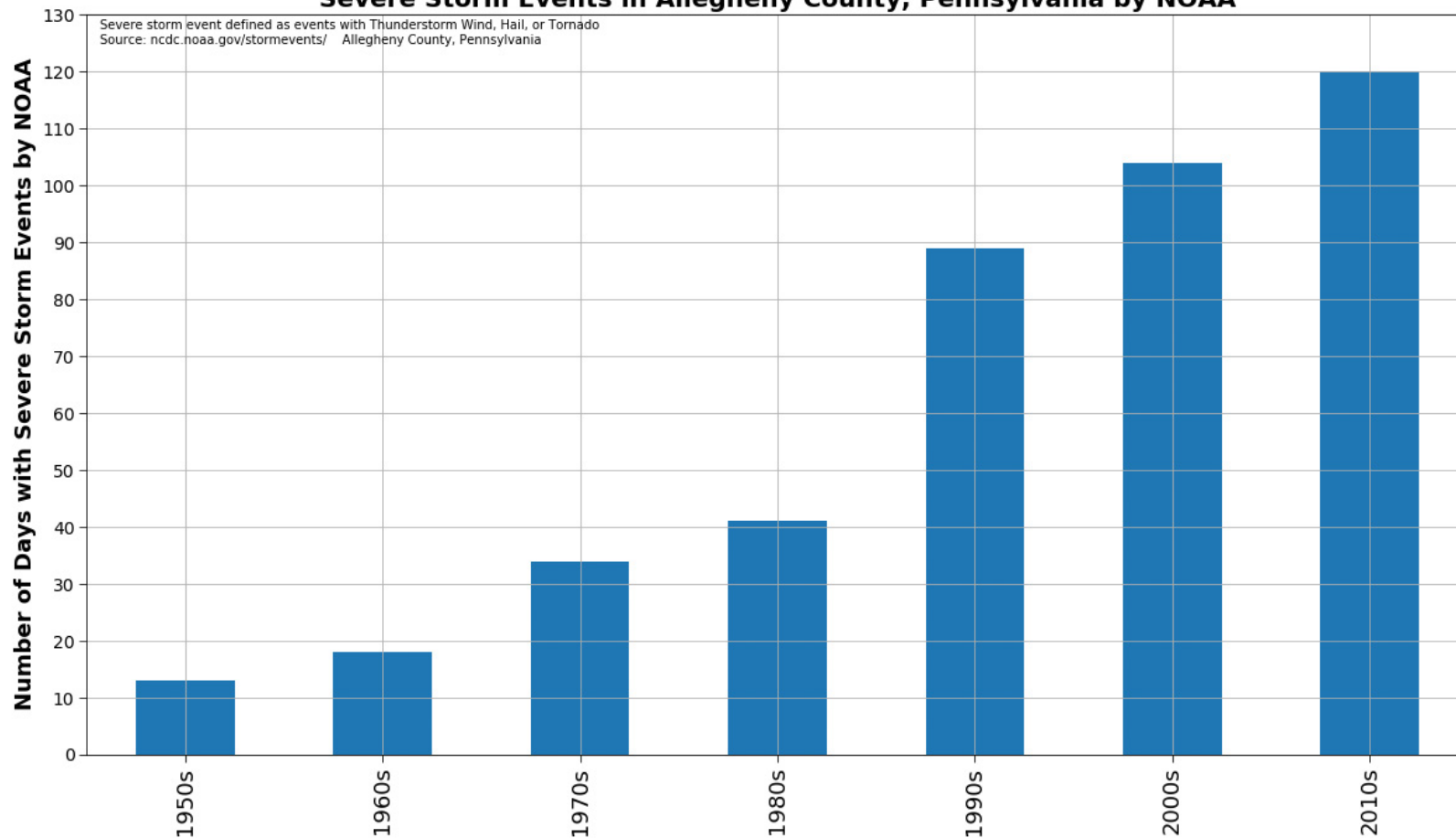
The Northeast  
and Pittsburgh  
are getting much  
more rain now  
than we used to

# What is stormwater and why does it matter


- Today, Pittsburgh averages 38 inches of rain a year.
- Severe, highly-localized storms frequently overrun the sewer system and treatment capacity.



### Severe Storm Events in Allegheny County, Pennsylvania by NOAA



Occurrences of severe storms have increased dramatically in Allegheny County.



# Too much stormwater + sewer water = pollution in our rivers

---

It doesn't take much to overflow the system – it can happen with just an inch of rainfall or less.







# Our system was not built for this volume of stormwater


- We have more pavement and hard surfaces than we did 100 years ago
- We have more rain, and localized severe storms, than the system is built to handle
- Previously, Pittsburgh has not had a unified stormwater strategy





# PWSA is stepping up

To tackle our stormwater challenges, PWSA is building an innovative stormwater management system, designed to absorb or redirect as much rainwater as possible *before* it enters our overburdened sewer system.





# Projects like Centre and Herron will transform stormwater management

- Designed to capture and hold excess runoff before it runs into a river
- Also beautifies a neighborhood





# To change how we manage stormwater, we will also change how we bill for stormwater

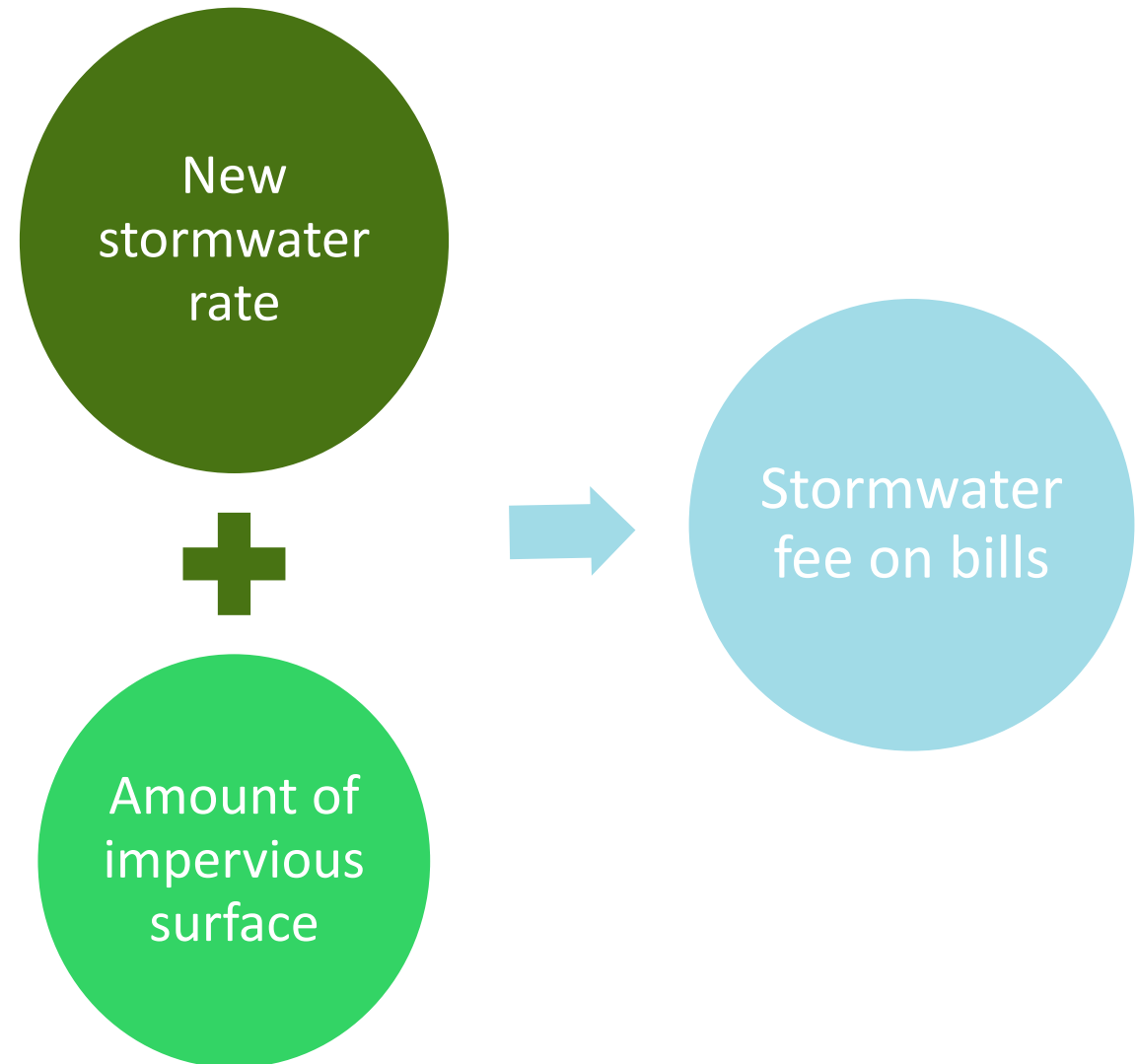
Right now, PWSA is charging every customer based on how much drinking water they use. That meter reading determines drinking and wastewater rates



# Starting in 2022, stormwater will be billed differently

## Pending PUC approval

- Every parcel in Pittsburgh has been mapped
- Even if a parcel has no water meter, it will be eligible to pay a stormwater bill to PWSA
- This will be more fair and equitable than billing by meter usage



# Rates will be based on an “ERU”

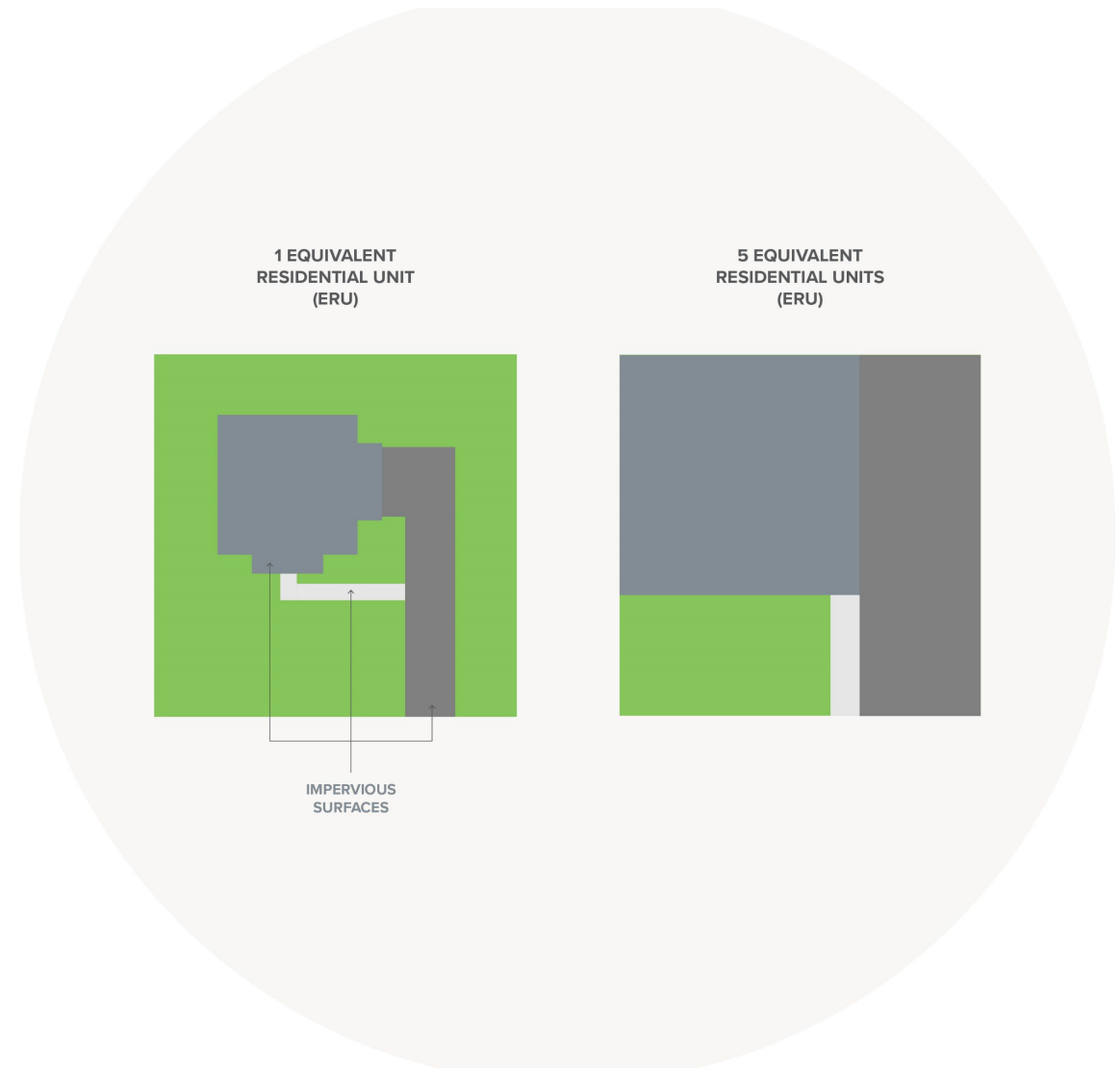
PWSA determined three tiers for all residential properties in Pittsburgh:

- Tier 1 = 400 sq ft – 1,015 sq ft
- **Tier 2 = 1,015 sq ft – 2,710 sq ft**

**Over 70% of PGH residential properties will be Tier 2. This size is our base rate, or Equivalent Residential Unit “ERU”**

- Tier 3 = 2,710 sq ft+

*All non-residential units will be based on ERU. If a parking lot is 5 ERUs, the parking lot’s stormwater bill will be 5x the approved ERU rate.*



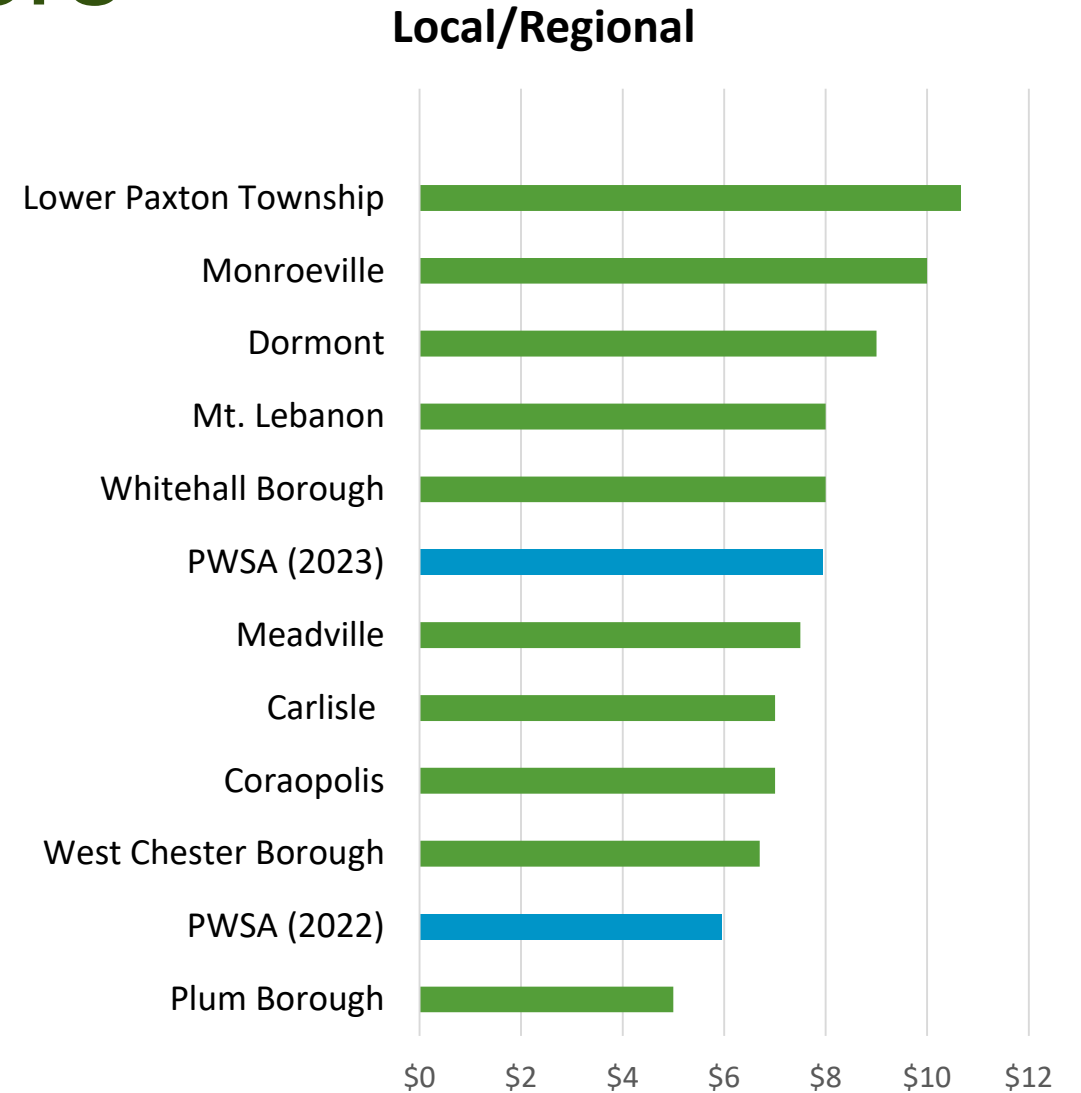
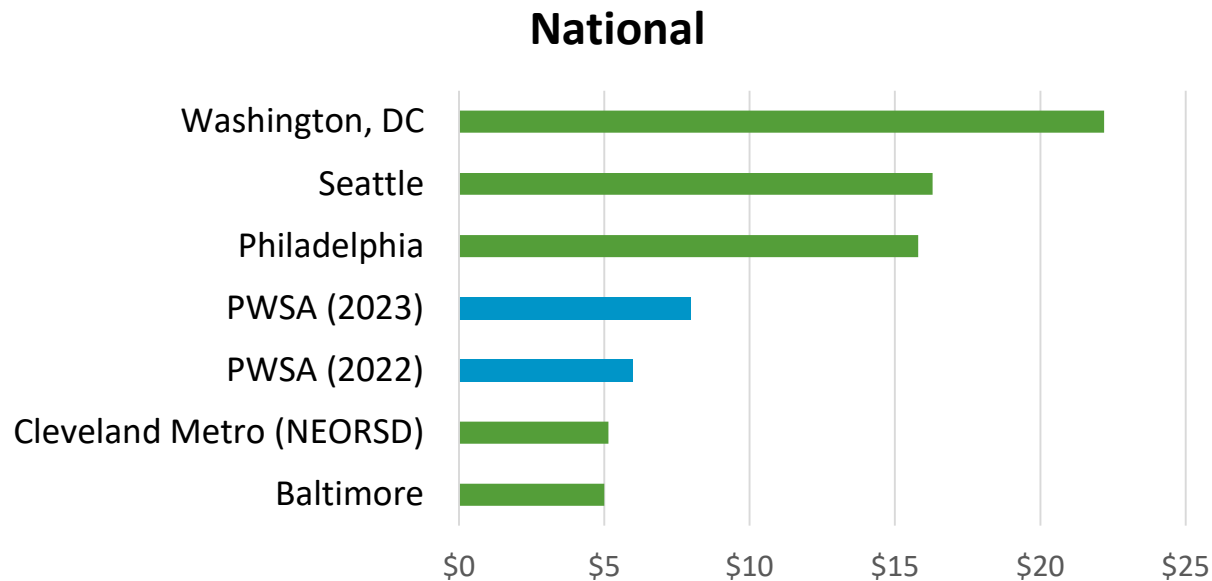
# Proposed Stormwater Rates


<b>Stormwater Customer Categories</b>	<b>ERUs</b>	<b>Monthly Rate 2022</b>	<b>Monthly Rate 2023</b>
Residential Tier I (≥400 sf. to <1,015 sf.)	.5	\$2.99	\$3.98
Residential Tier II (≥1,015 sf. to 2,710 sf.)	1	\$5.96	\$7.95
Residential Tier III (≥2,710 sf.)	2	\$11.93	\$15.90
Non-residential	Per ERU	\$5.96	\$7.95

# Understanding Our Peers

## Monthly Stormwater Fees (per ERU)

- All stormwater programs are different
- Unique operational, infrastructure, climate, and funding challenges
- Locally and nationally, fees vary significantly





# Payoff: Fewer basement backups, less pollution= healthier and better Pittsburgh

---

By changing how PWSA charges for stormwater, we can **over time** improve how we manage stormwater and provide multiple benefits





# PWSA's Stormwater Master Planning

- Pittsburgh's blueprint to address local stormwater challenges.
- Project team led by PennPraxis and the Water Center at the University of Pennsylvania. Final plan in June 2021.
- Public engagement of a diverse group of residents, ratepayers and stakeholders through meetings with established community organizations that can convey the community issues and needs.
- Special attention to those most impacted by stormwater issues such as flooding and basement backups, and Environmental Justice areas.

For more information – Stormwater Master Plan FAQs-

[www.pgh2o.com/stormwater-master-plan-faq](http://www.pgh2o.com/stormwater-master-plan-faq)



# Reporting Basement Backups and Flooding

---

- *Call PWSA's 24/7 Emergency Dispatch (412) 255-2423*
- *Call City's 311*
- *Report using myburgh app:  
<https://pittsburghpa.gov/311/myburgh>*







For more  
information,  
please visit

---

[www.pgh2ostormwater.com](http://www.pgh2ostormwater.com)





Thank you

Questions? Comments?

PWSA appreciates our customers  
and your feedback

---

For questions or comments about the  
PWSA Stormwater Plan please contact  
Beth Dutton, Sr. Project Manager,  
Stormwater, [bdutton@pgh2o.com](mailto:bdutton@pgh2o.com)

