



HAZELDEAN

LITCHFIELD

EST 1865



Hazeldean New England Bull Sale

68 Performance Bulls

Wednesday 14th August, Bective Station,
Tamworth, NSW

**NEW
VENUE!**

2024



HAZELDEAN
LITCHFIELD
EST 1865

Hazeldean New England Bull Sale 2024

We welcome you to our New England Bull Sale. Our catalogue is comprehensive and detailed providing you with as much detail as possible to aid your selection. Photos and videos will be available on AuctionsPlus and inspections welcome at any time.

- ★ Super sound, very fertile, superior carcass
 - ★ Featuring sons of breed leading Hazeldean sires
 - ★ Exceptional temperaments and easy to handle
 - ★ Free delivery NSW
-



Hazeldean New England Bull Sale

****NEW LOCATION - BECTIVE STATION 2684 OXLEY HWY, TAMWORTH****

68 Performance Bulls

Wednesday 14th August 2024

Commencing at 1pm

Inspection from 10.30am on sale day

Enquiries:

Ed Bradley: 0412 298 546

Bea Litchfield: 0427 933 103

Hazeldean Office: 0428 314 838

admin@hazeldean.com.au

Selling Agents:

Nutrien Boultons Walcha

Mathew Larkings 0427 002 427

Simon Newton 0467 660 320

Nutrien Ag Solutions Tamworth

Joel Fleming 0467 725 195

Tim Hollis 0409 227 185

Nutrien Studstock NSW

Matt Champion 0437 290 435

Phone Bidding

Mat Larkings 0427 002 427



Account: Hazeldean Pty Ltd

ACN 000 012 760

ABN 33 000 012 760

Bull Deliveries

Hazeldean will arrange delivery of your bulls free of charge to the purchaser's property within NSW. For purchasers outside NSW bulls will be delivered to the closest major centre.

Catering

Lunch will be available prior to sale

We welcome you to stay on after the sale for refreshments.

Agent Rebate

A 2% rebate is offered to outside agents attending the sale to introduce and assist buyers.

To qualify, agents must:

- **Introduce the client in writing by email 12 hours prior to the sale;**
admin@hazeldean.com.au
- **attend the sale with the client**



SALE WILL BE INTERFACED WITH STOCKLIVE ELITE

Videos & photos on-line 10 days prior to sale plus final weights at:

www.hazeldean.com.au & www.stocklive.com.au

**Register on-line prior to the sale @ www.hazeldean.com.au
and we will have your bid card ready for you on the day**

Sale Day Safety

Visitors enter the pens at their own risk. Children under 16 years are not permitted to enter the pens unless supervised at all times.

All care is taken to ensure livestock pose minimum threat to us and our clients. However, we cannot predict nor guarantee their behaviour. All sale bulls have been assessed for temperament and are quiet to handle under normal circumstances. Sale day places bulls under stresses that are foreign to their normal routine. They are not used to having a crowd of people around them and so the behaviour of even the quietest bull under normal circumstances can be unpredictable. Bulls may also fight in the pens and at these times they are oblivious to people who may be in their way. Do not put pressure on the bulls in the yards and do not enter the yards unless you need to. If you would like assistance with inspections, please ask any Hazeldean staff member or agent assisting with the sale.

Be sure of a catalogue – Bring this one with you

Disclaimer All reasonable care has been taken to ensure the information in this catalogue is correct at time of publication. The vendor makes no other representations about the accuracy, reliability or completeness of the information provided and does not assume any responsibility for the use or interpretation of the information.

HOW TO REGISTER with



STOCKLIVE ELITE

Follow these easy steps to start bidding:



● Visit www.stocklive.com.au using your desktop, laptop, iPad, iPhone or Android device. NO App required.



● Select the **bid** icon beside the sale you wish to bid on.



● If you're new, select **register**, and complete the form with all your details, **accept sale conditions**, select **create bidder registration**.



● You will receive an email from StockLive. Select "**Confirm my bidding account**" to set your password and **accept** Bidder Account Terms & Conditions and Privacy Policy followed by **create my account**.



● Congratulations! Your StockLive account has been created and your bid request is pending. You will be notified via email when your request to bid has been approved.



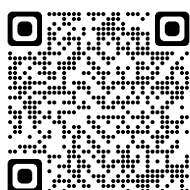
● Existing users, follow steps 1 & 2, select login, enter your details followed by the **request to bid** icon beside the sale you wish to bid on and then **accept** the terms.



● On Sale Day, follow steps 1 & 2, select **enter auction** to watch, listen and purchase when the sale is flashing **LIVE**.



● Invoicing and delivery will be carried out as per your registration details by the respective Selling Agents.



1300 259 742

support@stocklive.com.au

www.stocklive.com.au



Welcome to Hazeldean

Welcome to the Hazeldean Angus New England Bull Sale at Bective Station

Dear Cattle Breeders,

We are excited to welcome you to the Hazeldean Angus New England Bull Sale, which this year will be held at Bective Station. This new venue marks an exciting chapter in our support of the New England market and we look forward to hosting you there this year.

Our move to Bective Station is driven by our goal to provide you with the best possible environment to experience our bulls. Bective Station's facilities ensure a comfortable and enjoyable experience, offering the perfect setting to display our top quality bulls to you. Bulls will be available for inspection on sale day with the opportunity to walk through them in the inspection pens. Bulls will then be sold via auction with videos displayed of each lot rather than each bull being physically put through the ring.

This year, we are proud to present a team of bulls that exemplify the superior genetics, robust phenotype, and exceptional performance that Hazeldean Angus is known for. We understand the importance of investing in bulls that will positively impact your breeding program and herd profitability. Each bull has been bred to meet the highest standards of quality, ensuring they bring significant value to your herd. Our bulls are a testament to our dedication to excellence, combining desirable traits of fertility, growth, carcase, docility and functionality. This year's team has a strong IMF component with the average of the team being in the top 35th percentile of the breed.

As you explore the catalogue for this year, we hope you find bulls that meet your needs and aspirations. Our team is here to assist you and provide any information you require, ensuring you have all the support necessary to make informed decisions so please get in touch.

Thank you for considering us and our sale at Bective Station. We extend our gratitude to you for your ongoing support for our program at Hazeldean Angus.

Warm regards,

Bea Litchfield, Ed Bradley, Jim and Libby Litchfield and the Hazeldean team.

Proven Genetic Performance

SELECT from a herd bred under commercial conditions.

Hazeldean cattle are bred under commercial conditions and share their paddocks with sheep. The main breeding herd is located in the foothills of the Snowy Mountains with long cold winters, severe frost and a late spring. Hazeldean females are expected to re-breed before the Spring flush and as such are selected for high fertility under low nutrition levels. They are well-known for their hardiness and ability to thrive. Their hardiness suits northern conditions also where animals must work in the heat and be capable of storing energy quickly as body fat and not fall in a heap after calving. With experience in the south and the north we know these are the sort of cattle that will perform in both environments.

INVEST in a cow herd with TRUE depth of breeding

The bulls bred at Hazeldean come from a 3500 strong female herd with unequalled depth of breeding spanning 60 years. Hazeldean cattle breed true to type and reflect their breeding heritage with uniform high performing calves that achieve premiums in all markets.

BOOST your herd's fertility

Hazeldean Angus are renowned for high fertility, and good mothering to give consistent and superior reproductive performance. Selection pressure on females to breed a live calf every year from 2 years of age is strict and any female who fails to do so for any reason is "out".

ACHIEVE higher prices at the saleyards.

Hazeldean blood animals command higher prices at market and are sought after by feedlotter and backgrounders.



Hazeldean Breeding and Management

Established in 1927, Hazeldean Angus is part of Hazeldean Pty Ltd, a pastoral enterprise owned and operated by the Litchfield family of Cooma, NSW since 1865. Hazeldean provides the beef industry with large numbers of high quality, high performing stud and commercial Angus bulls. Seedstock and commercial beef production has been Hazeldean's business for over 150 years. The company understands genetics and what's important to run a successful commercial beef cattle operation.

The Hazeldean herd consists of 3500 commercial, APR and stud cattle, which are bred and grazed on the Monaro in southern NSW. Hazeldean cattle are renowned as being "good doing", hardy cattle that will thrive in any climate. The female herd has a reputation of exceptional fertility, lower than average birth weights, excellent calving ease, teamed with high growth and above average carcass.

Hazeldean's core business is providing functional, profitable bulls to the commercial beef industry and this means first of all maximizing the number of pregnancies and the number of live calves hitting the ground, building on that base rapid growth rates and on top of that superior carcass data. This is the basis of any successful breeding enterprise.

Hazeldean selects for quiet temperament in their breeding program and sire selection and their cattle have an enviable reputation of being exceptionally quiet and easy to manage. This shows in the docility EBV's of Hazeldean cattle. Temperament is highly heritable, it affects carcass quality, growth rate, and handling – any animal that shows bad temperament is culled.

Stud & Performance History

The Hazeldean Angus herd was established in 1927, replacing a herd of primarily shorthorn cattle that had run on the property for many years. In 1952 the stud was founded with the purchase of in-calf heifers from six New Zealand studs. These heifers were specially selected for scale, length and docile temperament – traits that still remain important to the stud 60 years later. As the commercial herd was of a very high standard and as a means to fully utilize the foundation sire "Wallah Ottoman", a selection of top grade commercial females were selected to join the bull-producing herd. The strength of the Hazeldean herd has always been its ability to produce large numbers of high performing bulls with emphasis always on commercial reality.

In 1960 Hazeldean became one of the first beef seedstock producers anywhere in the world to embrace the concept of Performance testing and has continued to use accurate measured production in its selection and breeding programmes ever since. Hazeldean was the first beef herd in Australia to trial Breedplan and was later chosen as the site of the national launch in 1985. Hazeldean Angus is involved in carcass and feedlot performance trials and sire progeny testing programmes to identify the leading sires for profitability to the industry.

Bull Sales Around 500 bulls are sold each year by auction at selling centres located at "Hazeldean", Cooma, NSW (May & Sept), Drillham QLD (August) and Tamworth, NSW (August).

Female Sales Commercial females and select registered females are sold on-property at Hazeldean's annual Female Sale at Cooma in May.

Semen Sales Semen is available from Hazeldean's top sires. Contact Hazeldean or view our website www.hazeldean.com.au



Hazeldean Breeding and Management

Management & Breeding Programme

The Hazeldean properties are extensive grazing properties suited to commercial beef production. The Hazeldean herd is run under strict commercial conditions with stud cows sharing their paddocks with sheep and only receiving supplementary feeding in drought. Hazeldean sources the most proven and high performing Angus sires and multiplies these genetics throughout the herd using their comprehensive (AI) and (ET) programme. Elite Hazeldean cows are flushed and used as donors in the ET programme.

The provision of bulls by a seedstock breeder to a commercial breeder must do five things. They are, in order of importance, as follows:

1. Serve cows effectively and efficiently so that the number of pregnancies in your herd is as high as it can be over a 6 week joining.
2. Produce daughters that are fertile at an early age, able to calve unassisted at 2 years of age and breed back every year thereafter.
3. Sire calves that grow quickly to reach maximum liveweight at the turnoff time targeted by the breeder.
4. Have sufficient constitution and athleticism to survive and breed effectively for a number of years.
5. Sire calves with valuable carcasses that maximise returns to the breeder and the processor for each kilogram of beef produced.

It is vital that these targets are met in this order for beef producers to make money out of beef cattle and this is the focus of the Hazeldean program.



Purchasing a bull from Hazeldean

Health Check All sale bulls are thoroughly assessed by a bull fertility technician prior to the sale. Animals displaying faults that are likely to interfere with a normal productive life are culled.

The Hazeldean herd has JBAS8 status.

Bulls are vaccinated for Pestivirus, Vibriosis and 7 in 1

Fertility Although sale bulls are vet checked immediately prior to sale day, which includes a full examination of reproductive organs, we recommend that you organize a pre-mating bull examination at least 6 weeks prior to joining to ensure that your bulls are in the best of health and capable of producing pregnancies. The procedure should include a serving ability test where the bull is observed serving a cow or heifer.

Hazeldean has an uncompromising approach to structural assessment All Hazeldean bulls and females are annually assessed and those failing the assessment are culled. Before cataloguing, each animal is inspected by an independent assessor to ensure a high standard of structural correctness, particularly with regard to conformation, shoulders, legs and feet. (See beef class structural assessment system). Only animals that pass this rigorous inspection are entered for sale. No animal has received treatment to their feet.

Bulls are freeze-branded on the near side rump with the Hazeldean brand and their number.



Semen Terms & Conditions Hazeldean retains semen rights on all bulls unless otherwise agreed upon, according to Hazeldean Semen Terms and Conditions.

See full Terms and Conditions at the back of the catalogue.

Our Guarantee and Replacements, Refunds, Credits

Although we do our very best to ensure every bull we catalogue sees out many years of good service, occasionally premature breakdowns occur. In this event we guarantee unconditionally all bulls for 12 months from purchase and further if poor reproduction results from a genetic defect we were unaware of pre-sale. Our policy is to look after the people who look after us so if there is a problem please let us know.

To resolve the issue of a bull breakdown we will work with you to achieve the best outcome for your breeding enterprise. In the instance of a bull breaking down during the breeding season we will endeavour to find a replacement and get him to you ASAP. If you are able to cover the breakdown with a spare, then we will either offer a replacement at a later date or issue a credit equivalent to the purchase price of the original bull that you can use at a future sale.

Animal Health

Although Hazeldean employs best practice procedures in livestock husbandry and does its best to ensure every animal catalogued for sale is free from disease, internal parasites and external parasites, it does not guarantee that any sale animal is free of disease, internal parasites or external parasites.

Beef Class Structural Assessment System

Structural problems in cattle have a substantial effect on both the reproductive and growth performance of a beef herd. It is widely recognised that structural problems in sires have detrimental effects on conception rates, calving patterns and thus profitability.

Similarly, females with inadequate structural characteristics are more prone to weaning lighter calves or conceiving later in the breeding season than their more functional counterparts. These structural problems are filtered through the supply chain resulting in reduced income for the producer, feedlot and thus reducing the overall productivity of the Australian Beef Industry.

Over the past decade, use of the Beef Class Structural Assessment System in the seedstock industry has produced a marked improvement in herds which have shown commitment to using the information appropriately. Through these dedicated breeders, there has been a flow on affect of structural improvement throughout all sectors of the beef cattle industry.

Liam Cardile of 'EEXCEL' structurally assesses many of the leading seedstock herds in Australia. 'EEXCEL' is not involved in any genetic marketing or specific breeding advice and therefore has no conflict of interests to influence their stock appraisal. The integrity of the structural data provided by 'BEEFXCEL' is recognised throughout the industry as Liam is a fully INDEPENDENT assessor.

Hazeldean Structural Program

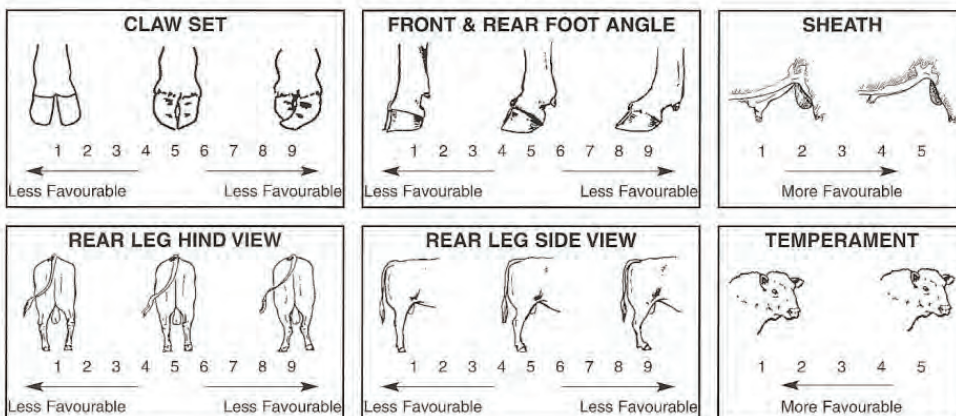
The Hazeldean Sale Bulls have been independently structurally assessed to maximise the quality of stock on offer. Any animals deemed inadequate have been removed from the sale draft.

The Hazeldean sale bulls were assessed by Liam Cardile of BEEFXCEL. In addition to annual bull assessments, Hazeldean has recently completed a full female herd assessment program. An ongoing program of assessing first calving females during lactation also helps to further strengthen the structural soundness of the entire Hazeldean breeding herd.

How to use The Beef Class Structural Assessment System

The Beef Class Structural Assessment System uses a 1- 9 scoring system

- A score of 5 is ideal. (Note: Temperament Score of 1 is preferable)
- A score of 4 or 6 shows slight variation from ideal, but this includes most animals. An animal scoring 4 or 6 would be acceptable in any breeding program.
- A score of 3 or 7 shows greater variation but would be acceptable in most commercial programs. However, seedstock producers should be vigilant and understand that this score indicates greater variation from ideal.
- A score of 2 or 8 are low scoring animals and should be looked closely before purchasing.
- A score of 1 or 9 should not be catalogued and are considered culls.



Liam Cardile – Beef Xcel < 2 570

Understanding EBV's

Group Breedplan analyses the growth and production attributes of beef cattle and provides predictions of the genetic merit of individual animals called Estimated Breeding Values (EBV's).

Breedplan is logical and straight forward and provides the only solution to the otherwise impossible task of weighing up individual bull performance and adjusting for pedigree and the performance of brothers and sisters. It gives the correct weighting to all available information and then gives a value and accuracy level for each trait measured. The higher the accuracy percentage, the more confidence you can have in the figure. Without any figures selection becomes guess work. EBV's are shown as +ve or -ve differences from the breed base. The average EBV's for traits change over time as the breed makes genetic progress. The breed average EBV's provide a useful benchmark for comparisons of EBV's for individual animals.

The following is a brief explanation of the figures and what to look for. Remember, all the figures are calculated from the animal's individual performance AND the performance of its relatives that have also been measured or weighed. This is important as it improves the accuracy of the predicted performance of the bull you purchase. For example, if the bull you purchased was light for birth weight, yet one of its parents was heavy at birth, there is a fair chance that some of your bull's calves will inherit the grandparent's high birth weight. Breedplan works out the likelihood of this occurring and includes it in the estimated figure. The same applies to all other measured traits.

CALVING EASE **Calving Ease (CE)**

Appears on sires only and is self explanatory to a large extent. CE (DIR) is Calving Ease direct and refers to the amount of calving difficulty you can expect from this bull directly from the cows he is joined to. CE (DTRS) is Calving Ease daughters and refers to the amount of calving difficulty you can expect from his daughters. **A plus figure in both instances is good.**

Gestation Length (GL)

Some cattle have shorter pregnancies than normal and some longer pregnancies. As growth starts from conception, generally a bull with short gestation length EBV will sire smaller calves at birth than one with a longer gestation length EBV. It also means that the cow has more time to recover from calving to get back in calf for next year. **A negative figure here is good.**

Birthweight (BWT)

Birthweight generally applies mostly to those looking for a heifer bull. Generally at Hazeldean we get a little nervy when we go much above +4.5 for our own heifer joining, although some areas seem to be able to tolerate more birthweight than we can on the Monaro. Even if you are not looking for a heifer bull, keep in mind that a bull with a big birthweight will sire heifer calves and you may run into problems when his daughters calve down. In a well designed program, birthweight EBV should be able to gradually increase as the size of your heifers at 2 years of age increases through selection for improved growth rate.

A low figure here is good, especially over heifers, but be careful that it does not get so low that calf mortality starts to increase. Also, you should challenge your heifers to be able to handle higher birthweights, otherwise calving ease will go the wrong way.

GROWTH & MATERNAL

200, 400 & 600 Day Growth

These figures indicate the sort of weight differences you can expect from the progeny of these bulls (as an average) at 200, 400 and 600 days of age. In other words, if you have two bulls and for 600 Day weight one is +70 and the other is +80, you could expect the bull who is +80 to sire calves that would average 5kgs more bodyweight (as the sire provides half the genes to the calf, that is 10kg divided by 2) at 600 days than the bull who is +70. **A plus figure in all areas is good**, relative to your production, provided birthweight does not get out of control.

Mature Cow Weight

Provides an estimate of the genetic differences between animals in cow weight at 5 years of age. Obviously smaller cows have less maintenance requirements and those that can still wean heavy calves are valuable however remember there is a high negative correlation between low Mature Cow Weight and growth meaning selection for this trait can put pressure on growth rate of progeny. More efficient "easy-care" cows have a MCW lower than their 600 DWT and we select for this.

Understanding EBV's

Milk

Milk is the figure that most people find hardest to understand. How can you work out how much milk an animal is capable of producing in its offspring with out actually milking them and measuring the quantity? Milk is obviously an important consideration especially for those beef producers turning calves straight off their mothers. Too much of a good thing can lead to udder problems and also result in failure to get back in calf early, especially if a really good milker hits a tight Spring. There are some cows that will milk well and yet still retain enough body condition to start cycling soon after calving. They are obviously very desirable. **A plus figure here is good** but beware of the problems associated with extreme production.

FERTILITY

Scrotal Size (SS)

There is a strong correlation between scrotal size and both male and female fertility. Bulls with big testicles generally sire more fertile daughters. You may notice a discrepancy between scrotal size on sale day and the EBV. This is because testicles, like just about everything else, grow at different rates in different bulls and rankings will therefore change. As with all Breedplan analysis, information on relatives also has an effect. The measurement for the EBV was taken at the same time as we started to program the heifers for their AI program back in early September. The reason we did this was to identify those bulls who failed to reach sexual maturity at the minimum age we want our heifers to be cycling. We cull all bulls who fail to reach a minimum of 30cm at 12 months of age as these animals, if allowed to go through into the sale group, will be more likely to breed heifers who will not get in calf early. **A plus figure here is good.**

Days to Calving (DC)

This figure is an indication of the expected time between the start of joining and the subsequent calving of progeny. Lower Days to Calving means an animals is expected to produce daughters that conceive earlier. Females with Lower Days to calving also tend to show earlier puberty as heifers and earlier return to oestrus. **A minus figure here is good.**

CARCASE

Carcase weight (CWT)

Carcase weight refers to the difference you can expect in the weight of this bull's steer progeny when slaughtered at 650 days of age. Remember that this is an EBV and therefore the actual contribution of this trait to the bull's offspring is half of the number published. This is because only half of any animal's genes come from the sire. The other half comes from the mother. **A high figure is good.**

Eye Muscle Area (EMA)

This trait is measured by ultrasound when the bulls are approximately 15-18 months old. As muscling is consistent throughout the body, EMA is a good indicator of overall muscle content when the measurement is taken and analysed in the light of total body weight. It is actually impossible to have an animal with more meat in his hindquarter than in his forequarter, or vice versa. Many years ago, Professor Rex Butterfield dissected numerous carcasses from many breeds to prove that as a proportion of total muscle weight, almost exactly the same amounts of muscle were found in various parts of the animal regardless of breed or physical appearance. Despite general opinion to the contrary, it has been recently proven that increased muscle is not linked to poor fertility or calving difficulty. **A plus figure here is good.**

Fat Depth – Rib & Rump

Also calculated from ultrasound measurement, high fat depth EBV's will mean bulls that leave fatter carcasses and lower lean meat yield. However, recent research has shown that bulls that are positive for fat generally sire more fertile daughters than those that are negative, all other things being equal. Care has to be taken, therefore, not to select poorer types that lack doing ability and constitution resulting in low fertility. This EBV needs to be kept in balance and **extremes of plus or minus should be avoided.**

Retail Beef Yield (RBY%)

This figure is calculated to give you the expected amount of retail beef as a percentage of the total carcase weight in a 300 kg carcase sired by this bull. Again you need to understand that as animals receive half their genes from their mother and half from their father, this figure needs to be divided by two to ascertain just how much is a result of the bull's influence.

Understanding EBV's

Intramuscular Fat- Marbling (IMF%)

As abattoir data is always slow, there are big benefits in measuring live cattle. The Animal Genetics and Breeding Unit (AGBU) at Armidale with Meat Research has been researching marbling scanning since 1996 and has come up with some very Corporation, CRC and Breed Society support encouraging results for genetic evaluation. IMF% and actual marble score are reasonably well correlated and therefore selection on IMF% will improve marbling. To further improve accuracy, the figure or IMF% calculated by Breedplan also includes abattoir data and overseas EPD data, as well as ultrasound. The US data on marbling is generated purely from abattoir carcase information.

A plus figure here is good.

\$ Index Values

There are currently four selection indexes calculated for animals within the Angus BREEDPLAN analysis. The Angus Breeding Index is a general purpose selection index that is suitable for use in the majority of commercial beef operations, whereas the Domestic, Heavy Grain and Heavy Grass selection indexes are specific to beef operations targeting a defined production system and market endpoint.

Angus Breeding Index - estimates the genetic differences between animals in net profitability per cow joined in a typical commercial self replacing herd using Angus bulls. This selection index is not specific to a particular production system or market end-point, but identifies animals that will improve overall profitability in the majority of commercial grass and grain finishing beef production systems. The index is particularly suited to commercial producers who sell progeny into different markets, or to seedstock producers supplying bulls to commercial clients who produce for a range of different production systems and market end points.

Domestic Index - estimates the genetic differences between animals in net profitability per cow joined in a commercial self replacing herd targeting the domestic supermarket trade, with progeny finished using either grass, grass supplemented by grain or grain finishing systems.

Heavy Grain Index - estimates the genetic differences between animals in net profitability per cow joined in a commercial self replacing herd targeting pasture grown steers with a 200 day feedlot finishing period for the grain fed high quality, highly marbled markets.

Heavy Grass Index - estimates the genetic differences between animals in net profitability per cow joined in a commercial self replacing herd targeting pasture finished heavy steers. Further information regarding each selection index is available from www.angusaustralia.com.au

Trial Docility - This EBV is expressed as the difference in the percentage of progeny that will be scored with acceptable temperament. **Higher scores are more favourable.** For example, a bull with an EBV of +20 would be expected to on average produce 15% more progeny with acceptable temperament than a bull with an EBV of -10.

Heritability of Traits

Some traits are more likely to be inherited than others. The most **highly heritable traits** (over 35%) are: birthweight, 600 day weight, mature cow weight, scrotal size, rump fat, retail beef yield and docility. Traits of **medium heritability**, (20 -30%) are gestation length, eye muscle area, rib fat and 200 & 400 day weight and those with the **lowest heritability**, (less than 20%) are days to calving, calving ease and milk.

The team at Hazeldean systematically collect as accurately as possible all the required information that is then submitted to Breedplan for analysis. Every calf is tagged and weighed at birth, again at 200 days, 400 days and 600 days. Every animal is scanned for carcase data, all male animals have testicles measured at 400 days and structural and docility assessments are done by an independent assessor (Liam Cardile from BeefXcel).



Looking after your new Hazeldean bull

Bulls are like us. Some settle easily in to a new location - others don't. Here are a few pointers to help your new bull/s settle in.

Bulls are social animals and there is a hierarchy within each mob. Usually we have around 4 mobs of bulls for any one sale. If bulls are purchased from different mobs and put together they will very likely fight to sort out who's "boss". If you buy more than one bull, find out from us at the end of the sale what mobs are represented in your purchases and we can tell you whether you are likely to experience fighting when we get them home for you.

When the bull/s arrive at your home, let them settle in by leaving them in the yards overnight and observe how they are reacting to their new home. Give them fresh water and good quality hay. If they are fighting you might have to split them, depending on how serious it is. Two bulls fighting is often less of a concern than 3 bulls fighting as sometimes the third bull will broadside one of the bulls locked in battle and serious injury can result. If you have purchased only one bull, then find a mate or two for him straight away. If you have bought multiple bulls from a number of different management groups or studs it is often better to put them all together at once. Introducing new bulls into a mob one at a time can lead to the new bull being given a very hard time indeed by his contemporaries. Sometimes a young bull will team up with a bigger older bull but often it should be one or two cows or steers. Bulls left on their own are much more likely to jump or push through fences and be unsettled and once they get into the habit are hard to stop.

We do not use dogs on our cattle so your new bull might react strangely if you use a dog. In all instances read the body language of your new bull/s and take appropriate action. Sometimes this might involve a stint in the yards, other times it might be better to let them into a paddock straight away with one or two cows. The added advantage of running them with cows is that it will help them develop immunity to foreign bugs they may not have previously encountered well before the breeding season. Whatever the circumstances, do not take the view that everything will be fine because sometimes it isn't and each bull will be different. For further advice please do not hesitate to call us.

Your new bull will be up to date with vaccine and parasite treatment at the time of sale however a booster vaccination should be given annually including Vibriosis, Pestivirus and 7 in 1. These vaccinations can be given anytime to fit in with your normal management routine however 4 to 6 weeks before mating is a good time and this also gives you a chance to inspect all your bulls and establish their general soundness before the breeding season.

Prior to mating a breeding soundness evaluation of all the bulls you own is a good idea. You may wish to undertake this yourself or get a vet to do it for you. Bulls should be assessed for reproductive soundness including palpation and measuring of the testicles. Testes should be at least 32 cm in circumference and tennis ball firm, not hard or soft. They should be symmetrical and free from abnormal lumps and bumps. The epididymus at the base of the testicle should not be enlarged or irregular and the cords at the top of the testicle also free of lumps. It is a good idea to observe your bull's actual physical prowess in a serving ability test. When a bull is mounting a cow he must thrust and complete a service fully before he can be given a tick. Stand to the right and to the rear of the bull and check for corkscrew penis. Corkscrew penis is a condition where the end of the penis spirals preventing entry into the vagina. Corkscrew penis will always deviate to the right side of the cow. Also check the bull for muscle tremor, muscle wastage, lameness, favouring of one hind leg or any other indication he may be unsound. Look for other indicators - unevenly grown hind toes can be a sign of hip problems for instance.

Once your bulls have passed through all these hoops they are ready for joining however do not think that you can now take your eye off the ball (so to speak) because during joining an injury is even more likely to occur, or a long standing problem resurface, due to the workload. Inspect your bulls twice a week at close proximity. Look for the same things you observed in your pre joining check. When you have passed the first 3 weeks of joining make sure there are not large numbers of cows cycling. Even if your bull is serving well and normally there is always a small risk he may be infertile due to poor quality sperm. This may be a temporary or permanent problem. If you are in any doubt replace the bull with another.

It is important to remember that the fundamental profit driver in a beef enterprise is reproduction. It is therefore vital to spend time making sure your bulls are working properly.

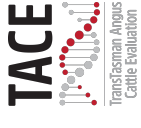
During the non-breeding season DO NOT LET YOUR BULLS GET FAT!! Bulls will last longer, have fewer feet problems and will be more agile and virile generally if they are not overweight. The best mature bull paddock is often your worst paddock. Young bulls may need a better paddock as they are still growing.

At the 6 week pre joining check-up, move all bulls to better paddocks to start lifting them before mating.

If you are in any doubt as to the soundness of your bull/s, or what you should be doing or looking for, please call us.

Jim Litchfield

TransTasman Angus Cattle Evaluation - Mid June 2024 Reference Tables



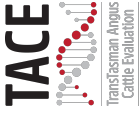
BREED AVERAGE EBVS																							
Calving Ease		Birth			Growth			Fertility			Carcass			Other			Structure			Selection Indexes			
CEDir	CEDirs	GL	BW	200	400	600	MCW	Milk	SS	DTC	CWT	EMA	RIB	P8	RBV	IMF	NF-F	DOC	Claw	Angle	Leg	\$A	\$A-L
+1.7	+2.7	-4.4	+4.0	+51	+92	+119	+102	+17	+2.2	-4.6	+67	+6.4	-0.1	-0.3	+0.5	+2.3	+0.22	+21	+0.84	+0.97	+1.02	+200	+345
Brd Avg																							

* Breed average represents the average EBV of all 2022 drop Australian Angus and Angus-influenced seedstock animals analysed in the Mid June 2024 TransTasman Angus Cattle Evaluation

PERCENTILE BANDS TABLE																								
Calving Ease		Birth			Growth			Fertility			Carcass			Other			Structure			Selection Indexes				
CEDir	CEDirs	GL	BW	200	400	600	MCW	Milk	SS	DTC	CWT	EMA	RIB	P8	RBV	IMF	NF-F	DOC	Claw	Angle	Leg	\$A	\$A-L	
Less	Calving	Diffculty	Longer	Heavier	Lighter	Live	Weight	Lighter	Live	Weight	Lighter	Live	Weight	Lighter	Live	Weight	Lighter	Live	Weight	Lighter	Live	Weight	Lighter	Live
+10.1	+9.9	-10.4	-0.4	+71	+124	+164	+166	+29	+5.1	-8.9	+101	+14.7	+4.3	+5.4	+2.1	+6.1	-0.65	+45	+0.42	+0.60	+0.72	+278	+454	
+8.3	+8.3	-8.6	+1.0	+65	+114	+149	+145	+25	+4.1	-7.5	+90	+12.1	+2.9	+3.6	+1.6	+4.9	-0.37	+37	+0.54	+0.70	+0.82	+257	+424	
+7.2	+7.3	-7.6	+1.7	+61	+109	+142	+135	+23	+3.6	-6.8	+84	+10.7	+2.2	+2.6	+1.3	+4.3	-0.23	+33	+0.60	+0.76	+0.86	+245	+407	
+6.4	+6.5	-7.0	+2.2	+59	+105	+137	+128	+22	+3.3	-6.4	+81	+9.8	+1.7	+2.0	+1.2	+3.9	-0.14	+30	+0.66	+0.80	+0.90	+231	+396	
+5.7	+5.9	-6.5	+2.5	+58	+103	+134	+123	+21	+3.1	-6.0	+78	+9.1	+1.3	+1.5	+1.0	+3.6	-0.08	+28	+0.68	+0.84	+0.92	+231	+388	
+5.0	+5.4	-6.1	+2.8	+56	+101	+131	+118	+20	+2.9	-5.7	+76	+8.5	+1.0	+1.1	+0.9	+3.3	-0.02	+27	+0.72	+0.86	+0.94	+225	+380	
+4.5	+4.9	-5.7	+3.1	+55	+99	+128	+114	+19	+2.7	-5.5	+74	+8.0	+0.8	+0.8	+0.8	+3.0	+0.03	+25	+0.74	+0.88	+0.96	+220	+373	
+3.9	+4.5	-5.4	+3.3	+54	+97	+126	+111	+19	+2.6	-5.3	+72	+7.5	+0.5	+0.5	+0.7	+2.8	+0.08	+24	+0.76	+0.90	+0.98	+216	+367	
+3.4	+4.1	-5.0	+3.5	+53	+95	+123	+108	+18	+2.4	-5.0	+70	+7.1	+0.3	+0.2	+0.6	+2.6	+0.13	+23	+0.80	+0.92	+1.00	+211	+361	
+2.9	+3.6	-4.7	+3.8	+52	+93	+121	+105	+18	+2.3	-4.8	+69	+6.7	+0.1	-0.1	+0.6	+2.4	+0.17	+21	+0.82	+0.94	+1.00	+207	+355	
+2.4	+3.2	-4.4	+4.0	+51	+92	+119	+101	+17	+2.1	-4.6	+67	+6.3	-0.1	-0.4	+0.5	+2.2	+0.21	+20	+0.84	+0.96	+1.02	+203	+349	
+1.8	+2.7	-4.1	+4.2	+50	+90	+116	+99	+16	+2.0	-4.4	+65	+5.9	-0.4	-0.6	+0.4	+2.0	+0.26	+19	+0.86	+0.98	+1.04	+199	+343	
+1.2	+2.2	-3.8	+4.4	+49	+89	+114	+95	+16	+1.9	-4.2	+64	+5.5	-0.6	-0.9	+0.3	+1.9	+0.30	+18	+0.88	+1.00	+1.06	+194	+336	
+0.6	+1.7	-3.5	+4.6	+48	+87	+112	+92	+15	+1.7	-4.0	+62	+5.1	-0.8	-1.2	+0.3	+1.7	+0.35	+17	+0.92	+1.02	+1.06	+189	+330	
-0.1	+1.2	-3.2	+4.9	+47	+85	+109	+89	+14	+1.6	-3.8	+60	+4.7	-1.0	-1.5	+0.2	+1.5	+0.40	+16	+0.94	+1.06	+1.08	+184	+322	
-0.9	+0.5	-2.8	+5.1	+45	+83	+107	+85	+14	+1.4	-3.6	+58	+4.2	-1.3	-1.8	+0.1	+1.3	+0.46	+14	+0.96	+1.08	+1.10	+178	+314	
-1.8	-0.2	-2.4	+5.4	+44	+81	+104	+81	+13	+1.3	-3.3	+56	+3.7	-1.5	-2.2	+0.0	+1.1	+0.52	+13	+1.00	+1.10	+1.12	+171	+304	
-2.9	-1.1	-1.9	+5.8	+42	+78	+100	+76	+12	+1.1	-3.0	+53	+3.0	-1.9	-2.6	-0.2	+0.8	+0.59	+11	+1.04	+1.14	+1.16	+163	+292	
-4.5	-2.3	-1.2	+6.2	+40	+75	+95	+70	+11	+0.8	-2.5	+50	+2.2	-2.3	-3.2	-0.4	+0.5	+0.69	+9	+1.08	+1.18	+1.18	+153	+276	
-7.0	-4.2	-0.2	+6.9	+37	+70	+88	+60	+9	+0.4	-1.7	+45	+1.0	-3.0	-4.2	-0.6	+0.0	+0.85	+5	+1.16	+1.26	+1.24	+136	+250	
-12.5	-8.6	+1.8	+8.4	+30	+59	+73	+40	+5	-0.5	-0.2	+34	-1.6	-4.4	-6.0	-1.2	-0.9	+1.14	-1	+1.30	+1.38	+1.34	+106	+200	
More	Calving	Diffculty	Heavier	Lighter	Live	Weight	Lighter	Live	Weight	Lighter	Live	Weight	Lighter	Live	Weight	Lighter	Live	Weight	Lighter	Live	Weight	Lighter	Live	

* The percentile bands represent the distribution of EBVs across the 2022 drop Australian Angus and Angus-influenced seedstock animals analysed in the Mid June 2024 TransTasman Angus Cattle Evaluation .

TransTasman Angus Cattle Evaluation - Mid June 2024 Reference Tables



BREED AVERAGE EBVs										
	\$A	\$D	\$GN	\$GS	\$A-L	\$D-L	\$GN-L	\$GS-L	\$PRO	\$T
Brd Avg	+200	+166	+264	+185	+345	+298	+412	+386	+149	+185

* Breed average represents the average EBV of all 2022 drop Australian Angus and Angus-influenced seedstock animals analysed in the Mid June 2024 TransTasman Angus Cattle Evaluation .

PERCENTILE BANDS TABLE										
% Band	\$A	\$D	\$GN	\$GS	\$A-L	\$D-L	\$GN-L	\$GS-L	\$PRO	\$T
1%	+278	+234	+369	+266	+454	+397	+544	+519	+235	+238
5%	+257	+215	+340	+243	+424	+369	+508	+481	+210	+223
10%	+245	+204	+324	+231	+407	+354	+489	+461	+197	+216
15%	+237	+197	+313	+222	+396	+344	+476	+447	+188	+210
20%	+231	+192	+304	+215	+388	+336	+465	+437	+181	+206
25%	+225	+187	+297	+210	+380	+329	+455	+428	+175	+202
30%	+220	+183	+290	+205	+373	+323	+447	+420	+170	+199
35%	+216	+179	+284	+200	+367	+317	+439	+412	+165	+196
40%	+211	+175	+278	+195	+361	+312	+432	+405	+160	+193
45%	+207	+171	+273	+191	+355	+307	+424	+397	+155	+190
50%	+203	+167	+267	+186	+349	+301	+417	+390	+151	+187
55%	+199	+164	+261	+182	+343	+296	+410	+383	+146	+184
60%	+194	+160	+255	+177	+336	+290	+402	+376	+141	+181
65%	+189	+156	+249	+172	+330	+284	+393	+368	+136	+177
70%	+184	+151	+242	+167	+322	+277	+384	+359	+131	+174
75%	+178	+146	+234	+161	+314	+270	+374	+349	+124	+170
80%	+171	+140	+226	+154	+304	+261	+362	+338	+117	+165
85%	+163	+134	+215	+146	+292	+251	+348	+324	+109	+159
90%	+153	+125	+201	+136	+276	+237	+329	+306	+97	+152
95%	+136	+111	+180	+120	+250	+216	+298	+277	+79	+140
99%	+106	+85	+143	+90	+200	+173	+241	+216	+46	+118
	Lower Profitability	Lower Profitability	Lower Profitability	Lower Profitability	Lower Profitability	Lower Profitability	Lower Profitability	Lower Profitability	Lower Profitability	Lower Profitability
	Greater Profitability	Greater Profitability	Greater Profitability	Greater Profitability	Greater Profitability	Greater Profitability	Greater Profitability	Greater Profitability	Greater Profitability	Greater Profitability

* The percentile bands represent the distribution of EBVs across the 2022 drop Australian Angus and Angus-influenced seedstock animals analysed in the Mid June 2024 TransTasman Angus Cattle Evaluation .

HAZELDEAN NEW ENGLAND BULL SALE EBV SUMMARY TACE MID JUNE 2024

LOT	Society Id	Sire	MG GRP	BW	200	400	600	GL	SS	DC	CEDi	CEM	MCW	CWT	RIB	P8	EMA	RBY	IMF	DOC	ABI	DOM	HGRN	HGRS
1	NHZ22T1985	HAZELDEAN R68	1	5.2	57	104	147	-8	1.2	-4	3.8	7	121	82	-2	-4	8	1.5	2.3	10	238	192	300	226
2	NHZ22T335	RENNYLEA NATIONWIDE N432	1	4.6	53	97	128	-8	0.4	-2	6.4	4.9	111	71	-1	-2	8.2	1	0.6	26	187	152	249	165
3	NHZ22T2336	HAZELDEAN Q1229	1	5.4	53	100	131	-2	2.9	-9	-5	0.3	85	90	-1	-0	11	0.2	4.3	30	268	220	347	261
4	NHZ22T415	MURDEDUKE QUARTERBACK Q011	1	1.4	43	75	109	-8	5	-5	6.1	2.6	88	47	1.3	3.1	7	-0	4.9	16	211	153	286	203
5	NHZ22T2208	HAZELDEAN Q1919	1	6.6	55	91	128	-5	2.9	-5	-3	-1	112	78	-2	-5	6.5	1.1	2.4	6	191	152	244	178
6	NHZ22T748	HAZELDEAN RAMROD R1581	1	4.4	59	106	151	-6	3	-3	4.3	1.1	130	84	-1	-3	8.7	0.5	3.8	14	217	160	295	204
7	NHZ22T48	RENNYLEA NORL519	1	2.2	39	72	90	-5	1	-6	2.2	2.8	75	46	2.4	4.3	7.3	1.1	2.6	16	223	188	285	206
8	NHZ22T597	RENNYLEA NATIONWIDE N432	1	3.2	55	95	113	-6	0	-6	3.8	3.2	105	65	3.1	2.1	4.2	-0	4.9	13	240	198	339	219
9	NHZ22T569	HAZELDEAN RAMROD R1581	1	3.4	43	79	110	-9	1	-5	7.5	8.7	94	58	-1	-4	7.6	1.3	2.1	19	198	162	247	186
10	NHZ22T2033	HAZELDEAN R191	1	5.1	40	83	111	-3	0.9	-7	1.6	4.8	92	74	-1	-0	7.4	1	4	10	232	194	289	222
11	NHZ22T1960	HAZELDEAN Q1229	1	0.7	43	89	114	-2	3.8	-6	5.4	4.2	85	49	-0	-3	1.9	-0	5.1	-1	209	173	273	198
12	NHZ22T2485	HAZELDEAN R23	1	3	48	92	116	-3	3.7	-7	7.8	9.8	70	80	1.4	1.5	4.3	0	4.3	17	265	223	342	256
13	NHZ22T677	RENNYLEA NATIONWIDE N432	1	3.3	51	97	121	-9	0.5	-7	5.1	8.9	130	75	1.8	0.7	0.6	-0	2.9	33	212	185	272	194
14	NHZ22T1801	HAZELDEAN Q1580	1	0.2	37	83	108	-10	2.5	-8	8.2	3.5	87	59	-0	-3	7.7	1.4	2.9	2	222	193	270	213
15	NHZ22T1025	HAZELDEAN Q1229	1	2.6	43	81	101	-8	3.7	-5	3.6	7.2	74	52	-2	-2	3.7	-0	5.3	16	203	164	277	190
16	NHZ22T487	HAZELDEAN Q1580	1	1.9	45	84	108	-5	2.3	-9	4.2	7.6	126	64	-3	-5	3.2	1.5	2.9	9	203	182	247	190
17	NHZ22T2133	HAZELDEAN R191	1	3.5	36	73	97	-2	0.5	-9	-3	3.2	81	59	2	2.5	2	-1	5.7	13	207	166	270	197
18	NHZ22T1191	HAZELDEAN Q1580	1	1.5	44	81	97	-8	2	-9	6.6	6.2	86	54	0.9	0	2.7	0.8	3.1	40	241	215	299	225
19	NHZ22T1194	HAZELDEAN POWER UP R274	2	2.3	59	103	135	0.8	3.3	-3	1.3	4.9	125	70	-3	-6	2.2	0	3.3	27	181	145	248	161
20	NHZ22T1224	HAZELDEAN R844	2	2.7	52	101	133	-4	2.9	-6	2	-5	100	77	0	-0	2.8	-0	4.4	29	222	177	300	210
21	NHZ22T637	MURDEDUKE QUARTERBACK Q011	2	4.2	51	94	117	-11	2.8	-6	4.6	3.4	103	73	1.5	0.8	9.1	0.6	2.2	31	225	192	293	209
22	NHZ22T145	LANDFALL NEW GROUND TFAN90	2	2	49	97	126	-5	3.7	-4	5.4	2.6	92	63	0.2	0.7	4.9	-0	3.8	37	211	167	287	198
23	NHZ22T1317	TE MANIA QARARA Q514	2	1.8	54	95	118	-6	2.8	-6	6.1	7.9	82	74	0.1	0.1	3.1	-1	4.4	12	244	200	333	228
24	NHZ22T1626	HAZELDEAN R898	2	3.8	48	96	131	-4	4.1	-8	8	7.4	100	67	0	-2	3.3	-1	4.8	28	236	191	301	229
25	NHZ22T371	HAZELDEAN Q319	2	5.7	65	115	154	-9	2.6	-9	-1	6.1	163	88	-3	-5	9	1.1	3	50	257	220	320	246
26	NHZ22T979	HAZELDEAN Q1237	2	2.6	53	95	132	-3	3.6	-6	5.9	6.6	105	81	0.7	2	5.4	-0	4.1	17	249	196	325	240
27	NHZ22T219	LANDFALL NEW GROUND TFAN90	2	2.4	51	100	129	-2	3.6	-2	2.1	1.4	117	67	1.6	0.1	8.5	0.4	3.6	20	199	159	273	186
28	NHZ22T1033	HAZELDEAN POWER UP R274	2	5.7	82	143	189	-4	4.1	-5	-6	1.4	198	93	-3	-6	-1	-1	1.5	19	186	160	246	170
29	NHZ22T1430	CHILTERN PARK MOE M6	2	4.2	50	95	122	0.2	3.1	-6	-3	2.7	77	83	2.2	5.1	3.7	-0	2.1	35	223	183	293	209
30	NHZ22T2358	HAZELDEAN R158	2	4.6	57	104	135	-4	2.8	-4	1.2	4	108	72	-2	-5	12	1.7	2.2	22	228	191	296	213
ANGUS BREED AVERAGE EBVS				4	51	92	119	-4	2.1	-5	2.3	3.2	102	67	-0	-0	6.3	0.5	2.2	20	\$203	\$168	\$267	\$187
				TOP 5%		TOP 10%				TOP 30%														

HAZELDEAN NEW ENGLAND BULL SALE EBV SUMMARY TACE MID JUNE 2024

LOT	Society Id	Sire	MG GRP	BW	200	400	600	GL	SS	DC	CEDii	CEM	MCW	CWT	RIB	P8	EMA	RBY	IMF	DOC	ABI	DOM	HGRN	HGRS
31	NHZ22T1343	CLUNIE RANGE PLANTATION P392	2	2.9	57	97	118	-5	4.1	-3	7.9	3.1	90	68	-1	-3	3.4	0.2	3.1	11	203	169	281	182
32	NHZ22T1006	RENNYLEA NATIONWIDE N432	2	2.2	53	95	113	-8	1.2	-7	8.2	6.6	95	65	4.2	3.6	2.6	-1	3.2	33	239	204	324	220
33	NHZ22T856	RENNYLEA NATIONWIDE N432	2	2.7	55	99	120	-7	2.6	-4	4.7	5.7	110	70	-1	-2	6.9	0.7	1.8	40	208	181	276	188
34	NHZ22T173	LANDFALL NEW GROUND TFAN90	2	6.2	61	103	132	-6	4.5	-6	-9	0.3	114	70	-0	-0	9.6	0.6	1.6	43	204	172	266	190
35	NHZ22T934	LANDFALL NEW GROUND TFAN90	2	5.1	56	101	130	-6	6.1	-6	3	5.8	120	71	0.7	-0	9	1.2	1.1	18	225	197	278	215
36	NHZ22T1177	HAZELDEAN Q843	2	4.4	53	98	128	-3	1.7	-3	3.2	2.8	114	79	-0	0.3	8.7	0.8	2.1	38	208	169	278	190
37	NHZ22T103	BALDRIDGE BEAST MODE B074	3	4	66	105	135	-1	2.5	-5	4.8	5.7	131	81	-1	-2	4.5	0.6	2.3	29	234	197	309	214
38	NHZ22T1042	HAZELDEAN RANGER R1593	3	2	52	86	118	-8	2.7	-6	4.4	4.8	87	72	3.2	0.7	1.3	-1	4.8	16	226	173	306	212
39	NHZ22T486	RENNYLEA NATIONWIDE N432	3	5.7	65	110	149	-9	0.7	-4	3.6	5.4	147	88	-3	-3	7	0.3	3.2	22	228	180	308	210
40	NHZ22T2480	HAZELDEAN R1523	3	2	46	90	119	-4	2.1	-7	7.1	4.7	102	63	0.3	1.7	4.5	-0	3.5	20	222	180	291	209
41	NHZ22T744	HAZELDEAN RAMROD R1581	3	4.8	61	110	149	-11	2.7	-5	7	4.2	153	77	-3	-4	6.6	1.5	1.1	24	218	186	271	205
42	NHZ22T908	HAZELDEAN P709	3	5.3	51	83	110	-3	3	-3	-3	-2	94	63	-0	-1	4.9	-1	4.1	22	157	115	228	139
43	NHZ22T63	BALDRIDGE BEAST MODE B074	3	5	61	95	126	-5	1.3	-7	5.2	2.2	117	65	0.3	-1	0.4	-1	4.1	13	227	182	305	208
44	NHZ22T2354	HAZELDEAN R164	3	5.1	55	100	129	-5	3.6	-3	-1	3.2	132	68	-1	-3	5.5	0.6	1.4	17	161	138	211	146
45	NHZ22T671	RENNYLEA NATIONWIDE N432	3	7.1	72	121	155	-5	1.6	-3	-7	-7	171	87	-2	-3	9.4	1.8	-1	21	189	166	248	167
46	NHZ22T2200	HAZELDEAN RONALDO R1561	3	7.1	63	98	126	-2	0.7	-4	-9	2.3	128	73	-2	-2	6.5	1	1.9	16	192	158	258	169
47	NHZ22T1930	HAZELDEAN R361	3	4.5	55	97	132	-6	1.6	-6	1.3	3.8	152	82	-2	-2	4.9	1.1	-0	28	173	150	215	159
48	NHZ22T867	MURDEDUKE QUARTERBACK Q011	3	2.7	42	81	106	-4	4.6	-6	4.3	-1	78	54	2.7	1.6	4.4	0.1	3.8	10	209	170	271	198
49	NHZ22T2394	HAZELDEAN R302	3	2.3	43	82	106	-6	1.2	-3	8.1	1.9	113	59	-1	-3	6.4	1.1	5.1	24	191	152	260	173
50	NHZ22T2118	HAZELDEAN R1381	3	4.8	55	95	124	-3	1.9	-5	1.9	5	129	84	0.2	0.2	7.8	0.5	2.5	1	206	169	273	189
51	NHZ22T2355	HAZELDEAN R1278	3	6	67	120	155	-5	4.1	-7	5.2	4.7	126	93	-2	-1	7.2	1.3	0.2	40	271	239	336	258
52	NHZ22T819	HAZELDEAN POWER UP R274	3	4.8	59	99	127	-6	3.7	-8	-2	6	135	70	-2	-3	5.9	1.4	1.4	6	221	198	271	208
53	NHZ22T2490	HAZELDEAN R401	3	5.4	49	90	117	-4	3.8	-5	0	0.9	120	66	0.8	-0	6.8	0.6	3.1	24	188	154	247	174
54	NHZ22T616	HAZELDEAN MAGNUM M586	3	3.8	47	81	106	-4	2.2	-8	-5	7.4	81	64	0.3	1.7	11	0.7	2.8	32	233	193	298	221
55	NHZ22T1141	HAZELDEAN Q319	4	2	49	91	120	-5	3	-8	2.9	7.6	119	70	2.7	2.2	-1	-2	4.5	26	200	161	267	187
56	NHZ22T960	RENNYLEA NATIONWIDE N432	4	5.4	67	123	167	-5	1.6	-2	-0	3.8	178	108	-2	-3	4.5	0.8	0.7	21	177	143	237	158
57	NHZ22T925	TE MANIA QARARA Q514	4	2.9	56	96	128	-7	3.7	-6	3.6	7.4	97	78	0.4	1.6	7	-1	2.6	43	227	180	305	213
58	NHZ22T724	HAZELDEAN Q1237	4	3.6	46	76	104	-5	1.5	-7	7	5.1	80	73	0.1	-1	4.4	0.3	4.2	36	228	180	299	213
59	NHZ22T1037	HAZELDEAN REPRIMAND R303	4	6.7	67	111	140	-5	4.6	-6	0.1	-3	149	77	-1	-3	-5	-1	3.2	14	187	162	249	168
60	NHZ22T1158	HAZELDEAN Q1237	4	4.4	42	85	119	-3	3.2	-6	-0	1.5	69	72	0.7	0.7	15	1.4	2.6	37	239	189	302	232
ANGUS BREED AVERAGE EBVS				4	51	92	119	-4	2.1	-5	2.3	3.2	102	67	-0	-0	6.3	0.5	2.2	20	\$203	\$168	\$267	\$187
				TOP 5%		TOP 10%		TOP 30%																

HAZELDEAN NEW ENGLAND BULL SALE EBV SUMMARY TACE MID JUNE 2024

LOT	Society Id	Sire	MG GRP	BW	200	400	600	GL	SS	DC	CEDii	CEM	MCW	CWT	RIB	P8	EMA	RBY	IMF	DOC	ABI	DOM	HGRN	HGRS
61	NHZ22T1113	CONNAMARA P64	4	4.4	53	112	146	-3	1.5	-5	4.6	3.1	134	87	0	0.3	9.2	0.7	3.6	3	247	205	324	235
62	NHZ22T1071	HAZELDEAN P709	4	0.2	40	79	110	-3	2.8	-4	4.7	7.8	91	61	0.8	-0	4	0.1	5	25	192	143	261	179
63	NHZ22T1014	HAZELDEAN Q843	4	3.2	58	100	140	-5	3.6	-4	0.4	2.6	104	98	-3	-3	4.9	0.7	0.6	36	199	160	253	185
64	NHZ22T857	RENNYLEA NATIONWIDE N432	4	4.3	61	108	131	-4	1.6	-5	-1	1.2	155	76	-1	-2	3.1	0.8	1.2	16	184	168	240	161
65	NHZ22T2261	HAZELDEAN R114	4	3.5	39	70	97	-6	3.1	-7	2.5	1.6	76	56	2.9	4.3	1.9	0.4	0.6	29	181	152	220	171
66	NHZ22T2174	HAZELDEAN R226	4	3.3	60	107	142	-2	1.6	-3	6.9	6.8	128	87	-4	-5	2.7	0.7	0.5	31	188	159	243	169
67	NHZ22T759	HAZELDEAN Q1237	4	3.4	42	80	99	-4	4.1	-7	6.6	5	62	57	-0	-0	7.3	1.3	1	15	223	200	271	212
68	NHZ22T2283	HAZELDEAN R226	4	5.7	65	119	150	0.1	2.2	-5	2.5	4.1	134	93	-1	-1	2.6	0.9	1.1	41	242	215	308	224
ANGUS BREED AVERAGE EBVS				4	51	92	119	-4	2.1	-5	2.3	3.2	102	67	-0	-0	6.3	0.5	2.2	20	\$203	\$168	\$267	\$187

TOP 5%

TOP 10%

TOP 30%



HAZELDEAN NEW ENGLAND BULL SALE REFERENCE SIRE EBV SUMMARY TACE MID JUNE 2024

Society Id	Name	SONS IN SALE	BW	200	400	600	GL	SS	DC	CEDir	CEM	MCW	CWT	RIB	P8	EMA	RBY	IMF	DOC	ABI	DOM	HGRN	HGRS
NHZR1561	HAZELDEAN RONALDO R1561	1	5.9	66	108	143	-5.7	0.7	-4	-6.8	4.2	144	73	-1.1	-1.4	3.9	-0.1	3.5	14	200	158	276	181
NHZR1581	HAZELDEAN RAMROD R1581	3	6.3	71	122	171	-9.9	2.6	-4.5	-0.9	4.7	180	88	-2.8	-4.6	3.9	0.4	2.7	26	212	169	277	199
NHZR1593	HAZELDEAN RANGER R1593	1	3.4	56	100	127	-4	2.4	-3.5	2.7	6.2	79	78	-2.4	-5	4.5	0.7	4.8	25	245	199	331	229
TFAN90	LANDFALL NEW GROUND TFAN90	4	3.9	57	111	142	-6	6.7	-2.7	0.6	2.5	127	68	2.4	2.2	12.2	0.6	2.4	33	218	181	289	209
USA17960	BALDRIDGE BEAST MODE B074	2	3.5	75	117	141	-3	2.6	-1.5	2.6	3.9	130	77	-2.4	-3.4	1.9	-0.1	2.4	29	212	179	302	185
VHGP64	CONNAMARA P64	1	4.3	71	126	176	-5.2	2.5	-4.1	8.8	7.3	164	108	-2	-2	9.9	0.4	3.9	13	271	208	367	260
VTMQ514	TE MANIA QARARA Q514	2	3.7	56	90	111	-7.1	3.3	-9.2	0.4	7.2	83	71	-1.9	-1.5	6.3	0	4.6	35	265	223	349	252
ANGUS BREED AVERAGE EBVS			4	51	92	119	-4.4	2.1	-4.6	2.3	3.2	102	67	-0.1	-0.4	6.3	0.5	2.2	20	\$203	\$168	\$267	\$187
			TOP 5%	TOP 10%			TOP 30%																



NEW ENGLAND 2024



SALE BULLS

1 HAZELDEAN T1985 (Nat) PV APR AMFU NHFU CAFU DDFU Born: 23/08/2022 Society Id: NHZ22T1985

RENNYLEA C511 ARDROSSAN HONOUR H255
 RENNYLEA NORH708 ARDROSSAN MAGISTRATE M101
 RENNYLEA E176 ARDROSSAN PRINCESS H230
Sire: HAZELDEAN R68 **Dam: HAZELDEAN Q986**
 HAZELDEAN KRAKATOA K455 HAZELDEAN JAIPUR J140
 HAZELDEAN M1086 HAZELDEAN M52
 HAZELDEAN H838 HAZELDEAN K492

Front	Rear	Front	Rear	Front	Rear	MUSCLE	TEMP.	SHEATH
6	6	6	6	5	5	C+	2	3

Structural EBV's			
TACE	ANGLE	CLAW	LEGS
	+0.9	+0.68	0.94
ACC%	65%	65%	64%

TRANSTASMAN ANGUS CATTLE EVALUATION - JUNE 2024																						
TACE	CALVING EASE				GROWTH & MATERNAL				FERTILITY		CWT	CARCASE					Doc	Angus Index	Dom	Heavy Grain	Heavy Grass	
	DIR	DTRS	GL	B Wt	200	400	600	MWt	Milk	SS	DC	C Wt	EMA	RIB	RUMP	RBV%	IMF%	Doc.				
EBV	+3.8	+7	-8.2	+5.2	+57	+104	+147	+121	+15	+1.2	-4.3	+82	+8	-2.3	-4.2	+1.5	+2.3	+10	+238	+192	+300	+226
ACC%	62%	51%	80%	80%	81%	79%	79%	76%	71%	77%	41%	68%	67%	67%	68%	58%	73%	74%				

Robust with good frame and volume. Bigger type and a big 600d growth EBV in the top 7%. Top 14% carcass weight. Better than breed average for IMF and EMA.

Purchaser..... Price.....

2 HAZELDEAN T335 (AI) SV HBR AMFU NHFU CAFU DDFU Born: 27/07/2022 Society Id: NHZ22T335

G A R INGENUITY BON VIEW NEW DESIGN 1407
 H P C A INTENSITY LAWSONS DINKY-DI Z191
 G A R PREDESTINED 287L G A R PRECISION 1900
Sire: RENNYLEA NATIONWIDE N432 **Dam: HAZELDEAN H193**
 TE MANIA BERKLEY B1 BALDRIDGE NEBRASKA USA13412671
 RENNYLEA H367 HAZELDEAN B282
 RENNYLEA F228 HAZELDEAN W113

Front	Rear	Front	Rear	Front	Rear	MUSCLE	TEMP.	SHEATH
6	6	6	6	5	5	C+	2	3

Structural EBV's			
TACE	ANGLE	CLAW	LEGS
	+0.76	+0.7	0.88
ACC%	66%	66%	64%

TRANSTASMAN ANGUS CATTLE EVALUATION - JUNE 2024																						
TACE	CALVING EASE				GROWTH & MATERNAL				FERTILITY		CWT	CARCASE					Doc	Angus Index	Dom	Heavy Grain	Heavy Grass	
	DIR	DTRS	GL	B Wt	200	400	600	MWt	Milk	SS	DC	C Wt	EMA	RIB	RUMP	RBV%	IMF%	Doc.				
EBV	+6.4	+4.9	-7.6	+4.6	+53	+97	+128	+111	+24	+0.4	-1.9	+71	+8.2	-1.1	-1.7	+1	+0.6	+26	+187	+152	+249	+165
ACC%	67%	59%	83%	83%	84%	82%	82%	79%	76%	80%	48%	72%	71%	71%	72%	64%	75%	78%				

Great scope and frame, plenty of punch. Top 15% for calving ease direct. Top 8% for milk. Suitable for heifers.

Purchaser..... Price.....

3 HAZELDEAN T2336 (Nat) PV APR AMFU NH50% CAFU DDFU Born: 07/09/2022 Society Id: NHZ22T2336

TE MANIA BERKLEY B1 HAZELDEAN JAIPUR J140
 HAZELDEAN F1023 HAZELDEAN MAGNUM M586
 HAZELDEAN B723 HAZELDEAN H356
Sire: HAZELDEAN Q1229 **Dam: HAZELDEAN Q476**
 G A R PROPHET ARDROSSAN EQUATOR A241
 HAZELDEAN J823 HAZELDEAN H692
 HAZELDEAN G724 HAZELDEAN Z974

Front	Rear	Front	Rear	Front	Rear	MUSCLE	TEMP.	SHEATH
5	6	5	6	5	5	C+	2	4

Structural EBV's			
TACE	ANGLE	CLAW	LEGS
	+0.98	+0.74	1
ACC%	64%	64%	61%

TRANSTASMAN ANGUS CATTLE EVALUATION - JUNE 2024																						
TACE	CALVING EASE				GROWTH & MATERNAL				FERTILITY		CWT	CARCASE					Doc	Angus Index	Dom	Heavy Grain	Heavy Grass	
	DIR	DTRS	GL	B Wt	200	400	600	MWt	Milk	SS	DC	C Wt	EMA	RIB	RUMP	RBV%	IMF%	Doc.				
EBV	-4.9	+0.3	-2	+5.4	+53	+100	+131	+85	+20	+2.9	-8.9	+90	+10.7	-0.7	-0.2	+0.2	+4.3	+30	+268	+220	+347	+261
ACC%	65%	54%	83%	82%	83%	81%	82%	78%	74%	79%	44%	71%	71%	70%	71%	62%	75%	78%				

Extreme thickness and width with exceptional performance. Top 25% for 600d growth EBV along with top 1% for days to calving. High indexing bull indicating strong economic relevance.

Purchaser..... Price.....

Top 5% **Top 10%** **Top 30%**
 Ranking in Angus Aust. Mid June 2024

Proven Genetic Performance

www.hazeldean.com.au

NEW ENGLAND 2024



SALE BULLS

4 HAZELDEAN T415 (AI) SV APR AMFU NHFU CAFU DDFU Born: 29/07/2022 Society Id: NHZ22T415

G A R MOMENTUM USA17354145 TUWHARETOA REGENT D145
 LAWSONS MOMENTOUS M518 DUNOON GOTHIC BHRG531
 LAWSONS AFRICA H229 VLYH229 DUNOON FLOWER E525 BHRE525
Sire: MURDEDUKE QUARTERBACK Q011 **Dam: HAZELDEAN K1068**
 CARABAR DOCKLANDS D62 HAZELDEAN 4 POINT 8 B182
 MURDEDUKE BARUNDAH N026 HAZELDEAN D572
 MURDEDUKE BARUNAH C191 HAZELDEAN B1510

Front	Rear	Front	Rear	Front	Rear	MUSCLE	TEMP.	SHEATH
6	6	7	7	5	5	C+	2	4

Structural EBV's			
TACE	ANGLE	CLAW	LEGS
	+1.04	+0.72	0.98
ACC%	71%	71%	70%

TRANSTASMAN ANGUS CATTLE EVALUATION - JUNE 2024																							
TACE	CALVING EASE				GROWTH & MATERNAL				FERTILITY		CWT	CARCASE					Doc	Angus Index	Dom	Heavy Grain	Heavy Grass		
	DIR	DTRS	GL	B Wt	200	400	600	MWt	Milk	SS	DC	C Wt	EMA	RIB	RUMP	RBV%	IMF%	Doc.					
EBV	+6.1	+2.6	-7.6	+1.4	+43	+75	+109	+88	+19	+5	-5.2	+47	+7	+1.3	+3.1	-0.2	+4.9	+16	+211	+153	+286	+203	
ACC%	67%	57%	83%	82%	83%	81%	81%	78%	74%	79%	44%	71%	70%	70%	71%	61%	74%	77%					

Easy fleshing QB son with plenty of eye appeal. Impressive birth to growth. Top 2% scrotal size. Top 5% IMF, top 7% rump fat. Suitable for heifers.

Purchaser..... Price.....

5 HAZELDEAN T2208 (Nat) PV APR AMFU NHFU CAFU DDFU Born: 29/08/2022 Society Id: NHZ22T2208

K C F BENNETT PERFORMER ARDROSSAN HONOUR H255
 COONAMBLE HECTOR H249 ARDROSSAN MAGISTRATE M101
 COONAMBLE E9 ARDROSSAN PRINCESS H230
Sire: HAZELDEAN Q1919 **Dam: HAZELDEAN Q1384**
 G A R PROPHET BOWMONT JACKPOT SRKJ310
 HAZELDEAN J115 HAZELDEAN M191
 HAZELDEAN A243 HAZELDEAN K611

Front	Rear	Front	Rear	Front	Rear	MUSCLE	TEMP.	SHEATH
5	5	5	6	5	5	C+	2	4

Structural EBV's			
TACE	ANGLE	CLAW	LEGS
	+0.7	+0.46	1.04
ACC%	63%	63%	60%

TRANSTASMAN ANGUS CATTLE EVALUATION - JUNE 2024																							
TACE	CALVING EASE				GROWTH & MATERNAL				FERTILITY		CWT	CARCASE					Doc	Angus Index	Dom	Heavy Grain	Heavy Grass		
	DIR	DTRS	GL	B Wt	200	400	600	MWt	Milk	SS	DC	C Wt	EMA	RIB	RUMP	RBV%	IMF%	Doc.					
EBV	-3.2	-0.9	-5.4	+6.6	+55	+91	+128	+112	+17	+2.9	-5.3	+78	+6.5	-2.1	-5	+1.1	+2.4	+6	+191	+152	+244	+178	
ACC%	65%	55%	82%	81%	83%	81%	81%	78%	74%	79%	44%	70%	70%	70%	71%	62%	75%	76%					

Very sound with scope and length - punchy growth with a good overall balance of traits.

Purchaser..... Price.....

6 HAZELDEAN T748 (AI) PV APR AMFU NHFU CAFU DDFU Born: 02/08/2022 Society Id: NHZ22T748

H P C A INTENSITY HAZELDEAN JAIPUR J140
 RENNYLEA NORL519 HAZELDEAN M18
 RENNYLEA H414 HAZELDEAN K443
Sire: HAZELDEAN RAMROD R1581 **Dam: HAZELDEAN Q1743**
 G A R PROPHET ARDROSSAN EQUATOR A241
 HAZELDEAN J115 HAZELDEAN H846
 HAZELDEAN A243 HAZELDEAN A913

Front	Rear	Front	Rear	Front	Rear	MUSCLE	TEMP.	SHEATH
7	6	6	7	5	5	C+	2	3

Structural EBV's			
TACE	ANGLE	CLAW	LEGS
	+0.92	+0.7	1.02
ACC%	63%	64%	61%

TRANSTASMAN ANGUS CATTLE EVALUATION - JUNE 2024																							
TACE	CALVING EASE				GROWTH & MATERNAL				FERTILITY		CWT	CARCASE					Doc	Angus Index	Dom	Heavy Grain	Heavy Grass		
	DIR	DTRS	GL	B Wt	200	400	600	MWt	Milk	SS	DC	C Wt	EMA	RIB	RUMP	RBV%	IMF%	Doc.					
EBV	+4.3	+1.1	-6.3	+4.4	+59	+106	+151	+130	+25	+3	-2.8	+84	+8.7	-1.4	-3.3	+0.5	+3.8	+14	+217	+160	+295	+204	
ACC%	64%	55%	82%	81%	82%	80%	81%	77%	73%	79%	43%	69%	68%	68%	69%	60%	73%	76%					

Easy doing with an attractive muscle pattern. Very cool birth to growth, top 5% for 600d weight. A power of carcass too, top 16% for IMF. Suitable for heifers.

Purchaser..... Price.....

Top 5% **Top 10%** **Top 30%**
 Ranking in Angus Aust. Mid June 2024

Proven Genetic Performance

www.hazeldean.com.au



HAZELDEAN
LITCHFIELD
EST 1865

NEW ENGLAND 2024

SALE BULLS

7 HAZELDEAN T48 (ET) PV APR AMFU NHFU CAFU DDFU Born: **21/07/2022**
Society Id: **NH222T48**

G A R INGENUITY
H P C A INTENSITY
G A R PREDESTINED 287L
Sire: **RENNYLEA NORL519**
TE MANIA BERKLEY B1
RENNYLEA H414
RENNYLEA C310

SITZ ALLIANCE 6595
KCF BENNETT TOTAL USA13687063
EXT OF CONANGA 6790
Dam: **HAZELDEAN TOTAL C507**
IRONWOOD NEW LEVEL
HAZELDEAN A657

Front	Rear	Front	Rear	Front	Rear	MUSCLE	TEMP.	SHEATH
6	6	5	6	5	5	C+	1	4

Structural EBV's			
TACE	ANGLE	CLAW	LEGS
	+0.82	+0.56	1.1
ACC%	73%	73%	70%

TRANSTASMAN ANGUS CATTLE EVALUATION - JUNE 2024																						
TACE	CALVING EASE				GROWTH & MATERNAL				FERTILITY		CWT	CARCASE					Doc	Angus Index	Dom	Heavy Grain	Heavy Grass	
	DIR	DTRS	GL	B Wt	200	400	600	MWt	Milk	SS	DC	C Wt	EMA	RIB	RUMP	RBY%	IMF%	Doc.				
EBV	+2.2	+2.8	-4.9	+2.2	+39	+72	+90	+75	+9	+1	-6.3	+46	+7.3	+2.4	+4.3	+1.1	+2.6	+16	+223	+188	+285	+206
ACC%	72%	65%	83%	83%	84%	83%	83%	81%	79%	81%	56%	74%	73%	73%	74%	67%	76%	80%				

Long bodied with longevity with a square back end. Nice low birth weight and top 6% for claw EBV indicates good overall structure. Industry leading fats.

Purchaser..... Price.....

8 HAZELDEAN T597 (AI) PV APR Born: **31/07/2022**
Society Id: **NH222T597**

G A R INGENUITY
H P C A INTENSITY
G A R PREDESTINED 287L
Sire: **RENNYLEA NATIONWIDE N432**
TE MANIA BERKLEY B1
RENNYLEA H367
RENNYLEA F228

ARDROSSAN EQUATOR A241
HAZELDEAN JAIPUR J140
HAZELDEAN C33
Dam: **HAZELDEAN Q1911**
TC TOTAL 410
HAZELDEAN H308
HAZELDEAN THEO Y1254

Front	Rear	Front	Rear	Front	Rear	MUSCLE	TEMP.	SHEATH
5	6	5	6	5	6	C+	2	4

Structural EBV's			
TACE	ANGLE	CLAW	LEGS
	-	-	
ACC%	-	-	%

TRANSTASMAN ANGUS CATTLE EVALUATION - JUNE 2024																						
TACE	CALVING EASE				GROWTH & MATERNAL				FERTILITY		CWT	CARCASE					Doc	Angus Index	Dom	Heavy Grain	Heavy Grass	
	DIR	DTRS	GL	B Wt	200	400	600	MWt	Milk	SS	DC	C Wt	EMA	RIB	RUMP	RBY%	IMF%	Doc.				
EBV	+3.8	+3.2	-6.2	+3.2	+55	+95	+113	+105	+19	0	-5.6	+65	+4.2	+3.1	+2.1	-0.4	+4.9	+13	+240	+198	+339	+219
ACC%	68%	60%	84%	83%	84%	82%	83%	80%	77%	81%	47%	73%	72%	72%	73%	64%	76%	79%				

Great thickness and capacity with IMF. Top 5% for IMF and claw set, great fats too. Note: white at base of testes

Purchaser..... Price.....

9 HAZELDEAN T569 (AI) PV APR Born: **31/07/2022**
Society Id: **NH222T569**

H P C A INTENSITY
RENNYLEA NORL519
RENNYLEA H414
Sire: **HAZELDEAN RAMROD R1581**
G A R PROPHET
HAZELDEAN J115
HAZELDEAN A243

ARDROSSAN EQUATOR A241
HAZELDEAN JAIPUR J140
HAZELDEAN C33
Dam: **HAZELDEAN Q1132**
CARABAR DOCKLANDS D62
HAZELDEAN J447
HAZELDEAN D684

Front	Rear	Front	Rear	Front	Rear	MUSCLE	TEMP.	SHEATH
5	6	6	6	5	5	C+	2	4

Structural EBV's			
TACE	ANGLE	CLAW	LEGS
	+0.5	+0.28	0.9
ACC%	66%	66%	64%

TRANSTASMAN ANGUS CATTLE EVALUATION - JUNE 2024																						
TACE	CALVING EASE				GROWTH & MATERNAL				FERTILITY		CWT	CARCASE					Doc	Angus Index	Dom	Heavy Grain	Heavy Grass	
	DIR	DTRS	GL	B Wt	200	400	600	MWt	Milk	SS	DC	C Wt	EMA	RIB	RUMP	RBY%	IMF%	Doc.				
EBV	+7.5	+8.7	-9.4	+3.4	+43	+79	+110	+94	+12	+1	-5	+58	+7.6	-1.3	-3.8	+1.3	+2.1	+19	+198	+162	+247	+186
ACC%	65%	56%	82%	81%	82%	80%	81%	77%	73%	79%	45%	69%	69%	68%	70%	61%	73%	76%				

Big square top, industry leading calving ease and top 1% for both claw and foot angle. Very good structure helps bulls last longer and this guy will deliver! Suitable for heifers.

Purchaser..... Price.....

Top 5% **Top 10%** **Top 30%**

Ranking in Angus Aust. Mid June 2024

Proven Genetic Performance

www.hazeldean.com.au



HAZELDEAN
LITCHFIELD
EST 1865

NEW ENGLAND 2024

SALE BULLS

10 HAZELDEAN T2033 (Nat) PV APR AMFU NHFU CAFU DDFU Born: **24/08/2022**
Society Id: **NH22T2033**

RENNYLEA C511 HAZELDEAN F1023
RENNYLEA NORH708 HAZELDEAN N742
RENNYLEA E176 HAZELDEAN L426
Sire: **HAZELDEAN R191** Dam: **HAZELDEAN Q1292**
HAZELDEAN KATZEN K416 BOWMONT JACKPOT SRKJ310
HAZELDEAN N521 HAZELDEAN M77
HAZELDEAN H477 HAZELDEAN J184

Front	Rear	Front	Rear	Front	Rear	MUSCLE	TEMP.	SHEATH
5	6	6	7	5	6	C	1	4

Structural EBV's			
TACE	ANGLE	CLAW	LEGS
	+0.64	+0.6	0.96
ACC%	59%	60%	60%

TRANSTASMAN ANGUS CATTLE EVALUATION - JUNE 2024																							
TACE	CALVING EASE				GROWTH & MATERNAL				FERTILITY		CWT	CARCASE					Doc	Angus Index	Dom	Heavy Grain	Heavy Grass		
	DIR	DTRS	GL	B Wt	200	400	600	MWt	Milk	SS	DC	C Wt	EMA	RIB	RUMP	RBV%	IMF%	Doc.					
EBV	+1.6	+4.8	-3.4	+5.1	+40	+83	+111	+92	+15	+0.9	-7.4	+74	+7.4	-0.8	-0.4	+1	+4	+10	+232	+194	+289	+222	
ACC%	63%	53%	81%	80%	82%	80%	80%	77%	73%	78%	41%	69%	69%	68%	70%	59%	74%	75%					

Long bodied with big barrel, top 13% for IMF and very good days to calving.

Purchaser..... Price.....

11 HAZELDEAN T1960 (Nat) PV APR AMFU NHFU CAFU DDFU Born: **22/08/2022**
Society Id: **NH22T1960**

TE MANIA BERKLEY B1 TE MANIA BERKLEY B1
HAZELDEAN F1023 HAZELDEAN F1023
HAZELDEAN B723 HAZELDEAN B723
Sire: **HAZELDEAN Q1229** Dam: **HAZELDEAN Q1235**
G A R PROPHET CARABAR DOCKLANDS D62
HAZELDEAN J823 HAZELDEAN K338
HAZELDEAN G724 HAZELDEAN H4

Front	Rear	Front	Rear	Front	Rear	MUSCLE	TEMP.	SHEATH
6	6	6	6	5	5	C+	2	4

Structural EBV's			
TACE	ANGLE	CLAW	LEGS
	+0.84	+0.64	0.92
ACC%	61%	61%	59%

TRANSTASMAN ANGUS CATTLE EVALUATION - JUNE 2024																							
TACE	CALVING EASE				GROWTH & MATERNAL				FERTILITY		CWT	CARCASE					Doc	Angus Index	Dom	Heavy Grain	Heavy Grass		
	DIR	DTRS	GL	B Wt	200	400	600	MWt	Milk	SS	DC	C Wt	EMA	RIB	RUMP	RBV%	IMF%	Doc.					
EBV	+5.4	+4.2	-2.4	+0.7	+43	+89	+114	+85	+17	+3.8	-6	+49	+1.9	-0.2	-2.6	-0.3	+5.1	-1	+209	+173	+273	+198	
ACC%	68%	57%	84%	83%	84%	82%	83%	80%	76%	81%	46%	73%	72%	72%	73%	63%	76%	80%					

Very easy fleshing carcass bull with top 8% scrotal size and top 4% for IMF. Suitable for heifers.

Purchaser..... Price.....

12 HAZELDEAN T2485 (Nat) PV APR AMFU NHFU CAFU DDFU Born: **16/09/2022**
Society Id: **NH22T2485**

RENNYLEA C511 HAZELDEAN JAIPUR J140
RENNYLEA NORH708 HAZELDEAN MAGNUM M586
RENNYLEA E176 HAZELDEAN H356
Sire: **HAZELDEAN R23** Dam: **HAZELDEAN Q841**
HAZELDEAN L1301 BRAVEHEART OF STERN 1217000784
HAZELDEAN N1301 HAZELDEAN M51
HAZELDEAN L416 HAZELDEAN K303

Front	Rear	Front	Rear	Front	Rear	MUSCLE	TEMP.	SHEATH
6	5	6	7	5	6	C	2	4

Structural EBV's			
TACE	ANGLE	CLAW	LEGS
	+1.16	+0.6	1.44
ACC%	61%	61%	60%

TRANSTASMAN ANGUS CATTLE EVALUATION - JUNE 2024																							
TACE	CALVING EASE				GROWTH & MATERNAL				FERTILITY		CWT	CARCASE					Doc	Angus Index	Dom	Heavy Grain	Heavy Grass		
	DIR	DTRS	GL	B Wt	200	400	600	MWt	Milk	SS	DC	C Wt	EMA	RIB	RUMP	RBV%	IMF%	Doc.					
EBV	+7.8	+9.8	-3.4	+3	+48	+92	+116	+70	+17	+3.7	-6.9	+80	+4.3	+1.4	+1.5	0	+4.3	+17	+265	+223	+342	+256	
ACC%	64%	53%	82%	81%	82%	80%	81%	77%	73%	78%	43%	70%	69%	69%	70%	60%	74%	75%					

Strong topline and well balanced. Ample calving ease, top 7% for calving ease direct - to better than breed average for 400d growth. Top 9% for both days to calving and scrotal size. High indexing - good performance on the current money making traits for a cow and calf operation. Suitable for heifers.

Purchaser..... Price.....

Top 5% **Top 10%** **Top 30%**
Ranking in Angus Aust. Mid June 2024

Proven Genetic Performance

www.hazeldean.com.au



HAZELDEAN
LITCHFIELD
EST 1865

NEW ENGLAND 2024

SALE BULLS

13 HAZELDEAN T677 (AI) PV HBR AMFU NHFU CAFU DDFU Born: 01/08/2022 Society Id: NHZ22T677

G A R INGENUITY
H P C A INTENSITY
G A R PREDESTINED 287L
Sire: RENNYLEA NATIONWIDE N432
TE MANIA BERKLEY B1
RENNYLEA H367
RENNYLEA F228

RENNYLEA EDMUND E11
HAZELDEAN N59
HAZELDEAN H85
Dam: HAZELDEAN Q1511
TE MANIA BERKLEY B1
HAZELDEAN J153
HAZELDEAN NEWSLINE C286

Front	Rear	Front	Rear	Front	Rear	MUSCLE	TEMP.	SHEATH
7	6	7	7	5	6	C+	1	4

Structural EBV's			
TACE	ANGLE	CLAW	LEGS
	+1.02	+0.78	1.22
ACC%	64%	64%	63%

TRANSTASMAN ANGUS CATTLE EVALUATION - JUNE 2024																						
TACE	CALVING EASE				GROWTH & MATERNAL				FERTILITY		CWT	CARCASE					Doc	Angus Index	Dom	Heavy Grain	Heavy Grass	
	DIR	DTRS	GL	B Wt	200	400	600	MWt	Milk	SS	DC	C Wt	EMA	RIB	RUMP	RBY%	IMF%	Doc.				
EBV	+5.1	+8.9	-8.7	+3.3	+51	+97	+121	+130	+13	+0.5	-7.3	+75	+0.6	+1.8	+0.7	-0.4	+2.9	+33	+212	+185	+272	+194
ACC%	66%	57%	83%	82%	83%	81%	82%	78%	75%	79%	45%	71%	70%	70%	71%	62%	75%	77%				

Good performance and athletic type. Handy birth to growth and positive fats. Top 6% for days to calving. Suitable for heifers.

Purchaser..... Price.....

14 HAZELDEAN T1801 (Nat) PV APR AMFU NHFU CAFU DDFU Born: 14/08/2022 Society Id: NHZ22T1801

HAZELDEAN JAIPUR J140
HAZELDEAN MAGNUM M586
HAZELDEAN H356
Sire: HAZELDEAN Q1580
RENNYLEA EDMUND E11
HAZELDEAN L32
HAZELDEAN J9

CONNELLY COMRADE 1385
HAZELDEAN N123
HAZELDEAN J112
Dam: HAZELDEAN Q1634
HAZELDEAN HELLBENDER H696
HAZELDEAN K1011
G502

Front	Rear	Front	Rear	Front	Rear	MUSCLE	TEMP.	SHEATH
7	6	6	6	5	5	C	2	4

Structural EBV's			
TACE	ANGLE	CLAW	LEGS
	+1.16	+0.86	1.12
ACC%	61%	61%	59%

TRANSTASMAN ANGUS CATTLE EVALUATION - JUNE 2024																						
TACE	CALVING EASE				GROWTH & MATERNAL				FERTILITY		CWT	CARCASE					Doc	Angus Index	Dom	Heavy Grain	Heavy Grass	
	DIR	DTRS	GL	B Wt	200	400	600	MWt	Milk	SS	DC	C Wt	EMA	RIB	RUMP	RBY%	IMF%	Doc.				
EBV	+8.2	+3.5	-10.2	+0.2	+37	+83	+108	+87	+18	+2.5	-7.8	+59	+7.7	-0.4	-2.6	+1.4	+2.9	+2	+222	+193	+270	+213
ACC%	64%	52%	82%	81%	82%	80%	81%	77%	73%	79%	42%	70%	69%	69%	70%	60%	74%	76%				

Athletic heifer bull with ample calving ease and top 4% days to calving. Top 32% for both IMF and EMA. Suitable for heifers.

Purchaser..... Price.....

15 HAZELDEAN T1025 (AI) PV APR AMFU NHFU CAFU DD50% Born: 06/08/2022 Society Id: NHZ22T1025

TE MANIA BERKLEY B1
HAZELDEAN F1023
HAZELDEAN B723
Sire: HAZELDEAN Q1229
G A R PROPHET
HAZELDEAN J823
HAZELDEAN G724

HAZELDEAN F1023
HAZELDEAN N366
HAZELDEAN L82
Dam: HAZELDEAN Q1785
HAZELDEAN JAIPUR J140
HAZELDEAN M159
HAZELDEAN K866

Front	Rear	Front	Rear	Front	Rear	MUSCLE	TEMP.	SHEATH
6	6	6	6	5	5	C+	3	4

Structural EBV's			
TACE	ANGLE	CLAW	LEGS
	+0.96	+0.76	0.7
ACC%	57%	57%	56%

TRANSTASMAN ANGUS CATTLE EVALUATION - JUNE 2024																						
TACE	CALVING EASE				GROWTH & MATERNAL				FERTILITY		CWT	CARCASE					Doc	Angus Index	Dom	Heavy Grain	Heavy Grass	
	DIR	DTRS	GL	B Wt	200	400	600	MWt	Milk	SS	DC	C Wt	EMA	RIB	RUMP	RBY%	IMF%	Doc.				
EBV	+3.6	+7.2	-7.6	+2.6	+43	+81	+101	+74	+21	+3.7	-5	+52	+3.7	-2.1	-1.6	-0.3	+5.3	+16	+203	+164	+277	+190
ACC%	68%	57%	84%	83%	84%	82%	83%	79%	75%	81%	45%	73%	72%	72%	73%	63%	77%	79%				

Square and well balanced heifer bull with top 3% of the breed for IMF. Top 9% for scrotal size and very good calving ease. Suitable for heifers.

Purchaser..... Price.....

Top 5% Top 10% Top 30%

Ranking in Angus Aust. Mid June 2024

Proven Genetic Performance

www.hazeldean.com.au

NEW ENGLAND 2024



SALE BULLS

16 HAZELDEAN T487 (AI) PV APR AMFU NHFU CAFU DDFU Born: 31/07/2022 Society Id: NHZ22T487

HAZELDEAN JAIPUR J140 TUWHARETOA REGENT D145
 HAZELDEAN MAGNUM M586 RENNYLEA NORJ474
 HAZELDEAN H356 RENNYLEA C310
Sire: HAZELDEAN Q1580 **Dam: HAZELDEAN Q483**
 RENNYLEA EDMUND E11 RENNYLEA EDMUND E11
 HAZELDEAN L32 HAZELDEAN K722
 HAZELDEAN J9 HAZELDEAN F426

Front	Rear	Front	Rear	Front	Rear	MUSCLE	TEMP.	SHEATH
6	6	6	6	5	6	C	2	5

Structural EBV's			
TACE	ANGLE	CLAW	LEGS
	+0.86	+0.4	0.98
ACC%	63%	63%	61%

TRANSTASMAN ANGUS CATTLE EVALUATION - JUNE 2024																							
TACE	CALVING EASE				GROWTH & MATERNAL				FERTILITY		CWT	CARCASE					Doc	Angus Index	Dom	Heavy Grain	Heavy Grass		
	DIR	DTRS	GL	B Wt	200	400	600	MWt	Milk	SS	DC	C Wt	EMA	RIB	RUMP	RBV%	IMF%	Doc.					
EBV	+4.2	+7.6	-4.8	+1.9	+45	+84	+108	+126	+19	+2.3	-8.5	+64	+3.2	-3.4	-5.1	+1.5	+2.9	+9	+203	+182	+247	+190	
ACC%	65%	55%	83%	82%	83%	81%	81%	78%	74%	79%	44%	71%	70%	70%	71%	62%	75%	77%					

Well balanced heifer bull, top 2% for claw set and days to calving. Very sound and fertile. Plenty of calving ease. Suitable for heifers.

Purchaser..... Price.....

17 HAZELDEAN T2133 (Nat) PV APR AMFU NHFU CAFU DDFU Born: 26/08/2022 Society Id: NHZ22T2133

RENNYLEA C511 TUWHARETOA REGENT D145
 RENNYLEA NORH708 RENNYLEA NORJ474
 RENNYLEA E176 RENNYLEA C310
Sire: HAZELDEAN R191 **Dam: HAZELDEAN Q594**
 HAZELDEAN KATZEN K416 RENNYLEA EDMUND E11
 HAZELDEAN N521 HAZELDEAN K570
 HAZELDEAN H477 HAZELDEAN H1250

Front	Rear	Front	Rear	Front	Rear	MUSCLE	TEMP.	SHEATH
6	6	6	6	5	6	C+	1	4

Structural EBV's			
TACE	ANGLE	CLAW	LEGS
	+1.02	+0.8	0.78
ACC%	61%	61%	60%

TRANSTASMAN ANGUS CATTLE EVALUATION - JUNE 2024																							
TACE	CALVING EASE				GROWTH & MATERNAL				FERTILITY		CWT	CARCASE					Doc	Angus Index	Dom	Heavy Grain	Heavy Grass		
	DIR	DTRS	GL	B Wt	200	400	600	MWt	Milk	SS	DC	C Wt	EMA	RIB	RUMP	RBV%	IMF%	Doc.					
EBV	-3	+3.2	-2.4	+3.5	+36	+73	+97	+81	+12	+0.5	-8.6	+59	+2	+2	+2.5	-0.6	+5.7	+13	+207	+166	+270	+197	
ACC%	64%	54%	82%	80%	82%	80%	80%	77%	73%	78%	43%	69%	69%	69%	70%	60%	74%	75%					

Moderate frame with depth at the same time. Top 2% for IMF and also days to calving. Very positive fats along with top 2% for IMF. Suitable for heifers.

Purchaser..... Price.....

18 HAZELDEAN T1191 (AI) PV APR AMFU NHFU CAFU DDFU Born: 15/08/2022 Society Id: NHZ22T1191

HAZELDEAN JAIPUR J140 ARDROSSAN EQUATOR A241
 HAZELDEAN MAGNUM M586 HAZELDEAN JAIPUR J140
 HAZELDEAN H356 HAZELDEAN C33
Sire: HAZELDEAN Q1580 **Dam: HAZELDEAN Q1908**
 RENNYLEA EDMUND E11 TC TOTAL 410
 HAZELDEAN L32 HAZELDEAN H308
 HAZELDEAN J9 HAZELDEAN THEO Y1254

Front	Rear	Front	Rear	Front	Rear	MUSCLE	TEMP.	SHEATH
6	6	6	6	5	6	C	1	3

Structural EBV's			
TACE	ANGLE	CLAW	LEGS
	+0.9	+0.82	0.92
ACC%	63%	63%	60%

TRANSTASMAN ANGUS CATTLE EVALUATION - JUNE 2024																							
TACE	CALVING EASE				GROWTH & MATERNAL				FERTILITY		CWT	CARCASE					Doc	Angus Index	Dom	Heavy Grain	Heavy Grass		
	DIR	DTRS	GL	B Wt	200	400	600	MWt	Milk	SS	DC	C Wt	EMA	RIB	RUMP	RBV%	IMF%	Doc.					
EBV	+6.6	+6.2	-7.8	+1.5	+44	+81	+97	+86	+14	+2	-9	+54	+2.7	+0.9	0	+0.8	+3.1	+40	+241	+215	+299	+225	
ACC%	66%	55%	83%	82%	83%	81%	82%	78%	74%	80%	47%	72%	72%	71%	72%	63%	76%	78%					

Heifer bull with thickness, top 1% for days to calving and top 3% for docility. Suitable for heifers.

Purchaser..... Price.....

Top 5% **Top 10%** **Top 30%**
 Ranking in Angus Aust. Mid June 2024



HAZELDEAN
LITCHFIELD
EST 1865

NEW ENGLAND 2024

SALE BULLS

19 HAZELDEAN T1194 (AI) PV APR AMFU NHFU CAFU DDFU Born: 15/08/2022 Society Id: NH222T1194

G A R PROPHET
BALDRIDGE BEAST MODE B074
BALDRIDGE ISABEL Y69
Sire: HAZELDEAN POWER UP R274
KM BROKEN BOW 002
HAZELDEAN K97
HAZELDEAN F103

HAZELDEAN JAIPUR J140
HAZELDEAN M806
HAZELDEAN F461
Dam: HAZELDEAN P1280
HAZELDEAN K61
HAZELDEAN M328
HAZELDEAN K59

Front	Rear	Front	Rear	Front	Rear	MUSCLE	TEMP.	SHEATH
6	6	5	5	4	5	C+	1	4

Structural EBV's			
TACE	ANGLE	CLAW	LEGS
	+0.76	+0.9	0.92
ACC%	67%	67%	64%

TRANSTASMAN ANGUS CATTLE EVALUATION - JUNE 2024																						
TACE	CALVING EASE				GROWTH & MATERNAL					FERTILITY		CWT	CARCASE					Doc	Angus Index	Dom	Heavy Grain	Heavy Grass
	DIR	DTRS	GL	B Wt	200	400	600	MWt	Milk	SS	DC	C Wt	EMA	RIB	RUMP	RBV%	IMF%	Doc.				
EBV	+1.3	+4.9	+0.8	+2.3	+59	+103	+135	+125	+24	+3.3	-3.4	+70	+2.2	-2.9	-5.5	0	+3.3	+27	+181	+145	+248	+161
ACC%	62%	62%	81%	81%	82%	79%	80%	76%	71%	78%	40%	68%	67%	66%	68%	58%	72%	75%				

Lots of functional commercial traits highlighted here in EBVS, sired by the sale topping Hazeldean R74 Power Up. Really nice birth to growth spread, very usable for heifers or cows.

Purchaser..... Price.....

20 HAZELDEAN T1224 (AI) SV APR AMFU NHFU CAFU DDFU Born: 31/08/2022 Society Id: NH222T1224

HAZELDEAN JAIPUR J140
HAZELDEAN M182
HAZELDEAN K807
Sire: HAZELDEAN R844
EF COMPLEMENT 8088
HAZELDEAN P329
HAZELDEAN L727

TE MANIA BERKLEY B1
HAZELDEAN F1023
HAZELDEAN B723
Dam: HAZELDEAN P413
HAZELDEAN KEMAL K467
HAZELDEAN M905
HAZELDEAN H379

Front	Rear	Front	Rear	Front	Rear	MUSCLE	TEMP.	SHEATH
7	6	6	6	4	5	C+	1	4

Structural EBV's			
TACE	ANGLE	CLAW	LEGS
	+1.02	+0.56	1.2
ACC%	66%	66%	64%

TRANSTASMAN ANGUS CATTLE EVALUATION - JUNE 2024																						
TACE	CALVING EASE				GROWTH & MATERNAL					FERTILITY		CWT	CARCASE					Doc	Angus Index	Dom	Heavy Grain	Heavy Grass
	DIR	DTRS	GL	B Wt	200	400	600	MWt	Milk	SS	DC	C Wt	EMA	RIB	RUMP	RBV%	IMF%	Doc.				
EBV	+2	-5.2	-4.4	+2.7	+52	+101	+133	+100	+26	+2.9	-5.9	+77	+2.8	0	-0.2	-0.3	+4.4	+29	+222	+177	+300	+210
ACC%	63%	52%	81%	80%	82%	80%	80%	76%	72%	78%	41%	69%	68%	68%	69%	58%	73%	75%				

Long bodied with high performance and great future. Very good quality! EBVs are also great to look at! Better than breed average for 15 traits. Top 9% for IMF, top 5% for milk. Note : a little white on flank. Suitable for heifers.

Purchaser..... Price.....

21 HAZELDEAN T637 (AI) SV APR AMFU NHFU CAFU DDFU Born: 01/08/2022 Society Id: NH222T637

G A R MOMENTUM USA17354145
LAWSONS MOMENTOUS M518
LAWSONS AFRICA H229 VLYH229
Sire: MURDEDUKE QUARTERBACK Q011
CARABAR DOCKLANDS D62
MURDEDUKE BARUNDAH N026
MURDEDUKE BARUNAH C191

ARDROSSAN EQUATOR A241
HAZELDEAN JAIPUR J140
HAZELDEAN C33
Dam: HAZELDEAN M115
LAWSONS TANK VLY B1155
HAZELDEAN J752
HAZELDEAN G301

Front	Rear	Front	Rear	Front	Rear	MUSCLE	TEMP.	SHEATH
7	6	6	6	5	6	C	1	4

Structural EBV's			
TACE	ANGLE	CLAW	LEGS
	+0.88	+0.7	1.18
ACC%	71%	71%	70%

TRANSTASMAN ANGUS CATTLE EVALUATION - JUNE 2024																						
TACE	CALVING EASE				GROWTH & MATERNAL					FERTILITY		CWT	CARCASE					Doc	Angus Index	Dom	Heavy Grain	Heavy Grass
	DIR	DTRS	GL	B Wt	200	400	600	MWt	Milk	SS	DC	C Wt	EMA	RIB	RUMP	RBV%	IMF%	Doc.				
EBV	+4.6	+3.4	-10.8	+4.2	+51	+94	+117	+103	+19	+2.8	-5.6	+73	+9.1	+1.5	+0.8	+0.6	+2.2	+31	+225	+192	+293	+209
ACC%	69%	59%	83%	82%	83%	81%	82%	79%	75%	80%	47%	72%	71%	71%	72%	63%	75%	78%				

Bigger frame, covers the ground and has a strong topline. A very well balanced bull, he is better than breed average for 18 traits - which is very hard to do. We are very glad we used as a worker in 2023 joining. Suitable for heifers.

Purchaser..... Price.....

Top 5% **Top 10%** **Top 30%**

Ranking in Angus Aust. Mid June 2024

Proven Genetic Performance

www.hazeldean.com.au



HAZELDEAN
LITCHFIELD
EST 1865

NEW ENGLAND 2024

SALE BULLS

22 HAZELDEAN T145 (AI) PV APR AMFU NHFU CAFU DDFU Born: **13/07/2022**
Society Id: **NH22T145**

A A R TEN X 7008 S A
V A R DISCOVERY 2240
DEER VALLEY RITA 0308
Sire: **LANDFALL NEW GROUND TFAN90**
MATAURI REALITY 839
LANDFALL ELSA L88
LANDFALL ELSA J139

TE MANIA BERKLEY B1
HAZELDEAN F1023
HAZELDEAN B723
Dam: **HAZELDEAN R1641**
G A R PROPHET
HAZELDEAN J823
HAZELDEAN G724

Front	Rear	Front	Rear	Front	Rear	MUSCLE	TEMP.	SHEATH
6	6	6	6	5	5	C+	1	5

Structural EBV's			
TACE	ANGLE	CLAW	LEGS
	+0.6	+0.44	0.82
ACC%	72%	72%	70%

TRANSTASMAN ANGUS CATTLE EVALUATION - JUNE 2024																						
TACE	CALVING EASE				GROWTH & MATERNAL				FERTILITY			CWT	CARCASE					Doc	Angus Index	Dom	Heavy Grain	Heavy Grass
	DIR	DTRS	GL	B Wt	200	400	600	MWt	Milk	SS	DC	C Wt	EMA	RIB	RUMP	RBV%	IMF%	Doc.				
EBV	+5.4	+2.6	-5.4	+2	+49	+97	+126	+92	+24	+3.7	-4	+63	+4.9	+0.2	+0.7	-0.4	+3.8	+37	+211	+167	+287	+198
ACC%	70%	62%	83%	82%	83%	82%	82%	80%	76%	80%	48%	72%	71%	71%	72%	65%	75%	79%				

Very sound structure and feet - structural EBVs back this up! Top 1% for both claw and foot angle. Appealing birth to growth with top 9% for milk and scrotal size EBV. Top 6% for docility. Lots to like from the New Ground son. Suitable for heifers. Used as a worker in 2023 joining.

Purchaser..... Price.....

23 HAZELDEAN T1317 (AI) PV APR AMFU NHFU CAFU DDFU Born: **13/07/2022**
Society Id: **NH22T1317**

G A R PROPHET
TE MANIA KIRBY K138
TE MANIA H17
Sire: **TE MANIA QARARA Q514**
TE MANIA JOE J963
TE MANIA BARUNAH L537
TE MANIA BARUNAH H219

G A R PROPHET
BALDRIDGE BEAST MODE B074
BALDRIDGE ISABEL Y69
Dam: **HAZELDEAN R229**
MILLWILLAH COMPLEMENT NJWK108
HAZELDEAN N587
HAZELDEAN H838

Front	Rear	Front	Rear	Front	Rear	MUSCLE	TEMP.	SHEATH
7	6	6	7	5	6	C	1	4

Structural EBV's			
TACE	ANGLE	CLAW	LEGS
	+1.06	+0.72	1.1
ACC%	67%	67%	65%

TRANSTASMAN ANGUS CATTLE EVALUATION - JUNE 2024																						
TACE	CALVING EASE				GROWTH & MATERNAL				FERTILITY			CWT	CARCASE					Doc	Angus Index	Dom	Heavy Grain	Heavy Grass
	DIR	DTRS	GL	B Wt	200	400	600	MWt	Milk	SS	DC	C Wt	EMA	RIB	RUMP	RBV%	IMF%	Doc.				
EBV	+6.1	+7.9	-5.9	+1.8	+54	+95	+118	+82	+25	+2.8	-5.8	+74	+3.1	+0.1	+0.1	-0.5	+4.4	+12	+244	+200	+333	+228
ACC%	66%	56%	83%	82%	83%	81%	82%	78%	73%	80%	44%	70%	70%	69%	71%	62%	74%	78%				

Very good topline, easy doing type. Calving ease deluxe! Top 5% for milk. Top 9% for IMF and attractive indexes. Used as a worker in 2023 joining. Suitable for heifers.

Purchaser..... Price.....

24 HAZELDEAN T1626 (Nat) PV APR AMFU NHFU CAFU DDFU Born: **01/08/2022**
Society Id: **NH22T1626**

BOWMONT JACKPOT SRKJ310
HAZELDEAN M187
HAZELDEAN K622
Sire: **HAZELDEAN R898**
HAZELDEAN F1023
HAZELDEAN P514
HAZELDEAN M331

ARDROSSAN JUSTICE NAQJ93
HAZELDEAN P57
HAZELDEAN D170
Dam: **HAZELDEAN R487**
HAZELDEAN BENEDICT B569
HAZELDEAN G895
HAZELDEAN D589

Front	Rear	Front	Rear	Front	Rear	MUSCLE	TEMP.	SHEATH
7	6	6	6	5	5	C	2	5

Structural EBV's			
TACE	ANGLE	CLAW	LEGS
	+0.98	+0.96	1.12
ACC%	64%	64%	60%

TRANSTASMAN ANGUS CATTLE EVALUATION - JUNE 2024																						
TACE	CALVING EASE				GROWTH & MATERNAL				FERTILITY			CWT	CARCASE					Doc	Angus Index	Dom	Heavy Grain	Heavy Grass
	DIR	DTRS	GL	B Wt	200	400	600	MWt	Milk	SS	DC	C Wt	EMA	RIB	RUMP	RBV%	IMF%	Doc.				
EBV	+8	+7.4	-3.7	+3.8	+48	+96	+131	+100	+30	+4.1	-8.2	+67	+3.3	0	-2.3	-0.5	+4.8	+28	+236	+191	+301	+229
ACC%	61%	49%	80%	80%	81%	79%	80%	76%	70%	77%	37%	67%	66%	66%	67%	57%	71%	74%				

Very good quality! Capacious type with real volume and scope. Top 4% for days to calving and scrotal size. Top 6% for IMF. Handy dandy birth to growth! One not to miss. Used as a worker in 2023 joining. Suitable for heifers.

Purchaser..... Price.....

Top 5% **Top 10%** **Top 30%**
Ranking in Angus Aust. Mid June 2024

Proven Genetic Performance

www.hazeldean.com.au

NEW ENGLAND 2024



SALE BULLS

25 HAZELDEAN T371 (AI) PV APR AMFU NHFU CAFU DDFU Born: 28/07/2022 Society Id: NHZ22T371

HAZELDEAN JAIPUR J140
HAZELDEAN MAGNUM M586
HAZELDEAN H356
Sire: HAZELDEAN Q319
HAZELDEAN JALANA J1510
HAZELDEAN L1175
HAZELDEAN H1603

TE MANIA EMPEROR E343
BURENDA LADD L189
BURENDA DELIGHT H809
Dam: BURENDA JEMIMA Q775
TE MANIA DAQUIRI D19
BURENDA JEMIMA J311
RENNYLEA E511

Front	Rear	Front	Rear	Front	Rear	MUSCLE	TEMP.	SHEATH
7	6	6	6	5	5	C+	1	4

Structural EBV's			
TACE	ANGLE	CLAW	LEGS
	+1.14	+0.9	1.1
ACC%	59%	60%	57%

TRANSTASMAN ANGUS CATTLE EVALUATION - JUNE 2024																							
TACE	CALVING EASE				GROWTH & MATERNAL				FERTILITY		CWT	CARCASE					Doc	Angus Index	Dom	Heavy Grain	Heavy Grass		
	DIR	DTRS	GL	B Wt	200	400	600	MWt	Milk	SS	DC	C Wt	EMA	RIB	RUMP	RBV%	IMF%	Doc.					
EBV	-1.4	+6.1	-8.9	+5.7	+65	+115	+154	+163	+18	+2.6	-9.1	+88	+9	-2.7	-5	+1.1	+3	+50	+257	+220	+320	+246	
ACC%	66%	56%	84%	83%	84%	82%	82%	79%	75%	80%	44%	72%	71%	71%	72%	63%	76%	79%					

Very powerful young Q319 son, exhibiting all the traits his dad carries. Top 3% for 600d growth. Top 1% for docility and days to calving with volume and frame. Used as a worker in 2023 joining.

Purchaser..... Price.....

26 HAZELDEAN T979 (AI) SV APR AMFU NHFU CAFU DDFU Born: 06/08/2022 Society Id: NHZ22T979

ARDROSSAN EQUATOR A241
HAZELDEAN JAIPUR J140
HAZELDEAN C33
Sire: HAZELDEAN Q1237
CARABAR DOCKLANDS D62
HAZELDEAN J447
HAZELDEAN D684

ARDROSSAN EQUATOR A241
BOWMONT JACKPOT SRKJ310
ARDROSSAN WILCOOLA Z31
Dam: HAZELDEAN M156
LAWSONS TANK VLY B1155
HAZELDEAN K1107
HAZELDEAN G1039

Front	Rear	Front	Rear	Front	Rear	MUSCLE	TEMP.	SHEATH
6	6	6	6	5	6	C	1	5

Structural EBV's			
TACE	ANGLE	CLAW	LEGS
	+1.14	+0.62	1.32
ACC%	63%	63%	60%

TRANSTASMAN ANGUS CATTLE EVALUATION - JUNE 2024																							
TACE	CALVING EASE				GROWTH & MATERNAL				FERTILITY		CWT	CARCASE					Doc	Angus Index	Dom	Heavy Grain	Heavy Grass		
	DIR	DTRS	GL	B Wt	200	400	600	MWt	Milk	SS	DC	C Wt	EMA	RIB	RUMP	RBV%	IMF%	Doc.					
EBV	+5.9	+6.6	-2.8	+2.6	+53	+95	+132	+105	+17	+3.6	-6.4	+81	+5.4	+0.7	+2	-0.2	+4.1	+17	+249	+196	+325	+240	
ACC%	66%	56%	84%	83%	84%	82%	82%	79%	75%	80%	46%	72%	71%	71%	72%	63%	75%	78%					

A larger frame with scope. Very appealing set of EBVs, highlights are top 6% for claw, top 18% for calving ease direct, top 12% for IMF. Indexes are also very appealing. Used as a worker in 2023 joining. Suitable for heifers.

Purchaser..... Price.....

27 HAZELDEAN T219 (AI) PV APR AMFU NHFU CAFU DDFU Born: 21/07/2022 Society Id: NHZ22T219

A A R TEN X 7008 S A
V A R DISCOVERY 2240
DEER VALLEY RITA 0308
Sire: LANDFALL NEW GROUND TFAN90
MATAURI REALITY 839
LANDFALL ELSA L88
LANDFALL ELSA J139

HAZELDEAN KIBBITZ K553
HAZELDEAN P926
HAZELDEAN G50
Dam: HAZELDEAN R711
JMB TRACTION USA17262374
HAZELDEAN N1090
HAZELDEAN H742

Front	Rear	Front	Rear	Front	Rear	MUSCLE	TEMP.	SHEATH
7	6	6	6	5	6	C	2	5

Structural EBV's			
TACE	ANGLE	CLAW	LEGS
	+0.94	+1.12	1.26
ACC%	69%	69%	67%

TRANSTASMAN ANGUS CATTLE EVALUATION - JUNE 2024																							
TACE	CALVING EASE				GROWTH & MATERNAL				FERTILITY		CWT	CARCASE					Doc	Angus Index	Dom	Heavy Grain	Heavy Grass		
	DIR	DTRS	GL	B Wt	200	400	600	MWt	Milk	SS	DC	C Wt	EMA	RIB	RUMP	RBV%	IMF%	Doc.					
EBV	+2.1	+1.4	-2.4	+2.4	+51	+100	+129	+117	+13	+3.6	-2.4	+67	+8.5	+1.6	+0.1	+0.4	+3.6	+20	+199	+159	+273	+186	
ACC%	68%	59%	82%	81%	82%	81%	81%	79%	75%	79%	44%	70%	69%	69%	70%	62%	73%	77%					

High performance with frame and length. Very good birth to growth. Top 18% for birth weight to top 26% for 400d growth. Very appealing IMF and EMA also. Note birth mark on neck. Used as a worker in 2023 joining. Suitable for heifers.

Purchaser..... Price.....

Top 5% **Top 10%** **Top 30%**
Ranking in Angus Aust. Mid June 2024

Proven Genetic Performance

www.hazeldean.com.au

NEW ENGLAND 2024



SALE BULLS

28 HAZELDEAN T1033 (AI) PV HBR AMFU NHFU CAFU DD3% Born: 07/08/2022
Society Id: NHZ22T1033

G A R PROPHET
BALDRIDGE BEAST MODE B074
BALDRIDGE ISABEL Y69
Sire: HAZELDEAN POWER UP R274
KM BROKEN BOW 002
HAZELDEAN K97
HAZELDEAN F103

CONNELLY BLACK GRANITE
QHF WWA BLACK ONYX 5Q11
WILKS BLACKCAP 0D82
Dam: BURENDA NEW DESIGN Q360
TE MANIA EMPEROR E343
BURENDA NEW DESIGN L232
BURENDA NEW DESIGN H433

Front	Rear	Front	Rear	MUSCLE	TEMP.	SHEATH		
7	6	6	6	5	5	C+	1	4

Structural EBV's			
TACE	ANGLE	CLAW	LEGS
	+0.72	+0.98	0.82
ACC%	67%	67%	64%

TRANSTASMAN ANGUS CATTLE EVALUATION - JUNE 2024																							
TACE	CALVING EASE				GROWTH & MATERNAL				FERTILITY		CWT	CARCASE					Doc	Angus Index	Dom	Heavy Grain	Heavy Grass		
	DIR	DTRS	GL	B Wt	200	400	600	MWt	Milk	SS	DC	C Wt	EMA	RIB	RUMP	RBV%	IMF%	Doc.					
EBV	-6.2	+1.4	-4.1	+5.7	+82	+143	+189	+198	+14	+4.1	-5	+93	-1.2	-3.2	-5.8	-0.7	+1.5	+19	+186	+160	+246	+170	
ACC%	65%	55%	81%	81%	82%	80%	81%	77%	73%	79%	41%	68%	68%	67%	69%	59%	72%	76%					

Wide stance with a big frame. Eye catching type. Top 1% for 200d, 400d, 600d growth. Top 5% for scrotal size and foot angle EBV which will help with a larger framed bulls structure. Used as a worker in 2023 joining.

Purchaser..... Price.....

29 HAZELDEAN T1430 (AI) PV APR AMFU NHFU CAFU DDFU Born: 17/07/2022
Society Id: NHZ22T1430

TE MANIA CALAMUS C46
TE MANIA FOE F734
TE MANIA DANDLOO D700
Sire: CHILTERN PARK MOE M6
HIDDEN VALLEY TIMEOUT A45
STRATHEWEN TIMEOUT JADE F15
STRATHEWEN 1407 JADE C05

HAZELDEAN JAIPUR J140
HAZELDEAN M182
HAZELDEAN K807
Dam: HAZELDEAN R382
KO DYNAMITE F80(AI)(ET) NZCF80
HAZELDEAN J1025
HAZELDEAN E336

Front	Rear	Front	Rear	MUSCLE	TEMP.	SHEATH		
6	6	6	6	5	5	C	1	4

Structural EBV's			
TACE	ANGLE	CLAW	LEGS
	+1.04	+0.4	1.02
ACC%	70%	70%	69%

TRANSTASMAN ANGUS CATTLE EVALUATION - JUNE 2024																							
TACE	CALVING EASE				GROWTH & MATERNAL				FERTILITY		CWT	CARCASE					Doc	Angus Index	Dom	Heavy Grain	Heavy Grass		
	DIR	DTRS	GL	B Wt	200	400	600	MWt	Milk	SS	DC	C Wt	EMA	RIB	RUMP	RBV%	IMF%	Doc.					
EBV	-3.3	+2.7	+0.2	+4.2	+50	+95	+122	+77	+25	+3.1	-6.1	+83	+3.7	+2.2	+5.1	-0.3	+2.1	+35	+223	+183	+293	+209	
ACC%	68%	57%	82%	81%	82%	80%	81%	78%	74%	79%	45%	72%	71%	71%	72%	63%	75%	76%					

A very docile and sound Moe son who looks like he will grow into a tough worker bull. Top 8% for docility and milk Ebvs. Excellent fats and top 1% for claw set EBV. Used as a worker in 2023 joining. Suitable for heifers.

Purchaser..... Price.....

30 HAZELDEAN T2358 (Nat) SV APR AMFU NHFU CAFU DDFU Born: 08/09/2022
Society Id: NHZ22T2358

H P C A INTENSITY
RENNYLEA NORL519
RENNYLEA H414
Sire: HAZELDEAN R158
MUSGRAVE MEDIATOR 29AN1988
HAZELDEAN N711
HAZELDEAN H761

PLATTEMERE WEIGH UP K360
HAZELDEAN M670
HAZELDEAN H1001
Dam: HAZELDEAN P136
CARABAR DOCKLANDS D62
HAZELDEAN K93
HAZELDEAN A191

Front	Rear	Front	Rear	MUSCLE	TEMP.	SHEATH		
6	6	6	6	5	5	C+	1	5

Structural EBV's			
TACE	ANGLE	CLAW	LEGS
	+0.98	+0.78	0.94
ACC%	65%	65%	61%

TRANSTASMAN ANGUS CATTLE EVALUATION - JUNE 2024																							
TACE	CALVING EASE				GROWTH & MATERNAL				FERTILITY		CWT	CARCASE					Doc	Angus Index	Dom	Heavy Grain	Heavy Grass		
	DIR	DTRS	GL	B Wt	200	400	600	MWt	Milk	SS	DC	C Wt	EMA	RIB	RUMP	RBV%	IMF%	Doc.					
EBV	+1.2	+4	-4.2	+4.6	+57	+104	+135	+108	+22	+2.8	-3.7	+72	+12.2	-2.3	-5.4	+1.7	+2.2	+22	+228	+191	+296	+213	
ACC%	63%	53%	81%	81%	82%	80%	80%	77%	72%	77%	40%	68%	67%	67%	68%	58%	72%	75%					

Good feet , a super sound overall package. Top 17% for 400d growth. Top 5% EMA, top 4% retail beef yield. Breed average for IMF and docility. Suitable for heifers.

Purchaser..... Price.....

Top 5% **Top 10%** **Top 30%**
Ranking in Angus Aust. Mid June 2024

Proven Genetic Performance



HAZELDEAN
LITCHFIELD
EST 1865

NEW ENGLAND 2024

SALE BULLS

31 HAZELDEAN T1343 (AI) PV APR AMFU NHFU CAFU DDFU Born: 15/07/2022 Society Id: NHZ22T1343

G A R PROPHET
BALDRIDGE BEAST MODE B074
BALDRIDGE ISABEL Y69
Sire: CLUNIE RANGE PLANTATION P392
THOMAS UP RIVER 1614
CLUNIE RANGE NAOMI M516
CLUNIE RANGE NAOMI H5

HAZELDEAN JAIPUR J140
HAZELDEAN P849
HAZELDEAN L447
Dam: HAZELDEAN R1386
DUNOON GOTHIC BHRG531
HAZELDEAN L999
HAZELDEAN H1031

Front	Rear	Front	Rear	Front	Rear	MUSCLE	TEMP.	SHEATH
6	6	6	6	5	5	C+	1	5

Structural EBV's			
TACE	ANGLE	CLAW	LEGS
	+0.9	+0.6	1.02
ACC%	68%	68%	65%

TRANSTASMAN ANGUS CATTLE EVALUATION - JUNE 2024																						
TACE	CALVING EASE				GROWTH & MATERNAL				FERTILITY		CWT	CARCASE					Doc	Angus Index	Dom	Heavy Grain	Heavy Grass	
	DIR	DTRS	GL	B Wt	200	400	600	MWt	Milk	SS	DC	C Wt	EMA	RIB	RUMP	RBY%	IMF%	Doc.				
EBV	+7.9	+3.1	-4.5	+2.9	+57	+97	+118	+90	+27	+4.1	-3.1	+68	+3.4	-1.3	-3.4	+0.2	+3.1	+11	+203	+169	+281	+182
ACC%	66%	55%	83%	82%	83%	81%	81%	78%	73%	79%	41%	71%	70%	70%	71%	61%	75%	77%				

Lots of depth coming from the Beast Mode pedigree. Ample calving ease - top 7% for calving ease direct. Good IMF too. Real depth and square bodied. Used as a worker in 2023 joining. Suitable for heifers.

Purchaser..... Price.....

32 HAZELDEAN T1006 (AI) PV APR AMFU NHFU CAFU DDFU Born: 06/08/2022 Society Id: NHZ22T1006

G A R INGENUITY
H P C A INTENSITY
G A R PREDESTINED 287L
Sire: RENNYLEA NATIONWIDE N432
TE MANIA BERKLEY B1
RENNYLEA H367
RENNYLEA F228

RENNYLEA EDMUND E11
HAZELDEAN KATZEN K416
HAZELDEAN H342
Dam: HAZELDEAN P241
HAZELDEAN JALANA J1510
HAZELDEAN L1224
HAZELDEAN H1628

Front	Rear	Front	Rear	Front	Rear	MUSCLE	TEMP.	SHEATH
6	5	5	5	5	6	C+	2	4

Structural EBV's			
TACE	ANGLE	CLAW	LEGS
	+0.94	+0.88	1.02
ACC%	66%	66%	66%

TRANSTASMAN ANGUS CATTLE EVALUATION - JUNE 2024																						
TACE	CALVING EASE				GROWTH & MATERNAL				FERTILITY		CWT	CARCASE					Doc	Angus Index	Dom	Heavy Grain	Heavy Grass	
	DIR	DTRS	GL	B Wt	200	400	600	MWt	Milk	SS	DC	C Wt	EMA	RIB	RUMP	RBY%	IMF%	Doc.				
EBV	+8.2	+6.6	-8.2	+2.2	+53	+95	+113	+95	+21	+1.2	-7.2	+65	+2.6	+4.2	+3.6	-0.9	+3.2	+33	+239	+204	+324	+220
ACC%	66%	57%	83%	82%	83%	81%	81%	78%	74%	79%	45%	71%	71%	70%	71%	62%	75%	77%				

You can see why we used this guy as a yearling. Easy to look at with a good frame, well put together. Top 7% for days to calving and gestation length. Very positive fats for those herds looking to improve in this area. Outstanding foot structure. Used as a worker in 2023 joining. Suitable for heifers.

Purchaser..... Price.....

33 HAZELDEAN T856 (AI) PV APR AMFU NHFU CAFU DDFU Born: 04/08/2022 Society Id: NHZ22T856

G A R INGENUITY
H P C A INTENSITY
G A R PREDESTINED 287L
Sire: RENNYLEA NATIONWIDE N432
TE MANIA BERKLEY B1
RENNYLEA H367
RENNYLEA F228

HAZELDEAN KLEIN K609
HAZELDEAN M1087
HAZELDEAN NEW DESIGN E786
Dam: HAZELDEAN P1351
RENNYLEA EDMUND E11
HAZELDEAN L402
HAZELDEAN J611

Front	Rear	Front	Rear	Front	Rear	MUSCLE	TEMP.	SHEATH
6	6	6	6	5	5	C+	2	4

Structural EBV's			
TACE	ANGLE	CLAW	LEGS
	+1.06	+0.92	1.06
ACC%	68%	66%	66%

TRANSTASMAN ANGUS CATTLE EVALUATION - JUNE 2024																						
TACE	CALVING EASE				GROWTH & MATERNAL				FERTILITY		CWT	CARCASE					Doc	Angus Index	Dom	Heavy Grain	Heavy Grass	
	DIR	DTRS	GL	B Wt	200	400	600	MWt	Milk	SS	DC	C Wt	EMA	RIB	RUMP	RBY%	IMF%	Doc.				
EBV	+4.7	+5.7	-7	+2.7	+55	+99	+120	+110	+17	+2.6	-3.9	+70	+6.9	-1.1	-1.6	+0.7	+1.8	+40	+208	+181	+276	+188
ACC%	65%	56%	82%	81%	82%	81%	81%	78%	74%	79%	43%	70%	69%	69%	70%	61%	74%	76%				

A neat package of calving ease and with moderate growth. Better than breed average for 14 traits, Top 3% for docility. Used as a worker in 2023 joining. Suitable for heifers.

Purchaser..... Price.....

Top 5% **Top 10%** **Top 30%**
Ranking in Angus Aust. Mid June 2024

Proven Genetic Performance

www.hazeldean.com.au



HAZELDEAN
LITCHFIELD
EST 1865

NEW ENGLAND 2024

SALE BULLS

34 HAZELDEAN T173 (AI) SV APR AMFU NHFU CAFU DDFU Born: **17/07/2022**
Society Id: **NHZ22T173**

A A R TEN X 7008 S A
V A R DISCOVERY 2240
DEER VALLEY RITA 0308
Sire: **LANDFALL NEW GROUND TFAN90**
MATAURI REALITY 839
LANDFALL ELSA L88
LANDFALL ELSA J139

H P C A INTENSITY
RENNYLEA NORL519
RENNYLEA H414
Dam: **HAZELDEAN R790**
ARDROSSAN JUSTICE NAQJ93
HAZELDEAN P237
HAZELDEAN M634

Front	Rear	Front	Rear	Front	Rear	MUSCLE	TEMP.	SHEATH
6	6	5	6	5	5	C+	1	4

Structural EBV's			
TACE	ANGLE	CLAW	LEGS
	+0.66	+0.58	0.9
ACC%	71%	71%	69%

TRANSTASMAN ANGUS CATTLE EVALUATION - JUNE 2024																						
TACE	CALVING EASE				GROWTH & MATERNAL					FERTILITY		CWT	CARCASE					Doc	Angus Index	Dom	Heavy Grain	Heavy Grass
	DIR	DTRS	GL	B Wt	200	400	600	MWt	Milk	SS	DC	C Wt	EMA	RIB	RUMP	RBY%	IMF%	Doc.				
EBV	-9.1	+0.3	-6.4	+6.2	+61	+103	+132	+114	+11	+4.5	-5.6	+70	+9.6	-0.1	-0.3	+0.6	+1.6	+43	+204	+172	+266	+190
ACC%	70%	62%	83%	82%	83%	81%	82%	79%	76%	80%	48%	71%	71%	70%	71%	64%	74%	78%				

Great feet, power for your cows here, top 20% for 400d growth. Top 3% for days to calving and scrotal size. Top 16% for EMA. Used as a worker in 2023 joining.

Purchaser..... Price.....

35 HAZELDEAN T934 (AI) SV HBR AMFU NHFU CAFU DDFU Born: **05/08/2022**
Society Id: **NHZ22T934**

A A R TEN X 7008 S A
V A R DISCOVERY 2240
DEER VALLEY RITA 0308
Sire: **LANDFALL NEW GROUND TFAN90**
MATAURI REALITY 839
LANDFALL ELSA L88
LANDFALL ELSA J139

ARDROSSAN EQUATOR A241
HAZELDEAN JAIPUR J140
HAZELDEAN C33
Dam: **HAZELDEAN P6**
RENNYLEA EDMUND E11
HAZELDEAN K69
HAZELDEAN H293

Front	Rear	Front	Rear	Front	Rear	MUSCLE	TEMP.	SHEATH
6	6	6	6	5	5	C	2	3

Structural EBV's			
TACE	ANGLE	CLAW	LEGS
	+0.86	+0.72	0.92
ACC%	71%	71%	70%

TRANSTASMAN ANGUS CATTLE EVALUATION - JUNE 2024																						
TACE	CALVING EASE				GROWTH & MATERNAL					FERTILITY		CWT	CARCASE					Doc	Angus Index	Dom	Heavy Grain	Heavy Grass
	DIR	DTRS	GL	B Wt	200	400	600	MWt	Milk	SS	DC	C Wt	EMA	RIB	RUMP	RBY%	IMF%	Doc.				
EBV	+3	+5.8	-5.9	+5.1	+56	+101	+130	+120	+10	+6.1	-5.6	+71	+9	+0.7	-0.2	+1.2	+1.1	+18	+225	+197	+278	+215
ACC%	70%	61%	83%	82%	84%	82%	82%	80%	76%	80%	49%	73%	72%	72%	73%	65%	76%	79%				

More moderate frame size, tidy bull with lots of boxes ticked. Better than breed average for 16 traits. Calving ease, fertility and growth are real strengths. Used as a worker in 2023 joining.

Purchaser..... Price.....

36 HAZELDEAN T1177 (AI) SV APR AMFU NHFU CAFU DDFU Born: **13/08/2022**
Society Id: **NHZ22T1177**

HAZELDEAN JAIPUR J140
HAZELDEAN MAGNUM M586
HAZELDEAN H356
Sire: **HAZELDEAN Q843**
SYDGEN BLACK PEARL 2006
HAZELDEAN M656
HAZELDEAN F481

TE MANIA BERKLEY B1
HAZELDEAN F1023
HAZELDEAN B723
Dam: **HAZELDEAN P515**
HAZELDEAN KINGSCROSS K724
HAZELDEAN M1162
HAZELDEAN J44

Front	Rear	Front	Rear	Front	Rear	MUSCLE	TEMP.	SHEATH
6	6	5	6	4	5	C+	1	5

Structural EBV's			
TACE	ANGLE	CLAW	LEGS
	+0.96	+0.62	1
ACC%	63%	63%	60%

TRANSTASMAN ANGUS CATTLE EVALUATION - JUNE 2024																						
TACE	CALVING EASE				GROWTH & MATERNAL					FERTILITY		CWT	CARCASE					Doc	Angus Index	Dom	Heavy Grain	Heavy Grass
	DIR	DTRS	GL	B Wt	200	400	600	MWt	Milk	SS	DC	C Wt	EMA	RIB	RUMP	RBY%	IMF%	Doc.				
EBV	+3.2	+2.8	-2.5	+4.4	+53	+98	+128	+114	+18	+1.7	-3	+79	+8.7	-0.4	+0.3	+0.8	+2.1	+38	+208	+169	+278	+190
ACC%	64%	53%	83%	82%	83%	80%	81%	77%	73%	79%	43%	71%	70%	69%	71%	61%	75%	76%				

Stretchy and great structure, a balance of traits with top 4% docility. Nice overall type. Used as a worker in 2023 joining.

Purchaser..... Price.....

Top 5% **Top 10%** **Top 30%**

Ranking in Angus Aust. Mid June 2024

Proven Genetic Performance

www.hazeldean.com.au

NEW ENGLAND 2024



SALE BULLS

37 HAZELDEAN T103 (ET) PV APR AMFU NHFU CAFU DDFU Born: 30/07/2022 Society Id: NHZ22T103

C R A BEXTOR 872 5205 608
 G A R PROPHET
 G A R OBJECTIVE 1885
Sire: BALDRIDGE BEAST MODE B074
 STYLES UPGRADE J59
 BALDRIDGE ISABEL Y69
 BALDRIDGE ISABEL T935

TE MANIA YORKSHIRE Y437
 TE MANIA BERKLEY B1
 TE MANIA LOWAN Z53
Dam: HAZELDEAN K801
 LEACHMAN BOOM TIME
 HAZELDEAN F307
 HAZELDEAN YELLOWSTONE A618

Front	Rear	Front	Rear	Front	Rear	MUSCLE	TEMP.	SHEATH
7	6	6	6	6	5	C+	1	4

Structural EBV's			
TACE	ANGLE	CLAW	LEGS
	+1	+1.02	0.92
ACC%	75%	75%	72%

TRANSTASMAN ANGUS CATTLE EVALUATION - JUNE 2024																						
TACE	CALVING EASE				GROWTH & MATERNAL				FERTILITY		CWT	CARCASE					Doc	Angus Index	Dom	Heavy Grain	Heavy Grass	
	DIR	DTRS	GL	B Wt	200	400	600	MWt	Milk	SS	DC	C Wt	EMA	RIB	RUMP	RBV%	IMF%	Doc.				
EBV	+4.8	+5.7	-1	+4	+66	+105	+135	+131	+10	+2.5	-4.7	+81	+4.5	-0.8	-2.2	+0.6	+2.3	+29	+234	+197	+309	+214
ACC%	71%	64%	82%	82%	83%	82%	82%	80%	77%	80%	54%	73%	73%	72%	73%	67%	76%	79%				

Lots of volume, just like his daddy - Beast Mode. There is a full flush brother in the sale. A bit more growth in this brother, top 4% for 200d, top 15% for 400d. Better than breed average for IMF and days to calving. Nice calving ease - a real curve bender. Suitable for heifers.

Purchaser..... Price.....

38 HAZELDEAN T1042 (AI) SV APR AMFU NHFU CAFU DDFU Born: 07/08/2022 Society Id: NHZ22T1042

TE MANIA BERKLEY B1
 HAZELDEAN F1023
 HAZELDEAN B723
Sire: HAZELDEAN RANGER R1593
 G A R PROPHET
 HAZELDEAN J823
 HAZELDEAN G724

RENNYLEA EDMUND E11
 HAZELDEAN KATZEN K416
 HAZELDEAN H342
Dam: HAZELDEAN N204
 HAZELDEAN UU

Front	Rear	Front	Rear	Front	Rear	MUSCLE	TEMP.	SHEATH
6	6	6	7	5	5	C+	1	4

Structural EBV's			
TACE	ANGLE	CLAW	LEGS
	+1.16	+0.76	0.96
ACC%	64%	65%	63%

TRANSTASMAN ANGUS CATTLE EVALUATION - JUNE 2024																						
TACE	CALVING EASE				GROWTH & MATERNAL				FERTILITY		CWT	CARCASE					Doc	Angus Index	Dom	Heavy Grain	Heavy Grass	
	DIR	DTRS	GL	B Wt	200	400	600	MWt	Milk	SS	DC	C Wt	EMA	RIB	RUMP	RBV%	IMF%	Doc.				
EBV	+4.4	+4.8	-7.7	+2	+52	+86	+118	+87	+18	+2.7	-5.8	+72	+1.3	+3.2	+0.7	-0.7	+4.8	+16	+226	+173	+306	+212
ACC%	65%	54%	83%	81%	82%	80%	81%	78%	73%	78%	43%	70%	69%	69%	70%	60%	74%	76%				

Good length attractive outlook for a bull with plenty going for him in lots of areas. Better than breed average for 14 traits. Top 6% for IMF and very good calving ease. Suitable for heifers.

Purchaser..... Price.....

39 HAZELDEAN T486 (AI) PV APR AMFU NHFU CAFU DDFU Born: 31/07/2022 Society Id: NHZ22T486

G A R INGENUITY
 H P C A INTENSITY
 G A R PREDESTINED 287L
Sire: RENNYLEA NATIONWIDE N432
 TE MANIA BERKLEY B1
 RENNYLEA H367
 RENNYLEA F228

HAZELDEAN JAIPUR J140
 HAZELDEAN MAGNUM M586
 HAZELDEAN H356
Dam: HAZELDEAN P1242
 RENNYLEA EDMUND E11
 HAZELDEAN K412
 HAZELDEAN H854

Front	Rear	Front	Rear	Front	Rear	MUSCLE	TEMP.	SHEATH
6	6	6	6	5	5	C	1	4

Structural EBV's			
TACE	ANGLE	CLAW	LEGS
	+0.78	+0.54	1.14
ACC%	66%	65%	65%

TRANSTASMAN ANGUS CATTLE EVALUATION - JUNE 2024																						
TACE	CALVING EASE				GROWTH & MATERNAL				FERTILITY		CWT	CARCASE					Doc	Angus Index	Dom	Heavy Grain	Heavy Grass	
	DIR	DTRS	GL	B Wt	200	400	600	MWt	Milk	SS	DC	C Wt	EMA	RIB	RUMP	RBV%	IMF%	Doc.				
EBV	+3.6	+5.4	-8.5	+5.7	+65	+110	+149	+147	+18	+0.7	-4.1	+88	+7	-2.5	-2.8	+0.3	+3.2	+22	+228	+180	+308	+210
ACC%	66%	57%	83%	83%	84%	82%	82%	79%	76%	80%	47%	72%	72%	71%	72%	63%	76%	78%				

VERY GOOD QUALITY. Powerful type with real capacity. Top 5% for 600d growth. Top 6% for gestation length and also carcass weight and claw set EBV. One not to miss.

Purchaser..... Price.....

Top 5% **Top 10%** **Top 30%**
 Ranking in Angus Aust. Mid June 2024

Proven Genetic Performance

www.hazeldean.com.au

NEW ENGLAND 2024



SALE BULLS

40 HAZELDEAN T2480 (Nat) PV APR AMFU NHFU CAFU DDFU Born: **16/09/2022**
 Society Id: **NH222T2480**

HAZELDEAN JAIPUR J140
 HAZELDEAN MAGNUM M586
 HAZELDEAN H356
Sire: HAZELDEAN R1523
 TE MANIA AFRICA A217
 HAZELDEAN G84
 HAZELDEAN E44

KAROO W109 DIRECTION Z181
 CARABAR DOCKLANDS D62
 CARABAR BLACKCAP MARY B12
Dam: HAZELDEAN K338
 TC TOTAL 410
 HAZELDEAN H4
 HAZELDEAN A90

Front	Rear	Front	Rear	Front	Rear	MUSCLE	TEMP.	SHEATH
6	6	6	7	5	5	C+	1	4

Structural EBV's			
TACE	ANGLE	CLAW	LEGS
	+1.14	+0.76	1.12
ACC%	65%	65%	63%

TRANSTASMAN ANGUS CATTLE EVALUATION - JUNE 2024																						
TACE	CALVING EASE				GROWTH & MATERNAL				FERTILITY		CWT	CARCASE					Doc	Angus Index	Dom	Heavy Grain	Heavy Grass	
	DIR	DTRS	GL	B Wt	200	400	600	MWt	Milk	SS	DC	C Wt	EMA	RIB	RUMP	RBV%	IMF%	Doc.				
EBV	+7.1	+4.7	-4.1	+2	+46	+90	+119	+102	+25	+2.1	-6.8	+63	+4.5	+0.3	+1.7	-0.2	+3.5	+20	+222	+180	+291	+209
ACC%	64%	55%	82%	81%	83%	81%	81%	78%	75%	79%	44%	70%	69%	69%	70%	60%	74%	76%				

Commercial relevance and stay ability. Big barrel on him better than breed average for 600d and temp. Top 7 % for milk and 21% for IMF. Suitable for heifers.

Purchaser..... Price.....

41 HAZELDEAN T744 (AI) PV APR AMFU NHFU CAFU DDFU Born: **02/08/2022**
 Society Id: **NH222T744**

H P C A INTENSITY
 RENNYLEA NORL519
 RENNYLEA H414
Sire: HAZELDEAN RAMROD R1581
 G A R PROPHET
 HAZELDEAN J115
 HAZELDEAN A243

ARDROSSAN HONOUR H255
 ARDROSSAN MAGISTRATE M101
 ARDROSSAN PRINCESS H230
Dam: HAZELDEAN Q1407
 HAZELDEAN KHMER K150
 HAZELDEAN M1178
 HAZELDEAN H513

Front	Rear	Front	Rear	Front	Rear	MUSCLE	TEMP.	SHEATH
5	6	5	6	5	5	C+	1	4

Structural EBV's			
TACE	ANGLE	CLAW	LEGS
	+0.72	+0.44	0.92
ACC%	65%	65%	63%

TRANSTASMAN ANGUS CATTLE EVALUATION - JUNE 2024																						
TACE	CALVING EASE				GROWTH & MATERNAL				FERTILITY		CWT	CARCASE					Doc	Angus Index	Dom	Heavy Grain	Heavy Grass	
	DIR	DTRS	GL	B Wt	200	400	600	MWt	Milk	SS	DC	C Wt	EMA	RIB	RUMP	RBV%	IMF%	Doc.				
EBV	+7	+4.2	-11.3	+4.8	+61	+110	+149	+153	+15	+2.7	-5	+77	+6.6	-2.6	-4.2	+1.5	+1.1	+24	+218	+186	+271	+205
ACC%	65%	55%	82%	81%	82%	80%	81%	77%	73%	78%	43%	69%	69%	68%	70%	60%	73%	76%				

Scope and volume, this young son of R1561 is in the top 11% for calving ease direct with top 6% 600d growth and retail beef yield. 14 traits better than breed average. Suitable for heifers.

Purchaser..... Price.....

42 HAZELDEAN T908 (AI) SV APR AMFU NHFU CAFU DDFU Born: **05/08/2022**
 Society Id: **NH222T908**

TE MANIA BERKLEY B1
 HAZELDEAN F1023
 HAZELDEAN B723
Sire: HAZELDEAN P709
 HAZELDEAN GUARANTOR G52
 HAZELDEAN M1192
 HAZELDEAN H321

LAWSONS TANK X1235(AI) VLYX1235
 LAWSONS TANK VLY B1155
 LAWSONS NEW DESIGN 1407 Z1393
Dam: HAZELDEAN H544
 HAZELDEAN DESTINATION B951
 HAZELDEAN D952
 HAZELDEAN X368

Front	Rear	Front	Rear	Front	Rear	MUSCLE	TEMP.	SHEATH
7	6	7	7	5	5	C+	1	4

Structural EBV's			
TACE	ANGLE	CLAW	LEGS
	+0.98	+0.6	0.92
ACC%	65%	65%	63%

TRANSTASMAN ANGUS CATTLE EVALUATION - JUNE 2024																						
TACE	CALVING EASE				GROWTH & MATERNAL				FERTILITY		CWT	CARCASE					Doc	Angus Index	Dom	Heavy Grain	Heavy Grass	
	DIR	DTRS	GL	B Wt	200	400	600	MWt	Milk	SS	DC	C Wt	EMA	RIB	RUMP	RBV%	IMF%	Doc.				
EBV	-3.4	-1.5	-3.2	+5.3	+51	+83	+110	+94	+14	+3	-2.6	+63	+4.9	-0.3	-1.2	-0.5	+4.1	+22	+157	+115	+228	+139
ACC%	64%	53%	82%	81%	82%	80%	81%	77%	74%	78%	43%	70%	69%	69%	70%	60%	73%	76%				

Strong topline built like a Kenworth 908. Good balance across the page of EBV's.

Purchaser..... Price.....

Top 5% **Top 10%** **Top 30%**
 Ranking in Angus Aust. Mid June 2024

Proven Genetic Performance

www.hazeldean.com.au

NEW ENGLAND 2024



SALE BULLS

43 HAZELDEAN T63 (ET) PV APR AMFU NHFU CAFU DDFU Born: 23/07/2022 Society Id: NHZ22T63

C R A BEXTOR 872 5205 608
G A R PROPHET
G A R OBJECTIVE 1885
Sire: BALDRIDGE BEAST MODE B074
STYLES UPGRADE J59
BALDRIDGE ISABEL Y69
BALDRIDGE ISABEL T935

TE MANIA YORKSHIRE Y437
TE MANIA BERKLEY B1
TE MANIA LOWAN Z53
Dam: HAZELDEAN K801
LEACHMAN BOOM TIME
HAZELDEAN F307
HAZELDEAN YELLOWSTONE A618

Front	Rear	Front	Rear	Front	Rear	MUSCLE	TEMP.	SHEATH
6	6	6	6	5	5	C+	1	4

Structural EBV's			
TACE	ANGLE	CLAW	LEGS
	+0.82	+0.58	0.9
ACC%	75%	75%	73%

TRANSTASMAN ANGUS CATTLE EVALUATION - JUNE 2024																							
TACE	CALVING EASE				GROWTH & MATERNAL				FERTILITY		CWT	CARCASE					Doc	Angus Index	Dom	Heavy Grain	Heavy Grass		
	DIR	DTRS	GL	B Wt	200	400	600	MWt	Milk	SS	DC	C Wt	EMA	RIB	RUMP	RBV%	IMF%	Doc.					
EBV	+5.2	+2.2	-4.8	+5	+61	+95	+126	+117	+13	+1.3	-6.6	+65	+0.4	+0.3	-1	-0.7	+4.1	+13	+227	+182	+305	+208	
ACC%	71%	64%	82%	82%	84%	82%	82%	80%	77%	80%	54%	73%	73%	72%	73%	66%	76%	79%					

Punch and muscle from the Beast Mode son - full flush brother to T103 in the sale. K801 is a high performance mature cow with plenty of runs on the board. Beast Mode needs no introduction. Moderate birth, top 12% for days to calving and IMF. Top 4% for claw set. One not to miss.

Purchaser..... Price.....

44 HAZELDEAN T2354 (Nat) PV APR AMFU NHFU CAFU DDFU Born: 08/09/2022 Society Id: NHZ22T2354

MATAURI REALITY 839
GLENOCHE-JK MAKAHU QLLM602
GLENOCHE-JK ANN K615
Sire: HAZELDEAN R164
RENNYLEA EDMUND E11
HAZELDEAN K404
HAZELDEAN H469

S A V THUNDERBIRD 9061
HAZELDEAN K995
HAZELDEAN CONNECTION D1103
Dam: HAZELDEAN M1069
HAZELDEAN BENEDICT B569
HAZELDEAN G850
HAZELDEAN D610

Front	Rear	Front	Rear	Front	Rear	MUSCLE	TEMP.	SHEATH
7	6	7	6	5	6	C+	2	4

Structural EBV's			
TACE	ANGLE	CLAW	LEGS
	+0.9	+0.8	1.02
ACC%	64%	64%	61%

TRANSTASMAN ANGUS CATTLE EVALUATION - JUNE 2024																							
TACE	CALVING EASE				GROWTH & MATERNAL				FERTILITY		CWT	CARCASE					Doc	Angus Index	Dom	Heavy Grain	Heavy Grass		
	DIR	DTRS	GL	B Wt	200	400	600	MWt	Milk	SS	DC	C Wt	EMA	RIB	RUMP	RBV%	IMF%	Doc.					
EBV	-1	+3.2	-4.8	+5.1	+55	+100	+129	+132	+13	+3.6	-3.3	+68	+5.5	-0.8	-3.2	+0.6	+1.4	+17	+161	+138	+211	+146	
ACC%	62%	52%	81%	80%	81%	79%	80%	76%	72%	77%	39%	67%	67%	67%	68%	58%	72%	74%					

Robust and thick moderate frame. Great growth with 400d in the top 25%. Overall balanced bull.

Purchaser..... Price.....

45 HAZELDEAN T671 (AI) PV APR AMFU NHFU CAFU DDFU Born: 01/08/2022 Society Id: NHZ22T671

G A R INGENUITY
H P C A INTENSITY
G A R PREDESTINED 287L
Sire: RENNYLEA NATIONWIDE N432
TE MANIA BERKLEY B1
RENNYLEA H367
RENNYLEA F228

MATAURI REALITY 839
KAROO KNOCKOUT K176
KAROO JEDDA H213
Dam: HAZELDEAN Q813
HAZELDEAN KATZEN K416
HAZELDEAN N968
HAZELDEAN H643

Front	Rear	Front	Rear	Front	Rear	MUSCLE	TEMP.	SHEATH
7	6	6	6	5	5	C+	2	4

Structural EBV's			
TACE	ANGLE	CLAW	LEGS
	+0.7	+0.84	0.96
ACC%	66%	66%	66%

TRANSTASMAN ANGUS CATTLE EVALUATION - JUNE 2024																							
TACE	CALVING EASE				GROWTH & MATERNAL				FERTILITY		CWT	CARCASE					Doc	Angus Index	Dom	Heavy Grain	Heavy Grass		
	DIR	DTRS	GL	B Wt	200	400	600	MWt	Milk	SS	DC	C Wt	EMA	RIB	RUMP	RBV%	IMF%	Doc.					
EBV	-6.5	-7.4	-5.4	+7.1	+72	+121	+155	+171	+12	+1.6	-3.4	+87	+9.4	-2.3	-2.7	+1.8	-0.6	+21	+189	+166	+248	+167	
ACC%	65%	56%	83%	81%	82%	81%	81%	77%	74%	79%	44%	70%	69%	69%	70%	61%	74%	76%					

Plenty of volume and capacity. Punchy growth along with top 8% carcass weight. Top 3% for retail beef yield.

Purchaser..... Price.....

Top 5% **Top 10%** **Top 30%**
Ranking in Angus Aust. Mid June 2024

Proven Genetic Performance

www.hazeldean.com.au



HAZELDEAN
LITCHFIELD
EST 1865

NEW ENGLAND 2024

SALE BULLS

46 HAZELDEAN T2200 (Nat) SV APR Born: 29/08/2022
AMFU NHFU CAFU DDFU Society Id: NHZ22T2200

H P C A INTENSITY
RENNYLEA NORL519
RENNYLEA H414
Sire: HAZELDEAN RONALDO R1561
G A R PROPHET
HAZELDEAN J115
HAZELDEAN A243

S A V RESOURCE 1441
LT DRIFTER 4073 USA18019663
LT ERICA 0121
Dam: HAZELDEAN M967
LEACHMAN BOOM TIME
HAZELDEAN E609
HAZELDEAN LEAD ON Z1160

Front	Rear	Front	Rear	MUSCLE	TEMP.	SHEATH		
6	6	5	6	5	5	C+	1	4

Structural EBV's			
TACE	ANGLE	CLAW	LEGS
	+0.68	+0.66	0.92
ACC%	67%	67%	63%

TRANSTASMAN ANGUS CATTLE EVALUATION - JUNE 2024																							
TACE	CALVING EASE				GROWTH & MATERNAL				FERTILITY		CWT	CARCASE					Doc	Angus Index	Dom	Heavy Grain	Heavy Grass		
	DIR	DTRS	GL	B Wt	200	400	600	MWt	Milk	SS	DC	C Wt	EMA	RIB	RUMP	RBY%	IMF%	Doc.					
EBV	-8.7	+2.3	-1.9	+7.1	+63	+98	+126	+128	+5	+0.7	-4	+73	+6.5	-1.9	-1.5	+1	+1.9	+16	+192	+158	+258	+169	
ACC%	65%	55%	82%	82%	83%	80%	81%	77%	73%	79%	43%	69%	68%	68%	69%	60%	73%	77%					

Solid built good muscle pattern to match. Plenty of early growth, top 7% for 200 d weight. Better than breed average for EMA and claw set.

Purchaser..... Price.....

47 HAZELDEAN T1930 (Nat) PV APR Born: 21/08/2022
AMFU NHFU CAFU DDFU Society Id: NHZ22T1930

MATAURI REALITY 839
GLENOC-HK MAKAHU QLLM602
GLENOC-HK ANN K615
Sire: HAZELDEAN R361
MILLWILLAH COMPLEMENT NJWK108
HAZELDEAN N124
HAZELDEAN L1284

RENNYLEA EDMUND E11
HAZELDEAN N549
HAZELDEAN H1616
Dam: HAZELDEAN Q1758
DUNOON GOTHIC BHRG531
HAZELDEAN L999
HAZELDEAN H1031

Front	Rear	Front	Rear	MUSCLE	TEMP.	SHEATH		
6	6	6	6	5	5	C+	1	4

Structural EBV's			
TACE	ANGLE	CLAW	LEGS
	+0.76	+0.76	0.9
ACC%	64%	64%	61%

TRANSTASMAN ANGUS CATTLE EVALUATION - JUNE 2024																							
TACE	CALVING EASE				GROWTH & MATERNAL				FERTILITY		CWT	CARCASE					Doc	Angus Index	Dom	Heavy Grain	Heavy Grass		
	DIR	DTRS	GL	B Wt	200	400	600	MWt	Milk	SS	DC	C Wt	EMA	RIB	RUMP	RBY%	IMF%	Doc.					
EBV	+1.3	+3.8	-5.8	+4.5	+55	+97	+132	+152	+22	+1.6	-6.3	+82	+4.9	-1.9	-2.2	+1.1	-0.2	+28	+173	+150	+215	+159	
ACC%	62%	51%	81%	80%	81%	79%	80%	76%	71%	77%	38%	67%	66%	66%	67%	57%	72%	74%					

Thick set commercially relevant for cow calf producers. Curve bender genetics with 600d growth in the top 22% of the breed. Very good carcass weight. Top 17 for milk EBVs. Lovely docile nature. Suitable for heifers.

Purchaser..... Price.....

48 HAZELDEAN T867 (AI) PV APR Born: 04/08/2022
AMFU NHFU CAFU DDFU Society Id: NHZ22T867

G A R MOMENTUM USA17354145
LAWSONS MOMENTOUS M518
LAWSONS AFRICA H229 VLYH229
Sire: MURDEDUKE QUARTERBACK Q011
CARABAR DOCKLANDS D62
MURDEDUKE BARUNDAH N026
MURDEDUKE BARUNAH C191

RENNYLEA EDMUND E11
HAZELDEAN LAMARCK L609
HAZELDEAN BRAVE E470
Dam: HAZELDEAN Q642
ARDROSSAN EQUATOR A241
HAZELDEAN H684
HAZELDEAN F483

Front	Rear	Front	Rear	MUSCLE	TEMP.	SHEATH		
6	6	7	7	5	6	C	1	4

Structural EBV's			
TACE	ANGLE	CLAW	LEGS
	+1.26	+0.74	1.2
ACC%	66%	66%	66%

TRANSTASMAN ANGUS CATTLE EVALUATION - JUNE 2024																							
TACE	CALVING EASE				GROWTH & MATERNAL				FERTILITY		CWT	CARCASE					Doc	Angus Index	Dom	Heavy Grain	Heavy Grass		
	DIR	DTRS	GL	B Wt	200	400	600	MWt	Milk	SS	DC	C Wt	EMA	RIB	RUMP	RBY%	IMF%	Doc.					
EBV	+4.3	-0.9	-3.6	+2.7	+42	+81	+106	+78	+22	+4.6	-6.3	+54	+4.4	+2.7	+1.6	+0.1	+3.8	+10	+209	+170	+271	+198	
ACC%	69%	60%	83%	82%	84%	82%	82%	80%	75%	80%	46%	72%	72%	71%	73%	63%	76%	78%					

Well balanced square top, moderate frame with depth. Very good fats along with top 3% scrotal size. Suitable for heifers.

Purchaser..... Price.....

Top 5% **Top 10%** **Top 30%**
Ranking in Angus Aust. Mid June 2024

Proven Genetic Performance

www.hazeldean.com.au



HAZELDEAN
LITCHFIELD
EST 1865

NEW ENGLAND 2024

SALE BULLS

49 HAZELDEAN T2394 (Nat) SV APR AMFU NHFU CAFU DDFU Born: 11/09/2022
Society Id: NHZ22T2394

RENNYLEA C511
RENNYLEA NORH708
RENNYLEA E176
Sire: HAZELDEAN R302
MATAURI REALITY 839
HAZELDEAN N273
HAZELDEAN L390

TE MANIA YORKSHIRE Y437
TE MANIA BERKLEY B1
TE MANIA LOWAN Z53
Dam: HAZELDEAN K683
SITZ NEW DESIGN 458N
HAZELDEAN E583
HAZELDEAN Z766

Front	Rear	Front	Rear	Front	Rear	MUSCLE	TEMP.	SHEATH
6	6	6	6	5	5	C+	2	4

Structural EBV's			
TACE	ANGLE	CLAW	LEGS
	+0.88	+0.76	0.98
ACC%	63%	63%	61%

TRANSTASMAN ANGUS CATTLE EVALUATION - JUNE 2024																							
TACE	CALVING EASE				GROWTH & MATERNAL				FERTILITY		CWT	CARCASE					Doc	Angus Index	Dom	Heavy Grain	Heavy Grass		
	DIR	DTRS	GL	B Wt	200	400	600	MWt	Milk	SS	DC	C Wt	EMA	RIB	RUMP	RBY%	IMF%	Doc.					
EBV	+8.1	+1.9	-6.1	+2.3	+43	+82	+106	+113	+15	+1.2	-3.4	+59	+6.4	-1.2	-3.3	+1.1	+5.1	+24	+191	+152	+260	+173	
ACC%	66%	57%	82%	81%	83%	81%	81%	78%	74%	79%	47%	71%	70%	70%	71%	62%	75%	76%					

Very high quality, easy fleshing bull with softness. Top 4% for IMF, very good calving ease. Suitable for heifers.

Purchaser..... Price.....

50 HAZELDEAN T2118 (Nat) SV APR AMFU NHFU CAFU DDFU Born: 26/08/2022
Society Id: NHZ22T2118

HAZELDEAN LAMBREQUIN L21
HAZELDEAN P159
HAZELDEAN J204
Sire: HAZELDEAN R1381
TE MANIA BERKLEY B1
HAZELDEAN K672
HAZELDEAN CASHFLOW C833

GARDENS PRIME STAR
KC HAAS GPS
KCH ELINE 549
Dam: HAZELDEAN J1575
WKREPLAY USA16154968
HAZELDEAN F1105
HAZELDEAN X874

Front	Rear	Front	Rear	Front	Rear	MUSCLE	TEMP.	SHEATH
6	6	6	7	5	5	C+	2	4

Structural EBV's			
TACE	ANGLE	CLAW	LEGS
	+1.24	+1.24	1.2
ACC%	65%	65%	60%

TRANSTASMAN ANGUS CATTLE EVALUATION - JUNE 2024																							
TACE	CALVING EASE				GROWTH & MATERNAL				FERTILITY		CWT	CARCASE					Doc	Angus Index	Dom	Heavy Grain	Heavy Grass		
	DIR	DTRS	GL	B Wt	200	400	600	MWt	Milk	SS	DC	C Wt	EMA	RIB	RUMP	RBY%	IMF%	Doc.					
EBV	+1.9	+5	-2.9	+4.8	+55	+95	+124	+129	+13	+1.9	-4.6	+84	+7.8	+0.2	+0.2	+0.5	+2.5	+1	+206	+169	+273	+189	
ACC%	63%	53%	81%	81%	82%	80%	80%	77%	73%	78%	41%	68%	68%	67%	69%	59%	73%	75%					

Long barrel on this son of R1381. Better than breed average for 600d growth IMF, EMA. Suitable for heifers.

Purchaser..... Price.....

51 HAZELDEAN T2355 (Nat) SV APR AMFU NHFU CAFU DDFU Born: 08/09/2022
Society Id: NHZ22T2355

HAZELDEAN JAIPUR J140
HAZELDEAN P728
HAZELDEAN L652
Sire: HAZELDEAN R1278
WKREPLAY USA16154968
HAZELDEAN F444
HAZELDEAN W663

ARDROSSAN EQUATOR A241
HAZELDEAN JAIPUR J140
HAZELDEAN C33
Dam: HAZELDEAN N457
S A V THUNDERBIRD 9061
K540
HAZELDEAN H473

Front	Rear	Front	Rear	Front	Rear	MUSCLE	TEMP.	SHEATH
6	5	6	6	5	5	C+	1	4

Structural EBV's			
TACE	ANGLE	CLAW	LEGS
	+0.74	+0.72	0.8
ACC%	61%	61%	56%

TRANSTASMAN ANGUS CATTLE EVALUATION - JUNE 2024																							
TACE	CALVING EASE				GROWTH & MATERNAL				FERTILITY		CWT	CARCASE					Doc	Angus Index	Dom	Heavy Grain	Heavy Grass		
	DIR	DTRS	GL	B Wt	200	400	600	MWt	Milk	SS	DC	C Wt	EMA	RIB	RUMP	RBY%	IMF%	Doc.					
EBV	+5.2	+4.7	-5	+6	+67	+120	+155	+126	+23	+4.1	-6.7	+93	+7.2	-1.7	-1.1	+1.3	+0.2	+40	+271	+239	+336	+258	
ACC%	64%	53%	82%	81%	82%	80%	81%	77%	73%	79%	43%	70%	69%	69%	70%	60%	74%	76%					

Good solid bull with nice muscle pattern and shape - he boasts top 3% of the breed for 600d, docility carcase weight and Angus Breeding Index. Handy bull here.

Purchaser..... Price.....

Top 5% Top 10% Top 30%

Ranking in Angus Aust. Mid June 2024

Proven Genetic Performance

www.hazeldean.com.au



HAZELDEAN
LITCHFIELD
EST 1865

NEW ENGLAND 2024

SALE BULLS

52 HAZELDEAN T819 (AI) SV APR AMFU NHFU CAFU DDFU Born: 04/08/2022 Society Id: NHZ22T819

G A R PROPHET
BALDRIDGE BEAST MODE B074
BALDRIDGE ISABEL Y69
Sire: HAZELDEAN POWER UP R274
KM BROKEN BOW 002
HAZELDEAN K97
HAZELDEAN F103

LAWSONS TANK X1235(AI) VLYX1235
LAWSONS TANK VLY B1155
LAWSONS NEW DESIGN 1407 Z1393
Dam: HAZELDEAN J1506
HAZ COM BULL
HAZELDEAN D391
HAZELDEAN B150

Front	Rear	Front	Rear	Front	Rear	MUSCLE	TEMP.	SHEATH
6	5	6	6	5	5	C+	1	4

Structural EBV's			
TACE	ANGLE	CLAW	LEGS
	+0.62	+0.86	0.78
ACC%	68%	67%	66%

TRANSTASMAN ANGUS CATTLE EVALUATION - JUNE 2024																							
TACE	CALVING EASE				GROWTH & MATERNAL				FERTILITY		CWT	CARCASE					Doc	Angus Index	Dom	Heavy Grain	Heavy Grass		
	DIR	DTRS	GL	B Wt	200	400	600	MWt	Milk	SS	DC	C Wt	EMA	RIB	RUMP	RBV%	IMF%	Doc.					
EBV	-1.5	+6	-5.5	+4.8	+59	+99	+127	+135	+7	+3.7	-7.5	+70	+5.9	-1.5	-2.6	+1.4	+1.4	+6	+221	+198	+271	+208	
ACC%	65%	56%	81%	81%	82%	80%	81%	77%	73%	78%	44%	69%	68%	68%	69%	60%	73%	76%					

Good length and a tidy type. Impressive fertility traits and a son of the sale topping Hazeldean Power Up - R274.

Purchaser..... Price.....

53 HAZELDEAN T2490 (Nat) SV APR AMFU NHFU CAFU DDFU Born: 17/09/2022 Society Id: NHZ22T2490

RENNYLEA C511
RENNYLEA NORH708
RENNYLEA E176
Sire: HAZELDEAN R401
TE MANIA BERKLEY B1
HAZELDEAN F553
HAZELDEAN A792

KAROO W109 DIRECTION Z181
CARABAR DOCKLANDS D62
CARABAR BLACKCAP MARY B12
Dam: HAZELDEAN J186
BR MIDLAND
HAZELDEAN MIDLAND D3
HAZELDEAN W61

Front	Rear	Front	Rear	Front	Rear	MUSCLE	TEMP.	SHEATH
6	6	6	6	5	5	C+	2	4

Structural EBV's			
TACE	ANGLE	CLAW	LEGS
	+0.82	+0.6	0.74
ACC%	66%	66%	64%

TRANSTASMAN ANGUS CATTLE EVALUATION - JUNE 2024																							
TACE	CALVING EASE				GROWTH & MATERNAL				FERTILITY		CWT	CARCASE					Doc	Angus Index	Dom	Heavy Grain	Heavy Grass		
	DIR	DTRS	GL	B Wt	200	400	600	MWt	Milk	SS	DC	C Wt	EMA	RIB	RUMP	RBV%	IMF%	Doc.					
EBV	0	+0.9	-3.9	+5.4	+49	+90	+117	+120	+16	+3.8	-4.8	+66	+6.8	+0.8	-0.3	+0.6	+3.1	+24	+188	+154	+247	+174	
ACC%	66%	57%	81%	81%	82%	80%	81%	78%	75%	79%	46%	71%	70%	70%	71%	62%	75%	76%					

Handy commercial worker bull. Top 6% for claw, this bloke will go the distance for you. Better than breed average for IMF and EMA.

Purchaser..... Price.....

54 HAZELDEAN T616 (AI) SV APR AMFU NHFU CAFU DDFU Born: 01/08/2022 Society Id: NHZ22T616

ARDROSSAN EQUATOR A241
HAZELDEAN JAIPUR J140
HAZELDEAN C33
Sire: HAZELDEAN MAGNUM M586
RENNYLEA C574
HAZELDEAN H356
HAZELDEAN F573

KCF BENNETT TOTAL USA13687063
HAZELDEAN CARDRONA C677
HAZELDEAN A889
Dam: HAZELDEAN G968
ARDROSSAN ADMIRAL A2
HAZELDEAN ADMIRAL D100
HAZELDEAN B17

Front	Rear	Front	Rear	Front	Rear	MUSCLE	TEMP.	SHEATH
6	6	6	6	5	5	C+	2	4

Structural EBV's			
TACE	ANGLE	CLAW	LEGS
	+0.96	+0.66	1.02
ACC%	69%	69%	66%

TRANSTASMAN ANGUS CATTLE EVALUATION - JUNE 2024																							
TACE	CALVING EASE				GROWTH & MATERNAL				FERTILITY		CWT	CARCASE					Doc	Angus Index	Dom	Heavy Grain	Heavy Grass		
	DIR	DTRS	GL	B Wt	200	400	600	MWt	Milk	SS	DC	C Wt	EMA	RIB	RUMP	RBV%	IMF%	Doc.					
EBV	-5.3	+7.4	-3.7	+3.8	+47	+81	+106	+81	+14	+2.2	-8.1	+64	+11.3	+0.3	+1.7	+0.7	+2.8	+32	+233	+193	+298	+221	
ACC%	66%	55%	83%	82%	83%	81%	82%	79%	76%	80%	49%	73%	72%	72%	73%	64%	76%	77%					

Dependable heifer bull. Top 8% for EMA and good indexes. Top 9% for calving ease daughters.

Purchaser..... Price.....

Top 5% Top 10% Top 30%

Ranking in Angus Aust. Mid June 2024

Proven Genetic Performance

www.hazeldean.com.au



HAZELDEAN
LITCHFIELD
EST 1865

NEW ENGLAND 2024

SALE BULLS

55 HAZELDEAN T1141 (AI) SV APR Born: 10/08/2022
 AMFU NHFU CAFU DDFU Society Id: NHZ22T1141

HAZELDEAN JAIPUR J140
 HAZELDEAN MAGNUM M586
 HAZELDEAN H356
Sire: HAZELDEAN Q319
 HAZELDEAN JALANA J1510
 HAZELDEAN L1175
 HAZELDEAN H1603

RENNYLEA EDMUND E11
 ARDROSSAN JUSTICE NAQJ93
 ARDROSSAN EVERELDA AI(ET) NAQF6
Dam: HAZELDEAN P394
 SITZ NEW DESIGN 458N
 HAZELDEAN E664
 HAZELDEAN C503

Front	Rear	Front	Rear	Front	Rear	MUSCLE	TEMP.	SHEATH
7	6	6	6	5	5	C	1	4

Structural EBV's			
TACE	ANGLE	CLAW	LEGS
	+1.12	+0.86	1.1
ACC%	63%	64%	61%

TRANSTASMAN ANGUS CATTLE EVALUATION - JUNE 2024																							
TACE	CALVING EASE				GROWTH & MATERNAL				FERTILITY		CWT	CARCASE					Doc	Angus Index	Dom	Heavy Grain	Heavy Grass		
	DIR	DTRS	GL	B Wt	200	400	600	MWt	Milk	SS	DC	C Wt	EMA	RIB	RUMP	RBV%	IMF%	Doc.					
EBV	+2.9	+7.6	-4.6	+2	+49	+91	+120	+119	+20	+3	-7.8	+70	-1.4	+2.7	+2.2	-1.5	+4.5	+26	+200	+161	+267	+187	
ACC%	65%	54%	84%	82%	83%	81%	82%	78%	73%	79%	44%	71%	70%	70%	71%	61%	74%	78%					

A big framed son from the super sire in Hazeldean Q319. This bull is kicking a lot of goals as more progeny are being measured. Cool birth to growth and top 8% for IMF. Very positive fats - suitable for heifers.

Purchaser..... Price.....

56 HAZELDEAN T960 (AI) PV APR Born: 05/08/2022
 AMFU NHFU CAFU DDFU Society Id: NHZ22T960

G A R INGENUITY
 H P C A INTENSITY
 G A R PREDESTINED 287L
Sire: RENNYLEA NATIONWIDE N432
 TE MANIA BERKLEY B1
 RENNYLEA H367
 RENNYLEA F228

SYDGEN BLACK PEARL 2006
 HAZELDEAN M665
 HAZELDEAN G863
Dam: HAZELDEAN P1243
 HAZELDEAN KHYBER K509
 HAZELDEAN K985

Front	Rear	Front	Rear	Front	Rear	MUSCLE	TEMP.	SHEATH
6	6	6	6	5	6	C+	2	4

Structural EBV's			
TACE	ANGLE	CLAW	LEGS
	+0.9	+0.78	1.04
ACC%	68%	67%	66%

TRANSTASMAN ANGUS CATTLE EVALUATION - JUNE 2024																							
TACE	CALVING EASE				GROWTH & MATERNAL				FERTILITY		CWT	CARCASE					Doc	Angus Index	Dom	Heavy Grain	Heavy Grass		
	DIR	DTRS	GL	B Wt	200	400	600	MWt	Milk	SS	DC	C Wt	EMA	RIB	RUMP	RBV%	IMF%	Doc.					
EBV	-0.4	+3.8	-5.3	+5.4	+67	+123	+167	+178	+21	+1.6	-1.7	+108	+4.5	-2.1	-3.1	+0.8	+0.7	+21	+177	+143	+237	+158	
ACC%	64%	55%	83%	81%	82%	80%	81%	77%	73%	78%	43%	69%	69%	69%	70%	60%	73%	75%					

A massive birth to growth spread, top 1% for 600d growth and carcass weight. Calves from this bloke will hit turn off weight in lightning speed!

Purchaser..... Price.....

57 HAZELDEAN T925 (AI) SV APR Born: 05/08/2022
 AMFU NHFU CAFU DDFU Society Id: NHZ22T925

G A R PROPHET
 TE MANIA KIRBY K138
 TE MANIA H17
Sire: TE MANIA QARARA Q514
 TE MANIA JOE J963
 TE MANIA BARUNAH L537
 TE MANIA BARUNAH H219

RENNYLEA EDMUND E11
 HAZELDEAN KATZEN K416
 HAZELDEAN H342
Dam: HAZELDEAN N352
 TUWHARETOA REGENT D145
 HAZELDEAN JONAH J33
 HAZELDEAN D1114

Front	Rear	Front	Rear	Front	Rear	MUSCLE	TEMP.	SHEATH
7	6	6	7	5	5	C	1	4

Structural EBV's			
TACE	ANGLE	CLAW	LEGS
	+1.02	+0.74	1
ACC%	69%	69%	68%

TRANSTASMAN ANGUS CATTLE EVALUATION - JUNE 2024																							
TACE	CALVING EASE				GROWTH & MATERNAL				FERTILITY		CWT	CARCASE					Doc	Angus Index	Dom	Heavy Grain	Heavy Grass		
	DIR	DTRS	GL	B Wt	200	400	600	MWt	Milk	SS	DC	C Wt	EMA	RIB	RUMP	RBV%	IMF%	Doc.					
EBV	+3.6	+7.4	-7.3	+2.9	+56	+96	+128	+97	+26	+3.7	-5.6	+78	+7	+0.4	+1.6	-0.5	+2.6	+43	+227	+180	+305	+213	
ACC%	66%	55%	83%	82%	83%	81%	81%	78%	73%	79%	44%	70%	70%	70%	71%	62%	75%	78%					

Solid type, good bone with thickness and great feet. Real curve bending EBVs and a mature cow lower than 600d. Top 9% for scrotal size. Scrotal size is very heritable and a great indicator of fertility in both males and females. Suitable for heifers.

Purchaser..... Price.....

Top 5% **Top 10%** **Top 30%**
 Ranking in Angus Aust. Mid June 2024

Proven Genetic Performance

www.hazeldean.com.au

NEW ENGLAND 2024



SALE BULLS

58 HAZELDEAN T724 (AI) SV APR AMFU NHFU CAFU DDFU Born: 02/08/2022 Society Id: NHZ22T724

ARDROSSAN EQUATOR A241
HAZELDEAN JAIPUR J140
HAZELDEAN C33
Sire: HAZELDEAN Q1237
CARABAR DOCKLANDS D62
HAZELDEAN J447
HAZELDEAN D684

ARDROSSAN EQUATOR A241
HAZELDEAN JAIPUR J140
HAZELDEAN C33
Dam: HAZELDEAN P436
BASIN PAYWEIGHT 1682 USA17038724
HAZELDEAN M62
HAZELDEAN J1220

Front	Rear	Front	Rear	Front	Rear	MUSCLE	TEMP.	SHEATH
6	5	6	6	5	5	C+	1	5

Structural EBV's			
TACE	ANGLE	CLAW	LEGS
	+0.9	+0.56	1.06
ACC%	61%	61%	56%

TRANSTASMAN ANGUS CATTLE EVALUATION - JUNE 2024																							
TACE	CALVING EASE				GROWTH & MATERNAL				FERTILITY		CWT	CARCASE					Doc	Angus Index	Dom	Heavy Grain	Heavy Grass		
	DIR	DTRS	GL	B Wt	200	400	600	MWt	Milk	SS	DC	C Wt	EMA	RIB	RUMP	RBV%	IMF%	Doc.					
EBV	+7	+5.1	-5.4	+3.6	+46	+76	+104	+80	+22	+1.5	-6.8	+73	+4.4	+0.1	-0.7	+0.3	+4.2	+36	+228	+180	+299	+213	
ACC%	67%	56%	85%	83%	84%	82%	83%	79%	75%	81%	48%	73%	73%	72%	73%	65%	77%	79%					

Upstanding young Q1237 son, top 11% for calving ease direct. Top 7% for docility. Top 3% for claw. Suitable for heifers.

Purchaser..... Price.....

59 HAZELDEAN T1037 (AI) PV APR AMFU NHFU CAFU DD3% Born: 07/08/2022 Society Id: NHZ22T1037

G A R PROPHET
BALDRIDGE BEAST MODE B074
BALDRIDGE ISABEL Y69
Sire: HAZELDEAN REPRIMAND R303
HAZELDEAN F1023
HAZELDEAN N334
HAZELDEAN L352

G A R PROPHET
BURENDA NATUROPATH N260
BURENDA WELCOME L359
Dam: BURENDA OPERA Q766
ARDROSSAN EQUATOR A241
BURENDA OPERA J403
TULAGI OPERA A86

Front	Rear	Front	Rear	Front	Rear	MUSCLE	TEMP.	SHEATH
6	5	5	6	5	5	C+	1	5

Structural EBV's			
TACE	ANGLE	CLAW	LEGS
	+0.84	+0.6	1.02
ACC%	54%	54%	51%

TRANSTASMAN ANGUS CATTLE EVALUATION - JUNE 2024																							
TACE	CALVING EASE				GROWTH & MATERNAL				FERTILITY		CWT	CARCASE					Doc	Angus Index	Dom	Heavy Grain	Heavy Grass		
	DIR	DTRS	GL	B Wt	200	400	600	MWt	Milk	SS	DC	C Wt	EMA	RIB	RUMP	RBV%	IMF%	Doc.					
EBV	+0.1	-3.3	-4.6	+6.7	+67	+111	+140	+149	+13	+4.6	-5.6	+77	-4.5	-1.4	-2.5	-0.6	+3.2	+14	+187	+162	+249	+168	
ACC%	68%	58%	84%	83%	84%	83%	83%	80%	76%	81%	45%	72%	71%	71%	72%	63%	76%	79%					

Punchy type of bull with ample growth. Top 8% for 400d growth. Top 3% for scrotal size. Power for your cows.

Purchaser..... Price.....

60 HAZELDEAN T1158 (AI) PV APR AMFU NHFU CAFU DDFU Born: 11/08/2022 Society Id: NHZ22T1158

ARDROSSAN EQUATOR A241
HAZELDEAN JAIPUR J140
HAZELDEAN C33
Sire: HAZELDEAN Q1237
CARABAR DOCKLANDS D62
HAZELDEAN J447
HAZELDEAN D684

HAZELDEAN JAIPUR J140
HAZELDEAN M205
HAZELDEAN J1511
Dam: HAZELDEAN P1273
VAR GENERATION 2100 USA17171587
HAZELDEAN M819
HAZELDEAN E31

Front	Rear	Front	Rear	Front	Rear	MUSCLE	TEMP.	SHEATH
6	5	5	6	4	5	C+	1	4

Structural EBV's			
TACE	ANGLE	CLAW	LEGS
	+0.72	+0.26	0.88
ACC%	61%	61%	56%

TRANSTASMAN ANGUS CATTLE EVALUATION - JUNE 2024																							
TACE	CALVING EASE				GROWTH & MATERNAL				FERTILITY		CWT	CARCASE					Doc	Angus Index	Dom	Heavy Grain	Heavy Grass		
	DIR	DTRS	GL	B Wt	200	400	600	MWt	Milk	SS	DC	C Wt	EMA	RIB	RUMP	RBV%	IMF%	Doc.					
EBV	-0.4	+1.5	-2.7	+4.4	+42	+85	+119	+69	+22	+3.2	-5.6	+72	+14.7	+0.7	+0.7	+1.4	+2.6	+37	+239	+189	+302	+232	
ACC%	66%	55%	84%	83%	84%	82%	83%	79%	75%	81%	45%	72%	71%	71%	72%	63%	76%	79%					

Thickness with very good feet. Moderate birth to better than breed average for 600d. Top 6% for docility and top 1% for EMA. Great mix of traits. Suitable for heifers.

Purchaser..... Price.....

Top 5% **Top 10%** **Top 30%**
Ranking in Angus Aust. Mid June 2024

Proven Genetic Performance

www.hazeldean.com.au

NEW ENGLAND 2024



SALE BULLS

61 HAZELDEAN T1113 (AI) SV APR AMFU NHFU CAFU DDFU Born: 09/08/2022 Society Id: NH222T1113

S S OBJECTIVE T510 0T26
G A R TWINHEARTS 8418
G A R YIELD GRADE 2015
Sire: CONNAMARA P64
TOPBOS AMBASSADOR F4
CONNAMARA
CONNAMARA G24

S A V RESOURCE 1441
LT DRIFTER 4073 USA18019663
LT ERICA 0121
Dam: HAZELDEAN N988
TE MANIA BERKLEY B1
HAZELDEAN F553
HAZELDEAN A792

Front	Rear	Front	Rear	MUSCLE	TEMP.	SHEATH
5	5	6	5	5	5	C+ 2 4

Structural EBV's			
TACE	ANGLE	CLAW	LEGS
	+1.08	+0.94	1.2
ACC%	68%	68%	65%

TRANSTASMAN ANGUS CATTLE EVALUATION - JUNE 2024																							
TACE	CALVING EASE				GROWTH & MATERNAL				FERTILITY		CWT	CARCASE					Doc	Angus Index	Dom	Heavy Grain	Heavy Grass		
	DIR	DTRS	GL	B Wt	200	400	600	MWt	Milk	SS	DC	C Wt	EMA	RIB	RUMP	RBV%	IMF%	Doc.					
EBV	+4.6	+3.1	-2.9	+4.4	+53	+112	+146	+134	+23	+1.5	-5.2	+87	+9.2	0	+0.3	+0.7	+3.6	+3	+247	+205	+324	+235	
ACC%	64%	54%	83%	81%	82%	80%	81%	77%	72%	79%	41%	69%	68%	68%	69%	60%	73%	76%					

This P64 son covers ground well shoots out the lights in the growth department. Top 7% for both 400d & 600d growth. Top 19% for EMA & IMF also. Top 29% for calving ease direct. Suitable for heifers. Note a little white at the base of testes.

Purchaser..... Price.....

62 HAZELDEAN T1071 (AI) SV APR AMFU NHFU CAFU DD50% Born: 08/08/2022 Society Id: NH222T1071

TE MANIA BERKLEY B1
HAZELDEAN F1023
HAZELDEAN B723
Sire: HAZELDEAN P709
HAZELDEAN GUARANTOR G52
HAZELDEAN M1192
HAZELDEAN H321

LAWSONS TANK VLY B1155
HAZELDEAN HARVEY H14
HAZELDEAN FUTURA B393
Dam: HAZELDEAN L983
HAZELDEAN FALTER F36
HAZELDEAN H864
HAZELDEAN F368

Front	Rear	Front	Rear	MUSCLE	TEMP.	SHEATH
6	6	6	6	5	5	C 1 3

Structural EBV's			
TACE	ANGLE	CLAW	LEGS
	+1.08	+0.68	1
ACC%	66%	66%	63%

TRANSTASMAN ANGUS CATTLE EVALUATION - JUNE 2024																							
TACE	CALVING EASE				GROWTH & MATERNAL				FERTILITY		CWT	CARCASE					Doc	Angus Index	Dom	Heavy Grain	Heavy Grass		
	DIR	DTRS	GL	B Wt	200	400	600	MWt	Milk	SS	DC	C Wt	EMA	RIB	RUMP	RBV%	IMF%	Doc.					
EBV	+4.7	+7.8	-3.1	+0.2	+40	+79	+110	+91	+21	+2.8	-3.6	+61	+4	+0.8	-0.1	+0.1	+5	+25	+192	+143	+261	+179	
ACC%	62%	51%	82%	81%	82%	80%	81%	77%	72%	78%	41%	69%	68%	68%	69%	59%	73%	75%					

Moderate birth with lots of calving ease traits. Top 5% for IMF. Note: a little eye scar. Suitable for heifers.

Purchaser..... Price.....

63 HAZELDEAN T1014 (AI) SV APR AMFU NHFU CAFU DDFU Born: 06/08/2022 Society Id: NH222T1014

HAZELDEAN JAIPUR J140
HAZELDEAN MAGNUM M586
HAZELDEAN H356
Sire: HAZELDEAN Q843
SYDGEN BLACK PEARL 2006
HAZELDEAN M656
HAZELDEAN F481

ARDROSSAN EQUATOR A241
HAZELDEAN JAIPUR J140
HAZELDEAN C33
Dam: HAZELDEAN P1085
HAZELDEAN HOKKAI DO H504
HAZELDEAN K1687
HAZELDEAN D1026

Front	Rear	Front	Rear	MUSCLE	TEMP.	SHEATH
6	6	6	6	5	5	C 1 4

Structural EBV's			
TACE	ANGLE	CLAW	LEGS
	+0.96	+0.76	1.12
ACC%	60%	59%	56%

TRANSTASMAN ANGUS CATTLE EVALUATION - JUNE 2024																							
TACE	CALVING EASE				GROWTH & MATERNAL				FERTILITY		CWT	CARCASE					Doc	Angus Index	Dom	Heavy Grain	Heavy Grass		
	DIR	DTRS	GL	B Wt	200	400	600	MWt	Milk	SS	DC	C Wt	EMA	RIB	RUMP	RBV%	IMF%	Doc.					
EBV	+0.4	+2.6	-4.9	+3.2	+58	+100	+140	+104	+21	+3.6	-4.3	+98	+4.9	-3.2	-2.5	+0.7	+0.6	+36	+199	+160	+253	+185	
ACC%	65%	54%	84%	82%	83%	81%	82%	78%	74%	79%	46%	72%	71%	71%	72%	62%	75%	77%					

A very good balance of eye appeal in the flesh, a well put together young son of Hazeldean Q843 who was a sale topper at a Cooma sale. A very appealing birth to growth spread, top 12% for 600d. Top 2% for carcass weight. Suitable for heifers.

Purchaser..... Price.....

Top 5% **Top 10%** **Top 30%**
Ranking in Angus Aust. Mid June 2024



HAZELDEAN
LITCHFIELD
EST 1865

NEW ENGLAND 2024

SALE BULLS

64 HAZELDEAN T857 (AI) PV APR AMFU NHFU CA17% DDFU Born: **04/08/2022**
Society Id: **NH22T857**

G A R INGENUITY
H P C A INTENSITY
G A R PREDESTINED 287L
Sire: **RENNYLEA NATIONWIDE N432**
TE MANIA BERKLEY B1
RENNYLEA H367
RENNYLEA F228

RENNYLEA EDMUND E11
HAZELDEAN LEAF L38
HAZELDEAN J87
Dam: **HAZELDEAN P1390**
HAZELDEAN BRAVE B195
HAZELDEAN BRAVE E470
HAZELDEAN V1045

Front	Rear	Front	Rear	Front	Rear	MUSCLE	TEMP.	SHEATH
5	6	6	6	5	5	C+	2	4

Structural EBV's			
TACE	ANGLE	CLAW	LEGS
	+0.96	+0.9	1.06
ACC%	69%	68%	67%

TRANSTASMAN ANGUS CATTLE EVALUATION - JUNE 2024																							
TACE	CALVING EASE				GROWTH & MATERNAL				FERTILITY		CWT	CARCASE					Doc	Angus Index	Dom	Heavy Grain	Heavy Grass		
	DIR	DTRS	GL	B Wt	200	400	600	MWt	Milk	SS	DC	C Wt	EMA	RIB	RUMP	RBY%	IMF%	Doc.					
EBV	-0.6	+1.2	-3.5	+4.3	+61	+108	+131	+155	+9	+1.6	-4.7	+7.6	+3.1	-1.4	-2.1	+0.8	+1.2	+16	+184	+168	+240	+161	
ACC%	63%	54%	82%	81%	82%	80%	80%	77%	73%	78%	42%	69%	68%	68%	69%	60%	73%	75%					

Nice birth to growth, moderate birth to top 12% for 400d growth. Top 13% for net feed efficiency. Suitable for heifers.

Purchaser..... Price.....

65 HAZELDEAN T2261 (Nat) PV APR AMFU NHFU CAFU DDFU Born: **01/09/2022**
Society Id: **NH22T2261**

HAZELDEAN JAIPUR J140
HAZELDEAN M182
HAZELDEAN K807
Sire: **HAZELDEAN R114**
HAZELDEAN HARVEY H14
HAZELDEAN LENNON L925
HAZELDEAN H338

CARABAR DOCKLANDS D62
HAZELDEAN M631
HAZELDEAN H1628
Dam: **HAZELDEAN P1070**
HAZELDEAN JAIPUR J140
HAZELDEAN M1174
HAZELDEAN J936

Front	Rear	Front	Rear	Front	Rear	MUSCLE	TEMP.	SHEATH
7	6	6	6	5	6	C	2	4

Structural EBV's			
TACE	ANGLE	CLAW	LEGS
	+1.14	+0.76	0.98
ACC%	61%	61%	59%

TRANSTASMAN ANGUS CATTLE EVALUATION - JUNE 2024																							
TACE	CALVING EASE				GROWTH & MATERNAL				FERTILITY		CWT	CARCASE					Doc	Angus Index	Dom	Heavy Grain	Heavy Grass		
	DIR	DTRS	GL	B Wt	200	400	600	MWt	Milk	SS	DC	C Wt	EMA	RIB	RUMP	RBY%	IMF%	Doc.					
EBV	+2.5	+1.6	-5.9	+3.5	+39	+70	+97	+76	+15	+3.1	-7.1	+5.6	+1.9	+2.9	+4.3	+0.4	+0.6	+29	+181	+152	+220	+171	
ACC%	61%	50%	81%	80%	82%	79%	80%	76%	71%	78%	39%	68%	67%	67%	69%	58%	73%	74%					

Very easy doing and moderate build with plenty of dependable Hazeldean blood in the pedigree. Lots of calving ease and excellent fats. Top 8% for days to calving. Suitable for heifers.

Purchaser..... Price.....

66 HAZELDEAN T2174 (Nat) SV APR AMFU NHFU CAFU DDFU Born: **28/08/2022**
Society Id: **NH22T2174**

G A R PROPHET
BALDRIDGE BEAST MODE B074
BALDRIDGE ISABEL Y69
Sire: **HAZELDEAN R226**
MILLWILLAH COMPLEMENT NJWK108
HAZELDEAN N144
HAZELDEAN L94

TE MANIA BERKLEY B1
HAZELDEAN JET BLACK J511
HAZELDEAN E551
Dam: **HAZELDEAN L1014**
HAZELDEAN ADMIRAL D966
HAZELDEAN J321
HAZELDEAN E74

Front	Rear	Front	Rear	Front	Rear	MUSCLE	TEMP.	SHEATH
6	5	5	6	5	5	C	1	4

Structural EBV's			
TACE	ANGLE	CLAW	LEGS
	+1.12	+0.92	0.96
ACC%	66%	66%	61%

TRANSTASMAN ANGUS CATTLE EVALUATION - JUNE 2024																							
TACE	CALVING EASE				GROWTH & MATERNAL				FERTILITY		CWT	CARCASE					Doc	Angus Index	Dom	Heavy Grain	Heavy Grass		
	DIR	DTRS	GL	B Wt	200	400	600	MWt	Milk	SS	DC	C Wt	EMA	RIB	RUMP	RBY%	IMF%	Doc.					
EBV	+6.9	+6.8	-2.3	+3.3	+60	+107	+142	+128	+20	+1.6	-3.2	+8.7	+2.7	-3.7	-4.8	+0.7	+0.5	+31	+188	+159	+243	+169	
ACC%	64%	54%	81%	80%	82%	80%	80%	77%	73%	78%	40%	68%	67%	67%	68%	58%	72%	75%					

Curve bender deluxe! Top 12% for 200d, 400d & 600d. Top 7% for carcass weight. Plenty of calving ease. Suitable for heifers. Note: small eye scar

Purchaser..... Price.....

Top 5% **Top 10%** **Top 30%**

Ranking in Angus Aust. Mid June 2024

Proven Genetic Performance

www.hazeldean.com.au

NEW ENGLAND 2024



SALE BULLS

67 HAZELDEAN T759 (A1) PV APR AMFU NHFU CAFU DDFU Born: **03/08/2022**
 Society Id: **NHZ22T759**

ARDROSSAN EQUATOR A241
 HAZELDEAN JAIPUR J140
 HAZELDEAN C33
Sire: HAZELDEAN Q1237
 CARABAR DOCKLANDS D62
 HAZELDEAN J447
 HAZELDEAN D684

G A R PROPHET
 BALDRIDGE BEAST MODE B074
 BALDRIDGE ISABEL Y69
Dam: BURENDA MARIGOLD Q355
 BURENDA KEMANO K572
 BURENDA MARIGOLD M643
 RENNYLEA C664

Front	Rear	Front	Rear	Front	Rear	MUSCLE	TEMP.	SHEATH
6	6	6	6	5	5	C	2	4

Structural EBV's			
TACE	ANGLE	CLAW	LEGS
	+0.86	+0.58	1.06
ACC%	65%	65%	63%

TRANSTASMAN ANGUS CATTLE EVALUATION - JUNE 2024																						
TACE	CALVING EASE				GROWTH & MATERNAL				FERTILITY		CWT	CARCASE					Doc	Angus Index	Dom	Heavy Grain	Heavy Grass	
	DIR	DTRS	GL	B Wt	200	400	600	MWt	Milk	SS	DC	C Wt	EMA	RIB	RUMP	RBY%	IMF%	Doc.				
EBV	+6.6	+5	-4.3	+3.4	+42	+80	+99	+62	+17	+4.1	-7.1	+57	+7.3	-0.1	-0.4	+1.3	+1	+15	+223	+200	+271	+212
ACC%	65%	56%	83%	82%	83%	81%	81%	77%	74%	79%	44%	70%	69%	69%	70%	61%	74%	78%				

Even type out of a Beast Mode cow. Plenty of calving ease and industry leading fertility. Top 8% for days to calving and top 5% for scrotal size. Top 10% for retail beef yield. Suitable for heifers.

Purchaser..... Price.....

68 HAZELDEAN T2283 (Nat) SV APR AMFU NHFU CAFU DDFU Born: **02/09/2022**
 Society Id: **NHZ22T2283**

G A R PROPHET
 BALDRIDGE BEAST MODE B074
 BALDRIDGE ISABEL Y69
Sire: HAZELDEAN R226
 MILLWILLAH COMPLEMENT NJWK108
 HAZELDEAN N144
 HAZELDEAN L94

EF COMPLEMENT 8088
 MILLWILLAH COMPLEMENT NJWK108
 MILWILLAH MITTAGONG H257
Dam: HAZELDEAN N565
 TE MANIA YORKSHIRE Y437
 HAZELDEAN G615
 HAZELDEAN B1426

Front	Rear	Front	Rear	Front	Rear	MUSCLE	TEMP.	SHEATH
6	5	6	6	4	5	C+	1	4

Structural EBV's			
TACE	ANGLE	CLAW	LEGS
	+0.84	+0.8	1.06
ACC%	60%	60%	56%

TRANSTASMAN ANGUS CATTLE EVALUATION - JUNE 2024																						
TACE	CALVING EASE				GROWTH & MATERNAL				FERTILITY		CWT	CARCASE					Doc	Angus Index	Dom	Heavy Grain	Heavy Grass	
	DIR	DTRS	GL	B Wt	200	400	600	MWt	Milk	SS	DC	C Wt	EMA	RIB	RUMP	RBY%	IMF%	Doc.				
EBV	+2.5	+4.1	+0.1	+5.7	+65	+119	+150	+134	+20	+2.2	-5.4	+93	+2.6	-1.4	-1.3	+0.9	+1.1	+41	+242	+215	+308	+224
ACC%	66%	57%	83%	82%	83%	81%	82%	78%	75%	79%	43%	70%	70%	70%	71%	61%	75%	77%				

Great heel depth was noted in the yards looking at the bull. This feeds into the foot angle EBV which he is top 14%. Top 5% for 600d growth, top 3% for docility and 400d growth.

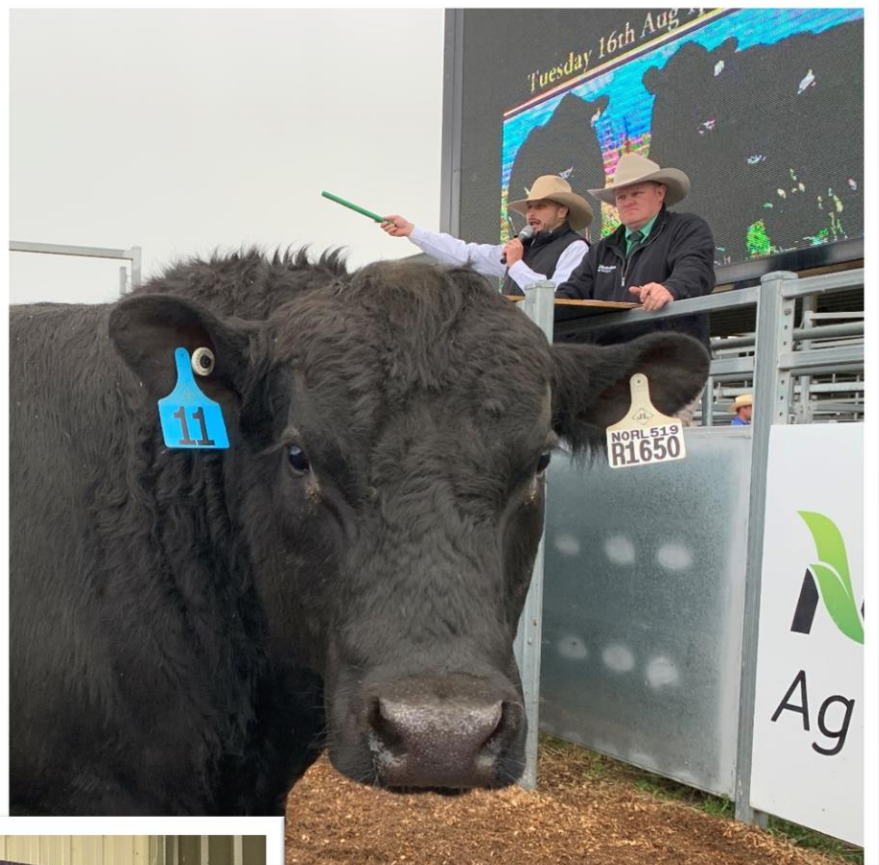
Purchaser..... Price.....



Top 5% **Top 10%** **Top 30%**
 Ranking in Angus Aust. Mid June 2024

Proven Genetic Performance

www.hazeldean.com.au



Hazeldean Semen Terms & Conditions

Hazeldean retains semen rights on all bulls unless otherwise agreed upon.

- 1 The buyer may use bulls only:
 - To naturally service stock owned by the buyer, or
 - To collect semen for use in stock owned by the buyerAnd will not dispose of, or advertise the disposal of semen or semen rights from any bull to any other party.
- 2 Hazeldean retains the right to collect and market semen from any bull sold either at the buyer's premises or by transporting the bulls to a registered artificial insemination facility on the basis:
 - That Hazeldean will consult with the buyer and ensure that such collection of semen by Hazeldean will take place at a time which will not unreasonably interfere with the use of the bull/s by the buyer
 - Hazeldean will pay all costs of such collection: and
 - Hazeldean will indemnify the buyer in respect of any injury or damage to such bull during the collection process or while the bull is in Hazeldean's possession.
- 3 The semen rights terms bind any successor in title to the buyer, and any person in possession of bulls purchased from Hazeldean.
- 4 The buyer will not dispose of or part with possession of any bull the subject of the semen rights terms unless the party to whom disposal is to be made or to whom possession is to be given first, signs a document accepting the semen terms accrue for the benefit of Hazeldean, and Hazeldean can enforce the semen rights terms.
- 5 The buyer acknowledges:
 - That the physical transfer of bulls from Hazeldean to the buyer is an act that accepts the semen rights terms;
 - That the bulls subject to the semen rights terms are adequately described in the documents of sale, which includes any sale or auction information;
 - That Hazeldean may register the interest created by the semen rights terms pursuant to the Personal Property Securities Act 2009 of the Commonwealth;
 - That Hazeldean may take possession of the bull dealt with in any way that contravenes the semen rights terms;
 - That the buyer, and any successor in title to the buyer and any person to whom the buyer passes possession of the bull will be liable jointly and individually for the reasonable expenses of Hazeldean under the semen rights terms, any reasonable expenses in enforcing those terms.



PREPARE YOUR BULLS BEFORE JOINING



Vaccinating bulls is the key to prevention of vibriosis.

Vibriosis is a major venereal disease and can cause infertility and abortion in cattle.

Conception rates can drop as low as **40%**¹

Vaccinating bulls is effective and practical

- It can lead to increased pregnancy rates
- It has no adverse impact on testicular function and semen morphology²



AVAILABLE AT YOUR LOCAL RURAL SUPPLIER

1. Hum S. NSW Department of Primary Industries (DPI) February 2007. *Primefact*, 451.
2. Zoetis Study Number B930R-AU-14-285. Data on file.

Zoetis Australia Pty Ltd. ABN 94 156 476 425. Level 6, 5 Rider Boulevard Rhodes, NSW 2138. © 2019 Zoetis Inc. All rights reserved. ZL1079. 03/19



LivestockSolutions Information in your hands

ZOETIS.COM.AU/LS





HAZELDEAN
LITCHFIELD
EST 1865

Ed Bradley
0412 298 546

Bea Litchfield
0427 933 103

Jim Litchfield
0417 676 561

Hazeldean Office 0428 314 838
admin@hazeldean.com.au

www.hazeldean.com.au