

Genevieve Sage 19/3/24

Waitematā Local Board Chair, Genevieve Sage's Report
March 19th, 2024, Local Board Business Meeting
Covering the period 6th February 2024 to 7th March 2024



Key Areas of Focus during this timeframe.

My other board roles include:

Portfolio Lead: Community – Parks and Open Spaces

Co Portfolio: Natural Environment

External Organisations:

Auckland City Centre Advisory Panel Representative

Newmarket Business Association (Lead)

Parnell Business Association (Alternate)

Village Square Trust (Lead)

Auckland Central CAB and Ponsonby/ Grey Lynn CAB (Alternate)

CRL Te Waihorotiu Station (Aotea) Community Liaison Group (Lead)

Central City Community Safety Taskforce (Lead)

LGNZ (Alternate)

Lead – Wynyard Quarter Transport Management Association (WQTMA)

Genevieve Sage 19/3/24

Items of Note:

The Long-Term Plan 2024-2034

It is really important you give us your views on the Long-term Plan (LTP) 2024-2034. By the time you read this report the Council will be well into the 'Have Your Say' time period for the LTP. If you have not already made a submission there are still around 9 days from this Business Meeting to have your say.

You can find out more information by checking out the akhaveyoursay.nz website or calling for more information on (09) 301 0101. Key messages and issues that are highlighted in the LTP aim to strengthen Auckland's physical and financial resilience – there is a need to tackle big budget challenges.

These are:

- Adapting to economic fluctuations such as interest rates and inflation
- Paying for growth
- The rising cost of asset ownership
- Storm response and resilience
- The limited number of different tools to fund and finance Council's activities and services.

What we need to do:

- Balance - provide a balance of services and activities.
- Spend more on what's needed.
- Includes Getting Auckland moving - AT will be spending \$13.4 Billion on transport assets over the next 10 years.
- Plus CRL. Getting ready!
- Public Transport - faster, more reliable, and easier.
- Strengthen Auckland's resilience to flooding events over the 10 years - through the Making Space for Water programme.
- Spend - physical flood protection and prevention awareness programmes.

The LTP proposal consists of a The Central Proposal - the main proposal is compared with pay more get more and pay less get less scenarios. We all need to be thinking about the 'now' but also be future focused and remember that we want to leave a legacy of good stuff for our future generations.

Make sure you take a look at the Waitematā Local Board Key Priorities and have your say on these areas as well. These are outlined in the boxes below:

Genevieve Sage 19/3/24

Waitematā Local Board

Key Priorities for 2024/2024
<ul style="list-style-type: none">• Work with the community to investigate future options on improving library services across Waitemata• Progress the development and implementation of the Omnibus Local Parks Management Plan which includes Dove-Myer Robinson Park, and Victoria Park• Implement the 2013 Waitematā Greenways Plan and work with Parks and Community Facilities and Auckland Transport to deliver key walking and cycling connections.
<p>The following priorities sit outside local board decision-making and require advocacy to the Governing Body or another entity:</p> <ul style="list-style-type: none">• Advocate to the Governing Body to ensure regional funding of city centre projects and initiatives focussed on improving safety and perceptions of safety• Advocate to the Governing Body for investigation and implementation for fair funding of regional and sub-regional services, such as for our aquatics network• Advocate to the Governing Body to progress the next phase of the Waterfront Programme including the design of a new city centre park guided by the Te Ara Tukutuku Plan
<ul style="list-style-type: none">• Advocate to the Governing Body for continued measures to ensure water quality improvements to mitigate impacts on our waterways, catchments, beaches, and harbours• Advocate to the Governing Body for the restoration of Auckland Council's membership of Local Government New Zealand.

There is a lot to consider and some challenging decisions to make! Please 'Have Your Say'!

Hearing of the proposed lease of Salisbury Reserve to Watercare/ Extraordinary Business Meeting

The proposed use of the park is to support the delivery of a major infrastructure project that will contribute to the wellbeing of communities in the LB area and for the benefit of Aucklanders. The Herne Bay Trunk Sewer Upgrade is designed to reduce wastewater overflows significantly and improve water quality at local beaches.

Weighing up the additional cost to ratepayers and the loss of public amenity to Aucklanders of an alternative Watercare solution vs the loss of amenity for Herne Bay residents the following points were considered thoroughly:

- The adverse impacts on Watercare are:
 1. Alternative locations would be less efficient.
 2. More distant from the shaft construction sites.
 3. Create more disruption for longer and to more people.
 4. Create increased traffic impacts (requiring greater traffic management) at increased cost.
- The adverse impacts on the public:
 1. The local value (including social, physical and psychological benefits) and importance of green open space.
 2. Environmental/ ecological impacts destruction of landscaping – trees, plants and animals.
 3. Loss of flat recreation space – impacts on the elderly vulnerable members of the community disabled/ accessible walking, sport, dog exercise, social activities.
 4. Disruption to adjacent landowners – noise and pollution.
 5. Potential impacts of flooding and contamination.
 6. Concern that alternative locations have not been sufficiently explored.

Genevieve Sage 19/3/24

- The loss of amenity value for Herne Bay residents for 1/3 of the park being leased.

I don't want to underestimate that it will be an imposition.

However, there will be significant mitigating factors which will reduce the impact on Herne Bay residents:

- The proposed lease is for 1/3 of the park only.
- There is a revised site layout plan – providing the retention of the vegetated planting strips bordering the access way off Argyle Street. We have recommended that additional mitigation planting be required as part of the reinstatement. To enhance restoration of the ecological features of the park.
- Access to and through the park is not impaired – the existing pedestrian walkways between Salisbury and Argyle Street will remain open to the public – people can continue to take exercise.
- Dog walkers will be able to exercise their dogs on leash in accordance with the park rules in the two remaining green spaces. The LB are recommending an investigation into the existing dog controls in the park be reviewed and consider designating an area of the park as an off-leash area in the future.
- Disruption will be minimised with operating hour restrictions and fencing to provide sound and visual screen barriers.
- The lease would require the tenant to comply with their resource consent conditions. (provision of storage of dangerous substances and stormwater management will be determined under the resources consent conditions and under relevant legislation).
- Watercare has indicated they will have a nominated community liaison person to address and concerns as they arise.

The panel also considers it is relevant that the rental revenue received under the lease may provide an opportunity for provision of community events, additional park amenity and future park improvements.

So, the negative impacts of Watercare having to adopt an alternative solution significantly outweigh the loss of amenity value for Herne Bay residents.

- There is optimal proximity to the construction shaft sites.
- Workable flat area and useable space, provides for efficient demobilisation of roadside construction areas to minimise traffic link disruption.
- Central location will reduce light vehicle access to and from the construction shaft sites.
- Flat grassed area can be used without significant earthworks for site establishment and reinstatement.
- Access to residential properties would not be impacted (the use of alternative sites would not negate the need to use Salisbury Reserve).

Genevieve Sage 19/3/24

Quick Wins

There have been a few. This one is along the Strand, on the footpath, Thank you AT. Please, if you see something like this use the [Report a Problem](#) on the Council website.



General/ Assigned Roles Update

Community Parks and Open Spaces including Community Facilities

Highlights from the P & CF monthly report:

Our first local board report for 2024 covers December 2023 and January 2024.

Thankfully, we have started the year off more or less in BAU, unlike last year when we were dealing with the aftermath of the January storms. 'We of course will continue to strive hard across P&CF to deliver the outcomes you, our community and we desire for our local board area'.

Requests for service received: RFS continued to stay steady, plumbing maintenance requests were high during the 2 months, but there is a decrease in total work orders compared to this time last year. Plumbing, loose litter and electrical remain top priority due to the wet weather throughout the year. Other areas such as cleaning, tree maintenance remain steady. We are working with the contractor to ensure all facilities are presented to a high standard for all to enjoy.

Highlights show that our contractors are performing well with turf maintenance, streetscapes and building cleaning. Our focus is still to improve on track maintenance and response work orders.

Western Springs Lakeside Playground: Due to vandalism, one of the "bongo" drums lost its lid. A number of solutions to "solve" the problem were utilised until a new cover was made. It was used as a rubbish bin, then a more temporary rubbish bin lid was affixed to stop it being used as a rubbish bin until the red top cover (drum top) was received from the manufacturer. The drums are now all back in working order – whew!

Genevieve Sage 19/3/24

Awatea Reserve Storm Remediation: Last year's floods caused a slip at Awatea Reserve. To remediate the issues, we installed: - fencing to protect from the slip area. - planting. - a renewed pathway. - connections to the storm water system. This has now been completed through great collaboration. Work will now begin on bringing the site up to specification that it has been deprived of during the project. Fencing has been erected to protect the public users from accessing the slip.

Newmarket Park – picnic table revitalisation

Dove Myer Robinson Park: During high winds one of the trees came down which posed a health and safety issue. Our full facilities contractor attended quickly to install a permanent safety fence whilst allowing users of the park to continue using the path.

Grey Lynn Toilets rainbow seat: The rainbow inclusive seat needed a refresh and was mistakenly painted green. After some confusion between two different seats and one work order, this was eventually corrected. We now have the seat repainted in the original rainbow colours.

594 Great North Road public toilets: After receiving a complaint regarding the public toilets at 594 Great North Road, Grey Lynn the contractors attended quickly to cover the hole in the men's bathroom. When the plate was removed again, the contractor returned to apply a more secure plate. These public toilets are about to undergo a full renewal, and a more durable wall is being installed which should prevent this from occurring in the future. We are looking forward to seeing the full renewal!

Bella Vista Reserve stairs: Our contractors notified us of this health and safety risk at the Bella Vista Reserve stairs while attending another job. The reserve was closed for public safety and the stairs were made safe until the structural integrity was investigated. On investigation they were deemed safe to reopen and the stairs will be remediated.

Arboriculture maintenance delivery: December and January are typically a quieter period in the region which presents a great opportunity for arboriculture works to take place in areas that are usually tough to work in during the other months due to streets being busy. Streets like Nuffield St in Newmarket where able to be pruned.

Unfortunately, while undertaking tree maintenance our team every so often come across trees that have been deliberately poisoned, people will do this for a variety of reasons but more commonly it will be for a view. When this happens, we will refer the case to the compliance team, they will investigate and act accordingly should they find out who the perpetrator is, this is not always successful if no one comes forward with information. One thing the maintenance team can do, is prune the tree in a way that ensures any hazard is eliminated and leave the tree as a stem. Maintaining the stem serves as an invitation for community engagement. By openly displaying our efforts to salvage the tree, we hope to encourage people to come forward with any information they may have regarding the poisoning incident. Community involvement is crucial in understanding the circumstances surrounding the event and, if possible, identifying those responsible, being pruned in this way we are also creating an opportunity for the tree to potentially trigger an epicormic response. This response may lead to the emergence of new shoots or branches from dormant buds on the stem, showcasing the tree's resilience. Please look after our trees!

Genevieve Sage 19/3/24

Parnell Baths: The Parnell Baths continues to operate smoothly, providing refreshing retreat for individuals seeking respite from Auckland's summer heat. The facility remains popular among locals and visitors alike, with a steady influx of patrons enjoying its amenities.

Endeavour Park – Newmarket: Imminent re-invasion – Ecological threats from the borders it reads like a sci-fi space novel, but rather than Martians invading Earth, invasive weeds are a real and constant threat that our eco-areas experience daily. Our native defenders are Wildlands and other eco-contractors that contractually have relatively limited opportunity to rid our high-value green spaces of species that have evolved to suppress and dominate. New Zealand's 'naive' natives have had little time to mount a counter-attack and, without aid, will succumb to invasive regimes.

The above, although sounding fantastical and fictitious, is what is taking place in parks all around the country. Endeavour Park is one such area where private, adjoining properties are a sea of weeds attempting to poke holes in our perimeter defense. Blue morning glory, ginger and black-eyed Susan's represent the front-line aggressors. Then there are the long-range attacks from wattle, castor bean, buddleja and bears breeches. One of these plants taking hold would be like a secret invasion and our eco-snipers must eliminate the threat before it becomes unstoppable.

At present, the RPMP has not activated the 500m buffer programme in this area, however, it is scheduled for the near to mid-future. Once operating, species like ginger, moth plant, woolly nightshade, and climbing and bushy asparagus will be required to be removed from private properties within 500m of some parks, however, many threatening invasives will still be allowed to exist and their damage could be disastrous and costly for our reserves. We must ensure our 'defense' budget spending is secure for the suit of weeds, otherwise the invasive invasion will succeed in their hostile takeover.

Grey Lynn Park: Post the Grey Lynn Park festival, summer renovations commenced at the park. The early summer wet weather has severely challenged this sports asset, so we set about scarifying the field. This process involves the removal of thatch the layer of dead grass, roots, and debris that accumulates between the soil surface. 5mm detaching of the cover helps with improved drainage and better absorption of fertilisers to support the plant's health.

Victoria Park Skatepark Renewal: The contractor used the quieter period over the Christmas break to close off the skatepark section by section to grind the concrete of the skate bowls and street areas for a smooth surface section by section. The concrete was then treated with a penetrating densifying sealer to harden the surface. Work to renew the timber ramp begins the week of February 12th.

Newmarket Business Association – lead

Message from the CEO – Mark Knoff-Thomas (snapshot)

'January spend was \$55.9M, versus \$62M in 2023 (still our third-best January on record). Based on anecdotal feedback, it's fair to say our consumers may have stayed away a bit longer at their baches to enjoy the summer weather. The summer weather has impacted us more than other retail areas, based on our consumer demographic.'

FEBRUARY BOARD MEETING

Genevieve Sage 19/3/24

An overview of February's Board meeting:

Board members gave updates on their respective sectors:

- Sentiment across most sectors seems to be reasonably flat.
- Potential interest rate drops ahead will help with economic activity.
- Retail/ hospo have had a challenging start to the year.
- Decision-making/ deadlines are being pushed out as there seems to be an air of "wait and see".
- Newmarket Security's Incident Management Report recorded 334 incidents in January.
- We discussed our feedback for Auckland Council's Long-Term Plan consultation.

The Newmarket Business Awards will be held in November this year.

CRL Te Waihorotiu Station (Aotea) Community Liaison Group – Snapshot Update

The Te Waihorotiu Station team marked an end of an era this month with the disassembly of the station's tower crane affectionally known as George. A feature of the midtown skyline, the crane was setup in 2020 and named George following a public submission process. George was 65m tall with a 50m lifting jib, and over the past four years he conducted around fifty lifts on a busy day. The crane was dismantled in just one day using a mobile crane and a crew of specialist crane operators.

We are now approximately halfway through the Te Waihorotiu Station streetscape upgrade programme! To mark this milestone, we have released a new staging map outlining progress so far and what's yet to come. [Click Here](#).

Wellesley Street entrance building

- A huge amount of internal fit-out and cable pulling is taking place inside the building - in total across the station we are installing over 275km of cable! The Wellesley superstructure houses the vast array of back-of-house services required to operate and maintain the station and tunnels.

Outside, we are now installing thousands of aluminum fins onto the building's dark concrete, in a range of different colours. This upper façade design treatment is an expression of the tears of Ranginui (the sky father). We can't wait to take down the temporary scaffolding later this year for the big reveal!

Victoria Street entrances

Te Waihorotiu Station is expected to be New Zealand's busiest train station – and to cater for the thousands expected to use the station each day we have built three public entrances to the underground station. Once the glass is fully installed and watertight, we will continue on with internal fitout inside including the ceiling, lift and escalators down into the station.

Genevieve Sage 19/3/24

Passenger concourse level

- Concourse ceiling installation continues to progress well - including the very smart ceiling wrap-ups into our seven skylights and our metal composite ceiling beams that look just like wood (real wood cannot be installed underground due to the risk of fire).
- Lifts and escalators continue to be commissioned and fitted out, connecting the passenger concourse level to the train platform level below.

Concourse level floor tile installation will start in a few months.

Platform and train track level

- Trains will run on either side of the now completed passenger platform structure – one southbound towards Karanga-a-Hape Station and the other northbound toward Waitematā Station (Britomart).

[Rail track installation is now fully complete](#) in both northbound and southbound rail corridors on either side of the platform, and throughout the CRL tunnels!

It is all looking pretty exciting!

Economic data shows Auckland city centre outpacing New Zealand

For the second year in a row Auckland’s city centre has outpaced New Zealand in both GDP and employment growth, [according to information released by Auckland Council](#). GDP in the city centre grew by 9.2 per cent in the year to March 2023, reaching \$30.4 billion, according to the latest Auckland City Centre Overview by Infometrics. That growth rate was well ahead of New Zealand as a whole, which increased by 2.8 per cent in the same period.

Meetings and Events Attended – Highlights


Of note: the food scraps collection rollout. <https://www.aucklandcouncil.govt.nz/rubbish-recycling/food-scrap-collections/Pages/default.aspx>

<u>Date</u>	<u>Activity</u>	<u>Outcome</u>
Tuesday 6 th February	Waitangi Day	


Genevieve Sage 19/3/24

Item 20

Attachment A

Wed 7	Deliberations of submissions on the Salisbury Reserve Lease	Please read deliberations above.
	WLB Workshop	<ul style="list-style-type: none"> - AT Road safety engineering projects update, introduce Local Active Modes Plan project. - BID presentations – KBA, NBA and Ponsonby BA - 254 Ponsonby Rd Detailed Design update - Sites of Significance – confidential - Budget Reallocations
	Central Citizenship Ceremony	<p>A wonderful event to celebrate our new New Zealanders. It is an honour to be part of the Local Board Chair team that run this event.</p> 
Thurs 8	Meeting with CEO Rohan West of Tennis Auckland	Rohan introduced me to the roof concept, and I thought it would be a great idea for him to provide the board with a Deputation at our Feb Business Meeting. I also recommended that he attend a Domain Committee meeting.
	PCF/LB catchup	Discussion about funding and CF, renewals, LTP and what this means for the LB
	Opening of The Robertson Gift – Auckland Art Gallery Toi o Tāmaki	
Fri 9	Meeting with Christina from the Chinese Herald	


Genevieve Sage 19/3/24

	Hyperspace at the ASB Waterfront Theatre – a wonderful evening of entertainment.	
Sat 10	Synthony in the Domain	Amazing – Thanks TAU! A beautiful extravaganza of music and lights, simply world class show.
Sun 11		
Mon 12	Meola Road and Point Chevalier site visit	
	Chair/ PA Catchup	
	LB Chair’s Forum	
	WLB Chair/ Deputy/ Staff catchup	NB: Deputy Chair Absent
Tues 13	WLB Workshop	<ul style="list-style-type: none"> - City Centre – Eke Panuku update - BID Presentations – Uptown, Parnell BA - Freemans Bay Community Centre - INS – Waipapa stream restoration project discussion.
Wed 14	WLB meeting with CEO Chamber of Commerce Simon Bridges	
	Opening of the new Women’s Refuge office	A time of joy and romance for many, this Valentine’s Day will mark the official opening of the refuge and the choice of day is no accident, calling awareness to family and intimate partner violence. In Aotearoa New Zealand, nearly half of all homicides and reported violent crimes relate to family violence. Raising awareness for our community is an essential step in stopping this atrocity that affects so many of us – and yet we suffer in silence – knowing that there are people who care and who are there is important. Teaching


Genevieve Sage 19/3/24

Item 20

Attachment A



		<p>the perpetrators not to behave in this way is another step that is really essential in calling this out.</p> 
Thurs 15	Administrative tasks	
Fri 16	Chair Sage/ Cr Fairey Catchup	
	LTP 24-34 LB Briefing	
	Meeting with Simon Oddie Eke Panuku	
Sat 17	Auckland Rainbow Parade	
Sun 18		
Mon 19	Chair/ PA Catchup	
	Agenda Runthrough	
Tues 20	WLB Business Meeting	
Wed 21	Meeting with LAM	
Thurs 22	WLB Comms Meeting	
	Administrative tasks	
Fri 23	Advisory Panel Agenda Briefing	
	Moana/ Oceans Festival Opening Ceremony and networking event	A great fun event, wonderful to see True Bliss again! Brings back memories – and we danced – very cool!

Genevieve Sage 19/3/24


		
Sat 24	Station Square Event – Young, Wild and Free Music Concert at Newmarket	
Sun 25	Judges Bay Meeting	
Mon 26	Chair/ Deputy Chair/ Staff catchup	NB: Deputy Chair absent
	Agenda run through Extraordinary Business Meeting	
	Chair/PA Catchup	
	CCAP meeting/ workshop	
Tues 27	Extraordinary BM Salisbury Reserve	
	WLB and Deputy Mayor meeting	<p>The purpose of this non-public meeting is to discuss:</p> <ul style="list-style-type: none"> • Key elements of the Long-term Plan including the different options the Mayor has included • Key priorities for local boards for the long-term plan in their area <p>Other key issues in local board areas that governing body should know about</p>
	WLB Workshop	<ul style="list-style-type: none"> - Reorganisation /Representation review - Parks and CF update - Connected communities – introduce the boards new Art Broker.
Wed 28	Meeting with constituents on Harcourt Street in Grey Lynn	To discuss traffic speed/ management and solutions to this.

Genevieve Sage 19/3/24

Item 20
Attachment A

	Planning, Environment and Parks Committee Meeting	
	KBA Meeting with AT re Bus Lanes	
	Auckland Bowling Club Event	<p>Many thanks to Tony Banks and the crew at the Auckland Bowling Club on the Domain for a wonderful evening – Alex Bonham and I are now ace at bowling! No... Really! If you have not had an opportunity to play prior to now – there is no time like the present – it’s really great fun.</p> 
Thurs 29	NBA February Business Meeting	
	WLB Good Citizen Awards Ceremony 2023	<p>What a beautiful evening of celebration for our WLB Good Citizens who make a real, positive difference in our community – our unsung heroes who don’t expect glory but give with their hearts. Thank you for all that you do and for your kindness.</p> 
Fri 1 March	Watercare meeting with David Seymour and Constituents	
Sat 2		
Sun 3		

Genevieve Sage 19/3/24

Mon 4	Media first look at artist Joe Sheehan's Lost and Found – Federal Street	<p>What a beautiful, worldclass piece of artwork – or pieces of artwork. You must all get to Federal Street to have a look and a walk through, the large boulders came from all around the country and the hours of intricate and loving work that has gone into crafting these contemporary pieces of art is phenomenal. There are 8 pieces along the street that tell a story, and invoke different emotions and feelings.</p> 
	Chair/ Senior Advisor Catchup	
	Chair/ PA Catchup	
Tues 5	WLB Workshop	<ul style="list-style-type: none"> - AT – Room to Move and introduction to Project Kōkiri - LBAP5 – Performance Measures - IES – Te Wharekura partnership - Heart of The City BID Presentation – annual compliance reporting. - IES – update on the 'Making Space for Water' project
Wed 6	WQTMA Board Meeting	Update on Fareshare for PT, WQ Innovation Precinct Presentation.
	Meeting with WLB Lead Financial Advisor	Go through LB financial reporting
Thurs 7	Meeting with the Chinese Herald	
	BCCG – food scraps collection meeting	

Genevieve Sage 19/3/24

Item 20



Thank you for reading 😊

Attachment A

Waitematā Local Board
March 2024

Alexandra Bonham Elected Member Report

This report covers my Waitematā Local Board Activities from 1-29 February 2024. My roles include:
Lead Environment and Infrastructure
Lead People and Diversity
Alternate Planning and Heritage (lead on Resource Consents)
Member, Domain Committee

Liaison Grey Lynn Business Association
Liaison Ponsonby Business Association
Liaison Grey Lynn Residents Association
Liaison Herne Bay Residents Association
Liaison Maungawhau/Mount Eden CRL station
Liaison Hapua Thrive and Middleton Stream project ("On the Deck")
Alternate liaison Karanga a hape CRL Station FF
Alternate liaison Village Square Trust

ENVIRONMENT & INFRASTRUCTURE

Water Issues

Visit to the Central Interceptor

It was great to go and see the Central Interceptor site in Mangere with other board members and councillors. There are six pumps, which dwarf mere humans and would not be out of place in an Isambard Kingdom Brunel fantasy. We will usually only need one, but having six means some can be removed for maintenance if required, and if there is major flooding more can be put to use to push water through the system and into the processing plant. Watercare are also exploring ways to improve the quality of water coming out of the plant to be of as high or higher standard than other drinking water. This project began in 2020 after a series of droughts. The Waitematā Local Board played a small role here, in passing a notice of motion in 2020 about the need to progress with Watercare's climate resilience water strategy, that was picked up by then Planning Committee Chair Chris Darby in the Governing Body and aligned with thinking of the Watercare CEO. Since then Watercare have been putting greater focus and investment into establishing new sources of water. Planning for resilience is needed and great to see in action. Pic below of me in the research lab.

Waitematā Local Board
March 2024



Cox's Bay

There is an ongoing presence of wastewater (the milky white/grey water, toilet paper remnants and reported smell). We would expect to see this at low tide here as there are several engineered wastewater overflow points in this area. This will be mitigated by the completion of the Central Interceptor project by Watercare, which is scheduled for 2025. The Central Interceptor project will add over 226,000 m² of storage capacity to the wastewater network. This additional capacity means that there will be less overflows during wet weather events in the areas of legacy combined stormwater/wastewater network, such as the Cox's Bay area.

Orange mud is not a concern. It is a natural occurrence of iron oxide in the soil mixing with the stream. If anyone sees evidence of a historic wastewater overflow, i.e. Wet wipes in the stream, they [can report this to Watercare](#) who can dispatch people to clean this up. If people see evidence that might be an active overflow, they should call the Council's [pollution hotline](#) who can work out exactly where it's coming from and assign it to the correct agency responsible.

Healthy Waters is assessing tidal flushing of the stream and determining whether a business case for further work is viable (financially) and needed. If the wastewater coming through is not being flushed by the tide, this would be a health and safety issue that would need to be addressed promptly. We are grateful to all residents who help report issues so they can be addressed.

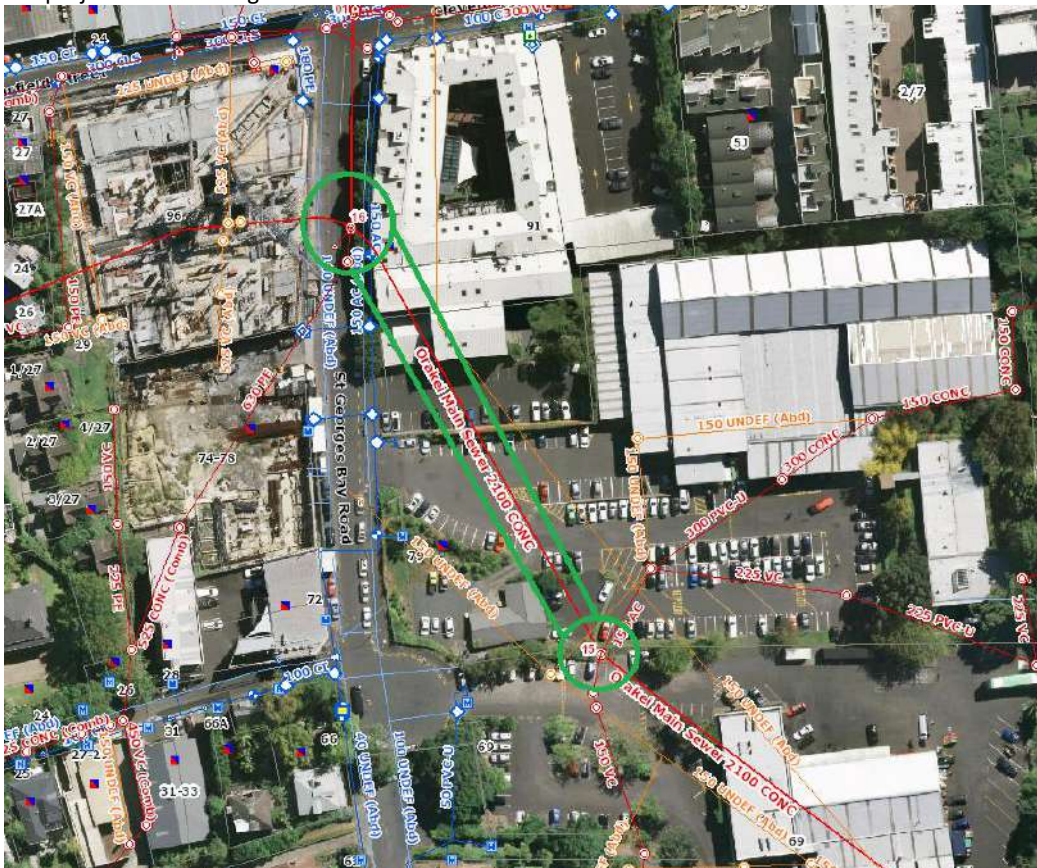
St George's Bay Tomo and Orakei Main Sewer Blockage

At this point almost all debris has been removed from the sewer and a permanent repair solution has been designed. This involves pipe-jacking a series of GRP (glass reinforced pipe) liners into the damaged pipeline to restore full strength and flow capacity to this section of the Ōrākei Main Sewer. Installation of the GRP liner is expected to commence in March 2024 (see below for a picture of the liners).

Waitematā Local Board
March 2024



- The lining of the section from manhole 16 to manhole 15 (the manholes and the section of sewer are marked in green below) starts in March and will be done by early April. Other parts of the project will take longer.



Investigations for future planned works for consenting purposes, will commence over the coming weeks and will be primarily focused in Alberon Reserve. There will be some temporary works, such as the construction access road that are expected to remain in Alberon Reserve for future planned works. However, more information on this will be provided on this in future updates.

The board acknowledges the impact of the works on the amenity of Alberon Reserve. However the extreme urgency of dealing with the issue quickly to avoid a significant collapse of the wastewater

Waitematā Local Board
March 2024

network was front of mind when the sewer failed. A recent visit with a constituent and Watercare has been useful to develop a plan to mitigate the impacts of works and to provide easier access to one of the paths.

The project team are aware of odours from the sinkhole being reported near the site and in Alberon Reserve. Watercare will be installing an odour containment system to surround a manhole along St Georges Bay Road. It includes an odour neutraliser commonly used at other wastewater treatment sites and even refuse stations. They have also installed specialized carbon filters in Alberon Reserve to help eliminate odours from the by-pass pumping.

Report into the sewer failure

There seem to have been several contributing factors to the sewer's collapse including: the condition of the pipe, extreme rainfall events in 2023, and some weakened concrete blocks at the failure location. Watercare is committed to implementing the report's recommendations¹:

- Watercare will be investing in more detailed inspections and profiling reports going forward.
- Work on Watercare's condition inspection strategy and renewals intervention strategy is already underway. These will be ready in July.
- Work to rehabilitate the damaged section of the Ōrakei main sewer is well underway, with pipe relining to start this month.
- Watercare is planning to reline about 1.6km of the sewer in Parnell in the next few years. This \$86.74 million investment will significantly reduce the risk of future sewer collapses in Parnell.

Queen Street Wastewater Diversion: P3 - P4 Service Connector Tunnel

In December, Watercare was aiming to commence work in February to relocate underground pipes and cables ahead of tunnelling at the Mayoral Drive/Queen Street intersection and the Wellesley Street/Queen Street intersection. These works have been deferred with a likely new start date of mid-2024. By postponing these services diversions, we're aiming to reduce disruption to neighbours at this busy time of year. Other works are continuing around Victoria Street and Parnell.

Western and Eastern Isthmus Water Quality Improvement Programme

The repeal of Three Waters legislation has had impacts on Watercare's work programme. The board have announced price rises but the revenue generated will be slower to come in than extra borrowing which means that some projects will be deferred or take longer. The Long Term Plan consultation document proposes proceeding with the Point Erin extension of the Central Interceptor, and water separation work in lower Khyber (as well as other vital work provisioning the North Shore and South Auckland). The Central Interceptor and Point Erin extension will reduce pressure on the Orakei main which will assist with improving water quality in the Eastern as well as

¹ The full report can be found here: chrome-extension://efaidnbmnnnibpcajpcglclefindmkaj/https://wslpwstoreprd.blob.core.windows.net/kenti-co-media-libraries-prod/watercarepublicweb/media/watercare-media-library-2/tomo_orakei/orakei_main_sewer_collapse_report_wsp.pdf

Waitematā Local Board
March 2024

Western Isthmus. The Newmarket Gully Project looks like it will be deferred a couple of years, with construction between 2030 and 2033.

What is the Odour in Freeman's Bay?

Constituents have reported a long-term intermittent odour around the lower areas of Freeman's Bay. It is frustrating as the odour is not always there, depending it seems on how much rain there has been recently washing out the pipes. After long dry periods the smell returns. I have been calling for more information about the issue and how it is to be addressed and advocating for different departments and CCOs to share information about the issues. However, I can report that odours in Picton St are to be addressed in the upcoming footpath renewal. Also planned is to increase the berm area around the trees to improve permeability and create more space for the tree roots off the road corridor.

Environmental Work at the Port

I met with Paul Kennedy to discuss the environmental work with the port and at Wynyard Quarter. We discussed the challenges in finding uses for dredged material as there is so little space to store it, but that it can be used successfully on shoreline projects or as road fill if timings can be aligned. Developing mudcrete for use in reclamation projects and some infrastructure projects might contribute to a more circular economy. They are investigating using the material in the new park Te Ara Tukutuku in the Wynyard Quarter as a land stabiliser.

We also discussed how they have found sponge gardens around rocks in deeper parts of the Waitematā that serve as fish nurseries and are very biodiverse. It may be that dumping mudcrete can provide a platform for other sponge gardens. There is also a small coastal forest in Kelston. They are trying to learn why some areas flourishing and others not so much. Calerpa is a significant threat and spreads like kikuya.

With regard restoration of mussel beds, work is ongoing. Getting a critical mass of mussels to replenish stocks is necessary for success. A huge amount of spat is needed for mussels to find each other and grow numbers. The port is harnessing matauranga Maori and international scientific methods to provide natural or manmade frames to cultivate mussels around the port. Natural materials like supplejack do not last but they are trying hemp rope. They are also finding very little in the way of historic mussel shells in the wider gulf. Stories tell of many layers of mussels in the gulf before man's arrival but it is hard to find evidence of them: were they all dredged or washed away?

We discussed how and where stories be told of the gulf. The Maritime Museum, Kelly Tarlton's, Te Wharekura or Sustainable Coastlines could be good venues for talks about efforts to protect and regenerate the gulf. We will meet again in August to discuss opportunities.

Leaf Fall Franklin Road

There are calls from some residents of Franklin Road and other heritage tree streets to trim the trees to reduce leaf fall and to allow more light into their houses. The combination of rain and sun this summer has been very good for tree growth it seems. Adequate maintenance of catchpits and street sweeping is also required. This has been raised with council staff. Planting under the trees is also proposed. The deciduous hardy plants proposed will suck up more water, look nicer, hold leaves, and discourage parking on the tree roots.

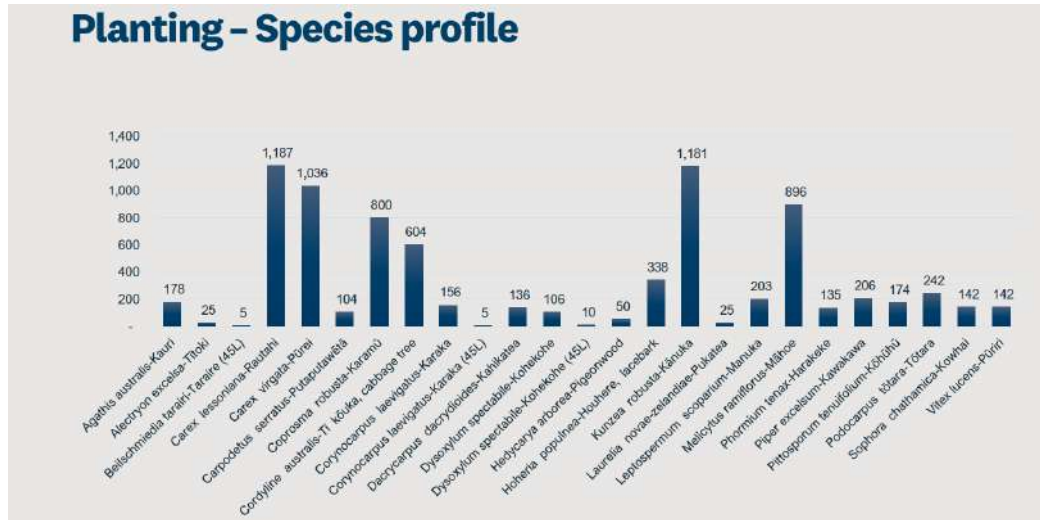
Waitematā Local Board
March 2024

Food Scrap Collection in the City Centre

There is a strong demand from city centre residents that the food scrap scheme is extended to more city centre residents. Staff have been reaching out to building managers in the city centre to do site assessments with more buildings being brought on board. However, the Queen Street corridor remains out of the scheme for now and will be addressed in a future Stage 2. It would be helpful if waste management is front of mind during AT’s Room to Move strategy to manage kerbside activities that begins this year.

Western Springs Forest regeneration

Since the pines were removed and land was left with large quantities of woodchip (this breaks down over time and improves the soil), there have been a good deal of plantings. In 2021, 7428 small grade plants went in and 20 large specimen trees. In 2022, 460 small grade plants and 178 kauri trees. Plants in sheltered areas are growing well, while those in more exposed sites are taking longer to establish themselves.



There continue to be visits to reduce pest plants:

Waitematā Local Board
March 2024

Western Springs Native Bush Restoration Project

Pest plant control

- Several pest plant species readily re-invade the site between control visits
- Including mile-a-minute (*Dipogon lignosus*) and gorse (*Ulex europaeus*).
- The abundance of other pest plant species continues to reduce from repeated control.



While we acknowledge the deep distress caused to some members of the community by the felling of the forest. Progress is being made. There may be some opportunities for volunteers to be more involved in the forest and I am finding out what these might be.



Waitematā Local Board
March 2024



PEOPLE & DIVERSITY

Quality of Life in the City Centre Advocacy from City Centre Residents Group

Noise, air pollution, criminal and antisocial behaviour from indecent exposure and public defecation to late night speeding are impacting on the wellbeing of city residents. The chair, other board members and I are working together and across council and central government to share information from residents and advocate for a suite of responses in the short, medium and long-term. Could public toilets be more accessible and attractive? Should there be a tightening of enforcement of bylaws? Should the police have a physical presence in the city centre? What is being done to provide more mental health support? How is waka Kotahi taking responsibility for rubbish and homelessness in their motorway corridors?

With regard air pollution, progress is being made to install air quality monitors across the city. There are also more noise monitors installed in the downtown area. We would like that the data collected is shared with the local board, council and the public at large.

We are constantly advocating for more public toilets, for AT and CRL to provide well-maintained toilets, and there will be publicly accessible toilets in Beresford Square in addition to behind the turnstile provision of facilities in the stations themselves. People in the know will be able to find the ferry and Commercial Bay toilets as well as those in Ellen Melville Hall and the Central Library and Aotea Centre. However, some people do not use these for whatever reason. An inspirational image from Japan from a member of the CCRG. Tokyo has harnessed top architects to redesign 17 public toilets to add dignity to our most necessary of activities.

Waitematā Local Board
March 2024



(click below for more information)

<https://www.instagram.com/reel/C4B3496uHH0/?fbclid=IwAR2xgl2hf1dLURDL-uEPDIJ05vTS-BshBesVb2IYZcgyLVCZfVZe-j18QfQ>

Waitematā Local Board
March 2024

PLANNING & HERITAGE: Resource Consents

I support Member Matson in this portfolio, which involves fielding resource consent requests for buildings, structures, and tree pruning and removal as they are received by Council, requesting further information, plans and Assessments of Environmental Effects for applications of interest². All consents are shared with planning lead Allan Matson to lead the response.

Landbanking in the City Centre

There have been a number of resource consents proposing to use land in the city centre or in walking distance to it that is zoned for housing or commercial development as temporary carparks. Some sites have been left empty for decades awaiting better market conditions. There is however an ongoing need for housing and when plan change 78 is settled it may be helpful to explore how development of these sites may be accelerated in a way that will lead to good quality housing that are lived in. We note the Minister for Housing Chris Bishop is keen to work with investors domestic and international to provide build to rent accommodation. It is within his power to use the Public Works Act to acquire land for housing and Chair Gen Sage and I have written to him to suggest he consider this option.

There is an aspiration within council to more than double the city centre population. This would boost the local economy and make the city centre a more vibrant and vital place to live with numerous amenities and work opportunities in walking distance. A focus on this in the city centre (and other metropolitan hubs as per the Future Development Strategy) may well be more cost effective, economically productive and positive for social, cultural and environmental wellbeing in the long-term than releasing greenfield sites that are needed for food production, emissions mitigation and supporting biodiversity like restoring native forests and wetlands. However in order to encourage people to live in the city centre, quality of life has to be at the forefront of planning, regulatory and budgeting decision-making.

Emergency Planning meets Urban planning – slips

There has been a number of articles in the media that have pointed out that slips are a tremendous hazard in New Zealand but the planning rules are limited in what building can be restricted. The local board is asking staff for advice on what plan changes may be made to restrict development in areas of natural hazard, including where land prone to coastal erosion.

Supporting Heritage

Regional heritage grants have been allocated to a number of projects to support the ongoing maintenance and enhancement of Waitematā's built heritage.

² Significant applications are referred to the relevant residents' associations for their input which I then relay to planners as part of the Local Board's input. I particularly keep a look out for tree removals, helicopter pad requests, digital billboards facing residential buildings, impact on heritage buildings and place and more than minor breaches of the unitary plan.

The Waitematā Local Board recognises the amenity value of trees and has adopted the Ngahere Urban Forest Strategy. Where it is possible to keep trees we advocate for them. Sometimes trees may be removed for the building of transport and energy infrastructure that locks in lower carbon emissions in the future. Where trees are removed our position is that there should be more trees planted than are lost in the same neighbourhood. Good urban design and spatial planning can make a huge difference to the quality of a neighbourhood. Considering new developments through a climate change lens is also necessary. The council has committed to halving emissions by 2030 which should impact decision-making across all departments.

Waitematā Local Board
March 2024

Application number	Address	Place	Description of project	Grant amount
RHH23/24001	75 Wakefield St Auckland Central	Former Fitzroy Hotel	Propping Fitzroy Hotel walls so they do not collapse and injure by passer and destroy The Fitzroy.	50,000.00

Waitematā Local Board
March 2024

RHH23/24010	St.Stephens Cemetery Judge St Parnell	St. Stephens Chapel Cemetery	To preserve and repair historical gravestones and provide safety to the public who frequent this area.	20,000.00
RHH23/24012	70 Khyber Pass Rd Grafton	St David's Soldiers' Memorial Church - Tower	Conservation and restoration of the Tower.	33,500.00
RHH23/24025	456 Queen St 456-486 Queen Street Auckland Central	456-486 Queen Street, Auckland - Terraced row of shops	Restoration and repair of the shop awnings.	20,000.00
RHH23/24038	65 Jervois Rd Ponsonby	St Stephens Presbyterian Church Ponsonby	Restore the church steeple which was damaged by fire.	35,000.00
RHH23/24056	2 Symonds St Auckland Central	St Andrew's Presbyterian Church, Symonds St	Restoration of the external steps, portico floor and portico masonry. As well as painting.	15,000.00
RHH23/24057	11 New St St Marys Bay	Stella Maris part of St Mary's Chapel and the Stella Maris Building	Remedial work to the tiled roof, roof deck works, torch-on membrane areas of the roof, exterior coating of the building, reinforced concrete repairs, repainting of steel joinery, lead light windows, balcony remedial work, Porch repairs, Barley Twist Column repairs, Exterior timber doors, subfloor vents and mechanical heating.	40,000.00
RHH23/24060	12-32 Customs Street West Auckland Central	Old Customhouse Building	Contribution towards installing a new membrane overlay on roof.	25,000.00
RHH23/24062	9 Parliament St Auckland Central	Middle Courtville Apartments	Concrete spalling works and repairs to the northeastern Corner of the building, and repairs to the Basement areas.	20,000.00
RHH23/24063	11 Parliament St Auckland Central	Comer Courtville Apartments	Concrete spalling repair to interior of buildings apartments	18,000.00

Item 21

Attachment A

Waitematā Local Board
March 2024

Servicing and Loading

I have been talking to residents about the difficulties in servicing buildings, particularly for heritage buildings requiring maintenance with regards plumbing, electricians and moving house. There is a project underway to improve the access to Mills Lane and Exchange Lane due for construction later this year, however, we are pressing for better access for trades throughout the city centre and inner suburbs when there is very limited practicable parking, and some service businesses are reluctant to do jobs in some areas. The Room to Move strategy will be helpful in this space. Some bold steps are needed, even if some refining of the plan comes following roll out. We have requested AT talk to trades, removal companies and so on for their insights, to consider waste management including food scraps, and to focus as much on residents' needs as commercial ones. The picture below reveals the limited options presently available. We will continue to advocate to AT for short term and long term solutions.



New Consents

8 Nixon Street Grey Lynn Auckland 1021
LUC60428979

The construction of a 9 level apartment building and associated earthworks on a vacant Business Mixed Use site. The local board support this development that will offer 65 new homes on a 688m² site. The apartments are of a decent size and expand housing choice in this great area to live in walking distance to Ponsonby, Karangahape and Grey Lynn and close to great PT and multi-modal transport options. The gym and bike storage entrance on the Ground Floor provide some oversight of the street, while the ground floor apartments are set higher than street level to maintain privacy. The texture of the design adds interest at street level. However, there are some inconsistencies within the application. On page 10 of the AEE 54 secure bike parks are offered, while on page 12, 65 are proposed for occupants and 4 extra for guests. We would recommend the greater provision. Also, the building is a fair bit taller than it should be. "The proposed occupiable building height is 10.4m above the 16m maximum occupiable height; and the proposed total building height is 8.4m above the 18m maximum total building height" – the height is commensurate for what is anticipated in Great North Road itself however. The board supports the development of quality apartments and the provision of more homes, and do not necessarily have a problem with the extra height but the board relies on the planner to ensure the impacts on surrounding properties (and their development potential over time) versus a compliant building is fairly assessed and to push back if the effects are more than minor. We also wonder whether the studio apartments will be too dark, being shielded at the North and West by very high buildings, and insufficient outlook space. We recommend the wellbeing of future residents be considered here. We do note however there is some space in the lobby and the upper levels to enjoy better sunlight. While the building may not be particularly at risk of flooding, it may still be prudent for there to be a detention tank to collect water off the roof to

Waitematā Local Board
March 2024

reduce impacts on the stormwater network in heavy rain events. This might also be used as grey water (if the developer would like to move in a more sustainable direction).



22-32 Queen Street Auckland Central Auckland 1010
LUC60428897

Internal and external additions and alterations to ground-level retail unit within the Queen Street Valley Precinct. This is for the Swarovski shop. We have no problem with proposal, the LED screen is set back from the window and does not dominate the whole front glass leaving room for the display of goods. The plate window enables passers by to look into the shop and vice versa providing connection to the street and passive surveillance.

35 Seafield View Road Grafton Auckland 1023
LUC60428630

Alterations to the rear of a dwelling, including demolition of an existing chimney, in a single house residential zoned site with a Special Character Area overlay. The proposed alterations seem unlikely to change the amenity of the street or impact the special character qualities of the area.

141-177 Halsey Street Auckland Central Auckland 1010
LUC60428610

Change of use of Karanga Kiosk building and associated Signs Bylaw exemption. This application seeks to authorise the use of the Karanga Kiosk as an office for the Viaduct and Silo Marina team. The gross floor area is understood to be approximately 67.5m². The kiosk will partially retain its information facility function and there is an area for the public to seek public information, report incidents that need attention in the nearby area and so on. At present, the number of staff in the office is expected to be four, with two hot desks. The permanent number of staff may increase to six if the CCTV and bridge operators are to be relocated to the kiosk. No car parking or loading activities would occur in the plaza. To undertake external building alterations in the form of decal/window sign over the glazed area. While the board supports a partial change of use, we are concerned that by covering the plate window entirely in decal, and without sufficiently clear signage to communicate to the public that this is a place where they can report incidents or get information that the public will not understand they can. This will significantly reduce the amenity of an area that is trying to manage large numbers of tourists (many new arrivals) and anti-social behaviour. We

Waitematā Local Board
March 2024

recommend part of the area being plate glass with appropriate signage including the word “WYNYARD INFORMATION” or suchlike.

6 Meola Road Westmere Auckland 1022
Construct seven dwellings and undertake freehold subdivision.
DIS60428435
LUC60428433
SUB60428434

The board is supportive of more housing in the area but are disappointed that the developers are not proposing family housing of three bedrooms as the site is very well situated for schools and recreation. It also seems a shame to remove play space when a climbing tree in the shared space might provide amenity and quieter play opportunities. We recommend the designers are mindful of what is likely to be a busy cycleway right outside the door when planning the crossing and ensuring all sightlines are good. We are pleased to see the lower fences proposed at the front which will help in this regard.

Commercial 4A/ 27 Union Street Auckland Central Auckland 1010
LUC60428551

The conversion of a commercial unit into a dwelling. The local board does not support the proposal which is not designed suitably for residential accommodation. Tinted glass windows protect the privacy of residents but in doing so reduces the oversight and connection with those using Sugartree Lane. The proposal is in conflict with the initial vision existing residents have bought into, which was a vibrant mixed-use development with ground floor shops, cafes and amenities. We would recommend limited notification to residents of the whole Sugartree development. It would be great if the company could consider a useful community purpose for this space.



55 Albert Street Auckland Central Auckland
LUC60428369

Additions and Alterations to 55 existing Special Character Building at Albert Street to allow the inclusion of one residential apartment with 1 carpark utilising a car turntable system, as described. The local board is generally supportive of the proposal as long as the veranda proposed for the west side facing St. Patricks Square has a design that reflects the required heritage values within the area. The parking solution is a good one to enable servicing and loading for the restaurant and apartment above.

...
LUC60428286, DIS60428287 at 152 Fanshawe Street, Auckland Central

Waitematā Local Board
March 2024

It is proposed to remove five cabbage trees to improve stormwater utilities. The council arborist recommends that to mitigate the loss of the five cabbage trees requiring resource consent for their removal, ten 45 litre grade trees are planted within the local area. To mitigate the remaining three trees that require Tree Owner Approval, an additional six 45-Litre grade trees should be planted. The species and location of the sixteen trees will need to be confirmed by the council's urban forest specialist prior to planting. However, at least eight of the trees will require replanting in the site where The Tree Consultancy Company. 2/08/2023 108 – 156 Fanshawe Street, Auckland Central Page tree removal is occurring, and these species are recommended to comprise karaka and tairere. Subject to engineering approval, a structural soil should be used to backfill the area to increase soil volume for the new tree planting.

[Follow up on Consents](#)

65 Argyle Street Herne Bay
LUC60426382

Building a cantilevered deck on ground subject to coastal erosion. This application was granted. I am still concerned and want to know if the deck fails and injures someone below, is there any risk the council will be liable, or will it be the private property owner? Secondly, I see that coastal erosion is not currently a hazard on our hazard maps and yet slips probably caused the most deaths and serious injuries in the flooding last year. I have asked staff if it is proposed to add coastal erosion to the hazard maps? If they are, will this new information be added to the LIMs? And are owners informed if LIMs change?

[Of ongoing concern](#)

137-147 Quay Street, Auckland Central 1010
CST60403885

Coastal permit to operate a 780-bay parking facility on Princes Wharf at 137-147 Quay Street in Auckland Central, Auckland (the site) with approximately 27% of the bays available for short term non-accessory parking and the remainder 73% of the bays leased to local businesses or apartment owners/occupants. Local residents and the board are concerned about this. The application is on hold subject to more information that needs to be provided.

38 Rawene Avenue Westmere Auckland 1022
LUC60389929

Use of the site for helicopter take-off and landing. The board recommended full public notification and advocated for private recreational helicopter movements be prohibited in the AUP. The consent is pending more information on wildlife.

[Meetings / events attended](#)

1 Feb	Coffee with Paul Kennedy to discuss the port
2 February	Co-created Matt Liggins "City of Dreams" in the library (pic below) Walk in Western Springs to find out more about its ancient wetlands (below)

Waitematā Local Board
March 2024



- 9 February Meeting with Herne Bay Residents Association
- 12 February Meeting with Play Leadership Group
- 13 February Arts discussion with Q – financing buildings and the arts
- 14 February Women’s Refuge Opening
Franklin Road Lights Meeting with Residents and Compliance team
- 15 February Ponsonby Road Business Association Committee Meeting
Kainga Ora Information Event, Cox’s Bay
Auckland Philharmonic
- 16 February Opening of Ockham’s Glasshouse (pic below with Pippa Coom, and then a surprise meeting with Miriam Margolyes at the Women’s Bookshop!)



- 17 February Joined in Latino Festival in Aotea square
Attended Ponsonby Pride Parade



- 18 February Joined the wedding at Lemington Reserve (pic below with Alastair)
Joined in Big Gay Out at Coyle Park (pic below, with Clr Kerrin Leoni)

Waitematā Local Board
March 2024



21 February Meola Road walkover project (pic below)
Walked Weona Westmere to see Maintenance needs

- 22 February City Centre Community Network Hui
- 23 February Met with Building Manager to Discuss Guardian Building service needs
Twenty Twenty at Eden Park
- 24 February Sustainable Gardens Trail in Eastern Isthmus (pictures below)
- 25 February Attended Lunar Celebrations at Aotea Square
- 26 February Meeting with Grey Lynn Business Association
Visit to Watercare’s Central Interceptor site in Mangere (Picture below)



- Auckland Domain Committee
- 28 February Evening with the Auckland Bowling Club
- 29 February Rise and Shine Coffee to celebrate the Aotearoa Bike Challenge
Efeso Collins’s Funeral
Good Citizen’s Award

Waitematā Local Board
March 2024



M

Conferences / member development
n/a

Disclosures

I am a member of Women in Urbanism and on the PTA committee of Richmond Road School. My husband is director of dog walking company Fetch. Anyone living or working in Waitematā is welcome to get in touch with me on Facebook or by email:
alexandra.bonham@aucklandcouncil.govt.nz.

Recommendation

That this report be received.

Richard Northey, Waitematā Local Board Member, Report to the 19 March 2024 Local Board Meeting, covering the period 1 February to 8 March 2024

My Waitematā Local Board official roles are:

- Lead Portfolio Holder for Community Participation with Services and Facilities.
- Waitematā Local Board representative on the Ponsonby Community Centre Board
- Waitematā Board liaison person with the Auckland Central CAB and Ponsonby/Grey Lynn CAB.
- Alternate representative on the Board of the Karangahape Road Business Association.
- Liaison representative to the Auckland City Centre Residents' Group
- Lead liaison person with the CRL Maungawhau (Mount Eden) Station Community Liaison Group
- Alternate liaison person with the Te Waihorotiu (Aotea) Station and with the Waitematā (Britomart) Station and Karanga-a-Hape Station Community Liaison Groups
- Representative of the Central Local Boards on the Council's Joint Governance Working Party
- Originally Waitematā Local Board representative on Local Government New Zealand National Council, and now a Working Party Member on the Local Boards' relationship with LGNZ
- Waitematā Local Board representative on the Project Steering Group for the Leys Institute Restoration and Seismic Strengthening Project

Major Issues:

The Council's next ten-year strategic plan, called the Long-Term Plan, and proposed Budget for next year, involved many weekly briefings for Councillors and for Local Board members across the region on the costly and challenging issues involved. This has now gone out for public feedback and submissions from 28 February until 28 March, which should be accessed on the Council's website. People need to delve deeply into proposals in the Central and Do Less options in the Plan being proposed which include major service reductions and also \$300 million of asset sales of the remaining airport shares and of yet to be identified community centres and swimming pools, and to give their views in submissions. Such submissions were very important and influential in changing the proposals for last year's budget and most Councillors this year are very open to changing things in response to public submissions- so it is very much worth making them.

It appears that any significant “wasteful” spending has probably already been cut out by rigorous examination in the last three years. Auckland Council income from rates and other sources may well best be increased next year by near to, or at, the 14 % level proposed in the misnamed “Do More” Option. As with the other Councils throughout the country, this sort of double figure increase in the level of resourcing appears to be needed just to maintain our valued services and to respond adequately to our clearly apparent physical and social infrastructure needs and challenges, including those from weather events. The collapsed tomo in St Georges Bay Road may well have been just the latest compelling example of the need to ramp up plans to respond to the need to upgrade our pipes and water, transport and other infrastructure.

The Long Term Plan proposals to lease out our port operation for at least 35 years. This would deprive the people of Auckland of effective control over a major economic, employment, transport, urban design and environmental asset that seems to need ultimate accountability to Aucklanders. Instead, we may want to be able to change aspects of the port, possibly even moving it to another location rather than Downtown Auckland, as part of making the central and eastern part of our waterfront more open and responsive to Auckland’s changing needs. Otherwise, most of these decisions ultimately will be made by the company making the application to lease the port, which is largely owned by the Dubai Royal family.

There may well be legitimate concerns about proposals to further delay road and footpath upgrades, cycleway and pedestrian crossing projects- which have been overwhelmingly endorsed through public consultation. Another issue is whether to pause the legislatively required seismic strengthening and upgrade of valued Council buildings, particularly the Leys Institute buildings. Alternative transport related revenue sources from parking fines, together with bed taxes, value uplift levies, time of use charges on major congested roads and broader levies on developers, and an appropriate share of GST are needed fairly to make Council less reliant on ratepayers as a source of revenue.

In response to the more severe weather events, which we are almost certain to continue to face, it is intended to daylight some streams and increase our Council infrastructure spending and rates take in order to disaster proof both our physical and our community infrastructure. The programme, called Making Room for Water- which will take floodwater away from housing - is progressing, as is the Central Interceptor project, the Herne Bay Wastewater Tunnel project -which the Board resolved after a hearing will regrettably require temporary use of part of the Salisbury Reserve for the spoil removed for it - and cleaning up the watercourses flowing into Hobson Bay, Cox’s Bay and the Meola Reserve area. Under the so-called “Central” option being consulted on, all this would take at least ten years, but under the so-called “Do More” option it could be done in just six years. It is probably necessary to put more effort, planning and resources into both climate change mitigation and adaptation, not less, if these weather events are not to get more devastating and frequent.

We had many workshops on our Board's Local Board Plan for the next three years. Climate change mitigation, water quality, flood protection, pest control, extending our tree cover, community safety, crime prevention, arts activities, heritage protection, local events, community services, community grants, programmes in the community and at our libraries, parks and community centres, better and more appropriate provision, particularly for disabled people and for youth, and maintaining business viability and employment in the Waitematā area, are among our agreed priorities in our Board Plan. In response to public submissions, I gained a commitment from the Board to monitor the Council Group's operational performance in street cleaning and footpath maintenance. We have considered and approved our proposed Work Programme, a draft Board Budget and at our November 30 meeting we approved a consultation document that we are consulting the public on until the 28th of this month as part of the Council's Long Term Plan consultation.

Our February Board meeting also agreed to proceed, from this financial year, with the detailed community consulted Civic Space elements of the long planned and consulted on public space development of 254 Ponsonby Road, for which resource consent is proceeding. We also formally approved the seismic strengthening, restoration and updating of the Leys Institute library and community spaces, starting this financial year with consideration and approval of the final design. Allan Matson and I are to represent the Board on the Project Steering Group to progress the Leys Institute Project We amended the Board Plan to make it clear that any future ideas and options for the best means of continued provision of a good quality library and of a valued community centre in Grey Lynn will be thoroughly consulted on. We are favourably considering passing over the running of the Freemans Bay Hall to a committee of elected community representatives that would co-ordinate programmes and activities between the Ponsonby Community Centre (which is already community run) and the Freemans Bay Hall.

The Joint Governance Working Party, that I represent the Isthmus Local Boards on, is working with staff to develop and recommend between options for advancing Equity of Funding between Local Boards. Local Board funding has so far been based on that provided by the legacy former Councils, with those Boards with less facilities, like Manurewa, have been receiving less funding than their population and level of deprivation warranted. The Mayor has recommended, and the Joint Working Party has agreed to recommend, that this apparent unfairness should be largely corrected over as few as three years. This would require a reduction in funding for some Boards. Current calculations anticipate a likely reduction of about 11% for Waitematā. This is because we currently fund and maintain four major swimming pools, the Central Library, and other facilities that are used regionally or sub regionally rather than principally by locals. Further careful work will be needed to ensure that in advancing equity of funding between Boards a formula is found for adding fair regionally derived funding for such regional facilities so that our Board area and people are not disadvantaged unfairly, and we are not forced to close or reduce the operation of any of our pools and other important facilities.

At our December, February and March Joint Governance meetings we considered a Council Representation and a Local Board Reorganisation Plan. The possibility of putting up a proposal to introduce a Māori Ward or Wards has already been rejected by the Governing Body. In messages to us the Mayor has sought a significant reduction in the number of Local Boards to less than 15, through a Reorganisation Plan. The implications of this need to be carefully considered as it would reduce the proportion of elected members to population. This is an issue as the ratio of elected members to the population in Auckland is already lower than that in nearly all other New Zealand Councils and is at a lower ratio to that applying in prosperous democratic overseas countries. Many people already tell us their elected representatives are too remote from them. We have a choice between a business-oriented model with small board of governor type roles, or a representative democracy model with slower decision making but more diversity in its elected member composition and effective consultation with their constituents.

The Working Party recommended to Council, and the Governing Body agreed to, further consideration of two options: a modified status quo- with the possibility of minor boundary changes; or, alternatively, 15 Boards resulting from the merger of the two current Boards in those wards where they occur in the same Council Ward, apart from the two island boards in the Waitematā Ward area remaining, At the 8 March meeting of the Working Party we expressed concern that staff are still researching a possible additional option that, among other things, would reduce the number of Isthmus Local Boards to just three. It appears that the Mayor, some iwi, some businesses and some staff remain keen on such a drastic reduction. We also learnt at this meeting that staff want to consult on Council Ward boundaries on the basis of returning to the pre-2019 boundaries, when the Ward included Parnell, Newmarket, Grafton and Eden Terrace. However, the Parnell and Newmarket Business Associations have communicated they want to stay in the Orakei Ward. So, we have four options: keeping the current boundaries of the Board and Ward; changing the Ward boundaries to the corresponding existing Board boundaries; changing the Ward boundaries to restore Grafton and Eden Terrace but not Parnell and Newmarket; or changing the Board boundaries instead, moving at least those two suburbs from our Board to the Orakei Board. Once draft proposals have been developed and then approved by the Governing Body on 30 May, Council will consult widely from 12 June on what Council and Local Board structure and composition to adopt for the 2025 election, and in the meantime is checking on them with Council's People's Panel, key stakeholders, its demographic advisory panels, and all local Boards at this March Meeting.

The Joint Governance Working Party is also considering proposals to give more powers to local boards. In particular, I am advocating that Local Boards have decision-making powers over most purely local transport projects in future.

In this period there have been some great local events. The Waitematā Good Citizens Awards evening was very inspiring, celebrating the great work by volunteers in our area.



Item 21

Attachment B

Item 21

Attachment B



I spoke for the Waitematā Board at the opening of an important exhibition: “variation and Autonomy: The Prints of Contemporary Japanese Printers (a copy of my speech and some photos, with Shona and Tait from the Auckland Arts festival is attached as

attachment C to the agenda report). Q Theatre hosted an excellent and informative meeting with the new minister for the Arts, Paul Goldsmith.



The Auckland Arts Festival has begun, and I have attended five of its events to date and look forward to going to a dozen more. Pride Month has taken place with many positive events, including the Pride Parade in Ponsonby Road, the Pride March in Central Auckland and the Big Gay Out in Coyle Park. Interesting buildings were opened, including the new Education and Social Work Building in Symonds Street and Ockham's "The Greenhouse" in Williamson Avenue.

I have attended meetings to listen carefully to, and advise, the Karangahape Road Business Association about how best for them to respond to actual and other proposed changes to their bus lanes, most of which they have succeeded in having postponed, until Auckland Transport has completed monitoring and measuring their potential impacts until the end of March. The Board continues to resolve we don't want Karangahape Road to operate principally as a transit corridor but instead as a town centre and residential area. Such advice and advocacy also apply to my responses to the Central City Residents' Group's concerns about issues like security and safety in Myers Park and around Te Komititanga; recommended changes to Emily Place Reserve; reducing air pollution from cruise ships; reductions in numbers of public rubbish bins; night construction project noise; and continuing anti-social behaviour.

Memories and history have been important to me this month. A reunion of my Auckland Grammar School class of 1958-62 was rewarding. I have also been contributing to books on the histories of bodies that I have chaired; the Steering Group that founded Community Housing Aotearoa and the history of the University of Auckland Alumni Association and Society.

Community Participation with Services and Facilities Portfolio Activities

- 8 Feb Participated in a community weeding evening at the Daldy Street Community Gardens. Compiled and sent a copy of my speech at the winding up meeting of the University of Auckland Society to the historian writing its history.
- 9 Feb Responded to information about the WC Daldy heritage tugboat. Attended the opening night of Auckland Theatre Company's new play: "Hyperspace", courtesy of the ATC.
- 10 Feb Attended Lunar New Year activities by and at the Auckland Art Gallery. Also went through their great exhibitions of the Robertsons' Gift art works and the Guo Pei exhibition. I made and cooked a doughnut over a fire at Out and About's Nature's play in Myers Park and visited the Queer and Wares Market at Toi Tu and Eke Panuku's Silo Park Fun and Games.
- 11 Feb Attended Q Theatre's meeting with the Minister for the Arts Paul Goldsmith.
- 12 Feb Robyn's and my Ruby Wedding Anniversary. Prepared and conducted an orientation session for new Board members of the Auckland Community Housing Trust then participated in the subsequent Board meeting.
- 14 Feb A new exercise programme for me at the YMCA developed and begun daily. Formal opening of the new Education and Social Work building of the University of Auckland.

- 16 Feb Formal opening of Ockham’s new apartments, The Greenhouse, in Williamson Avenue.
- 17 Feb Pride Parade. Parnell Market.
- 18 and 19 Feb Reunion of my 1958-1962 Auckland Grammar School class, in Taupo.
- 21 Feb Multiple Sclerosis Society Meeting. Helen Clark Foundation webinar on “A Shared Future: Working with Communities facing Climate Change.”
- 22 Feb Central City Community Network Meeting.
- 24 Feb Sorted seeds for planting in the park at the end of the Wynyard Quarter (Photos attached). Opening event of the Arts Festival series of films by Marcus Coates “The Directors” of five directors’ experience of psychosis, at Toi Ora, courtesy of them and of Te Tuhi and Yellow Brick Road.



- 26 Feb Meeting with Tenants’ Protection Association. Responded to a request for information on seeking speed bumps for Harcourt Street.
- 28 Feb Confirmed that Alex and I would make a presentation on LTP consultation for next meeting, and advised on dates for future meetings of the Central City Community Network- which are to move forward to the third Thursday of the month from March to May.
- 29 Feb Chaired the meeting that resolved to wind up the University of Auckland Society. Went to the Auckland Philharmonia concert “In the Italian Style”.
- 3 and 6 March Provided requested information to Community Housing Aotearoa about the Steering Group of 2003-4 which I chaired, which founded Community Housing Aotearoa, and arranged a meeting with the person writing the history.

- 6 March Met with the person writing the history of the University of Auckland Society.
- 7 March Opening of the Auckland Arts Festival. Attended the opening night of the play: “The Liar, the Thief and the Coward”, courtesy of the Auckland Theatre Company.
- 8 March Attended the Auckland Arts Festival play “Not King Lear” performed by homeless and marginalised local people.

Board Representative on Central Rail Link Community Liaison Groups

No meetings this month.

Business Association Meetings and Issues

- 1 Feb First Thursday in Karangahape Road Business District.
- 13 Feb Circulated to Waitematā Board staff Jamey Holloway’s proposal about CRL targeted hardship fund eligibility.
- 28 Feb Attended meeting between the Karangahape Road Business Association and Auckland Transport staff re bus lanes proposals for Karangahape Road and subsequently reported on this to the Board Members at a workshop.

Representative on Ponsonby Community Centre Board

- 26 Feb Ponsonby Community Centre Committee Meeting.

Joint Governance Working Party

- 1 Feb I circulated my comments and questions on the JGWP agenda item on Empowering Local Boards to all isthmus local board members.
- 2 Feb Joint Governance Working Party meeting. I then circulated the subsequent minutes of the meeting to all isthmus local board members.
- 7 Feb Circulated to all Board Members Chair Julie Fairey’s summary about current Joint Governance Working Party issues as at the conclusion of the previous Friday’s meeting and responded to Scott Milne about cost effectiveness issues.
- 9 Feb Responded to some concerns re possible local board amalgamation raised by Alex Bonham and Ella Kumar.
- 10 Feb Circulated John Nash’s notes of the 2 February meeting of the JGWP to all Board members on the Auckland isthmus.
- 10, 11, and 13 Feb informed all isthmus Board Members, then Margi Watson and Sarah Trotman about the opportunity for stakeholders they recommended and themselves to attend a meeting on possible Local Board reorganisation.
- 6 March Read the Joint Governance Working group agenda for 8 March and circulated my initial thoughts to all Isthmus Board members, particularly about the proposal to revert to the pre-2019 Councillor Ward boundaries in the Auckland isthmus.

- 7 March I requested information about the likely disruption and costs of any likely changes in Boards and Board boundaries through a reorganisation proposal.
- 8 March Joint Governance Working Party meeting This dealt with a possible 3rd proposal for a more drastic reorganisation and reduction in local boards; whether the basis for consideration of, and consultation on, Council Ward Boundaries should be on those applying prior to 2019; and progress on implementing the Governance Review in terms of additional roles for local boards.

City Centre Residents Group and My Other Portfolios

- 9 Feb Sought information and advice about some issues raised by Adam Parkinson about managing Te Komititanga Square appropriately.
- 3 March Provided information requested by Adam Parkinson that Greg Moyle held the liquor licensing portfolio.
- 4 March Attended City Centre Residents Group meeting.

Waitematā Local Board General Activities

- 7 Feb Waitematā Local Board Workshop. Responded to Auckland Transport recommending that the Grey Lynn Business Association be included in the list of stakeholders consulted on advancing low-cost active transport projects in the inner western suburbs.
- 10 Feb Myers Park Nature play by Out and About, part funded by the Board. I made a doughnut and joined children in roasting it over embers- delicious.
- 13 Feb Waitematā Local Board Workshop.
- 15 and 16 Feb. Auckland Philharmonia concert of music by Tchaikovsky and Shostakovich courtesy of the Auckland Philharmonia. Responded to Martin Leach re the Good Citizen Awards. Suggested amended resolutions for the February Waitematā Board meeting.
- 20 Feb Waitematā Local Board Business Meeting. Make an inquiry and receive a response regarding the time period our elected members' declarations of interest should cover.
- 22 Feb Completed and sent in my annual declaration of interest.
- 26 Feb Commented on the use of our Perceptions of Safety Budget. Advised on signage regulations for the Grey Lynn Business Association.
- 27 Feb Waitematā Local Board meeting considering the Hearings Panel Report on Landowner Approval for Salisbury Reserve for a Watercare project. Waitematā Local Board Workshop.
- 28 Feb After seeking appropriate advice and information, spoke on behalf of the Waitematā Local Board at the opening of a major Japanese painters and printmakers exhibition at Studio One Toi Tu (My speech and two photos are attached to this report).
- 29 Feb Participated in the Waitematā Local Board's Good Citizens Award Event, presenting their awards in the community organisations section (Photos attached).

As usual it was an inspiring event, and well run. I agreed formally to John Cheah's request to join the Project Steering Group for the Leys Institute Seismic Strengthening and Restoration Project.

- 5 March Waitematā Local Board Workshop. Respond to an LGOIMA request for all communications on the Waitematā
- Good Citizens Awards.
- 5 and 6 March I circulated a memo on likely levels of cuts to the Waitematā Local Board budget under current proposals for equitable local board funding.

Auckland Council and National Activities

- 1 Feb Problem Gambling Foundation of NZ Group executive meeting.
- 12 Feb Chaired a Peace and Disarmament Collective Aotearoa Meeting.
- 14 Feb Problem Gambling Foundation of NZ Group Board Workshop.
- 16 Feb Briefing for Board members on the Long Term Plan consultation.
- 28 Feb Community Networks Aotearoa Special General Meeting
- 29 Feb Problem Gambling Foundation Board meeting.

Speech at Opening of Japanese Art Exhibition at Studio One Tu Toi on 28 February 2024

By Waitemata Local Board Member Richard Northey

Konnichiwa, Warm Pacific Greetings, Tena Kotou Katoa.

Could I first acknowledge the Consul-General of Japan, Mr. Matsui; Mr. Gingka of the Japan Association; Shona and Tait from the Auckland Arts Festival; Siobhan Connelly, the Manager and the staff of Studio One Tu Toi; and Anne Bradley, her predecessor, and now Arts Manager at the Auckland Council.

It is wonderful that Studio One Tu Toi is able to host this important international touring exhibition: Variation and Autonomy: The Prints of Contemporary Japanese Painters. These represent the works of ten innovative leading Japanese artists and printmakers who were active in the 1970s and 1980s.

At the Auckland Council and the Waitemata Local Board, we are here further nurturing and developing our partnership with the Consulate-General of Japan and the Japan Foundation.

My wife Robyn and I really appreciated, learned from and enjoyed your earlier Yokai Parade exhibition at the Central Library, as did a great many Aucklanders. Following the resounding success of that exhibition this wonderful new exhibition further strengthens our bonds.

This exhibition represents a unique and exciting opportunity and will undoubtedly captivate many in our community. The print making elements of this show will be of particular interests to the artists who use this space here.

We welcome this opportunity to deepen our understanding and appreciation of Japanese culture and to delve into the intricacies of Japanese artistry and heritage, while also expanding our city's rich cultural landscape.

This exhibition has been incorporated into the Auckland Arts Festival programming, and we extend our thanks to the Arts Festival, and Shona and Tait here for their support.

On behalf of the Auckland Council and of the Waitemata Local Board I extend my deep thanks to the Consulate-General of Japan, Mr. Matsui and the Japan Foundation for co-hosting this exhibition here at Studio One Tu Toi.