



**ABOUT  
FACE**



Dasha Bazanova  
Jeff Bliumis  
Alexandra Rutsch Brock  
Deborah Brown  
Pam Butler  
Susanna Coffey  
Kyle Coniglio  
Donna Festa  
Ryan Michael Ford  
Barbara Friedman  
Kyle Hackett  
Lavaughan Jenkins  
Catherine Kehoe  
Aubrey Levinthal  
Elise Siegel

## ABOUT FACE

Curated by  
Patricia Spergel & Shazzi Thomas

June 18 - July 13, 2019

**THE PAINTING CENTER**

547 West 27th Street, Suite 500, New York, NY 10001  
Tues-Sat, 11-6 pm, 212-343-1060, [www.thepaintingcenter.org](http://www.thepaintingcenter.org)

## About Face: Portraits in Paint and Clay

In this age of social media overload, when written interactions using emojis often substitute for actual conversations, it is a refreshing change of pace to stand in front of a work of art that insists upon engagement. Faces are a primal subject matter and traditional portrait painting has been around for hundreds, if not thousands, of years. Yet making a portrait, be it observational or abstracted, of a human or an animal, with paint, pigment, clay or wax, can seem like a revolutionary act in 2019.

The phrase “About Face” has several meanings—it can straightforwardly refer to something about the face; or it can be a command given to soldiers to tell them to physically turn around and face the other way. Idiomatically it can mean a complete, sudden change of direction, position, opinion, principle or attitude. While this exhibition is intended to literally be “about faces,” it’s hard not to read any work with the subtext of the charged political environment.

Shazzi Thomas and I selected artists for this exhibition who demonstrate a wide range of approaches to portraiture. Barbara Friedman often paints her untraditional subjects from small scale toys and figurines, placing them in imaginary settings, while Ryan Michael Ford’s humorous yet eerie portraits of dogs and other creatures veer towards surrealism. Jeff Bliumis’ figurative scenes are directly observed slices of daily life, while Elise Siegel’s ceramic busts convey a potent mix of empathy and pathos though they are not meant to be portraits of anyone specific. When one experiences a painting or a sculpture “face to face,” as opposed to seeing it on a screen, subtleties emerge which can make the reading of emotions clearer, in a similar way that speaking to someone in person, rather than on the phone, allows the conversation to include facial cues, tilts of the head and hand gestures. It is our hope that focused interaction with these works will provide the viewer with some pleasure, humor and perhaps even inspiration.

Patricia Spergel, 2019



**Jeff Bliumis**  
*Anonymous, 2017*  
Oil on linen  
29 x 24 inches

**Dasha Bazanova**  
*Andy Warhol #5*, 2019  
Glazed ceramic  
8 x 3 x 4 inches



**Alexandra Rutsch Brock**

*Ecstasy #8, 2017*

Watercolor and gouache on paper

10 x 9 inches



**Deborah Brown**

*Regency Portrait*, 2015

Oil on canvas

24 x 20 inches

Courtesy Burning in Water, New York, NY



**Pam Butler**

*Untitled (Contestant A-5), 2006*

Oil on canvas

7 x 5 inches



**Susanna Coffey**

*Kali*, 2015

Acrylic spray paint on panel

15 x 12 inches

Courtesy Steven Harvey Fine Art Projects, New York, NY





**Kyle Coniglio**  
*Indica*, 2018  
Oil on linen  
14 x 18 inches



**Donna Festa**  
*Man with Red Nose*, 2015  
Oil paint on terracotta  
3 x 2.5 x 2.5 inches



**Ryan Michael Ford**

*Sofi*, 2016

Oil on canvas

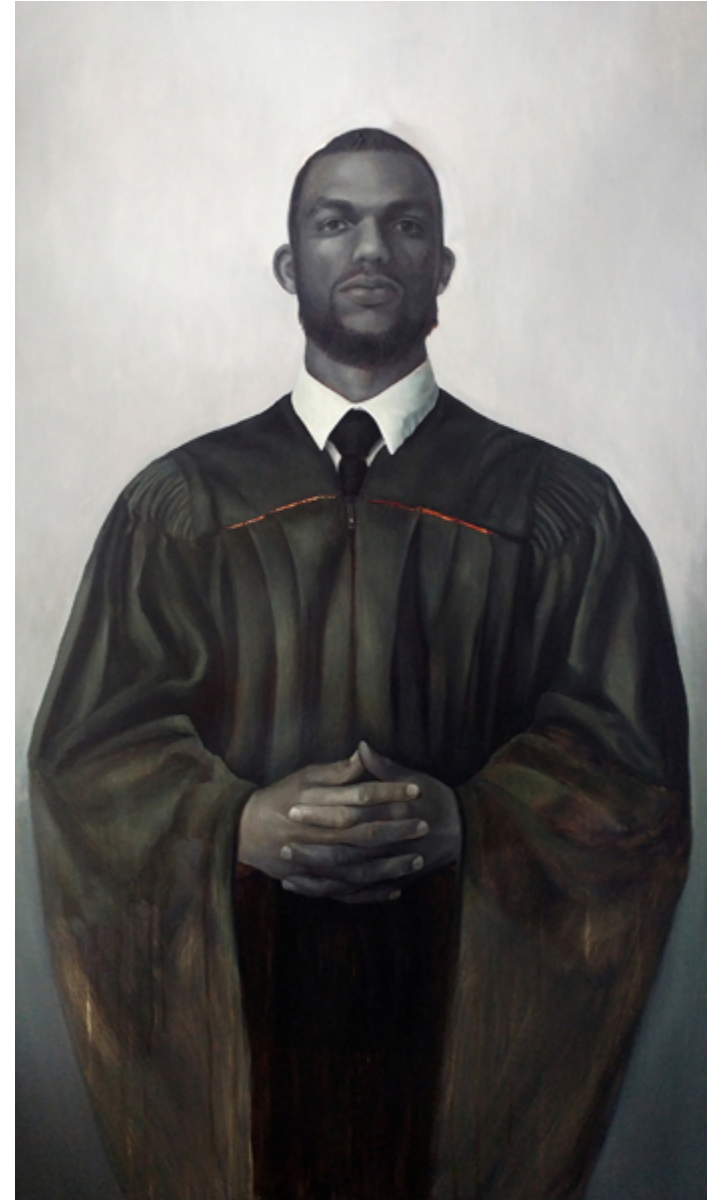
16 x 20 inches



**Barbara Friedman**  
*Face-Off*, 2018  
Oil on linen  
24 x 30 inches



**Kyle Hackett**  
*After Judgement*, 2018  
Oil on panel  
48 x 28 inches



**Lavaughan Jenkins**

*(Solo) duchess in neon*, 2019

Oil paint with wire and plaster structure

11 x 6 x 5 inches



**Catherine Kehoe**  
*Self Portrait in Red*, 2018  
Acrylic gouache on panel  
5 x 5 inches



**Aubrey Levinthal**

*Tourist*, 2018

Oil on panel

12 x 12 inches

Courtesy Nancy Margolis Gallery, New York, NY





**Elise Siegel**

*Cobalt and White Portrait Bust with Pale Polka Dots, 2015*

Ceramic, glaze

21 x 10 x 8 inches

Photo credit: Alan Wiener



This exhibition and catalogue would not have been possible without the generous support of the Caroline M. Lowndes Foundation.

Design: Shazzi Thomas  
Photography on Cover: Patricia Spergel

