

A grid of 48 textured paint swatches arranged in 8 rows and 6 columns. The colors transition from warm tones (browns, oranges, reds) on the left to cool tones (greens, blues, purples) on the right. Each swatch has a distinct, slightly irregular texture.

VARIATIONS IN PAINT

VARIATIONS IN PAINT

JANUARY 6, 2015 - JANUARY 31, 2015

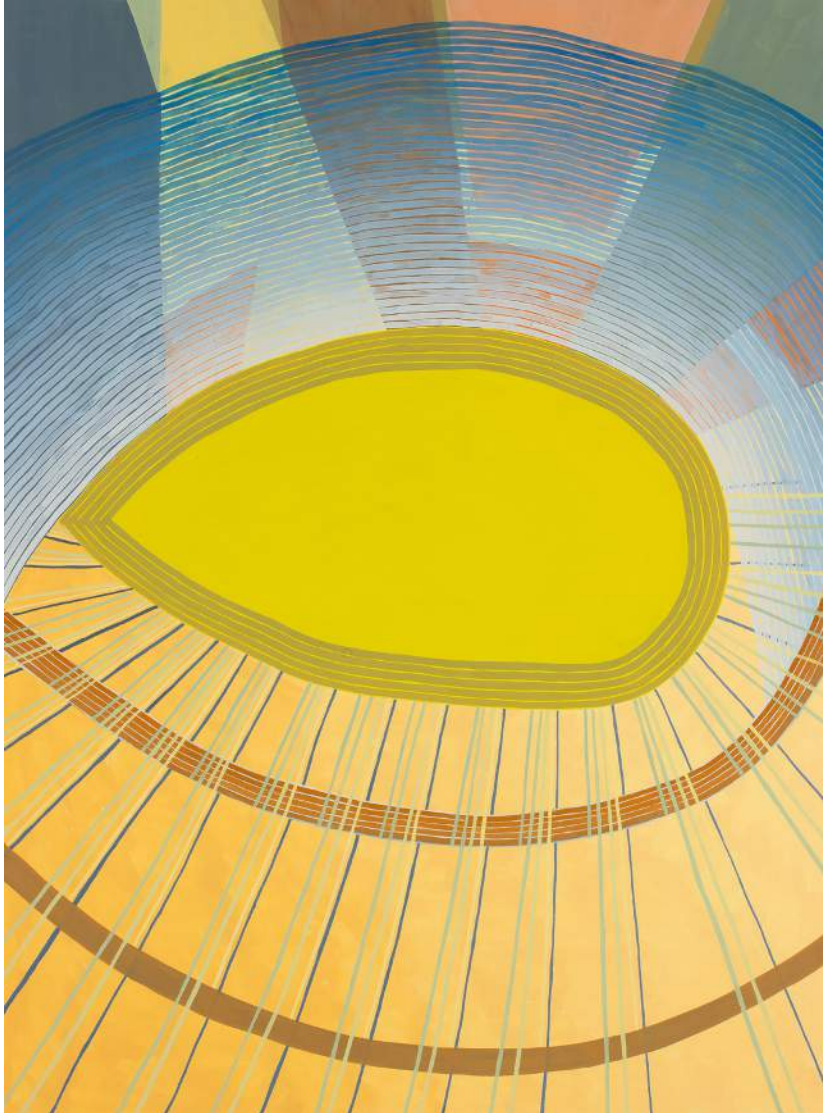
MARIELLA BISSON
GEORGE HERMAN
JENNY KEMP
CLAIRE MCCONAUGHY
BILL SCHMIDT
KATHY SOLES



547 WEST 27TH STREET
SUITE 500, NY, NY 10001
WWW.THEPAINTINGCENTER.ORG
HOURS: TUES - SAT, 11 - 6 PM
(212) 343-1060

Variations in Paint

Variations in Paint presents six artists whose work reflects the language and style of varied techniques and forms. Mariella Bisson, George Herman, Jenny Kemp, Claire McConaughy, Bill Schmidt and Kathy Soles' work generate diverse conversations surrounding painting. Mariella Bisson creates paintings and mixed media works on linen. She uses landscape elements of rock, forest and water to explore themes of time, light, gravity, change and constancy. George Herman's oil and mixed media paintings on wood are moody, textured portraits that are mask-like in their representation, with features obscured by layers of paint. Jenny Kemp's abstract gouache works on paper explore geometric forms, color and spatial relationships, painted with thin lines that create rhythm and movement in the work. Bill Schmidt creates small-scale gouache and pencil paintings of organic, geometric and structural forms in muted palettes, which are directly influenced by his early sculptural work. Kathy Soles paints "...ocean currents, navigation routes, intersections of land, sea, and sky, and the mystery of what exists "below the surface". At the heart of these works are the metaphoric possibilities that result from the contemplation of nature." Internal and external elements converge in Claire McConaughy's paintings. She makes them through visual associations, letting them connect as they will.



Jenny Kemp, *Nowhere Fast*, 2014,
25" x 32" gouache on paper

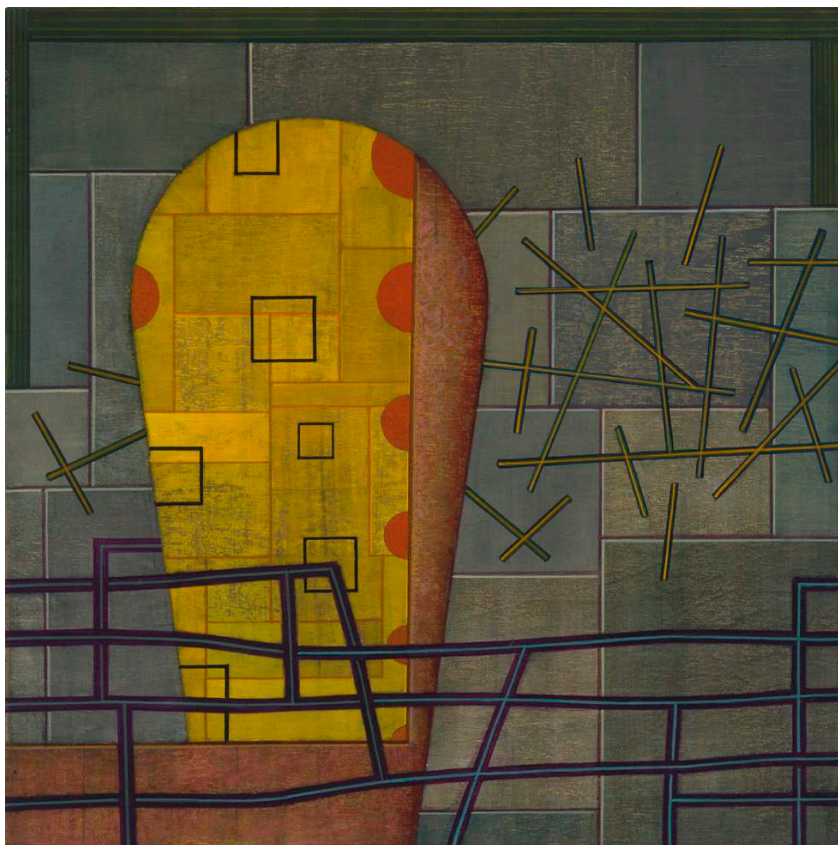
Mona Brody
Alyce Gottesman
Jo Ann Rothschild



George Herman, *Man 6*, 2011, 32" x 32",
oil, mixed mediums on wood



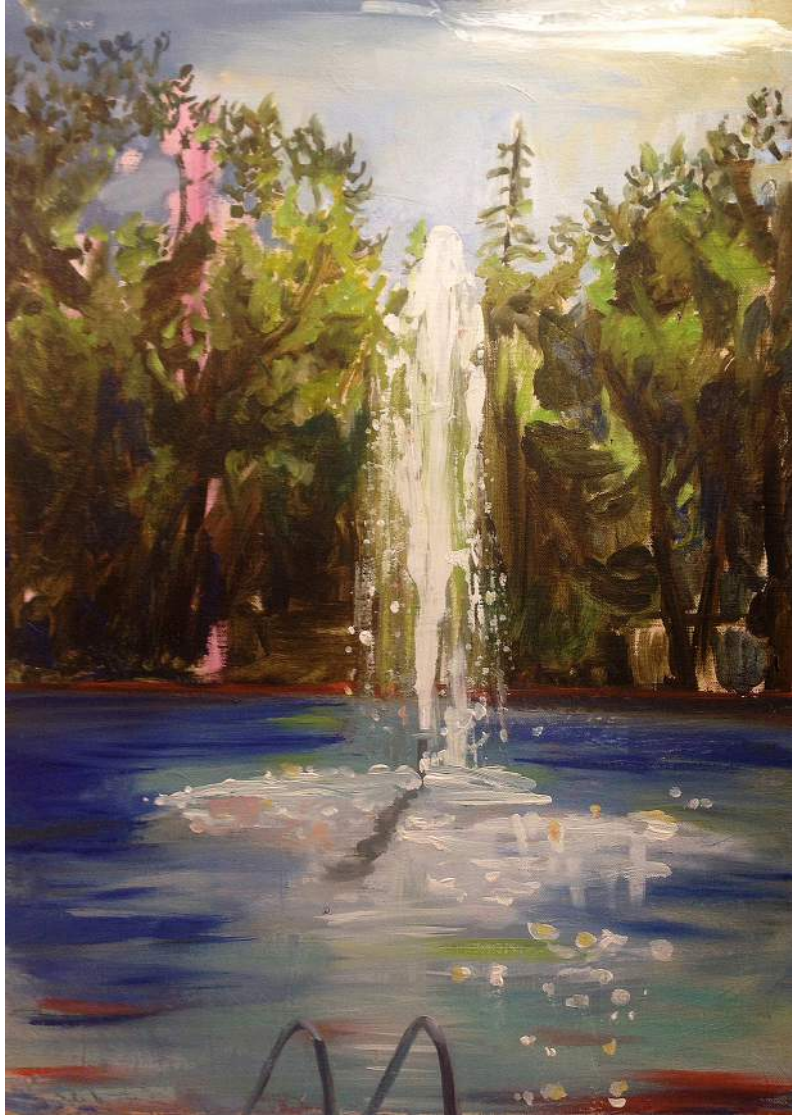
Kathy Soles, *All in One Day*, 2014, 44" x 48",
oil on canvas mounted on board



Bill Schmidt, *That is Then, This was Now*, 2014,
10" x 10", gouache and ink on panel



Mariella Bisson, *Water Falling, Rocks Fallen*,
2014, 38" x 60", mixed media on linen



Claire McConaughy, *Swimming Pool Fountain*,
2014, 36" x 24", oil on canvas

