

LITTLE COTTONWOOD
CANYON CLIMBING AREA
HISTORIC DISTRICT

NATIONAL REGISTER OF HISTORIC PLACES NOMINATION

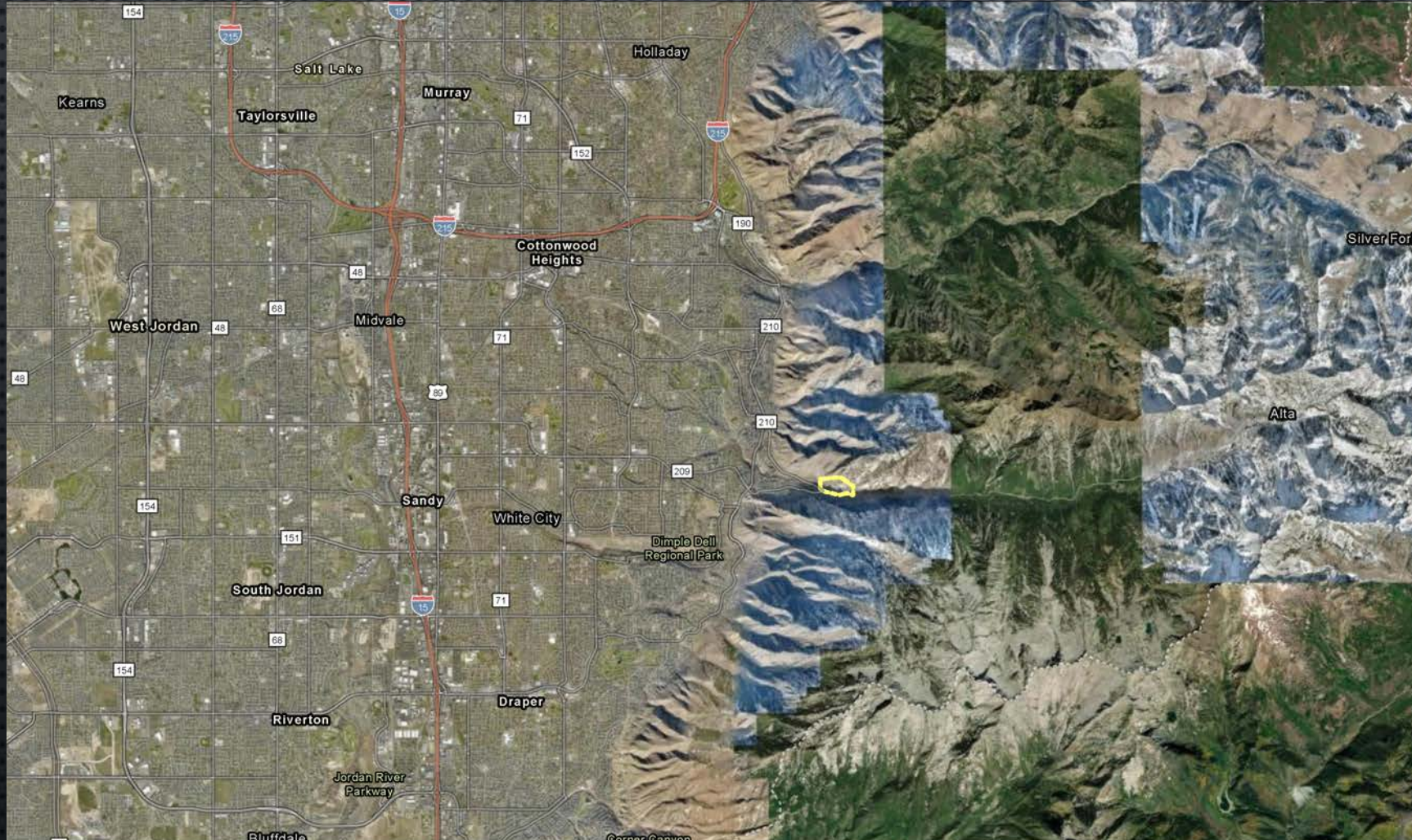
FOREST SERVICE PUBLIC MEETING

MAY 9, 2023

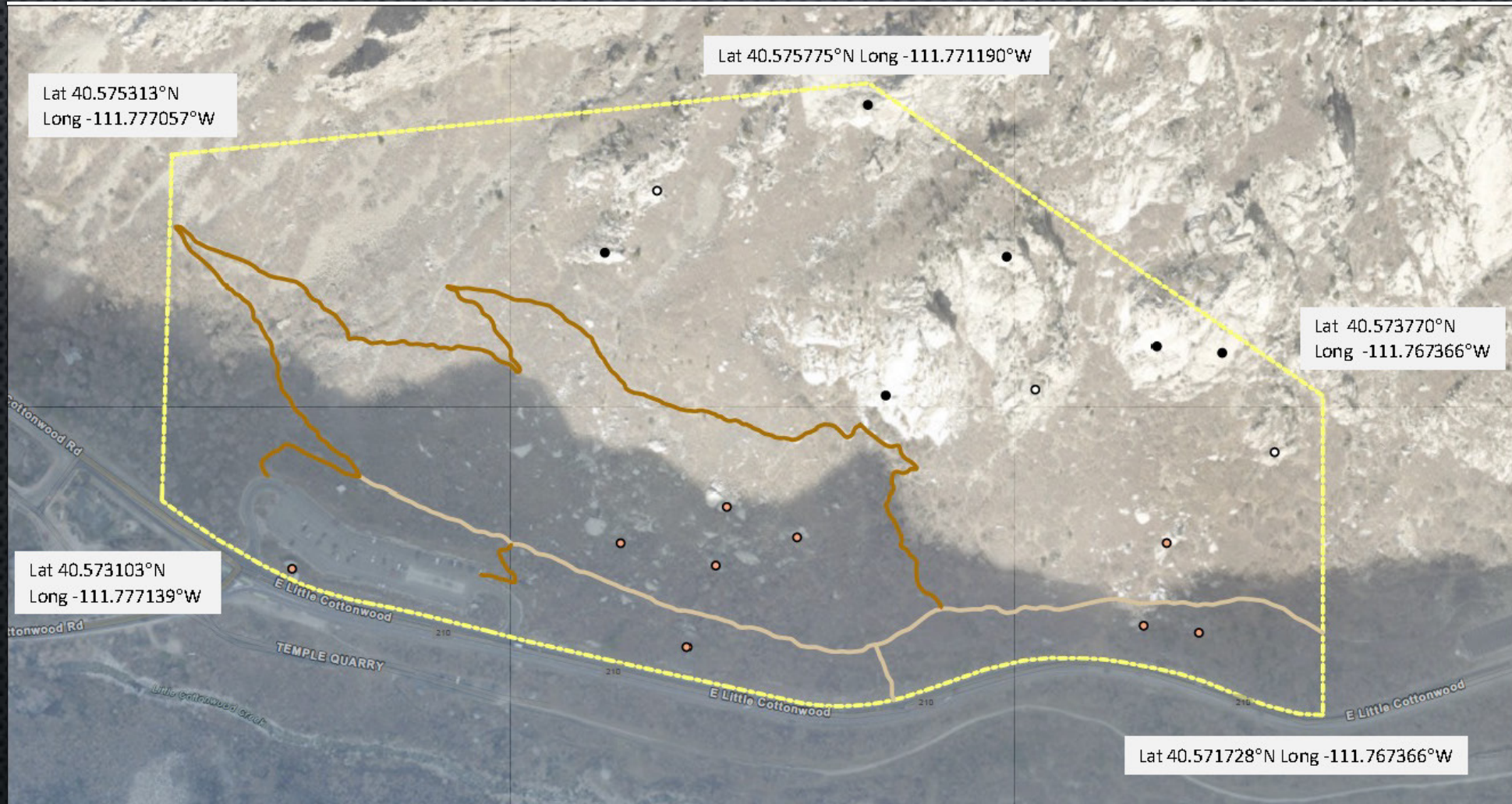
INTRODUCTION & RECOGNITION

- KIRK HUFFAKER, PRINCIPAL & ARCHITECTURAL HISTORIAN, KIRK HUFFAKER PRESERVATION STRATEGIES
- SALT LAKE CLIMBERS ALLIANCE
- MARRIOTT LIBRARY SPECIAL COLLECTIONS, UNIVERSITY OF UTAH
- USDA FOREST SERVICE, UINTA-WASATCH-CACHE NATIONAL FOREST
- UTAH STATE HISTORIC PRESERVATION OFFICE

WHERE IS THE LCC CLIMBING HISTORIC DISTRICT?



WHAT IS THE HISTORIC DISTRICT BOUNDARY?



HISTORIC DISTRICT TIMELINE

- 1920 CA. WATER PIPELINE ROUTE
- 1958 FORMATION OF THE ALPENBOCK CLIMBING CLUB
- 1961 FIRST KNOWN CLIMB ON LCC GRANITE
- 1962 FIRST DOCUMENTED CLIMB AND ROUTE
- 1965 BEGINNING OF THE LOWE ERA
- 1974 END OF THE HISTORIC PERIOD

PHYSICAL DESCRIPTION

- MATERIALS: ROCK WITHIN DISTRICT IS GRANITE (QUARTZ MONZONITE)
 - PROVIDES GEOMETRIC JOINT PATTERNS THAT AFFORDS PREDICTABILITY IN SURFACE QUALITY
 - CLIMBING TAKES PLACE IN CRACKS AS WELL AS DIRECTLY ON ROCK FACES
- SURROUNDING VEGETATION INCLUDES GAMBEL OAK, RABBITBRUSH, AND SMALL PLANTS
- TRAIL NETWORK CONNECTS CLIMBING SITES
- VIEWSHEDS TO AND FROM THE HISTORIC DISTRICT ARE COMPONENTS OF THE HISTORIC SETTING



PHYSICAL DESCRIPTION

Contributing Sites

Bouldering Sites (9)

Cabbage Patch Roadside East

Cabbage Patch Roadside West

Cabbage Patch Uphill Boulders

Outlying Boulders

Secret Garden Center

Secret Garden East

Secret Garden North

Secret Garden South

Secret Garden West

Vertical Climbing Sites (6)

Bong Eater Buttress

Dragon Arch

Memorial Day Buttress

Mexican Crack Buttress

The Egg

The Sail Face

Trails (2)

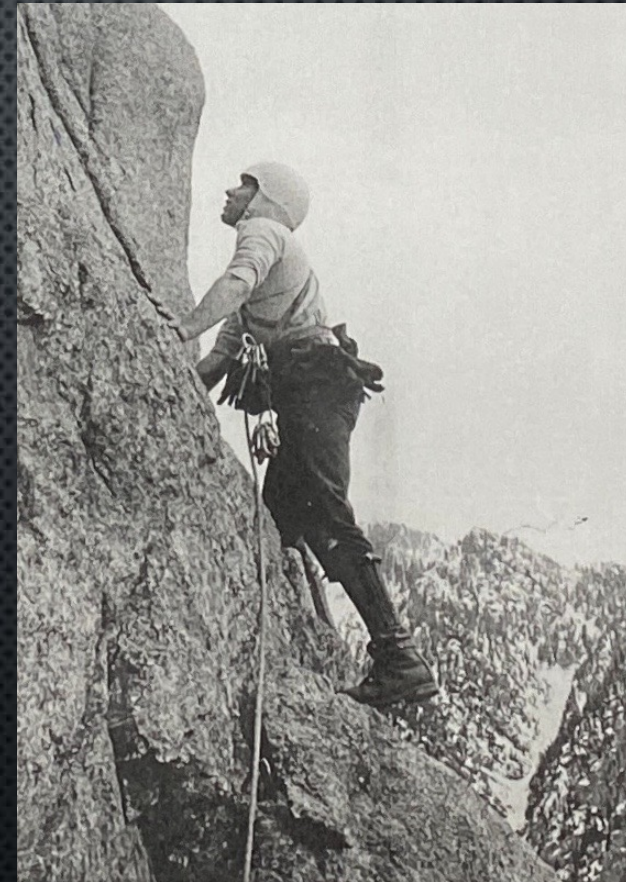
SR 210 climbing access trail

Pipeline trail



HISTORIC AND CULTURAL SIGNIFICANCE

- NOMINATED UNDER CRITERION A – PROPERTY IS ASSOCIATED WITH EVENTS THAT HAVE MADE A SIGNIFICANT CONTRIBUTION TO THE BROAD PATTERNS OF OUR HISTORY
- AREAS OF SIGNIFICANCE – RECREATION, SOCIAL HISTORY
- PERIOD OF SIGNIFICANCE – 1962-1974



Rick Reese leading on Body Buttress, May 1965

HISTORIC AND CULTURAL SIGNIFICANCE RECREATION

- CONTRIBUTIONS TO EARLY TECHNICAL CLIMBING IN THE STATE
 - ENTHUSIASM FOR THE SPORT
 - DEVELOPMENT OF EQUIPMENT
 - DEVELOPMENT AND PRACTICE OF SAFETY TECHNIQUES
 - ADOPTION AND PROMOTION OF CLEAN CLIMBING



HISTORIC AND CULTURAL SIGNIFICANCE

SOCIAL HISTORY

- LOCATION OF ACTIVITY BY THE ALPENBOCK CLIMBING CLUB
 - INDIVIDUALS CRITICAL TO BUILDING THE UTAH CLIMBING COMMUNITY
 - CONNECTIONS TO THE NATIONAL CLIMBING COMMUNITY
 - BUILT A REGIONAL EXPERTISE THAT SERVED AS THE CORE RESCUE UNIT IN GRAND TETON NATIONAL PARK FOR OVER A DECADE

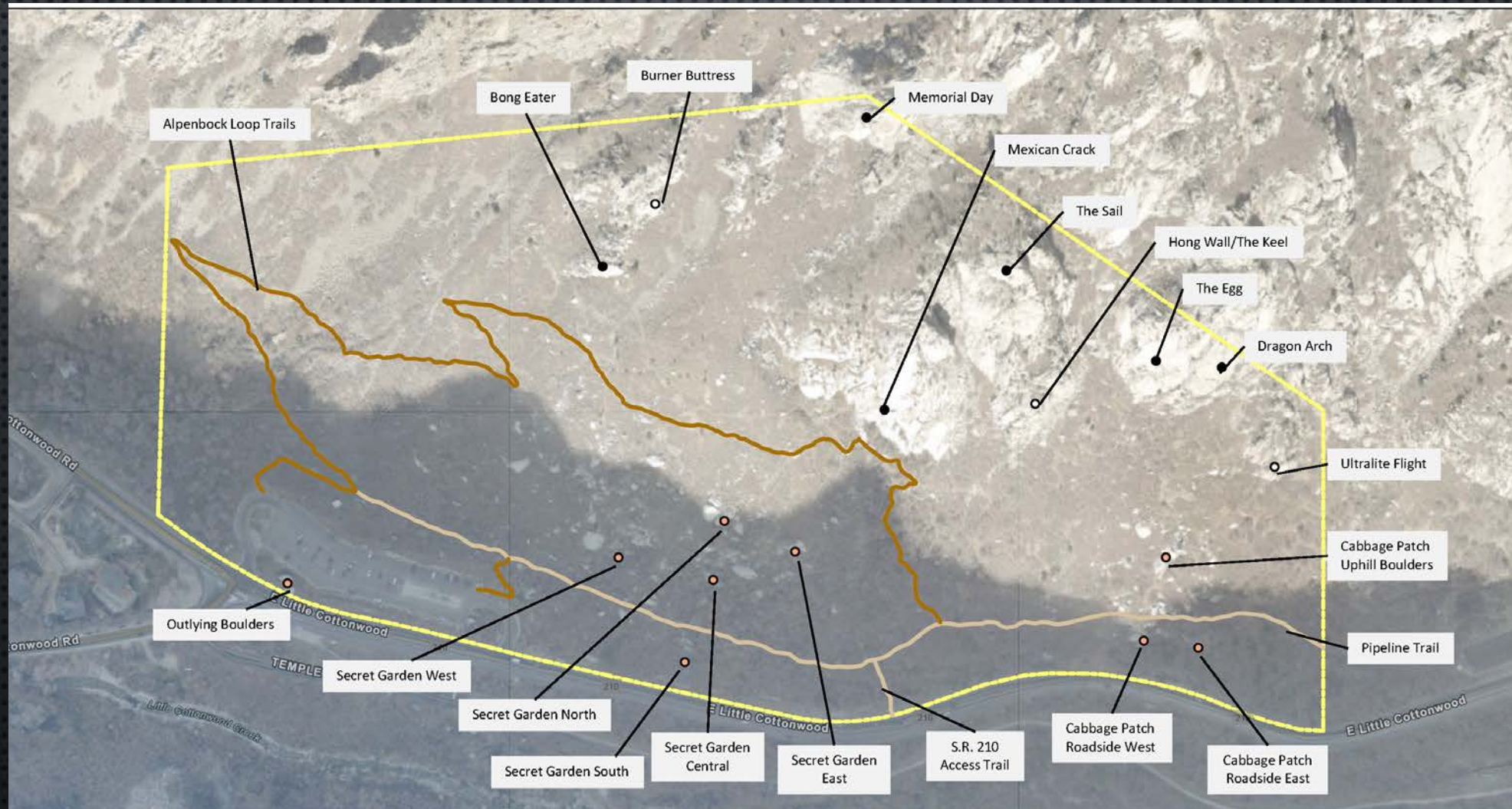


Checking equipment are Bob Stout, left, Dick Wallin, Curtis Hawkins, Doug Calder, Steve Utley.

PRECEDENT

- CAMP 4
 - NRHP LISTED IN 2003 FOR CULTURAL SIGNIFICANCE
 - DOES NOT INCLUDE ANY RECREATIONAL CLIMBING AREAS
- CITY OF ROCKS
 - DESIGNATED AS A NATURAL RESERVE IN 1988 FOR HISTORIC AND CULTURAL SIGNIFICANCE
 - DOES NOT INCLUDE NRHP DESIGNATION
- EAST LONG PEAKS TRAIL, ROCKY MOUNTAIN NATIONAL PARK
 - NRHP LISTED IN 2006
 - HIKING TRAIL WITH A SHORT SECTION OF CLASS 3 CLIMBING; NOT A PRIMARY FEATURE OF ITS SIGNIFICANCE

RESOURCE EVALUATIONS



THANK YOU

- KIRK HUFFAKER
- KIRK HUFFAKER PRESERVATION STRATEGIES
- KIRK@KIRKHUFFAKER.COM
- (801) 949-4040