

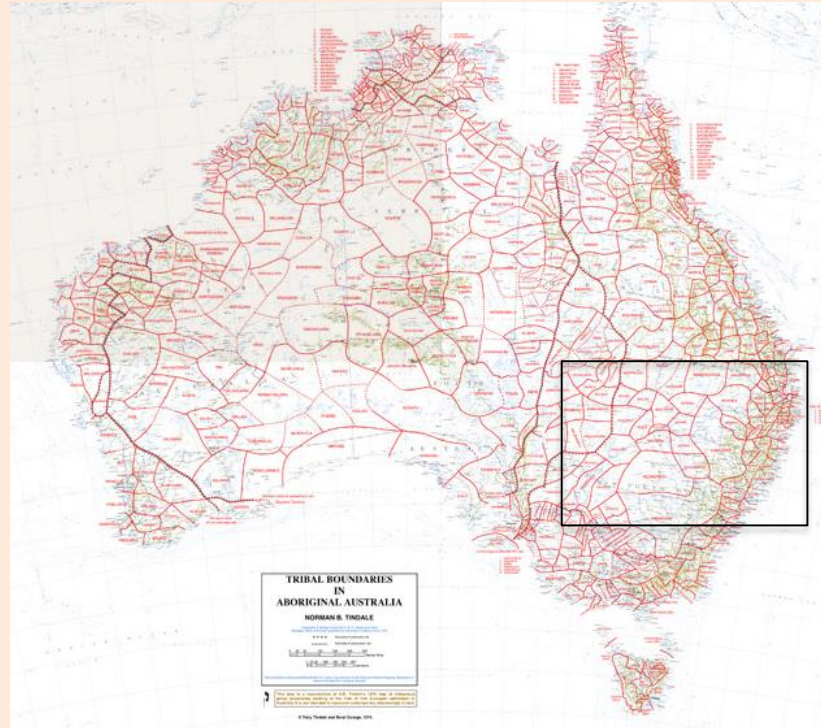
# Ngemba Data Research Hub



## Australian First Nations Data Governance Project

**Ngemba Community Working Party  
Dhirranggal Solutions**

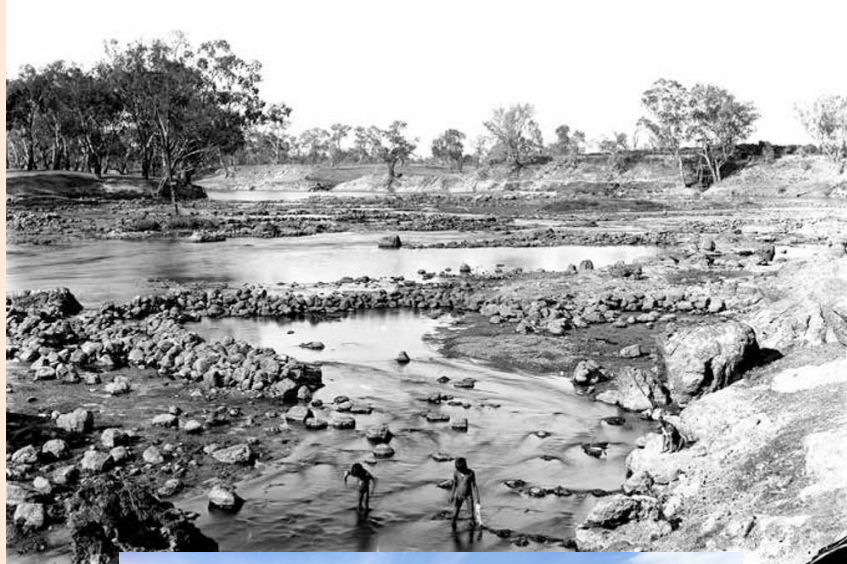
# Ngemba Country



Norman Tindale map, 1974



# Brewarrina Ngunnhu



Ngemba Community Working Party  
Dhurrangal Solutions





Ngemba Community Working Party  
Dhurrangal Solutions





Ngemba Community Working Party  
Dhirranggal Solutions





Ngemba Community Working Party  
Dharrangal Solutions





Ngemba Community Working Party  
Dhirranggal Solutions







Ngemba Community Working Party  
Dhirrangal Solutions



# Pre-colonisation Social Structures

Table No. I.

Phratry	Father	Mother	Son	Daughter
Ngurrawun	Ippai	Kubbitha	Murri	Matha
	Kumbo	Matha	Kubbi	Kubbitha

Phratry	Father	Mother	Son	Daughter
Mūmbun	Kubbi	Ippatha	Kumbo	Butha
	Murri	Butha	Ippai	Ippatha

Table No. II.

Blood.	Father	Mother	Offspring
Guaimundhun	Nhurrai	Winggu	Winggu
	Nhurrai	Wanguē	Wanguē
	Wanguē	Winggu	Winggu
	Wanguē	Nhurrai	Nhurrai
Guaigulir	Winggu	Wanguē	Wanguē
	Winggu	Nhurrai	Nhurrai

From Matthews, R.H. *Ethnological Notes of the Aboriginal Tribes of New South Wales and Victoria* (Sydney: F.W. White, 1905, pp. 6 & 8)





# Government Approaches

Lead government agencies advocating for First Nations peoples.

(Data collection and policy development, service delivery, grants)

- Aboriginal Affairs NSW (State)

Brewarrina Community Portrait (Census)

- Prime Minister and Cabinet (Federal)



# AANSW Community Portrait



## *Community Portrait*

### Brewarrina Indigenous Location

A portrait of the Aboriginal community of Brewarrina, compared with NSW, from the 2011 and earlier Censuses.

#### Contents

<b>Overview</b>	Preface	2
	Snapshot	3
	Tracking Aboriginal differences	4
<b>Population</b>	Aboriginal population & growth	5
	Life stages	6
	Age profile	7
	Population Indicators	8
	Generations	9
<b>Households</b>	Households types & sizes	10
	Household Indicators	11
	Types of housing	12
	Housing costs & tenure	13
	Housing Gap Indicators	14
	Internet @ home	15
<b>Incomes</b>	Individual Incomes	16
	Household Incomes	17
	Income Gap Indicators	18
	Employment	19
	Workforce Gap Indicators	20



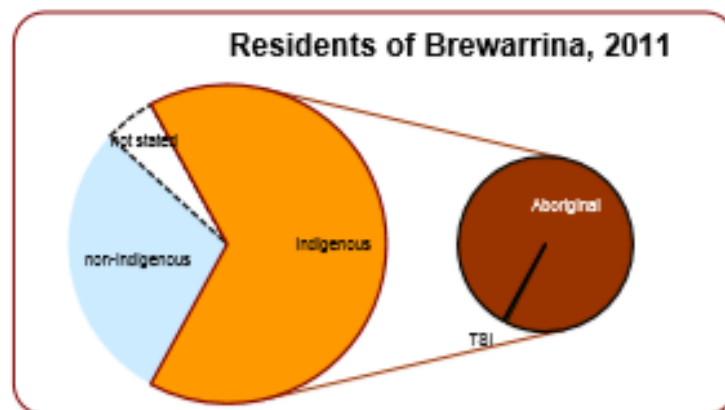
## Aboriginal population & growth

In the 2011 Census, Brewarrina's Aboriginal population was counted as 609 people, of whom 606 identified as Aboriginal and 3 as Torres Strait Islander.

⌘ Aboriginal people comprised 66.0% of Brewarrina's population, which was much higher than in NSW (2.5%).  
5.2% of Brewarrina people did not say whether they had Aboriginal or Torres Strait Islander origins.

⌘ Among the Aboriginal people here, there were 106 females per 100 males.  
There were 113 males per 100 females among non-Aboriginal people.

⌘ The ABS estimates that the Census undercounted the Aboriginal and Torres Strait Islander population by 17% nationally, so on average the population is a fifth more than counted.



From Aboriginal Affairs New South Wales, *Brewarrina Community Portrait* (2011)  
<http://www.aboriginalaffairs.nsw.gov.au/pdfs/profiles/Brewarrina.pdf>

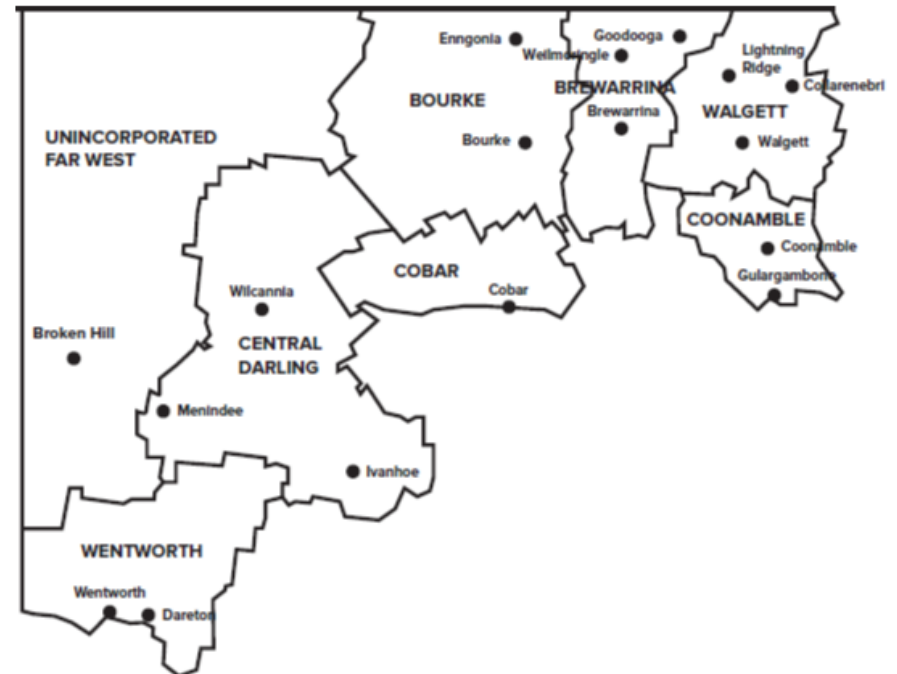


# Regional and local governance



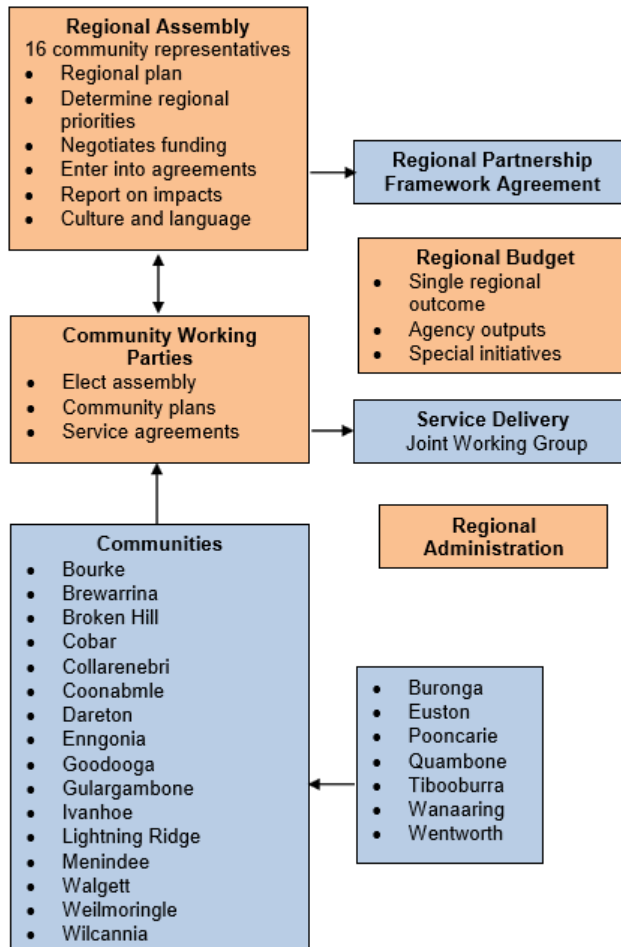
***Murdi Paaki Regional  
Assembly***

Comprised of 16 communities in  
local government council regions





# Service delivery framework (local and regional)



Murdi Paaki Regional Assembly, *Charter of Governance* (September 2015),  
[www.mpra.com.au/uploads/documents/MPRA%20Charter%20of%20Governance.pdf](http://www.mpra.com.au/uploads/documents/MPRA%20Charter%20of%20Governance.pdf)



# 'Regional' jurisdiction?

## MPRA Charter of Governance (p. 3)

The charter is part of a wider process of establishing jurisdiction for Aboriginal People in the Murdi Paaki Region in our relationships with government and the Australian community.

### Building regional governance

The strategy for Aboriginal jurisdiction is built on a number of planks:

- Aboriginal sovereignty
- Self – determination
- Leadership and recognition
- Regional autonomy and authority
  
- Creating the environment for community governance
- Community and regional constitutions
- Community and regional charters for Aboriginal jurisdiction

But... how do we achieve quality assurance in indigenous data governance?  
Inherent jurisdiction based on apical ancestral connection to country.

# Regional Projects – gathering data



- MPRA Partnership with Sydney University
- Aged care project in Brewarrina
- Data gathered – community and elder interviews
- **HOW DO WE ENSURE FIRST NATIONS JURISDICTION under a regional framework?**
- Senior cultural advisor liaise between Uni and community
- Data owned by local Ngemba Community Working Party
- All reports drafted in partnership and reviewed by Traditional Owners

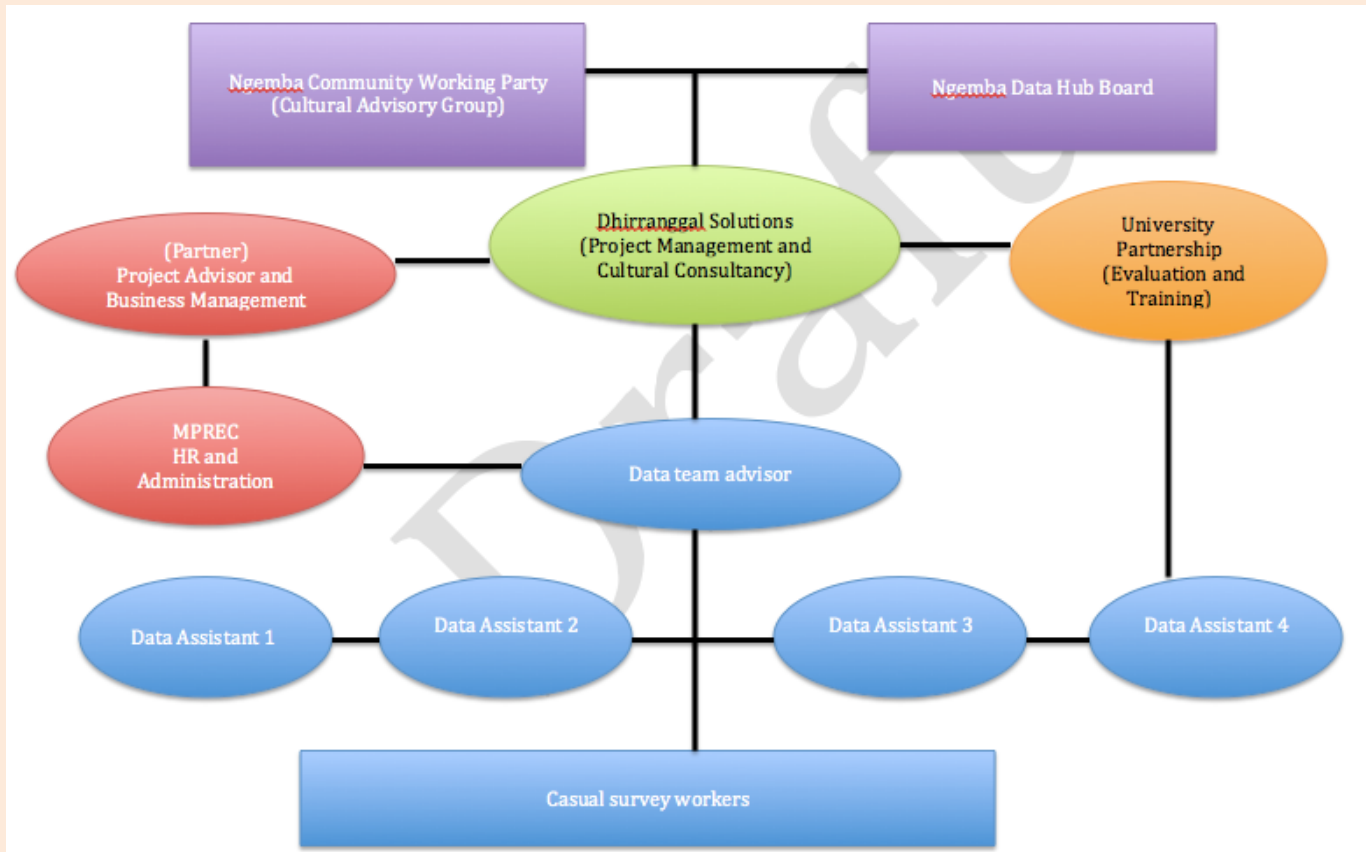




# Vision

‘The development of a community owned and operated data and research hub. This will monitor and evaluate the maintenance of Culture and Heritage, and Wellbeing of the Ngemba Nation for self-determining, evidence-based local decision making and service evaluation.’

# Nation Group Level Ngemba Data Research Hub



Rebuilding capacity and infrastructure



# Nation rebuilding and data sovereignty

- Data FOR Governance –
- Who is the self in self-determination?

## Cultural Health Indicators (draft)

- Population
- Cultural and Environmental assets
- Social structures
- Governance structures (jurisdiction)
- Learning environments (transfer of knowledge)
- Arts and culture
- Spirituality

