



Be a Kid! 2024 presents

RYSE

to the

FUTURE

SPONSORSHIP PACKET

Friday, April 26, 2024 6p-10p

Dear Friend of RYSE,

Our annual Be a Kid! fundraiser is coming to RYSE on Friday April 26th, 2024, with the theme **RYSE to the Future: Creating the World Young People Deserve**. Thank you for considering joining as an event sponsor to make this fundraiser a success!

The “RYSE to the Future” theme embodies Black, Indigenous and young people of color’s powerful vision: strong, healthy, united communities where equity is the norm and violence is neither desired nor required. The young people who organized to create RYSE over 15 years ago, and who designed the beautiful campus we steward today, have created the foundation for future generations to thrive. NOW is the time and place for youth to lead, dream, and love.

Our community partners who step up as sponsors are critical to the success of RYSE’s annual fundraiser. This is the one night a year that the RYSE campus opens to 21+ year olds ONLY, to enjoy and explore what it’s like to be a kid and what we can do as adult allies to make the world a better place for our young people. We expect over 400 guests in attendance, and we are honored to feature the Be a Kid! sponsors throughout the night.

And while the future will include better pay equity and value for community work, we know that fundraiser ticket costs are not accessible for all those whose service is indispensable in our community. This year, we are inviting event sponsors to **help provide 10 discounted tickets with an additional contribution of \$500**.

Please reach out to Erin Garcia Miller at erin@rysecenter.org with any questions, in-kind donations, or other ideas to help make this event a success! Please see our sponsorship levels on page 4 for more details.

In community,



Kimberly Aceves-Iñiguez
Co-Founder & Executive Director



WHAT TO EXPECT

This beloved event brings community members together for a dynamic happy-hour-style party to celebrate and uplift the importance of “being a kid” so that we can better understand and affirm the experiences of our young people. All tickets to Be a Kid! will include:

- 1 meal, 1 signature drink
- Department activities
- Interactive games
- RYSE Shwag
- Dancing
- and much much more!

[Click here to check out this video of last year's Be a Kid! event!](#)





SPONSORSHIP LEVELS

	TRANSFORM	RESTORE	HEAL	CREATE
Benefits	\$20,000-\$40,000	\$10,000-\$20,000	\$5,000-\$10,000	\$1,000-\$5,000
Logo on Event Banner	Large Print	Large Print	✓	✓
Logo on Website	✓	✓	✓	✓
Logo on Instagram Post	✓	✓	✓	✓
Post-Event E-mail	✓	✓	✓	✓

Each sponsorship level includes 4-10 event tickets. Tickets received must be subtracted from the total tax-deductible donation amount. Tickets are \$75 FMV.



HOW TO DONATE

in 4 easy steps

1. Select your giving tier

Take this sponsorship packet to your team and assess your level of giving. Consider the benefits for each tier. We are expecting 400 in-person attendees and over 10,000 marketing impressions.

2. Consider giving an extra \$500 to sponsor 10 event tickets

This year, we also invite you to increase your contribution by \$500 to help us provide 10 discounted tickets to WCCUSD Teachers, Youth Alumni, Community Health Workers, and other front line workers.

3. [Submit payment to our online sponsorship portal \(click here\)](#)

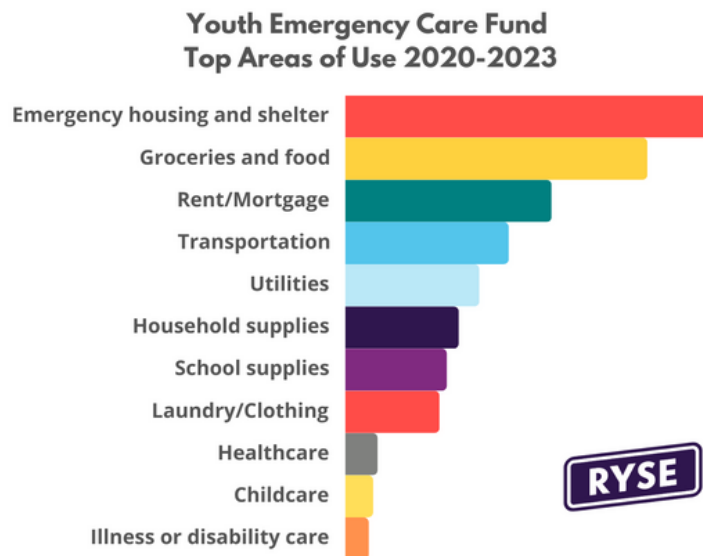
We are accepting online payments with Google Pay, Card, and ACH. NOTE: There is a small percentage processing fee that you can cover with your donation. [If you'd like to donate by check, please print, fill out and mail in this form \(click here\)](#). Donations are tax-deductible.

4. You're DONE!

Our Donor Events and Culture Strategist, Erin, will be in touch with more information to track your sponsor benefits and to keep you in the loop in preparation for the Be a Kid! fundraiser event.

IMPACT OF YOUR INVESTMENT

Young people in Contra Costa face unjust conditions threatening and denying their access and rights to basic human needs. The COVID pandemic and 2020 racial reckonings revealed these conditions in explicit and visible ways not previously understood, recognized, or acknowledged. Launched in 2020, the Youth Emergency Care Fund provides direct and timely financial resources for young people whose basic needs are not being met or are being threatened.



The Youth Emergency Care Fund supports Transitional Age Youth (TAY), youth held in legal criminal systems (and those re-entering community from those systems), youth in foster care, LGBTQ+ youth, and youth and families experiencing situations of domestic violence, intimate partner violence, or exploitation. **Since its creation in 2020, the Youth Emergency Care Fund has provided support for over 300 young people and their families. Our goal is to raise \$200,000 for 2024.**

Thank you for your support at all levels, and for supporting West Contra Costa County young people in all their power and vision. We encourage you to amplify our efforts to serve and center the young people in our community.

You can learn more about and contribute to the RYSE Youth Emergency Care Fund at www.rysecenter.org/donate

ABOUT RYSE

RYSE creates safe spaces grounded in social justice for young people to love, learn, educate, heal, and transform lives and communities. Over 700 young people ages 13–24 engage as members each year, and 95% identify as Black, Indigenous and Youth of Color.

RYSE's programming occurs across areas of **Health Justice**, **Education and Economic Justice**, **Youth Justice**, **Youth Power Building**, and **Media Arts & Culture**. In all of these areas, a range of supports and programs are provided that include case management, therapeutic support, drop-in and pop-up programs, weekly workshops, cohort-based programs, internships, and fellowships. All RYSE programs are platforms to build loving and healing relationships with and between young people.



Over the past 3 years, RYSE has deepened our roots and raised our vision through expansion of our physical space. The RYSE Commons campus, new Health Justice Center, and RYSE Village have been designed by young people to serve as a hub for community resilience, care and liberation. RYSE belongs to young people – past, present, and future.



**Thank you for
your generous
consideration!**

Contact

Phone (510) 374-3401

Website www.rysecenter.org

Email erin@rysecenter.org

Address 3939 Bissell Ave. Richmond, CA 94805