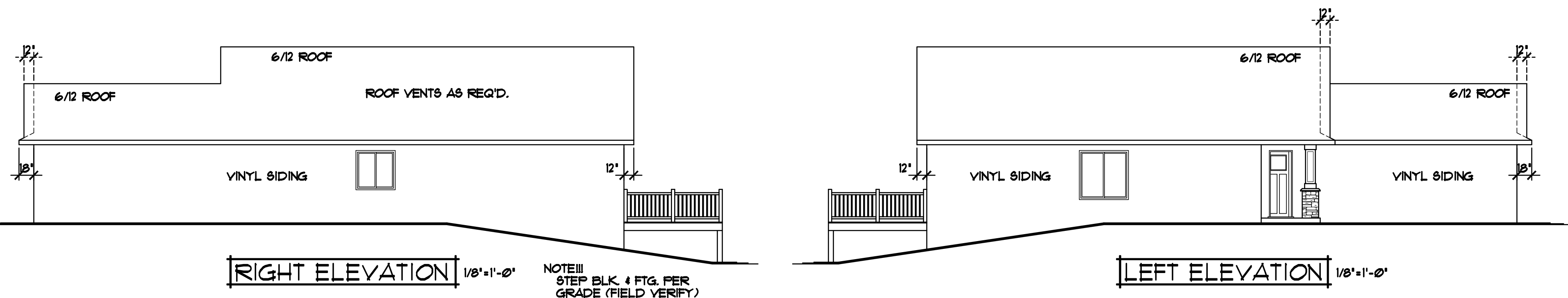


| REVISIONS | BY |
|-----------|------|
| 143071 | N.F. |
| 16162 | N.F. |
| 17023 | N.F. |
| 17274 | N.F. |

SPECIAL NOTICE:
CROIX DESIGN AND DRAFTING, INC. ACCEPTS NO RESPONSIBILITY FOR ERRORS AND/OR OMISSIONS. THESE DRAWINGS ARE DESIGN CONCEPT ONLY. EVERY EFFORT HAS BEEN MADE TO DESIGN TO THE BEST OF OUR KNOWLEDGE AND BELIEFS. THE USER SHALL CONTACT THE DESIGNER IMMEDIATELY UPON DISCOVERY OF ANY OMISSIONS, ERRORS, OR DISCREPANCIES. THE USER SHALL BE RESPONSIBLE FOR ANY CHANGES OR ADJUSTMENTS REQUIRED DURING ACTUAL CONSTRUCTION. NO REPRESENTATION IS MADE OR IMPLIED FOR ACCURACY.

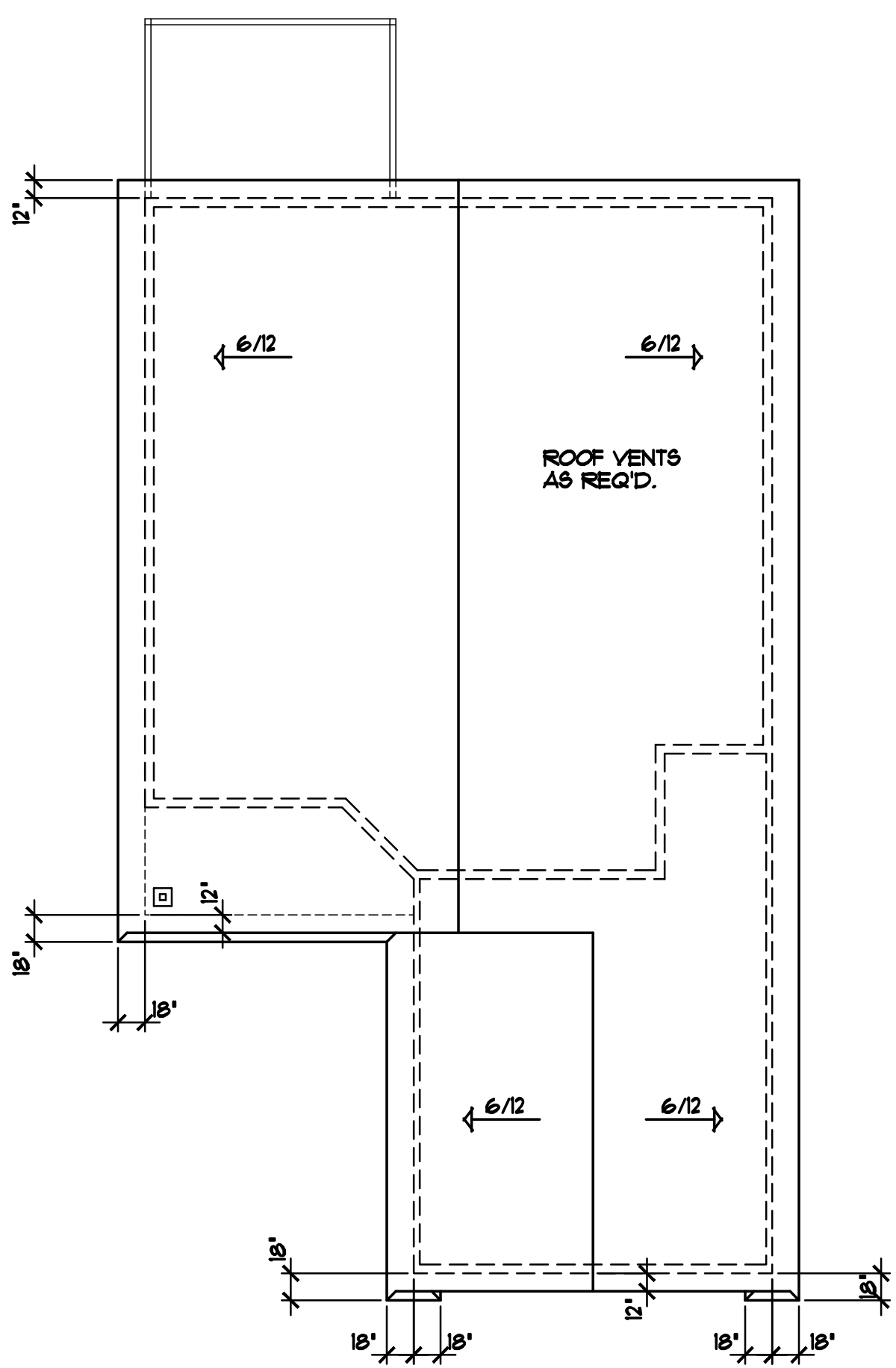
COPYRIGHT NOTICE: ALL RIGHTS RESERVED. THESE ARCHITECTURAL PLANS AND ALL RELATED WORKS ARE PROTECTED BY UNITED STATES COPYRIGHT LAWS, AND MAY NOT BE REPRODUCED, COPIED, OR TRANSMITTED IN ANY MANNER WITHOUT THE EXPRESS WRITTEN PERMISSION OF CROIX DESIGN AND DRAFTING, INC.



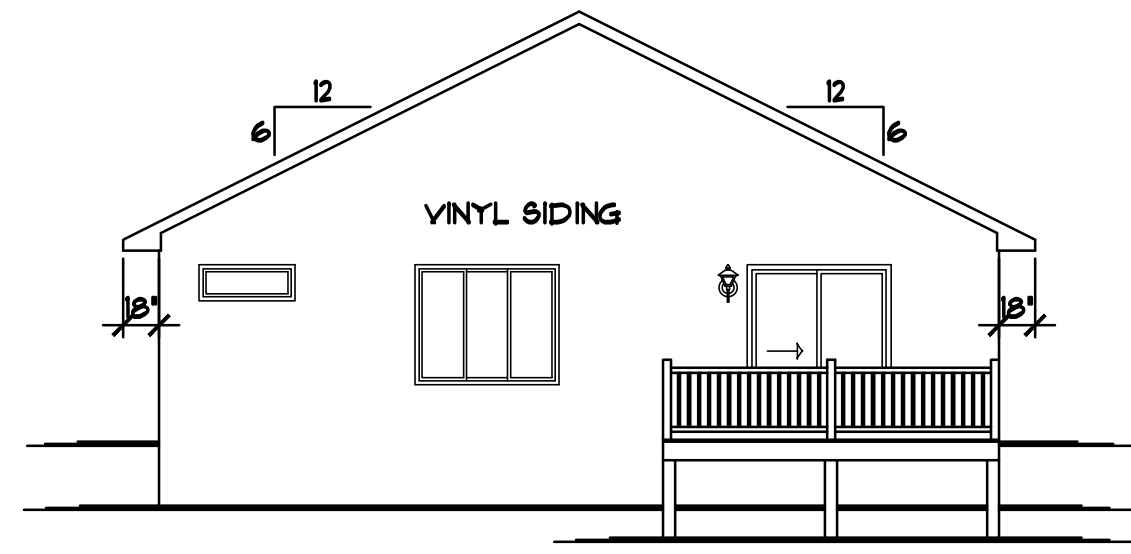
RIGHT ELEVATION 1/8"=1'-0"

LEFT ELEVATION 1/8"=1'-0"

NOTE!!!
STEP BLK. & FTG. PER GRADE (FIELD VERIFY) MAINTAIN MINIMUM DISTANCE OF 42" FROM GRADE TO BOTTOM OF CONC. FTG.

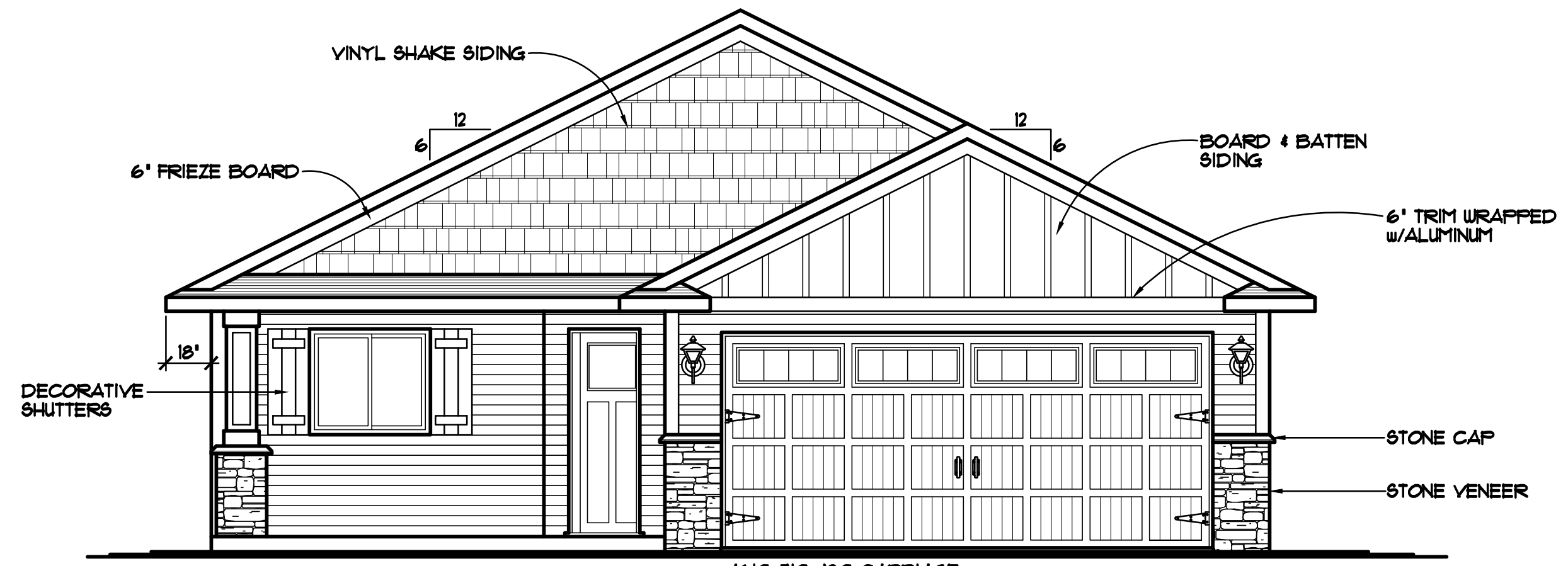


BIRD'S-EYE ROOF PLAN 1/8"=1'-0"



REAR ELEVATION 1/8"=1'-0"

- VECTOR WINDOWS SPEC'D. VERIFY ALL DOOR AND WINDOW ROUGH OPENINGS WITH SUPPLIER
- ALUMINUM SOFFITS & FASCIA
- VINYL SIDING/CORNER TRIM
- STONE VENEER AS SHOWN



FRONT ELEVATION 1/4"=1'-0"

1188 SQ. FT. MAIN LEVEL
48 SQ. FT. MECH. RM. NOT INCLUDED

THE:
ISANTI MODEL HOME
938 WINSOME WAY NW
LOT 93, BLOCK 3, VILLAGES ON THE RUM
ISANTI, MN

DESIGN and DRAFTING BY:

ARCHITECTURAL DESIGN and DRAFTING SERVICE • HOME PLAN SERVICE • CUSTOM HOMES • REMODELING • PHONE: 763.757.5997 • ANDOVER, MINNESOTA • WWW.CROIXDESIGN.COM

BUILT BY:

163-154-5518 LIC. # 3649

| | |
|-------------|------------|
| DRAIN | N.F. |
| CHECKED | XX |
| DATE: | 11/21/2017 |
| SCALE: | AS NOTED |
| CADD FILE # | 17429 |
| SHEET | 1 of 5 |

| REVISIONS |
|-------------------------|
| XXXXXX 0000 BY:XX |
| XXXXXX 0000 BY:XX |

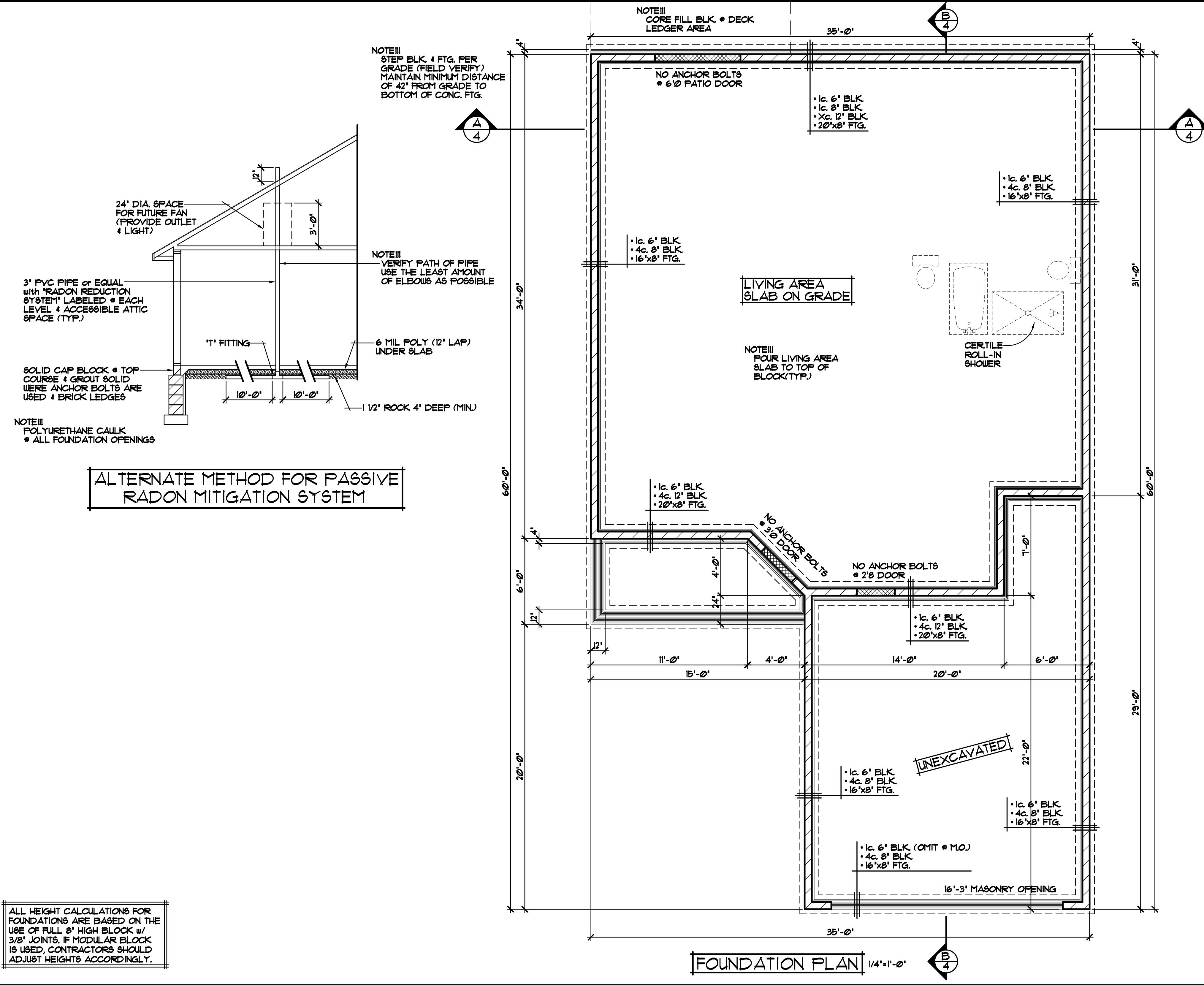
SPECIAL NOTICE:
CROIX DESIGN AND DRAFTING, INC. ACCEPTS NO RESPONSIBILITY FOR ERRORS AND/OR OMISSIONS. THESE DRAWINGS ARE DESIGN CONCEPT ONLY. EVERY EFFORT HAS BEEN MADE TO PREVENT ERRORS, BUT THE USER MUST VERIFY ALL DIMENSIONS AND CONDITIONS IN THE FIELD. THE USER SHALL BE RESPONSIBLE FOR ANY CHANGES OR ADJUSTMENTS REQUIRED DURING CONSTRUCTION. NO REPRESENTATION IS MADE OR IMPLIED FOR ACCURACY.

OFFICE: 763.757.5997
FAX: 763.757.4383
ANDOVER, MINNESOTA
WWW.CROIXDESIGN.COM

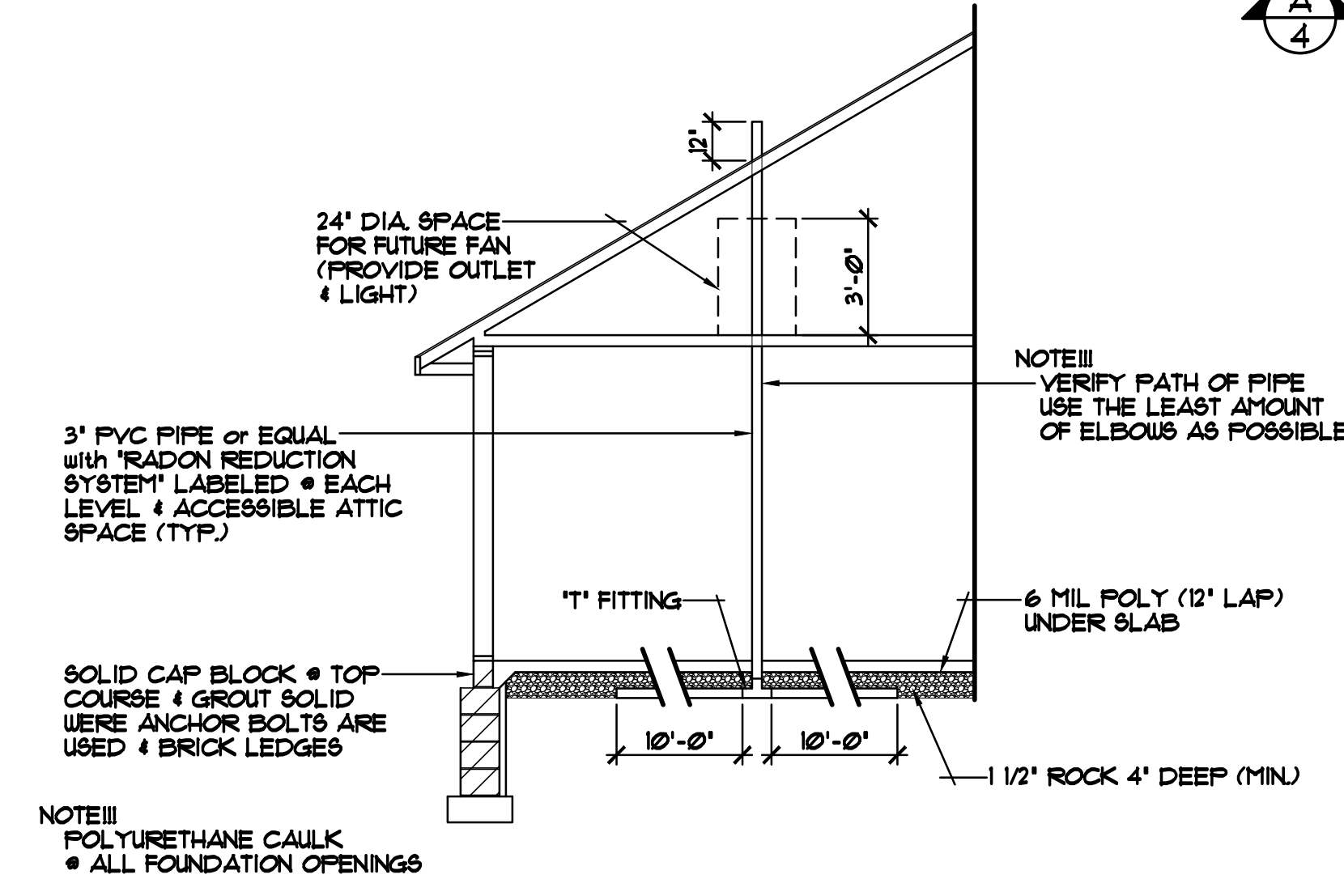


BUILT BY:
SEMLER HOMES

SHEET
2
OF 5
CADD FILE #
17409



ALTERNATE METHOD FOR PASSIVE RADON MITIGATION SYSTEM



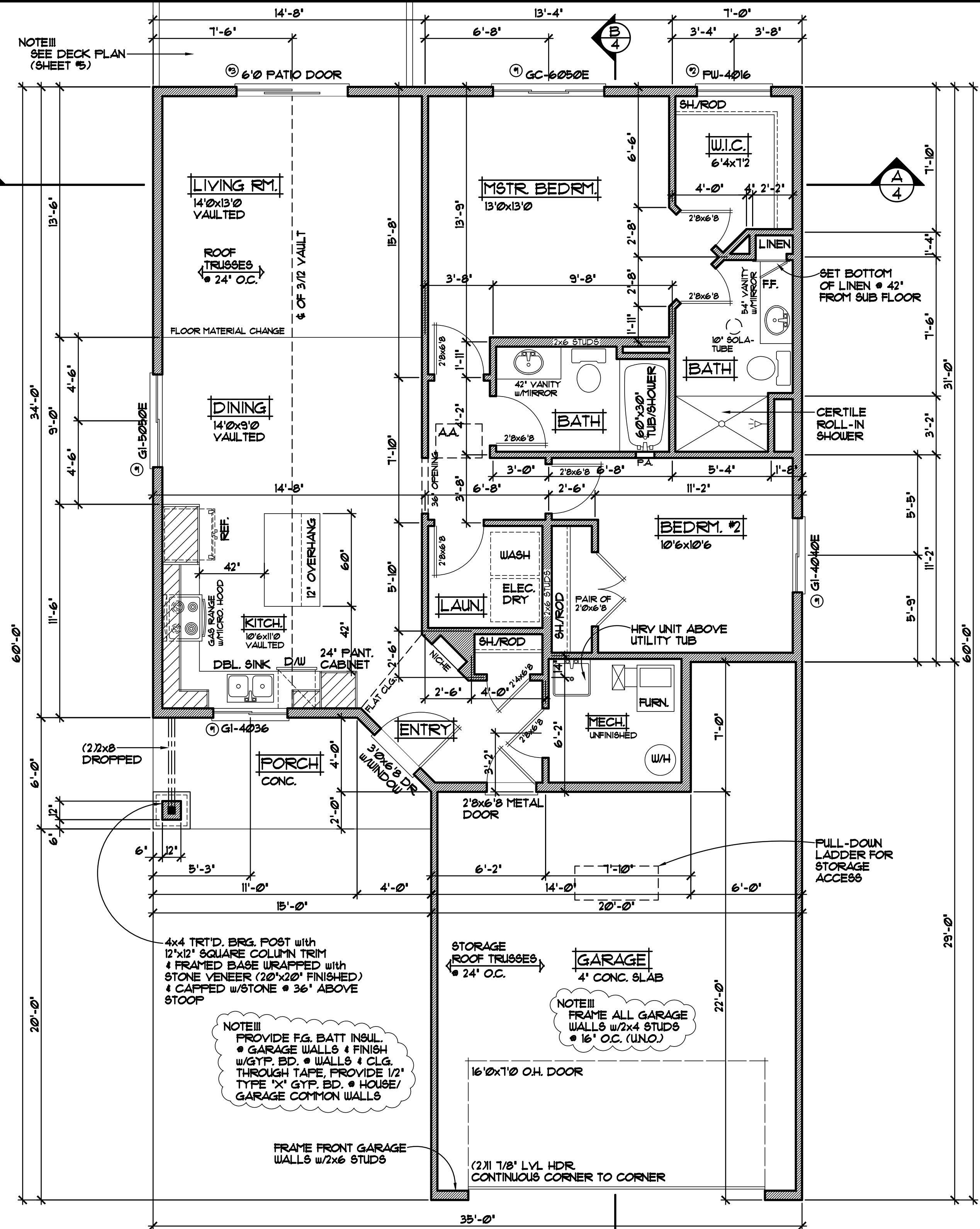
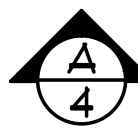
NOTE III
POLYURETHANE CAULK
• ALL FOUNDATION OPENINGS

ALL HEIGHT CALCULATIONS FOR FOUNDATIONS ARE BASED ON THE USE OF FULL 8\"/>

FOUNDATION PLAN 1/4\"/>

| WINDOW and DOOR PERFORMANCE DATA U-VALUE / SHGC | |
|---|--|
| ① GLIDER UNIT U-VALUE = 0.30 SHGC = 0.34 | |
| ② PICTURE/FIXED UNIT U-VALUE = 0.28 SHGC = 0.31 | |
| ③ SLIDING PATIO DOOR U-VALUE = 0.28 SHGC = 0.34 | |

NOTE III
SEE DECK PLAN
(SHEET 5)



NOTE III
ALL WDW/DOOR OPENINGS
TO HAVE (2)2x10 @ 2 GRADE
HDR. OR BETTER (UNO.)

NOTE III
TOP OF RO. FOR ALL
WINDOWS TO BE
6'-10 1/2" FROM
TOP OF CONC. BLK.

NOTE III
VERIFY ALL MECHANICAL
EQUIPMENT LOCATIONS,
LOCATIONS ON PLAN ARE
REPRESENTATION ONLY

NOTE III
8'-1 1/8" PLATE
HEIGHT @ ENTIRE
MAIN LEVEL (UNO.)

NOTE III
PROVIDE F.G. BATT INSUL.
• GARAGE WALLS & FINISH
w/GYP. BD. • WALLS & CLG.
THROUGH TAPE, PROVIDE 1/2"
TYPE 'X' GYP. BD. • HOUSE/
GARAGE COMMON WALLS

NOTE III
FRAME ALL GARAGE
WALLS w/2x4 STUDS
• 16" O.C. (UNO.)

MAIN LEVEL FLOOR PLAN 1/4" = 1'-0"
1188 SQ. FT. MAIN LEVEL (48 SQ. FT. MECH. RM. NOT INCLUDED)

VECTOR WINDOWS SPEC'D.
VERIFY ALL DOOR AND WINDOW
ROUGH OPENINGS WITH SUPPLIER

| REVISIONS |
|-------------------------|
| XXXXXX 0000 BY:XX |
| XXXXXX 0000 BY:XX |

SPECIAL NOTICE:
CROIX DESIGN AND DRAFTING, INC. ACCEPTS NO RESPONSIBILITY FOR ERRORS AND/OR OMISSIONS. THESE DRAWINGS ARE DESIGN CONCEPT ONLY. EVERY EFFORT HAS BEEN MADE TO PREPARE THESE DRAWINGS ACCURATELY. HOWEVER, THE USER SHALL BE RESPONSIBLE FOR VERIFYING ALL DIMENSIONS AND BE RESPONSIBLE FOR ANY CHANGES OR ADJUSTMENTS REQUIRED DURING ACTUAL CONSTRUCTION. NO REPRESENTATION IS MADE OR IMPLIED FOR ACCURACY.

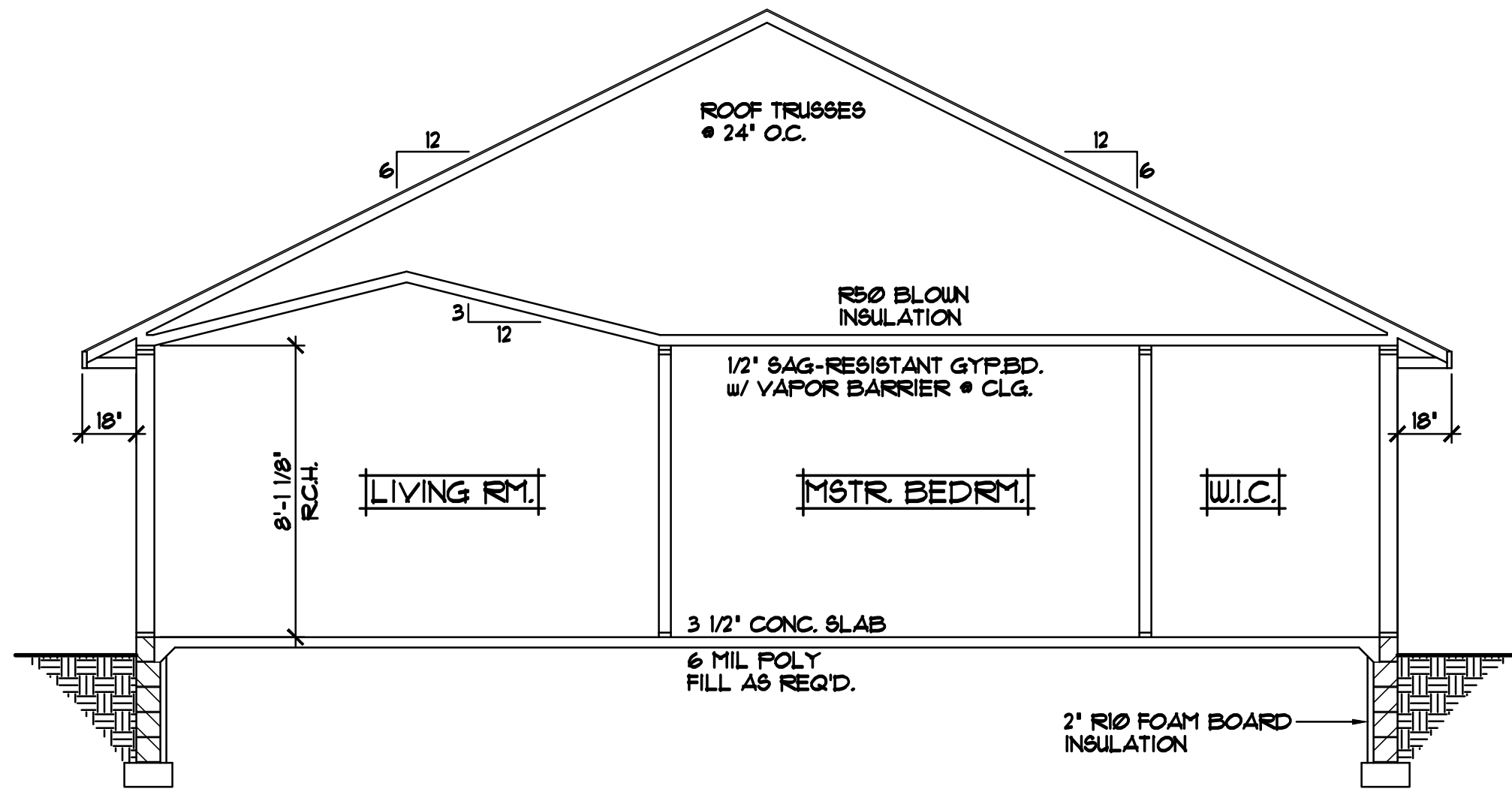
OFFICE: 763.757.5997
FAX: 763.757.4383
ANDOVER, MINNESOTA
WWW.CROIXDESIGN.COM



BUILT BY:
SEMLER HOMES

SHEET
3
of 5
CADD FILE #
17409

| REVISIONS |
|-------------------------|
| XXXXXX 0000 BY:XX |
| XXXXXX 0000 BY:XX |



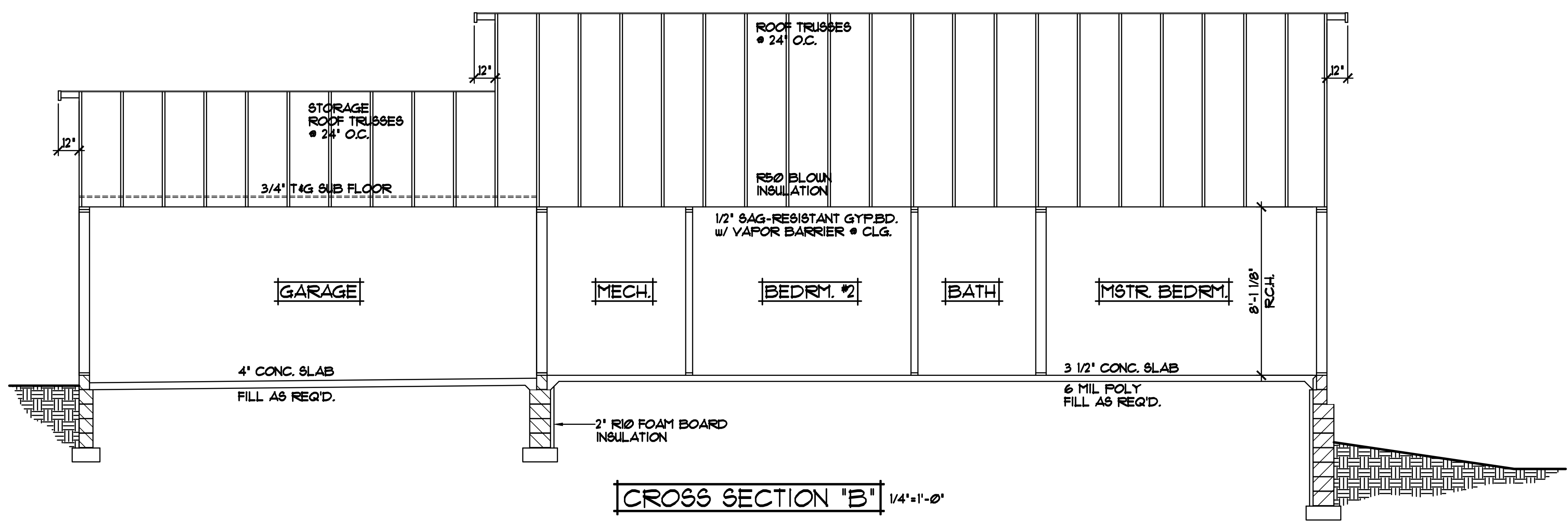
CROSS SECTION "A" 1/4"=1'-0"

- ROOF CONSTRUCTION:**
- PRE-MANUFACTURED ROOF TRUSSES-ENGINEERED BY SUPPLIER
 - 1/150 ROOF VENT AT SOFFITS, 1/150 VENT AT RIDGE
 - AIR CHUTE AT EACH TRUSS SPACE
 - 1/16" ROOF SHEATHING
 - 15# ROOFING FELT
 - ICE & WATER MEMBRANE APPLIED 24" PAST EXTERIOR WALL
 - 30 YEAR RAISED TAB SHINGLES

- SOFFIT / FASCIA:**
- 2x6 SUB-FASCIA
 - MAINTENANCE FREE FASCIA COVER
 - MAINTENANCE FREE VENTED SOFFIT

- WALL CONSTRUCTION:**
- TYVEK HOUSE WRAP
 - 1/16" OSB SHEATHING
 - 2x6 STUDS @ 16" O.C.
 - WINDOWS PER SPEC'S
 - R-21 F.G. BATT INSULATION
 - 4 MIL POLY VAPOR BARRIER
 - 1/2" GYPSUM BOARD

- SILL CONSTRUCTION:**
- 2x6 SILL PLATE & SEALER
 - 1/2" ANCHOR BOLTS @ 12" O.C.



CROSS SECTION "B" 1/4"=1'-0"

ALL HEIGHT CALCULATIONS FOR FOUNDATIONS ARE BASED ON THE USE OF FULL 8" HIGH BLOCK w/ 3/8" JOINTS. IF MODULAR BLOCK IS USED, CONTRACTORS SHOULD ADJUST HEIGHTS ACCORDINGLY.

SPECIAL NOTICE:
CROIX DESIGN AND DRAFTING, INC. ACCEPTS NO RESPONSIBILITY FOR ERRORS AND/OR OMISSIONS. THESE DRAWINGS ARE DESIGN CONCEPT ONLY. EVERY EFFORT HAS BEEN MADE TO PREVENT ERRORS, BUT THE USER MUST VERIFY ALL DIMENSIONS AND CONDITIONS BEFORE CONSTRUCTION. THE USER SHALL BE RESPONSIBLE FOR ANY CHANGES OR ADJUSTMENTS REQUIRED DURING CONSTRUCTION. NO REPRESENTATION IS MADE OR IMPLIED FOR ACCURACY.

OFFICE: 763.757.5997
FAX: 763.757.4383
ANDOVER, MINNESOTA
WWW.CROIXDESIGN.COM



BUILT BY:
SEMLER HOMES

SHEET
4
of 5
CADD FILE #
11409

| REVISIONS |
|---------------------------|
| XXXXXXXX 0000 BY:XX |
| XXXXXXXX 0000 BY:XX |

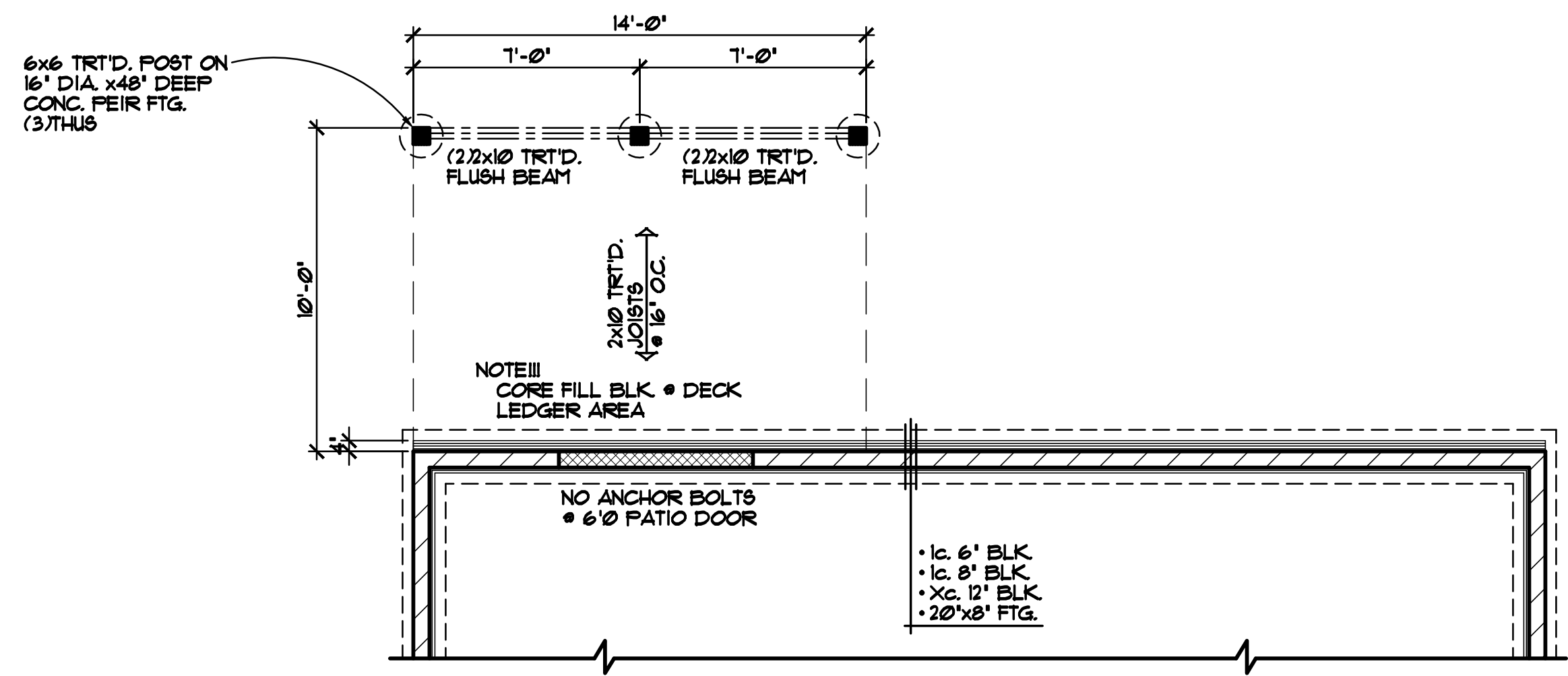
SPECIAL NOTICE:
CROIX DESIGN AND DRAFTING, INC. ACCEPTS NO RESPONSIBILITY FOR ERRORS AND/OR OMISSIONS. THESE DRAWINGS ARE DESIGN CONCEPT ONLY. EVERY EFFORT HAS BEEN MADE TO PREPARE THESE DRAWINGS ACCURATELY. HOWEVER, THE USER SHALL BE RESPONSIBLE FOR VERIFYING ALL DIMENSIONS AND CONDITIONS BEFORE CONSTRUCTION. THE USER SHALL BE RESPONSIBLE FOR ANY CHANGES OR ADJUSTMENTS REQUIRED DURING CONSTRUCTION. NO REPRESENTATION IS MADE OR IMPLIED FOR ACCURACY.

OFFICE: 763.757.5997
FAX: 763.757.4383
ANDOVER, MINNESOTA
WWW.CROIXDESIGN.COM

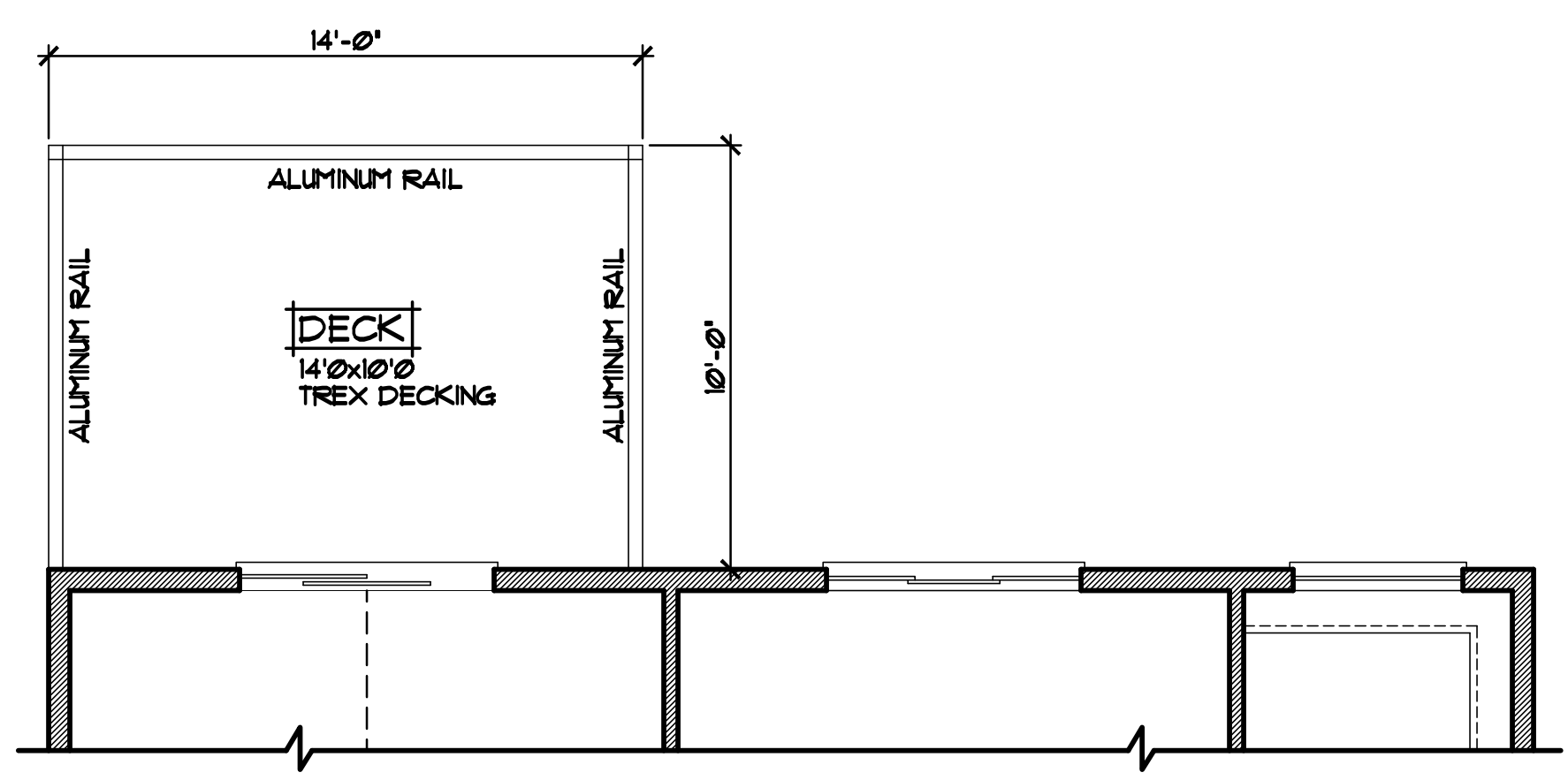
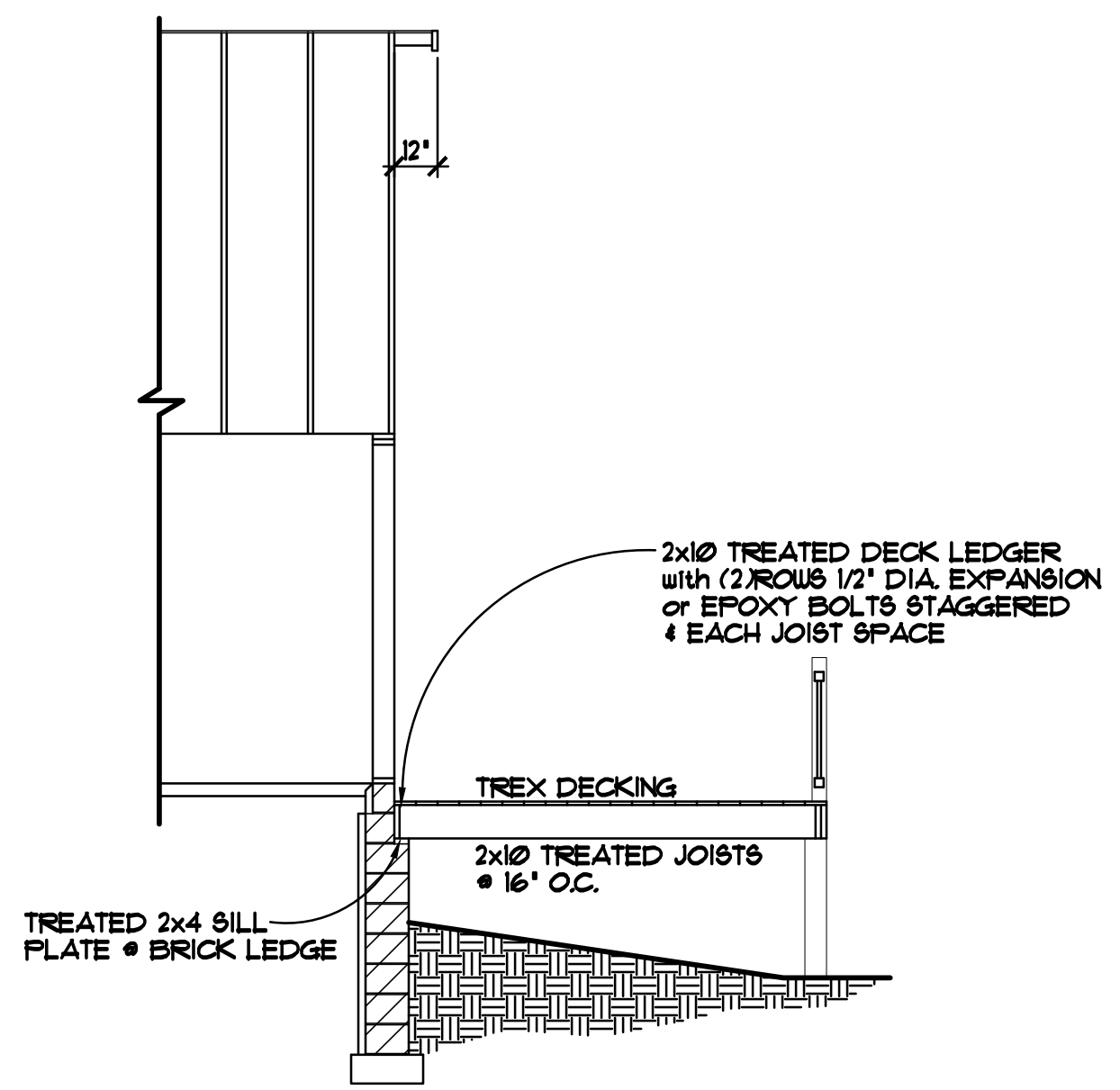
CROIX
DESIGN & DRAFTING, INC.

BUILT BY:
SEMLER HOMES

SHEET
5
OF 5
CADD FILE #
17409



DECK FOUNDATION PLAN 1/4"=1'-0"

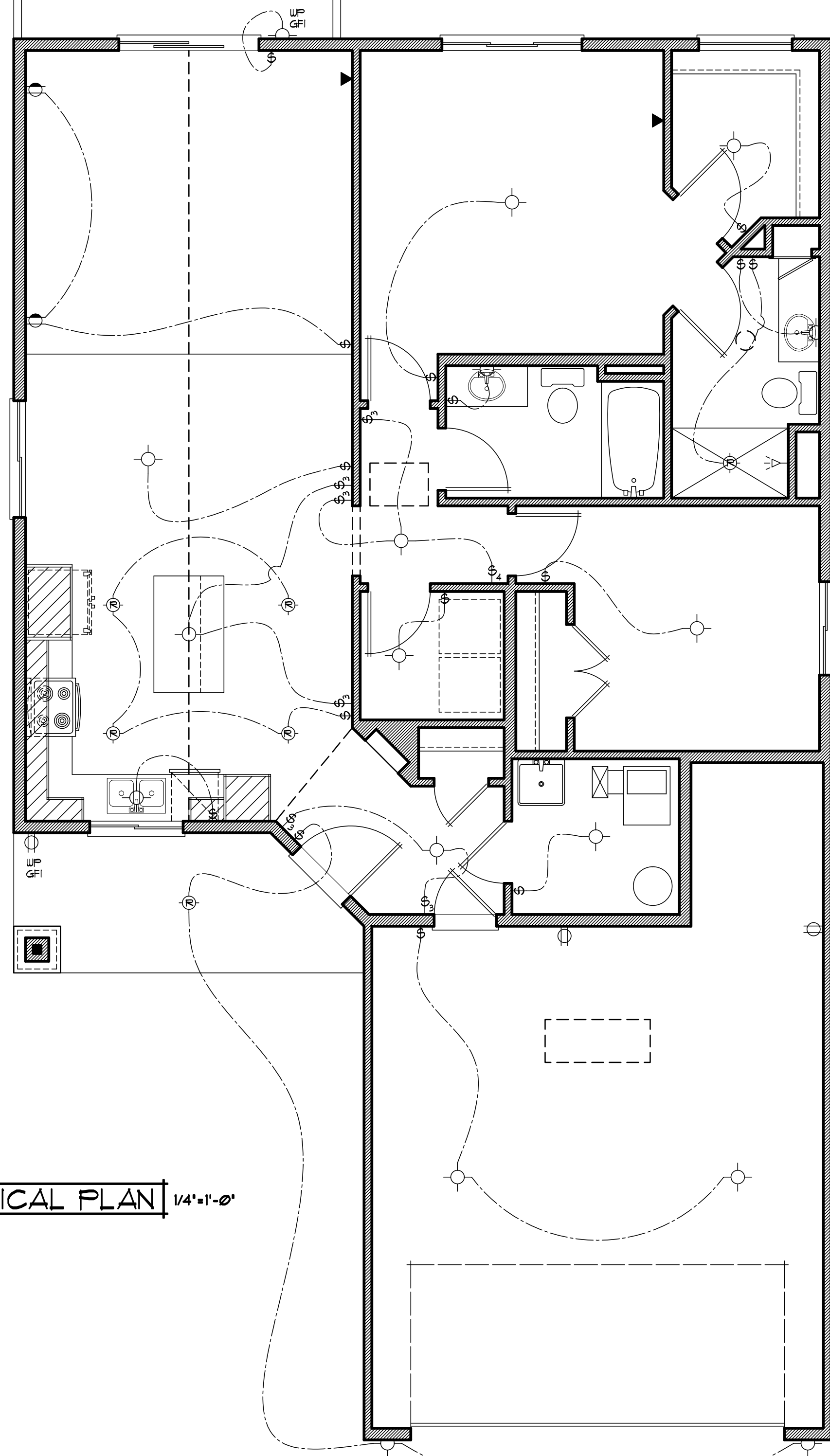


MAIN LEVEL DECK PLAN 1/4"=1'-0"

ALL HEIGHT CALCULATIONS FOR FOUNDATIONS ARE BASED ON THE USE OF FULL 8" HIGH BLOCK w/ 3/8" JOINTS. IF MODULAR BLOCK IS USED, CONTRACTORS SHOULD ADJUST HEIGHTS ACCORDINGLY.

| ELECTRICAL and MECHANICAL SYMBOLS | |
|--|----------------------------------|
| ▽ TELEPHONE JACK | ☯ EXHAUST FAN |
| ▼ TV/CABLE JACK | ○ LIGHT - CEILING FIXTURE |
| ⊕ SWITCH - SINGLE | ⊕ LIGHT - RECESSED FIXTURE |
| ⊕ ₃ SWITCH - THREE WAY | ⊕ LIGHT - RECESSED DIRECTIONAL |
| ⊕ ₄ SWITCH - FOUR WAY | ⊕ ^{FEN} LIGHT - PENDANT |
| ⊕ ^D SWITCH - DIMMER | — LIGHT - TRACK |
| ⊕ _{FC} SWITCH - FAN CONTROLS | — LIGHT - FLUORESCENT |
| ○ OUTLET - DUPLEX | ○ LIGHT - WALL MOUNTED |
| ○ OUTLET - DUPLEX SWITCHED | ⊕ ^{FD} FLOOR DRAIN |
| ○ ^{GF} OUTLET - GROUND FAULT | ⊕ ^{HB} HOSE BIBB |
| ○ ^{WP} OUTLET - WEATHERPROOF | ⊕ ^{GAS} GAS OUTLET |
| ○ OUTLET - FLOOR/SOFFIT MOUNT | ⊕ HVAC - SUPPLY VENT |
| ○ ₂₂₀ OUTLET - RANGE OR DRYER | ⊕ HVAC - RETURN VENT |
| ⊕ OUTLET - QUAD | |
| ⊕ ^{SD} SMOKE DETECTOR | |

ELECTRICAL PLAN 1/4"=1'-0"



| REVISIONS |
|-------------------------|
| XXXXXX 0000 BY:XX |
| XXXXXX 0000 BY:XX |

SPECIAL NOTICE:
CROIX DESIGN AND DRAFTING, INC. ACCEPTS NO RESPONSIBILITY FOR ERRORS AND/OR OMISSIONS. THESE DRAWINGS ARE DESIGN CONCEPT ONLY. EVERY EFFORT HAS BEEN MADE TO PREVENT ERRORS, BUT THE USER MUST VERIFY ALL DIMENSIONS, MATERIALS, AND CONDITIONS BEFORE CONSTRUCTION. THE USER SHALL BE RESPONSIBLE FOR ANY CHANGES OR ADJUSTMENTS REQUIRED DURING CONSTRUCTION. NO REPRESENTATION IS MADE OR IMPLIED FOR ACCURACY.

OFFICE: 763.757.5997
FAX: 763.757.4383
ANDOVER, MINNESOTA
WWW.CROIXDESIGN.COM



BUILT BY:
SEMLER HOMES

SHEET
X
OF X
CADD FILE #
17409