

ADAS SIM

The Air Dryer Automation System exclusively from CDA Systems:

- Optimize the efficiency of your air dryer system saving you money and unnecessary downtime.
- Reduce costly purge and re-pressurization scfm loss.
- Lower maintenance costs.
- Provide even wear on any multiple dryer system.
- Monitor and log the state of your air dryer system.



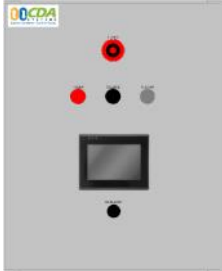
ADAS PRO

The ADAS system:

- Alternates the wear on the dryers by elapsed time or a dew point alarm condition.
- Capable to monitor flow, temperature, pressure and T.O.C.
- Dryers are sequenced using automatic fail open pneumatically operated process valves on the discharge of the dryers.
- The control solenoid valves (including filter/regulator and Lock Out Tag Out valve) are located in the ADAS control panel.
- Complete fail safe design. Upon certain alarm conditions or loss of air to the process valves or power to the controller, the valves will automatically open to allow operation of all dryers to prevent loss of flow and pressure.
- Depending on the level of ADAS controller selected the alarms can be sent to the BAS via a dry alarm contact or Ethernet.

Cost Effective and Reliable Operation

Contact us to place an order or for more information
Sales@cda-sys.com
(925) 667-3400



ADAS SIM

ADAS SIM

- Monitor Dryer 1 and 2 Status .
- 4.3" Color Touchscreen HMI
- NEMA Type 4 Steel Enclosure
- 110 VAC Power Cord Pre-wired
- Process On Switch
- Audible Buzzer Alarm and Red Alarm Light
- Two pneumatic solenoid valves for dryer control (includes filter/regulator and lock out tag out valve).
- (1) Isolated relay contact SPDT(NO/NC) for remote alarm notification
- HMI display includes:
 - Dryer 1 and 2 Status
 - Pneumatic Valve 1 and 2 Status
 - Alternation Set Points
 - Alarms, Current and Historical
- Options Include:
 - 4-20 mA inputs for display of process instruments
 - 4-20 mA outputs for process variable re-transmission

ADAS PRO

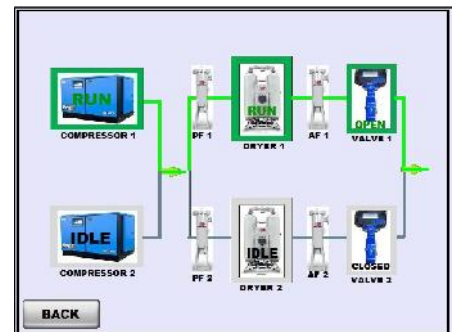


ADAS PRO

- Monitor Dryer Status (Up to 3 Dryers).
- 7" Color Touchscreen HMI
- NEMA Type 4 Steel Enclosure
- 110 VAC Power Cord Pre-wired
- Process On Switch
- Audible Buzzer Alarm and Red Alarm Light
- Two pneumatic solenoid valves for dryer control (includes filter/regulator and lock out tag out valve).
- 8 analog inputs available for display of process instruments, dew point, flow, pressure etc.
- (1) Isolated relay contact SPDT(NO/NC) for remote alarm notification
- HMI display includes:
 - Dryer Status
 - Pneumatic Valve Status
 - Process Variable Value (Dew Point, Pressure, Flow, Temperature from Separate Transmitter)
 - Alternation Set Points
 - Alarms, Current and Historical
- HMI can be configured to communicate with other devices through Ethernet, BACnet or Modbus
- Options Include:
 - Additional 4-20 mA inputs for display of process instruments
 - 4-20 mA outputs for process variable re-transmission

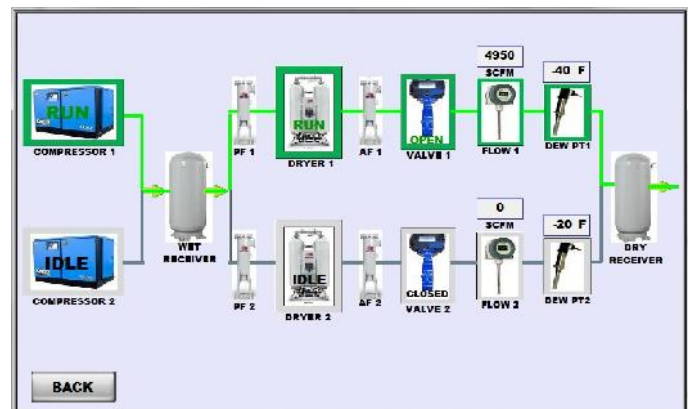
ADAS SIM

- 4.3" color touchscreen
- Simple intuitive touchscreen navigation and operation
- Main Screen has easy access to each of the other screens
- Process Screen shows the instrument readout and status of each piece of equipment, Green active, Grey standby, Red alarm.
- Alarm Screen with current alarms and alarm history
- HOA screen for manual valve actuation



ADAS PRO

- 7" color touchscreen
- Simple intuitive touchscreen navigation and operation
- Main Screen has easy access to each of the other screens
- Process Screen shows the instrument readout and status of each piece of equipment, Green active, Grey standby, Red alarm.
- Alarm Screen with current alarms and alarm history
- HOA screen for manual valve actuation
- Data screen for trending and logging of process conditions
- Ethernet connection for remote access and data retrieval



Contact us to place an order or for more information
 Sales@cda-sys.com
 (925) 667-3400