

a message from our leadership

November 25, 2014

Dear Friends,

For the past 13-years, QARI has been the "go-to agency" for the Asian and immigrant population in Quincy. We continue on this crucial mission because the needs of the community have only grown over time. QARI started out as an information and referral source for Quincy's Asian community. Since that time, we have grown in our service area and our services to include multiple locations offering many services.

We continue to partner with the Quincy Public Schools in offering youth leadership programs, middle school and high school mentoring programs, as well as school orientations for students. This year alone, we have served more than 564 students and families through the schools and in turn, students have contributed over 7,400 hours of community service.

Our English language classes continue to be fully enrolled by Asian and other non-English speaking adult students. Last year we helped to shape the futures of over 300 students by providing 9 classes over 4 levels. Stories like those of Muradha and others like him who want nothing more than to start a new life, learn English, and contribute back to their communities, are the reasons why QARI's programs are so crucial.

In addition to serving the Asian and immigrant population in Quincy, we empower people to give back through volunteer opportunities. Programs such as teaching English to elders or computer skills to new immigrants require multi-lingual skills. Of more than 360 volunteers last year, 90% were 1st or 2nd generation Asian immigrants. We continue to direct our work to not only address needs, but to also promote the strengths of our community.

The coming year will bring many positive changes to QARI and our services. We will continue to grow to serve the needs of our constituents. We will continue to work with our community partners to provide language-appropriate services without duplication. We will expand our outreach so that those who require services will always have a place to turn to for help.

Sincerely,


John Brothers
Executive Director


Gabriel Cheong, Esq.
Board President

board of directors



Frank Poon Brian Chan Denise Chan Kim Chan Abby Nguyen-Burke Lorraine Tse Joel Buenaventura Dr. Wan Wu Tony Liang


facts

The city's 1,274 English language learners face many barriers in their transition to a new school in a new country.



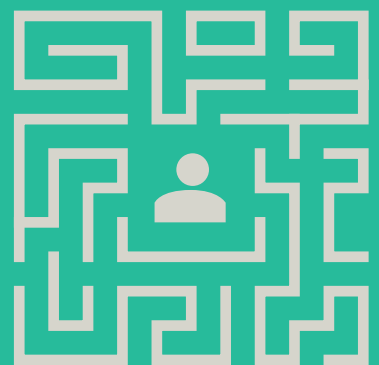
10% of Quincy residents are Asians struggling with English.

Limited English translates to limited career and education options.



outreach

Besides language, newcomers are confronted with a series of daunting systems which they must learn to navigate in order to thrive in the US.



Our community services desk provided **1,800** clients with multilingual information, referral to community resources and public assistance, and legal advice.

actions

High school volunteers mentored immigrant middle-schoolers for over **1,000** hours of homework help, English practice, and socially interactive games.

Our ESOL program taught more than **2,800** hours of English to **300** newcomers this year.

Our community services desk provided **1,800** clients with multilingual information, referral to community resources and public assistance, and legal advice.

actions

236 Youth ServiceCorps members volunteered **7,461** hours coordinating cultural festivals, computer and ESOL classes for elders, and a college preparation conference.

We partnered with 2 local businesses to provide **30** motivated students with English classes in the workplace during work hours

Last year, through parenting classes, multi-lingual orientations, and interpretive services, QARI supported **433** connections between families and schools.

impact

These youth now report being more confident, better equipped to face the social and academic challenges of high school, and better positioned to take leadership roles in the future.

As they've progressed, these students have documented the goals and accomplishments that their English has enabled them to achieve, such as voting in an election, increasing their earnings at work, and becoming a U.S. citizen.

These clients were able to access and learn about the resources they need to meet their day-to-day needs and maintain a stable life for their families, though they don't yet possess the language skills to do so on their own.

success stories

Iris Zheng, a freshman at Bentley University, found far more than a volunteer opportunity at QARI. She first came to QARI with the primary goal of helping other new immigrants adjust to American life even though she herself immigrated to Quincy from Fujian in 2009. Since then she has volunteered over 200 hours in the Youth ServiceCorps, with two out of her three years at QARI in a leadership role. She served as the Youth Board President in her senior year. On top of all this, Iris also taught a survival English course at QARI for Chinese seniors over 65. She loved teaching and is proud of the progress her students made.

Iris says that all her time spent at the Hancock Street office has lent her an appreciation of the essential service that QARI provide to Quincy's growing immigrant population. "I think it's a necessary place for Asian immigrants," she said. Through her friendships with QARI's office staff, Iris learned, for example, how significant it is for immigrants to have questions answered about bills that may be confusing to interpret. "I always tell my friends QARI is my second family," she says.

(Interviewed by Natalie Ornell)



Muradha was forced to flee his home country of Iraq after his work as a field coordinator for USAID and Relief International led to threats against his life and his family. He arrived in the US in January 2013 under the Special Immigrant Visa program, for those whose work on behalf of the U.S. government endangered their lives. He entered our evening ESOL program that September, and made rapid progress in just a year.

When he arrived, Muradha didn't speak a word of English, but his first attempts to communicate were met with smiles. As part of our program, he met regularly with our career advisor to articulate his goals and the steps toward them.

"I cannot live here without English," he says, "When I came here, I make a short plan and a long plan. My short plan is learn English. My long plan is learn to help my family stay here in this country." Muradha is here with his wife, Walaa, also in our program, and their four children.

This summer, we were proud when Muradha told us that he wouldn't be returning to our program: he has enrolled in a year-long certificate program at Universal Technical Institute, in Norwood, where he is learning to be a mechanic, as he and his advisor outlined in his career plan.



Aileen Lee, Psy.D., of South Shore Mental Health (SSMH) is one of our partners in the community who help us to meet the needs of families. A key component in QARI's information and referral program is our family outreach, which supports immigrant families in various capacities at our center and in the community. Since 2008, QARI and SSMH have partnered with educators in the Quincy Public Schools to assess the needs of students and their families and coordinate responses through the schools.

Besides the challenge of learning English in just a few years, loneliness, anxiety, homesickness, and intimidating cultural gaps make it very hard for immigrant teens to thrive in their new home and graduate from high school.

Parents work long hours and can't be present or available to help enough.

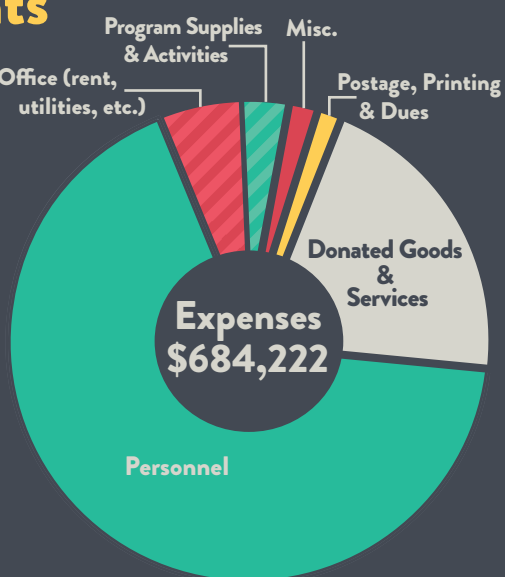
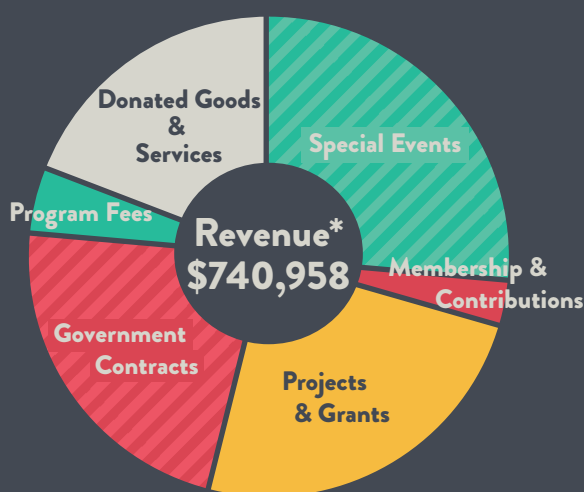
Initially focusing on supporting recent teenage immigrants with native language school orientations, tutoring and a safe place to belong, the team added Chinese language parenting classes, a Corps of interpreters and high school and middle school mentoring programs to the mix. Programs have spread to 15 schools. To support those with the greatest need, SSMH has grown its Asian team from 5 to 20 clinicians.



FY14 Financial Highlights

Statement of Financial Position

Assets	
Cash	\$369,462
Receivables and Prepaid Expenses	\$113,457
Board-Designated Reserve	\$150,000
Total Assets	\$632,919
Liabilities	
Total Liabilities	\$38,473
Net Assets	
Unrestricted Net Assets	\$335,757
Temp. Restricted Net Assets	\$258,689
Total Liabilities & Net Assets	\$632,919



*Revenue reflects operational revenue for FY14 and does not include future funding commitments.

Staff

- Executive Director** - John Brothers
- Community Development Director** - Christine Nguyen
- Finance Manager** - Ophelia Liu
- AmeriCorps VISTA** - Sydney Shillieto
- Event Coordinator** - Philip Chieng
- Youth Program Director** - Peter Tam
- Youth Program Coordinator** - Kristen Hammers
- AmeriCorps Ambassador of Mentoring** - Johnny Xu
- AmeriCorps Mass Promise Fellow** - Cindy Wong
- Adult Education Director** - Robert Sheppard
- Learn at Work Coordinator** - Mark Russell
- College and Career Advisor** - Olivia Yang
- Bilingual Outreach Specialist** - Elsa Chiu

QARI's mission is to foster and improve the social, cultural, economic and civic lives of Asian Americans and their families to benefit Quincy and its neighboring communities.



1509 Hancock St., Ste 209
Quincy, MA 02169
617.472.2200

quincyasianresources.org

Follow us!



FY14 Supporters

Individuals

\$1,000 & Greater

Gabriel Cheong, Esq.
Michele Edelsberg
Tony Liang
Bonnie Monahan
Abby Nguyen-Burke & Timothy Burke
Kaitzev Wei

\$500 - \$999

Brian Chan, LCSW
Jason Chan, Esq.
Kim & Benny Chan
State Treasurer Steve Grossman
Esther Lee

Representative Ronald

Mariano
Kevin McCusker
Donna Rubinate
Bonnie Sinn
Bao Trinh
Eugene Welch
Sandy Wong-Ng
Wan Chu Wu, Ph. D.
David Zou

\$250 - \$499

John & Suzanne Brothers
Senator Bruce Ayers
Paul Canavan
Representative Tackey Chan
Yau Chong
Jason Chou
Chien Chun Chen
Paul & Gerry Daly
Sharon Gamache
Councilor Douglas Gutro
Senator John F. Keenan
Nancy Lee
Clemens Leung
Frank Poon
Paul Shaw, LICSW
Kevin K. Song, DMD, P.C.
Maggie Wong

Up to \$249

Valentina Atanassova
Steven Bernardo
Tom Brady
Jeff Bretsch
Joel Buenaventura
Carmen Chan
Denise Chan
Siu Hay Chan
Margaret Cheung
Councilor Leland Cheung
Lily Chin
Frank Chin
Councilor Brad L. Croall

Gerry Daly
Ryan & Xiaobei Daniels
Joe DeSantis
Noel DiBona
Bill Doyle
Daniel Driscoll
Katrina Dwyer
Harold Emond
Councilor Joseph G. Finn
Brian Fragassi
Allan Fujita
Lok Yin Fung
Michael Gendron
Jill Goddard
Manuel Haendler
Beth Hallett
Janice Hoyt
Xiaoyin Huang
Zili Huang
Kathryn E. Hubley
Councilor Kirsten L. Hughes
Richard Hung, Ph.D.
Alex Jarvie
Donna Kelble
Krystal Kidney
George Knasas
Wai Leung Leung Kwok
Ronald Kyi
Anna La
Vincent Lau, Esq.
Tam Le
Fay Lee
Gene Lee
Mary Lee, Esq.
Synthia Lee
Van Paul Lee
John Leung
Tom Leung
Lee Liang
Melissa Lo
Donald Long
Tow Wei Lun
Jane Lundquist
Bonnie Ly
Patty Mak
Erlinda McGinty
Ann McKenzie
Juliana Ng
Ang Ngu
Joey Nguyen
Amanda Northrop
Minh Pham
Jeff Poirier
Cindy Porter
Sarah Poulin
Marc Quigley
Joseph Reardon
Mark Russell
Aliza Schneller

Thatsada Sethaphong
Deborah Slicis
Patricia Small
Charles Smith
Virginia Snell
Warren Su
David Tam
Minh Tan
Alicia Tenpow-Negeri
Henry Thach
Huy Thai
Vu Tran
Zhiling Trowbridge
Amy Truong
Emily Truong
Lorraine Tse
Theresa Tsoi
Paul Tully
Bich Vo
Luke Vu
Yufeng Wang
Lucille Wearre
Joel Werthman
Cho Win
Leverett Wing
Timothy Wismar
Herb Wong
Ivan Wong
Mofei Xu
Betty Yau
Paul Yee
Lou Ho Yin
Janette Yore
Mary Zheng

Organizations

\$50,000 and Greater

Asian Healthcare Foundation of Massachusetts
Department of Elementary and Secondary Education
State Street Foundation

\$25,000 - \$49,999

Comcast Foundation
Commonwealth Corporation
Eastern Bank Charitable Foundation
Quincy Medical Center Foundation
South Cove Community Health Center

\$10,000 - \$24,999

China Pearl Restaurant
City of Quincy
Deborah Munroe Noonan Memorial Fund
Harold Brooks Foundation
Quincy Medical Center
Quincy Public Schools
Tufts Medical Center

\$5,000 - \$9,999

JP Fuji Group
Kam Man Food
Mohegan Sun
South Shore Elder Services
South Shore Mental Health

\$1,000 - \$4,999

Arbella Insurance
Bank of Canton
C & C Company
Carney Hospital
Chang Shing Tofu
Deware Funeral Home
East West Bank
Eastern Nazarene College
Faxon Commons Apartments
Frederick Weber Charities
Harvard Pilgrim Health Care
Infinity Law Group
Keohane Funeral Home
PriceWaterhouseCoopers, LLP
Quincy College
Rockland Trust
Save the Harbor Save the Bay
Second Home ADHC, LLC
Senior Whole Health
South Cove Manor Nursing & Rehabilitation
South Shore Christian Academy
South Shore Hospital
TD Charitable Foundation

Tufts Health Plan
Tufts Health Public Plan Inc.
TVB USA
United Healthcare Community Plan

Boston Financial Data Services
Canton Musical Association
Caregiver Homes
Cathay Pacific Restaurant
Colonial Federal Savings Bank
Dairy Queen
Dunkin' Donuts
GIF Computer Services
Grandasia Bridal & Fashion
Hancock Tobacco Inc.
Harvard Vanguard Medical Associates

Home and Auto Appraisal
Home Depot
Hub Pen Company
Kappy's Liquor
Mass Mentoring Partnership
New York Life
Pho Countryside
Quincy Nursing and Rehabilitation Center
Robert White Associates, Inc.
Santander Bank
South Shore YMCA
Van Shabu Restaurant & Bar
Wal-Mart
The World We Want Foundation
YO! Bus

\$250 - \$499

Asian American Diabetes Center
Asian American Service Association
Boston Chinatown Neighborhood Center
Boston Web Power
Brewster Ambulance Service
Bulfinch Benefits
Central Real Estate
Citibank
Dowling Insurance
Dupliron
Far Eastern Fine Furniture
Hope Health
Ivy Dance
Manet Community Health Center

MD Management Company Co., LLC
Multicultural Home Care
Norfolk County Sheriff's Office and Correctional Center
Punjab Café
Roche Bros. Supermarket
Rotary Club of Quincy
South Shore Bank
Sunshine Travel
The Johnson Group

Up to \$250

AAA Southern New England
AmazonSmile Foundation
Boston University AWSHIP School of Social Work
The China Restaurant & Sports Bar
Adam Choi
City Retail LLC
Councilor Kevin Coughlin
David J. Donaghue Insurance
Dennis & Associates, P.C.
FBS Management
Gladewater National Bank
Hong Kong Eatery
Kagawa Sushi Bar & Restaurant
L'Attitude Art and Sculpture Gallery
Little Duck Thai Restaurant
Lux Dental Inc.
MAP for Health
Midtown Home Health Services
New England Comics
On-Time Payroll
Presidential Estates
Richard Soohoo Insurance Agency
Saheli Boston
Sedna Law, P.C.
Skoler & Dimarzio Orthodontics
The Tent Guys
Wollaston Lutheran Church

Service Locations



youth

We offered mentoring, tutoring, and other programs at our resource center and at local schools. Youth staff and volunteers worked all around the city.

adult ed

ESOL classes were taught at various locations around the city: at our resource center, in donated classroom space, and onsite at local businesses.

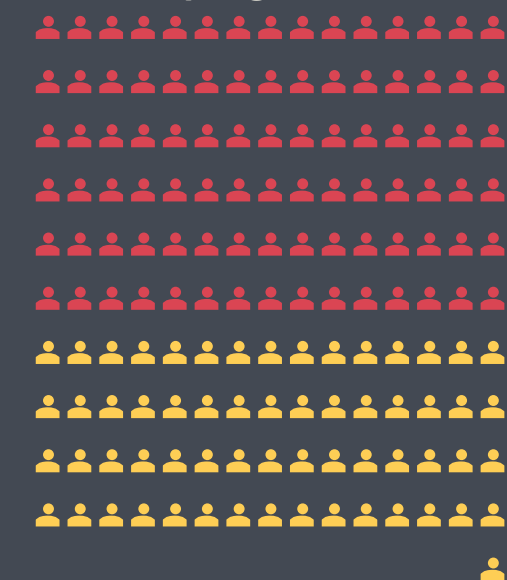
outreach

Services such as multilingual interpretation and translation, parenting classes, new parent orientation, and many others were offered at our offices and around the Quincy area.

Volunteers

None of what we have accomplished in FY14 would have been possible without the **367** youth and adults who volunteered their time, energy, and skills to our programs and events.

programs



adults



events



亞協服務中心

2014 Annual Report