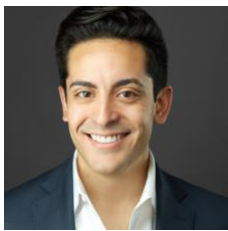


Impact Capital Managers Announces 2020 Mosaic Fellowship Winners

Program places graduate students from traditionally underrepresented backgrounds at leading private capital funds investing for positive impact and market-rate return

NEW YORK- April 21, 2020—Impact Capital Managers (ICM) is excited to announce the eight winners of its inaugural Mosaic Fellowship, a competitive program that gives talented first-year graduate students an opportunity to “learn the ropes” of private equity or venture capital impact investing through placement with an ICM member fund over one summer.

2020 ICM Mosaic Fellows



Fernando Carranza
ACHIEVE PARTNERS

MBA candidate, TOIGO Fellow
Kellogg School of Management,
Northwestern University



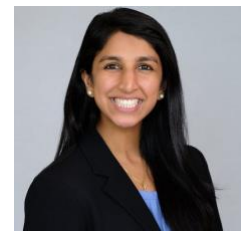
Jessica Chao
**COMMUNITY INVESTMENT
MANAGEMENT (CIM)**

MBA candidate
Stanford Graduate School of
Business



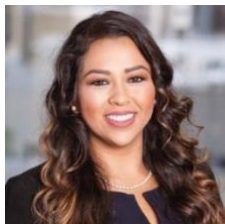
Sarah Gross
ARBORVIEW CAPITAL

MBA candidate
Yale School of Management



Neha Kukreja
**THE SOCIAL ENTREPRENEURS FUND
(TSEF)**

MBA/MPA candidate
MIT Sloan School of Management,
Harvard Kennedy School



Jessica Leon
**NEW MARKETS
VENTURE PARTNERS**

MBA candidate, TOIGO Fellow
MIT Sloan School of Management



Tiffany Leong
SJF VENTURES

MBA candidate
Yale School of Management



Sachi Twine
ECOSYSTEM INTEGRITY FUND

MBA candidate
Stanford Graduate School of
Business



Vera Song
ACHIEVE PARTNERS

MBA candidate
The Wharton School, University of
Pennsylvania

The 2020 Fellows will contribute to substantive workstreams at their host funds, from industry and field research, to due diligence, deal structuring, financial modeling, impact management and portfolio acceleration. ICM will convene the cohort virtually and provide mentorship, career path advice, lunch discussions with

friends-in-the-field, webinar “bootcamps” to sharpen skills, and an opportunity to share highlights from summer projects across the entire ICM network.

“We know that diverse teams tend to outperform their peers. We also acknowledge that there are systems-level obstacles and entrenched biases that work against access and mobility for diverse talent in the impact investing field,” said Annie Olszewski, ICM Director of Programs, who leads the Mosaic Fellowship.

Marieke Spence, ICM Executive Director, added that “this was a highly competitive application process and the candidates as a group were outstanding, underscoring ICM’s position that sourcing top diverse talent is *not* a pipeline problem. The challenge is accelerating the pathway and making the connections that count. ICM’s Mosaic Fellowship moves us closer to realizing a more equitable, inclusive, and effective impact investing marketplace, a vision for the future we share with many of our peers in the field.”

The Fellowship is the flagship initiative of ICM’s commitment to talent and diversity, a strategic priority for the organization. Other initiatives include a new job board aggregating career opportunities at ICM member funds, a Referred Talent Pool for members to share interest from compelling candidates, and valued partnerships with leaders in the field including the Toigo Foundation and the MBA Impact Investing Network & Training (MIINT) program. As part of ICM’s “Position, Goals & Commitments” on talent and diversity, the organization asks member funds for diversity data both at the investor level and at the portfolio company level.

The ICM Mosaic Fellowship is made possible in part through generous grant support from the Surdna Foundation, Ford Foundation, MacArthur Foundation and W.K. Kellogg Foundation.

About Impact Capital Managers

Impact Capital Managers is a not-for-profit network of private capital fund managers investing for market-rate return and meaningful impact, with a mission to accelerate the performance of its members and to promote the smart growth of the private capital impact investing marketplace. Membership is by invitation only. Today, the network includes 47 funds collectively representing more than \$11B in impact-focused capital.

The Impact Capital Managers Board of Directors includes general partners from Arborview Capital, Bain Capital Double Impact, Bridges Fund Management, Bronze Investments, City Light Capital, DBL Partners, HCAP Partners, Impact Engine, New Markets Venture Partners, Rethink, Small Business Community Capital, SJF Ventures, The Social Entrepreneurs Fund, University Ventures, and Wireframe Ventures. More information including a full roster of members can be found at www.impactcapitalmanagers.com.

Find open roles at ICM Member funds [here](#).

Learn more about the TOIGO Foundation.

Learn more about MIINT.

Contact:

Marieke Spence, Executive Director
mspence@impactcapitalmanagers.com

Annie Olszewski, Director, Programs
aolszewski@impactcapitalmanagers.com