

Dennis & Sherrill Bambauer present

**The World's Largest Dinosaurs:
The Science Behind Their Size**
May 5 - September 9, 2018

Meet a 60-foot dinosaur and try your hand at data gathering and games; investigate touchable fossils and models, and learn to excavate in the dig pit. This multi-media, immersive exhibition explores the latest dino science and goes beyond bones and into the bodies of these titans. Major support from U.S. Bank and Shasta Regional Medical Center. Additional support from Pamela Ikuta and Don Burton. This exhibition is organized by the American Museum of Natural History, New York (amnh.org) in collaboration with Coolture Marketing, Bogotá, Colombia.



Walk on the Wildside Animal Show
May 5 - Aug 19 Tuesday - Sunday
Aug 21 - Sept 2 Saturday & Sunday
11 am & noon

Marvel as an owl flies inches from your head. See a porcupine up close and personal. Watch a fox use its tail to balance on a narrow edge. Join us for a fun-filled educational wildlife show, and see animals showcasing their natural behaviors in a captivating and inspiring atmosphere.



Wings of Summer: Butterflies!
May 12 - July 8, 2018
10 am - 5 pm

Summer takes flight with *Butterflies!* – one of Turtle Bay's most beloved and popular exhibits. Delight in the delicate flutterings of these beautiful and important pollinators in a tranquil, enclosed garden. **Release an emerging butterfly!** When chrysalises are available, \$1 per person



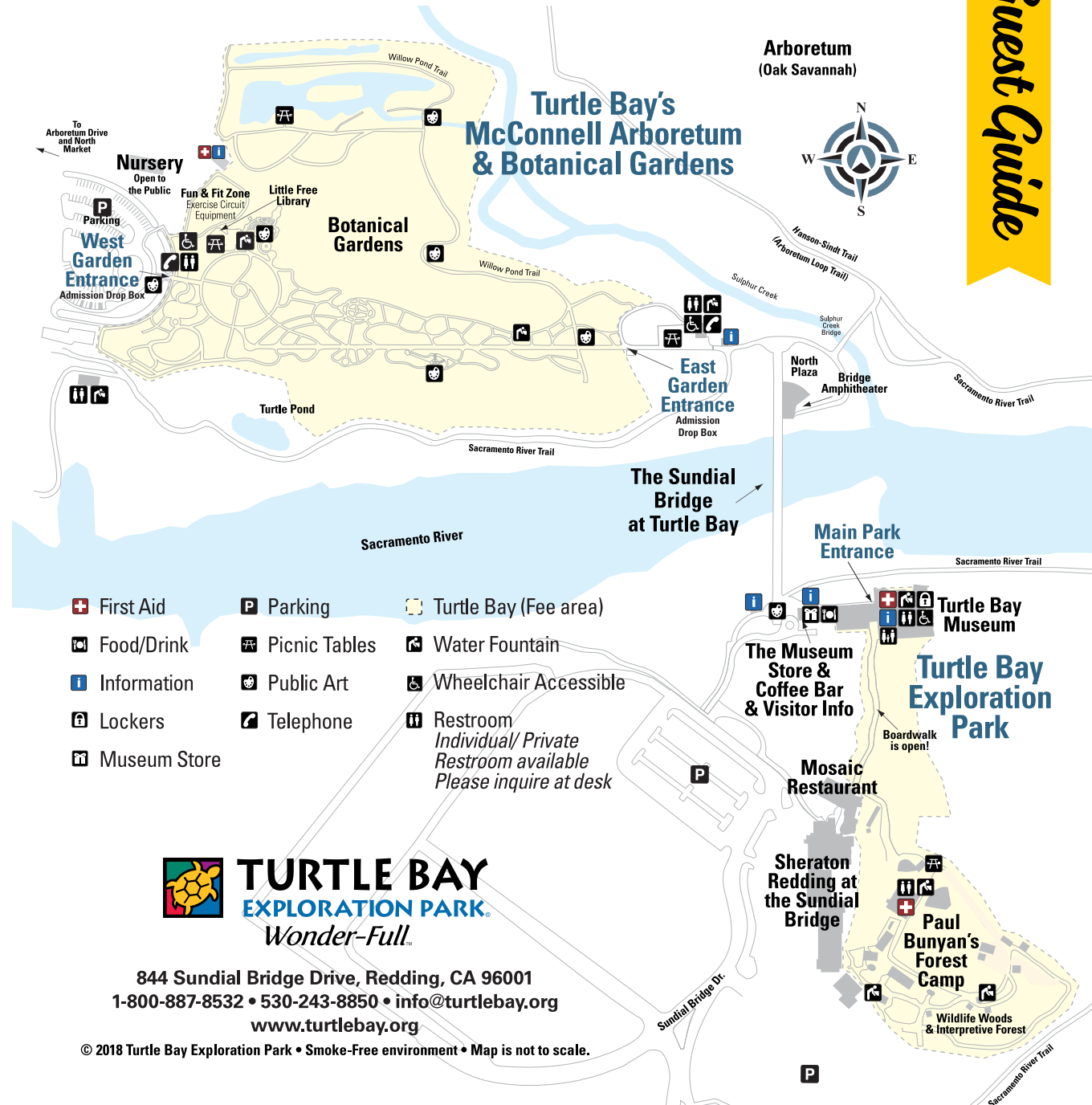
Parrot Playhouse
Open every day
Half hour after Park opens - 11:45 am & 1 pm - Park close
Walk through the interactive aviary featuring lorikeets, Australian birds seen in every color of the rainbow! Enjoy looking at these beautiful parrots and feeding them from your own hand as they land on your arm. We even have a Turaco bird usually only found in Africa.
Nectar cups \$1/each



TURTLE BAY
EXPLORATION PARK®

Wonder-Full™

Guest Guide



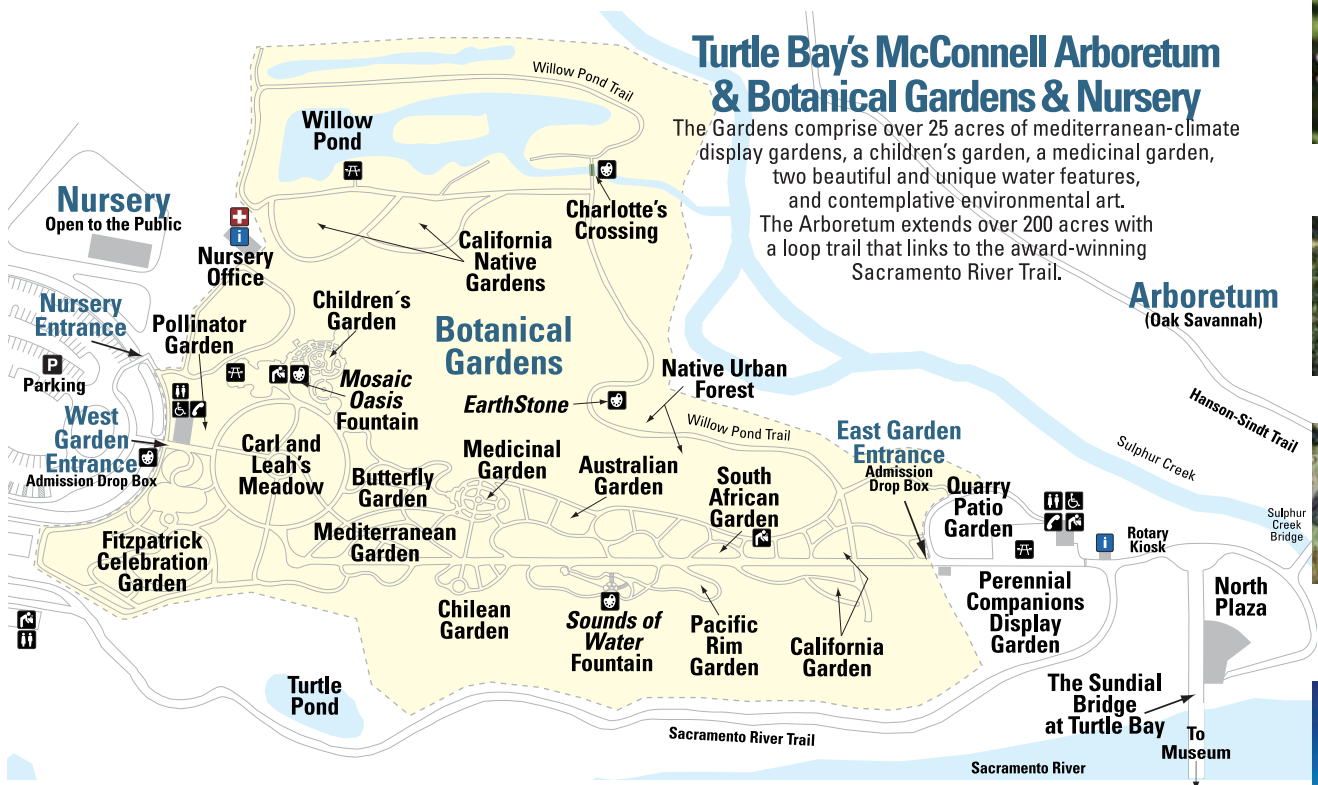
- First Aid
- Parking
- Turtle Bay (Fee area)
- Food/Drink
- Picnic Tables
- Water Fountain
- Information
- Public Art
- Wheelchair Accessible
- Lockers
- Telephone
- Restroom
*Individual/ Private Restroom available
Please inquire at desk*
- Museum Store



TURTLE BAY
EXPLORATION PARK®
Wonder-Full™

844 Sundial Bridge Drive, Redding, CA 96001
1-800-887-8532 • 530-243-8850 • info@turtlebay.org
www.turtlebay.org

© 2018 Turtle Bay Exploration Park • Smoke-Free environment • Map is not to scale.

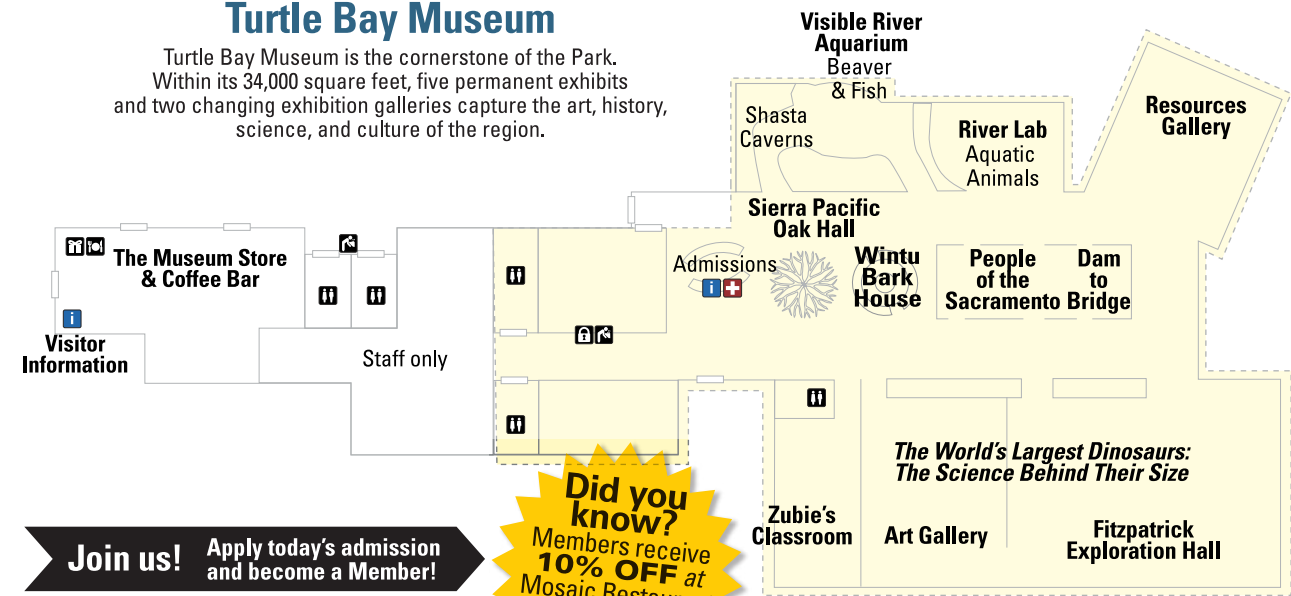


Turtle Bay's McConnell Arboretum & Botanical Gardens & Nursery

The Gardens comprise over 25 acres of mediterranean-climate display gardens, a children's garden, a medicinal garden, two beautiful and unique water features, and contemplative environmental art. The Arboretum extends over 200 acres with a loop trail that links to the award-winning Sacramento River Trail.

Turtle Bay Museum

Turtle Bay Museum is the cornerstone of the Park. Within its 34,000 square feet, five permanent exhibits and two changing exhibition galleries capture the art, history, science, and culture of the region.



Did you know?
Members receive **10% OFF** at Mosaic Restaurant next to the Sheraton Hotel!

Join us! Apply today's admission and become a Member!

Get discounts on merchandise, free or discounted admission at over 400 science centers and arboreta, and more! Visit the admissions desk for more information.



Botanical Gardens



Nursery



Earthstone Public Art, Gardens



Sundial Bridge



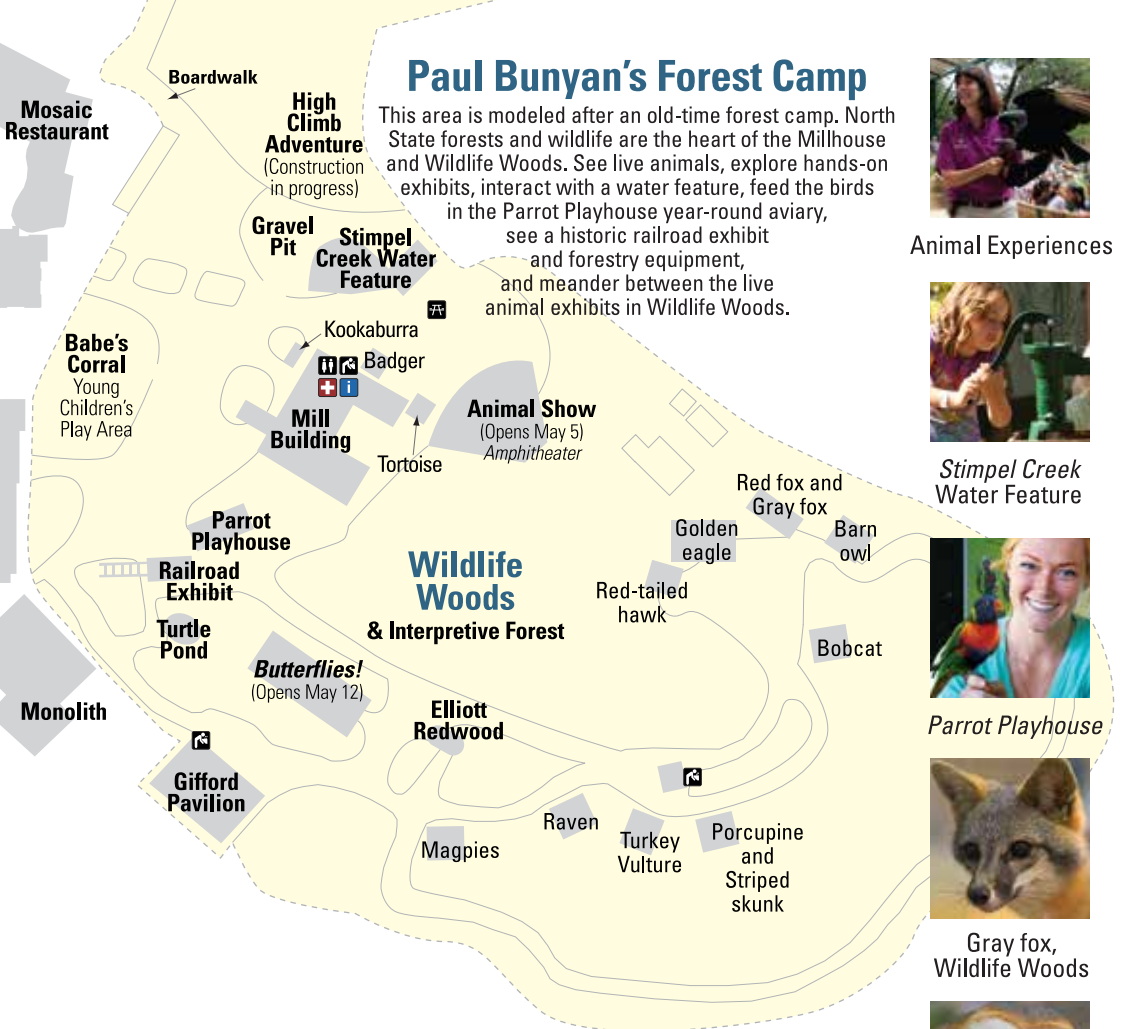
Aquarium



Art Gallery



Exploration in the Museum



Paul Bunyan's Forest Camp

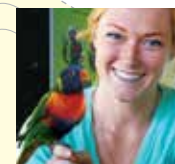
This area is modeled after an old-time forest camp. North State forests and wildlife are the heart of the Millhouse and Wildlife Woods. See live animals, explore hands-on exhibits, interact with a water feature, feed the birds in the Parrot Playhouse year-round aviary, see a historic railroad exhibit and forestry equipment, and meander between the live animal exhibits in Wildlife Woods.



Animal Experiences



Stimpel Creek Water Feature



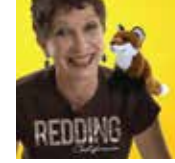
Parrot Playhouse



Gray fox, Wildlife Woods



Barn owl, Wildlife Woods



Museum Store & Coffee Bar

Programs & Events

Tri Counties Bank presents
Parrot Playhouse
Daily, Half hour
after Park opens
- 11:45 am & 1 - Park close

Aquatic Adventures
Every day, 2:30 pm

Dennis & Sherrill Bambauer present
Little Explorers
Thursdays, 10 am

Charlie Rabbit and His Friends
First Saturday every month
10 am

A Walk with the Horticulture Manager
Last Saturday every month
10 am

Visit turtlebay.org for a complete list of events & programs.

Follow us on



Hours

MUSEUM & FOREST CAMP SUMMER HOURS
Mon. - Fri., 9 a.m. - 5 p.m.
Sat. & Sun., 10 a.m. - 5 p.m.

BOTANICAL GARDENS
8 am - 7 pm/dusk

TURTLE BAY NURSERY OPEN TO THE PUBLIC
Fri. & Sat., 9 am - 1 pm

THE MUSEUM STORE & COFFEE BAR
Mon. - Sat., 8:30 am - 5 pm
Sunday, 9:30 am - 5 pm