



SOFT
AF

I DON'T NEED YOUR GOOD INTENTIONS

by Hannah Buske

resilience as a weapon wielded
against you time and
time again. how heartbreaking

to find strength as a
cage. people only see
what they want to believe.
trust me.

one day softness will break open the cage.
trust me.

softness like the gentle lapping
of the waves at your feet. softness
like a tender
breeze like a shy
ray of light.

to be soft is to be resilient.
trust me.

i am soft.
trust me.

i am resilient.
trust.
me.



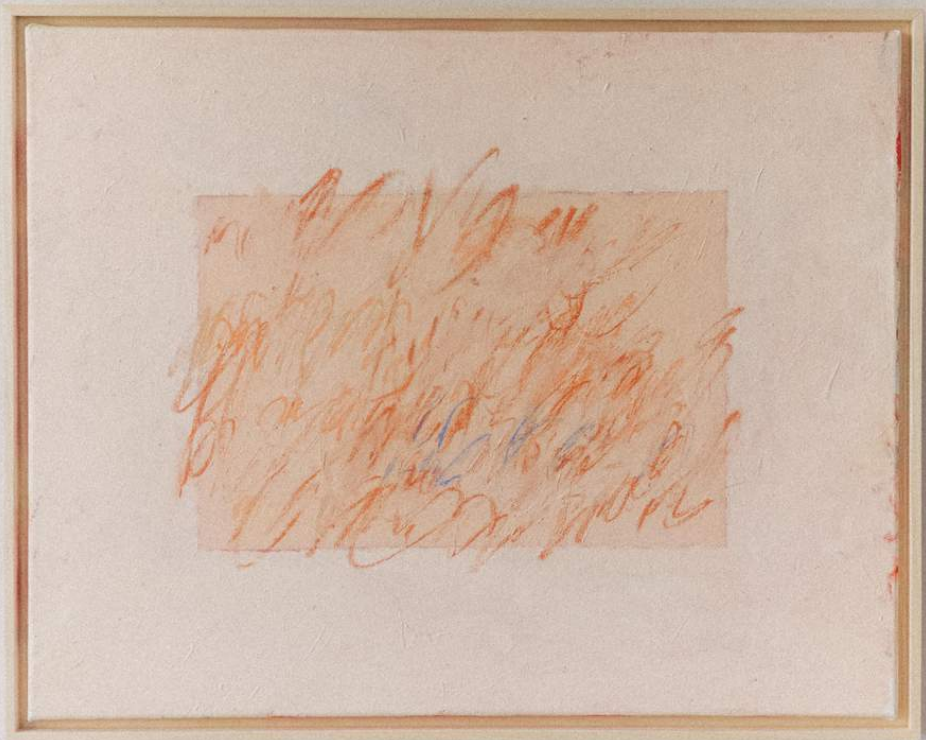




ANNA BAER

Lush Release no.1
80x170cm /// 2.6x5.6 feet
acrylic, ink, oil, and spray on raw cotton
2022





ANNA NÚÑEZ

All in All

76x61 cm /// 30x 24 inches

acrylic paint and chalk pastel on raw canvas

2022







ANNA NÚÑEZ

Begin

56 x 38 cm /// 22 x 15 inches

acrylic paint, colored pencil, and chalk pastel on raw canvas

2022







ANNA BAER

Lush Release no.1
150x150cm /// 4,9x4,9 feet
acrylic, ink, oil, and spray on raw canvas
2022

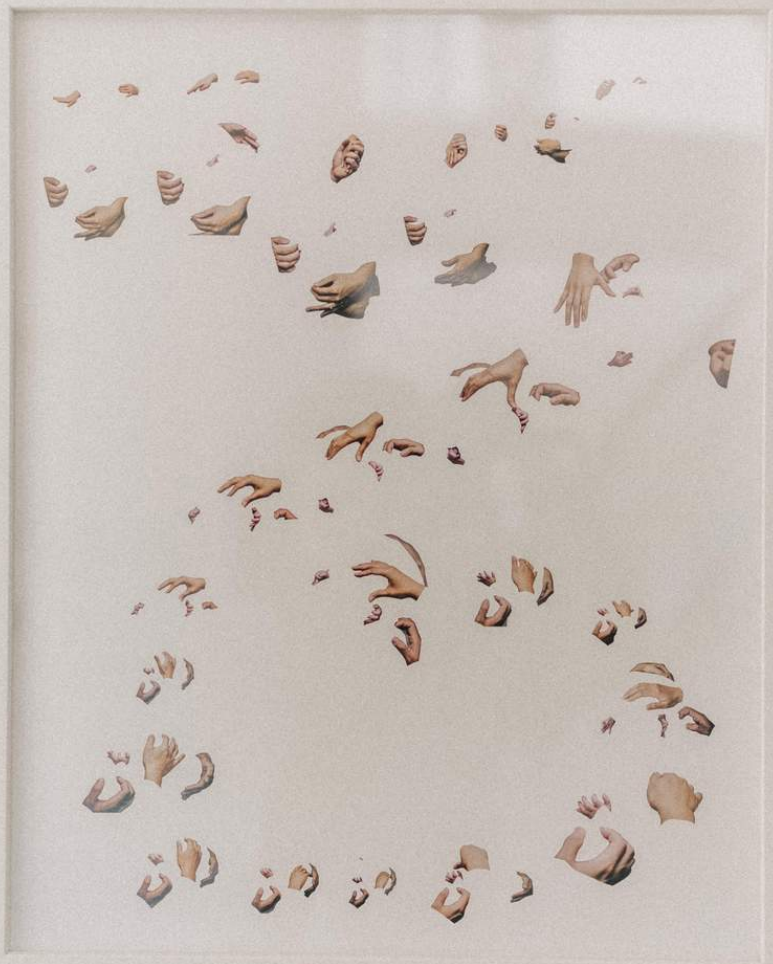






ALISON CHEN

Golden Hour Part I
41 x 52 cm /// 16 x 20 inches
Archival Pigment Print
2021







ALISON CHEN

Golden Hour Part 2
41 x 52 cm /// 16 x 20 inches
Archival Pigment Print
2021





how to empty your heart



LELAND LEICHMAN

How to Empty Your Heart
150 x 135 cm /// 4.9 x 4.4 feet
acrylic and oil on canvas
2022







ROSE REICHART

Expansion N°6
29,7 x 40,5 cm /// 12 x 16 inches
mixed-media on paper
2021







ROSE REICHART

Harmony N°2
29,7 x 40,5 cm /// 12 x 16 inches
mixed-media on paper
2021







ANNA BAER

Lush Release no.3
60 x 60 cm /// 2 x 2 feet
acrylic, ink, oil, and spray on raw canvas
2022







ANNA BAER

Lush Release no.4
60 x 60 cm /// 2x2 feet
acrylic, ink, oil, and spray on raw canvas
2022







ANTJE PFAHL

You reflect the cosmos
40x40 cm /// 13 x 13 feet
mixed media: gouache, pastels, watercolour pencil
2022







ANTJE PFAHL

The heart of the sun
40x40 cm /// 1.3 x1.3 feet
mixed media: gouache, pastels, watercolour pencil
2022





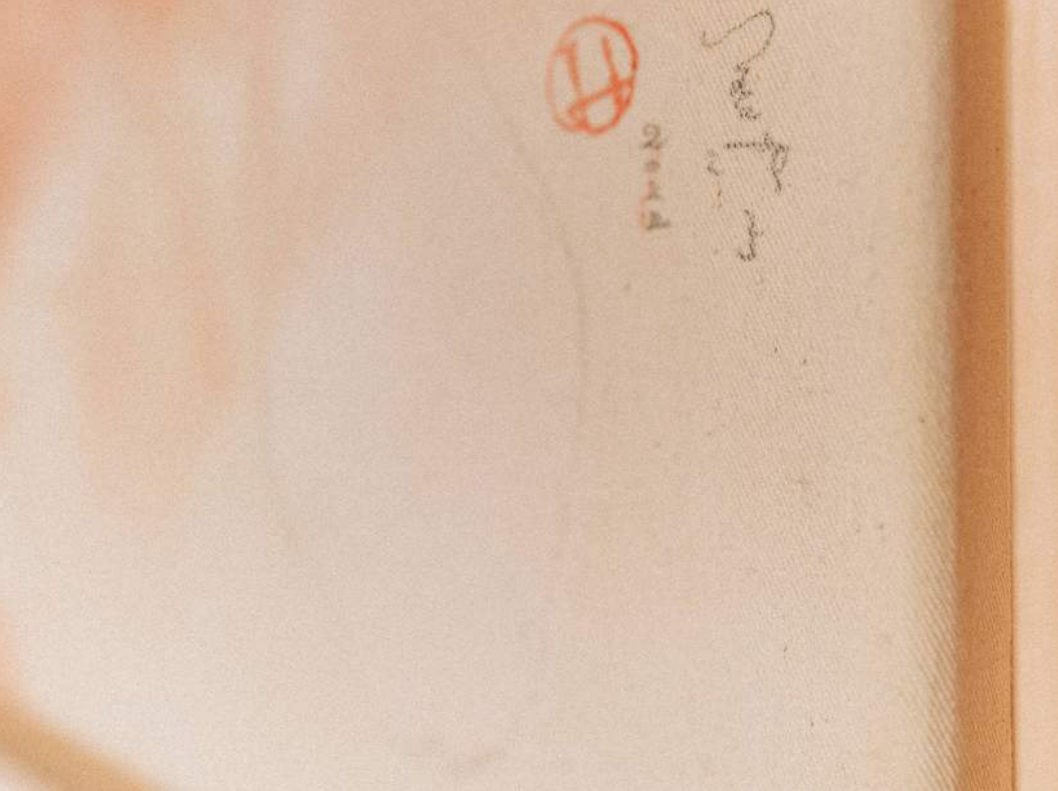


KATHARINA GÖTTE

Security
100x100cm /// 3.3X3.3 feet
oil, acrylic and spray paint
2022







MITSUKO HOSHINO

scant - magnolia

110 x 80 cm /// 3,6 x 2,6 feet

seashell pigment, clay pigment, hide-glue, acrylic, acryl-gouache, pencil, water on canvas

2022







KATHRIN NIKLAS

a feeling of light blue series
30x45cm
analoge photography
2021

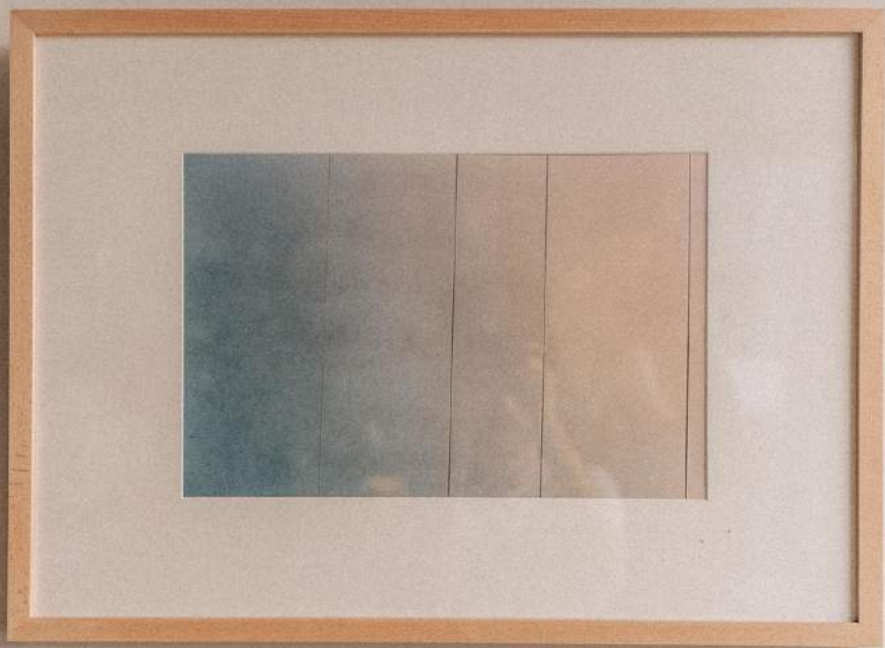






KATHRIN NIKLAS

a feeling of light blue series
30x45cm
analoge photography
2021





Curated by Anna Baer
photographs by DNA Collective

GROUP EXHIBITION

Anna Baer
Anna Núñez
Alison Chen
Leland Leichman
Rose Reichart
Antje Pfahl
Katharina Götte
Mitsuko Hoshino
Kathrin Niklas

SOFT
AF

On view at four locations in
Heidelberg, Germany
Nomad Weststadt
Nomad Neunheim
Coffee Nerd 1+2
July 23rd-October 1st 2022