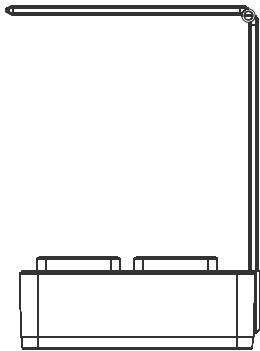


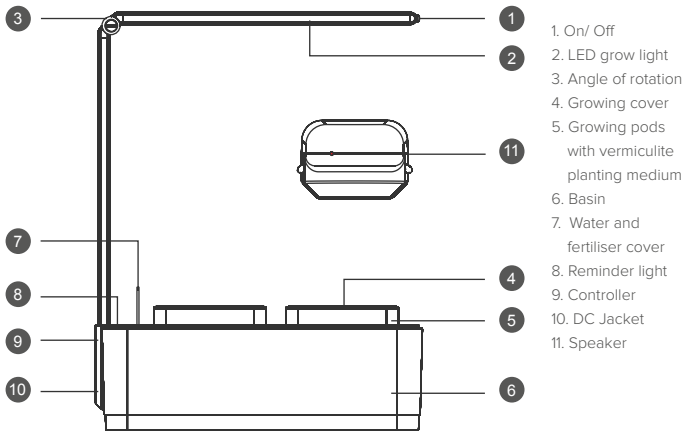
hydro patch

LED GROW LIGHT HERB AND SALAD GARDEN

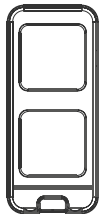


USER MANUAL

COMPONENTS



ACCESSORIES



Planting Basin



LED Grow Light
and Controller

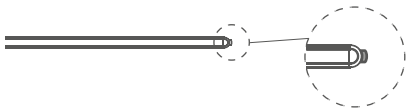


AC Adaptor



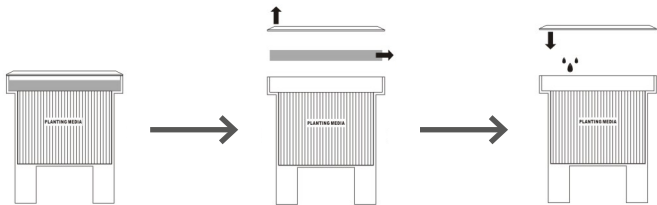
2 x Growing
Pods

LED GROW LIGHT FUNCTION



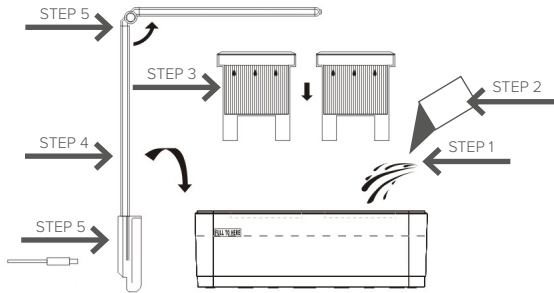
1. Press on/off to turn on the white light only, not suitable for growing.
2. Press on/off again to turn on the red light for growing mode.
3. Press on/off again to turn light off.

INSTRUCTIONS



1. Lift out the growing pods with the vermiculite growing medium.
2. Open the growing cover and foam pad and discard the foam pad.
3. Replace the growing cover back on to the growing pod with vermiculite growing medium.
4. Sow the seeds in the vermiculite planting medium, in the growing pods, by dropping 2 seeds into each grid.
5. For best results, after you sow the seeds, please shake the growing pod a little to ensure the vermiculite planting medium covers the seeds.

GROWING POD PREPARATION



1. Fill water to indicated water level in basin.
2. Add one sachet of fertiliser directly in to the water to encourage germination.
3. Put growing pods with the vermiculite planting medium and seeds into the basin.
4. Insert LED growing light into basin.
5. Adjust LED growing light angle to the correct line.
6. Insert AC Adapter connector into AC jack.

REMINDER TO ADD WATER



1. Red light flashes.
2. Add water to water level in basin, indicated when the red light will stop flashing.
3. Add one sachet of fertiliser directly in to the water to encourage plant growth.

POWER CHECK



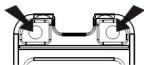
1. Green light will stay on
2. If no green light, check AC Adaptor connection

LED GROWING LIGHT



- We recommend;
- 4-6 hours per day in a room with natural light,
 - 8-10 hours per day in a room with no light.

TO ADD WATER AND FERTILISER



1. Open the cover
2. Add water to water level in basin, indicated when the red light will stop flashing
3. Add one sachet of fertiliser directly in to the water to encourage faster growth

SECOND PLANTING/ REUSE

1. Take out all plants and vermiculite growing medium, clean basin and growing pods (do not immerse LED grow light in water).
2. Prepare for planting with new vermiculite planting medium and seeds.
3. Repeat the growing steps.

You can also transplant some plants with soil directly in to the growing pods, first empty out the vermiculite growing medium.

POINTS OF NOTE

1. Avoid water flow into the controller.
2. Fill water to level indicated in the basin, no more water should be added, do not overfill.
3. Position hydropatch™ LED grow light herb and salad garden in a well lit position.
4. Place in an area where the hydropatch™ LED grow light herb and salad garden will not be disturbed.

GROWING TIPS

1. Plants need nutrition, when you fill and refill with water add one sachet of fertiliser into the water which will encourage germination and help the plant to grow.
2. Plants need sunshine, move plants that require a lot of sunlight into direct sunlight on a windowsill.
3. The seed germination result is based on the quality of your seeds.
4. Supply enough light, air, water, fertiliser and vermiculite planting medium.

Soluble Plant Feed 20:20:20 + TE

SAFETY AND STORAGE INFORMATION

STORE IN ORIGINAL CONTAINER IN COOL, DRY CONDITIONS
AWAY FROM CHILDREN AND PETS.

WASH HANDS AFTER USE.

PRODUCT HAS UNLIMITED SHELF LIFE.

Product Code: HPP011
Rapid Products (UK) Ltd
hydropatch.co.uk
Made in China