

hydro patch

600 GROW LIGHT KIT



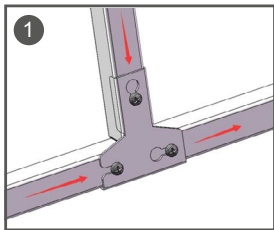
USER MANUAL

COMPONENTS

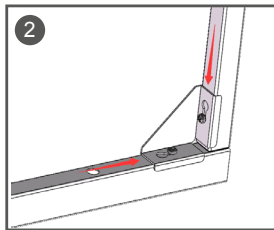
- 1 x Top crossbar
- 2 x Upright legs
- 2 x Foot pieces
- 2 x Corner brackets
- 2 x Leg brackets
- 1 x T5 fluorescent light fixture

Recommended Tools Phillips Screwdriver (not included)

INSTRUCTIONS



Slide the leg brackets on to the foot pieces and the leg uprights, then fix screws in place.

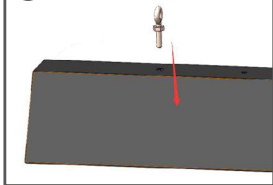


Set the top crossbar onto a workbench or the floor with the screws facing up. Slide corner brackets into the other end of the legs and the top crossbar, then fix screws in place.

3

Stand up the frame.
We recommend positioning it over a chair or other elevated surface in preparation for hanging your light fixture.

4

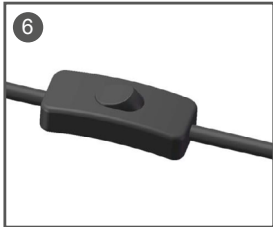


Screw the eye bolts into the hole which is on the top of the fixture.

5

Set the light fixture under the top crossbar and pull down the hanger cables. Attach the eye bolts on the light fixture to the hangers on the suspension cables.

6



You can control the fixture with the ON/OFF switch.



You also can regulate the height of your light fixture by using the pull cord and locking mechanism.

For replacement bulbs please use a 24 Watt daylight (propagation) T5 fluorescent tube. We recommend Philips Lighting MASTER TL5 HO 24W/827 SLV/40.

Great for use with the hydropatch™ garden (sold separately).

Product Code: HPP001
Rapid Products (UK) Ltd
hydropatch.co.uk
Made in China