



30-SS1203A / 30-SS1201S

**12,000 LB CAPACITY
SCISSOR LIFT**



INSTALLATION AND SERVICE MANUAL

CONTENTS

Product Features and Specifications	1
Installation Requirement	3
Steps of Installation	4
Exploded View	19
Test Run	24
Operation Instruction	25
Maintenance	26
Trouble Shooting	28
Parts List	29

I. PRODUCT FEATURUES AND SPECIFICATIONS

Professional Alignment Scissors Lift

Model 30-SS1203A

- Electric- air control system, safety self-lock mechanism
- 2-Dual synchronous cylinders are applied to assure the lifting level on both platforms
- Skid proof diamond [platforms](#)
- Integrated rear slip-plates
- Heavy duty design, fit for a wide range of vehicle car to van and light truck.
- Optional Jack (with hand pump/air-operated hydraulic pump)
- Optional Turnplate

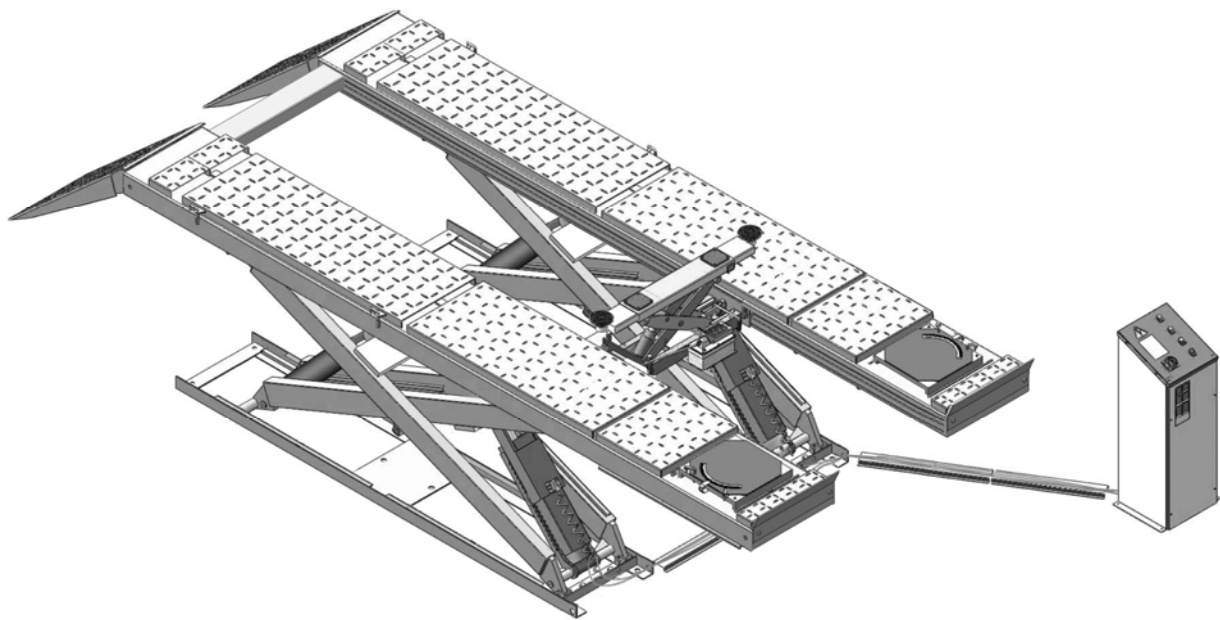


Fig. 1

MODEL 30-SS1203A SPECIFICATIONS

Model	Lifting Capacity	Lifting Height	Min. Height	Lifting Time	Overall Length (Inc.Ramps)	Runway Length	Overall Width	Runway Width	Distance Between Baseplate	Gross Weight	Motor
30-SS1203A	5.5T 12000 lbs	1870mm 73 5/8"	300mm 11 3/4"	58S	6495mm 255 3/4"	5018mm 197 1/2"	2290mm 90 1/8"	625mm 24 5/8"	955mm 37 5/8"	2320Kg 5105 lbs	4.0HP

Professional non-alignment Scissors Lift

Model 30-SS1201S

- Electric- air control system, safety self-lock mechanism
- Dual synchronous cylinders are applied to assure the lifting level on both platforms
- Sand resistance platforms to avoid skidding
- Heavy duty design, fit for a wide range of vehicle car to van and light truck
- Optional Jack (with hand pump/air-operated hydraulic pump)

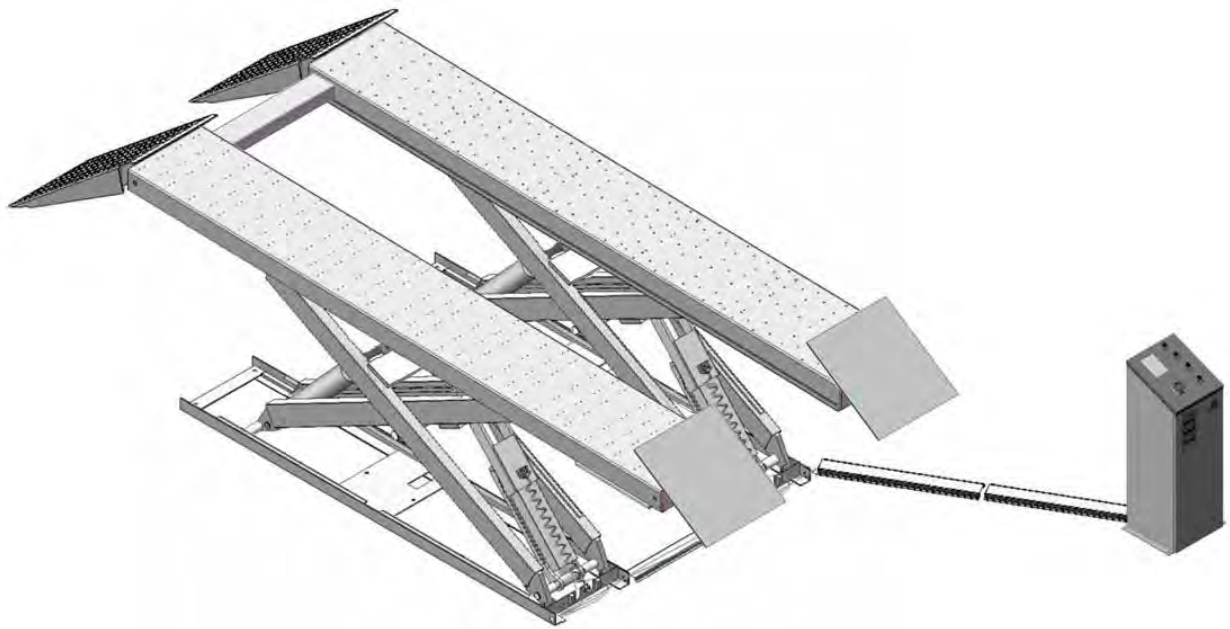


Fig. 2

MODEL 30-SS1201S SPECIFICATIONS

Model	Lifting Capacity	Lifting Height	Min. Height	Lifting Time	Overall Length (Inc. Ramps)	Runway Length	Overall Width	Runway Width	Distance Between Baseframe	Gross Weight	Motor
30-SS1201S	5.5T 12000 lbs	1870mm 73 5/8"	300mm 11 3/4"	58S	6495mm 255 3/4"	5018mm 197 1/2"	2290mm 90 1/8"	625mm 24 5/8"	955mm 37 5/8"	2058Kg 4528 lbs	4.0HP

II. INSTALLATION REQUIREMENT

A. TOOLS REQUIRED

- ✓ Rotary Hammer Drill (Φ19, Φ10, Φ4,)



- ✓ Hammer



- ✓ Level Bar



- ✓ English Spanner (12")



- ✓ Ratchet Spanner With Socket (28#)



- ✓ Wrench Set (8#, 14#, 15#, 17#, 19#)



- ✓ Carpenter's Chalk



- ✓ Screw Sets



- ✓ Tape Measure (7.5m)



- ✓ Pliers



- ✓ Lock Wrench



- ✓ Grease gun



Fig. 3

B. SPECIFICATIONS OF CONCRETE

Specifications of concrete must be adhered to the specification as following.
Failure to do so may result in lift and/or vehicle falling.

1. Concrete must be thickness 100mm minimum and without reinforcing steel bars, and must be dried totally before the installation.
2. Concrete must be in good condition and must be of test strength 3,000psi (210kg/cm²) minimum.
3. Floors must be level and no cracks.

C. POWER SUPPLY

The electrical source must be 3KW minimum. The source cable size must be 2.5mm² and in good condition of contacting with floor.

III. STEPS OF INSTALLATION

A. Location of Installation

Check and insure the installation location (concrete, layout, space size etc.) is suitable for lift installation.

1. For Standard Installation: On surface installation

1.1 30-SS1201S/30-SS1203A

On surface installation foundation (See Fig. 4).

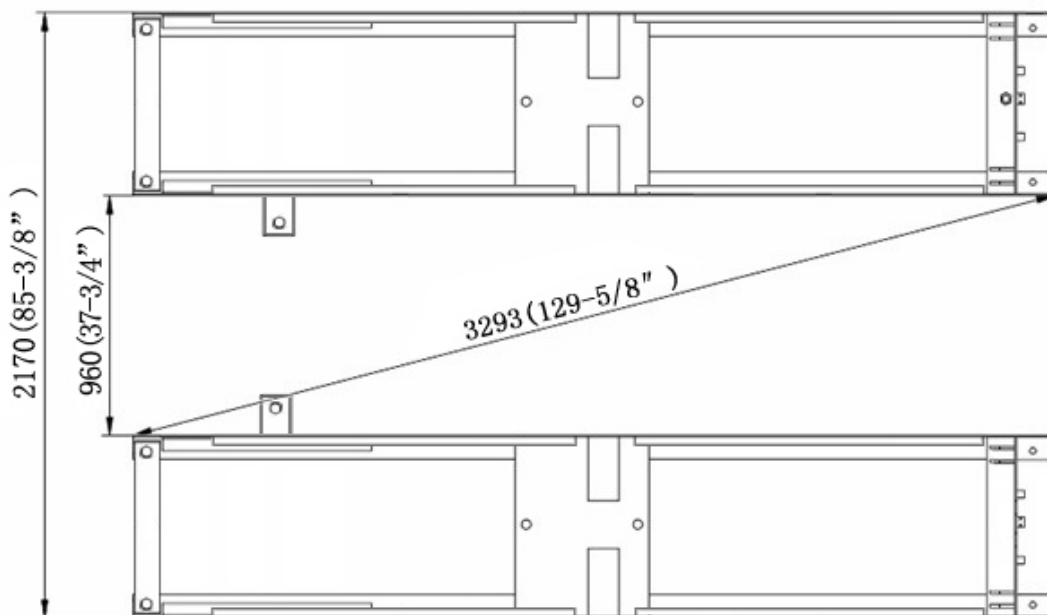


Fig. 4

1.2 Illustration of scissors lift **30-SS1201S** on surface installation (See Fig.5).

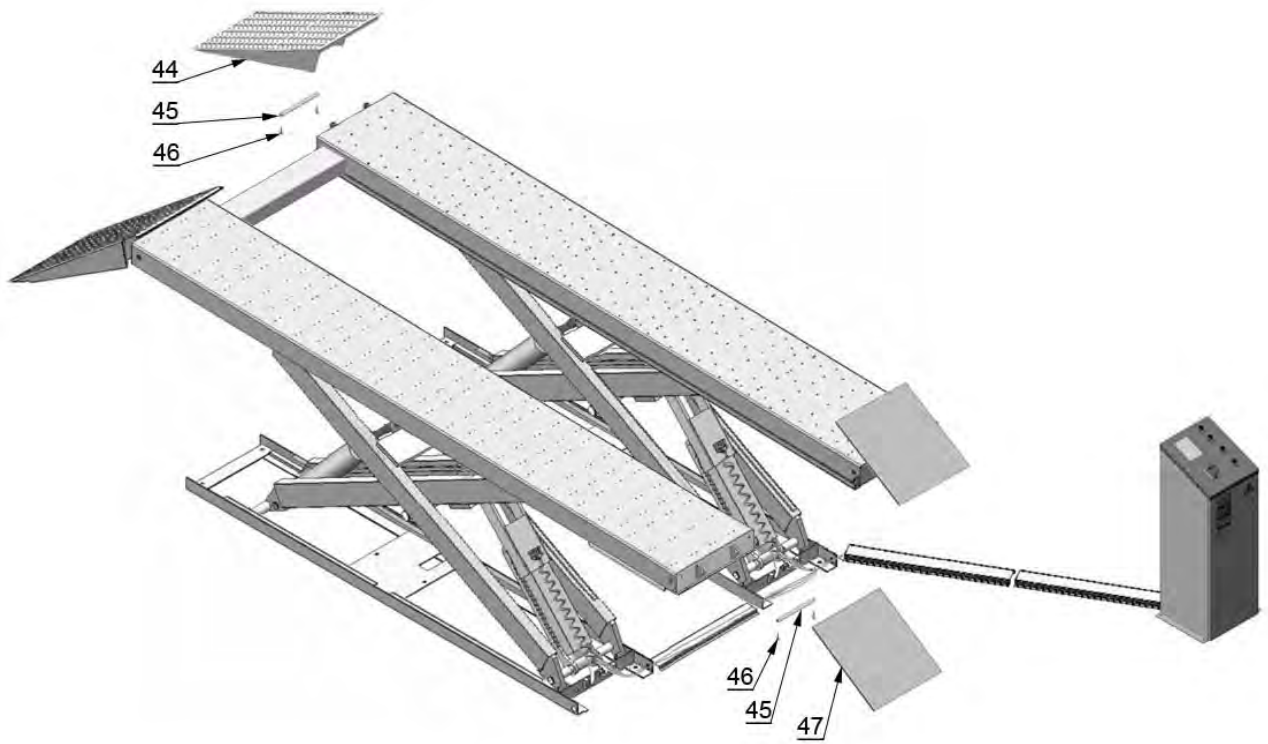


Fig. 5

1.3 Illustration of scissors lift **30-SS1203A** on surface installation (See Fig.6).

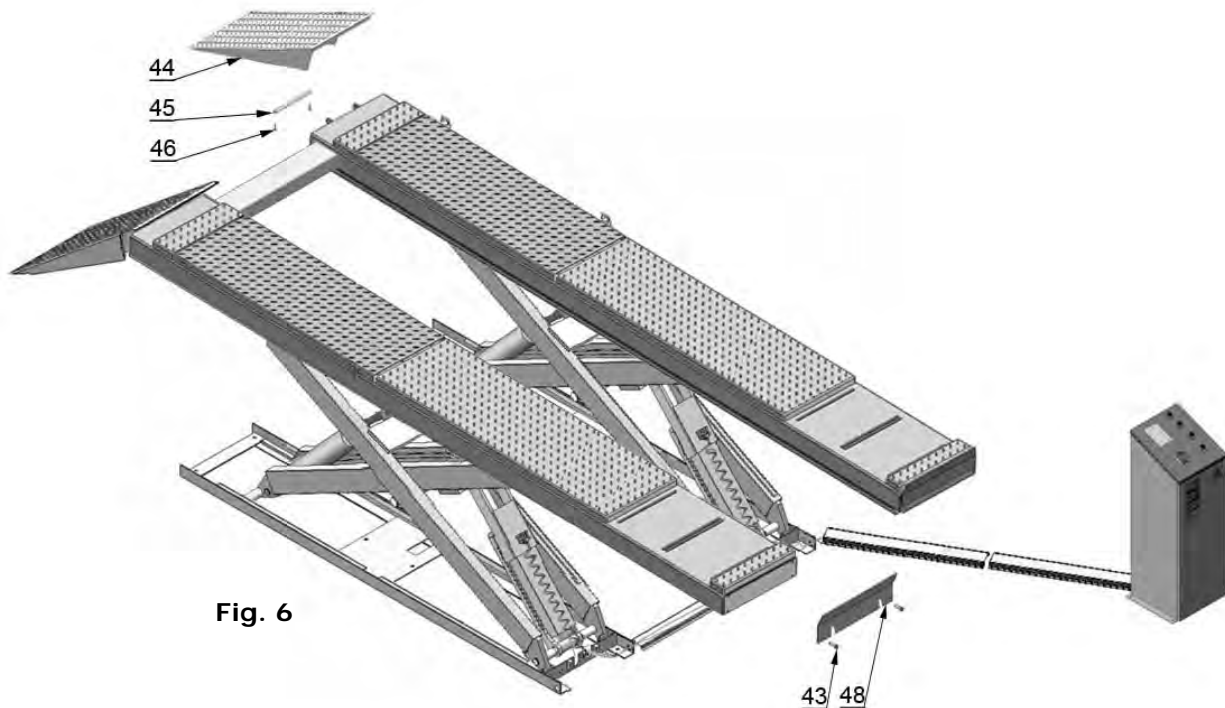


Fig. 6

2. For Optional Installation: Flush mount installation

2.1 Flush mount installation foundation (Fig.7).

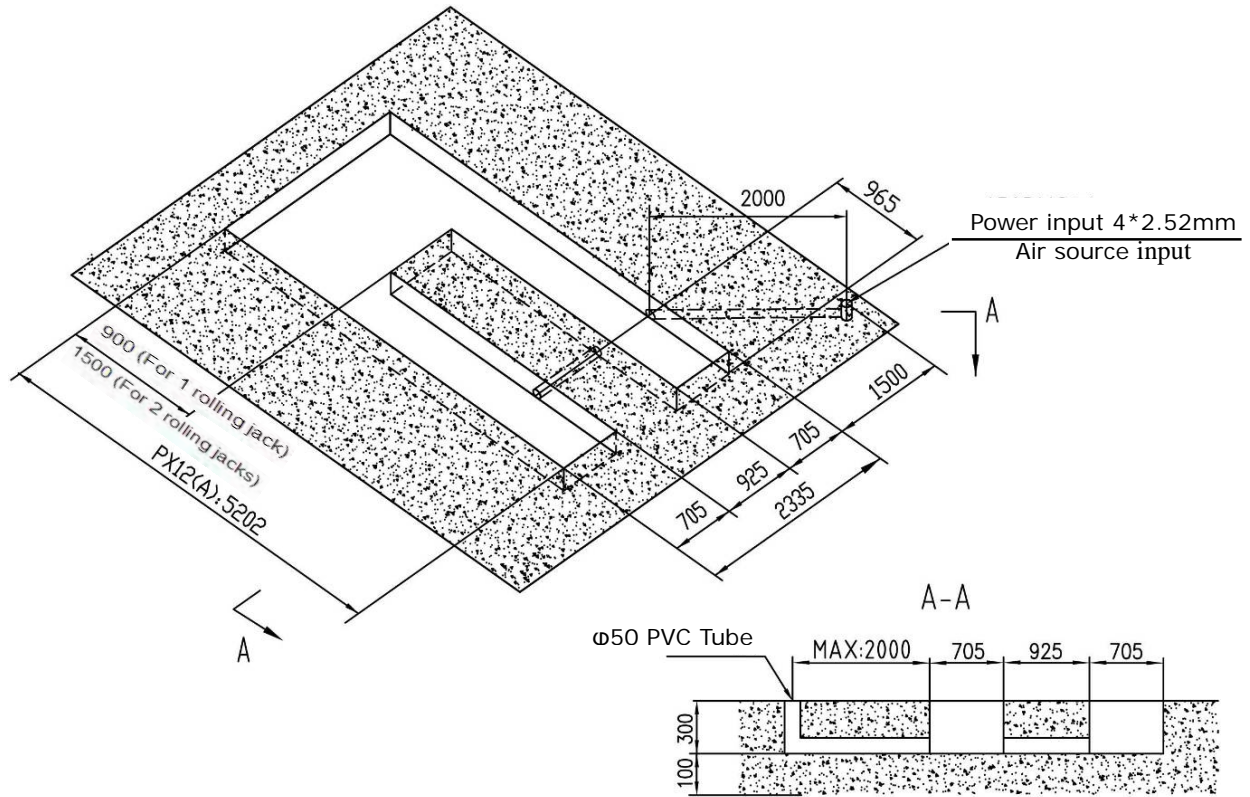


Fig. 7

2.2 Illustration of scissors lift 30-SS1201S flush mount installation (Fig.8).

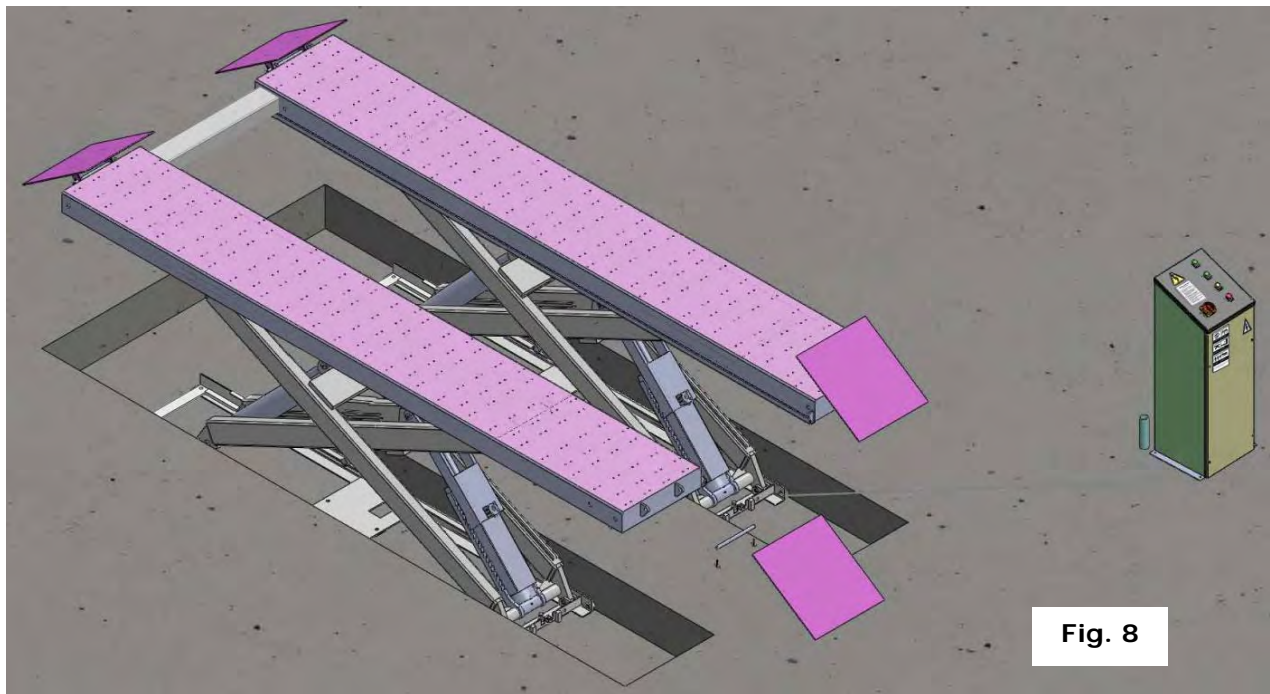


Fig. 8

2.3 Illustration of scissors lift 30-SS1203A flush mount installation (Fig.9).

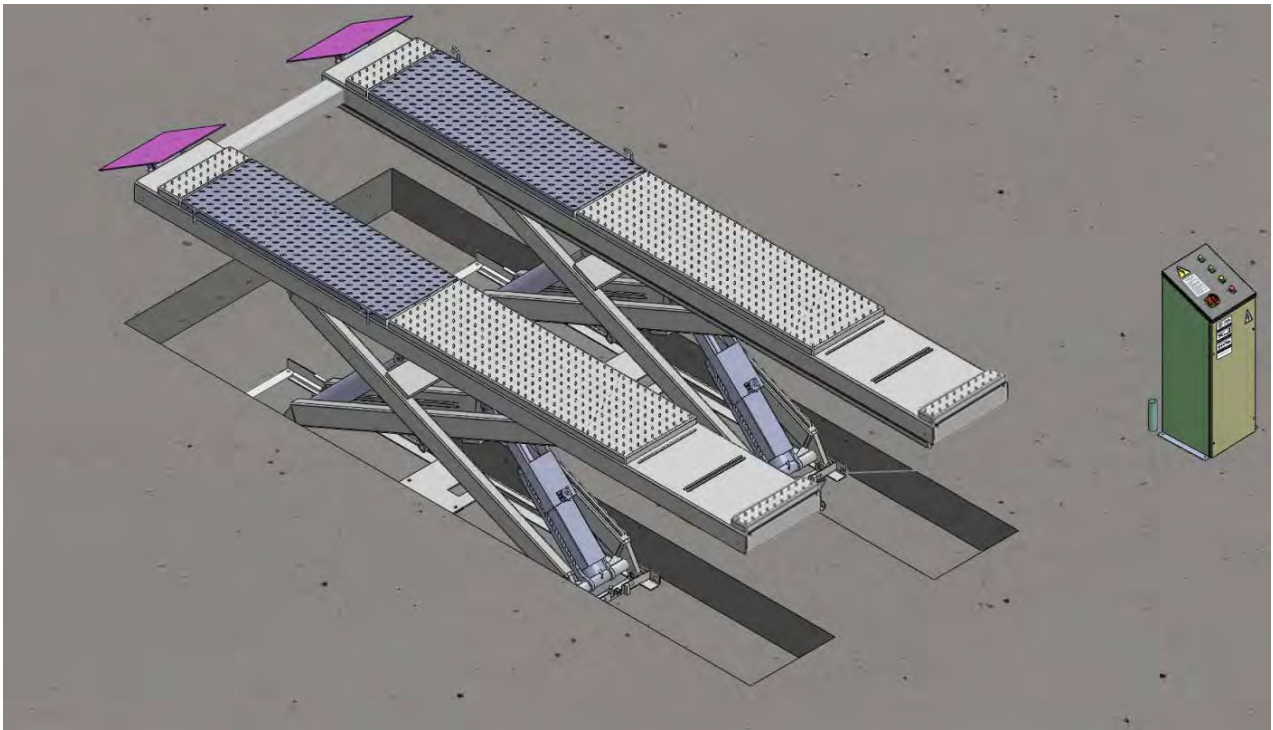


Fig. 9

B. Check the parts before assembly.

1. Packaged lift and control cabinet (See Fig. 10).



Fig. 10

2. Move aside the lift with fork lift or hoist, and open the outer packing carefully.

2.1 Parts for lift of on surface installation (See Fig.11, Fig.12)

For Model 30-SS1203A

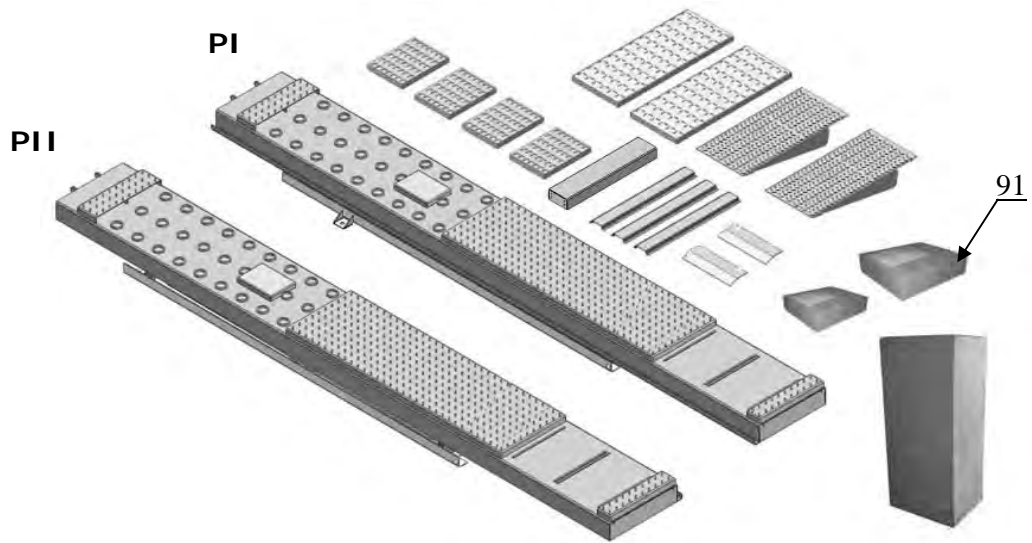


Fig. 11

For Model 30-SS1201S

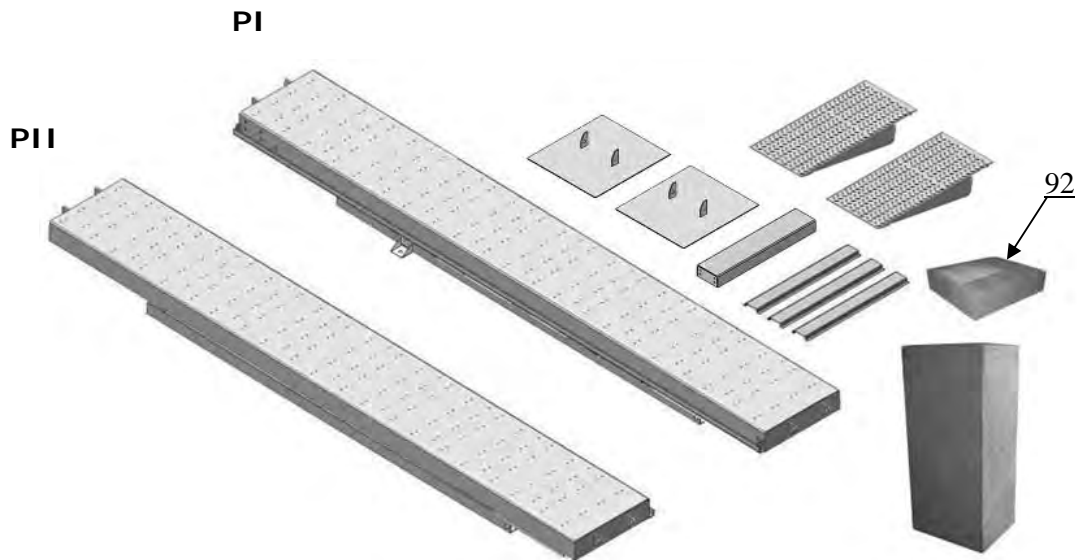


Fig. 12

2.2 Parts for lift of flush mount installation (See Fig.13, Fig.14)

Note: Need guide ramp for flush mount installation

For Model 30-SS1203A

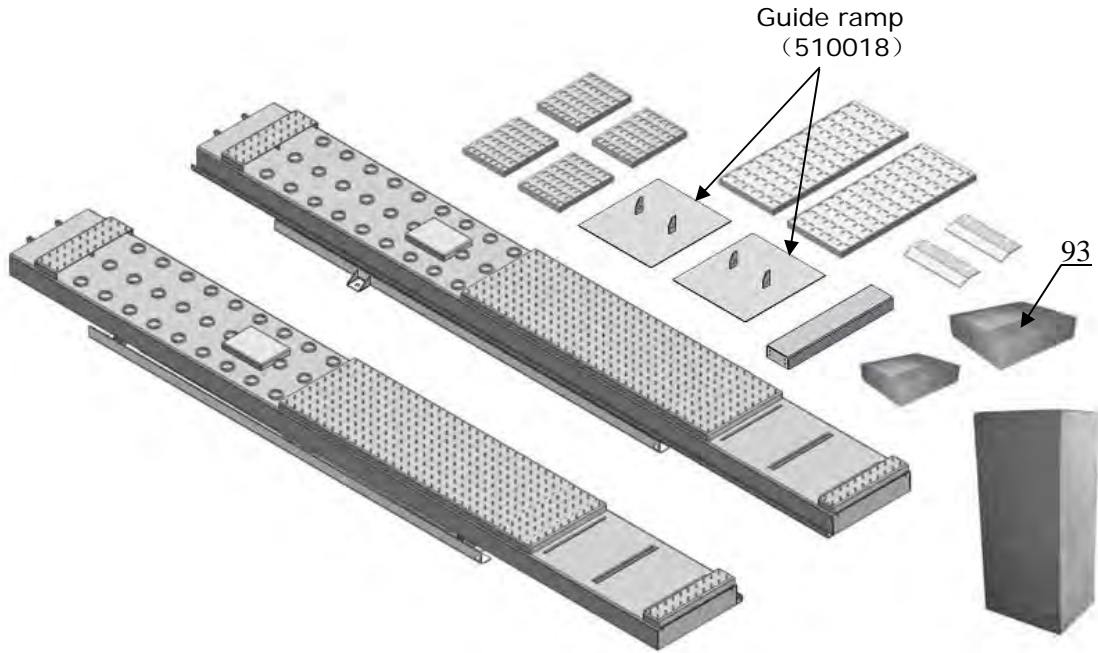


Fig. 13

For Model 30-SS1201S

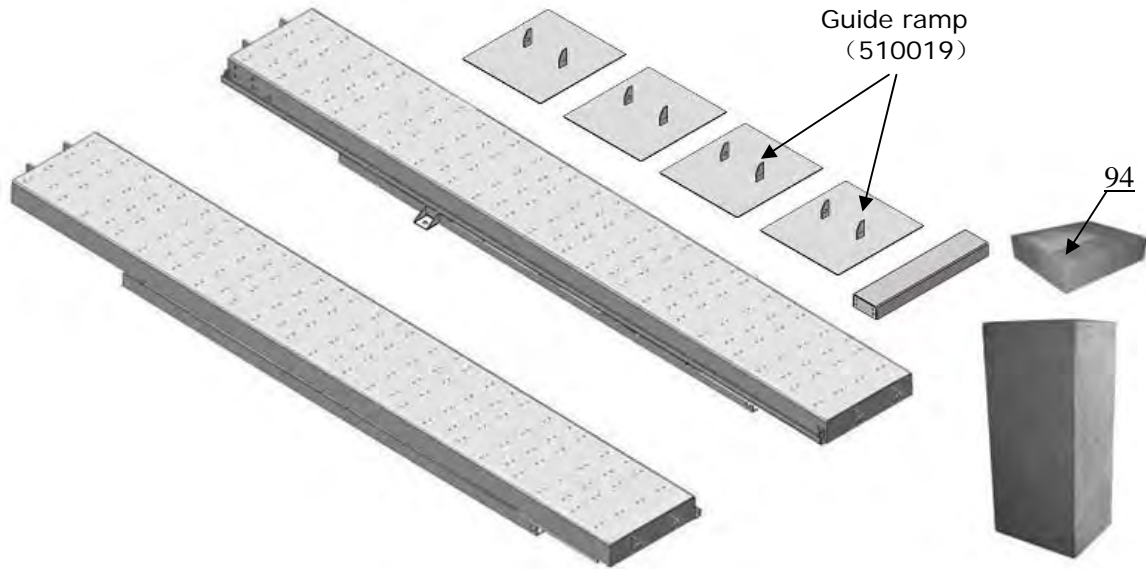


Fig. 14

3. Open the parts box, check the parts according to the part list (See Fig.15, Fig.16).



Fig. 15



Fig. 16

4. Check the parts of the parts bag according to the parts bag list.

4.1 Parts bag for lift of on surface installation (See Fig.17, Fig.18)

For 30-SS1203A

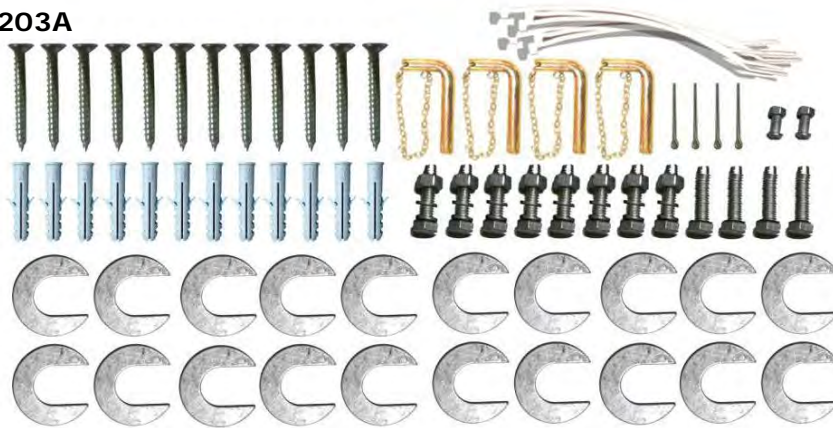


Fig. 17

For 30-SS1201S



Fig. 18

4.2 Parts bag for lift of flush mount installation (See Fig.19, Fig.20)

For 30-SS1203A

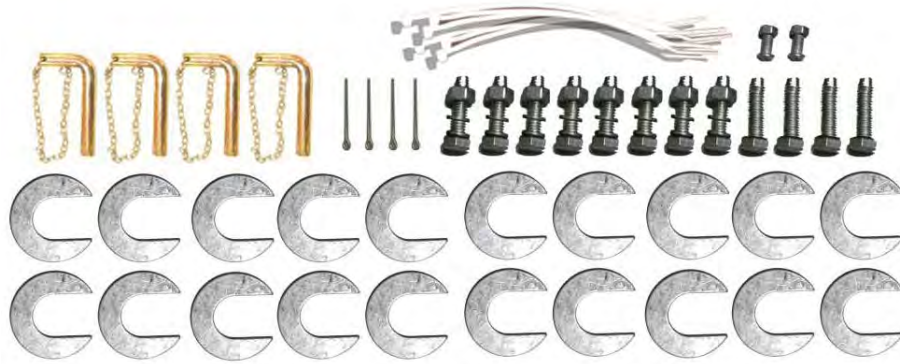


Fig. 19

For 30-SS1201S



Fig. 20

C. Layout the model and install oil system and air line system.

1. Select a location and layout the model according to steps A (See Fig. 21-22).

The control cabinet can be installed on the left or right of the model according to the site.

For Model 30-SS1203A

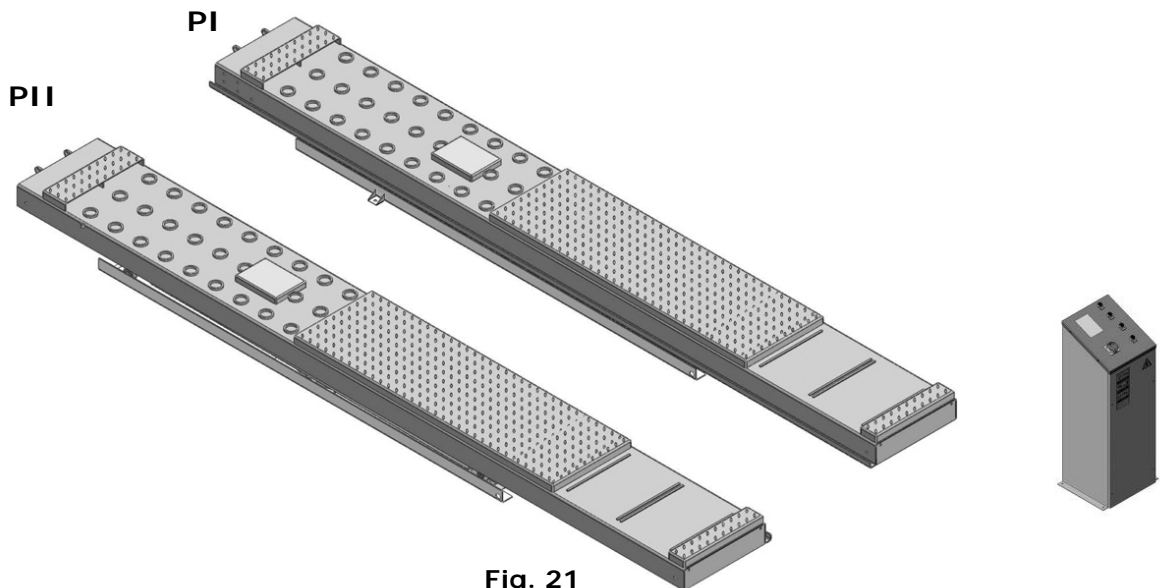
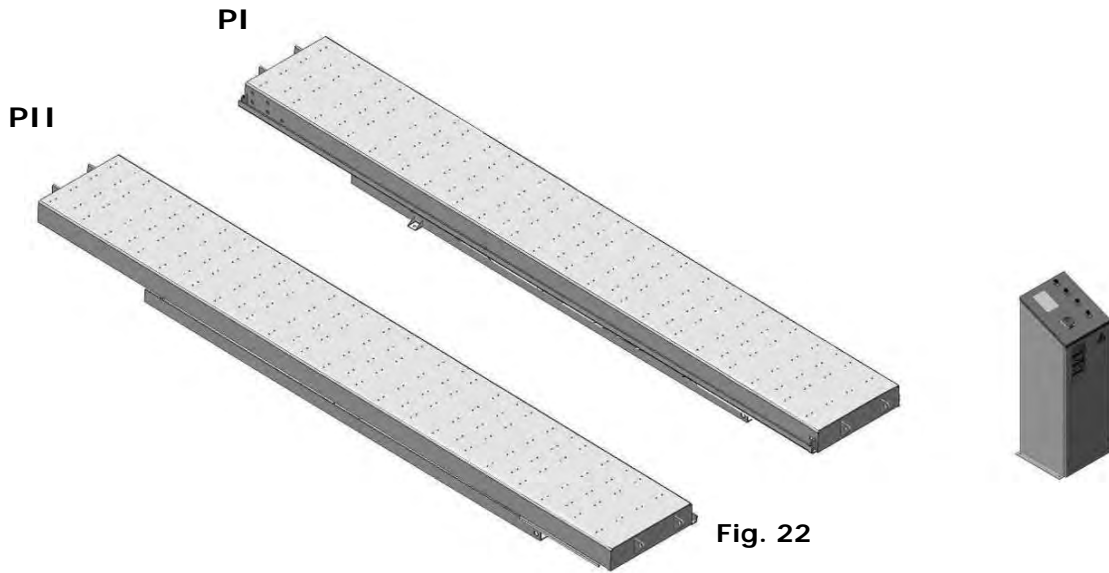


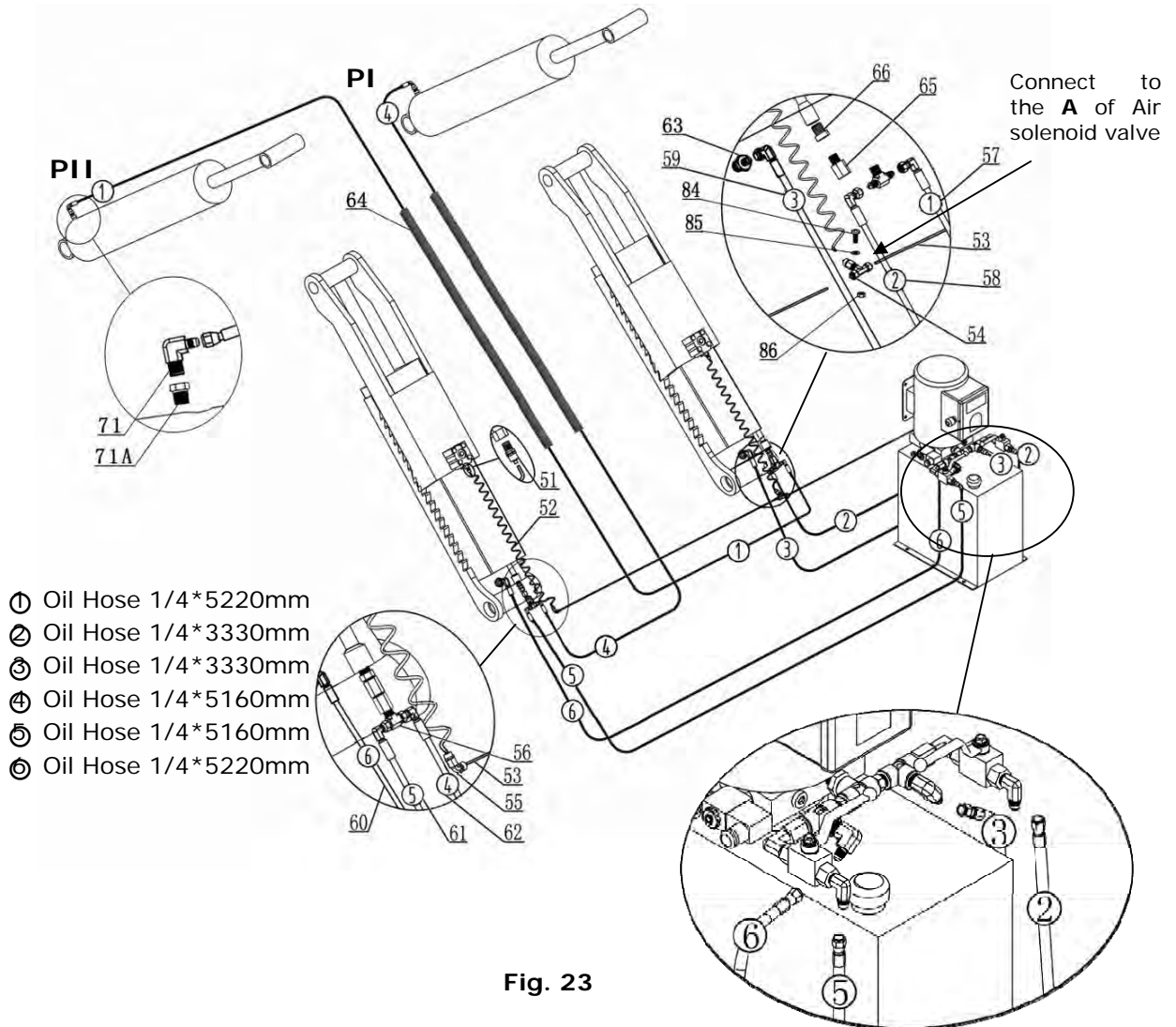
Fig. 21

For Model 30-SS1201S



2. Connecting the oil hose and air line.

2.1 When Control cabinet is installed in the left of the approach side. (See Fig. 23).



2.2 When Control cabinet is installed in the right of approach side. (See Fig. 24).

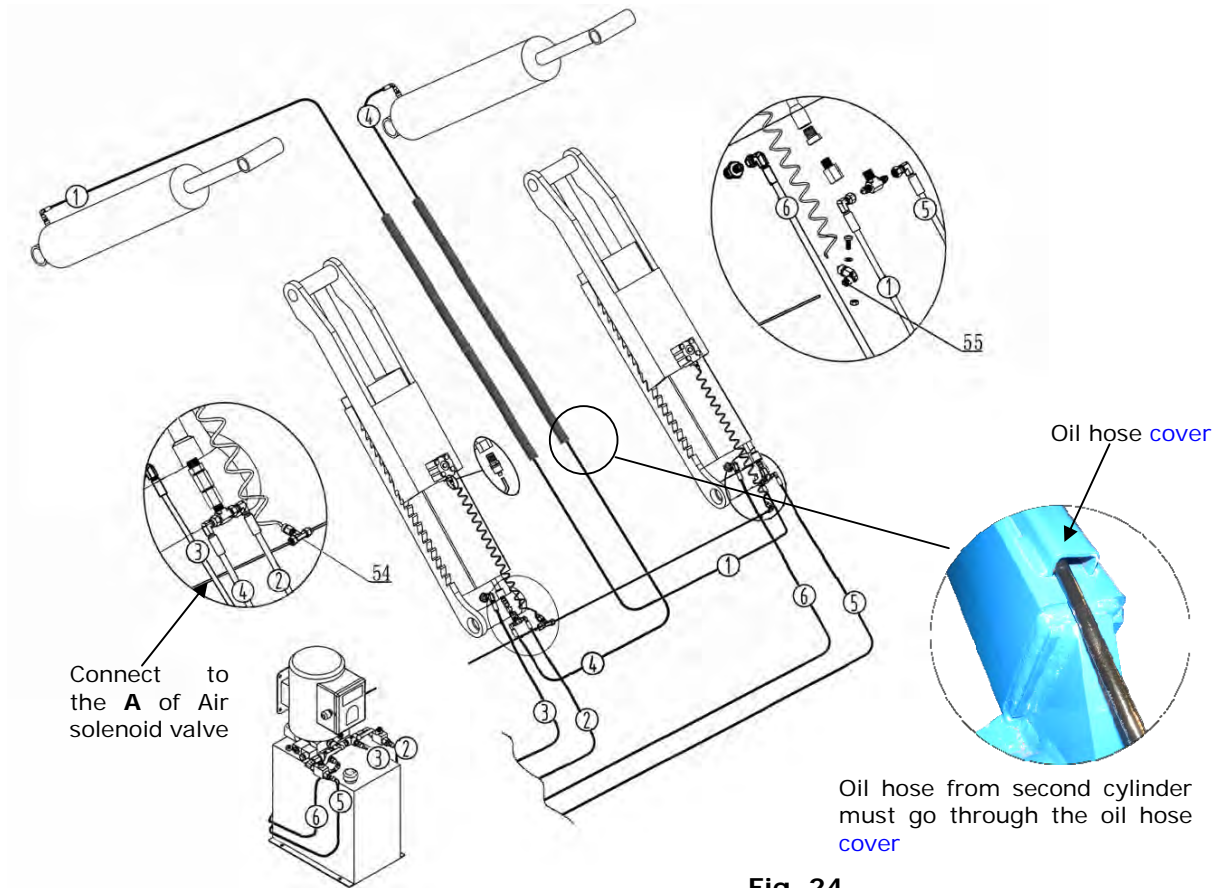


Fig. 24

3. Install the oil-water separator (See Fig. 25).

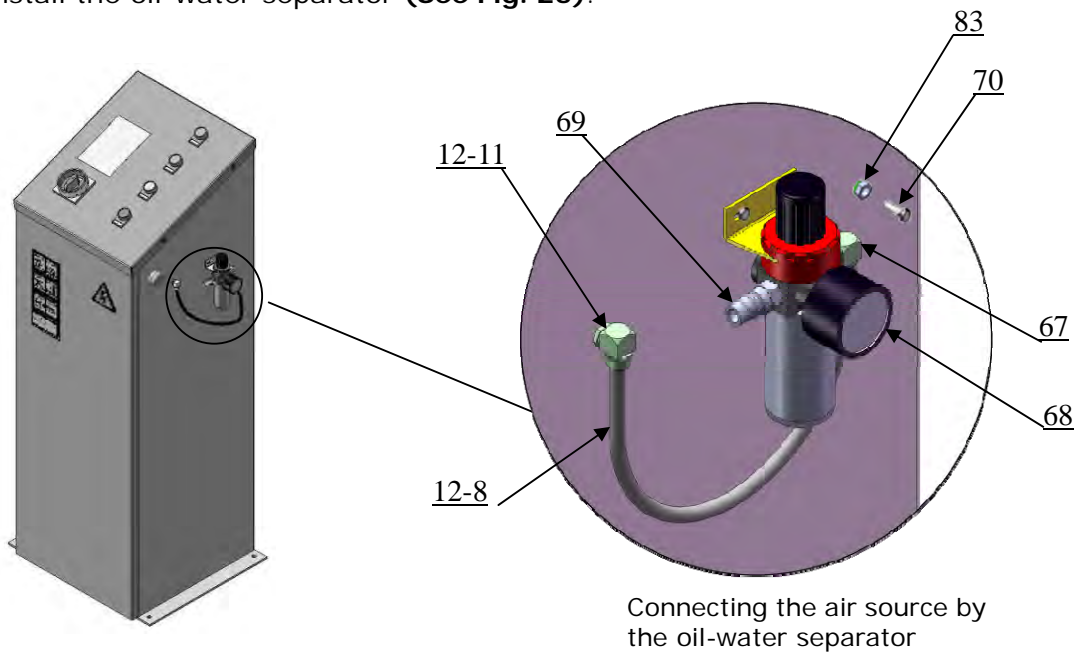
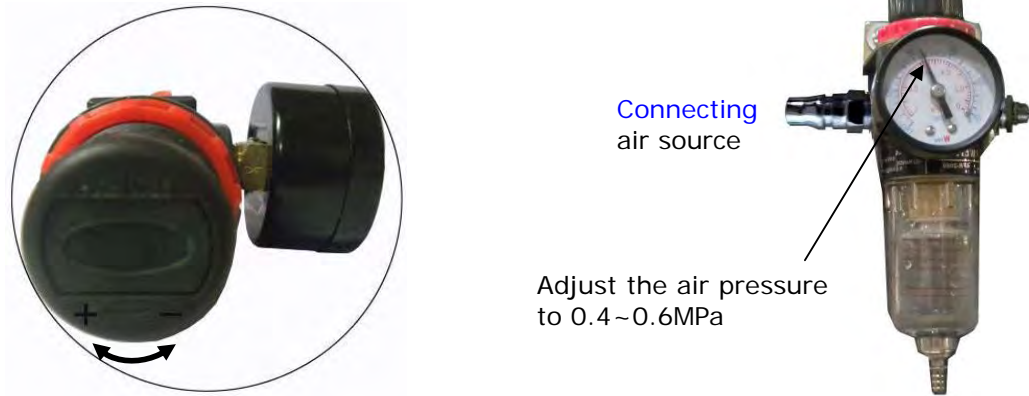


Fig. 25

4. **Connecting** the air source (air pressure 5kg/cm^2 - 8kg/cm^2), Adjust the air pressure to $0.4\sim 0.6\text{MPa}$ (See Fig. 26).



Clockwise to increase the air pressure
 Counter-clockwise to reduce the air pressure
 Adjust the air pressure to $0.4\sim 0.6\text{MPa}$

Fig. 26

D. Install electric system

1. Adjusting the current rating of thermal relay in control box according to the different configurations of hydraulic power unit. In general, the electric current of thermal relay should equal or larger than that of motor. The following table shows rated current regulation of thermal relay in case of different hydraulic power unit.

Hydraulic power unit	Single phase /4.0HP	Three phase /4.0HP
Rated current of thermal relay	22A	14A

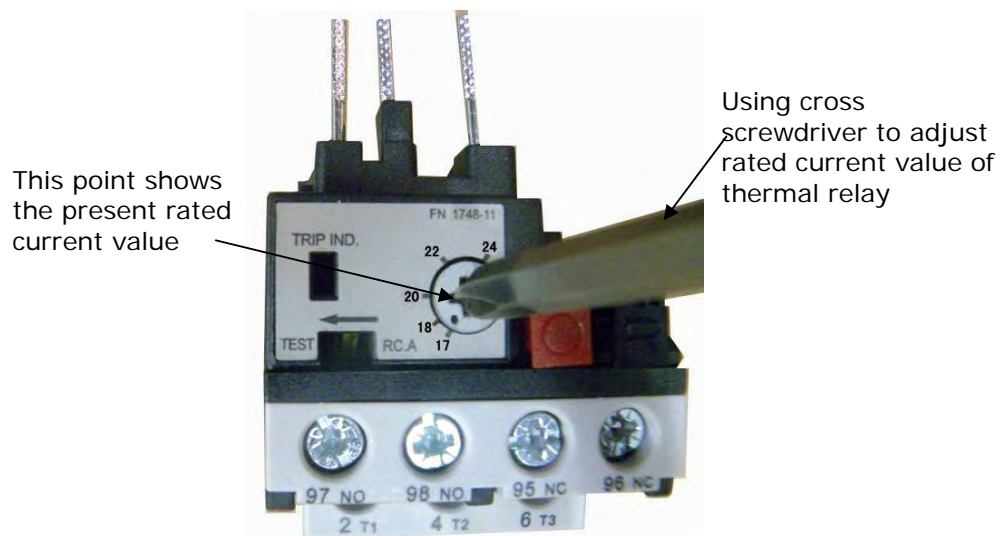


Fig. 27

2. Wire connection of hydraulic power unit (380V)

2.1 Connect the power wire and limit switch wire according to the Wiring diagram (See Fig. 28).

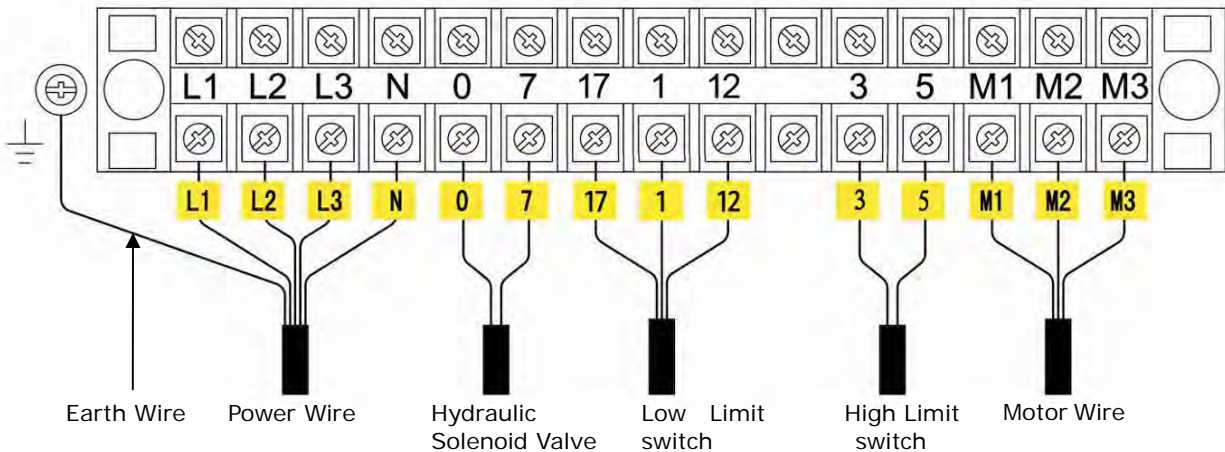


Fig. 28

2.2 Circuit Diagram (See Fig. 29).

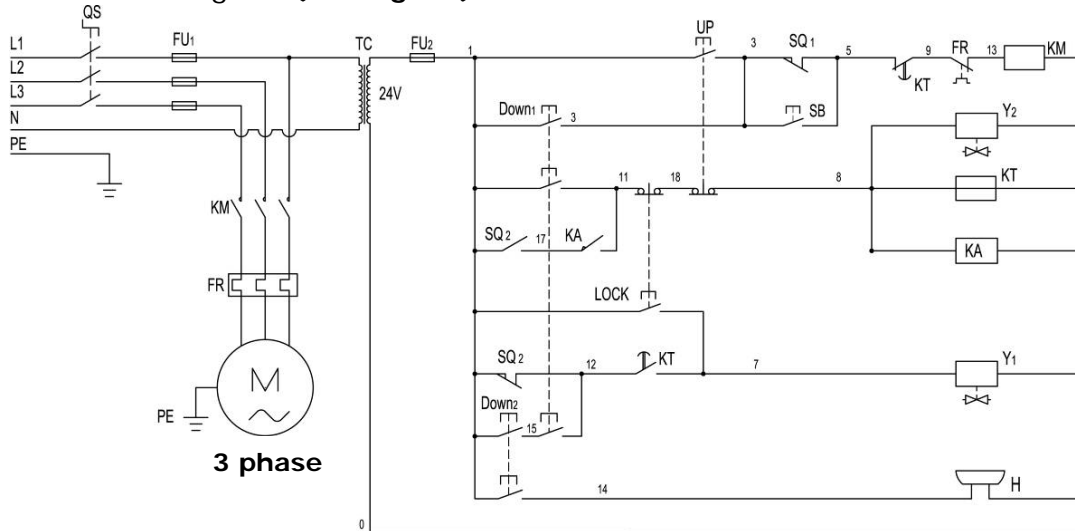


Fig. 29

Electric Component

Item	Name	Code	Specification	Item	Name	Code	Specification
1	Power switch	QS	380V AC	10	Push button	UP	Duplex
2	Fuse	FU1	25A	11	Push button	LOCK	Duplex
3	Fuse	FU2	3A	12	Push button	Down1	Triple
4	AC contactor	KM	24V AC	13	Push button	Down2	Duplex
5	Thermal relay	FR	17A-24A	14	Motor	M	Three phase
6	Time relay	KT	24V AC	15	Buzzer	H	24V AC
7	Limit Switch	SQ ₍₁₋₂₎	10A	16	Transformer	TC	24V AC
8	Hydraulic Solenoid Valve	Y1	24V AC	17	Intermediate relay	KA	24V AC
9	Air solenoid Valve	Y2	AC 24V	18	Red button	SB	2

3. Wire connection of hydraulic power unit (220V)

3.1 Connect the power wire and limit switch wire according to the Wiring diagram (See

Fig. 30)

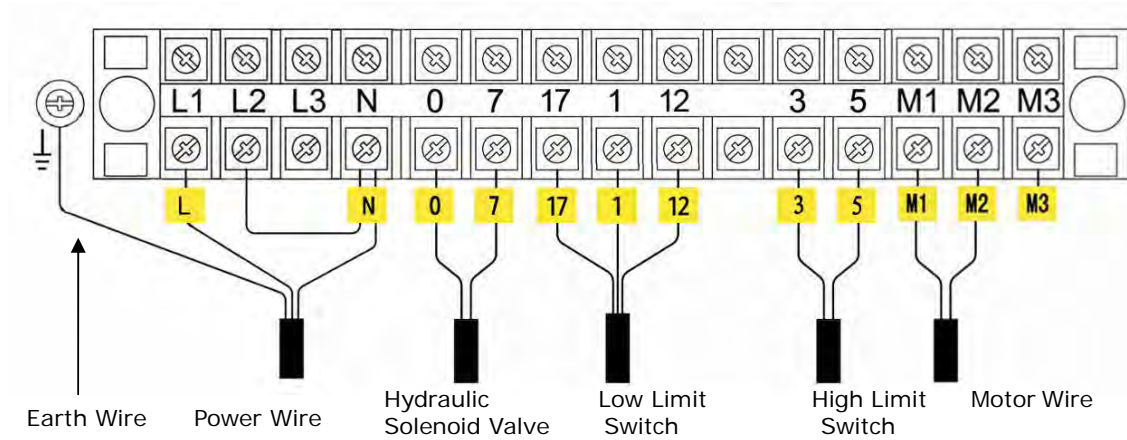


Fig. 30

3.2 Circuit Diagram (See Fig. 31).

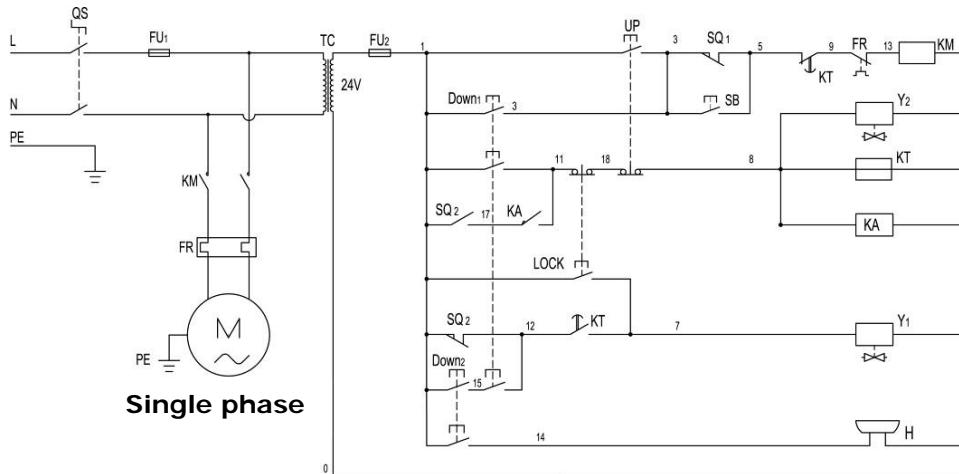


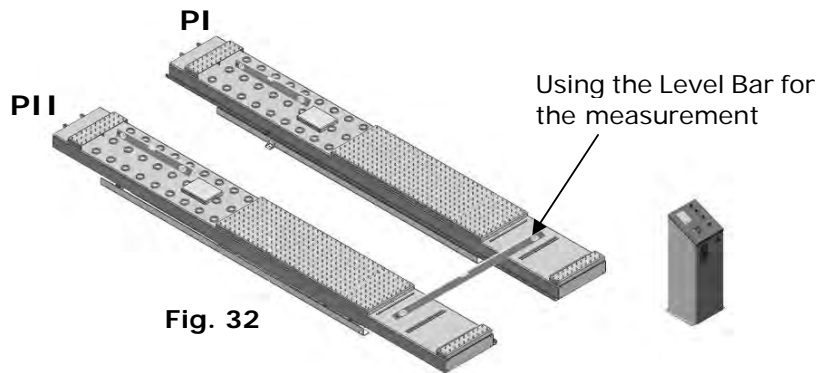
Fig. 31

Electric Component

Item	Name	Code	Specification	Item	Name	Code	Specification
1	Power switch	QS	380V AC	10	Push button	UP	Duplex
2	Fuse	FU1	25A	11	Push button	LOCK	Duplex
3	Fuse	FU2	3A	12	Push button	Down1	Triple
4	AC contactor	KM	24V AC	13	Push button	Down2	Duplex
5	Thermal relay	FR	17A-24A	14	Motor	M	Single phase
6	Time relay	KT	24V AC	15	Buzzer	H	24VAC
7	Limit Switch	SQ ₍₁₋₂₎	10A	16	Transformer	TC	24VAC
8	Hydraulic solenoid valve	Y1	24V AC	17	Intermediate relay	KA	24VAC
9	Air solenoid valve	Y2	AC 24V	18	Red button	SB	2A

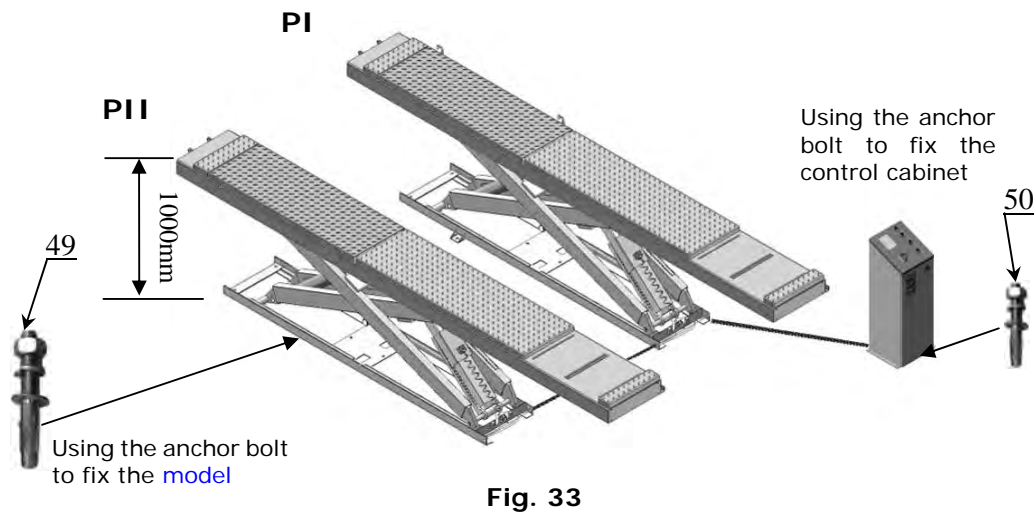
E. Level two platforms and install anchor bolts.

1. Check by level bar and use the shim to adjust the platforms until two platforms are in the same level (See Fig.32).



2. Install anchor bolts.

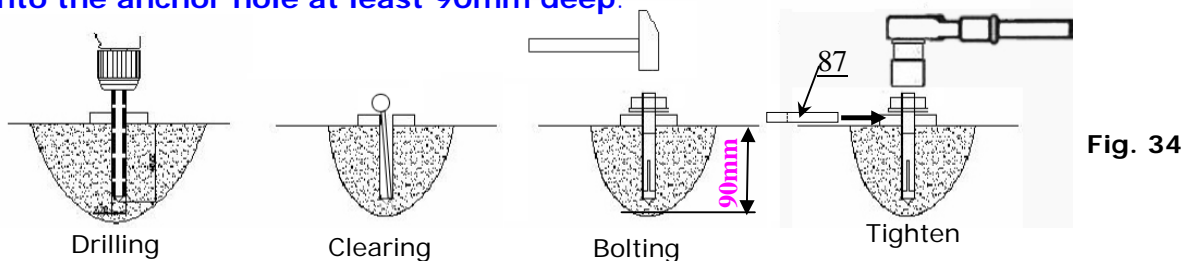
- 2.1 Raise the lift to 1000mm and prepare to install the anchor bolts (See Fig.33).



- 2.2 Fix the anchor bolts.

Drill the anchor hole and install the anchor bolts. Tap the anchor bolts into the anchor hole with a hammer, adjust the lever shim and tighten the bolts. (See Fig. 34).

Note: The tightening torque for the anchor bolt is 117N.m. Tap anchor bolts into the anchor hole at least 90mm deep.



For the lifts: use $\Phi 19$ driller to drill hole
For the control cabinet: use $\Phi 10$ driller to drill hole

F. Install runway connecting bar (See Fig. 35).

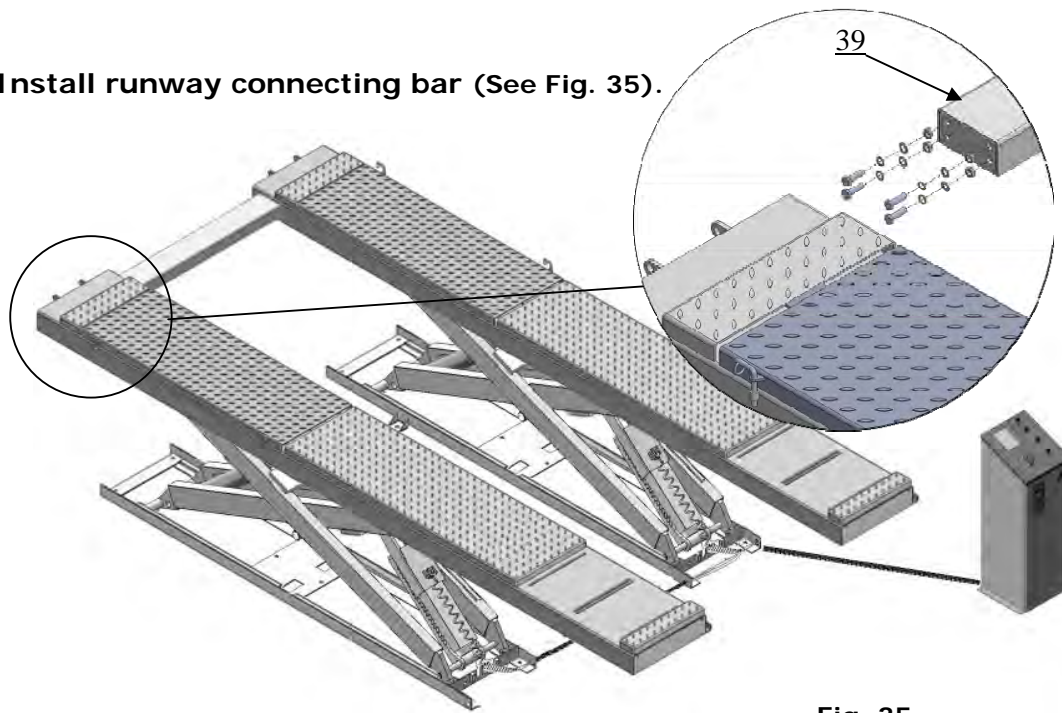


Fig. 35

G. Install oil hose cover for lift of on surface installation.

1. Tidy up the oil hose and air line, cover the oil hose cover (See Fig. 36).

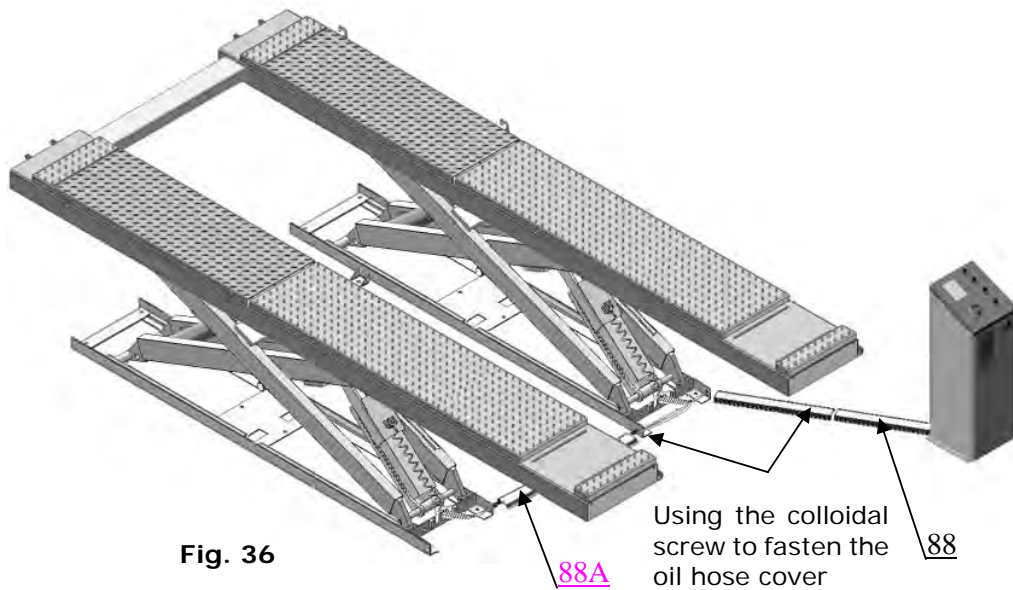


Fig. 36

2. Install the oil hose cover (See Fig. 37).

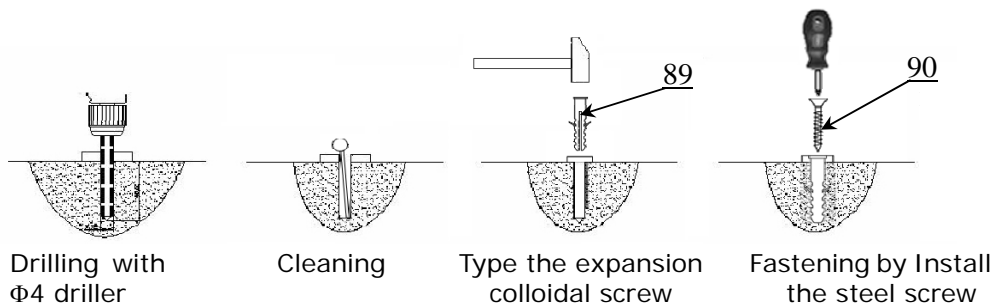
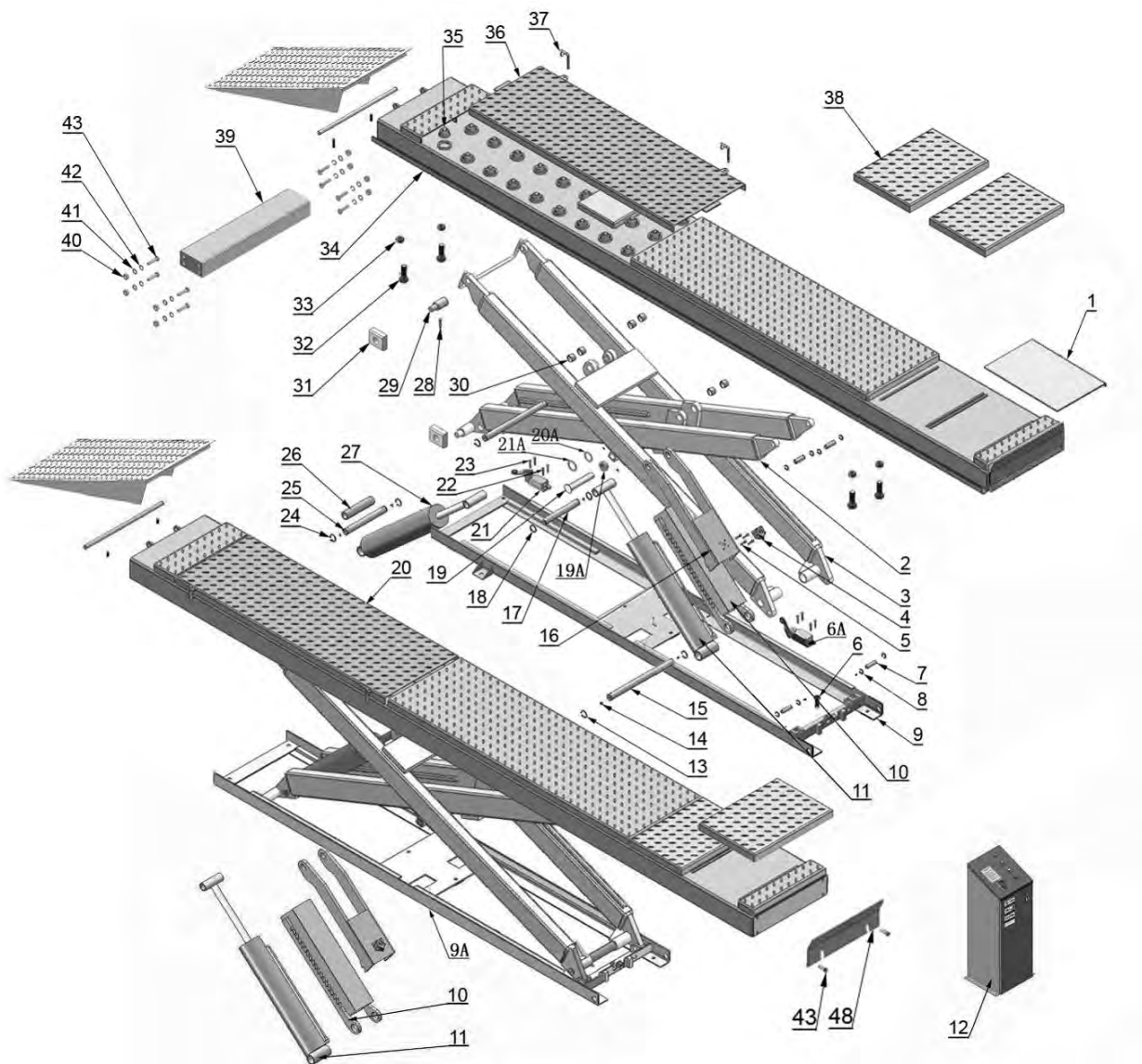


Fig. 37

IV. EXPLODED VIEW

MODEL 30-SS1203A



Optional Turnplate

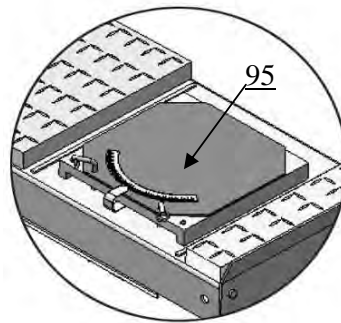


Fig. 38

MODEL 30-SS1201S

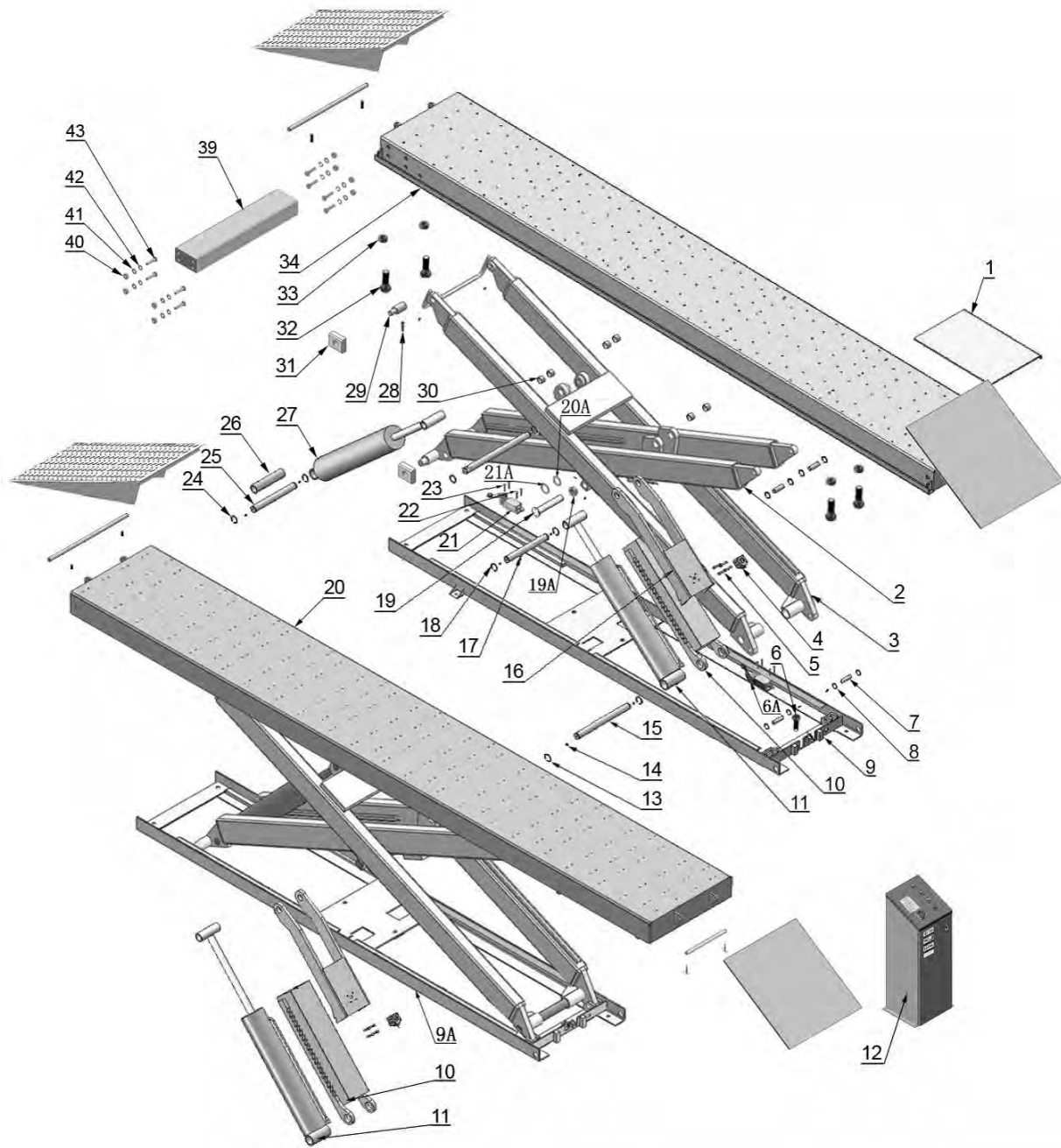


Fig. 39

CYLINDERS

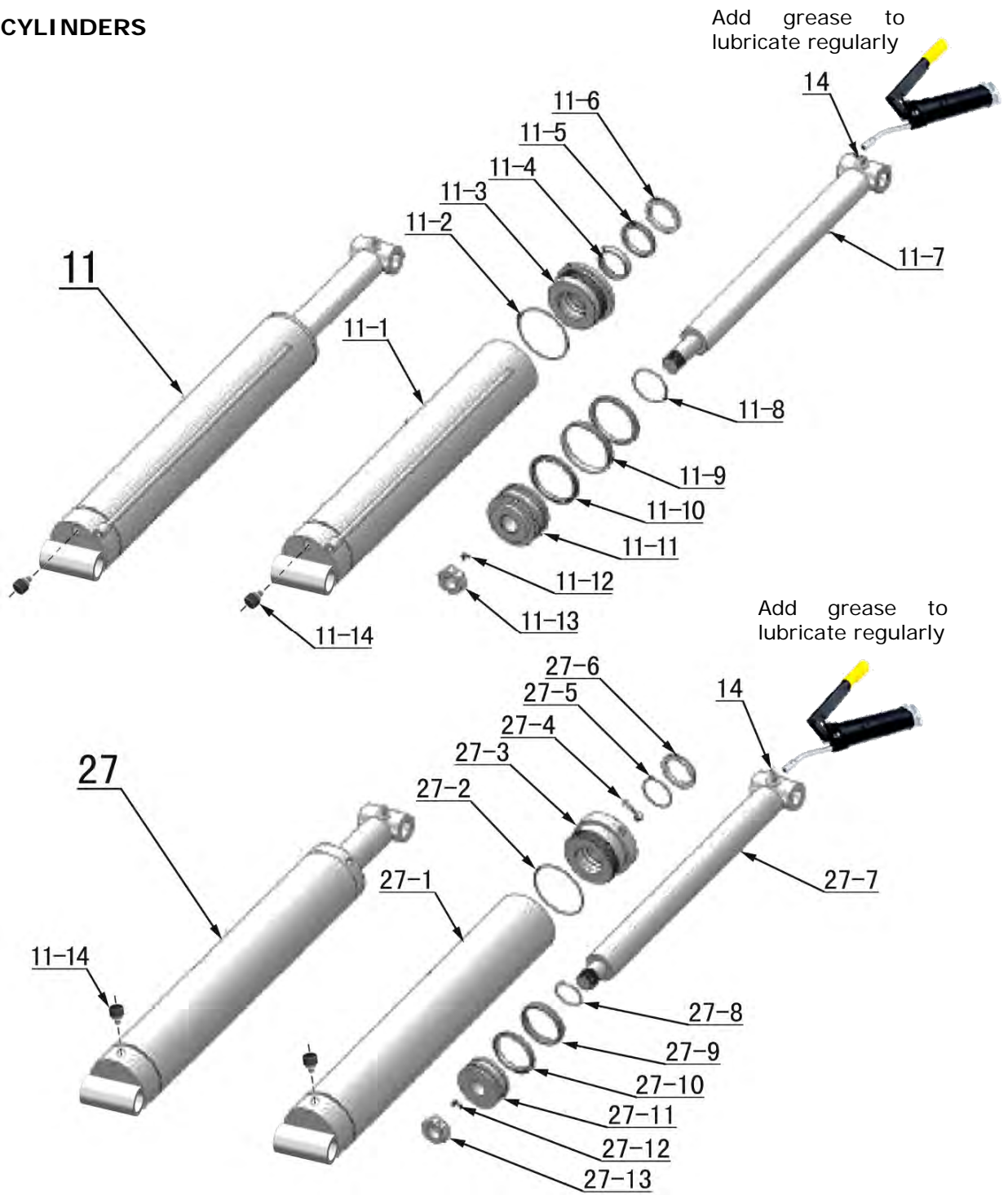


Fig. 40

CONTROL CABINET

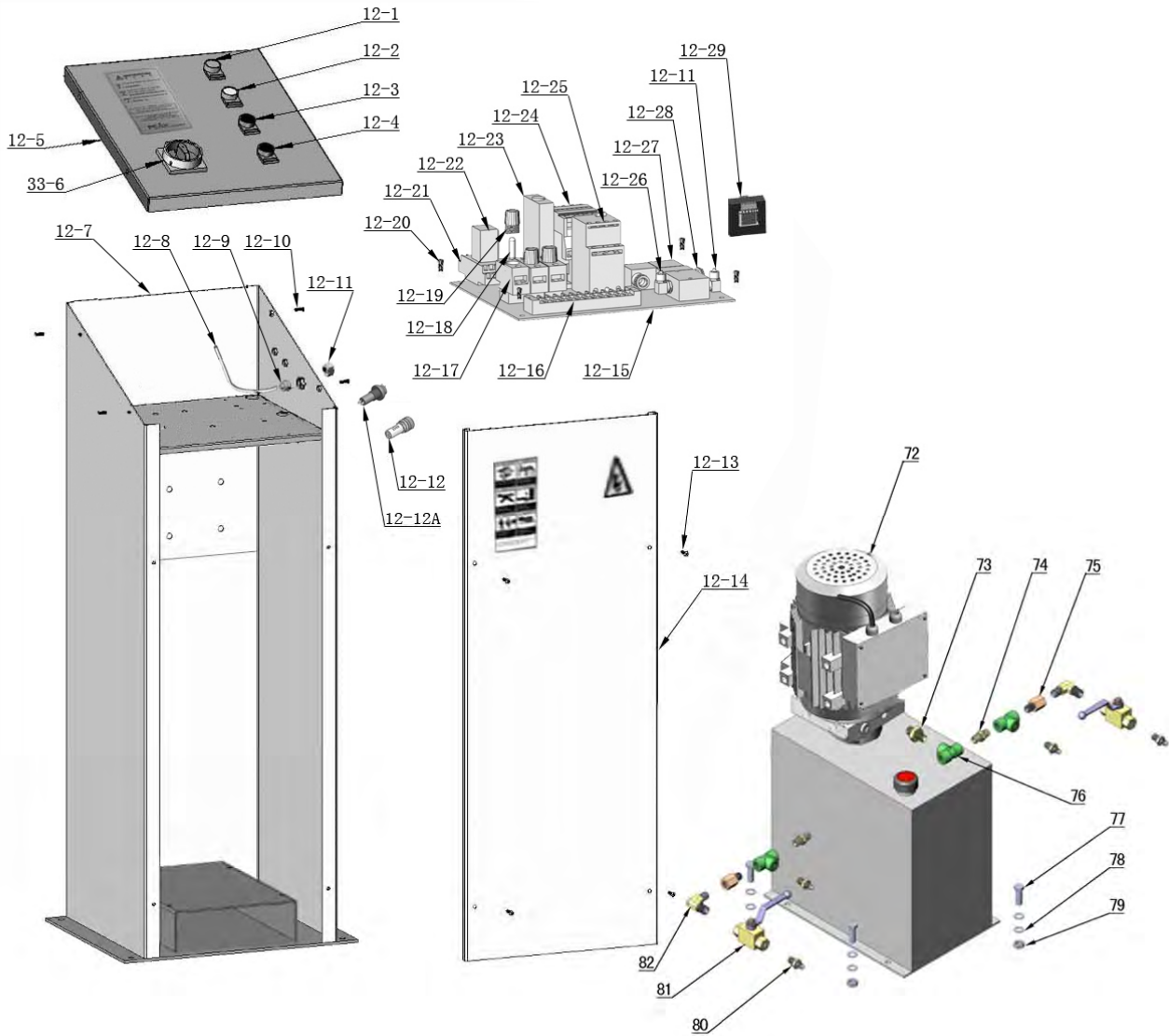


Fig. 41

ELECTRIC POWER UNIT

220V/50HZ/1Phase

380V/50HZ/3 Phase

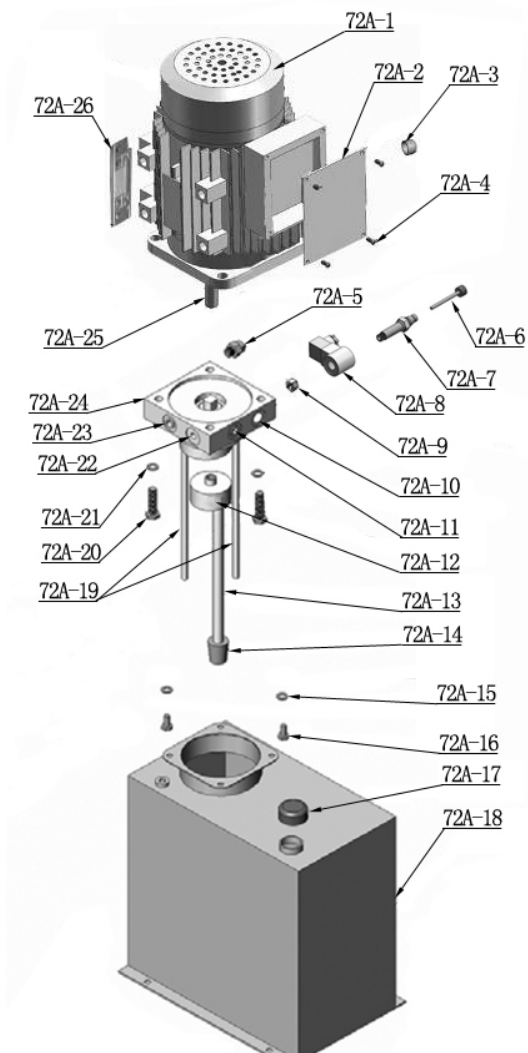
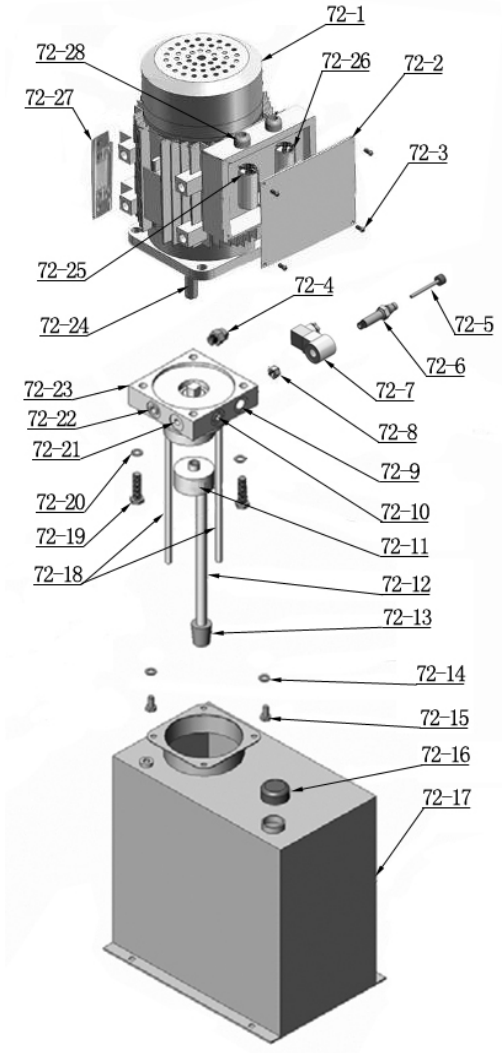


Fig. 42

V. TEST RUN

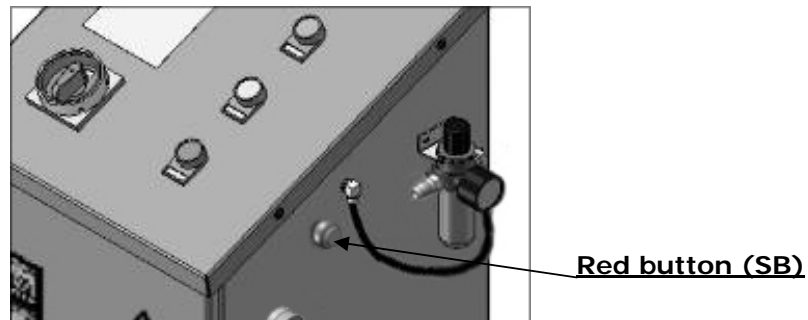
1. Fill oil adjustment

- a. Turn on the power after connecting oil system correctly. Press the **button Up**, and check the rotated direction of the motor (This is right if lift is upward, otherwise, it is wrong direction of the motor). Shut off power and exchange the phase connection if the direction is wrong, and then follow the following procedure of filling oil to cylinders.
- b. Fill the reservoir with hydraulic oil. (**Note: In consideration of power unit's durability, please use Hydraulic Oil 46#**).
- c. Lower both platforms to the lowest position.

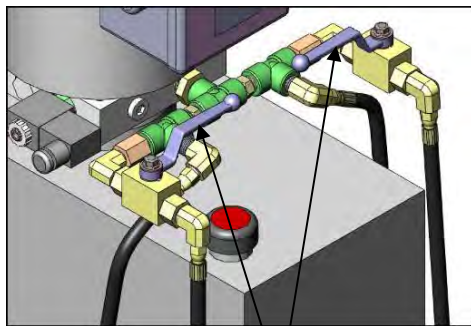
2. Synchronous adjustment

- a. Turn the handles of the shutoff valves to **normal working position** (see **Fig. 44**), press the **button Up** until the both platforms up to the **top position which the lift is stopped by the high limit**, at this time, press the **button UP** and the red button beside the oil water separator together to raise the lift to **the highest position** (**See Fig.43**).

Fig. 43

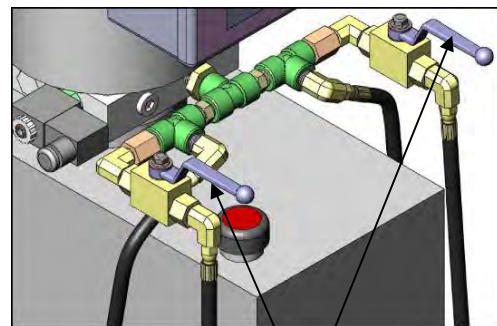


- b. Turn the handles of the both shutoff valves **from normal working position** to the oil filling position show as **Fig.45**



Normal Working Position

Fig. 44



Oil Filling Position

Fig. 45

- c. Press the button **UP** and the Red Button beside the oil-water separator to fill the oil into both secondly cylinders until it is full.
 - d. Turn the both handle of the shutoff valves to normal working position (**See Fig. 44**), press the **Down 1** button, Lower the lift until the lowest position. (If the lift can't be lowered down, turning the handle of two shutoff valves to oil filling position separately **See Fig. 45**, then turn back to normal working position quickly, the lift can be lowered).
 - e. Repeat the [synchronous adjustment procedure from a to d](#) more times, bleeding off the air of the cylinder, the lift would [work](#) synchronous.
3. Test run
- Check the height limit switch, the hose and fitting connection, and do test run. The lift must be tested run and checked carefully before in use.

VI. OPERATION INSTRUCTIONS

To lift vehicle

1. Keep clean of site near the lift, and down the lift to the lowest position.
2. Drive vehicle to the platform and put on the brake.
3. Turn on the power and press the button **UP**, raise the lift to the working position.
Note: make sure the vehicle is steady when the lift is rising
4. Press the button **Lock**, lock the lift in the safe position. Make sure the safety is locked in the same height.

To lower vehicle

1. Be sure clear of around and under the lift, only leaving operator in lift area.
2. Press the button Down1, until the lift low down to 600mm from ground, the lift stop by the low limit switch, then press Down1 and Down2 in the same time, lift goes on running down with warning alarm.
3. Drive away the vehicle when the lift is lowered to the lowest position.
4. Turn off the power.

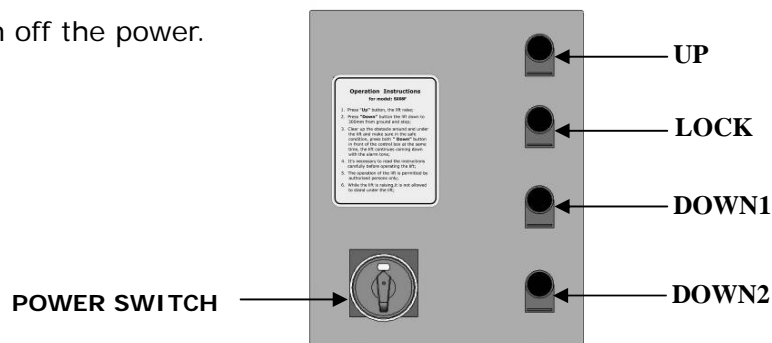


Fig. 46

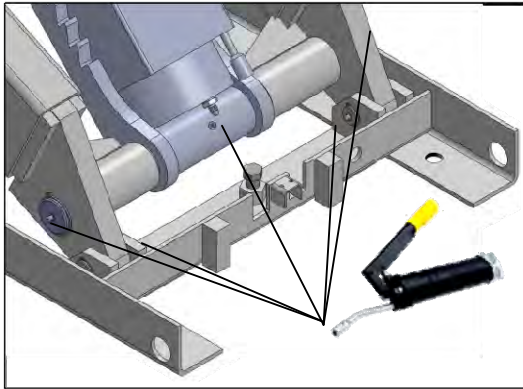
VII. MAINTENANCE SCHEDULE

Monthly:

1. Re-torque the anchor bolts to 80-117 Nm.
2. Check all fittings, bolts and pins to insure proper mounting.

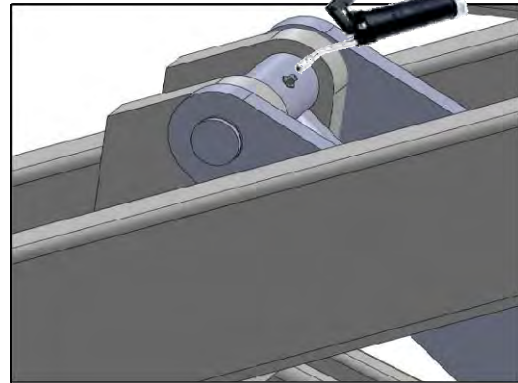
Note: All anchor bolts should take full torque. If any of the bolts do not function for any reason, **DO NOT** use the lift until the bolts have been replaced.

3. Make a visual inspection of all hydraulic hoses/lines for possible wear or leakage.
4. Adjusting the lifting level on both platforms.
5. Lubricate all moving parts with lubricant (**See Fig. 47-52**).



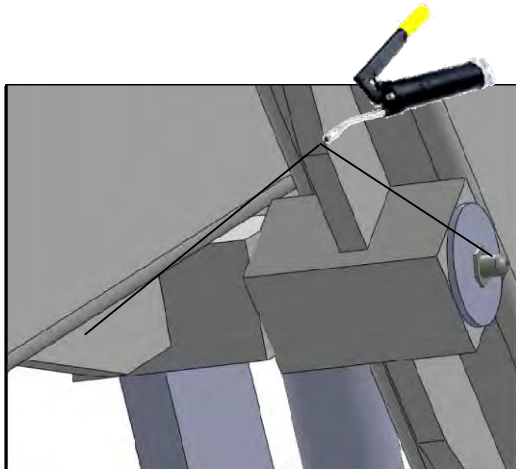
For main cylinder connecting pin

Fig.47



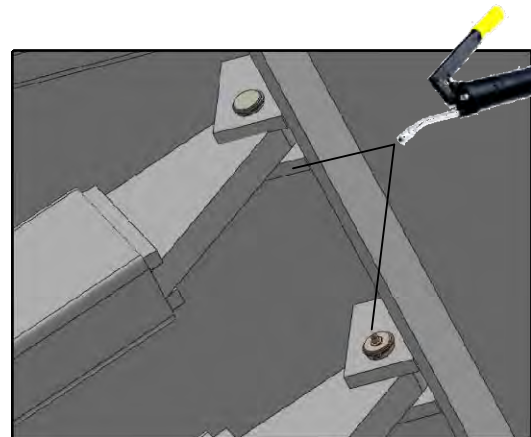
For pin of piston rod of main cylinder

Fig.48



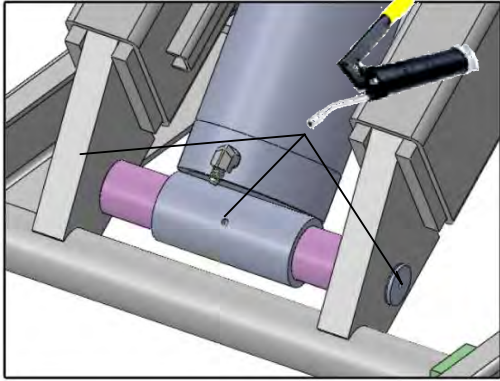
For pins of connecting platforms and scissors

Fig. 49



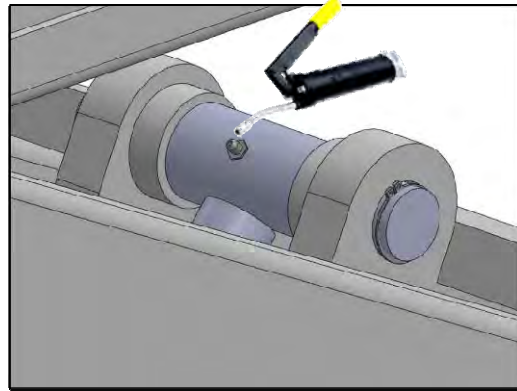
For pins of connecting platforms and scissors

Fig. 50



For **secondly cylinder**
connecting pin

Fig.51



For **pin** of piston rod of
secondly cylinder

Fig.52

Every six months:

1. Make a visual inspection of all moving parts for possible wear, interference or damage.
2. Check and adjust the platform as necessary to insure level lifting.
3. Check all fastener and re-torque.

VIII.TROUBLE SHOOTING

TROUBLE	CAUSE	REMEDY
Motor does not run	<ol style="list-style-type: none"> 1.Button does not work 2.Wiring connections are not in good condition 3. AC contactor burned out 4. Motor burned out 	<ol style="list-style-type: none"> 1. Replace button 2. Repair all wiring connection 3. Replace AC contactor 4. Repair or replace motor
Motor runs but the lift is not raised	<ol style="list-style-type: none"> 1. Motor runs in reverse rotation 2. Low oil level 3. The Gear Pump out of operation 4. Relief valve or check valve in damage 5. Hydraulic Solenoid valve out of operation 	<ol style="list-style-type: none"> 1. Reverse two power wire 2. Fill tank 3. Repair or replace 4. Repair or replace 5. Repair or Replace
Lift does not stay up	<ol style="list-style-type: none"> 1. Hydraulic Solenoid valve out of operation 2. Relief valve or check valve leakage 3. Cylinder or fittings leaks 	Repair or replace
Lift raised slowly	<ol style="list-style-type: none"> 1. Oil line is jammed 2. Gear Pump leaks 3. Overload lifting 4. Power Voltage low 5. Oil mixed with air 	<ol style="list-style-type: none"> 1. Clean the oil line 2. Repair or Replace 3. Check load 4. Check electrical system 5. Fill tank and bleeding air
Lift can not lower	<ol style="list-style-type: none"> 1. Hydraulic Solenoid valve out of operation 2. Air Solenoid Valve out of operation 3. Air cylinder in damage 4.Low Air pressure 	<ol style="list-style-type: none"> 1. Repair or replace the Valve 2. Repair or replace the Valve 3. Repair or replace 4. Check the air line

IX. PARTS LIST For Model 30-SS1203A, 30-SS1201S

Item	Part#	Description	QTY		Note
			30-SS 1203A	30-SS 1201S	
1	520003	Shelf	2	2	
2	530002A	Inner Scissors	2	2	
3	530003A	Outer Scissors	2	2	
4	520011	Air Cylinder	2	2	
5	420017	Cup Head Bolt	8	8	
6	520096	Hex Bolt	2	2	
6A	206013A/ 530010	Limit switch assy.	1	1	
7	520013A	Connecting Pin	8	8	
8	206032	Snap Ring	16	16	
9	520015C	Baseframe	1	1	
9A	520015D	Baseframe	1	1	
10	520038B	Main Safety Lock Tube	2	2	
11	520028B	Main Cylinder	2	2	
12	520102A	Control Cabinet	1	1	
13	520020	Snap Ring	4	4	
14	620064	Grease Fitting	32	32	
15	520018A	Connecting Shaft For Main Cylinder	2	2	
16	520021A	Safety Lock	2	2	
17	610005A	Connecting pin for Main Cylinder	4	4	
18	610098	Snap Ring	8	8	
19	520024A	Connecting Pin For Scissors	4	4	
19A	610019	Self nut	4	4	
20	540004C	Offside Platform	1	0	
	530004C		0	1	
20A	610108	Washer	4	4	
21	206013A/ 510007	Limit Switch Assy.	1	1	
21A	530023	Washer	4	4	
22	61K053	Cup Head Bolt	4	4	
23	420149	Cup Head Bolt	4	4	
24	520023	Snap Ring	4	4	
25	560026A	Connecting Shaft For Secondly Cylinder	2	2	
26	560027	Piston Connecting Tube	2	2	
27	520017B	Secondly Cylinder	2	2	
28	520029	Socket Set- screw	4	4	
29	520032A	Pin For Pulley	4	4	
30	420132A	Bronze Bush	12	12	
31	530012	Slider	8	8	
32	520103	Hex Bolt	8	0	
	510016	Hex Bolt	0	8	
33	420175A	Hex Nut	8	8	
34	540005C	Powerside Platform	1	0	
	530005C		0	1	
35	420157	Steel Ball	64	0	
36	520036A	Rear Slip Plate	2	0	
37	520037	Pin for Rear Slip Plate	4	0	
38	560003	Plate for Adjustable Turnplate	2	0	
39	530001B	Runway Connecting Bar	1	1	
40	206023A	Hex Nut	8	8	

Item	Part#	Description	QTY		Note
			30-SS 1203A	30-SS 1201S	
41	420026	Lock Washer	8	8	
42	206006	Washer	8	8	
43	420136	Hex Bolt	12	8	
44	520005A	Drive-in Ramp(On surface/Flush mount)	2/0	0	
	510004A		0	2/0	
45	510006	Pin For Drive-in Ramp	2	4	
46	201005	Split Pin	4	8	
47	510018	Guild Ramp (On surface/Flush mount)	0/2	0	
	510019		0	2/4	
48	520004A	Tire Stop Plate	2	0	
49	209059	Anchor Bolt	14	14	
50	620071	Anchor Bolt	4	4	
51	420047	Quick Fitting for Air Cylinder	2	2	
52	520065	Spring Air Line	2	2	
53	510025	Air Line (Black)	1	1	
54	420124	T-fitting	1	1	
55	520069	90° Quick fitting for air line	1	1	
56	209062	T-Fitting	2	2	
57	530006A	Oil Hose No.①	1	1	
58	550006A	Oil Hose No.②	1	1	
59	550006A	Oil Hose No.③	1	1	
60	530006A	Oil Hose No.⑥	1	1	
61	530020	Oil Hose No.⑤	1	1	
62	530020	Oil Hose No.④	1	1	
63	510023	Straight Fitting	2	2	
64	520101	Protective Plastic Hose	2	2	
65	630103	Straight Fitting	2	2	
66	520071	Straight Fitting	2	2	
67	420076	90° Fitting For Air Line	1	1	
68	420145	Oil-water Separator	1	1	
69	420146	Straight Fitting for air line	1	1	
70	680005	Cup Head Bolt	4	4	
71	420097	90° Fitting	2	2	
71A	510024	Fitting	2	2	
72	550003	Power unit	1	1	
73	440009	Straight Fitting for power unit	1	1	
74	206062	Straight Fitting	2	2	
75	630103	Straight Fitting	2	2	
76	61K107	T- Fitting	3	3	
77	61K050	Hex Bolt	4	4	
78	209033	Washer	8	8	
79	209005	Nylok Nut	4	4	

Item	Part#	Description	Qty		Note
			30-SS 1203A	30-SS 1201S	
80	209064	Straight Fitting	4	4	
81	61K101	Shutoff Valve	2	2	
82	680072	90° Fitting	2	2	
83	420018	Nylok Nut	2	2	
84	610099	Cup Head Bolt	3	3	
85	610101	Washer	3	3	
86	610097	Hex Nut	3	3	
87	620065	Shim	20	20	
88	510005	Oil Hose Cover	2	2	
88A	530008	Oil Hose Cover	1	1	
89	620070	Colloidal	12	12	
90	620069	Wood Screw	12	12	
91	540500A	Parts box (On surface installation)	1	0	
92	530500A	Parts box (On surface installation)	0	1	
93	540501A	Parts box (Flush mount installation)	1	0	
94	530501A	Parts box (Flush mount installation)	0	1	
95	420158	Turnplate (optional)	2	0	
Parts For Main Cylinder (See Fig. 40)					
11-1	510008B	Main Cylinder	1	1	
11-2	520053	O- Ring	1	1	
11-3	520043	Head Cap (Main)	1	1	
11-4	520052	Support Ring	1	1	
11-5	520051	Y- Ring	1	1	
11-6	520050	Dust Ring	1	1	
11-7	510009B	Piston Rod (Main)	1	1	
11-8	520054	O- Ring	1	1	
11-9	520056	Support Ring	1	1	
11-10	520055	Y- Ring	2	2	
11-11	520045	Piston (Main)	1	1	
11-12	520049	Set Screw	1	1	
11-13	520047	Hex Nut	1	1	
11-14	530009	Burst valve	4	4	
Parts For Secondly Cylinder (See Fig. 40)					
27-1	510010B	Secondly Cylinder	1	1	
27-2	520060	O- Ring	1	1	
27-3	520044	Head Cap (Secondly)	1	1	
27-4	201034	Bleeding Plug	2	2	
27-5	520058	O- Ring	1	1	
27-6	217078	Dust Ring	1	1	
27-7	510011B	Piston Rod (Secondly)	1	1	
27-8	520061	O- Ring	1	1	
27-9	520062	Support Ring	1	1	
27-10	520063	Y- Ring	1	1	
27-11	520046	Piston (Secondly)	1	1	
27-12	520049	Set Screw	1	1	
27-13	520048	Hex Nut	1	1	
Item	Part#	Description	QTY.		Note

			30-SS 1203A	30-SS 1201S	
Parts List For Control Cabinet (See Fig. 41)					
12-1	420071	Button UP	1	1	
12-2	420071	Button LOCK	1	1	
12-3	420072	Button DOWN 1	1	1	
12-4	420142	Button DOWN 2	1	1	
12-5	52K001C	Control Panel	1	1	
12-6	420074	Power Switch (OS)	1	1	
12-7	52K007C	Cabinet Body	1	1	
12-8	420167C	Air line	2	2	
12-9	61K110	Straight Fitting	1	1	
12-10	209145	Cup Head Bolt	4	4	
12-11	420076	90° Fitting	2	2	
12-12	420143	Buzzer	1	1	
12-12A	650017	Red button	1	1	
12-13	52K056	Cup Head Bolt	4	4	
12-14	52K022	Cabinet Door	1	1	
12-15	52K006A	Install panel	1	1	
12-16	620082	Termanal	1	1	
12-17	420087	Fuse base	3	3	
12-18	420086	Fuse(FU)	3	3	
12-19	420085	Fuse Cap	3	3	
12-20	61K052	Cup head bolt	19	19	
12-21	420135	Timer Relay Base	2	2	
12-22	420141	Intermediate Relay(KA)	1	1	
12-23	420083	Timer Relay(KT)	1	1	
12-24	420084A	AC Contactor (KM)	1	1	
12-25	440034	Thermal Relay(FR)	1	1	
12-26	420166	90° Fitting	1	1	
12-27	420077	Air Solenoid Valve(Y2)	1	1	
12-28	201034	Bleeding plug	1	1	
12-29	420134	Transformer (TC)	1	1	

Parts For Electric Power Unit 220V/50HZ/1 Phase

Item	Part#	Description	QTY.		Note
			30-SS 1203A	30-SS 1201S (X550)	
72-1	440014B	Motor	1	1	
72-2	440030	Cover of Motor Terminal Box	1	1	
72-3	680005	Cup Head Bolt	4	4	
72-4	420070A	Check Valve	1	1	
72-5	209117A	Release Valve Adjusting Rod	1	1	
72-6	209116A	Hydraulic Solenoid Valve Body	1	1	
72-7	209115A	Hydraulic Solenoid Valve Coil	1	1	
72-8	209162A	Hydraulic Solenoid Valve Nut	1	1	
72-9	209100A	Oil Outlet	1	1	
72-10	209110A	Oil Return Port	1	1	
72-11	209106A	Gear Pump	1	1	
72-12	440034	Inlet Pipe	1	1	
Item	Part#	Description	QTY.		Note

			30-SS 1203A	30-SS 1201S	
72-13	209090A	Filter	1	1	
72-14	440035	Washer	4	4	
72-15	440021	Hex Bolt	4	4	
72-16	440027	Filler Cap	1	1	
72-17	440032	Reservoir	1	1	
72-18	440033	Oil Return Pipe	2	2	
72-19	209087A	Socket Bolt	4	4	
72-20	209086A	Lock Washer	4	4	
72-21	209113	Throttle Valve	1	1	
72-22	209085A	Relief Valve	1	1	
72-23	440031	Valve Body	1	1	
72-24	209083A	Motor Connecting Shaft	1	1	
72-25	440016	Running Capacitor	1	1	
72-26	440015	Star Capacitor	1	1	
72-27	440018	Motor Fix Frame	2	2	
72-28	209109	Protecting Ring	2	2	

Parts For Electric Power Unit 380V/50HZ/3 Phase

Item	Part#	Description	QTY.		Note
			30-SS 1203A	30-SS 1201S	
72A-1	440028A	Motor	1	1	
72A-2	440029	Cover of Motor Terminal Box	1	1	
72A-3	209109	Protect Ring	1	1	
72A-4	680005	Cup Head Bolt	4	4	
72A-5	420070A	Check Valve	1	1	
72A-6	209117A	Release Valve Adjusting Rod	1	1	
72A-7	209116A	Hydraulic Solenoid Valve Body	1	1	
72A-8	209115A	Hydraulic Solenoid Valve Coil	1	1	
72A-9	209162A	Hydraulic Solenoid Valve Nut	1	1	
72A-10	209100A	Oil Outlet	1	1	
72A-11	209110A	Oil Return Port	1	1	
72A-12	440025	Gear Pump	1	1	
72A-13	440034	Inlet Pipe	1	1	
72A-14	209090A	Filter	1	1	
72A-15	440035	Washer	4	4	
72A-16	440021	Hex Bolt	4	4	
72A-17	440027	Filler Cap	1	1	
72A-18	440032	Reservoir	1	1	
72A-19	440033	Oil Return Pipe	2	2	
72A-20	209087A	Socket Bolt	4	4	
72A-21	209086A	Lock Washer	4	4	
72A-22	209113	Throttle Valve	1	1	
72A-23	209085A	Relief Valve	1	1	
72A-24	440031	Valve Body	1	1	
72A-25	209083A	Motor Connecting Shaft	1	1	
72A-26	440018	Motor Fix Frame	2	2	



THE CARTEK GROUP
6950 EAST N AVENUE
KALAMAZOO, MI 49048
PH: 269-382-5080
FAX: 269-382-5087
WWW.BEAR-CARTEK.COM
customerservice@cartek.com