

# Guide for Planting Straw Bale Container Garden

Prepared by Adamaah Grayse of Adamaah' s Bedouin Farm

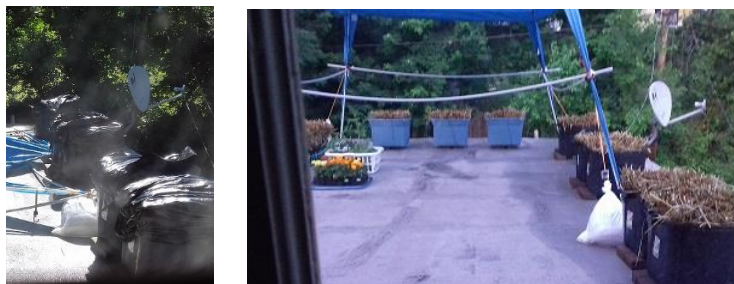
Cost Estimate	Description
\$4-\$12:00	10 to 18 gallon storage bins (usually store seasonal clothing)
\$12.00	Basic landscape fabric (1 roll, good to line several bins)
\$3-\$10:00	one small bale – one bin, one big bale – three bins
\$8-\$15:00	3lb bag of blood meal (good for several bins -1/2 cup per bin)
\$6:00-\$10:00	Fish emulsion fertilizer (good for 2 full growing season)
\$13-\$15.00	8-quart bag of organic potting soil (for vegetables and flowers), good for 3 bins
\$20.00	1 compost thermometer (or meat thermometer)



Drill holes in bottom of bin for drainage, then line with landscape fabric



Place straw in bins (needle side up). Soak straw for 3 days. On fourth day, -treat with bloodmeal tea, then cover with plastic to increase temperature to hasten decomposition process (10 -14 days) keep moist to wet. Temperature needs to rise at least 10 degrees, then goes back down.



Once temperature recedes and mushrooms pop up, good to plant. Separate straw, put enough soil 6-8 inches down, and around sides of where you will sit your seedling plant. Cover seedling with some soil on top around the stem, then some loose straw. Water the new planting after it is set in the straw

## Guide for Planting Straw Bale Container Garden

Water plants everyday, in either the morning or evening if really it is hot in the middle of the day. Even if it rains. Use Organic pest control sprays for plant disease and bugs if needed. (Contact Galanda at [Bytes and Buds](#) for additional consultation). Add bloodmeal tea once more 60-90 days after planting to add nutrients.

Example of bins 3 month after being planted:



One of several harvests from my container rooftop garden



You can pop the top back on and store until the next growing season. All you must do next season is re-water bale, add some more planting soil around new seedling, and you're good to go.

### **Resources:**

Survival HT – Conditioning the Bale – Video (1): <https://youtu.be/VKbejoV9UZE>

Survival HT – Planting Strawbale garden – Video (2): <https://youtu.be/wC0vO3IHucE>

### ***Adamaah Grayse***

Facebook: [Adamaah's Bedouin Farm](#)

Email: [graysenmotion@gmail.com](mailto:graysenmotion@gmail.com)

### ***Galanda A. Bryan***

Facebook: [Bytes and Buds](#)

[www.bytesandbuds.com](http://www.bytesandbuds.com) (blog)