

# DARK HORSE RESOURCES

Value Creators

Lithium & Gold, Argentina





# DISCLAIMER

This presentation is not a prospectus, disclosure document or offering document under Australian law or under any other law. It is for informational purposes only. This document does not constitute, and should not be construed as, an offer to issue or sell or a solicitation of an offer or invitation to subscribe for, buy or sell securities in Dark Horse Resources Limited (DHR).

Any material used in this presentation is only an overview and summary of certain data selected by the management of DHR. The presentation does not purport to contain all the information that a prospective investor may require in evaluating a possible investment in DHR nor does it contain all the information which would be required in a disclosure document prepared in accordance with the requirements of the Corporations Act and should not be used in isolation as a basis to invest in DHR. Recipients of this presentation must make their own independent investigations, consideration and evaluation of DHR. DHR recommends that potential investors consult their professional advisor/s as an investment in DHR is considered to be speculative in nature.

Statements in this presentation are made only as of the date of this presentation unless otherwise stated and the information in this presentation remains subject to change without notice. Reliance should not be placed on information or opinions contained in this presentation.

To the maximum extent permitted by law, DHR disclaims any responsibility to inform any recipient of this presentation on any matter that subsequently comes to its notice which may affect any of the information contained in this document and presentation and undertakes no obligation to provide any additional or updated information whether as a result of new information, future events or results or otherwise.

No representation or warranty, express or implied, is made as to the fairness, accuracy, completeness or correctness of the information, opinions or conclusions contained in or derived from this presentation or any omission from this presentation or of any other written or oral information or opinions provided now or in the future to any person.

To the maximum extent permitted by law, neither DHR nor, any affiliates, related bodies corporate and their respective officers, directors, employees, advisors and agents (Relevant Parties), nor any other person, accepts any liability as to or in relation to the accuracy or completeness of the information, statements, opinions or matters (express or implied) arising out of, contained in or derived from this presentation or any omission from this presentation or of any other written or oral information or opinions provided now or in the future to any person.

This presentation contains certain “forward-looking statements”. The words “expect”, “should”, “could”, “may”, “predict”, “outlook”, “guidance”, “plan” and other similar expressions are intended to identify forward-looking statements. Indications of, and guidance on, future earnings and financial position and performance are also forward-looking statements. Such forward-looking statements are not guarantees of future performance and involve known and unknown risks, uncertainties and other factors, many of which are beyond the control of DHR and the Relevant Parties, that may cause actual results to differ materially from those predicted or implied by any forward-looking statements. DHR makes no representations as to the accuracy or completeness of any such statement of projections or that any projections will be achieved and there can be no assurance that any projections are attainable or will be realized or that actual outcomes will not differ materially from any forward-looking statements.

# A STORY OF VALUE CREATION

**Dark Horse** is a story about:

- Successful, responsible people with exceptional track records
- who have, and are continuously accumulating, strategic mineral assets
- in dynamic geographical and geological environments

A **Company** currently well undervalued:

- Satisfactorily cashed up
- to implement systematic work programs
- to discover and develop tier one mineral resources
- and create value for our shareholders and stakeholder

# STRATEGIC FOCUS

Dark Horse is focussed on the following key strategic commodities and sectors.

## LITHIUM

*Objective produce high grade Lithium Hydroxide for the domestic and international battery and electronic markets by:*

- Aiming to discover and define commercial grade lithium spodumene deposits in Central Argentina, and
- Defining a large lithium brine resource in northern Argentina.

## GOLD

*Objective is the discovery and definition of several multimillion ounce gold deposits by:*

- Targeting epithermal gold systems in proven gold regions and mining friendly provinces in Argentina

## ENERGY

*Objective is to actively play a part in the energy sector by:*

- Participating in the exploration, production and downstream processing of gas; and
- Develop renewable, thermal and energy transportation projects

# DARK HORSE AT A GLANCE

An Australian, publicly listed mineral resource and energy company (**ASX: DHR**).

Dark Horse is a story about successful, responsible people with exceptional track records who have, and are continuously accumulating, strategic mineral assets in dynamic geographical and geological environments.

A company currently well undervalued.



## Lakes Oil NL (31%)

*Victoria, Australia*

- Certified onshore gas resource of 11TCF
- Current moratorium on exploration for gas



## 1. San Jorge Lithium Brine Project (100%)

*Catamarca, Argentina*

- Southern end of “Lithium Triangle”
- Salt flats with high levels of lithium

## 2. Las Opeñas Gold (100%)

*San Juan, Argentina*

- Region host to numerous multi-million-ounce epithermal gold- silver deposits

## 3. Central Argentina Spodumene (100%)

*Cordoba & San Luis, Argentina*

- large portfolio of lithium spodumene projects
- very prospective spodumene bearing pegmatite system

## 4. Cachi Gold Project (95%)

*Santa Cruz, Argentina*

- Recent exploration shown high potential gold bearing epithermal vein systems

# CORPORATE SNAPSHOT



ASX TICKER



MARKET CAP

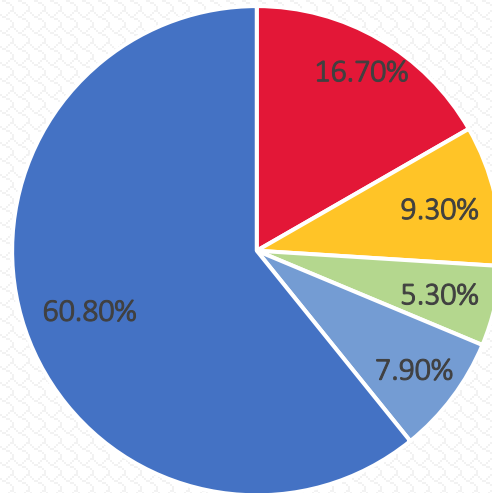


SHARE PRICE

*Equivalent to Lakes Oil holdings alone*

## MAJOR SHAREHOLDERS

- DGR Global
- Neil Stuart
- David Mason (MD)
- Directors & Mgmt
- Other



Dark Horse Resources	
Shares on Issue	1.9 billion
Year Low-High Share Price	AUD 0.004 - 0.027
Cash in Bank	AUD\$800,000
Lakes Oil Value	AUD\$10 million

# WHO WE ARE

**Geo-scientist entrepreneurs.  
Strong track record of discovering great assets, adding value,  
creating wealth**



**NICK MATHER**  
*Chairman*  
*DGR, SolGold*  
*Orbis, Arrow*



**DAVID MASON**  
*Managing Director*  
*New Hope*  
*Adaro, IEC*



**JASON BECKTON**  
*Director*  
*Prospech*  
*Exeter, Chinalco*



**NEIL STUART**  
*Advisor*  
*Cerro Negro*  
*Orocobre*

# WE'RE COMFORTABLY FOCUSED ON ARGENTINA

Safe, secure country, in demand, with good fiscal regime and enormous mineral deposits

## Progressive government

- Pro investment & business
- Significant economic and social achievements
- Working with the communities

## Mining achievements

- Alumbarrera, Orocobre, Veladero, Cerro Negro, Vanguardia





# COMMONALITIES - BBQ'S, MEAT AND FUN





# and..... FOOTBALL STARS

aa-bc.org



AUSTRALIAN-ARGENTINE  
BUSINESS COUNCIL Limited



# COMMONALITIES - ARGENTINA PROVINCES & AUSTRALIAN STATES

- Mineral assets are owned and managed by the provinces.
- Some provinces are pro-mining and some not.
- Dark Horse operates in Catamarca, San Juan, San Luis, Cordoba, Rio Negro and Santa Cruz.
- San Luis, the only province which has a lack of interest in mining development.
- Mining creates great wealth and employment opportunities for the provinces.
- Mining companies abide to international standards of environment, safety and technical sustainability.



# LAS OPEÑAS HIGH GRADE EPITHERMAL GOLD TARGET





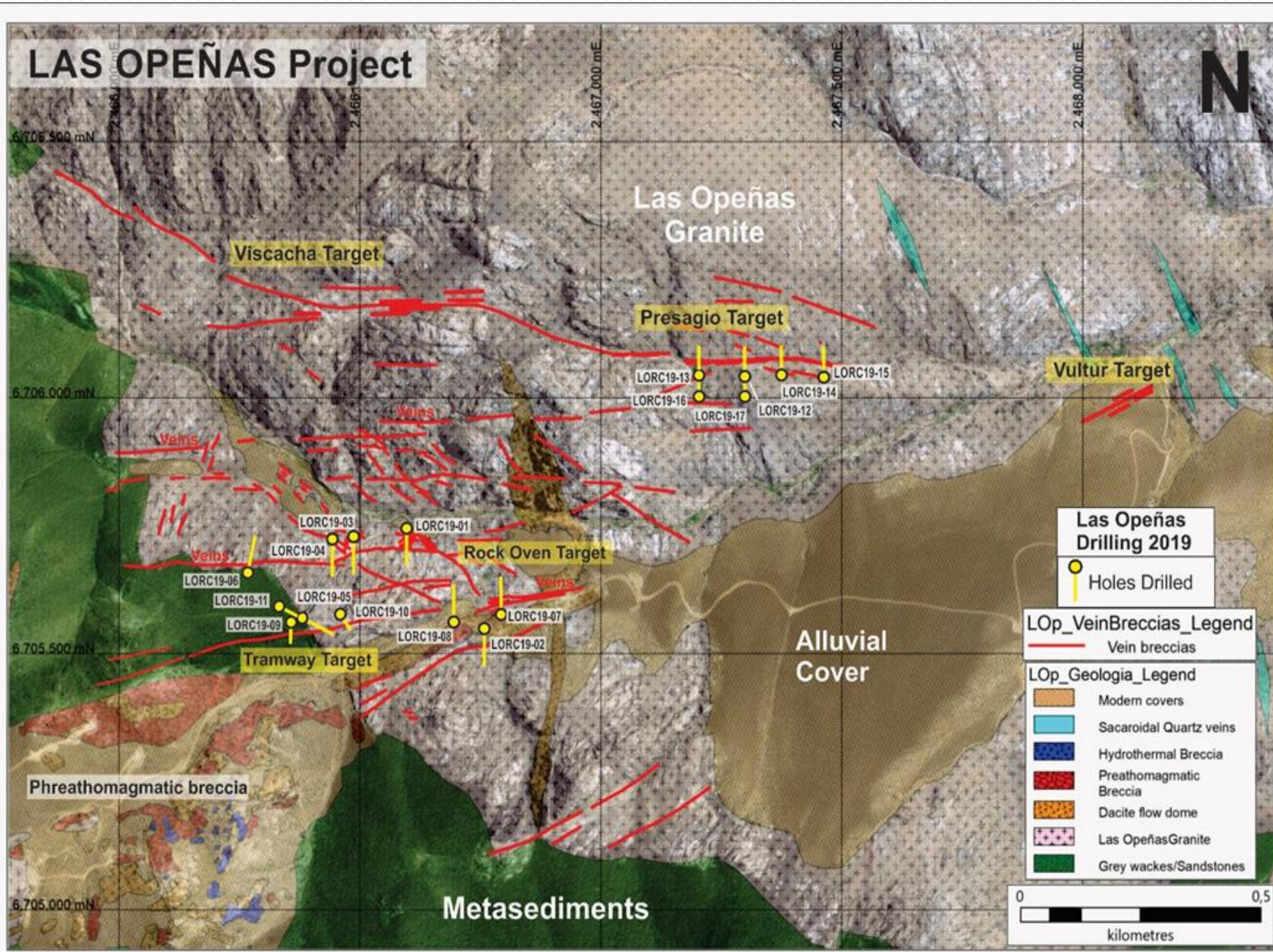
# LAS OPEÑAS GOLD PROJECT

- Las Opeñas located on the north of Cordillera Frontal Belts (Cu, Au, Ag, Mo) in a gold region which is host to numerous, multi-million-ounce epithermal style gold-silver deposits including Veladero (12Moz), Pascua Lama (18Moz), Gualcamayo (2Moz) and Casposo (0.45Moz) in San Juan Province and El Indio (8Moz) in neighbouring Chile.
- In 1910-20's artisanal mine holders took out gold on high grade epithermal veins system in Las Opeñas project
- Extensive historical rock chip sampling veins by Teck Resources (Canada) and Genesis Minerals (Australia) highlight high-grade mineralization; max gold 183.5g/t Au; max silver 6,789g/t Ag





# LAS OPEÑAS VEIN SYSTEMS AND DRILLHOLES



Target - Define thick vein systems over several kilometers extending to depth.

Drill Program – 17 RC holes for 1,536m to test three vein-breccias targets between 50 and 70-meters depth with high gold grade at surface.

## Significant Results\*

LORC-19-12 - Sulphides in breccia From 25 to 33 for 15m

LORC-19-13 - Sulphides in breccia From 22 to 37 for 15m

LORC-19-16 - Sulphides in breccia From 0 to 6 for 6m and 38 to 39m for 7m cumulative

LORC-19-17 - Sulphides in breccia From 47 to 53m and 88 to 92m for 8m cumulative.

*\*DHR ASX release 1 May 2019*



# LAS OPEÑAS RC DRILLING RIG



Vein 15m



# PRESAGIO VEIN OUTCROP – 185 G/T GOLD, 6.5KG/T SILVER\*



\*from previous Teck/Genesis work



# SANTA CRUZ PROVINCE GOLD PROJECT

## Cachi Epithermal Gold Vein

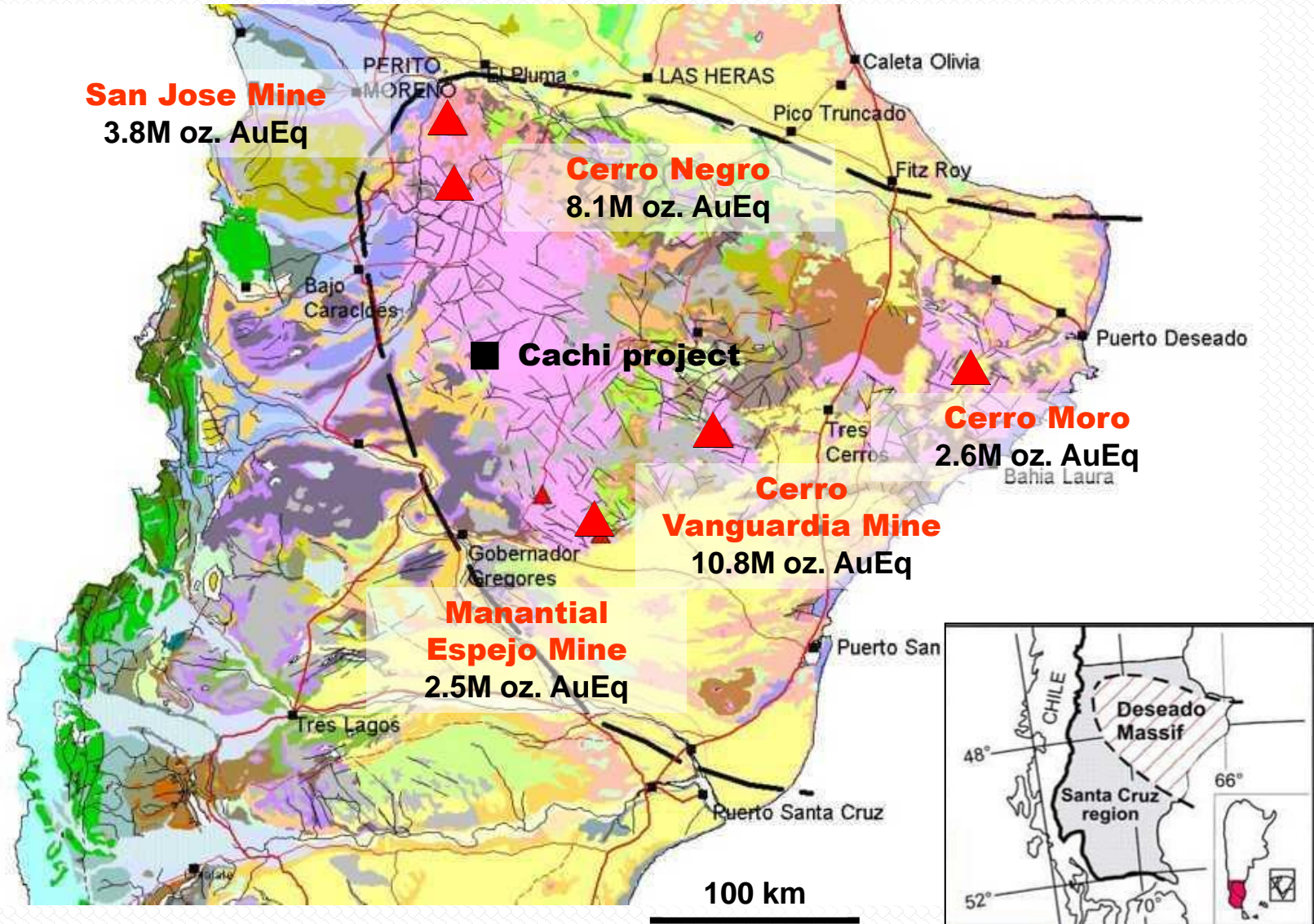
### Deseado Massif





# DESEADO MASSIF- HIGH GRADE EPITHERMAL GOLD PROVINCE

*Host to > 28M Ounces in world class gold deposits*



## DESEADO MASSIF

- Proven gold endowed region with established resources and mines
- Pro-mining jurisdiction - seven mines in the past 15 years

## MULTIPLE COMPANY MAKER DISCOVERIES

- Cerro Negro - Andean Resources acquired by Goldcorp for US\$3.4B in 2010
- Cerro Moro - Extorre Resources acquired by Yamana for C\$413M in 2012
- Cerro Vanguardia – AngloGold



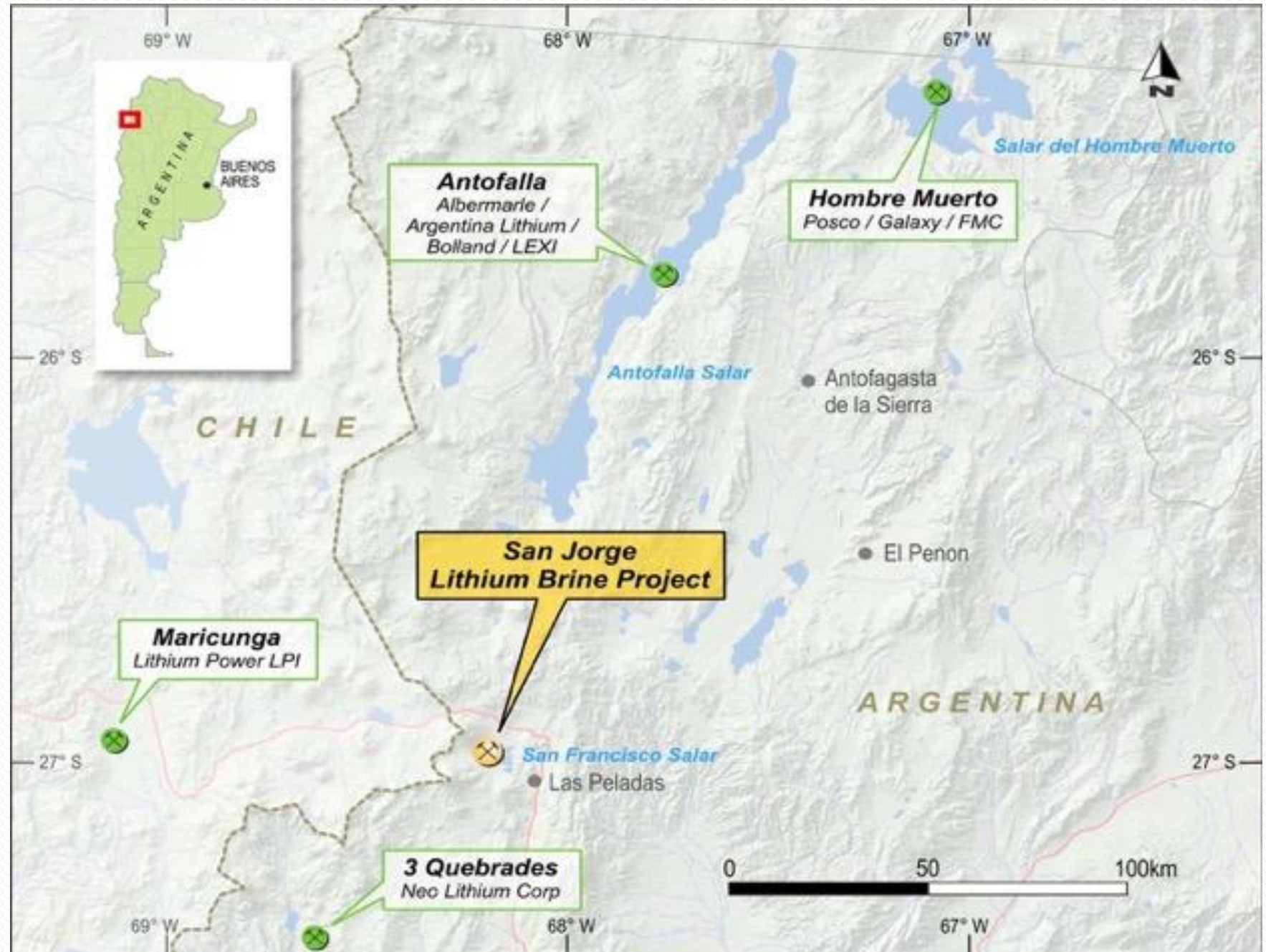
# SAN JORGE LITHIUM PROJECT





# SAN JORGE LITHIUM BRINE

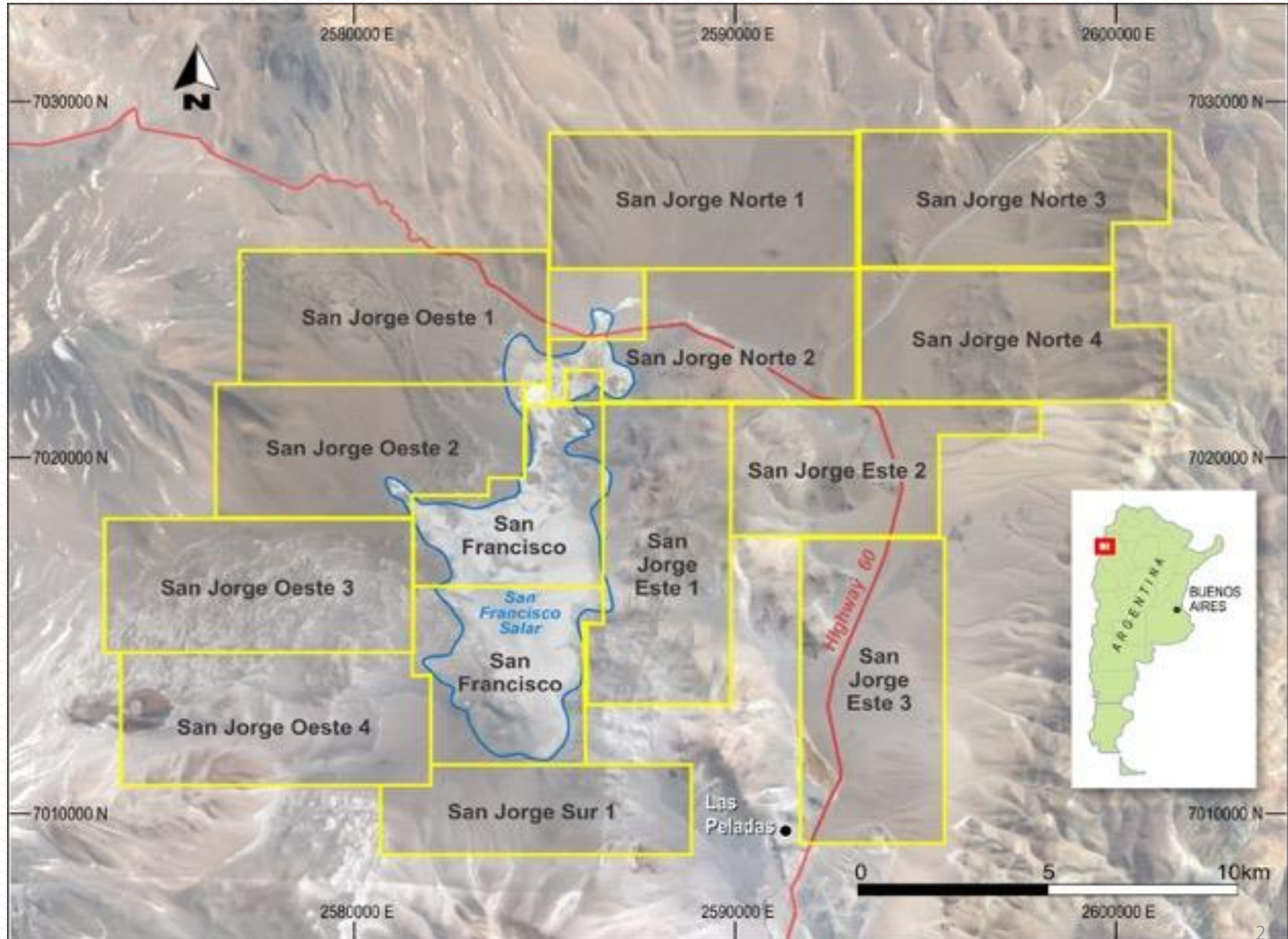
- Location between Maricunga (Chile), 3Q, Antofalla and Hombre Muerto.
- Catamarca supportive of exploration and mining - FMC, Galaxy, Posco and Albemarle.





# SAN JORGE LITHIUM BRINE

- 15 granted EL's  
36,600 hectares  
over the San  
Francisco salar and  
surrounding basin.
- Nucleus of salar is  
7,000 hectares -  
large enough to  
define a world class  
lithium brine  
deposit.





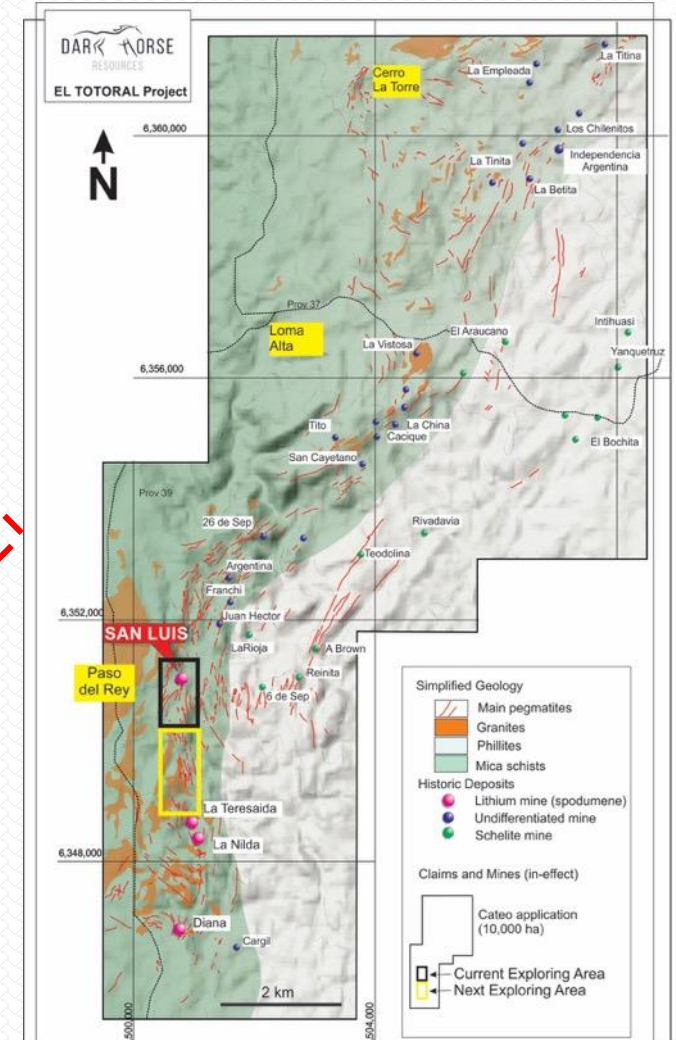
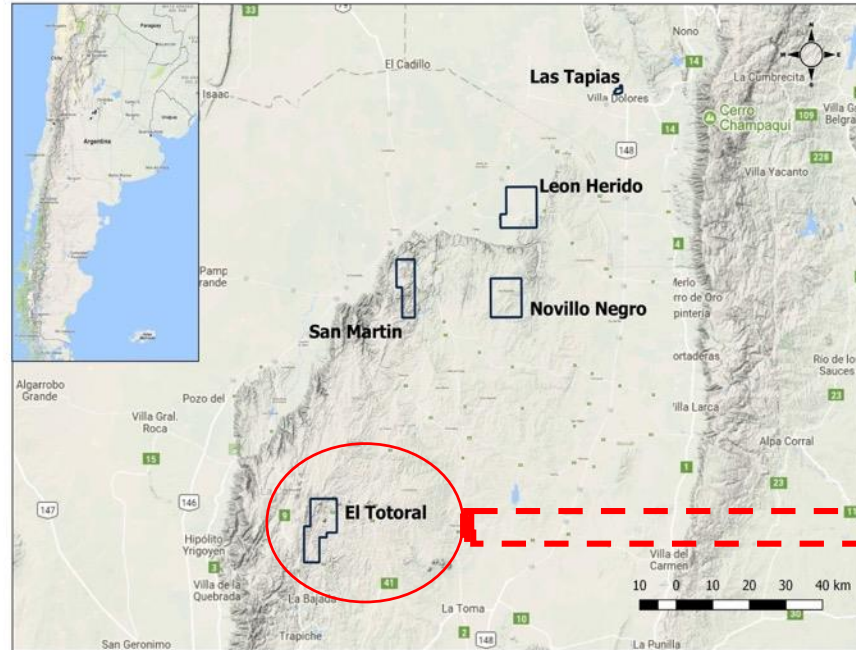


**CENTRAL ARGENTINA  
LITHIUM SPODUMENE**



# CENTRAL ARGENTINA LITHIUM SPODUMENE

Short-term objective is to mine and produce spodumene concentrate from the central Argentinean projects



Extensive portfolio of lithium spodumene projects in the central Argentina provinces of San Luis and Cordoba.

- Las Tapias mining licenses in Cordoba
- El Totoral, San Martin, Novillo Negro and Leon Herido exploration licenses in San Luis,
- **El Totoral** has numerous parallel pegmatites as swarms over a strike length of 6km\*:
  - San Luis Mine area – **1.91%, 1.97%**, 0.81% and 0.44% Li<sub>2</sub>O
  - Central area – 1.13% Li<sub>2</sub>O
  - Southern area – **2.35%**, 1.71%, 0.84%, 0.63% Li<sub>2</sub>O

\*DHR ASX releases 2018



# DARK HORSE ENERGY

- Dark Horse Energy Holdings Pty Ltd (DHE) is a 100% owned subsidiary
- DHE is focussed on the development and investment in energy projects in Australia, Argentina and other parts of the world
- DHE is currently exploring energy development in a number of areas
  - Pumped Hydro Storage
  - Gas fired generation
  - Concentrated Solar Thermal
- Lakes Oil – 31% shareholding worth \$10 million



# TODAY'S TAKEAWAY

- Successful, responsible people
- Strategic mineral assets
- Well undervalued
- Cashed up
- A potential value creating opportunity for investors





**CONTACT US**

**DARKHORSERESOURCES.COM.AU**

-----

**David Mason**

Managing Director

[dmason@darkhorsesresources.com.au](mailto:dmason@darkhorsesresources.com.au)

**Karl Schlobohm**

Company Secretary

[kschlobohm@darkhorsesresources.com.au](mailto:kschlobohm@darkhorsesresources.com.au)

**Dark Horse Resources**

Level 27, 111 Eagle Street Brisbane

07 – 3303 0650

**Twitter:**    [@ASX\\_DHR](https://twitter.com/ASX_DHR)

**Competent Persons Statement**

The information herein that relates to Exploration Targets and Exploration Results is based on information compiled by Mr Jason Beckton, who is a Member of the Australian Institute of Geoscientists. Mr Jason Beckton is a Director of Dark Horse Resources Ltd.

Mr Beckton has more than five years experience which is relevant to the style of mineralisation and type of deposit being reported and to the activity which he is undertaking to qualify as a Competent Person as defined in the 2012 Edition of the 'Australasian Code for Reporting of Exploration Results, Minerals Resources and Ore Reserves' (the JORC Code). This public report is issued with the prior written consent of the Competent Person(s) as to the form and context in which it appears.