


# **Chiltern District Council Community Liaison Forum**

## **Highways Update**

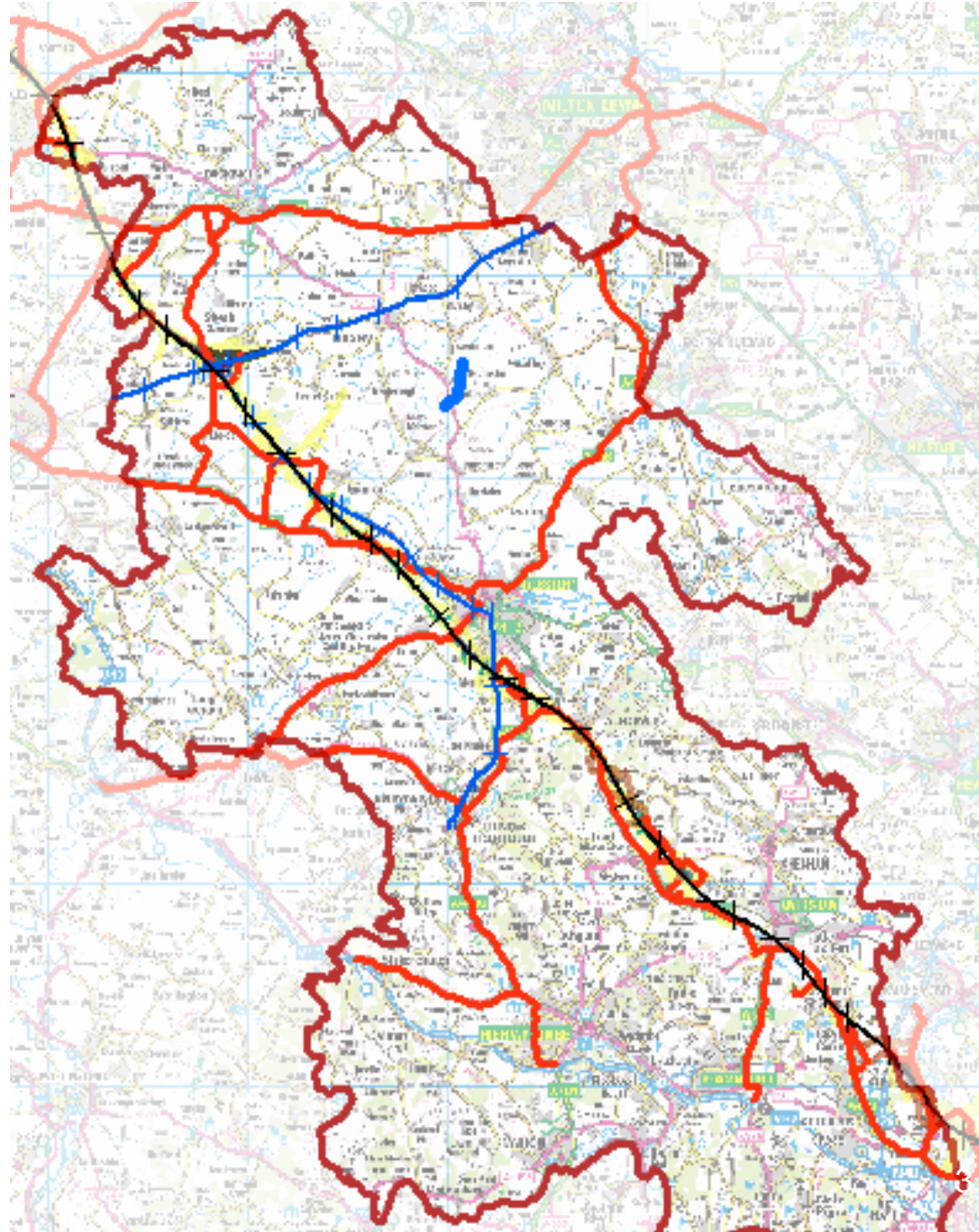
**Rod Black  
Buckinghamshire County Council**

## Key elements

- Current enabling works
  - Safety and Capacity Junctions Assurance
  - Schools Assurance
  - Lorry routes
  - Lorry management systems
  - Next steps
- 

## HS2 Lorry routes

- Major roads through Bucks have been identified as lorry routes for HS2 construction traffic
- *Lorry route* – a road expected to encounter 24 or more LGV (>7.5T) movements per day
- As Highways Authority, we will be asked to formally allow HS2 Ltd and their contractors to access to these routes via Schedule 17 applications
- Detailed design matters regarding permanent and temporary works along the lorry routes will be submitted under Schedule 4 applications



## Current enabling works

- M25 slip roads
- Great Missenden Haul Road and associated highway works
- Ground investigation sites
- Habitat creation sites
- Road condition surveys
- Utilities surveys

## Various control documents

- Code of Construction Practice (CoCP)
- Route-wide Traffic Management Plan
- Local Traffic Management Plans to be developed by Main Works Contractors
- ROMIS – Route Management, Improvement and Safety Plan
- Lorry Route Approvals – Schedule 17s
- Workforce Travel Plans and monitoring

# Suggested measures from the Chesham Society





## Next steps

- Pre-meetings with Main Works Contractors
- Emerging designs
- Impacts on lorry routes
- Integrated approach
- Condition surveys
- Direct signage to worksites