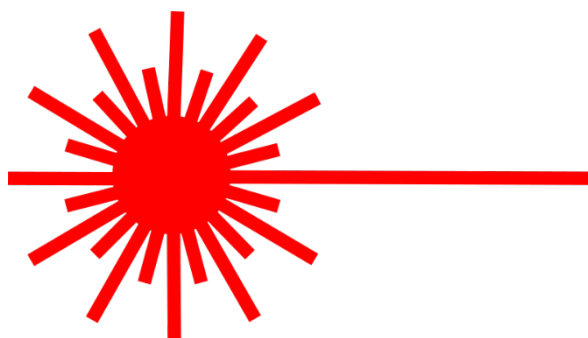


# **2018 Oceania and Australian Laser Masters Championships**

## **Sailing Instructions**

**9-12 February 2018**



**Organising Authority**

**Maroochy Sailing Club**

Chambers Island Maroochydore 4558.

On behalf of the

**QUEENSLAND LASER ASSOCIATION INC.**

**AUSTRALIAN LASER CLASS ASSOCIATION**

**OCEANIA LASER CLASS ASSOCIATION**

**The notation of '[DP]' in a rule in the SI means that the penalty for a breach of that rule may, at the discretion of the protest committee, be less than disqualification.**

## **1 RULES**

- 1.1** The regatta will be governed by the rules as defined in *The Racing Rules of Sailing RRS*.
- 1.2** The prescriptions and special regulations of Australia Sailing(AS).Part 2 will apply.
- 1.3** The rules and by-laws of the International Laser Class Association (ILCA) will apply.
- 1.4** Appendix T Arbitration will apply

## **2 NOTICES TO COMPETITORS**

Notices to competitors will be posted on the official notice board in the breezeway between the SCYC rooms and Pier 33.

## **3 CHANGES TO SAILING INSTRUCTIONS**

Any change to the sailing instructions will be posted no later than 2 hours before the earliest warning signal on the day it will take effect, except that any change to the schedule of races will be posted by 1900 on the day before it will take effect.

## **4 SIGNALS MADE ASHORE**

- 4.1** Signals made ashore will be displayed official flag pole located in the grassed rigging area adjacent to the Marina office.
- 4.2** When flag AP is displayed ashore, '1 minute' is replaced with 'not less than 45 minutes' in the race signal AP.

## **5 SCHEDULE OF RACES**

- 5.1** The schedule of races is as per the following table:

<b>DATE</b>	<b>EVENT</b>	<b>TIME/WARNING SIGNAL</b>
<b>Friday, 9/2/18</b>	Registration	0900 - 1100
	Competitors Meeting	1130
	Race 1 Race 2	1330 ASAP after Race 1
	Welcome nibbles upstairs at Pier 33	After Sailing
<b>Saturday 10/2/18</b>	Race 3 Race 4 Race 5	1200 ASAP after Race 3 ASAP after Race 4
	<b>Saturday Night Dinner</b> Maroochy RSL. First Ave Maroochydore	1900
<b>Sunday 11/2/18</b>	Race 6 Race 7 Race 8	1200 ASAP after Race 6 ASAP after Race 7
<b>Monday 12/2/18</b>	Race 9 Race 10	1100 ASAP after Race 9
	Presentation of Prizes and Barbeque	ASAP after completion of sailing

**5.2** To alert boats that a race or sequence of races will begin soon, the orange starting line flag will be displayed with one sound at least five minutes before a warning signal is made.

**5.3** On the last day of the regatta no warning signal will be made after 1500 hours.

## **6 FLEET FLAGS**

**6.1**

<b>Combined Categories</b>	<b>Fleet Flags</b>
Radial App Master, Master & Grand Master	Green flag with a red Laser emblem over Numeral Pennant One
Radial Great Grand Master and Legends	Green flag with a red Laser emblem over Numeral Pennant Two
Standard App Master & Master and 4.7's	White flag with a red Laser emblem over Numeral Pennant One
Standard Grand Master, Great Grand Master	White flag with a red Laser emblem over Numeral Pennant Two

**6.1**

### **6.2 IDENTIFICATION**

**6.3** While racing boats shall display a coloured band issued at registration. For Standard and

**6.4** Radial Lasers the colour band shall corresponding to the boat's category. The 4.7 Division

**6.5** colour will be orange. The band shall be placed on the mast bottom section between the vang

**6.6** fitting and the boom.

**6.7** Colours are:

- Apprentice Masters - Red
- Masters - White
- Grand Masters - Yellow
- Great Grand Masters - Blue
- 4.7 - Orange

## **7 RACING AREAS**

**7.1** The course area will be on Mooloolaba Bay, approximately east of Alexandra headland and North of Mooloolaba harbour entrance. See Attachment A

## **8 THE COURSES**

**8.1** The diagrams in Attachment B show the courses, including the order in which marks are to be passed, and the side on which each mark is to be left.

**8.2** No later than the warning signal, the race committee signal boat will display the course to be sailed by each division and the approximate compass bearing of the first leg.

## **9 MARKS**

**9.1** Marks are described in Attachment B.

## **10 THE START**

**10.1** The starting line will be between a staff displaying an orange flag on the start vessel at the starboard end and the course side of the port-end starting mark.

- 10.2** Boats whose warning signal has not been made shall avoid the starting area during the starting sequence for other races. [DP]
- 10.3** A boat that does not start within five (5) minutes after her starting signal will be scored Did Not Start without a hearing. This changes RRS A4 and A5.

## **11 CHANGE OF THE NEXT LEG OF THE COURSE**

- 11.1** To change the next leg of the course, the race committee will move the original mark (or the finishing line) to a new position.

## **12 THE FINISH**

- 12.1** The finishing line will be between a staff displaying a blue flag on the finishing boat at the port end and the course side of the starboard-end finishing mark.

## **13 TIME LIMITS AND TARGET TIMES**

- 13.1** Target time for all races is 45 minutes
- 13.2** Time limits for all races shall be 60 minutes.
- 13.3** Boats failing to finish within 15 minutes after the first boat in their category sails the course and finishes will be scored Did Not Finish without a hearing. This changes RRS 35, A4 and A5.

## **14 PROTESTS AND REQUESTS FOR REDRESS**

- 14.1** Protest forms are available at the Sailing Office. Protests and requests for redress or reopening shall be delivered there within the appropriate time limit.
- 14.2** For each division, the protest time limit is 60 minutes after the last boat has finished the last race of the day or the race committee signals no more racing today, whichever is later.
- 14.3** Notices will be posted no later than 30 minutes after the protest time limit to inform competitors of hearings in which they are parties or named as witnesses. Hearings will be held in the protest room specified on the notice board beginning at the time posted.
- 14.4** Notices of protests by the race committee, technical committee or protest committee will be posted to inform boats under RRS 61.1(b).
- 14.5** Breaches of instructions 10.2, 13.1, 17 and 22 will not be grounds for a protest by a boat. This changes RRS 60.1(a). Penalties for these breaches may be less than disqualification if the protest committee so decides.
- 14.6** On the last scheduled day of racing a request for redress based on a protest committee decision shall be delivered no later than 30 minutes after the decision was posted. This changes RRS 62.2.

## **15 ARBITRATION**

Appendix T of the RRS shall apply

## **16 SCORING**

- 16.1** Races will be scored as overall fleets for Standard, Radial and 4.7 with category prizes determined using overall fleet position results.
- 16.2** Four races are required to be completed to constitute a series.
- (a) When fewer than five races have been completed, a boat's series score will be the total of her race scores.
- (b) When from five to eight races have been completed, a boat's series score will be the total of her race scores excluding her worst score.
- (c) When nine or more races have been completed, a boat's series score will be the total of her race scores excluding her worst two scores.

## **17 SAFETY REGULATIONS**

- 17.1** All skippers shall SIGN ON before racing each day and SIGN OFF at the earliest possible time after the completion of racing (but not later than the end of protest time). The skipper of a boat that retires or does not intend to continue racing is required to SIGN OFF immediately on return to shore. [DP]

- 17.2** A boat that retires from a race shall notify the race committee as soon as possible. [DP]
- 17.3** Competitors shall comply with with the following harbour bylaws:
- (a) All sailing vessels shall give way to powered vessels at all times whilst inside the Boat Harbour.
  - (b) Once outside the Boat Harbour, competitors are to as soon as possible stay outside of the main channel, keeping clear of powered vessels.
- 17.4** Boats requiring towing assistance shall not enter the harbour mouth until safely tethered to tow vessel. [DP]
- 17.5** Boats failing to comply with SI17 may be protested by the Race Committee and receive a penalty less than DSQ as decided by the Protest Committee. This changes RRS 64.1, A4 and A5.

## **18 REPLACEMENT OF CREW OR EQUIPMENT**

Substitution of damaged or lost equipment will not be allowed unless authorized by the race committee. Requests for substitution shall be made to the committee at the first reasonable opportunity. [DP]

## **19 EQUIPMENT AND MEASUREMENT CHECKS**

A boat or equipment may be inspected at any time for compliance with the class rules and sailing instructions. On the water, a boat can be instructed by a race committee equipment inspector or measurer to proceed immediately to a designated area for inspection.

## **20 OFFICIAL BOATS**

Official boats will be marked with a white flag with the letters RC in black text.

## **21 TRASH DISPOSAL**

Trash may be placed aboard support or official boats. Competitors may be protested for disposing of trash into the water. [DP]

## **22 RADIO COMMUNICATION**

Except in an emergency, a boat that is racing shall not make voice or data transmissions and shall not receive voice or data communication that is not available to all boats. [DP]

## **23 PRIZES**

Prizes and trophies will be awarded in each competing Category with sufficient entries.

## **24 DISCLAIMER OF LIABILITY**

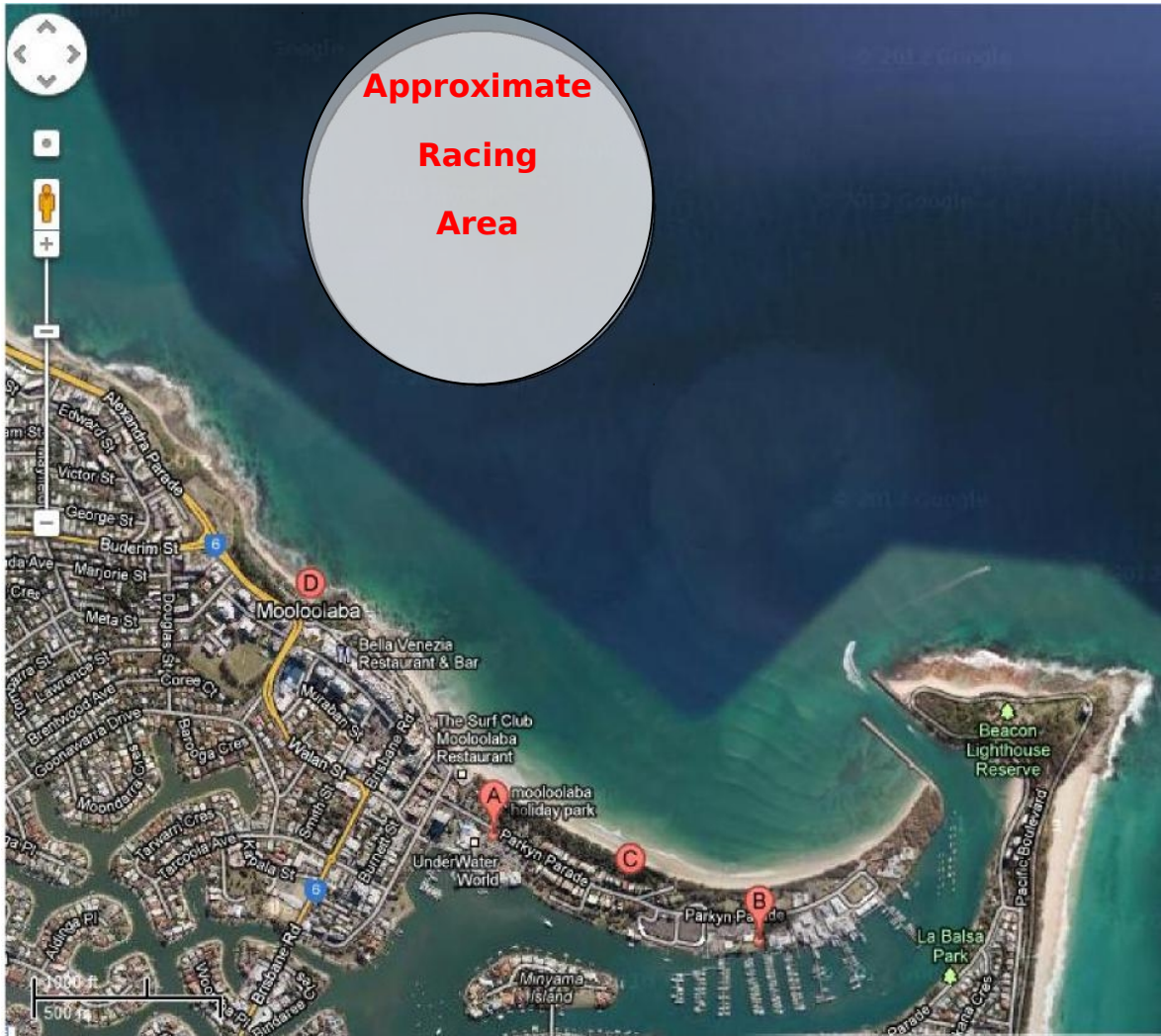
Competitors participate in the regatta entirely at their own risk. See RRS 4, Decision to Race. The organizing authority will not accept any liability for material damage or personal injury or death sustained in conjunction with or prior to, during, or after the regatta.

## **25 INSURANCE**

Each participating boat shall be insured with valid third-party liability insurance with a minimum cover of \$10,000,000AUD per incident or the equivalent.

**Special Note: - ALL** competitors are requested to avoid parking in the car park owned and operated by Pier 33 and Marina Businesses. Your assistance is appreciated. See NOR for parking options.

# Attachment A – Approximate Racing Area



## Attachment B – Courses

Designation	Course	Marks
<b>I2</b>	Start - 1 - 4S/4P - 1 - 2 - 3P - Finish	<b>Marks 1, 4s &amp; 4p</b> - yellow inflatable <b>Marks 2, 3s &amp; 3p</b> - orange inflatable <b>Start &amp; Finish</b> - orange
<b>O1</b>	Start - 1 - 2 - 3P - Finish	
<b>O2</b>	Start - 1 - 2 - 3S/3P - 2 - 3P - Finish	

