



## ASX ANNOUNCEMENT

6 November 2018

### AVZ Drills 221.83m\* @ 1.53% Li<sub>2</sub>O & 848ppm Sn from 165.2m down-hole at the Roche Dure Pegmatite

#### HIGHLIGHTS

- AVZ's extensional drilling at Roche Dure has identified additional high-grade lithium and tin mineralisation; this will be included in the Company's revised Mineral Resource calculation.
- Extensional drilling has continued to confirm the initial drilling results and homogenous nature of the deposit. As such drilling is tailing off as planned, with our focus now on moving ahead to the definitive feasibility study (DFS).
- Bulk metallurgical sampling program nearing completion. Sample to be transported to Perth by end of November.
- AVZ is on-track for delivery of 5 million tonne per annum ("Mtpa") & 10 Mtpa scoping studies.
- MO18DD058 intersected 31.63m\* @ 1.80% Li<sub>2</sub>O & 772ppm Sn from 58.29m down-hole followed by 171.55m\* @ 1.69% Li<sub>2</sub>O & 858ppm Sn from 101.92m down-hole on drill section 7700mN
- MO18DD059 intersected 221.83m\* @ 1.53% Li<sub>2</sub>O & 848ppm Sn from 165.2m down-hole on drill section 6900mN
- MO18DD061 intersected 87.29m\* @ 1.57% Li<sub>2</sub>O & 947ppm Sn from 75.71m down-hole on drill section 7700mN
- MO18DD062 intersected 80.0m\* @ 1.25% Li<sub>2</sub>O & 883ppm Sn from 174.0m down-hole on drill section 6600mN

\* Down-hole length. Additional drilling is required to confirm the true-thickness of the pegmatites.

#### AVZ Minerals Limited

Level 2, Suite 9  
389 Oxford Street  
Mt Hawthorn, WA 6016  
Australia

T: + 61 8 6117 9397

F: + 61 8 6117 9330

E: [admin@avzminerals.com.au](mailto:admin@avzminerals.com.au)

W: [www.avzminerals.com](http://www.avzminerals.com)

ABN 81 125 176 703

#### Directors

Managing Director: Nigel Ferguson  
Technical Director: Graeme Johnston  
Non-Executive Director: Rhett Brans  
Non-Executive Director: Honliang Chen  
Non-Executive Director: Guy Loando

#### Issued Capital

1,888 M Ordinary Shares

#### Market Cap

\$157 M

ASX Code: AVZ

**AVZ's Managing Director Mr Nigel Ferguson commented:** *“Step out drilling at Roche Dure continues to demonstrate strong lithium mineralisation to the NW of Roche Dure close to the ground surface on new section 7700mN. A bulk sample currently being drilled across the orebody in vertical PQ diameter cored holes will be sent to Perth for exhaustive metallurgical tests, including tin and tantalum recoveries. This bulk sampling programme commenced in mid-October and is expected to be completed in mid-November with the samples being sent to Nagrom in Perth as soon as practicable, thereafter.*

*Lithium, tin and tantalum recoveries and other tests required for process plant design studies will be carried out on this bulk sample as well as the possible production of batches of concentrate for potential offtake partners. Apart from deeply weathered hole MO18DD060 in the SW, the assays from the remaining 6 drill holes again show excellent lithium mineralisation.*

*We are very happy that the scale of the Roche Dure mineralisation continues to grow and we look forward to releasing an updated Mineral Resource Estimate for Manono before the end of the year.”*

**AVZ Minerals Limited** (ASX: AVZ) **“AVZ”** or **“the Company”** is pleased to report it has received further high-grade results from its Mineral Resource drilling at the Manono Lithium Project in the Democratic Republic of Congo. It has received results from a further seven diamond drill holes, none of which were included in the Maiden JORC Mineral Resource estimate reported in early August 2018.

### **Drilling progress**

The grades of some of the pegmatite intervals in the new infill holes (Figure 1) show some areas of deeper weathering to the SW but with corresponding apparent elevated tin and tantalum grades with a maximum value of 30,508ppm Sn recorded in hole MO18DD057 at the footwall contact. To the NW however there is fresh, strongly mineralised lithium rich pegmatite close to the surface on section 7700mN although the orebody seems to be steepening and thinning to approximately 200 metres thick\* towards the NW end of Roche Dure. Again, there appears to be no zonation in the pegmatite intersected by these seven new holes. Figures 2 to 4 show these intervals schematically.

AVZ's main step out drilling programme is expected to be completed late in November, with an update to the Mineral Resource Estimate for Manono due before the end of the year. There will be some later drilling to firm up geological interpretations as well as flatter holes under the flooded pit to increase levels of confidence in the resource beneath the flooded pit-floor but these are not expected to increase the tonnages significantly.

\* Down-hole length. Additional drilling is required to confirm the true-thickness of the pegmatites.

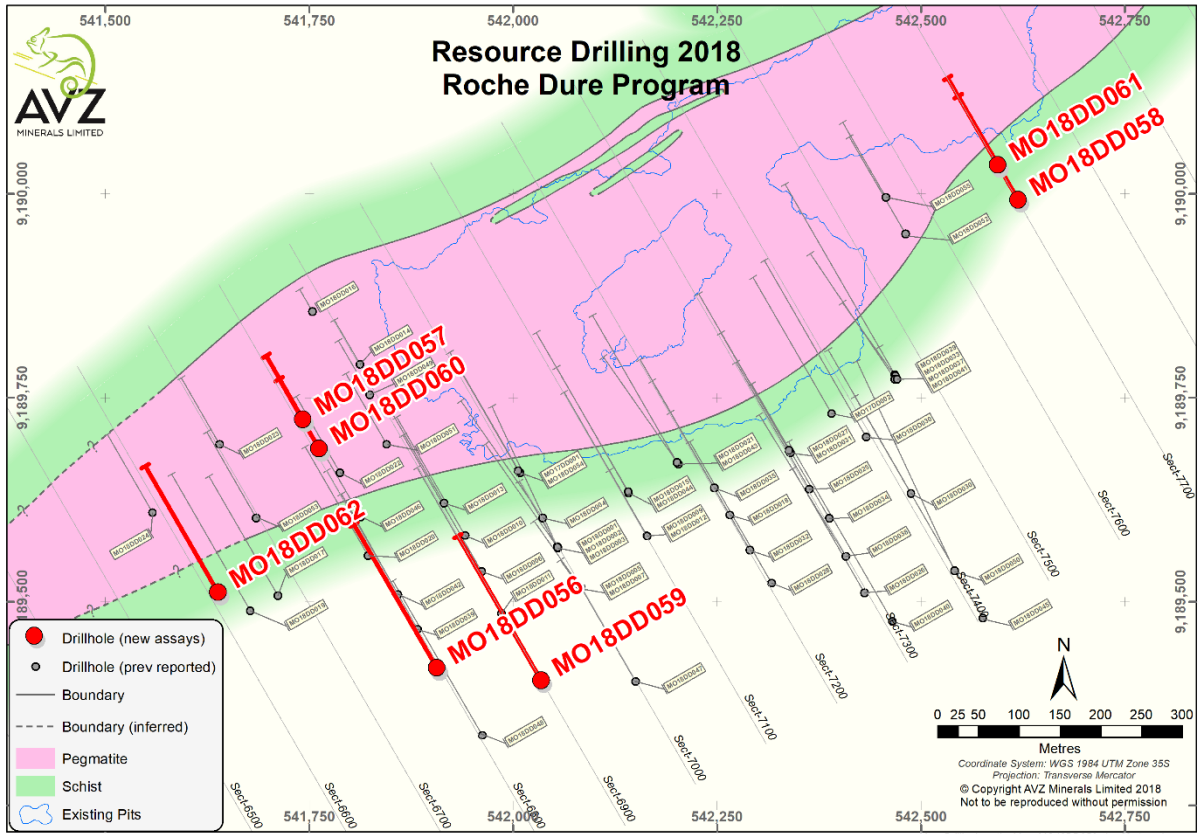


Figure 1: Location of drill-holes MO18DD056 - MO18DD062

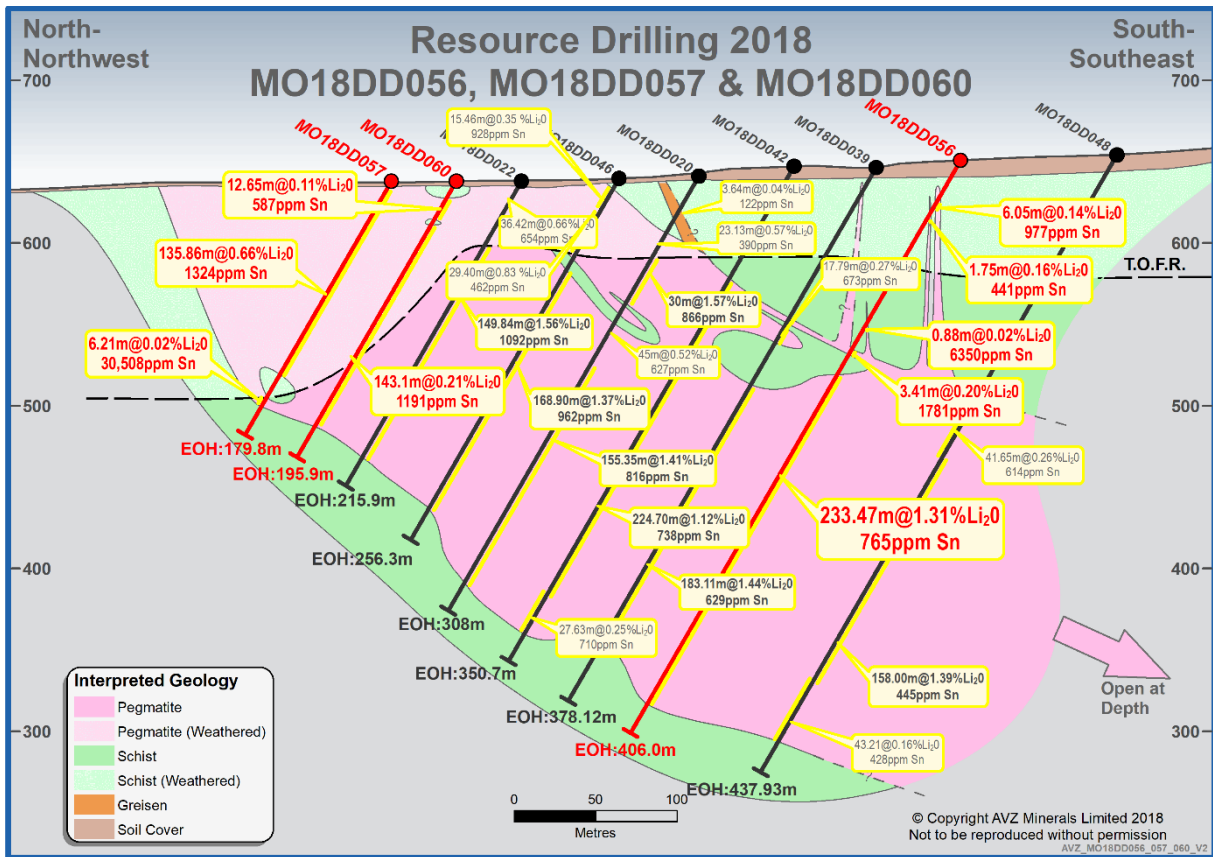


Figure 2: Cross-section showing MO18DD056, MO18DD057 and MO18DD060 on 6800mN

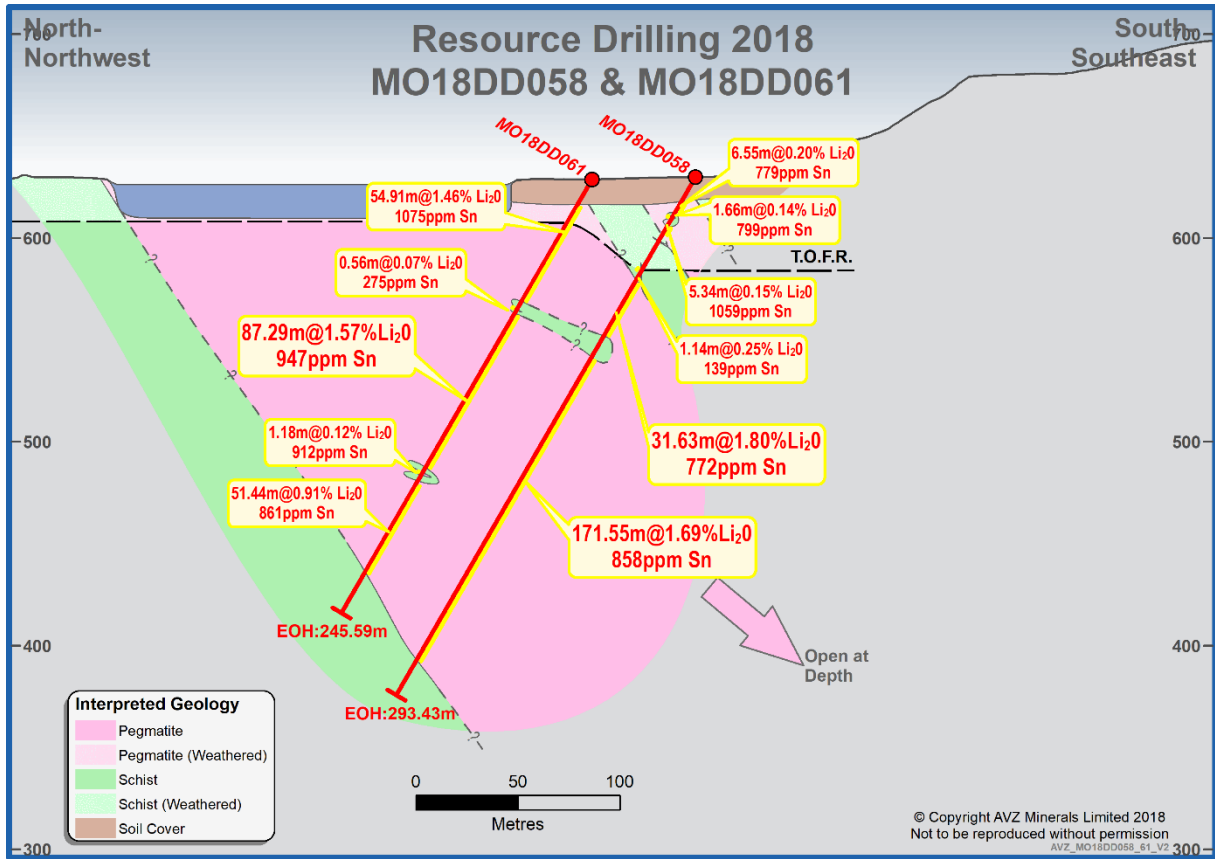


Figure 3: Cross-section showing MO18DD058 and MO18DD061 on 7700mN

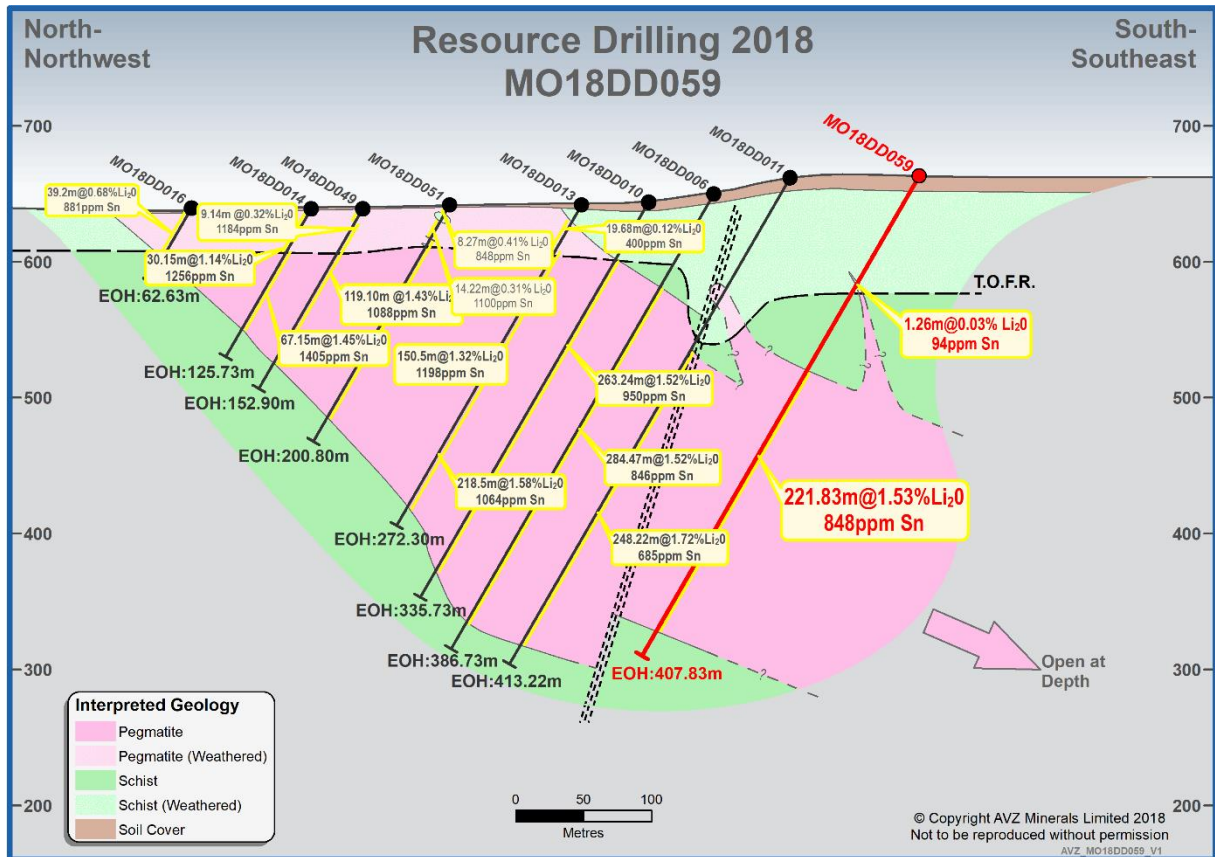


Figure 4: Cross-section showing MO18DD059 on 6900mN

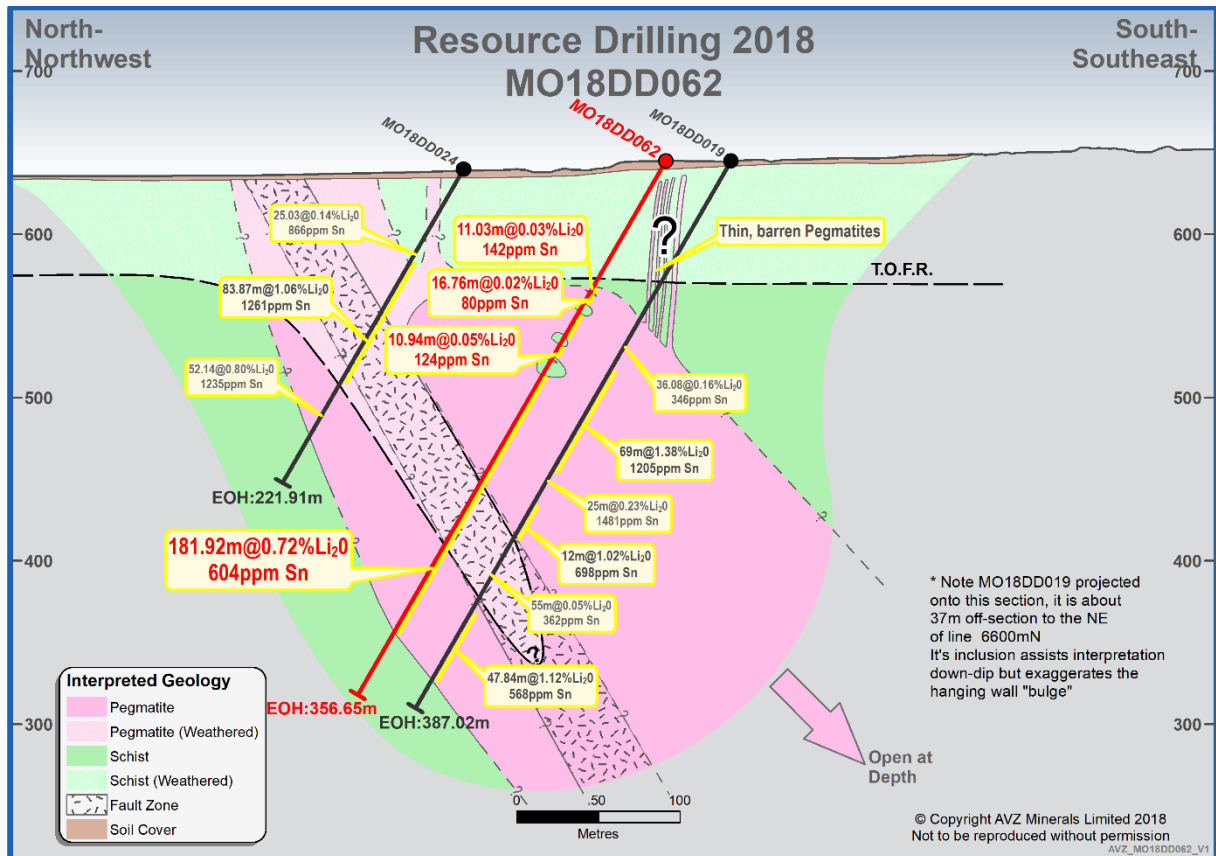


Figure 5: Cross-section showing MO18DD062 on 6600mN

Hole I.D.	Section	Intersections of the Roche Dure pegmatite
MO18DD056	6800mN	<p>24.75m – 30.8m; 6.05m @ 0.14%Li<sub>2</sub>O &amp; 977ppm Sn (with 4.64m of core loss)</p> <p>36.6m – 38.35m; 1.75m @ 0.16%Li<sub>2</sub>O &amp; 441ppm Sn (with 0.23m of core loss)</p> <p>115.12m – 116m; 0.88m @ 0.02%Li<sub>2</sub>O &amp; 6,350ppm Sn</p> <p>134.19m – 137.6m; 3.41m @ 0.20%Li<sub>2</sub>O &amp; 1,781ppm Sn</p> <p><b>151.98m – 385.45m; 233.47m @ 1.31%Li<sub>2</sub>O &amp; 765ppm Sn (with 0.14m of core loss)</b></p>
MO18DD057	6800mN	<p>1.5m – 137.36m; 135.86m @ 0.66%Li<sub>2</sub>O &amp; 1,324ppm Sn (with 3.35m of core loss)</p> <p>153.64m – 159.85m; 6.21m @ 0.02%Li<sub>2</sub>O &amp; 30,508ppm Sn</p>
MO18DD058	7700mN	<p>13.9m – 20.45m; 6.55m @ 0.20%Li<sub>2</sub>O &amp; 779ppm Sn (with 2.2m of core loss)</p> <p>21.9m – 23.56m; 1.66m @ 0.14%Li<sub>2</sub>O &amp; 799ppm Sn</p> <p>27.5m – 32.84m; 5.34m @ 0.15%Li<sub>2</sub>O &amp; 1,059ppm Sn (with 1.35m of core loss)</p> <p>52.6m – 53.74m; 1.14m @ 0.25%Li<sub>2</sub>O &amp; 139ppm Sn</p> <p><b>58.29 m – 89.92 m; 31.63 m @ 1.80 %Li<sub>2</sub>O &amp; 772 ppm Sn</b></p> <p><b>101.92 m – 273.47 m; 171.55 m @ 1.69 %Li<sub>2</sub>O &amp; 858 ppm Sn</b></p>
MO18DD059	6900mN	<p>90.82m – 92.08m; 1.26m @ 0.03%Li<sub>2</sub>O &amp; 94ppm Sn</p> <p><b>165.2m – 387.03m; 221.83m @ 1.53%Li<sub>2</sub>O &amp; 848ppm Sn</b></p>
MO18DD060	6800mN	<p>12.35m – 25m; 12.65m @ 0.11%Li<sub>2</sub>O &amp; 587ppm Sn (with 2.1m of core loss)</p> <p>31m – 174.1m; 143.1m @ 0.21%Li<sub>2</sub>O &amp; 1,191ppm Sn (with 7.78m of core loss)</p>
MO18DD061*	7700mN	<p>14.12m – 69.03m; 54.91m @ 1.46%Li<sub>2</sub>O &amp; 1,075ppm Sn (with 0.68m of core loss)</p> <p>73.5m – 74.06m; 0.56m @ 0.07%Li<sub>2</sub>O &amp; 275ppm</p> <p><b>75.71m – 163m; 87.29m @ 1.57%Li<sub>2</sub>O &amp; 947ppm</b></p> <p>166.14m – 167.32m; 1.18m @ 0.12%Li<sub>2</sub>O &amp; 912ppm</p>

		170.8m – 222.24m; 51.44m @ 0.91%Li <sub>2</sub> O & 861ppm Sn (with 0.29m of core loss)
<b>MO18DD062</b>	6600mN	89m – 100.03m; 11.03m @ 0.03%Li <sub>2</sub> O & 142ppm Sn (with 2.03m of internal waste)  107.29m – 124.05m; 16.76m @ 0.02%Li <sub>2</sub> O & 80ppm Sn  130.06m – 141m; 10.94m @ 0.05%Li <sub>2</sub> O & 124ppm Sn (with 1.42m of internal waste)  151.45m – 333.37m; 181.92m @ 0.72%Li <sub>2</sub> O & 604ppm Sn (including 174m-254m; 80m @ 1.25%Li <sub>2</sub> O & 883ppm Sn)

**Table 1: Intersections achieved by MO18DD056, 057, 058, 059, 060, 061 and MO18DD062**

\* - One CRM (sample 38025) in the batch containing the samples for MO18DD061, marked as GTA-04 plotted outside the accepted  $-3xSD$  but falls within the limits of GTA-06. All other QC samples fall within acceptable limits for this batch and this failure is interpreted as an incorrectly captured CRM into the database. Additional testwork is in progress to confirm this.

For further information, visit [www.avzminerals.com.au](http://www.avzminerals.com.au) or contact:

**Mr. Leonard Math**  
**Company Secretary**  
**AVZ Minerals Limited**  
**Phone: +61 8 6117 9397**  
**Email: [admin@avzminerals.com.au](mailto:admin@avzminerals.com.au)**

### **Competent Persons Statement**

*The information in this report that relates to geology and the exploration results is based on information compiled by Mr. Michael Cronwright, a Competent Person whom is a fellow of The Geological Society of South Africa and Pr. Sci. Nat. (Geological Sciences) registered with the South African Council for Natural Professions. Mr. Cronwright is a full-time employee of The MSA Group Pty Ltd. Mr Cronwright has sufficient experience that is relevant to the style of mineralisation and type of deposit under consideration and to the activity being undertaken to qualify as a Competent Person as defined in the 2012 Edition of the 'Australasian Code for Reporting of Exploration Results, Mineral Resources and Ore Reserves'. Mr. Cronwright consents to the inclusion in the report of the matters based on his information in the form and context in which it appears.*

## Appendix 1

Collar Table for holes *MO18DD56, 057, 058, 059, 060, 061 and MO18DD062*

Drill Hole_ID	Drilling Method	Section Line	Easting (mE)	Northing (mN)	Elevation (m)	Datum	Zone	Dip (degrees)	Azimuth (mag degrees)	EOH (m)
MO18DD056	DDH	6800mN	541906.0	9189420.9	649.9	WGS-84	35M	-60	330	406.00
MO18DD057	DDH	6800mN	541742.3	9189724.8	636.0	WGS-84	35M	-60	330	179.80
MO18DD058	DDH	7700mN	542618.9	9189993.9	629.1	WGS-84	35M	-60	330	293.43
MO18DD059	DDH	6900mN	542035.5	9189404.4	653.1	WGS-84	35M	-60	330	407.83
MO18DD060	DDH	6800mN	541761.5	9189689.2	636.9	WGS-84	35M	-60	330	195.90
MO18DD061	DDH	7700mN	542594.6	9190037.2	628.5	WGS-84	35M	-60	330	245.59
MO18DD062	DDH	6600mN	541637.6	9189512.3	645.8	WGS-84	35M	-60	330	356.65

\* Positions of holes MO18DD056, 057, 058, 059, 060, 061 and 062 are Differential GPS positions

## Appendix 2

Down-hole Survey Table *MO18DD56, 057, 058, 059, 060, 061 and MO18DD062*

Hole_ID	Depth	Inclination	Azimuth	Hole_ID	Depth	Inclination	Azimuth
MO18DD056	0	-60	330	MO18DD059	210	-57	328
MO18DD056	30	-60	330	MO18DD059	240	-57	328
MO18DD056	60	-60	330	MO18DD059	270	-53	328
MO18DD056	90	-60	330	MO18DD059	300	-51	327
MO18DD056	120	-59	330	MO18DD059	330	-48	327
MO18DD056	150	-60	329	MO18DD059	360	-49	327
MO18DD056	180	-58	329	MO18DD059	390	-46	328
MO18DD056	210	-57	329	MO18DD059	405	-46	328
MO18DD056	240	-56	328	MO18DD060	0	-60	330
MO18DD056	270	-54	330	MO18DD060	30	-61	330
MO18DD056	300	-53	329	MO18DD060	60	-62	333
MO18DD056	330	-51	329	MO18DD060	90	-62	332
MO18DD056	360	-50	330	MO18DD060	120	-62	316
MO18DD056	390	-48	330	MO18DD060	150	-61	332
MO18DD056	405	-48	330	MO18DD060	180	-61	332
MO18DD057	0	-60	330	MO18DD060	194	-61	331
MO18DD057	30	-61	327	MO18DD061	0	-60	330
MO18DD057	60	-60	329	MO18DD061	30	-60	328
MO18DD057	90	-60	329	MO18DD061	60	-59	330
MO18DD057	120	-60	329	MO18DD061	90	-59	329
MO18DD057	150	-60	330	MO18DD061	120	-58	331
MO18DD057	179	-61	330	MO18DD061	150	-59	332
MO18DD058	0	-60	330	MO18DD061	180	-57	332
MO18DD058	30	-61	330	MO18DD061	210	-56	333
MO18DD058	60	-62	329	MO18DD061	240	-56	333
MO18DD058	90	-61	330	MO18DD061	244	-56	333
MO18DD058	120	-61	330	MO18DD062	0	-60	330
MO18DD058	150	-60	331	MO18DD062	30	-59	331
MO18DD058	180	-59	332	MO18DD062	60	-59	330
MO18DD058	210	-58	331	MO18DD062	90	-59	329
MO18DD058	240	-57	332	MO18DD062	120	-59	328
MO18DD058	270	-57	332	MO18DD062	150	-59	329
MO18DD058	293	-57	332	MO18DD062	180	-59	329
MO18DD059	0	-60	330	MO18DD062	210	-59	329
MO18DD059	30	-61	328	MO18DD062	240	-59	329
MO18DD059	60	-61	330	MO18DD062	270	-59	329
MO18DD059	90	-61	328	MO18DD062	300	-59	330
MO18DD059	120	-60	328	MO18DD062	330	-60	330
MO18DD059	150	-59	328	MO18DD062	356	-61	329
MO18DD059	180	-58	328				



### Appendix 3

#### Assay Results for holes MO18DD056, 057, 058, 059, 060, 061 & 062; Li<sub>2</sub>O (%) & Sn (ppm)

Drill Hole ID	From (m)	To (m)	Lithology	DH Sample ID	Li <sub>2</sub> O (%)	Sn (ppm)
MO18DD056	0.00	4.70	Soil cover	NS_56		
MO18DD056	4.70	10.80	Laterite	NS_56		
MO18DD056	10.80	23.00	Mica schist	NS_56		
MO18DD056	23.00	24.00	Mica schist	48411	0.17	63
MO18DD056	24.00	24.75	Mica schist	48412	0.22	113
MO18DD056	24.75	25.16	Pegmatite	48413	0.16	186
MO18DD056	25.16	28.30	Pegmatite	NS_56_1		
MO18DD056	28.30	28.70	Pegmatite	48414	0.16	3020
MO18DD056	28.70	29.80	Pegmatite	NS_56_2		
MO18DD056	29.80	30.20	Pegmatite	48415	0.10	146
MO18DD056	30.20	30.60	Pegmatite	NS_56_3		
MO18DD056	30.60	30.80	Pegmatite	48416	0.15	174
MO18DD056	30.80	31.30	Mica schist	NS_56_4		
MO18DD056	31.30	32.00	Mica schist	48417	0.36	189
MO18DD056	32.00	36.00	Mica schist	NS_56_5		
MO18DD056	36.00	36.60	Mica schist	48418	0.65	376
MO18DD056	36.60	37.80	Pegmatite	48419	0.18	487
MO18DD056	37.80	38.03	Pegmatite	NS_56_6		
MO18DD056	38.03	38.35	Pegmatite	48421	0.10	269
MO18DD056	38.35	39.00	Mica schist	48422	0.11	137
MO18DD056	39.00	114.00	Mica schist	NS_56_7		
MO18DD056	114.00	115.12	Mica schist	48423	0.19	701
MO18DD056	115.12	116.00	Pegmatite	48424	0.02	6350
MO18DD056	116.00	117.00	Mica schist	48426	0.26	80
MO18DD056	117.00	133.00	Mica schist	NS_56_8		
MO18DD056	133.00	134.19	Mica schist	48427	0.32	357
MO18DD056	134.19	135.00	Pegmatite	48428	0.24	314
MO18DD056	135.00	136.00	Pegmatite	48429	0.09	70
MO18DD056	136.00	137.00	Pegmatite	48430	0.31	379
MO18DD056	137.00	137.60	Pegmatite	48431	0.16	8950
MO18DD056	137.60	138.60	Mica schist	48432	0.36	190
MO18DD056	138.60	151.00	Mica schist	NS_56_9		
MO18DD056	151.00	151.98	Mica schist	48433	0.27	133
MO18DD056	151.98	153.00	Pegmatite	48434	0.08	7850
MO18DD056	153.00	154.00	Pegmatite	48436	0.58	709
MO18DD056	154.00	155.00	Pegmatite	48437	1.29	710
MO18DD056	155.00	156.00	Pegmatite	48438	0.80	586
MO18DD056	156.00	157.00	Pegmatite	48439	0.24	359
MO18DD056	157.00	158.00	Pegmatite	48441	0.07	677
MO18DD056	158.00	159.00	Pegmatite	48442	0.11	618
MO18DD056	159.00	160.00	Pegmatite	48443	0.32	165
MO18DD056	160.00	161.00	Pegmatite	48444	0.21	671
MO18DD056	161.00	162.00	Pegmatite	48446	0.73	526
MO18DD056	162.00	163.00	Pegmatite	48447	0.97	817
MO18DD056	163.00	164.00	Pegmatite	48448	0.30	437

MO18DD056	164.00	165.00	Pegmatite	48449	0.51	552
MO18DD056	165.00	166.00	Pegmatite	48450	1.13	834
MO18DD056	166.00	167.00	Pegmatite	48451	1.87	1370
MO18DD056	167.00	168.00	Pegmatite	48452	2.44	720
MO18DD056	168.00	169.00	Pegmatite	48453	1.78	941
MO18DD056	169.00	170.00	Pegmatite	48454	1.84	906
MO18DD056	170.00	171.00	Pegmatite	48455	1.82	1160
MO18DD056	171.00	172.00	Pegmatite	48456	2.62	842
MO18DD056	172.00	173.00	Pegmatite	48457	1.35	1000
MO18DD056	173.00	174.00	Pegmatite	48458	0.52	386
MO18DD056	174.00	175.00	Pegmatite	48459	0.72	496
MO18DD056	175.00	176.00	Pegmatite	48461	2.45	262
MO18DD056	176.00	177.00	Pegmatite	48462	1.31	577
MO18DD056	177.00	178.00	Pegmatite	48463	2.56	723
MO18DD056	178.00	179.00	Pegmatite	48464	2.09	674
MO18DD056	179.00	180.00	Pegmatite	48466	1.21	238
MO18DD056	180.00	181.00	Pegmatite	48467	1.41	291
MO18DD056	181.00	182.00	Pegmatite	48468	1.80	375
MO18DD056	182.00	183.00	Pegmatite	48469	2.77	601
MO18DD056	183.00	184.00	Pegmatite	48470	2.00	724
MO18DD056	184.00	185.00	Pegmatite	48471	1.02	428
MO18DD056	185.00	186.00	Pegmatite	48472	0.50	141
MO18DD056	186.00	187.00	Pegmatite	48473	0.40	147
MO18DD056	187.00	188.00	Pegmatite	48474	1.74	150
MO18DD056	188.00	189.00	Pegmatite	48476	0.43	286
MO18DD056	189.00	190.00	Pegmatite	48477	0.77	290
MO18DD056	190.00	191.00	Pegmatite	48478	0.27	166
MO18DD056	191.00	192.00	Pegmatite	48479	0.22	344
MO18DD056	192.00	193.00	Pegmatite	48481	0.60	1140
MO18DD056	193.00	194.00	Pegmatite	48482	0.70	472
MO18DD056	194.00	195.00	Pegmatite	48483	1.73	127
MO18DD056	195.00	196.00	Pegmatite	48484	1.81	725
MO18DD056	196.00	197.00	Pegmatite	48486	1.01	368
MO18DD056	197.00	198.00	Pegmatite	48487	0.97	401
MO18DD056	198.00	199.00	Pegmatite	48488	0.92	238
MO18DD056	199.00	200.00	Pegmatite	48489	1.64	866
MO18DD056	200.00	201.00	Pegmatite	48490	2.37	320
MO18DD056	201.00	202.00	Pegmatite	48491	0.39	257
MO18DD056	202.00	203.00	Pegmatite	48492	0.19	254
MO18DD056	203.00	204.00	Pegmatite	48493	0.16	301
MO18DD056	204.00	205.00	Pegmatite	48494	0.30	162
MO18DD056	205.00	206.00	Pegmatite	48495	0.09	472
MO18DD056	206.00	207.00	Pegmatite	48496	1.79	1210
MO18DD056	207.00	208.00	Pegmatite	48497	1.27	1060
MO18DD056	208.00	209.00	Pegmatite	48498	0.18	2260
MO18DD056	209.00	210.00	Pegmatite	48499	0.11	1300
MO18DD056	210.00	211.00	Pegmatite	48501	0.22	249
MO18DD056	211.00	212.00	Pegmatite	48502	0.19	235
MO18DD056	212.00	213.00	Pegmatite	48503	0.23	170
MO18DD056	213.00	214.00	Pegmatite	48504	1.04	677
MO18DD056	214.00	215.00	Pegmatite	48506	0.30	164

MO18DD056	215.00	216.00	Pegmatite	48507	0.98	1470
MO18DD056	216.00	217.00	Pegmatite	48508	1.08	870
MO18DD056	217.00	218.00	Pegmatite	48509	0.46	1940
MO18DD056	218.00	219.00	Pegmatite	48510	2.08	859
MO18DD056	219.00	220.00	Pegmatite	48511	1.81	322
MO18DD056	220.00	221.00	Pegmatite	48512	1.62	948
MO18DD056	221.00	222.00	Pegmatite	48513	1.10	296
MO18DD056	222.00	223.00	Pegmatite	48514	1.59	1000
MO18DD056	223.00	224.00	Pegmatite	48516	2.18	729
MO18DD056	224.00	225.00	Pegmatite	48517	1.71	940
MO18DD056	225.00	226.00	Pegmatite	48518	1.86	1480
MO18DD056	226.00	227.00	Pegmatite	48519	0.74	921
MO18DD056	227.00	228.00	Pegmatite	48521	0.09	664
MO18DD056	228.00	229.00	Pegmatite	48522	0.43	1020
MO18DD056	229.00	230.00	Pegmatite	48523	1.79	1410
MO18DD056	230.00	231.00	Pegmatite	48524	1.66	654
MO18DD056	231.00	232.00	Pegmatite	48526	0.25	1520
MO18DD056	232.00	233.00	Pegmatite	48527	0.61	342
MO18DD056	233.00	234.00	Pegmatite	48528	3.39	719
MO18DD056	234.00	235.00	Pegmatite	48529	1.44	474
MO18DD056	235.00	236.00	Pegmatite	48530	1.87	181
MO18DD056	236.00	237.00	Pegmatite	48531	3.58	271
MO18DD056	237.00	238.00	Pegmatite	48532	0.11	252
MO18DD056	238.00	239.00	Pegmatite	48533	0.94	722
MO18DD056	239.00	240.00	Pegmatite	48534	0.29	959
MO18DD056	240.00	241.00	Pegmatite	48535	1.18	671
MO18DD056	241.00	242.00	Pegmatite	48536	1.30	646
MO18DD056	242.00	243.00	Pegmatite	48537	0.50	1340
MO18DD056	243.00	244.00	Pegmatite	48538	1.00	778
MO18DD056	244.00	245.00	Pegmatite	48539	1.45	274
MO18DD056	245.00	246.00	Pegmatite	48541	0.61	281
MO18DD056	246.00	247.00	Pegmatite	48542	0.77	894
MO18DD056	247.00	248.00	Pegmatite	48543	0.47	427
MO18DD056	248.00	249.00	Pegmatite	48544	0.37	1950
MO18DD056	249.00	250.00	Pegmatite	48546	0.08	1190
MO18DD056	250.00	251.00	Pegmatite	48547	0.05	638
MO18DD056	251.00	252.00	Pegmatite	48548	0.03	1320
MO18DD056	252.00	253.00	Pegmatite	48549	0.05	1050
MO18DD056	253.00	253.46	Pegmatite	48550	0.02	1370
MO18DD056	253.46	253.60	Pegmatite	NS_56_10		
MO18DD056	253.60	255.00	Pegmatite	48551	0.03	822
MO18DD056	255.00	256.00	Pegmatite	48552	0.03	664
MO18DD056	256.00	257.00	Pegmatite	48553	0.07	1100
MO18DD056	257.00	258.00	Pegmatite	48554	0.06	711
MO18DD056	258.00	259.00	Pegmatite	48556	0.07	407
MO18DD056	259.00	260.00	Pegmatite	48557	0.07	7100
MO18DD056	260.00	261.00	Pegmatite	48558	0.09	1160
MO18DD056	261.00	262.00	Pegmatite	48559	0.04	1190
MO18DD056	262.00	263.00	Pegmatite	48561	0.07	1610
MO18DD056	263.00	264.00	Pegmatite	48562	0.10	787
MO18DD056	264.00	265.00	Pegmatite	48563	1.86	780

MO18DD056	265.00	266.00	Pegmatite	48564	2.83	382
MO18DD056	266.00	267.00	Pegmatite	48566	2.21	208
MO18DD056	267.00	268.00	Pegmatite	48567	3.27	150
MO18DD056	268.00	269.00	Pegmatite	48568	1.76	142
MO18DD056	269.00	270.00	Pegmatite	48569	3.34	178
MO18DD056	270.00	271.00	Pegmatite	48570	3.44	162
MO18DD056	271.00	272.00	Pegmatite	48571	1.31	763
MO18DD056	272.00	273.00	Pegmatite	48572	3.06	268
MO18DD056	273.00	274.00	Pegmatite	48573	2.40	212
MO18DD056	274.00	275.00	Pegmatite	48574	2.72	254
MO18DD056	275.00	276.00	Pegmatite	48575	3.49	285
MO18DD056	276.00	277.00	Pegmatite	48576	2.80	384
MO18DD056	277.00	278.00	Pegmatite	48577	0.55	126
MO18DD056	278.00	279.00	Pegmatite	48578	3.25	306
MO18DD056	279.00	280.00	Pegmatite	48579	2.96	801
MO18DD056	280.00	281.00	Pegmatite	48581	1.85	239
MO18DD056	281.00	282.00	Pegmatite	48582	1.37	699
MO18DD056	282.00	283.00	Pegmatite	48583	0.59	141
MO18DD056	283.00	284.00	Pegmatite	48584	0.76	801
MO18DD056	284.00	285.00	Pegmatite	48586	1.50	888
MO18DD056	285.00	286.00	Pegmatite	48587	1.61	263
MO18DD056	286.00	287.00	Pegmatite	48588	1.92	120
MO18DD056	287.00	288.00	Pegmatite	48589	1.21	94
MO18DD056	288.00	289.00	Pegmatite	48590	1.22	65
MO18DD056	289.00	290.00	Pegmatite	48591	0.64	66
MO18DD056	290.00	291.00	Pegmatite	48592	1.40	1090
MO18DD056	291.00	292.00	Pegmatite	48593	1.44	1390
MO18DD056	292.00	293.00	Pegmatite	48594	1.78	1490
MO18DD056	293.00	294.00	Pegmatite	48596	2.65	699
MO18DD056	294.00	295.00	Pegmatite	48597	1.51	588
MO18DD056	295.00	296.00	Pegmatite	48598	2.40	487
MO18DD056	296.00	297.00	Pegmatite	48599	1.23	1380
MO18DD056	297.00	298.00	Pegmatite	48601	1.32	1060
MO18DD056	298.00	299.00	Pegmatite	48602	1.09	1460
MO18DD056	299.00	300.00	Pegmatite	48603	1.03	1000
MO18DD056	300.00	301.00	Pegmatite	48604	1.06	801
MO18DD056	301.00	302.00	Pegmatite	48606	1.15	499
MO18DD056	302.00	303.00	Pegmatite	48607	1.92	835
MO18DD056	303.00	304.00	Pegmatite	48608	1.18	434
MO18DD056	304.00	305.00	Pegmatite	48609	2.11	1080
MO18DD056	305.00	306.00	Pegmatite	48610	3.23	560
MO18DD056	306.00	307.00	Pegmatite	48611	2.16	592
MO18DD056	307.00	308.00	Pegmatite	48612	1.77	403
MO18DD056	308.00	309.00	Pegmatite	48613	3.04	672
MO18DD056	309.00	310.00	Pegmatite	48614	2.37	972
MO18DD056	310.00	311.00	Pegmatite	48615	2.43	1080
MO18DD056	311.00	312.00	Pegmatite	48616	0.93	1970
MO18DD056	312.00	313.00	Pegmatite	48617	1.65	1340
MO18DD056	313.00	314.00	Pegmatite	48618	0.96	382
MO18DD056	314.00	315.00	Pegmatite	48619	3.76	168
MO18DD056	315.00	316.00	Pegmatite	48621	2.59	189

MO18DD056	316.00	317.00	Pegmatite	48622	0.79	149
MO18DD056	317.00	318.00	Pegmatite	48623	1.14	175
MO18DD056	318.00	319.00	Pegmatite	48624	1.13	109
MO18DD056	319.00	320.00	Pegmatite	48626	0.97	999
MO18DD056	320.00	321.00	Pegmatite	48627	1.11	784
MO18DD056	321.00	322.00	Pegmatite	48628	1.30	990
MO18DD056	322.00	323.00	Pegmatite	48629	1.40	628
MO18DD056	323.00	324.00	Pegmatite	48630	1.41	1020
MO18DD056	324.00	325.00	Pegmatite	48631	1.34	144
MO18DD056	325.00	326.00	Pegmatite	48632	0.85	232
MO18DD056	326.00	327.00	Pegmatite	48633	1.73	337
MO18DD056	327.00	328.00	Pegmatite	48634	2.60	373
MO18DD056	328.00	329.00	Pegmatite	48636	0.80	977
MO18DD056	329.00	330.00	Pegmatite	48637	1.21	496
MO18DD056	330.00	331.00	Pegmatite	48638	1.34	440
MO18DD056	331.00	332.00	Pegmatite	48639	0.84	462
MO18DD056	332.00	333.00	Pegmatite	48641	1.66	653
MO18DD056	333.00	334.00	Pegmatite	48642	1.60	799
MO18DD056	334.00	335.00	Pegmatite	48643	1.00	596
MO18DD056	335.00	336.00	Pegmatite	48644	0.17	535
MO18DD056	336.00	337.00	Pegmatite	48646	0.50	638
MO18DD056	337.00	338.00	Pegmatite	48647	2.67	418
MO18DD056	338.00	339.00	Pegmatite	48648	1.68	801
MO18DD056	339.00	340.00	Pegmatite	48649	2.34	255
MO18DD056	340.00	341.00	Pegmatite	48650	3.70	371
MO18DD056	341.00	342.00	Pegmatite	48651	1.27	839
MO18DD056	342.00	343.00	Pegmatite	48652	0.61	657
MO18DD056	343.00	344.00	Pegmatite	48653	0.92	176
MO18DD056	344.00	345.00	Pegmatite	48654	1.64	165
MO18DD056	345.00	346.00	Pegmatite	48655	0.08	149
MO18DD056	346.00	347.00	Pegmatite	48656	0.05	1310
MO18DD056	347.00	348.00	Pegmatite	48657	0.81	1150
MO18DD056	348.00	349.00	Pegmatite	48658	2.03	507
MO18DD056	349.00	350.00	Pegmatite	48659	3.18	425
MO18DD056	350.00	351.00	Pegmatite	48661	1.03	81
MO18DD056	351.00	352.00	Pegmatite	48662	0.98	260
MO18DD056	352.00	353.00	Pegmatite	48663	2.74	148
MO18DD056	353.00	354.00	Pegmatite	48664	2.34	282
MO18DD056	354.00	355.00	Pegmatite	48666	1.16	616
MO18DD056	355.00	356.00	Pegmatite	48667	1.40	621
MO18DD056	356.00	357.00	Pegmatite	48668	1.71	305
MO18DD056	357.00	358.00	Pegmatite	48669	1.42	1010
MO18DD056	358.00	359.00	Pegmatite	48670	1.75	1200
MO18DD056	359.00	360.00	Pegmatite	48671	1.52	1080
MO18DD056	360.00	361.00	Pegmatite	48672	1.17	1200
MO18DD056	361.00	362.00	Pegmatite	48673	1.91	1080
MO18DD056	362.00	363.00	Pegmatite	48674	2.00	1290
MO18DD056	363.00	364.00	Pegmatite	48676	1.41	555
MO18DD056	364.00	365.00	Pegmatite	48677	0.49	1160
MO18DD056	365.00	366.00	Pegmatite	48678	1.76	329
MO18DD056	366.00	367.00	Pegmatite	48679	1.96	748

MO18DD056	367.00	368.00	Pegmatite	48681	0.61	1130
MO18DD056	368.00	369.00	Pegmatite	48682	0.51	374
MO18DD056	369.00	370.00	Pegmatite	48683	0.98	602
MO18DD056	370.00	371.00	Pegmatite	48684	1.04	905
MO18DD056	371.00	372.00	Pegmatite	48686	1.72	870
MO18DD056	372.00	373.00	Pegmatite	48687	1.26	1170
MO18DD056	373.00	374.00	Pegmatite	48688	1.66	1080
MO18DD056	374.00	375.00	Pegmatite	48689	2.02	1030
MO18DD056	375.00	376.00	Pegmatite	48690	1.21	1090
MO18DD056	376.00	377.00	Pegmatite	48691	1.87	1050
MO18DD056	377.00	378.00	Pegmatite	48692	1.91	917
MO18DD056	378.00	379.00	Pegmatite	48693	1.75	657
MO18DD056	379.00	380.00	Pegmatite	48694	1.85	1140
MO18DD056	380.00	381.00	Pegmatite	48695	2.66	789
MO18DD056	381.00	382.00	Pegmatite	48696	1.52	802
MO18DD056	382.00	383.00	Pegmatite	48697	0.91	679
MO18DD056	383.00	384.00	Pegmatite	48698	0.95	374
MO18DD056	384.00	385.00	Pegmatite	48699	0.04	8830
MO18DD056	385.00	385.45	Pegmatite	48701	0.08	1230
MO18DD056	385.45	386.00	Mica schist	48702	0.40	117
MO18DD056	386.00	387.00	Mica schist	48703	0.36	20
MO18DD057	0.00	1.22	Soil cover	26101	0.05	188
MO18DD057	1.22	1.50	Soil cover	NS_57		
MO18DD057	1.50	2.00	Pegmatite	26102	0.13	264
MO18DD057	2.00	2.50	Pegmatite	NS_57_1		
MO18DD057	2.50	2.90	Pegmatite	26103	0.12	361
MO18DD057	2.90	3.10	Pegmatite	NS_57_2		
MO18DD057	3.10	4.00	Pegmatite	26104	0.17	961
MO18DD057	4.00	5.00	Pegmatite	26105	0.16	930
MO18DD057	5.00	6.00	Pegmatite	26106	0.13	653
MO18DD057	6.00	7.00	Pegmatite	26107	0.21	999
MO18DD057	7.00	7.90	Pegmatite	26108	0.17	467
MO18DD057	7.90	8.40	Pegmatite	NS_57_3		
MO18DD057	8.40	8.95	Pegmatite	26109	0.35	28700
MO18DD057	8.95	9.90	Pegmatite	NS_57_4		
MO18DD057	9.90	11.00	Pegmatite	26111	0.23	1180
MO18DD057	11.00	11.40	Pegmatite	NS_57_5		
MO18DD057	11.40	12.00	Pegmatite	26112	0.55	831
MO18DD057	12.00	13.00	Pegmatite	26113	0.79	560
MO18DD057	13.00	14.00	Pegmatite	26114	0.42	787
MO18DD057	14.00	15.00	Pegmatite	26116	0.41	1730
MO18DD057	15.00	16.00	Pegmatite	26117	0.69	3830
MO18DD057	16.00	17.00	Pegmatite	26118	0.87	1780
MO18DD057	17.00	18.00	Pegmatite	26119	1.67	4400
MO18DD057	18.00	19.00	Pegmatite	26120	1.06	2240
MO18DD057	19.00	20.00	Pegmatite	26121	1.10	1340
MO18DD057	20.00	21.00	Pegmatite	26122	1.98	793
MO18DD057	21.00	21.40	Pegmatite	26123	0.33	1510
MO18DD057	21.40	21.90	Pegmatite	NS_57_6		
MO18DD057	21.90	23.10	Pegmatite	26124	1.04	847
MO18DD057	23.10	23.40	Pegmatite	NS_57_7		

MO18DD057	23.40	24.00	Pegmatite	26126	0.56	988
MO18DD057	24.00	25.00	Pegmatite	26127	1.03	1130
MO18DD057	25.00	26.00	Pegmatite	26128	1.83	997
MO18DD057	26.00	27.00	Pegmatite	26129	2.59	483
MO18DD057	27.00	28.00	Pegmatite	26131	1.43	1240
MO18DD057	28.00	29.00	Pegmatite	26132	2.50	414
MO18DD057	29.00	30.00	Pegmatite	26133	1.73	629
MO18DD057	30.00	31.00	Pegmatite	26134	1.71	1940
MO18DD057	31.00	32.00	Pegmatite	26136	1.61	1610
MO18DD057	32.00	33.00	Pegmatite	26137	1.38	1430
MO18DD057	33.00	34.00	Pegmatite	26138	1.83	1100
MO18DD057	34.00	35.00	Pegmatite	26139	1.59	1090
MO18DD057	35.00	36.00	Pegmatite	26140	2.03	511
MO18DD057	36.00	37.00	Pegmatite	26141	2.16	797
MO18DD057	37.00	38.00	Pegmatite	26142	1.50	523
MO18DD057	38.00	39.00	Pegmatite	26143	1.62	1010
MO18DD057	39.00	40.00	Pegmatite	26144	2.20	584
MO18DD057	40.00	41.00	Pegmatite	26145	1.16	1090
MO18DD057	41.00	42.00	Pegmatite	26146	1.12	2280
MO18DD057	42.00	43.00	Pegmatite	26147	2.06	841
MO18DD057	43.00	44.00	Pegmatite	26148	0.36	482
MO18DD057	44.00	45.00	Pegmatite	26149	0.07	1020
MO18DD057	45.00	46.00	Pegmatite	26151	0.21	812
MO18DD057	46.00	47.00	Pegmatite	26152	0.32	674
MO18DD057	47.00	48.00	Pegmatite	26153	0.06	1010
MO18DD057	48.00	49.00	Pegmatite	26154	0.22	1070
MO18DD057	49.00	50.00	Pegmatite	26156	1.18	400
MO18DD057	50.00	51.00	Pegmatite	26157	0.75	886
MO18DD057	51.00	52.00	Pegmatite	26158	0.95	2550
MO18DD057	52.00	53.00	Pegmatite	26159	1.89	965
MO18DD057	53.00	54.00	Pegmatite	26160	0.95	1150
MO18DD057	54.00	55.00	Pegmatite	26161	0.54	1070
MO18DD057	55.00	56.00	Pegmatite	26162	1.48	1090
MO18DD057	56.00	57.00	Pegmatite	26163	1.11	880
MO18DD057	57.00	58.00	Pegmatite	26164	0.86	861
MO18DD057	58.00	59.00	Pegmatite	26166	0.88	1050
MO18DD057	59.00	60.00	Pegmatite	26167	1.00	1550
MO18DD057	60.00	61.00	Pegmatite	26168	0.13	1660
MO18DD057	61.00	62.00	Pegmatite	26169	0.33	806
MO18DD057	62.00	63.00	Pegmatite	26171	0.74	401
MO18DD057	63.00	64.00	Pegmatite	26172	0.47	190
MO18DD057	64.00	65.00	Pegmatite	26173	1.11	356
MO18DD057	65.00	66.00	Pegmatite	26174	0.06	1110
MO18DD057	66.00	67.00	Pegmatite	26176	0.81	1680
MO18DD057	67.00	68.00	Pegmatite	26177	0.85	965
MO18DD057	68.00	69.00	Pegmatite	26178	0.93	1110
MO18DD057	69.00	70.00	Pegmatite	26179	1.00	1160
MO18DD057	70.00	71.00	Pegmatite	26180	1.20	1310
MO18DD057	71.00	72.00	Pegmatite	26181	0.64	1140
MO18DD057	72.00	73.00	Pegmatite	26182	0.96	1520
MO18DD057	73.00	74.00	Pegmatite	26183	0.70	1220

MO18DD057	74.00	75.00	Pegmatite	26184	0.22	1500
MO18DD057	75.00	76.00	Pegmatite	26185	0.89	1200
MO18DD057	76.00	77.00	Pegmatite	26186	1.15	1360
MO18DD057	77.00	78.00	Pegmatite	26187	1.21	1180
MO18DD057	78.00	79.00	Pegmatite	26188	1.12	1280
MO18DD057	79.00	80.00	Pegmatite	26189	2.11	1640
MO18DD057	80.00	81.00	Pegmatite	26191	1.46	1070
MO18DD057	81.00	82.00	Pegmatite	26192	2.00	901
MO18DD057	82.00	83.00	Pegmatite	26193	1.88	860
MO18DD057	83.00	84.00	Pegmatite	26194	1.69	1250
MO18DD057	84.00	85.00	Pegmatite	26196	0.86	1740
MO18DD057	85.00	86.00	Pegmatite	26197	1.73	928
MO18DD057	86.00	87.00	Pegmatite	26198	0.08	1260
MO18DD057	87.00	88.00	Pegmatite	26199	0.03	2880
MO18DD057	88.00	89.00	Pegmatite	26200	0.59	1300
MO18DD057	89.00	90.00	Pegmatite	26201	0.34	1340
MO18DD057	90.00	91.00	Pegmatite	26202	0.02	1510
MO18DD057	91.00	92.00	Pegmatite	26203	0.16	1320
MO18DD057	92.00	93.00	Pegmatite	26204	0.46	1330
MO18DD057	93.00	94.00	Pegmatite	26206	0.04	1750
MO18DD057	94.00	95.00	Pegmatite	26207	0.05	1310
MO18DD057	95.00	96.00	Pegmatite	26208	0.06	1500
MO18DD057	96.00	97.00	Pegmatite	26209	0.04	1860
MO18DD057	97.00	98.00	Pegmatite	26211	0.03	1130
MO18DD057	98.00	99.00	Pegmatite	26212	0.01	1930
MO18DD057	99.00	100.00	Pegmatite	26213	0.01	2400
MO18DD057	100.00	101.00	Pegmatite	26214	0.00	1790
MO18DD057	101.00	102.00	Pegmatite	26216	0.00	1620
MO18DD057	102.00	103.00	Pegmatite	26217	0.01	1320
MO18DD057	103.00	104.00	Pegmatite	26218	0.01	538
MO18DD057	104.00	105.00	Pegmatite	26219	0.01	1580
MO18DD057	105.00	106.00	Pegmatite	26220	0.01	1140
MO18DD057	106.00	107.00	Pegmatite	26221	0.00	1150
MO18DD057	107.00	108.00	Pegmatite	26222	0.01	2890
MO18DD057	108.00	109.00	Pegmatite	26223	0.01	1170
MO18DD057	109.00	110.00	Pegmatite	26224	0.00	1610
MO18DD057	110.00	111.00	Pegmatite	26225	0.05	667
MO18DD057	111.00	112.00	Pegmatite	26226	0.01	1460
MO18DD057	112.00	113.00	Pegmatite	26227	0.04	862
MO18DD057	113.00	114.00	Pegmatite	26228	0.02	1790
MO18DD057	114.00	115.00	Pegmatite	26229	0.01	1600
MO18DD057	115.00	116.00	Pegmatite	26231	0.01	1740
MO18DD057	116.00	117.00	Pegmatite	26232	0.02	1530
MO18DD057	117.00	118.00	Pegmatite	26233	0.01	1020
MO18DD057	118.00	119.00	Pegmatite	26234	0.01	1160
MO18DD057	119.00	120.00	Pegmatite	26236	0.00	715
MO18DD057	120.00	121.00	Pegmatite	26237	0.00	742
MO18DD057	121.00	122.00	Pegmatite	26238	0.00	728
MO18DD057	122.00	123.00	Pegmatite	26239	0.01	567
MO18DD057	123.00	124.00	Pegmatite	26240	0.01	489
MO18DD057	124.00	125.00	Pegmatite	26241	0.02	1290



MO18DD057	125.00	126.00	Pegmatite	26242	0.03	1080
MO18DD057	126.00	127.00	Pegmatite	26243	0.04	1050
MO18DD057	127.00	128.00	Pegmatite	26244	0.03	1610
MO18DD057	128.00	129.00	Pegmatite	26246	0.03	999
MO18DD057	129.00	130.00	Pegmatite	26247	0.07	1840
MO18DD057	130.00	131.00	Pegmatite	26248	0.05	1220
MO18DD057	131.00	132.00	Pegmatite	26249	0.08	1070
MO18DD057	132.00	133.00	Pegmatite	26251	0.13	1430
MO18DD057	133.00	134.00	Pegmatite	26252	0.11	917
MO18DD057	134.00	135.00	Pegmatite	26253	0.09	822
MO18DD057	135.00	136.00	Pegmatite	26254	0.04	397
MO18DD057	136.00	137.36	Pegmatite	26256	0.02	660
MO18DD057	137.36	138.00	Mica schist	26257	0.11	189
MO18DD057	138.00	153.00	Mica schist	NS_57_8		
MO18DD057	153.00	153.64	Mica schist	26258	0.07	102
MO18DD057	153.64	155.00	Pegmatite	26259	0.02	221
MO18DD057	155.00	156.00	Pegmatite	26260	0.02	108000
MO18DD057	156.00	157.00	Pegmatite	26261	0.02	663
MO18DD057	157.00	158.00	Pegmatite	26262	0.02	8930
MO18DD057	158.00	159.00	Pegmatite	26263	0.03	56900
MO18DD057	159.00	159.85	Pegmatite	26264	0.04	17250
MO18DD057	159.85	161.00	Mica schist	26265	0.10	324
MO18DD057	161.00	162.00	Mica schist	26266	0.11	54
MO18DD058	0.00	12.00	Soil cover	NS_58		
MO18DD058	12.00	12.85	Soil cover	37511	0.11	245
MO18DD058	12.85	13.00	Soil cover	NS_58_1		
MO18DD058	13.00	13.75	Soil cover	37512	0.43	554
MO18DD058	13.75	13.90	Soil cover	NS_58_2		
MO18DD058	13.90	14.40	Pegmatite	37513	0.14	637
MO18DD058	14.40	14.50	Pegmatite	NS_58_3		
MO18DD058	14.50	14.85	Pegmatite	37514	0.30	698
MO18DD058	14.85	15.00	Pegmatite	NS_58_4		
MO18DD058	15.00	15.35	Pegmatite	37515	0.41	828
MO18DD058	15.35	15.50	Pegmatite	NS_58_5		
MO18DD058	15.50	15.80	Pegmatite	37516	0.32	1020
MO18DD058	15.80	15.90	Pegmatite	NS_58_6		
MO18DD058	15.90	16.35	Pegmatite	37517	0.24	472
MO18DD058	16.35	16.50	Pegmatite	NS_58_7		
MO18DD058	16.50	16.85	Pegmatite	37518	0.15	701
MO18DD058	16.85	17.09	Pegmatite	NS_58_8		
MO18DD058	17.09	17.59	Pegmatite	37519	0.14	2150
MO18DD058	17.59	17.74	Pegmatite	NS_58_9		
MO18DD058	17.74	17.94	Pegmatite	37521	0.11	385
MO18DD058	17.94	19.10	Pegmatite	NS_58_10		
MO18DD058	19.10	20.00	Pegmatite	37522	0.19	452
MO18DD058	20.00	20.45	Pegmatite	37523	0.11	476
MO18DD058	20.45	21.38	Mica schist	37524	0.62	265
MO18DD058	21.38	21.50	Mica schist	NS_58_11		
MO18DD058	21.50	21.90	Mica schist	37526	0.95	585
MO18DD058	21.90	23.00	Pegmatite	37527	0.17	821
MO18DD058	23.00	23.56	Pegmatite	37528	0.10	757

MO18DD058	23.56	23.75	Mica schist	37529	0.25	100
MO18DD058	23.75	26.00	Mica schist	NS_58_12		
MO18DD058	26.00	27.27	Mica schist	37530	0.36	119
MO18DD058	27.27	27.34	Pegmatite	NS_58_13		
MO18DD058	27.34	27.50	Pegmatite	NS_58_14		
MO18DD058	27.50	28.00	Pegmatite	37531	0.12	1020
MO18DD058	28.00	29.00	Pegmatite	37532	0.14	1770
MO18DD058	29.00	29.30	Pegmatite	37533	0.15	661
MO18DD058	29.30	30.50	Pegmatite	NS_58_15		
MO18DD058	30.50	30.85	Pegmatite	37534	0.17	877
MO18DD058	30.85	31.00	Pegmatite	NS_58_16		
MO18DD058	31.00	32.00	Pegmatite	37536	0.19	140
MO18DD058	32.00	32.84	Pegmatite	37537	0.11	1550
MO18DD058	32.84	34.00	Mica schist	37538	0.21	80
MO18DD058	34.00	52.00	Mica schist	NS_58_17		
MO18DD058	52.00	52.60	Mica schist	37539	0.63	155
MO18DD058	52.60	53.74	Pegmatite	37541	0.25	139
MO18DD058	53.74	55.00	Mica schist	37542	0.64	123
MO18DD058	55.00	57.00	Mica schist	NS_58_18		
MO18DD058	57.00	58.29	Mica schist	37543	0.56	163
MO18DD058	58.29	59.00	Pegmatite	37544	2.08	663
MO18DD058	59.00	60.00	Pegmatite	37546	2.12	777
MO18DD058	60.00	61.00	Pegmatite	37547	2.42	723
MO18DD058	61.00	62.00	Pegmatite	37548	0.98	534
MO18DD058	62.00	63.00	Pegmatite	37549	1.87	432
MO18DD058	63.00	64.00	Pegmatite	37550	0.93	267
MO18DD058	64.00	65.00	Pegmatite	37551	2.79	585
MO18DD058	65.00	66.00	Pegmatite	37552	1.27	1130
MO18DD058	66.00	67.00	Pegmatite	37553	1.40	1200
MO18DD058	67.00	68.00	Pegmatite	37554	1.84	406
MO18DD058	68.00	69.00	Pegmatite	37555	2.90	204
MO18DD058	69.00	70.00	Pegmatite	37556	3.50	1180
MO18DD058	70.00	71.00	Pegmatite	37557	1.15	778
MO18DD058	71.00	72.00	Pegmatite	37558	2.29	948
MO18DD058	72.00	73.00	Pegmatite	37559	2.56	718
MO18DD058	73.00	74.00	Pegmatite	37561	1.77	913
MO18DD058	74.00	75.00	Pegmatite	37562	1.99	457
MO18DD058	75.00	76.00	Pegmatite	37563	1.54	553
MO18DD058	76.00	77.00	Pegmatite	37564	1.60	835
MO18DD058	77.00	78.00	Pegmatite	37566	2.49	271
MO18DD058	78.00	79.00	Pegmatite	37567	1.38	1530
MO18DD058	79.00	80.00	Pegmatite	37568	1.21	721
MO18DD058	80.00	81.00	Pegmatite	37569	0.28	444
MO18DD058	81.00	82.00	Pegmatite	37570	1.33	678
MO18DD058	82.00	83.00	Pegmatite	37571	1.31	1660
MO18DD058	83.00	84.00	Pegmatite	37572	2.30	696
MO18DD058	84.00	85.00	Pegmatite	37573	2.91	707
MO18DD058	85.00	86.00	Pegmatite	37574	2.28	1230
MO18DD058	86.00	87.00	Pegmatite	37576	1.30	1300
MO18DD058	87.00	88.00	Pegmatite	37577	1.35	481
MO18DD058	88.00	89.00	Pegmatite	37578	1.14	508

MO18DD058	89.00	89.92	Pegmatite	37579	1.49	1190
MO18DD058	89.92	91.00	Mica schist	37581	0.27	28
MO18DD058	91.00	101.00	Mica schist	NS_58_19		
MO18DD058	101.00	101.92	Mica schist	37582	0.16	130
MO18DD058	101.92	103.00	Pegmatite	37583	0.40	619
MO18DD058	103.00	104.00	Pegmatite	37584	1.77	137
MO18DD058	104.00	105.00	Pegmatite	37586	1.88	225
MO18DD058	105.00	106.00	Pegmatite	37587	2.23	567
MO18DD058	106.00	107.00	Pegmatite	37588	1.82	1510
MO18DD058	107.00	108.00	Pegmatite	37589	1.49	1110
MO18DD058	108.00	109.00	Pegmatite	37590	2.00	587
MO18DD058	109.00	110.00	Pegmatite	37591	1.89	659
MO18DD058	110.00	111.00	Pegmatite	37592	1.15	1220
MO18DD058	111.00	112.00	Pegmatite	37593	2.71	1680
MO18DD058	112.00	113.00	Pegmatite	37594	1.91	292
MO18DD058	113.00	114.00	Pegmatite	37595	2.76	274
MO18DD058	114.00	115.00	Pegmatite	37596	1.40	847
MO18DD058	115.00	116.00	Pegmatite	37597	1.11	358
MO18DD058	116.00	117.00	Pegmatite	37598	0.34	463
MO18DD058	117.00	118.00	Pegmatite	37599	1.45	401
MO18DD058	118.00	119.00	Pegmatite	37601	0.14	218
MO18DD058	119.00	120.00	Pegmatite	37602	0.58	307
MO18DD058	120.00	121.00	Pegmatite	37603	1.17	1750
MO18DD058	121.00	122.00	Pegmatite	37604	0.18	1320
MO18DD058	122.00	123.00	Pegmatite	37606	0.21	731
MO18DD058	123.00	124.00	Pegmatite	37607	0.12	573
MO18DD058	124.00	125.00	Pegmatite	37608	0.41	807
MO18DD058	125.00	126.00	Pegmatite	37609	1.50	867
MO18DD058	126.00	127.00	Pegmatite	37610	2.18	1020
MO18DD058	127.00	128.00	Pegmatite	37611	1.87	1030
MO18DD058	128.00	129.00	Pegmatite	37612	2.14	605
MO18DD058	129.00	130.00	Pegmatite	37613	1.23	702
MO18DD058	130.00	131.00	Pegmatite	37614	2.55	379
MO18DD058	131.00	132.00	Pegmatite	37616	1.77	1150
MO18DD058	132.00	133.00	Pegmatite	37617	2.69	671
MO18DD058	133.00	134.00	Pegmatite	37618	1.44	251
MO18DD058	134.00	135.00	Pegmatite	37619	1.42	606
MO18DD058	135.00	136.00	Pegmatite	37621	0.35	1480
MO18DD058	136.00	137.00	Pegmatite	37622	0.18	841
MO18DD058	137.00	138.00	Pegmatite	37623	0.51	1240
MO18DD058	138.00	139.00	Pegmatite	37624	1.10	3470
MO18DD058	139.00	140.00	Pegmatite	37626	1.58	1420
MO18DD058	140.00	141.00	Pegmatite	37627	2.32	894
MO18DD058	141.00	142.00	Pegmatite	37628	1.25	2300
MO18DD058	142.00	143.00	Pegmatite	37629	2.26	381
MO18DD058	143.00	144.00	Pegmatite	37630	1.19	1000
MO18DD058	144.00	145.00	Pegmatite	37631	1.87	789
MO18DD058	145.00	146.00	Pegmatite	37632	2.76	349
MO18DD058	146.00	147.00	Pegmatite	37633	2.80	474
MO18DD058	147.00	148.00	Pegmatite	37634	1.68	632
MO18DD058	148.00	149.00	Pegmatite	37635	1.32	1790

MO18DD058	149.00	150.00	Pegmatite	37636	0.89	318
MO18DD058	150.00	151.00	Pegmatite	37637	2.84	331
MO18DD058	151.00	152.00	Pegmatite	37638	1.17	158
MO18DD058	152.00	153.00	Pegmatite	37639	1.80	208
MO18DD058	153.00	154.00	Pegmatite	37641	1.43	151
MO18DD058	154.00	155.00	Pegmatite	37642	1.79	386
MO18DD058	155.00	156.00	Pegmatite	37643	0.58	329
MO18DD058	156.00	157.00	Pegmatite	37644	1.82	923
MO18DD058	157.00	158.00	Pegmatite	37646	0.71	836
MO18DD058	158.00	159.00	Pegmatite	37647	0.48	736
MO18DD058	159.00	160.00	Pegmatite	37648	2.67	253
MO18DD058	160.00	161.00	Pegmatite	37649	0.81	1200
MO18DD058	161.00	162.00	Pegmatite	37650	0.82	1180
MO18DD058	162.00	163.00	Pegmatite	37651	0.92	1060
MO18DD058	163.00	164.00	Pegmatite	37652	2.30	323
MO18DD058	164.00	165.00	Pegmatite	37653	2.27	562
MO18DD058	165.00	166.00	Pegmatite	37654	2.32	956
MO18DD058	166.00	167.00	Pegmatite	37656	1.47	846
MO18DD058	167.00	168.00	Pegmatite	37657	1.20	573
MO18DD058	168.00	169.00	Pegmatite	37658	1.74	366
MO18DD058	169.00	170.00	Pegmatite	37659	3.27	393
MO18DD058	170.00	171.00	Pegmatite	37661	1.75	1320
MO18DD058	171.00	172.00	Pegmatite	37662	1.33	371
MO18DD058	172.00	173.00	Pegmatite	37663	2.94	339
MO18DD058	173.00	174.00	Pegmatite	37664	2.48	227
MO18DD058	174.00	175.00	Pegmatite	37666	2.35	648
MO18DD058	175.00	176.00	Pegmatite	37667	0.86	2250
MO18DD058	176.00	177.00	Pegmatite	37668	2.90	705
MO18DD058	177.00	178.00	Pegmatite	37669	1.74	1400
MO18DD058	178.00	179.00	Pegmatite	37670	1.15	1390
MO18DD058	179.00	180.00	Pegmatite	37671	2.55	843
MO18DD058	180.00	181.00	Pegmatite	37672	0.89	1380
MO18DD058	181.00	182.00	Pegmatite	37673	2.06	1390
MO18DD058	182.00	183.00	Pegmatite	37674	1.97	2250
MO18DD058	183.00	184.00	Pegmatite	37675	2.40	659
MO18DD058	184.00	185.00	Pegmatite	37676	4.76	419
MO18DD058	185.00	186.00	Pegmatite	37677	0.43	888
MO18DD058	186.00	187.00	Pegmatite	37678	0.18	701
MO18DD058	187.00	188.00	Pegmatite	37679	0.70	219
MO18DD058	188.00	189.00	Pegmatite	37681	1.19	1820
MO18DD058	189.00	190.00	Pegmatite	37682	2.73	819
MO18DD058	190.00	191.00	Pegmatite	37683	3.24	2330
MO18DD058	191.00	192.00	Pegmatite	37684	1.18	265
MO18DD058	192.00	193.00	Pegmatite	37686	2.26	970
MO18DD058	193.00	194.00	Pegmatite	37687	2.54	1060
MO18DD058	194.00	195.00	Pegmatite	37688	1.75	1280
MO18DD058	195.00	196.00	Pegmatite	37689	1.99	1330
MO18DD058	196.00	197.00	Pegmatite	37690	2.22	1040
MO18DD058	197.00	198.00	Pegmatite	37691	2.24	1870
MO18DD058	198.00	199.00	Pegmatite	37692	1.11	1730
MO18DD058	199.00	200.00	Pegmatite	37693	1.52	1220

MO18DD058	200.00	201.00	Pegmatite	37694	2.31	596
MO18DD058	201.00	202.00	Pegmatite	37696	2.77	604
MO18DD058	202.00	203.00	Pegmatite	37697	1.50	3730
MO18DD058	203.00	204.00	Pegmatite	37698	0.98	1040
MO18DD058	204.00	205.00	Pegmatite	37699	2.09	1230
MO18DD058	205.00	206.00	Pegmatite	37701	1.52	2070
MO18DD058	206.00	207.00	Pegmatite	37702	1.48	1460
MO18DD058	207.00	208.00	Pegmatite	37703	1.23	833
MO18DD058	208.00	209.00	Pegmatite	37704	2.55	1140
MO18DD058	209.00	210.00	Pegmatite	37706	0.97	1250
MO18DD058	210.00	211.00	Pegmatite	37707	1.36	837
MO18DD058	211.00	212.00	Pegmatite	37708	0.92	944
MO18DD058	212.00	213.00	Pegmatite	37709	2.28	941
MO18DD058	213.00	214.00	Pegmatite	37710	1.75	1100
MO18DD058	214.00	215.00	Pegmatite	37711	2.11	919
MO18DD058	215.00	216.00	Pegmatite	37712	1.30	1300
MO18DD058	216.00	217.00	Pegmatite	37713	1.58	978
MO18DD058	217.00	218.00	Pegmatite	37714	2.06	1560
MO18DD058	218.00	219.00	Pegmatite	37715	1.55	1200
MO18DD058	219.00	220.00	Pegmatite	37716	2.71	994
MO18DD058	220.00	221.00	Pegmatite	37717	1.84	1030
MO18DD058	221.00	222.00	Pegmatite	37718	2.91	1260
MO18DD058	222.00	223.00	Pegmatite	37719	2.58	985
MO18DD058	223.00	224.00	Pegmatite	37721	2.06	1350
MO18DD058	224.00	225.00	Pegmatite	37722	1.84	1240
MO18DD058	225.00	226.00	Pegmatite	37723	1.57	956
MO18DD058	226.00	227.00	Pegmatite	37724	1.08	2220
MO18DD058	227.00	228.00	Pegmatite	37726	1.75	851
MO18DD058	228.00	229.00	Pegmatite	37727	2.31	850
MO18DD058	229.00	230.00	Pegmatite	37728	1.21	1040
MO18DD058	230.00	231.00	Pegmatite	37729	1.65	1100
MO18DD058	231.00	232.00	Pegmatite	37730	0.95	537
MO18DD058	232.00	233.00	Pegmatite	37731	1.69	246
MO18DD058	233.00	234.00	Pegmatite	37732	2.25	156
MO18DD058	234.00	235.00	Pegmatite	37733	1.62	903
MO18DD058	235.00	236.00	Pegmatite	37734	3.38	198
MO18DD058	236.00	237.00	Pegmatite	37736	2.70	113
MO18DD058	237.00	238.00	Pegmatite	37737	1.67	136
MO18DD058	238.00	239.00	Pegmatite	37738	2.26	128
MO18DD058	239.00	240.00	Pegmatite	37739	1.82	555
MO18DD058	240.00	241.00	Pegmatite	37741	1.88	155
MO18DD058	241.00	242.00	Pegmatite	37742	1.83	178
MO18DD058	242.00	243.00	Pegmatite	37743	1.72	128
MO18DD058	243.00	244.00	Pegmatite	37744	1.40	268
MO18DD058	244.00	245.00	Pegmatite	37746	2.17	205
MO18DD058	245.00	246.00	Pegmatite	37747	2.10	297
MO18DD058	246.00	247.00	Pegmatite	37748	1.72	364
MO18DD058	247.00	248.00	Pegmatite	37749	1.66	188
MO18DD058	248.00	249.00	Pegmatite	37750	2.01	1370
MO18DD058	249.00	250.00	Pegmatite	37751	1.87	956
MO18DD058	250.00	251.00	Pegmatite	37752	0.83	1220

MO18DD058	251.00	252.00	Pegmatite	37753	1.28	1220
MO18DD058	252.00	253.00	Pegmatite	37754	1.90	864
MO18DD058	253.00	254.00	Pegmatite	37755	1.89	873
MO18DD058	254.00	255.00	Pegmatite	37756	1.40	1280
MO18DD058	255.00	256.00	Pegmatite	37757	1.75	385
MO18DD058	256.00	257.00	Pegmatite	37758	2.14	890
MO18DD058	257.00	258.00	Pegmatite	37759	1.82	859
MO18DD058	258.00	258.66	Pegmatite	37761	1.63	790
MO18DD058	258.66	258.86	Pegmatite	37762	0.99	641
MO18DD058	258.86	260.00	Pegmatite	37763	1.68	392
MO18DD058	260.00	261.00	Pegmatite	37764	1.50	1050
MO18DD058	261.00	262.00	Pegmatite	37766	1.74	584
MO18DD058	262.00	263.00	Pegmatite	37767	1.60	606
MO18DD058	263.00	264.00	Pegmatite	37768	1.37	630
MO18DD058	264.00	265.00	Pegmatite	37769	2.64	261
MO18DD058	265.00	266.00	Pegmatite	37770	2.10	1360
MO18DD058	266.00	267.00	Pegmatite	37771	1.47	217
MO18DD058	267.00	268.00	Pegmatite	37772	1.80	169
MO18DD058	268.00	269.00	Pegmatite	37773	3.32	352
MO18DD058	269.00	270.00	Pegmatite	37774	1.77	124
MO18DD058	270.00	271.00	Pegmatite	37776	0.81	340
MO18DD058	271.00	272.00	Pegmatite	37777	0.53	1040
MO18DD058	272.00	273.00	Pegmatite	37778	1.58	630
MO18DD058	273.00	273.47	Pegmatite	37779	0.07	408
MO18DD058	273.47	274.00	Mica schist	37781	0.38	241
MO18DD058	274.00	275.00	Mica schist	37782	0.35	209
MO18DD059	0.00	8.67	Soil cover	NS_59		
MO18DD059	8.67	13.20	Laterite	NS_59		
MO18DD059	13.20	61.20	Mica schist	NS_59		
MO18DD059	61.20	88.45	Mica schist	NS_59		
MO18DD059	88.45	89.45	Mica schist	48711	0.04	33
MO18DD059	89.45	89.83	Mica schist	NS_59_1		
MO18DD059	89.83	90.82	Mica schist	48712	0.05	78
MO18DD059	90.82	92.08	Pegmatite	48713	0.03	94
MO18DD059	92.08	93.00	Mica schist	48714	0.08	85
MO18DD059	93.00	164.83	Mica schist	NS_59_2		
MO18DD059	164.83	165.20	Mica schist	48715	0.33	180
MO18DD059	165.20	166.00	Pegmatite	48716	0.19	467
MO18DD059	166.00	167.00	Pegmatite	48717	0.41	779
MO18DD059	167.00	168.00	Pegmatite	48718	0.72	1820
MO18DD059	168.00	169.00	Pegmatite	48719	1.41	1710
MO18DD059	169.00	170.00	Pegmatite	48721	1.27	1120
MO18DD059	170.00	171.00	Pegmatite	48722	1.12	1610
MO18DD059	171.00	172.00	Pegmatite	48723	1.52	2880
MO18DD059	172.00	173.00	Pegmatite	48724	1.53	1880
MO18DD059	173.00	174.00	Pegmatite	48726	0.29	862
MO18DD059	174.00	175.00	Pegmatite	48727	0.35	940
MO18DD059	175.00	176.00	Pegmatite	48728	0.16	6110
MO18DD059	176.00	177.00	Pegmatite	48729	0.31	537
MO18DD059	177.00	178.00	Pegmatite	48730	1.58	265
MO18DD059	178.00	179.00	Pegmatite	48731	3.63	242

MO18DD059	179.00	180.00	Pegmatite	48732	3.84	324
MO18DD059	180.00	181.00	Pegmatite	48733	1.89	213
MO18DD059	181.00	182.00	Pegmatite	48734	1.79	218
MO18DD059	182.00	183.00	Pegmatite	48736	0.87	183
MO18DD059	183.00	184.00	Pegmatite	48737	0.40	202
MO18DD059	184.00	185.00	Pegmatite	48738	0.58	206
MO18DD059	185.00	186.00	Pegmatite	48739	1.14	329
MO18DD059	186.00	187.00	Pegmatite	48741	1.62	688
MO18DD059	187.00	188.00	Pegmatite	48742	1.85	643
MO18DD059	188.00	189.00	Pegmatite	48743	2.86	736
MO18DD059	189.00	190.00	Pegmatite	48744	2.24	371
MO18DD059	190.00	191.00	Pegmatite	48746	0.75	3770
MO18DD059	191.00	192.00	Pegmatite	48747	0.07	44
MO18DD059	192.00	193.00	Pegmatite	48748	0.12	82
MO18DD059	193.00	194.00	Pegmatite	48749	0.41	1730
MO18DD059	194.00	195.00	Pegmatite	48750	0.09	57
MO18DD059	195.00	196.00	Pegmatite	48751	0.30	833
MO18DD059	196.00	197.00	Pegmatite	48752	0.92	192
MO18DD059	197.00	198.00	Pegmatite	48753	0.19	79
MO18DD059	198.00	199.00	Pegmatite	48754	0.70	2590
MO18DD059	199.00	200.00	Pegmatite	48755	0.62	7270
MO18DD059	200.00	201.00	Pegmatite	48756	0.67	7490
MO18DD059	201.00	202.00	Pegmatite	48757	0.93	5540
MO18DD059	202.00	203.00	Pegmatite	48758	1.57	659
MO18DD059	203.00	204.00	Pegmatite	48759	0.09	1380
MO18DD059	204.00	205.00	Pegmatite	48761	0.08	883
MO18DD059	205.00	206.00	Pegmatite	48762	0.08	539
MO18DD059	206.00	207.00	Pegmatite	48763	0.18	2520
MO18DD059	207.00	208.00	Pegmatite	48764	0.60	1660
MO18DD059	208.00	209.00	Pegmatite	48766	0.18	2690
MO18DD059	209.00	210.00	Pegmatite	48767	2.68	6280
MO18DD059	210.00	211.00	Pegmatite	48768	2.09	3070
MO18DD059	211.00	212.00	Pegmatite	48769	1.32	1190
MO18DD059	212.00	213.00	Pegmatite	48770	1.47	1010
MO18DD059	213.00	214.00	Pegmatite	48771	1.48	1180
MO18DD059	214.00	215.00	Pegmatite	48772	0.86	527
MO18DD059	215.00	216.00	Pegmatite	48773	1.42	1490
MO18DD059	216.00	217.00	Pegmatite	48774	0.41	484
MO18DD059	217.00	218.00	Pegmatite	48776	1.41	607
MO18DD059	218.00	219.00	Pegmatite	48777	0.94	1770
MO18DD059	219.00	220.00	Pegmatite	48778	1.96	234
MO18DD059	220.00	221.00	Pegmatite	48779	1.02	1390
MO18DD059	221.00	222.00	Pegmatite	48781	0.95	187
MO18DD059	222.00	223.00	Pegmatite	48782	1.13	365
MO18DD059	223.00	224.00	Pegmatite	48783	2.03	338
MO18DD059	224.00	225.00	Pegmatite	48784	2.01	415
MO18DD059	225.00	226.00	Pegmatite	48786	1.60	833
MO18DD059	226.00	227.00	Pegmatite	48787	1.78	782
MO18DD059	227.00	228.00	Pegmatite	48788	1.91	323
MO18DD059	228.00	229.00	Pegmatite	48789	1.13	648
MO18DD059	229.00	230.00	Pegmatite	48790	2.74	216

MO18DD059	230.00	231.00	Pegmatite	48791	3.61	227
MO18DD059	231.00	232.00	Pegmatite	48792	1.42	115
MO18DD059	232.00	233.00	Pegmatite	48793	1.86	625
MO18DD059	233.00	234.00	Pegmatite	48794	1.28	334
MO18DD059	234.00	235.00	Pegmatite	48795	1.01	1230
MO18DD059	235.00	236.00	Pegmatite	48796	1.94	1360
MO18DD059	236.00	237.00	Pegmatite	48797	2.50	509
MO18DD059	237.00	238.00	Pegmatite	48798	1.42	693
MO18DD059	238.00	239.00	Pegmatite	48799	2.31	445
MO18DD059	239.00	240.00	Pegmatite	48801	3.02	323
MO18DD059	240.00	241.00	Pegmatite	48802	2.00	324
MO18DD059	241.00	242.00	Pegmatite	48803	1.11	128
MO18DD059	242.00	243.00	Pegmatite	48804	1.84	867
MO18DD059	243.00	244.00	Pegmatite	48806	1.58	1160
MO18DD059	244.00	245.00	Pegmatite	48807	2.86	515
MO18DD059	245.00	246.00	Pegmatite	48808	0.95	1030
MO18DD059	246.00	247.00	Pegmatite	48809	1.41	514
MO18DD059	247.00	248.00	Pegmatite	48810	2.00	900
MO18DD059	248.00	249.00	Pegmatite	48811	2.38	548
MO18DD059	249.00	250.00	Pegmatite	48812	1.84	593
MO18DD059	250.00	251.00	Pegmatite	48813	1.40	886
MO18DD059	251.00	252.00	Pegmatite	48814	1.09	688
MO18DD059	252.00	253.00	Pegmatite	48816	2.01	643
MO18DD059	253.00	254.00	Pegmatite	48817	1.88	424
MO18DD059	254.00	255.00	Pegmatite	48818	1.50	528
MO18DD059	255.00	256.00	Pegmatite	48819	1.71	1010
MO18DD059	256.00	257.00	Pegmatite	48821	1.50	668
MO18DD059	257.00	258.00	Pegmatite	48822	1.79	6600
MO18DD059	258.00	259.00	Pegmatite	48823	0.40	374
MO18DD059	259.00	260.00	Pegmatite	48824	1.75	642
MO18DD059	260.00	261.00	Pegmatite	48826	0.96	1410
MO18DD059	261.00	262.00	Pegmatite	48827	1.50	427
MO18DD059	262.00	263.00	Pegmatite	48828	2.55	479
MO18DD059	263.00	264.00	Pegmatite	48829	1.95	731
MO18DD059	264.00	265.00	Pegmatite	48830	2.20	391
MO18DD059	265.00	266.00	Pegmatite	48831	0.60	631
MO18DD059	266.00	267.00	Pegmatite	48832	1.23	735
MO18DD059	267.00	268.00	Pegmatite	48833	1.95	276
MO18DD059	268.00	269.00	Pegmatite	48834	1.45	403
MO18DD059	269.00	270.00	Pegmatite	48835	3.42	679
MO18DD059	270.00	271.00	Pegmatite	48836	1.38	887
MO18DD059	271.00	272.00	Pegmatite	48837	1.56	292
MO18DD059	272.00	273.00	Pegmatite	48838	3.91	151
MO18DD059	273.00	274.00	Pegmatite	48839	3.91	241
MO18DD059	274.00	275.00	Pegmatite	48841	2.11	395
MO18DD059	275.00	276.00	Pegmatite	48842	2.54	721
MO18DD059	276.00	277.00	Pegmatite	48843	1.05	461
MO18DD059	277.00	278.00	Pegmatite	48844	2.82	280
MO18DD059	278.00	279.00	Pegmatite	48846	3.29	376
MO18DD059	279.00	280.00	Pegmatite	48847	2.25	622
MO18DD059	280.00	281.00	Pegmatite	48848	1.83	432



MO18DD059	281.00	282.00	Pegmatite	48849	2.30	195
MO18DD059	282.00	283.00	Pegmatite	48850	2.13	669
MO18DD059	283.00	284.00	Pegmatite	48851	0.25	236
MO18DD059	284.00	285.00	Pegmatite	48852	1.13	158
MO18DD059	285.00	286.00	Pegmatite	48853	1.77	156
MO18DD059	286.00	287.00	Pegmatite	48854	2.67	196
MO18DD059	287.00	288.00	Pegmatite	48856	1.58	314
MO18DD059	288.00	289.00	Pegmatite	48857	1.13	896
MO18DD059	289.00	290.00	Pegmatite	48858	1.27	619
MO18DD059	290.00	291.00	Pegmatite	48859	1.61	432
MO18DD059	291.00	292.00	Pegmatite	48861	2.21	561
MO18DD059	292.00	293.00	Pegmatite	48862	1.60	550
MO18DD059	293.00	294.00	Pegmatite	48863	1.16	426
MO18DD059	294.00	295.00	Pegmatite	48864	2.37	454
MO18DD059	295.00	296.00	Pegmatite	48866	1.86	921
MO18DD059	296.00	297.00	Pegmatite	48867	2.28	396
MO18DD059	297.00	298.00	Pegmatite	48868	2.49	543
MO18DD059	298.00	299.00	Pegmatite	48869	3.27	304
MO18DD059	299.00	300.00	Pegmatite	48870	2.37	1350
MO18DD059	300.00	301.00	Pegmatite	48871	1.30	161
MO18DD059	301.00	302.00	Pegmatite	48872	1.82	187
MO18DD059	302.00	303.00	Pegmatite	48873	2.32	178
MO18DD059	303.00	304.00	Pegmatite	48874	2.81	203
MO18DD059	304.00	305.00	Pegmatite	48875	1.23	161
MO18DD059	305.00	306.00	Pegmatite	48876	0.97	151
MO18DD059	306.00	307.00	Pegmatite	48877	1.73	191
MO18DD059	307.00	308.00	Pegmatite	48878	2.72	161
MO18DD059	308.00	309.00	Pegmatite	48879	1.29	93
MO18DD059	309.00	310.00	Pegmatite	48881	1.27	89
MO18DD059	310.00	311.00	Pegmatite	48882	1.55	240
MO18DD059	311.00	312.00	Pegmatite	48883	1.27	287
MO18DD059	312.00	313.00	Pegmatite	48884	1.64	1590
MO18DD059	313.00	314.00	Pegmatite	48886	1.22	1070
MO18DD059	314.00	315.00	Pegmatite	48887	1.98	202
MO18DD059	315.00	316.00	Pegmatite	48888	1.08	159
MO18DD059	316.00	317.00	Pegmatite	48889	1.21	208
MO18DD059	317.00	318.00	Pegmatite	48890	2.38	858
MO18DD059	318.00	319.00	Pegmatite	48891	2.16	486
MO18DD059	319.00	320.00	Pegmatite	48892	1.48	380
MO18DD059	320.00	321.00	Pegmatite	48893	1.98	354
MO18DD059	321.00	322.00	Pegmatite	48894	0.89	246
MO18DD059	322.00	323.00	Pegmatite	48896	2.20	175
MO18DD059	323.00	324.00	Pegmatite	48897	0.86	284
MO18DD059	324.00	325.00	Pegmatite	48898	0.95	756
MO18DD059	325.00	326.00	Pegmatite	48899	1.67	579
MO18DD059	326.00	327.00	Pegmatite	48901	0.90	416
MO18DD059	327.00	328.00	Pegmatite	48902	1.35	580
MO18DD059	328.00	329.00	Pegmatite	48903	2.66	311
MO18DD059	329.00	330.00	Pegmatite	48904	0.81	147
MO18DD059	330.00	331.00	Pegmatite	48906	0.82	140
MO18DD059	331.00	332.00	Pegmatite	48907	1.28	376

MO18DD059	332.00	333.00	Pegmatite	48908	0.95	428
MO18DD059	333.00	334.00	Pegmatite	48909	2.11	1230
MO18DD059	334.00	335.00	Pegmatite	48910	2.46	509
MO18DD059	335.00	336.00	Pegmatite	48911	2.10	436
MO18DD059	336.00	337.00	Pegmatite	48912	1.46	557
MO18DD059	337.00	338.00	Pegmatite	48913	1.39	659
MO18DD059	338.00	339.00	Pegmatite	48914	2.49	418
MO18DD059	339.00	340.00	Pegmatite	48915	2.86	482
MO18DD059	340.00	341.00	Pegmatite	48916	2.24	339
MO18DD059	341.00	342.00	Pegmatite	48917	0.66	328
MO18DD059	342.00	343.00	Pegmatite	48918	0.14	1030
MO18DD059	343.00	344.00	Pegmatite	48919	0.99	360
MO18DD059	344.00	345.00	Pegmatite	48921	0.91	458
MO18DD059	345.00	346.00	Pegmatite	48922	2.18	614
MO18DD059	346.00	347.00	Pegmatite	48923	1.30	833
MO18DD059	347.00	348.00	Pegmatite	48924	2.92	352
MO18DD059	348.00	349.00	Pegmatite	48926	1.23	511
MO18DD059	349.00	350.00	Pegmatite	48927	1.30	597
MO18DD059	350.00	351.00	Pegmatite	48928	1.60	1610
MO18DD059	351.00	352.00	Pegmatite	48929	1.91	1020
MO18DD059	352.00	353.00	Pegmatite	48930	0.87	729
MO18DD059	353.00	354.00	Pegmatite	48931	0.74	472
MO18DD059	354.00	355.00	Pegmatite	48932	1.32	597
MO18DD059	355.00	356.00	Pegmatite	48933	0.90	515
MO18DD059	356.00	357.00	Pegmatite	48934	1.80	408
MO18DD059	357.00	358.00	Pegmatite	48936	2.24	302
MO18DD059	358.00	359.00	Pegmatite	48937	1.74	378
MO18DD059	359.00	360.00	Pegmatite	48938	1.84	667
MO18DD059	360.00	361.00	Pegmatite	48939	1.05	925
MO18DD059	361.00	362.00	Pegmatite	48941	0.80	957
MO18DD059	362.00	363.00	Pegmatite	48942	1.50	1180
MO18DD059	363.00	364.00	Pegmatite	48943	1.25	741
MO18DD059	364.00	365.00	Pegmatite	48944	2.07	611
MO18DD059	365.00	366.00	Pegmatite	48946	1.58	930
MO18DD059	366.00	367.00	Pegmatite	48947	2.53	967
MO18DD059	367.00	368.00	Pegmatite	48948	1.43	447
MO18DD059	368.00	369.00	Pegmatite	48949	2.03	1880
MO18DD059	369.00	370.00	Pegmatite	48950	2.04	780
MO18DD059	370.00	371.00	Pegmatite	48951	2.67	871
MO18DD059	371.00	372.00	Pegmatite	48952	1.70	582
MO18DD059	372.00	373.00	Pegmatite	48953	2.10	822
MO18DD059	373.00	374.00	Pegmatite	48954	0.98	1000
MO18DD059	374.00	375.00	Pegmatite	48955	1.66	1080
MO18DD059	375.00	376.00	Pegmatite	48956	1.66	1260
MO18DD059	376.00	377.00	Pegmatite	48957	1.41	2060
MO18DD059	377.00	378.00	Pegmatite	48958	1.32	979
MO18DD059	378.00	379.00	Pegmatite	48959	0.66	1070
MO18DD059	379.00	380.00	Pegmatite	48961	1.07	855
MO18DD059	380.00	381.00	Pegmatite	48962	0.91	1010
MO18DD059	381.00	382.00	Pegmatite	48963	1.37	562
MO18DD059	382.00	383.00	Pegmatite	48964	1.47	1390

MO18DD059	383.00	384.00	Pegmatite	48966	1.07	997
MO18DD059	384.00	385.00	Pegmatite	48967	0.72	493
MO18DD059	385.00	386.00	Pegmatite	48968	0.06	923
MO18DD059	386.00	387.03	Pegmatite	48969	0.06	520
MO18DD059	387.03	388.00	Mica schist	48970	0.22	73
MO18DD059	388.00	389.00	Mica schist	48971	0.24	49
MO18DD060	0.00	3.28	Soil cover	NS_60		
MO18DD060	3.28	10.00	Mica schist	NS_60		
MO18DD060	10.00	11.00	Mica schist	26281	0.18	104
MO18DD060	11.00	12.00	Mica schist	26282	0.20	205
MO18DD060	12.00	12.35	Mica schist	NS_60_1		
MO18DD060	12.35	13.00	Pegmatite	26283	0.12	143
MO18DD060	13.00	14.00	Pegmatite	26284	0.06	270
MO18DD060	14.00	15.00	Pegmatite	26285	0.12	559
MO18DD060	15.00	16.00	Pegmatite	NS_60_2		
MO18DD060	16.00	17.00	Pegmatite	26286	0.08	90
MO18DD060	17.00	17.50	Pegmatite	26287	0.09	91
MO18DD060	17.50	18.10	Pegmatite	NS_60_3		
MO18DD060	18.10	18.70	Pegmatite	26288	0.24	238
MO18DD060	18.70	19.00	Pegmatite	NS_60_4		
MO18DD060	19.00	20.00	Pegmatite	26289	0.16	1240
MO18DD060	20.00	21.00	Pegmatite	26291	0.08	593
MO18DD060	21.00	22.00	Pegmatite	26292	0.09	683
MO18DD060	22.00	23.30	Pegmatite	26293	0.09	861
MO18DD060	23.30	23.50	Pegmatite	NS_60_5		
MO18DD060	23.50	24.00	Pegmatite	26294	0.17	1030
MO18DD060	24.00	25.00	Pegmatite	26296	0.13	838
MO18DD060	25.00	26.00	Mica schist	26297	0.35	148
MO18DD060	26.00	30.00	Mica schist	NS_60_6		
MO18DD060	30.00	31.00	Mica schist	26298	0.41	134
MO18DD060	31.00	31.76	Pegmatite	26299	0.09	758
MO18DD060	31.76	32.78	Pegmatite	NS_60_7		
MO18DD060	32.78	34.00	Pegmatite	26300	0.09	1140
MO18DD060	34.00	34.80	Pegmatite	NS_60_8		
MO18DD060	34.80	36.00	Pegmatite	26301	0.07	563
MO18DD060	36.00	37.00	Pegmatite	26302	0.04	982
MO18DD060	37.00	38.14	Pegmatite	26303	0.12	1050
MO18DD060	38.14	38.78	Pegmatite	NS_60_9		
MO18DD060	38.78	40.00	Pegmatite	26304	0.10	927
MO18DD060	40.00	41.00	Pegmatite	26306	0.08	923
MO18DD060	41.00	42.00	Pegmatite	26307	0.05	1570
MO18DD060	42.00	43.00	Pegmatite	26308	0.32	822
MO18DD060	43.00	44.00	Pegmatite	26309	0.10	1770
MO18DD060	44.00	45.00	Pegmatite	26311	0.09	773
MO18DD060	45.00	46.00	Pegmatite	26312	0.11	634
MO18DD060	46.00	46.58	Pegmatite	NS_60_10		
MO18DD060	46.58	47.00	Pegmatite	26313	0.04	667
MO18DD060	47.00	48.00	Pegmatite	26314	0.04	640
MO18DD060	48.00	49.00	Pegmatite	26316	0.10	754
MO18DD060	49.00	50.00	Pegmatite	26317	0.10	1290
MO18DD060	50.00	51.00	Pegmatite	26318	0.30	1930

MO18DD060	51.00	52.00	Pegmatite	26319	0.86	1060
MO18DD060	52.00	53.00	Pegmatite	26320	0.91	1600
MO18DD060	53.00	54.00	Pegmatite	26321	0.30	1280
MO18DD060	54.00	55.00	Pegmatite	26322	1.66	926
MO18DD060	55.00	56.00	Pegmatite	26323	1.46	453
MO18DD060	56.00	57.00	Pegmatite	26324	0.63	661
MO18DD060	57.00	58.00	Pegmatite	26325	0.75	1350
MO18DD060	58.00	59.00	Pegmatite	26326	0.13	821
MO18DD060	59.00	60.00	Pegmatite	26327	0.10	1140
MO18DD060	60.00	61.00	Pegmatite	26328	0.69	586
MO18DD060	61.00	62.00	Pegmatite	26329	0.89	836
MO18DD060	62.00	63.00	Pegmatite	26331	0.07	766
MO18DD060	63.00	64.00	Pegmatite	26332	0.05	2170
MO18DD060	64.00	65.00	Pegmatite	26333	0.06	2080
MO18DD060	65.00	66.00	Pegmatite	26334	0.05	897
MO18DD060	66.00	67.00	Pegmatite	26336	0.20	1250
MO18DD060	67.00	68.00	Pegmatite	26337	0.26	995
MO18DD060	68.00	69.00	Pegmatite	26338	0.73	581
MO18DD060	69.00	70.00	Pegmatite	26339	0.36	1050
MO18DD060	70.00	71.00	Pegmatite	26340	0.83	827
MO18DD060	71.00	72.00	Pegmatite	26341	1.18	588
MO18DD060	72.00	73.00	Pegmatite	26342	0.10	1370
MO18DD060	73.00	74.00	Pegmatite	26343	0.30	1130
MO18DD060	74.00	75.00	Pegmatite	26344	0.21	891
MO18DD060	75.00	76.00	Pegmatite	26346	0.40	1560
MO18DD060	76.00	77.00	Pegmatite	26347	1.18	1670
MO18DD060	77.00	78.00	Pegmatite	26348	0.22	1440
MO18DD060	78.00	79.00	Pegmatite	26349	0.06	1310
MO18DD060	79.00	80.00	Pegmatite	26351	0.10	1870
MO18DD060	80.00	81.00	Pegmatite	26352	0.22	1560
MO18DD060	81.00	82.00	Pegmatite	26353	0.22	680
MO18DD060	82.00	83.00	Pegmatite	26354	0.41	1260
MO18DD060	83.00	84.00	Pegmatite	26356	0.05	1700
MO18DD060	84.00	85.00	Pegmatite	26357	0.03	1000
MO18DD060	85.00	86.00	Pegmatite	26358	0.05	331
MO18DD060	86.00	87.00	Pegmatite	26359	0.02	101
MO18DD060	87.00	88.00	Pegmatite	26360	0.13	377
MO18DD060	88.00	89.00	Pegmatite	26361	0.06	1420
MO18DD060	89.00	90.00	Pegmatite	26362	0.05	1650
MO18DD060	90.00	91.00	Pegmatite	26363	0.03	526
MO18DD060	91.00	92.00	Pegmatite	26364	0.03	1130
MO18DD060	92.00	93.00	Pegmatite	26365	0.05	928
MO18DD060	93.00	94.00	Pegmatite	26366	0.05	1480
MO18DD060	94.00	95.00	Pegmatite	26367	0.04	1580
MO18DD060	95.00	96.00	Pegmatite	26368	0.07	1210
MO18DD060	96.00	97.00	Pegmatite	26369	0.04	1970
MO18DD060	97.00	98.00	Pegmatite	26371	0.04	2160
MO18DD060	98.00	99.00	Pegmatite	26372	0.06	981
MO18DD060	99.00	100.00	Pegmatite	26373	0.33	1430
MO18DD060	100.00	101.00	Pegmatite	26374	0.08	4070
MO18DD060	101.00	102.00	Pegmatite	26376	0.04	1820

MO18DD060	102.00	103.00	Pegmatite	26377	0.06	1950
MO18DD060	103.00	104.00	Pegmatite	26378	0.80	2020
MO18DD060	104.00	105.00	Pegmatite	26379	0.09	1110
MO18DD060	105.00	106.00	Pegmatite	26380	0.07	1750
MO18DD060	106.00	107.00	Pegmatite	26381	0.21	848
MO18DD060	107.00	108.00	Pegmatite	26382	0.21	1840
MO18DD060	108.00	109.00	Pegmatite	26383	0.02	523
MO18DD060	109.00	110.00	Pegmatite	26384	0.04	1150
MO18DD060	110.00	111.00	Pegmatite	26386	0.06	2320
MO18DD060	111.00	111.60	Pegmatite	26387	0.04	1770
MO18DD060	111.60	113.64	Pegmatite	NS_60_11		
MO18DD060	113.64	113.98	Pegmatite	26388	0.03	1320
MO18DD060	113.98	115.42	Pegmatite	NS_60_12		
MO18DD060	115.42	115.64	Pegmatite	26389	0.03	1320
MO18DD060	115.64	116.90	Pegmatite	NS_60_13		
MO18DD060	116.90	118.00	Pegmatite	26391	0.08	1090
MO18DD060	118.00	119.00	Pegmatite	26392	0.10	766
MO18DD060	119.00	120.00	Pegmatite	26393	0.10	706
MO18DD060	120.00	121.00	Pegmatite	26394	0.14	880
MO18DD060	121.00	122.00	Pegmatite	26396	0.12	745
MO18DD060	122.00	123.00	Pegmatite	26397	0.16	463
MO18DD060	123.00	124.00	Pegmatite	26398	0.11	928
MO18DD060	124.00	125.00	Pegmatite	26399	0.09	539
MO18DD060	125.00	126.00	Pegmatite	26400	0.16	562
MO18DD060	126.00	127.00	Pegmatite	26401	0.27	1270
MO18DD060	127.00	128.00	Pegmatite	26402	0.07	2240
MO18DD060	128.00	129.00	Pegmatite	26403	0.14	1580
MO18DD060	129.00	130.00	Pegmatite	26404	0.33	756
MO18DD060	130.00	131.00	Pegmatite	26405	0.21	714
MO18DD060	131.00	132.00	Pegmatite	26406	0.99	1210
MO18DD060	132.00	133.00	Pegmatite	26407	0.39	1710
MO18DD060	133.00	134.00	Pegmatite	26408	0.17	1460
MO18DD060	134.00	135.00	Pegmatite	26409	0.05	1750
MO18DD060	135.00	136.00	Pegmatite	26411	0.05	1200
MO18DD060	136.00	137.00	Pegmatite	26412	0.27	1410
MO18DD060	137.00	138.00	Pegmatite	26413	0.03	1150
MO18DD060	138.00	139.00	Pegmatite	26414	0.03	1470
MO18DD060	139.00	140.00	Pegmatite	26416	0.04	1910
MO18DD060	140.00	141.00	Pegmatite	26417	0.03	709
MO18DD060	141.00	142.00	Pegmatite	26418	0.04	800
MO18DD060	142.00	143.00	Pegmatite	26419	0.02	1130
MO18DD060	143.00	144.00	Pegmatite	26420	0.03	1610
MO18DD060	144.00	145.00	Pegmatite	26421	0.04	1220
MO18DD060	145.00	146.00	Pegmatite	26422	0.06	878
MO18DD060	146.00	147.00	Pegmatite	26423	0.02	1710
MO18DD060	147.00	148.00	Pegmatite	26424	0.01	933
MO18DD060	148.00	149.00	Pegmatite	26426	0.03	526
MO18DD060	149.00	150.00	Pegmatite	26427	0.07	706
MO18DD060	150.00	151.00	Pegmatite	26428	0.07	709
MO18DD060	151.00	152.00	Pegmatite	26429	0.11	1060
MO18DD060	152.00	153.00	Pegmatite	26431	0.16	887

MO18DD060	153.00	154.00	Pegmatite	26432	0.49	416
MO18DD060	154.00	155.00	Pegmatite	26433	0.30	1000
MO18DD060	155.00	156.00	Pegmatite	26434	0.93	793
MO18DD060	156.00	157.00	Pegmatite	26436	0.63	1010
MO18DD060	157.00	158.00	Pegmatite	26437	0.24	1120
MO18DD060	158.00	159.00	Pegmatite	26438	0.16	378
MO18DD060	159.00	160.00	Pegmatite	26439	0.06	1820
MO18DD060	160.00	161.00	Pegmatite	26440	0.05	535
MO18DD060	161.00	162.00	Pegmatite	26441	0.05	784
MO18DD060	162.00	163.00	Pegmatite	26442	0.08	3890
MO18DD060	163.00	164.00	Pegmatite	26443	0.03	1240
MO18DD060	164.00	165.00	Pegmatite	26444	0.03	757
MO18DD060	165.00	166.00	Pegmatite	26445	0.03	951
MO18DD060	166.00	167.00	Pegmatite	26446	0.04	1090
MO18DD060	167.00	168.00	Pegmatite	26447	0.06	847
MO18DD060	168.00	169.00	Pegmatite	26448	0.06	1200
MO18DD060	169.00	170.00	Pegmatite	26449	0.05	1490
MO18DD060	170.00	171.00	Pegmatite	26451	0.05	1710
MO18DD060	171.00	172.00	Pegmatite	26452	0.03	1340
MO18DD060	172.00	173.00	Pegmatite	26453	0.03	595
MO18DD060	173.00	174.10	Pegmatite	26454	0.04	3180
MO18DD060	174.10	175.00	Mica schist	26456	0.09	203
MO18DD060	175.00	176.00	Mica schist	26457	0.08	76
MO18DD061	0.00	12.12	Soil cover	NS_61		
MO18DD061	12.12	13.12	Soil cover	37801	0.13	400
MO18DD061	13.12	14.12	Soil cover	37802	0.21	421
MO18DD061	14.12	15.00	Pegmatite	37803	0.74	1170
MO18DD061	15.00	16.00	Pegmatite	37804	1.37	1605
MO18DD061	16.00	17.00	Pegmatite	37805	1.63	557
MO18DD061	17.00	18.00	Pegmatite	37806	1.42	959
MO18DD061	18.00	19.00	Pegmatite	37807	1.13	681
MO18DD061	19.00	20.00	Pegmatite	37808	1.00	1305
MO18DD061	20.00	21.00	Pegmatite	37809	0.95	1035
MO18DD061	21.00	21.50	Pegmatite	37811	0.87	859
MO18DD061	21.50	21.66	Pegmatite	NS_61_01		
MO18DD061	21.66	22.66	Pegmatite	37812	1.17	1140
MO18DD061	22.66	23.66	Pegmatite	37813	0.12	1345
MO18DD061	23.66	24.55	Pegmatite	37814	0.14	1195
MO18DD061	24.55	24.66	Pegmatite	NS_61_02		
MO18DD061	24.66	26.00	Pegmatite	37816	0.13	1330
MO18DD061	26.00	27.00	Pegmatite	37817	1.06	1145
MO18DD061	27.00	28.00	Pegmatite	37818	1.79	1055
MO18DD061	28.00	29.40	Pegmatite	37819	1.29	1790
MO18DD061	29.40	29.53	Pegmatite	NS_61_03		
MO18DD061	29.53	30.14	Pegmatite	37820	1.31	903
MO18DD061	30.14	30.30	Pegmatite	NS_61_04		
MO18DD061	30.30	31.00	Pegmatite	37821	1.88	565
MO18DD061	31.00	32.00	Pegmatite	37822	1.28	1140
MO18DD061	32.00	33.00	Pegmatite	37823	1.71	1190
MO18DD061	33.00	34.00	Pegmatite	37824	1.84	1540
MO18DD061	34.00	35.00	Pegmatite	37826	1.21	1060

MO18DD061	35.00	36.00	Pegmatite	37827	1.71	1595
MO18DD061	36.00	37.00	Pegmatite	37828	1.89	2030
MO18DD061	37.00	38.00	Pegmatite	37829	2.82	345
MO18DD061	38.00	39.00	Pegmatite	37831	1.31	825
MO18DD061	39.00	40.00	Pegmatite	37832	2.18	752
MO18DD061	40.00	41.00	Pegmatite	37833	1.65	273
MO18DD061	41.00	42.00	Pegmatite	37834	0.47	1645
MO18DD061	42.00	43.00	Pegmatite	37836	1.47	727
MO18DD061	43.00	43.62	Pegmatite	37837	0.62	101
MO18DD061	43.62	43.74	Pegmatite	NS_61_05		
MO18DD061	43.74	45.00	Pegmatite	37838	1.85	934
MO18DD061	45.00	46.00	Pegmatite	37839	0.62	101
MO18DD061	46.00	47.00	Pegmatite	37840	1.03	706
MO18DD061	47.00	48.00	Pegmatite	37841	1.10	576
MO18DD061	48.00	49.00	Pegmatite	37842	2.12	1075
MO18DD061	49.00	50.00	Pegmatite	37843	2.72	530
MO18DD061	50.00	51.00	Pegmatite	37844	2.38	1090
MO18DD061	51.00	52.00	Pegmatite	37845	2.95	382
MO18DD061	52.00	53.00	Pegmatite	37846	1.68	1130
MO18DD061	53.00	54.00	Pegmatite	37847	1.06	2300
MO18DD061	54.00	55.00	Pegmatite	37848	0.34	1080
MO18DD061	55.00	56.00	Pegmatite	37849	0.98	1040
MO18DD061	56.00	57.00	Pegmatite	37851	1.77	1255
MO18DD061	57.00	58.00	Pegmatite	37852	2.03	1265
MO18DD061	58.00	59.00	Pegmatite	37853	3.07	468
MO18DD061	59.00	60.00	Pegmatite	37854	1.20	1020
MO18DD061	60.00	61.00	Pegmatite	37856	2.43	920
MO18DD061	61.00	62.00	Pegmatite	37857	1.69	814
MO18DD061	62.00	63.00	Pegmatite	37858	1.59	3650
MO18DD061	63.00	64.00	Pegmatite	37859	2.18	888
MO18DD061	64.00	65.00	Pegmatite	37860	1.26	1795
MO18DD061	65.00	66.00	Pegmatite	37861	2.37	1045
MO18DD061	66.00	67.00	Pegmatite	37862	1.47	486
MO18DD061	67.00	68.00	Pegmatite	37863	1.06	779
MO18DD061	68.00	69.03	Pegmatite	37864	1.13	945
MO18DD061	69.03	70.00	Mica schist	37866	0.65	191
MO18DD061	70.00	71.00	Mica schist	37867	0.55	119
MO18DD061	71.00	71.50	Mica schist	NS_61_06		
MO18DD061	71.50	72.50	Mica schist	37868	0.43	65
MO18DD061	72.50	73.50	Mica schist	37869	0.44	75
MO18DD061	73.50	74.06	Pegmatite	37871	0.07	275
MO18DD061	74.06	75.00	Mica schist	37872	0.55	175
MO18DD061	75.00	75.71	Mica schist	37873	0.59	126
MO18DD061	75.71	77.00	Pegmatite	37874	0.87	825
MO18DD061	77.00	78.00	Pegmatite	37876	1.55	888
MO18DD061	78.00	79.00	Pegmatite	37877	1.99	1165
MO18DD061	79.00	80.00	Pegmatite	37878	0.84	1075
MO18DD061	80.00	81.00	Pegmatite	37879	2.66	1615
MO18DD061	81.00	82.00	Pegmatite	37880	1.43	2260
MO18DD061	82.00	83.00	Pegmatite	37881	1.40	919
MO18DD061	83.00	84.00	Pegmatite	37882	1.87	547

MO18DD061	84.00	85.00	Pegmatite	37883	0.61	95
MO18DD061	85.00	86.00	Pegmatite	37884	1.83	226
MO18DD061	86.00	87.00	Pegmatite	37885	1.57	458
MO18DD061	87.00	88.00	Pegmatite	37886	1.23	979
MO18DD061	88.00	89.00	Pegmatite	37887	2.24	1560
MO18DD061	89.00	90.00	Pegmatite	37888	2.20	1705
MO18DD061	90.00	91.00	Pegmatite	37889	1.34	1000
MO18DD061	91.00	92.00	Pegmatite	37891	2.36	646
MO18DD061	92.00	93.00	Pegmatite	37892	1.68	1540
MO18DD061	93.00	94.00	Pegmatite	37893	1.34	1125
MO18DD061	94.00	95.00	Pegmatite	37894	2.31	447
MO18DD061	95.00	96.00	Pegmatite	37896	1.24	1885
MO18DD061	96.00	97.00	Pegmatite	37897	0.83	872
MO18DD061	97.00	98.00	Pegmatite	37898	2.15	1075
MO18DD061	98.00	99.00	Pegmatite	37899	2.00	1130
MO18DD061	99.00	100.00	Pegmatite	37900	2.07	1025
MO18DD061	100.00	101.00	Pegmatite	37901	1.54	1185
MO18DD061	101.00	102.00	Pegmatite	37902	1.37	1835
MO18DD061	102.00	103.00	Pegmatite	37903	1.72	1410
MO18DD061	103.00	104.00	Pegmatite	37904	0.99	1525
MO18DD061	104.00	105.00	Pegmatite	37906	1.93	1455
MO18DD061	105.00	106.00	Pegmatite	37907	1.52	858
MO18DD061	106.00	107.00	Pegmatite	37908	1.97	717
MO18DD061	107.00	108.00	Pegmatite	37909	1.77	1650
MO18DD061	108.00	109.00	Pegmatite	37911	0.62	206
MO18DD061	109.00	110.00	Pegmatite	37912	0.41	1330
MO18DD061	110.00	111.00	Pegmatite	37913	1.82	597
MO18DD061	111.00	112.00	Pegmatite	37914	1.33	826
MO18DD061	112.00	113.00	Pegmatite	37916	1.44	496
MO18DD061	113.00	114.00	Pegmatite	37917	2.00	858
MO18DD061	114.00	115.00	Pegmatite	37918	2.49	357
MO18DD061	115.00	116.00	Pegmatite	37919	2.59	1150
MO18DD061	116.00	117.00	Pegmatite	37920	0.64	3210
MO18DD061	117.00	118.00	Pegmatite	37921	1.36	2470
MO18DD061	118.00	119.00	Pegmatite	37922	2.37	1265
MO18DD061	119.00	120.00	Pegmatite	37923	2.76	774
MO18DD061	120.00	121.00	Pegmatite	37924	2.48	251
MO18DD061	121.00	122.00	Pegmatite	37925	2.03	812
MO18DD061	122.00	123.00	Pegmatite	37926	1.68	674
MO18DD061	123.00	124.00	Pegmatite	37927	1.99	919
MO18DD061	124.00	125.00	Pegmatite	37928	1.77	1735
MO18DD061	125.00	126.00	Pegmatite	37929	1.90	300
MO18DD061	126.00	127.00	Pegmatite	37931	1.50	428
MO18DD061	127.00	128.00	Pegmatite	37932	2.31	291
MO18DD061	128.00	129.00	Pegmatite	37933	1.07	209
MO18DD061	129.00	130.00	Pegmatite	37934	0.51	158
MO18DD061	130.00	131.00	Pegmatite	37936	1.72	392
MO18DD061	131.00	132.00	Pegmatite	37937	1.02	678
MO18DD061	132.00	133.00	Pegmatite	37938	2.38	1550
MO18DD061	133.00	134.00	Pegmatite	37939	1.07	989
MO18DD061	134.00	135.00	Pegmatite	37940	1.14	310



MO18DD061	135.00	136.00	Pegmatite	37941	1.94	1685
MO18DD061	136.00	137.00	Pegmatite	37942	1.38	586
MO18DD061	137.00	138.00	Pegmatite	37943	1.33	761
MO18DD061	138.00	139.00	Pegmatite	37944	1.48	933
MO18DD061	139.00	140.00	Pegmatite	37946	1.01	1225
MO18DD061	140.00	141.00	Pegmatite	37947	2.25	698
MO18DD061	141.00	142.00	Pegmatite	37948	2.01	1095
MO18DD061	142.00	143.00	Pegmatite	37949	1.89	901
MO18DD061	143.00	144.00	Pegmatite	37951	1.75	764
MO18DD061	144.00	145.00	Pegmatite	37952	1.51	695
MO18DD061	145.00	146.00	Pegmatite	37953	1.66	391
MO18DD061	146.00	147.00	Pegmatite	37954	1.30	603
MO18DD061	147.00	148.00	Pegmatite	37956	1.83	300
MO18DD061	148.00	149.00	Pegmatite	37957	1.80	574
MO18DD061	149.00	150.00	Pegmatite	37958	2.08	616
MO18DD061	150.00	151.00	Pegmatite	37959	1.47	540
MO18DD061	151.00	152.00	Pegmatite	37960	2.77	1290
MO18DD061	152.00	153.00	Pegmatite	37961	2.28	1660
MO18DD061	153.00	154.00	Pegmatite	37962	1.60	1390
MO18DD061	154.00	155.00	Pegmatite	37963	1.42	835
MO18DD061	155.00	156.00	Pegmatite	37964	0.16	1140
MO18DD061	156.00	157.00	Pegmatite	37965	1.22	542
MO18DD061	157.00	158.00	Pegmatite	37966	0.86	740
MO18DD061	158.00	159.00	Pegmatite	37967	0.18	336
MO18DD061	159.00	160.00	Pegmatite	37968	0.12	146
MO18DD061	160.00	161.00	Pegmatite	37969	0.10	319
MO18DD061	161.00	162.00	Pegmatite	37971	1.33	1655
MO18DD061	162.00	163.00	Pegmatite	37972	1.64	1105
MO18DD061	163.03	164.00	Mica schist	37973	0.34	108
MO18DD061	164.00	165.00	Mica schist	37974	0.35	91
MO18DD061	165.00	166.14	Mica schist	37976	0.36	98
MO18DD061	166.14	167.32	Pegmatite	37977	0.12	912
MO18DD061	167.32	168.00	Mica schist	37978	0.33	154
MO18DD061	168.00	169.00	Mica schist	37979	0.44	156
MO18DD061	169.00	170.00	Mica schist	37980	0.39	134
MO18DD061	170.00	170.80	Mica schist	37981	0.38	114
MO18DD061	170.80	172.00	Pegmatite	37982	1.08	778
MO18DD061	172.00	173.00	Pegmatite	37983	1.79	1295
MO18DD061	173.00	174.00	Pegmatite	37984	1.56	1245
MO18DD061	174.00	175.00	Pegmatite	37986	1.34	1140
MO18DD061	175.00	176.00	Pegmatite	37987	1.92	953
MO18DD061	176.00	177.00	Pegmatite	37988	1.24	790
MO18DD061	177.00	178.00	Pegmatite	37989	1.00	1180
MO18DD061	178.00	179.30	Pegmatite	37991	1.66	891
MO18DD061	179.30	179.59	Pegmatite	NS_61_07		
MO18DD061	179.59	181.00	Pegmatite	37992	0.44	1090
MO18DD061	181.00	182.00	Pegmatite	37993	0.12	1455
MO18DD061	182.00	183.00	Pegmatite	37994	1.29	1330
MO18DD061	183.00	184.00	Pegmatite	37996	1.06	1030
MO18DD061	184.00	185.00	Pegmatite	37997	0.17	1130
MO18DD061	185.00	186.00	Pegmatite	37998	0.47	1425

MO18DD061	186.00	187.00	Pegmatite	37999	1.72	915
MO18DD061	187.00	188.00	Pegmatite	38000	1.38	1150
MO18DD061	188.00	189.00	Pegmatite	38001	1.01	1180
MO18DD061	189.00	190.00	Pegmatite	38002	1.49	1060
MO18DD061	190.00	191.00	Pegmatite	38003	2.23	1005
MO18DD061	191.00	192.00	Pegmatite	38004	1.30	866
MO18DD061	192.00	193.00	Pegmatite	38005	0.25	1625
MO18DD061	193.00	194.00	Pegmatite	38006	0.86	974
MO18DD061	194.00	195.00	Pegmatite	38007	1.88	1255
MO18DD061	195.00	196.00	Pegmatite	38008	2.76	866
MO18DD061	196.00	197.00	Pegmatite	38009	1.21	955
MO18DD061	197.00	198.00	Pegmatite	38011	0.86	1570
MO18DD061	198.00	199.00	Pegmatite	38012	0.54	1445
MO18DD061	199.00	200.00	Pegmatite	38013	0.83	1100
MO18DD061	200.00	201.00	Pegmatite	38014	1.74	397
MO18DD061	201.00	202.00	Pegmatite	38016	2.14	192
MO18DD061	202.00	203.00	Pegmatite	38017	1.59	107
MO18DD061	203.00	204.00	Pegmatite	38018	1.22	454
MO18DD061	204.00	205.00	Pegmatite	38019	1.03	382
MO18DD061	205.00	206.00	Pegmatite	38020	1.55	407
MO18DD061	206.00	207.00	Pegmatite	38021	1.03	707
MO18DD061	207.00	208.00	Pegmatite	38022	0.74	287
MO18DD061	208.00	209.00	Pegmatite	38023	0.05	363
MO18DD061	209.00	210.00	Pegmatite	38024	0.03	205
MO18DD061	210.00	211.00	Pegmatite	38026	0.01	545
MO18DD061	211.00	212.00	Pegmatite	38027	0.01	508
MO18DD061	212.00	213.00	Pegmatite	38028	0.02	690
MO18DD061	213.00	214.00	Pegmatite	38029	0.03	325
MO18DD061	214.00	215.00	Pegmatite	38031	0.02	412
MO18DD061	215.00	216.00	Pegmatite	38032	0.02	1260
MO18DD061	216.00	217.00	Pegmatite	38033	0.03	1150
MO18DD061	217.00	218.00	Pegmatite	38034	0.05	900
MO18DD061	218.00	219.00	Pegmatite	38036	0.30	508
MO18DD061	219.00	220.00	Pegmatite	38037	0.05	444
MO18DD061	220.00	221.00	Pegmatite	38038	0.45	772
MO18DD061	221.00	222.24	Pegmatite	38039	0.06	369
MO18DD061	222.24	223.24	Mica schist	38040	0.24	68
MO18DD061	223.24	224.24	Mica schist	38041	0.25	52
MO18DD062	0.00	5.93	Soil cover	NS_62		
MO18DD062	5.93	8.50	Laterite	NS_62		
MO18DD062	8.50	9.30	Quartzite	NS_62		
MO18DD062	9.30	34.00	Mica schist	NS_62		
MO18DD062	34.00	35.25	Quartz vein	NS_62		
MO18DD062	35.25	42.05	Mica schist	NS_62		
MO18DD062	42.05	42.67	Greisen	NS_62		
MO18DD062	42.67	64.85	Mica schist	NS_62		
MO18DD062	64.85	82.59	Mica schist	NS_62		
MO18DD062	82.59	83.37	Mica schist	NS_62		
MO18DD062	83.37	84.44	Mica schist	NS_62		
MO18DD062	84.44	87.00	Mica schist	NS_62		
MO18DD062	87.00	88.00	Mica schist	26461	0.07	150

MO18DD062	88.00	88.55	Mica schist	26462	0.06	246
MO18DD062	88.55	89.00	Greisen	26463	0.02	110
MO18DD062	89.00	90.00	Pegmatite	26464	0.01	74
MO18DD062	90.00	91.00	Pegmatite	26465	0.01	49
MO18DD062	91.00	92.00	Pegmatite	26466	0.01	79
MO18DD062	92.00	92.52	Pegmatite	26467	0.06	171
MO18DD062	92.52	93.86	Mica schist	26468	0.63	642
MO18DD062	93.86	95.00	Pegmatite	26469	0.05	416
MO18DD062	95.00	95.84	Pegmatite	26471	0.02	95
MO18DD062	95.84	96.30	Mica schist	26472	0.65	547
MO18DD062	96.30	97.00	Pegmatite	26473	0.06	127
MO18DD062	97.00	98.00	Pegmatite	26474	0.14	456
MO18DD062	98.00	99.00	Pegmatite	26476	0.03	95
MO18DD062	99.00	100.03	Pegmatite	26477	0.02	77
MO18DD062	100.03	101.00	Mica schist	26478	0.12	230
MO18DD062	101.00	106.00	Mica schist	NS_62_1		
MO18DD062	106.00	107.29	Mica schist	26479	0.05	108
MO18DD062	107.29	108.00	Pegmatite	26480	0.03	150
MO18DD062	108.00	109.00	Pegmatite	26481	0.02	58
MO18DD062	109.00	110.00	Pegmatite	26482	0.02	38
MO18DD062	110.00	111.00	Pegmatite	26483	0.01	110
MO18DD062	111.00	112.00	Pegmatite	26484	0.02	67
MO18DD062	112.00	113.00	Pegmatite	26486	0.02	54
MO18DD062	113.00	114.00	Pegmatite	26487	0.02	48
MO18DD062	114.00	115.00	Pegmatite	26488	0.02	95
MO18DD062	115.00	116.00	Pegmatite	26489	0.01	110
MO18DD062	116.00	117.00	Pegmatite	26491	0.01	82
MO18DD062	117.00	118.00	Pegmatite	26492	0.01	63
MO18DD062	118.00	119.00	Pegmatite	26493	0.02	73
MO18DD062	119.00	120.00	Pegmatite	26494	0.02	66
MO18DD062	120.00	121.00	Pegmatite	26496	0.02	75
MO18DD062	121.00	122.00	Pegmatite	26497	0.05	87
MO18DD062	122.00	123.00	Pegmatite	26498	0.04	90
MO18DD062	123.00	124.05	Pegmatite	26499	0.05	110
MO18DD062	124.05	125.00	Mica schist	26500	0.18	156
MO18DD062	125.00	129.00	Mica schist	NS_62_2		
MO18DD062	129.00	130.06	Mica schist	26501	0.43	480
MO18DD062	130.06	131.00	Pegmatite	26502	0.05	97
MO18DD062	131.00	132.00	Pegmatite	26503	0.04	73
MO18DD062	132.00	133.00	Pegmatite	26504	0.06	85
MO18DD062	133.00	134.00	Pegmatite	26505	0.14	200
MO18DD062	134.00	135.00	Pegmatite	26506	0.05	276
MO18DD062	135.00	136.00	Pegmatite	26507	0.05	278
MO18DD062	136.00	137.00	Pegmatite	26508	0.04	136
MO18DD062	137.00	138.23	Pegmatite	26509	0.05	64
MO18DD062	138.23	139.65	Mica schist	26511	0.63	474
MO18DD062	139.65	141.00	Pegmatite	26512	0.05	106
MO18DD062	141.00	142.00	Greisen	26513	0.04	105
MO18DD062	142.00	143.23	Greisen	26514	0.07	169
MO18DD062	143.23	144.00	Mica schist	26516	0.26	163
MO18DD062	144.00	151.00	Mica schist	NS_62_3		

MO18DD062	151.00	151.45	Mica schist	26517	0.31	127
MO18DD062	151.45	152.00	Pegmatite	26518	0.08	126
MO18DD062	152.00	153.00	Pegmatite	26519	0.10	95
MO18DD062	153.00	154.00	Pegmatite	26520	0.08	107
MO18DD062	154.00	155.00	Pegmatite	26521	0.10	56
MO18DD062	155.00	156.00	Pegmatite	26522	0.04	81
MO18DD062	156.00	157.00	Pegmatite	26523	0.08	81
MO18DD062	157.00	158.00	Pegmatite	26524	0.15	97
MO18DD062	158.00	159.00	Pegmatite	26526	0.18	134
MO18DD062	159.00	160.00	Pegmatite	26527	0.14	142
MO18DD062	160.00	161.00	Pegmatite	26528	0.15	146
MO18DD062	161.00	162.00	Pegmatite	26529	0.09	210
MO18DD062	162.00	163.00	Pegmatite	26531	0.06	511
MO18DD062	163.00	164.00	Pegmatite	26532	0.06	53
MO18DD062	164.00	165.00	Pegmatite	26533	0.12	120
MO18DD062	165.00	166.00	Pegmatite	26534	0.11	690
MO18DD062	166.00	167.00	Pegmatite	26536	0.10	110
MO18DD062	167.00	168.00	Pegmatite	26537	0.10	103
MO18DD062	168.00	169.00	Pegmatite	26538	0.10	95
MO18DD062	169.00	170.00	Pegmatite	26539	0.13	127
MO18DD062	170.00	171.00	Pegmatite	26540	0.09	269
MO18DD062	171.00	172.00	Pegmatite	26541	0.07	760
MO18DD062	172.00	173.00	Pegmatite	26542	0.10	928
MO18DD062	173.00	174.00	Pegmatite	26543	0.68	1080
MO18DD062	174.00	175.00	Pegmatite	26544	1.72	1010
MO18DD062	175.00	176.00	Pegmatite	26545	2.11	1260
MO18DD062	176.00	177.00	Pegmatite	26546	1.91	807
MO18DD062	177.00	178.00	Pegmatite	26547	1.40	956
MO18DD062	178.00	179.00	Pegmatite	26548	1.03	1090
MO18DD062	179.00	180.00	Pegmatite	26549	1.56	1590
MO18DD062	180.00	181.00	Pegmatite	26551	1.34	1280
MO18DD062	181.00	182.00	Pegmatite	26552	1.28	681
MO18DD062	182.00	183.00	Pegmatite	26553	1.63	1370
MO18DD062	183.00	184.00	Pegmatite	26554	0.77	917
MO18DD062	184.00	185.00	Pegmatite	26556	1.84	1180
MO18DD062	185.00	186.00	Pegmatite	26557	2.08	639
MO18DD062	186.00	187.00	Pegmatite	26558	1.80	949
MO18DD062	187.00	188.00	Pegmatite	26559	1.46	788
MO18DD062	188.00	189.00	Pegmatite	26560	1.49	1190
MO18DD062	189.00	190.00	Pegmatite	26561	1.07	1020
MO18DD062	190.00	191.00	Pegmatite	26562	0.96	638
MO18DD062	191.00	192.00	Pegmatite	26563	0.09	555
MO18DD062	192.00	193.00	Pegmatite	26564	0.12	969
MO18DD062	193.00	194.00	Pegmatite	26566	0.89	887
MO18DD062	194.00	195.00	Pegmatite	26567	1.23	999
MO18DD062	195.00	196.00	Pegmatite	26568	0.80	424
MO18DD062	196.00	197.00	Pegmatite	26569	1.13	863
MO18DD062	197.00	198.00	Pegmatite	26571	1.46	881
MO18DD062	198.00	199.00	Pegmatite	26572	2.22	633
MO18DD062	199.00	200.00	Pegmatite	26573	1.06	344
MO18DD062	200.00	201.00	Pegmatite	26574	0.19	446

MO18DD062	201.00	202.00	Pegmatite	26576	0.49	191
MO18DD062	202.00	203.00	Pegmatite	26577	1.26	2240
MO18DD062	203.00	204.00	Pegmatite	26578	1.15	682
MO18DD062	204.00	205.00	Pegmatite	26579	2.97	196
MO18DD062	205.00	206.00	Pegmatite	26580	1.97	144
MO18DD062	206.00	207.00	Pegmatite	26581	1.64	204
MO18DD062	207.00	208.00	Pegmatite	26582	1.62	210
MO18DD062	208.00	209.00	Pegmatite	26583	1.72	848
MO18DD062	209.00	210.00	Pegmatite	26584	1.44	486
MO18DD062	210.00	211.00	Pegmatite	26585	1.19	972
MO18DD062	211.00	212.00	Pegmatite	26586	2.22	429
MO18DD062	212.00	213.00	Pegmatite	26587	1.91	1100
MO18DD062	213.00	214.00	Pegmatite	26588	1.11	370
MO18DD062	214.00	215.00	Pegmatite	26589	0.87	470
MO18DD062	215.00	216.00	Pegmatite	26591	1.97	609
MO18DD062	216.00	217.00	Pegmatite	26592	1.92	285
MO18DD062	217.00	218.00	Pegmatite	26593	1.57	1240
MO18DD062	218.00	219.00	Pegmatite	26594	0.73	890
MO18DD062	219.00	220.00	Pegmatite	26596	1.31	944
MO18DD062	220.00	221.00	Pegmatite	26597	0.07	591
MO18DD062	221.00	222.00	Pegmatite	26598	0.24	511
MO18DD062	222.00	223.00	Pegmatite	26599	2.30	548
MO18DD062	223.00	224.00	Pegmatite	26600	1.53	579
MO18DD062	224.00	225.00	Pegmatite	26601	0.99	1320
MO18DD062	225.00	226.00	Pegmatite	26602	1.64	921
MO18DD062	226.00	227.00	Pegmatite	26603	0.59	886
MO18DD062	227.00	228.00	Pegmatite	26604	1.71	1450
MO18DD062	228.00	229.00	Pegmatite	26606	1.28	208
MO18DD062	229.00	230.00	Pegmatite	26607	2.73	470
MO18DD062	230.00	231.00	Pegmatite	26608	2.03	1070
MO18DD062	231.00	232.00	Pegmatite	26609	0.75	1380
MO18DD062	232.00	233.00	Pegmatite	26611	0.74	607
MO18DD062	233.00	234.00	Pegmatite	26612	0.73	935
MO18DD062	234.00	235.00	Pegmatite	26613	1.06	1460
MO18DD062	235.00	236.00	Pegmatite	26614	0.76	948
MO18DD062	236.00	237.00	Pegmatite	26616	0.95	949
MO18DD062	237.00	238.00	Pegmatite	26617	0.88	1530
MO18DD062	238.00	239.00	Pegmatite	26618	0.95	1140
MO18DD062	239.00	240.00	Pegmatite	26619	0.62	1240
MO18DD062	240.00	241.00	Pegmatite	26620	1.98	752
MO18DD062	241.00	242.00	Pegmatite	26621	0.98	884
MO18DD062	242.00	243.00	Pegmatite	26622	0.29	1880
MO18DD062	243.00	244.00	Pegmatite	26623	0.09	540
MO18DD062	244.00	245.00	Pegmatite	26624	0.92	1370
MO18DD062	245.00	246.00	Pegmatite	26625	1.81	790
MO18DD062	246.00	247.00	Pegmatite	26626	1.34	989
MO18DD062	247.00	248.00	Pegmatite	26627	0.85	1010
MO18DD062	248.00	249.00	Pegmatite	26628	0.38	845
MO18DD062	249.00	250.00	Pegmatite	26629	0.48	972
MO18DD062	250.00	251.00	Pegmatite	26631	0.22	1320
MO18DD062	251.00	252.00	Pegmatite	26632	0.68	1700

MO18DD062	252.00	253.00	Pegmatite	26633	0.66	573
MO18DD062	253.00	254.00	Pegmatite	26634	2.91	1360
MO18DD062	254.00	255.00	Pegmatite	26636	0.68	1610
MO18DD062	255.00	256.00	Pegmatite	26637	0.47	1240
MO18DD062	256.00	257.00	Pegmatite	26638	0.75	751
MO18DD062	257.00	258.00	Pegmatite	26639	0.69	581
MO18DD062	258.00	259.00	Pegmatite	26640	0.74	643
MO18DD062	259.00	260.00	Pegmatite	26641	0.18	114
MO18DD062	260.00	261.00	Pegmatite	26642	0.39	408
MO18DD062	261.00	262.00	Pegmatite	26643	0.80	197
MO18DD062	262.00	263.00	Pegmatite	26644	0.30	219
MO18DD062	263.00	264.00	Pegmatite	26646	0.10	109
MO18DD062	264.00	265.00	Pegmatite	26647	0.12	97
MO18DD062	265.00	266.00	Pegmatite	26648	0.13	171
MO18DD062	266.00	267.00	Pegmatite	26649	0.18	165
MO18DD062	267.00	268.00	Pegmatite	26651	0.10	77
MO18DD062	268.00	269.00	Pegmatite	26652	0.07	80
MO18DD062	269.00	270.00	Pegmatite	26653	0.05	67
MO18DD062	270.00	271.00	Pegmatite	26654	0.03	73
MO18DD062	271.00	272.00	Pegmatite	26656	0.04	98
MO18DD062	272.00	273.00	Pegmatite	26657	0.02	55
MO18DD062	273.00	274.00	Pegmatite	26658	0.03	51
MO18DD062	274.00	275.00	Pegmatite	26659	0.04	76
MO18DD062	275.00	276.00	Pegmatite	26660	0.04	68
MO18DD062	276.00	277.00	Pegmatite	26661	0.10	75
MO18DD062	277.00	278.00	Pegmatite	26662	0.18	134
MO18DD062	278.00	279.00	Pegmatite	26663	0.14	122
MO18DD062	279.00	280.00	Pegmatite	26664	0.27	195
MO18DD062	280.00	281.00	Pegmatite	26665	0.11	144
MO18DD062	281.00	282.00	Pegmatite	26666	0.14	209
MO18DD062	282.00	283.00	Pegmatite	26667	0.05	104
MO18DD062	283.00	284.00	Pegmatite	26668	0.39	667
MO18DD062	284.00	285.00	Pegmatite	26669	0.05	109
MO18DD062	285.00	286.00	Pegmatite	26671	0.07	135
MO18DD062	286.00	287.00	Pegmatite	26672	0.10	127
MO18DD062	287.00	288.00	Pegmatite	26673	0.10	304
MO18DD062	288.00	289.00	Pegmatite	26674	0.10	85
MO18DD062	289.00	290.00	Pegmatite	26676	1.23	135
MO18DD062	290.00	291.00	Pegmatite	26677	0.43	69
MO18DD062	291.00	292.00	Pegmatite	26678	0.08	243
MO18DD062	292.00	293.00	Pegmatite	26679	0.14	125
MO18DD062	293.00	294.00	Pegmatite	26680	0.06	796
MO18DD062	294.00	295.00	Pegmatite	26681	0.07	318
MO18DD062	295.00	296.00	Pegmatite	26682	0.06	158
MO18DD062	296.00	297.00	Pegmatite	26683	0.05	161
MO18DD062	297.00	298.00	Pegmatite	26684	0.05	467
MO18DD062	298.00	299.00	Pegmatite	26686	0.70	78
MO18DD062	299.00	300.00	Pegmatite	26687	0.20	213
MO18DD062	300.00	301.00	Pegmatite	26688	1.60	155
MO18DD062	301.00	302.00	Pegmatite	26689	1.51	778
MO18DD062	302.00	303.00	Pegmatite	26691	0.40	1570

MO18DD062	303.00	304.00	Pegmatite	26692	0.87	1480
MO18DD062	304.00	305.00	Pegmatite	26693	1.30	750
MO18DD062	305.00	306.00	Pegmatite	26694	0.10	426
MO18DD062	306.00	307.00	Pegmatite	26696	0.10	930
MO18DD062	307.00	308.00	Pegmatite	26697	0.91	585
MO18DD062	308.00	309.00	Pegmatite	26698	1.05	183
MO18DD062	309.00	310.00	Pegmatite	26699	0.26	191
MO18DD062	310.00	311.00	Pegmatite	26700	0.12	218
MO18DD062	311.00	312.00	Pegmatite	26701	0.06	171
MO18DD062	312.00	313.00	Pegmatite	26702	0.05	60
MO18DD062	313.00	314.00	Pegmatite	26703	0.19	152
MO18DD062	314.00	315.00	Pegmatite	26704	0.67	83
MO18DD062	315.00	316.00	Pegmatite	26705	0.08	107
MO18DD062	316.00	317.00	Pegmatite	26706	1.23	128
MO18DD062	317.00	318.00	Pegmatite	26707	2.20	851
MO18DD062	318.00	319.00	Pegmatite	26708	0.19	1080
MO18DD062	319.00	320.00	Pegmatite	26709	0.07	1010
MO18DD062	320.00	321.00	Pegmatite	26711	0.07	650
MO18DD062	321.00	322.00	Pegmatite	26712	0.05	218
MO18DD062	322.00	323.00	Pegmatite	26713	0.09	484
MO18DD062	323.00	324.00	Pegmatite	26714	0.14	1190
MO18DD062	324.00	325.00	Pegmatite	26716	0.27	1020
MO18DD062	325.00	326.00	Pegmatite	26717	0.11	1540
MO18DD062	326.00	327.00	Pegmatite	26718	1.91	522
MO18DD062	327.00	328.00	Pegmatite	26719	0.30	245
MO18DD062	328.00	329.00	Pegmatite	26720	0.08	747
MO18DD062	329.00	330.00	Pegmatite	26721	0.26	928
MO18DD062	330.00	331.00	Pegmatite	26722	0.65	959
MO18DD062	331.00	332.00	Pegmatite	26723	0.38	440
MO18DD062	332.00	333.37	Pegmatite	26724	0.24	883
MO18DD062	333.37	334.00	Mica schist	26726	0.16	135
MO18DD062	334.00	335.00	Mica schist	26727	0.19	64

## JORC TABLE 1

Section 1 Sampling Techniques and Data (Criteria in this section apply to all succeeding sections)	
Criteria	Commentary
<i>Sampling techniques</i>	<ul style="list-style-type: none"> <li>• Diamond drilling, producing drill core has been utilised to sample the pegmatite below ground surface. This method is recognised as providing the highest quality information and samples of the unexposed geology.</li> <li>• Supplementing the drilling data, surface samples were collected from outcrops, utilising channel sampling from trenches and point-source sampling of scattered outcrops.</li> <li>• Drilling and sampling has been carried out in accordance with accepted industry practices within the Manono licence PR13359. The pegmatite has been sampled from the hanging wall contact continuously through to the footwall contact. In addition, the host-rocks extending 2 m from the contacts have also been sampled.</li> <li>• Diamond drilling has been used to obtain core samples which have then been cut longitudinally. Intervals submitted for assay have been determined according to geological boundaries. Samples were taken at 1 m intervals.</li> <li>• The submitted half-core samples typically had a mass of 3 – 5 kg.</li> </ul>
<i>Drilling techniques</i>	<ul style="list-style-type: none"> <li>• The drilling was completed using diamond core rigs with PQ used from surface to sample through to fresh-rock and HQ sized drill rods used after the top-of-fresh-rock had been intersected. Most holes are angled between 50° and 75° and collared from surface into weathered bedrock. All collars were surveyed after completion. All holes were downhole surveyed using a digital multi-shot camera at about 30 m intervals. Apart from drillholes MO17DD001, MO17DD002, MO18DD001 and MO18DD008, all core was oriented.</li> </ul>
<i>Drill sample recovery</i>	<ul style="list-style-type: none"> <li>• Drill core recovery attained &gt;97% in the pegmatite.</li> <li>• Based upon the high recovery, AVZ did not have to implement additional measures to improve sample recovery and the drill core is considered representative and fit for sampling.</li> <li>• For the vast majority of drilling completed, core recovery was near 100% and there is no sample bias due to preferential loss or gain of fine or coarse material.</li> </ul>
<i>Logging</i>	<ul style="list-style-type: none"> <li>• Drill core was logged by qualified geologists using a data-logger and the logs were then uploaded into Geobank which is a part of the Micromine software system. The core was logged for geology and geotechnical properties (RQD &amp; planar orientations). A complete copy of the data is held by an independent consultant.</li> <li>• All core was logged, and logging was by qualitative (lithology) and quantitative (RQD and structural features) methods. All core was also photographed both in dry and wet states, with the photographs stored in the database.</li> <li>• The entirety of all drillholes are logged for geological, mineralogical and geotechnical data.</li> </ul>
<i>Sub-sampling techniques and sample preparation</i>	<ul style="list-style-type: none"> <li>• Core is cut longitudinally, and half-core samples of a nominal 1 m length are submitted for assay.</li> <li>• The current programme uses diamond core drilling.</li> <li>• The sample preparation for drill core samples incorporates standard industry practice. The half-core samples have been prepared at ALS Lubumbashi and the ALS sample preparation facility on site at the Project in Manono, with holes from MO18DD021 onwards being prepared at Manono.</li> <li>• The onsite sample preparation facility the half-core samples of approximately 3-4 kg are oven dried, crushed to -2 mm with a 500 g sub-sample being split out. This 500 g sub-sample is then pulverised to produce a pulp with 85% passing -75µm size fraction. A 120 g subsample is then split</li> </ul>



	<p>from this, the certified reference material, blanks and duplicates are inserted at appropriate intervals and then the complete sample batch is couriered to Australia for assay analysis.</p> <ul style="list-style-type: none"> <li>• Standard sub-sampling procedures are utilised by ALS Lubumbashi and ALS Manono at all stages of sample preparation such that each sub-sample split is representative of the whole it was derived from.</li> <li>• Duplicate sampling was undertaken for the drilling programme. After half-core samples were crushed at the ALS Lubumbashi and currently now at the ALS Manono preparatory facility, an AVZ geologist took a split of the crushed sample which is utilised as a coarse duplicate. The geologist placed the split into a pre-numbered bag which was then inserted into the sample stream. It is then processed further, along with all the other samples. The drilling produced PQ and HQ drill core, providing a representative sample of the pegmatite which is coarse-grained. Sampling was mostly at 1 m intervals, and the submitted half-core samples typically had a mass of 3-4 kg.</li> </ul>
<p><i>Quality of assay data and laboratory tests</i></p>	<ul style="list-style-type: none"> <li>• Diamond drillhole (core) samples were submitted to ALS Lubumbashi and ALS Manono (DRC) where they were crushed and pulverised to produce pulps. These pulps were couriered to Australia and analysed by ALS Laboratories in Perth, Western Australia using a sodium peroxide fusion of a 5g charge followed by digestion of the prill using dilute hydrochloric acid thence determination by AES or MS, i.e. methods ME-ICP89 and ME-MS91. Samples from the drilling completed in 2017 i.e. MO17DD001 and MO17DD002, were assayed for a suite of 24 elements that included Li, Sn, Ta &amp; Nb. Samples from the drilling completed in 2018 were assayed for a suite of 12 elements; Li, Sn, Ta, Nb, Al, Si, K, Fe, Mg, P, Th and U, with Li reported as Li<sub>2</sub>O, Al as Al<sub>2</sub>O<sub>3</sub>, Si as SiO<sub>2</sub>, K as K<sub>2</sub>O, Mg as MgO, Fe as Fe<sub>2</sub>O<sub>3</sub> and P as P<sub>2</sub>O<sub>5</sub>.</li> <li>• Peroxide fusion results in the complete digestion of the sample into a molten flux. As fusion digestions are more aggressive than acid digestion methods, they are suitable for many refractory, difficult-to-dissolve minerals such as chromite, ilmenite, spinel, cassiterite and minerals of the tantalum-tungsten solid solution series. They also provide a more-complete digestion of some silicate mineral species and are considered to provide the most reliable determinations of lithium mineralisation.</li> <li>• Sodium peroxide fusion is a total digest and considered the preferred method of assaying pegmatite samples.</li> <li>• Geophysical instruments were not used in assessing the mineralisation.</li> <li>• For the drilling, AVZ incorporated standard QAQC procedures to monitor the precision, accuracy and general reliability of all assay results from assays of drilling samples. As part of AVZ's sampling protocol, CRMs (standards), blanks and duplicates were inserted into the sampling stream. In addition, the laboratory (ALS Perth) incorporated its own internal QAQC procedures to monitor its assay results prior to release of results to AVZ. The Competent Person is satisfied that the results of the QAQC are acceptable and that the assay data from ALS is suitable for Mineral Resource estimation.</li> </ul>
<p><i>Verification of sampling and assaying</i></p>	<ul style="list-style-type: none"> <li>• MSA observed the mineralisation in the majority of cores on site, although no check assaying was completed by MSA.</li> <li>• MSA observed and photographed several collar positions in the field, along with rigs that were drilling at the time of the site visit.</li> <li>• Twinned holes for the verification of historical drilling, were not required. Short vertical historical holes were drilled within the pit but are neither accessible nor included within the database used to define the Mineral Resource.</li> <li>• Drilling data is stored on site as both hard and soft copy. Drilling data is validated onsite before being sent to data management consultants in Perth where the data is further validated. When results are received they are loaded to the central database in Perth and shared with various stakeholders via the cloud. QC results are reviewed by both independent consultants and AVZ personnel at Manono. Hard copies of assay certificates are stored in AVZ's Perth offices.</li> </ul>

	<ul style="list-style-type: none"> <li>• AVZ has not adjusted assay data.</li> </ul>
<i>Location of data points</i>	<ul style="list-style-type: none"> <li>• The drillhole collars have been located by a registered surveyor using a Hi-Target V30 Trimble differential GPS with an accuracy of +/- 0.02 m.</li> <li>• All holes were downhole surveyed using a digital multi-shot camera at approximately 30 m intervals.</li> <li>• For the purposes of geological modelling and estimation, the drillhole collars were projected onto the topographic surface. In most cases adjustments were within 1 m (in elevation).</li> <li>• Coordinates are relative to WGS 84 UTM Zone 35M.</li> </ul>
<i>Data spacing and distribution</i>	<ul style="list-style-type: none"> <li>• Drillhole spacing was completed on sections 100 m apart, and collars were 50 to 100 m apart on section where possible. In situations of difficult terrain, multiple holes were drilled from a single drill pad using differing angles for each drillhole.</li> </ul>
<i>Orientation of data in relation to geological structure</i>	<ul style="list-style-type: none"> <li>• The drillhole orientation is designed to intersect the Roche Dure Pegmatite at, or nearly at, 90° to the plane of the pegmatite.</li> <li>• No material sampling bias exists due to drilling direction.</li> </ul>
<i>Sample security</i>	<ul style="list-style-type: none"> <li>• When utilizing ALS Lubumbashi, chain of custody is maintained by AVZ personnel on-site to Lubumbashi. Samples are stored on-site until they are delivered by AVZ personnel in sealed bags to the laboratory at ALS in Lubumbashi. The ALS laboratory checked received samples against the sample dispatch form and issues a reconciliation report.</li> <li>• At Lubumbashi, the prepared samples (pulp) are sealed in a box and delivered by DHL to ALS Perth.</li> <li>• ALS issue a reconciliation of each sample batch, on actual samples received vs documented dispatch.</li> <li>• The ALS Manono site preparation facility is managed independently by ALS who supervise the sample preparation. Prepared samples are sealed in boxes and transported by air to ALS Lubumbashi and are accompanied by an AVZ employee, where export documentation and formalities are concluded. DHL couriers the samples to ALS in Perth.</li> </ul>
<i>Audits or reviews</i>	<ul style="list-style-type: none"> <li>• The sampling techniques were reviewed by the Competent Person during the site visit.</li> <li>• The Competent Person considers that the exploration work conducted by AVZ was carried out using appropriate techniques for the style of mineralisation at Roche Dure, and that the resulting database is suitable for Mineral Resource estimation.</li> </ul>

## Section 2 Reporting of Exploration Results

(Criteria listed in the previous section also apply to this section.)

Criteria	Commentary
<i>Mineral tenement and land tenure status</i>	<ul style="list-style-type: none"> <li>• The Manono licence was awarded as Research Permit PR13359, issued on the 28<sup>th</sup> December 2016 to o La Congolaise d’Exploitation Miniere SA (Cominiere). It is valid for 5 years. On the 2<sup>nd</sup> February 2017, AVZ formed a joint-venture (JV) with Cominiere and Dathomir Mining Resources SARL (Dathomir) to become the majority partner in a JV aiming to explore and develop the pegmatites contained within PR 13359. Ownership of the Manono Lithium Project is AVZ 60%, Cominiere 30% and Dathomir 10%.</li> <li>• AVZ manages the project and meets all funding requirements.</li> <li>• All indigenous title is cleared and there are no other known historical or environmentally sensitive areas.</li> </ul>
<i>Exploration done by other parties</i>	<ul style="list-style-type: none"> <li>• Within PR13359 exploration of relevance was undertaken by Geomines whom completed a programme of drilling between 1949 and 1951. The drilling consisted of 42 vertical holes drilled to a general depth of around 50 - 60 m. Drilling was carried out on 12 sections at irregular intervals ranging from 50 - 300 m, and over a strike length of some 1,100 m. Drill spacing on the sections varied from 50 - 100 m. The drilling occurred in the Roche Dure Pit only, targeting the fresh pegmatite in the Kitotolo sector of the project area.</li> <li>• The licence area has been previously mined for tin and tantalum through a series of open pits over a total length of approximately 10 km excavated by Zairetain SPRL. More than 60 Mt of material was mined from three major pits and several subsidiary pits focused on the weathered upper portions of the pegmatites. Ore was crushed and then upgraded through gravity separation to produce a concentrate of a reported 72% Sn. There are no reliable records available of tantalum or lithium recovery as tin was the primary mineral being recovered.</li> <li>• Apart from the mining excavations and the drilling programme, there has been very limited exploration work within the Manono region.</li> </ul>
<i>Geology</i>	<ul style="list-style-type: none"> <li>• The Project lies within the mid-Proterozoic Kibaran Belt - an intracratonic domain, stretching for over 1,000 km through Katanga and into southwest Uganda. The belt strikes predominantly SW-NE and is truncated by the N-S to NNW-SSE trending Western Rift system. The Kibaran Belt is comprised of a sedimentary and volcanic sequence that has been folded, metamorphosed and intruded by at least three separate phases of granite. The latest granite phase (900 to 950 million years ago) is assigned to the Katangan cycle and is associated with widespread vein and pegmatite mineralisation containing tin, tungsten, tantalum, niobium, lithium and beryllium. Deposits of this type occur as clusters and are widespread throughout the Kibaran terrain. In the DRC, the Katanga Tin Belt stretches over 500 km from near Kolwezi in the southwest to Kalemie in the northeast comprising numerous occurrences and deposits of which the Manono deposit is the largest. The geology of the Manono area is poorly documented and no reliable maps of local geology were observed. Recent mapping by AVZ has augmented the overview provided by Bassot and Morio (1989) and has led to the following description. The Manono Project pegmatites are hosted by a series of mica schists and by amphibolite in some locations. These host rocks have a steeply dipping penetrative foliation that appears to be parallel to bedding. There are numerous bodies of pegmatite, the largest of which have sub-horizontal to moderate dips, with dip direction being towards the southeast. The pegmatites post-date metamorphism, with all primary igneous textures intact. They cross-cut the host rocks but despite their large size, the contact</li> </ul>

	<p>deformation and metasomatism of the host rocks by the intrusion of the pegmatites seems minor. The absence of significant deformation of the schistosity of the host rocks implies that the pegmatites intruded brittle rocks. The pegmatites constitute a pegmatite swarm in which the largest pegmatites have an apparent en-echelon arrangement in a linear zone more than 12 km long. The pegmatites are exposed in two areas; Manono in the northeast, and Kitotolo in the southwest. These areas are separated by a 2.5 km section of alluvium-filled floodplain which contains Lake Lukushi. At least one large pegmatite extends beneath the floodplain. The pegmatites are members of the LCT-Rare Element group of pegmatites and within the pegmatite swarm there are LCT albite-spodumene pegmatites and LCT Complex (spodumene sub-type) pegmatites.</p>
<i>Drill hole Information</i>	<ul style="list-style-type: none"> <li>• See table for collar, survey and assay data.</li> </ul>
<i>Data aggregation methods</i>	<ul style="list-style-type: none"> <li>• Intersections are reported as length-weighted grades within the logged pegmatite.</li> <li>• No grade truncations were applied.</li> <li>• The majority of samples were taken at 1 m lengths.</li> <li>• No equivalent values are used or reported.</li> </ul>
<i>Relationship between mineralisation widths and intercept lengths</i>	<ul style="list-style-type: none"> <li>• The majority of samples were taken at 1 m lengths.</li> <li>• There is no relationship between mineralisation width and grade.</li> <li>• The geometry of the mineralisation is reasonably well understood however the pegmatite is not of uniform thickness nor orientation. Consequently, most drilling intersections do not represent the exact true thickness of the intersected pegmatite, although intersections are reasonably close to true thickness in most cases.</li> </ul>
<i>Diagrams</i>	<ul style="list-style-type: none"> <li>• The relevant plans and sections are included in this document.</li> </ul>
<i>Balanced reporting</i>	<ul style="list-style-type: none"> <li>• All pegmatite intersections for holes MO18DD056, 57, 58, 59, 60, 61 and 62 are reported.</li> </ul>
<i>Other substantive exploration data</i>	<ul style="list-style-type: none"> <li>• No other exploration data is available.</li> </ul>
<i>Further work</i>	<ul style="list-style-type: none"> <li>• Diamond drill testing of the identified priority targets will be on-going.</li> <li>• Drilling of 5 metallurgical test work drill holes has commenced.</li> </ul>