

Barringgi Gadyin –
The Wimmera River
and *Wotjobaluk*
Connection to Country

Darren Griffin
and
Ben Muir



- BGLC's Mission Statement - Traditional Owners working together as Custodians of Culture, Country, Heritage, Lore and Language
- *Barengi Gadyin* is the *Wergaia* name for the entire Wimmera River. *Barengi* = Track (of), *Gadyin* = Water
- Land and Water is fundamental to the cultural heritage and wellbeing of Aboriginal people. It is the core of all spirituality and this relationship and the spirit of 'Country' is what needs to be protected and celebrated
- Traditional Owners (TOs) have a cultural, ethical and legal responsibility to manage their cultural heritage on their Country

- Represents Traditional Owners from the *Wotjobaluk, Jaadwa, Jadawadjali, Wergaia* and *Yupagulk* family groups, who were recognised in the 2005 Native Title Consent Determination, the first in south-eastern Australia.
- Is the Prescribed Body Corporate for the *Wotjobaluk* claim area, as outlined in the Commonwealth *Native Title Act 1993*, giving it legal authority and obligation to work on behalf of Traditional Owners.
- Is a registered Aboriginal Corporation under the CAATSI Act.
- Is the Registered Aboriginal Party (RAP) for the *Wotjobaluk* claim area, as decided by the Victorian Government, in line with the *Aboriginal Heritage Act (AHA) 2006*.



Registered Aboriginal Parties in Victoria

BARENGI GADJIN

Registered places - 2746
CHMPs - 52

YORTA YORTA

Registered places - 2862
CHMPs - 218

DJA DJA WURRUNG

Registered places - 1888
CHMPs - 180

TAUNGURUNG

Registered places - 1198
CHMPs - 128

GUNDITJ MIRRORING

Registered places - 1784
CHMPs - 44

MARTANG

Registered places - 1105
CHMPs - 38

WATHAURUNG

Registered places - 3912
CHMPs - 520

WURUNDJERI

Registered places - 3267
CHMPs - 808

GUNAIKURNAI

Registered places - 2858
CHMPs - 194

EASTERN MAAR*

Registered places - 150
CHMPs - 3

BUNURONG

Registered places - 2168
CHMPs - 835

*Eastern Maar Aboriginal Corporation and
Gunditj Mirring Traditional Owners
Aboriginal Corporation have
both been appointed over this area

- BGLC has a membership of c.250 Traditional Owners, all of whom have proven their ancestral links to one of 7 Apical Ancestors registered in the Native Title Consent Determination:



- Richard Kennedy born 1853 at Morton Plains
- Captain Harrison senior born 1838 at Donald
- Archibald Pepper born 1859 at Nypo station
- Thomas Marks born 1844 at Lake Hindmarsh
- Pelham Cameron born 1854 at Morton Plains
- Albert Coombes born 1852 at Antwerp
- Augusta Robinson born 1855 at Richardson River

Australian Aboriginal Archaeology

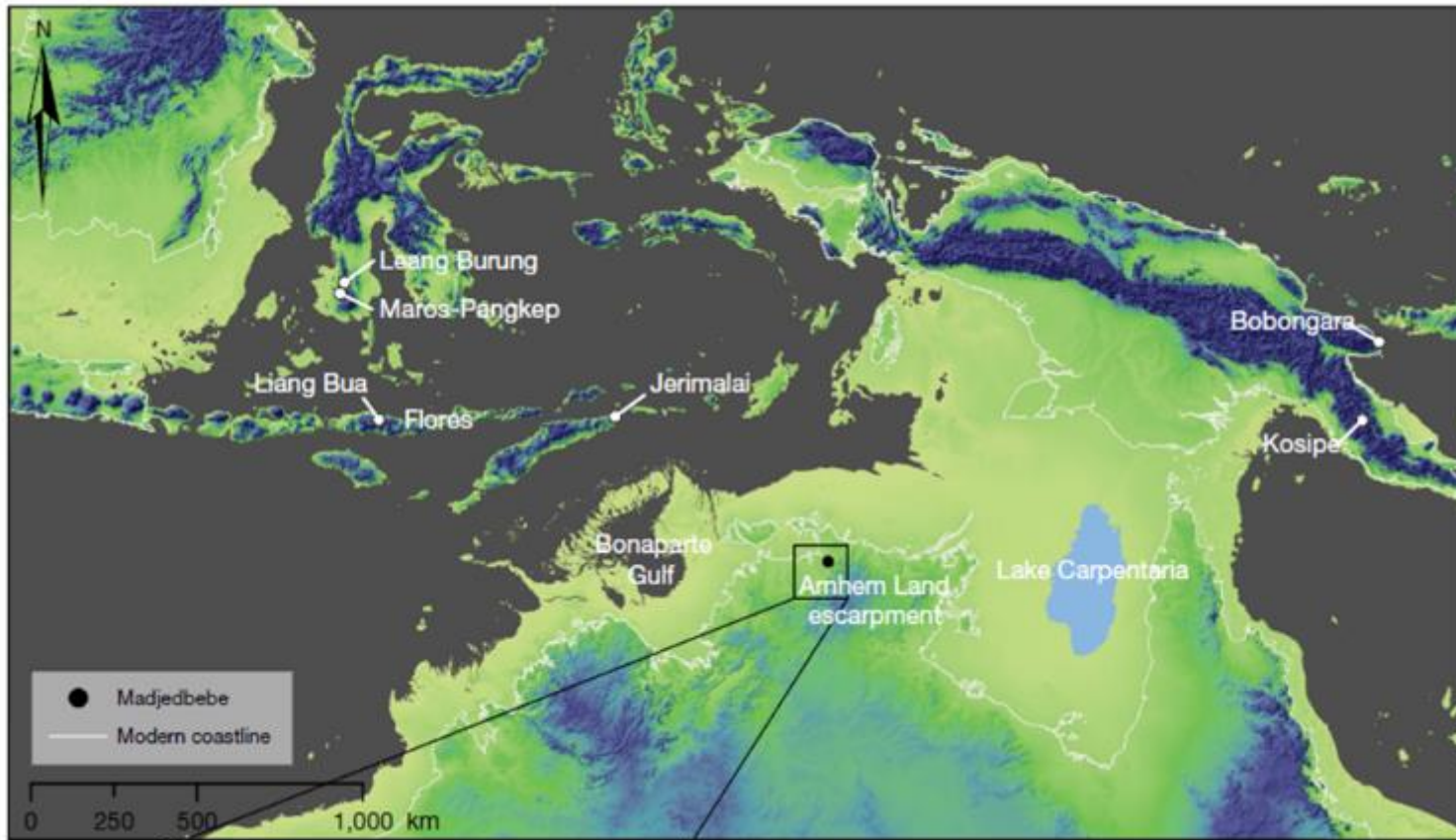
- Recent archaeological excavations at Madjedbebe Rockshelter in Kakadu, near Jabiru in the Northern Territory
- Aboriginal people were living in this region at least 65,000 years BP.



Australian Aboriginal Archaeology



**Barengi
Gadjin**
LAND COUNCIL
ABORIGINAL CORPORATION INC. T.C.



Madjedbebe site location in relation to the coastland at 65ka and current coastline (white line)

Aboriginal Archaeology in this region



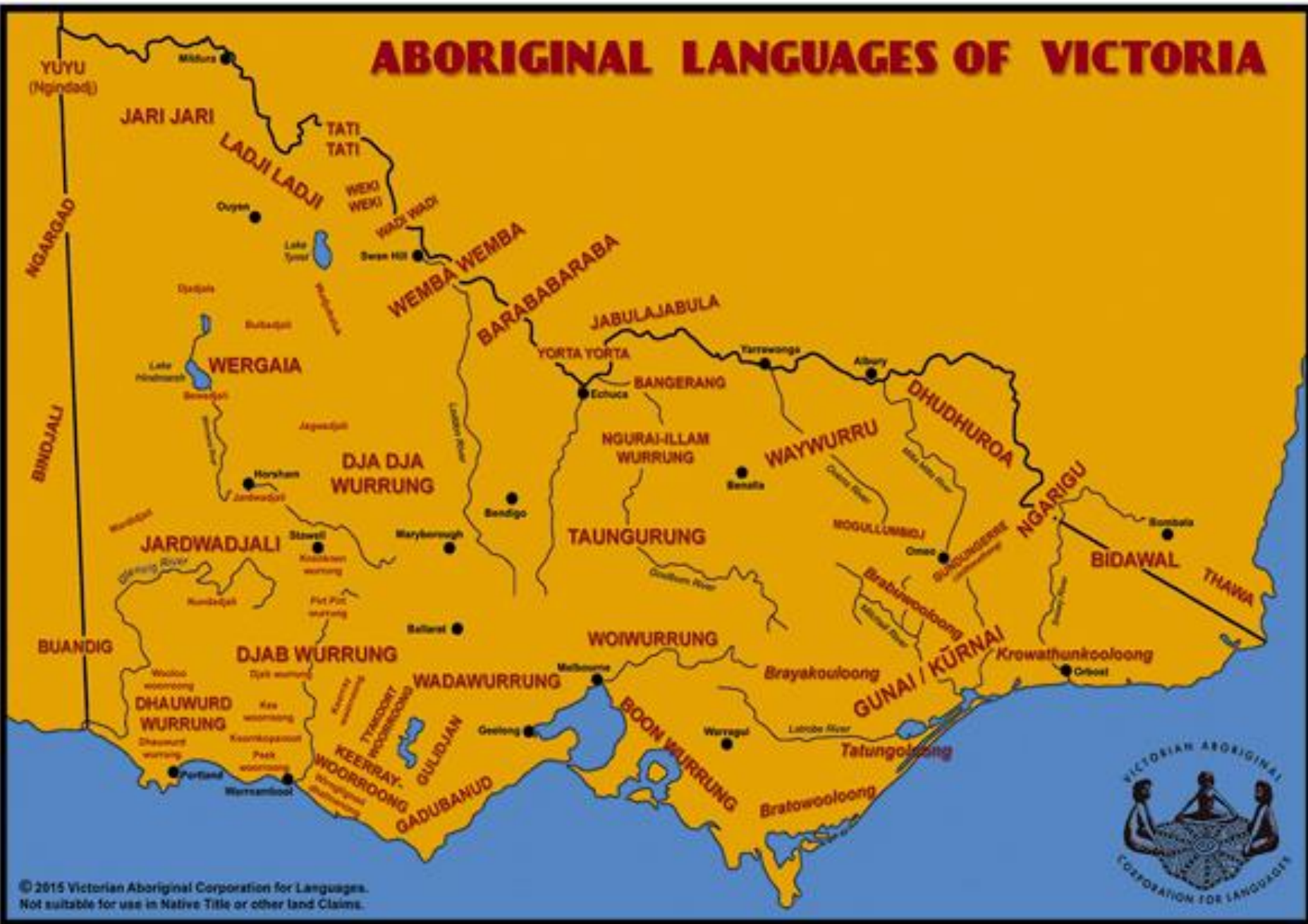
- Aboriginal people arrived here c.50,000 – 30,000 years ago
- Climate was warmer and wetter than today
- c. 25,000 – 10,000 years ago – Ice Age (cold and arid)
- C.18,000 – Last Glacial Maximum (LGM)
- Earliest archaeological date in the Grampians c. 22,000 BP

Aboriginal Archaeology in this region



- c. 6,000 years ago – climate and sea levels stabilise to current levels
- Complex Hunter Gatherer Society -
- Intensification, semi-sedentary, agriculture, aquaculture, mounds, increased population, complex kinship system

ABORIGINAL LANGUAGES OF VICTORIA



First Contact

- Sealers and Whalers operating along Southern Coast and Bass Strait c.1780s – 1830s
- Exploration - Lt James Grant's survey of the Victorian coast, 1800
- Hume and Hovell exploration from Sydney to Port Phillip Bay, 1824/1825
Charles Sturt, Murray River, 1830
- Major Mitchell exploration from Sydney to Murray River Mouth, 1836 – first European to pass through this region – named Wimmera River, Grampians etc..



Invasion and Resistance

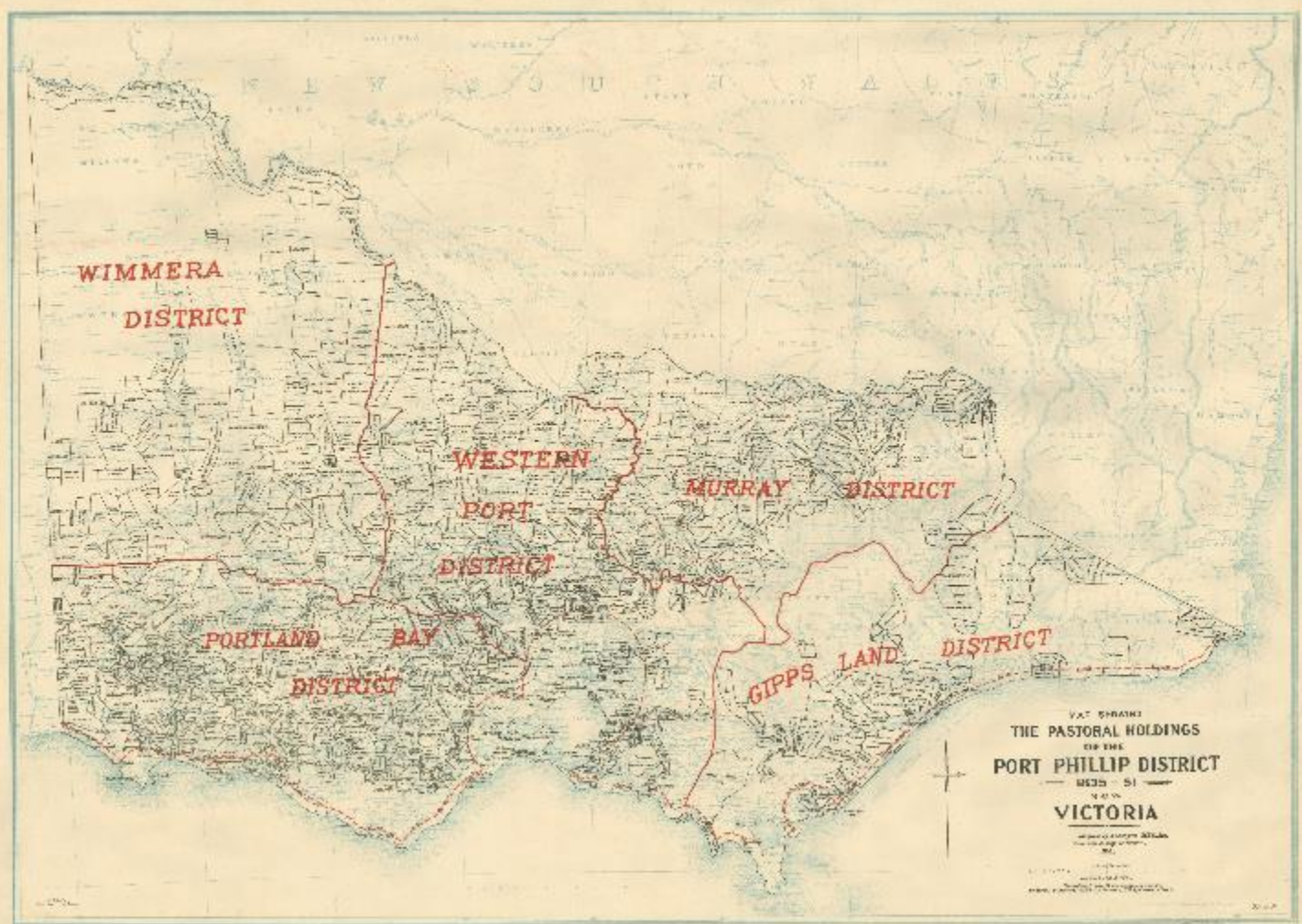
- Henty Brothers established permanent settlement in Portland in 1834
- John Batman and other pastoralists from Van Diemen's Land arrived in Port Phillip in 1835 'Overstraighters'
- Edward John Eyre, Port Phillip to Adelaide, 1838 'Overlanders'



Invasion and Resistance

- 'Batman's Treaty' - 6 June 1835, Merri Creek
- Sovereignty, Treaty, Terra Nullius
- Squatters – illegal occupation of land





WIMMERA
DISTRICT

WESTERN
PORT
DISTRICT

MURRAY DISTRICT

PORTLAND BAY
DISTRICT

GIPPS LAND
DISTRICT

VAT SPRING
THE PASTORAL HOLDINGS
OF THE
PORT PHILLIP DISTRICT
1835-51
IN
VICTORIA

11035

Government responses to dispossession

- Port Phillip Protectorate (1839 – 1849) was established on the recommendation of the British Select Committee on Aborigines (1837)
- George Augustus Robinson was appointed the position of Chief Protector of Aborigines
- Assistant Protectors: James Dredge, William Thomas, Edward Stone Parker and Charles Sievwright



RESISTANCE FIGHTERS



Left: 'The Avengers', S.T. Gill's depiction of night time punitive raid on Aboriginal camp, c.1869 (Source: National Gallery of Victoria)



Sketch of battle between group of Aboriginal men and mounted squatters and their party, unknown artist, n.d.

Invasion and Resistance

- First official execution in Victoria and first people hanged at the Old Melbourne Goal – the two Tasmanian Aboriginal men, Tunnerminnerwait (aka Timmy) and Maulboyheener (aka Jack) on 20 January 1842



Timmy, Native of the Eastern Coast



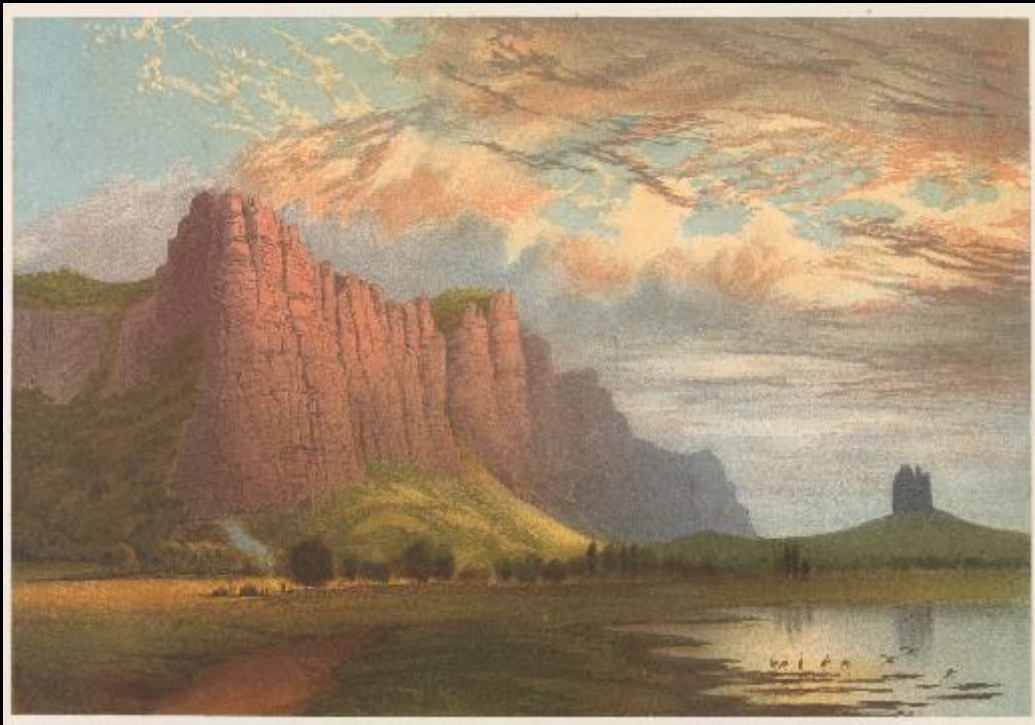
Jack, Native of Cape Grim.

Resistance Fighters

- ‘From April 23 1838 to Dec 31 1849, 57 Aborigines were arrested for various offences, including murder, sheep stealing and spearing cattle. Only 32 were placed on trial, 23 were found guilty, 5 were executed, 13 were transported, and 6 were imprisoned’ (The Argus 14 January 1933:3).



THE CASE OF YANEM GOONA



Left: Mount Arapiles at sunset by N. Chevalier, 1864 (Source: State Library of Victoria)



THE CASE OF YAN-EM GOONA CONT.

'Old Billy Yanengoneh (spring from the earth) is at Norfolk Island. This black was seen at Norfolk Island, and whenever he mentioned the Grampians invariably cried at the thought of home'

Extract of letter from David Rose (Wimmera squatter) to Governor La Trobe, 1853

Mission and Reserves

- As a result of the effects of the violence, dispossession and disease on the Aboriginal population from the pastoral invasion and gold rush, the Victorian Select Committee of the Legislative Council on the Aborigines was established in 1859
- Main recommendation was that areas should be established where Aboriginal people could be moved to and protected - segregation policy
- These 'Aboriginal Reserves' would best be managed by Christian religious groups, where Aboriginal people could be 'civilised' and 'Christianised'



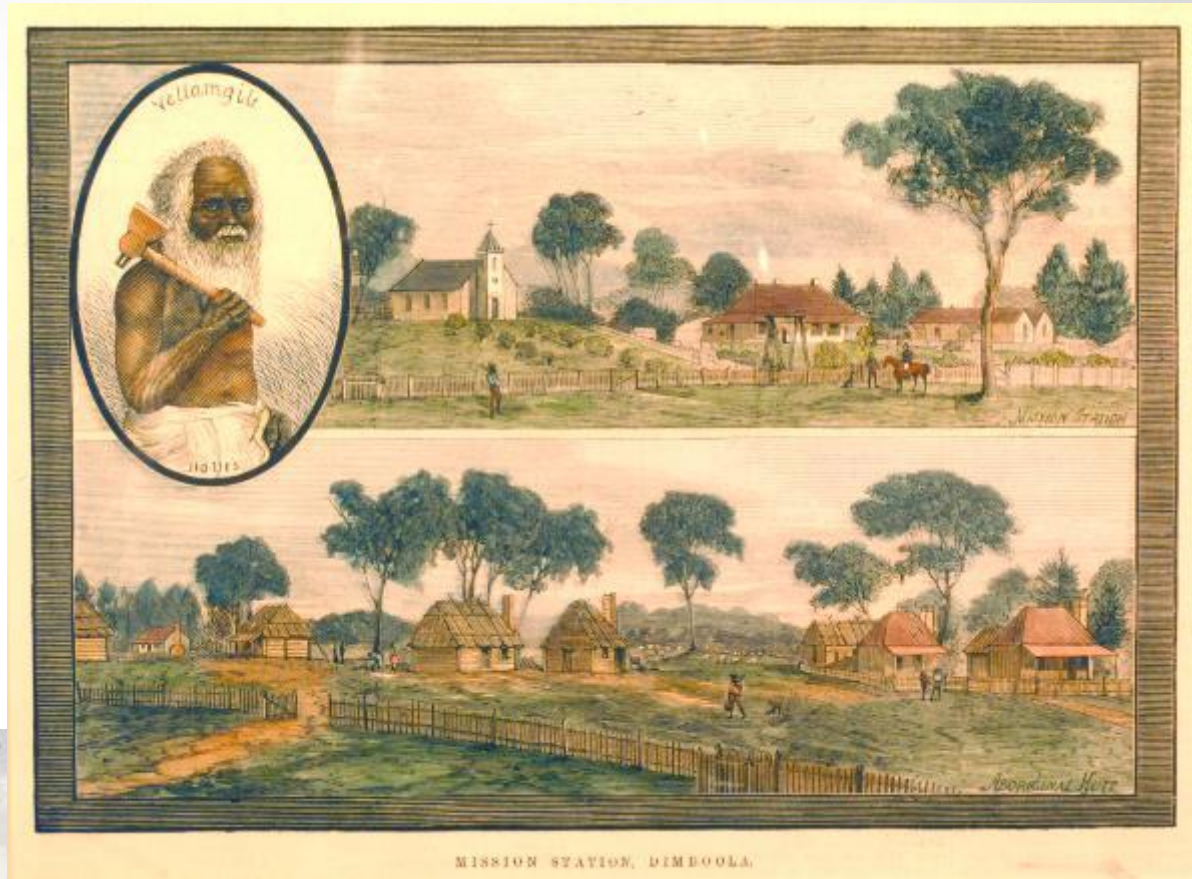
Ebenezer Mission 1859 - 1904

- Established at a traditional Wotjobaluk ceremony and meeting place on the Wimmera River
- By Moravian Missionaries who were involved in the 'Aboriginal Reserve' at Lake Boga
- Read the Willy Wimmera (Jim Crow) Story in London before heading to Victoria



Moravian Church, Dimboola,
1885 - by Samuel Roberts,
1865-1886, artist.

"The new limestone church
consecrated on 1 January
1875 and the foundation
stone laid by the Reverend
Horatio C. Ellerman."



Mission Station, Dimboola. Wood
engraving. Illustrated
Australian News, 22 March
1882.

IAN22/03/82/36. La Trobe Picture
Collection



*Bob was called 'Big Bob' 'Murdering Bob', 'Morton Plains Bobby' or 'King Robert of Morton Plains' by the Europeans. He was leader/
spokesperson of the Bulugdja (Djubagalg gundidj) clan of the Wergaia language group (Wotjobaluk dialect) from 1883 to 1896.

Residents in front of church at Ebenezer Mission Station, 1892 (Source: State Library of Victoria)

Back Row (L-R): Mrs Jacoby, Mr Bogish, Mrs Bogish, Mrs Cameron, Mrs Fenton with baby, Henry Fenton, Mrs Coombes with baby, Teddy Fenton, Bob*, Teddy Droyer, Fisher Marks, Charlie Napier, Pelham Cameron, Archie Pepper, Bob Harrison.

In front of Mrs Jacoby (L-R): Tony, Lena, Hugh, Valerie Bogish

Seated front (L-R): Archie Cameron with child, Jack Lane, Murray Kennedy, Sarah Kennedy, unknown, unknown, Dick Kennedy with Everaad, Clara Cameron, Lily Kennedy, Albert Coombes, Jacob Coombes, Ella Kinnear, Mrs Peper, baby George in pram, Nellie Pepper, Tommy Fenton (sitting).



**Barengi
Gadjin**
LAND COUNCIL
ABORIGINAL CORPORATION RNTCC



Victorian Government Legislation

- Aborigines Protection Act 1869
- Established the Board for the Protection of Aborigines (BPA)
- The Act was updated in 1886, and this became known as the 'Half-Caste Act'
- These Acts gave powers to the BPA which gave them an extraordinary level of control of people's lives including regulation of residence, employment, marriage, social life and other aspects of daily life.
- The policy of excluding so-called 'half-castes' assumed that numbers of Aboriginal people on the reserves would decline, so that reserves could be reduced and eventually closed down.
- Policy of assimilation



Fringe Camps

- From 1886 residents of Ebenezer Mission who were determined to be 'Half-Castes' established a settlement on Crown Land next to Antwerp Cemetery, on the fringes of town.
- After Ebenezer Mission closed in 1904 more people moved to this fringe camp
- Some people moved to the Coranderk and Lake Tyers missions
- Wotjobaluk people lived at the Antwerp fringe camp until the 1980s – 'The Block'



Land Rights

- Native Title Act 1993(Comm)
- Continuous occupation and practice of traditional 'lores' (laws) and customs over Crown Land
- The Wotjobaluk, Jadawadjali, Wergaia, Jaadwa and Jupagulk Peoples No. 1 was the first successful Native Title consent determination in south-eastern Australia on 13 December 2005
- Federal Court recognised their non-exclusive native title rights over approximately 153km length of the Wimmera River, as well as freehold title to three parcels of land.



Land Rights

- While making the Native Title determination, Justice Merkel also acknowledged the ‘severe and extensive dispossession, degradation and devastation’ Aboriginal people in the Wimmera had suffered due to the 19th century declaration of British sovereignty over their land and waters (2005 FCA 1795).

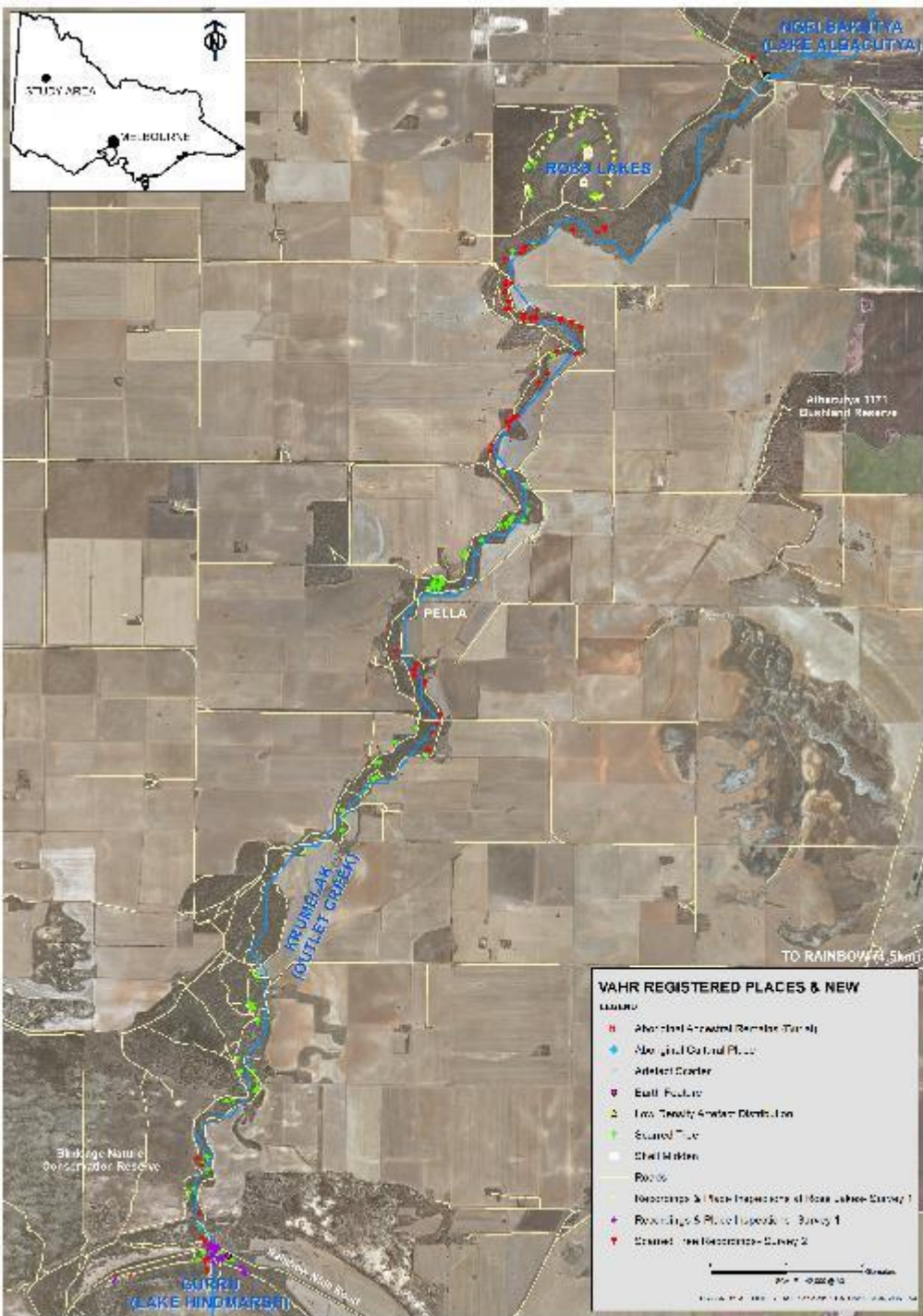


- Lower Wimmera River Aboriginal Water Project – activities supported by Wimmera Catchment Management Authority (WCMA) and Barengi Gadjin Land Council (BGLC) through funding from the Australian Government’s National Landcare Programme and DELWP.
- Includes Archaeological Survey and Cultural Values Recording of the Lower Wimmera River



- Targeted Archaeological Survey along *Krumelak* (Outlet Creek) from *Gurru* (Lake Hindmarsh) to *Ngelbakutya* (Lake Albacutya)





- A large number and diverse range of Scarred Trees, many in excellent condition
- 120 Scarred Trees recorded during the survey (13 of these already on the VAHR)
- The majority were on Black Box or Grey Box trees almost equally with a small number on Red Gums
- Every type of Scarred Tree represented



Canoe Scars



Allen, H. (2010). Australia: William Blandowski's illustrated encyclopaedia of Aboriginal Australia. Canberra: Aboriginal Studies Press
Bark removal (Plate 34)



Night fishing / S. T. Gill. The Australian Sketchbook, Melbourne, Victoria : Hamel & Ferguson, c.1864. 1 print : colour lithograph on white paper ; 17.7 x 25.3 cm. on sheet 25.4 x 31.3 cm.





**Barengi
Gadjin**
LAND COUNCIL
ABORIGINAL CORPORATION RNTBC



Photographs of Wotjobaluk man Alf Bull in bark canoes he had constructed. Taken along the Wimmera River around Dimboola in the 1920s/30s (Photos: Courtesy of Dimboola and District Historical Society)



Wotjobaluk men, Alf Marks and Pelham Cameron on bark canoes they had constructed and raced at the Dimboola Rowing Regatta in 1922 (Photo courtesy of Dimboola and District Historical Society)

Axe Marks

Stone, Steel and Combination (steel axe marks at the top and stone at the bottom)



Daintree, Richard, 1832-1878 & Fauchery, Antoine 1823-1861 photographers
Aboriginal camp [c.1858]

Copyright - Reproduction Rights owned by the State Library of Victoria

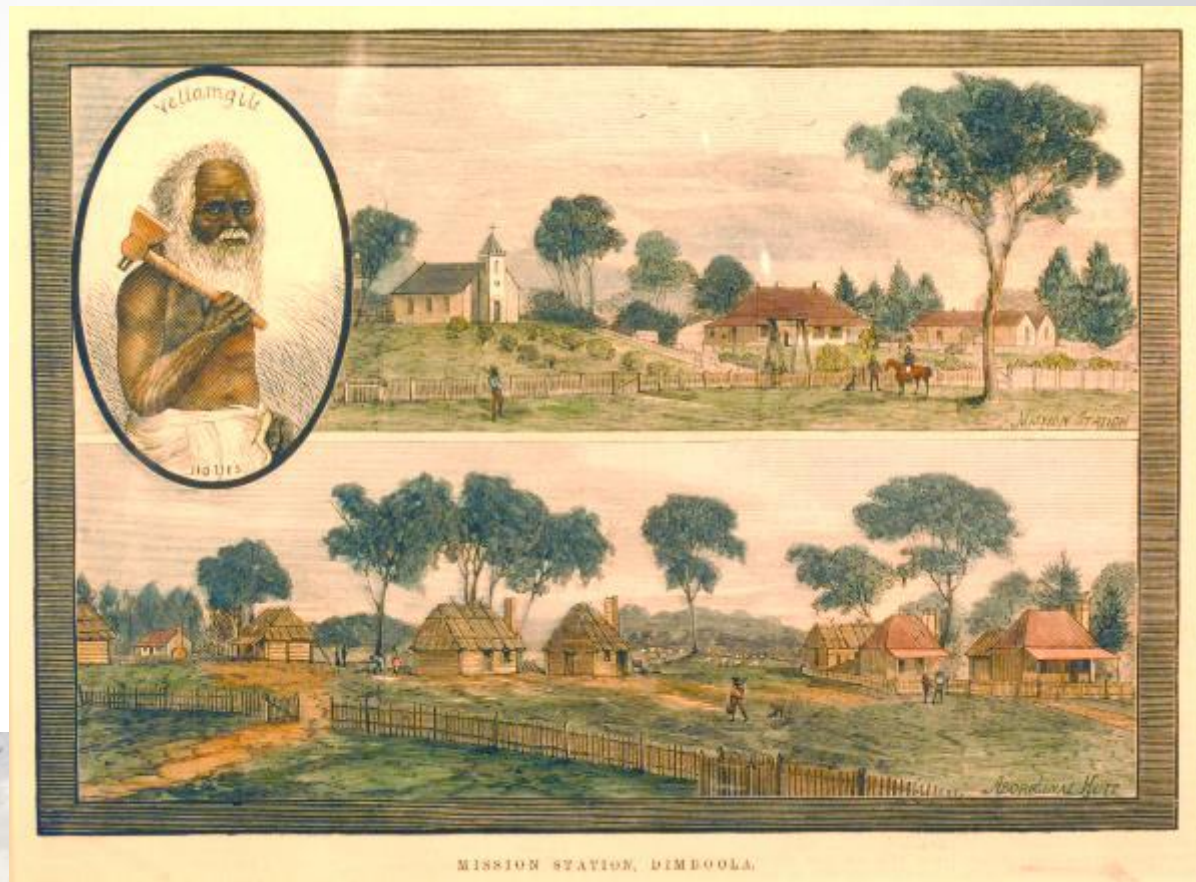




Drawing of an Aboriginal Village' in south-western Victoria
(Source: Critchett 1984:15)

Moravian Church, Dimboola,
1885 - by Samuel Roberts,
1865-1886, artist.

"The new limestone church
consecrated on 1 January
1875 and the foundation
stone laid by the Reverend
Horatio C. Ellerman."

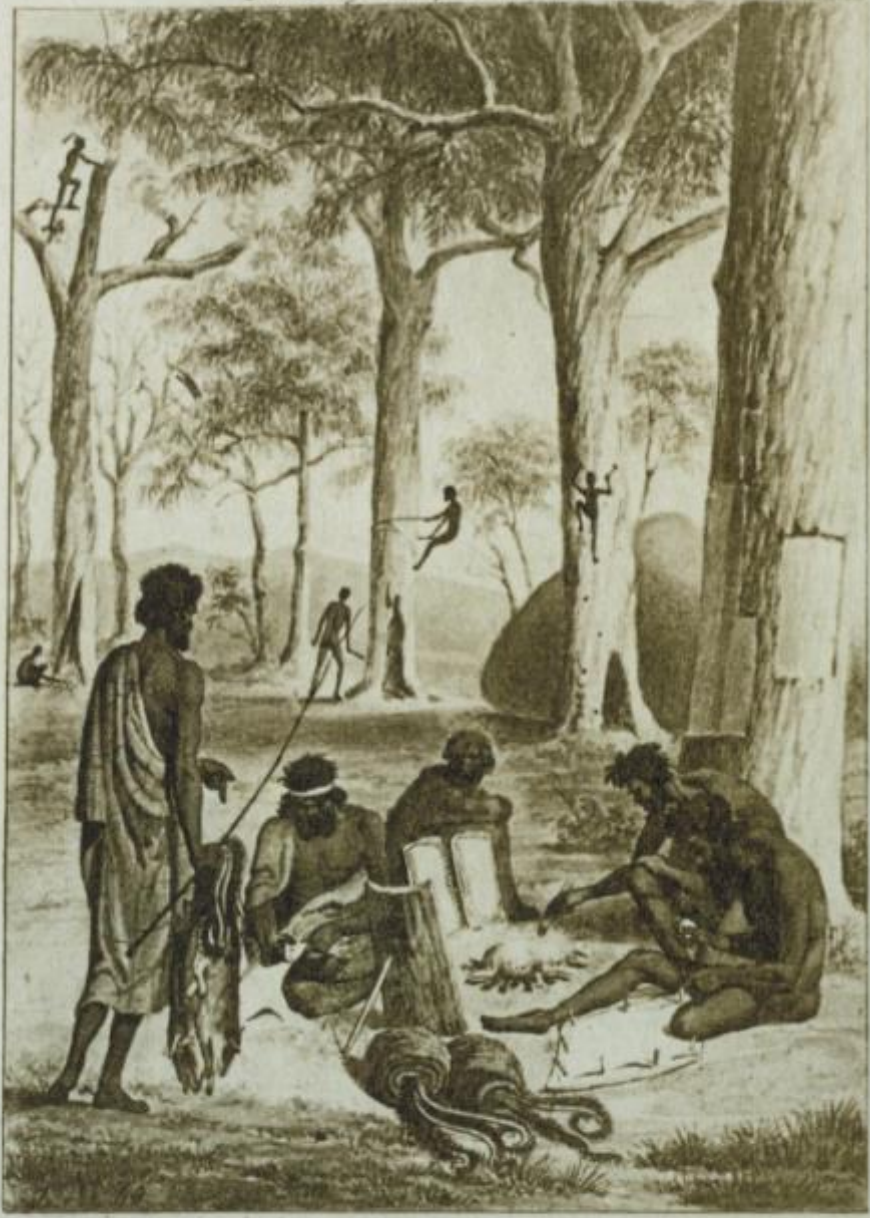


Mission Station, Dimboola. Wood
engraving. Illustrated
Australian News, 22 March
1882.

IAN22/03/82/36. La Trobe Picture
Collection



- Possum Skin Stretching and Curing Boards
(Bunya Boards)



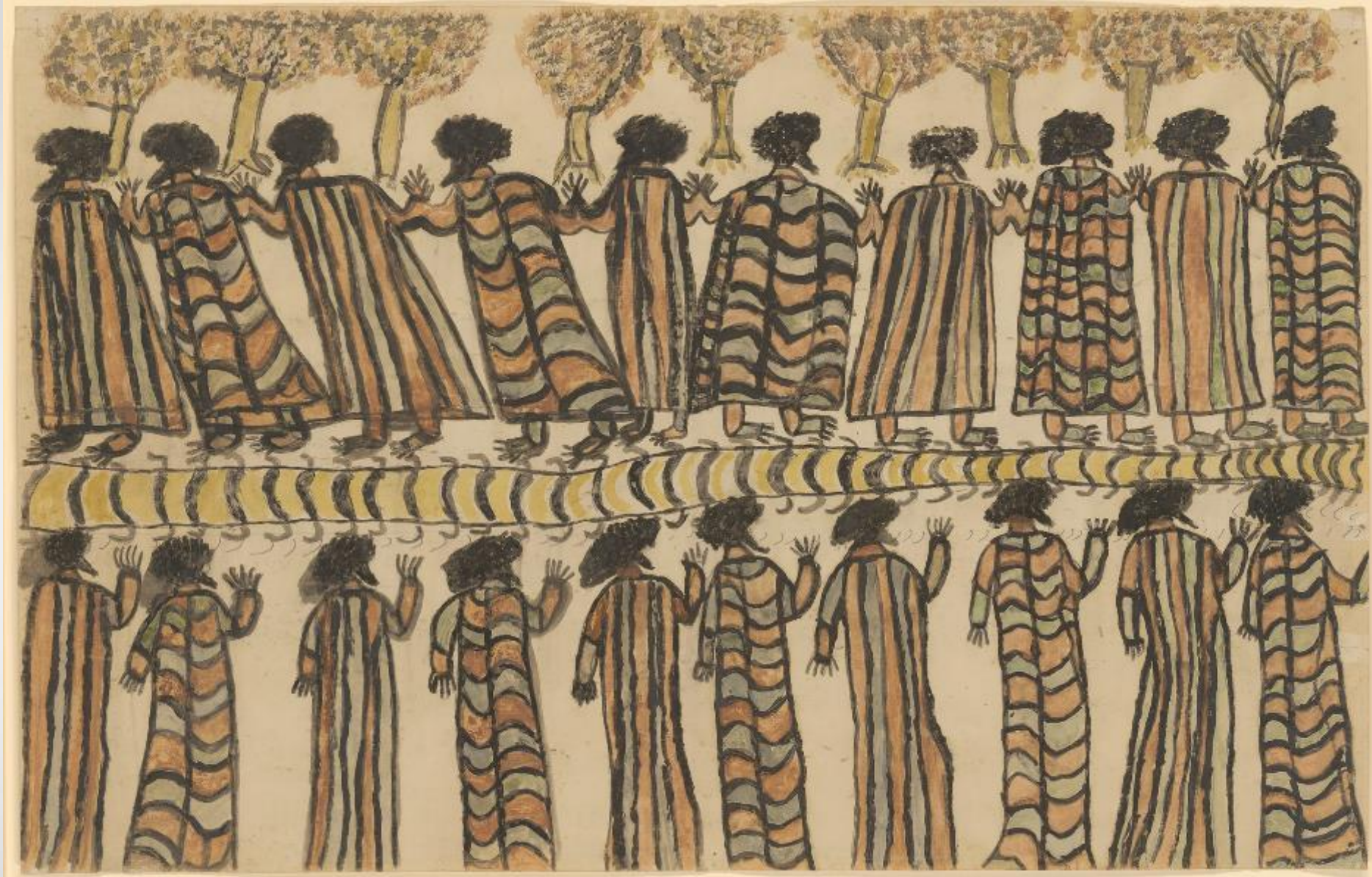
Allen, H. (2010). Australia: William Blandowski's illustrated encyclopaedia of Aboriginal Australia. Canberra: Aboriginal Studies Press (Plate 64)

Aborigines domestic life of the natives



Daintree, Richard, 1832-1878 & Fauchery, Antoine 1823-1861 photographers
Group of Aborigines, sitting and standing, whole-length, full face, wearing
animal skins, some holding weapons [c.1858]

Copyright - Reproduction Rights owned by the State Library of Victoria



William Barak, Wurundjeri c.1824–1903 Figures in possum skin cloaks 1898
Copyright - National Gallery of Victoria, Melbourne

- Boomerang Scar



- Carved Tree



Barengi Gadjin Land Council Aboriginal Corporation
and
Maurizio Campanelli (La Trobe University) present:



Bakang Dyakata

2nd Annual Traditional Aboriginal Earth Oven Recreation Event
Friday – Sunday, 18th - 20th November 2016
Haven on the banks of the Wimmera River in Horsham (end of
Pearsons Road, South Bank)

For more info see the flyer or contact Darren Griffin – ch@bglc.com.au



Earthen Mounds

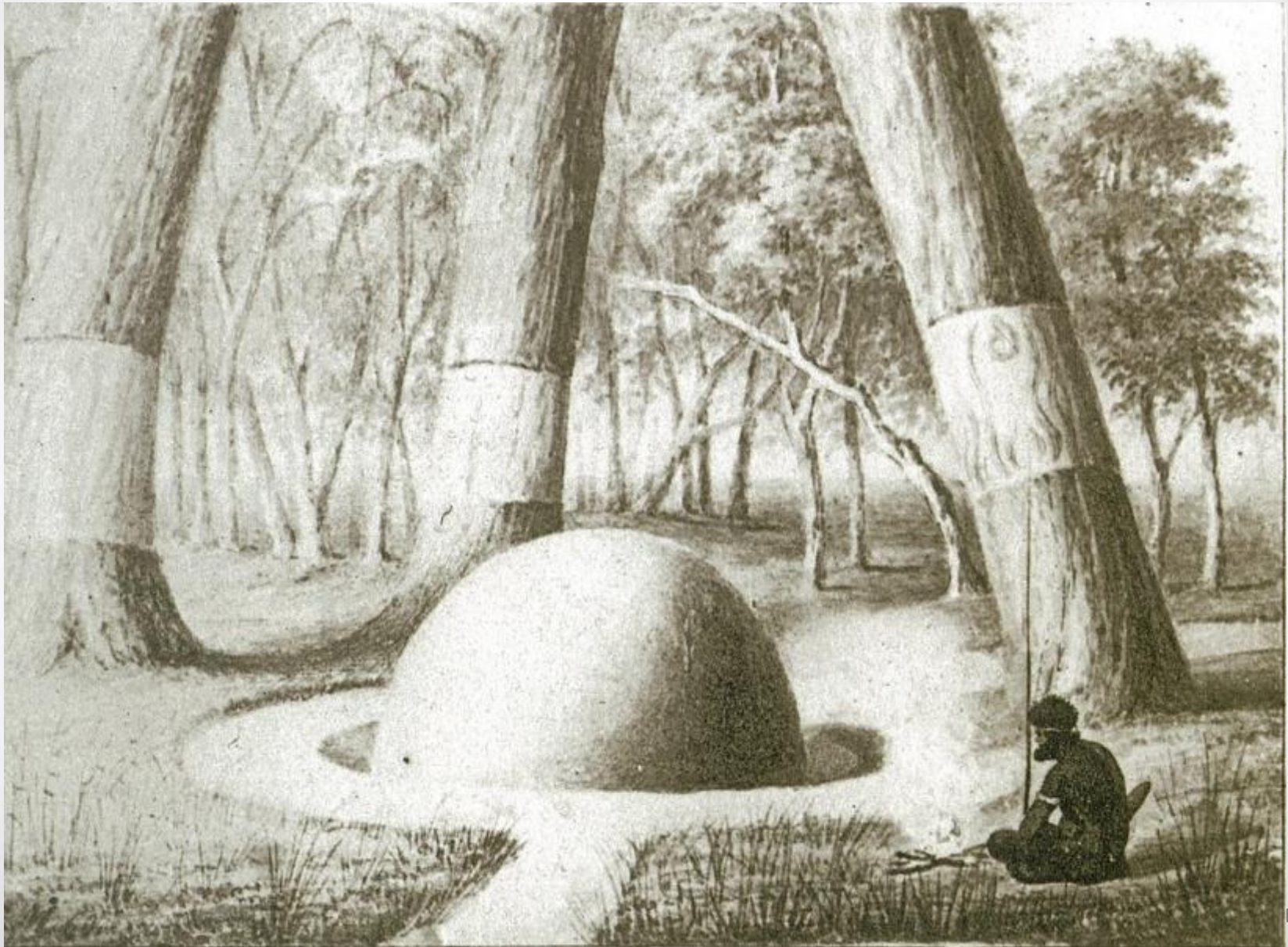
- One of the indicators of Intensification here in Australia is the increase in the use of mounds
- Large mounds in wetland areas to provide habitation centres
- Gardens beds for cultivated plants
- Burials (small groups and individuals)
- Repeated use and accumulation of earth ovens





• Sunbury Burial Mound, Emu Creek, 2010 •

Allen, H. (2010). Australia: William Blandowski's illustrated encyclopaedia of
Aboriginal Australia. Canberra: Aboriginal Studies Press.
Burial place near Budda (Plate 188)



Allen, H. (2010). Australia: William Blandowski's illustrated encyclopaedia of
Aboriginal Australia. Canberra: Aboriginal Studies Press.
Roasting a Kangaroo (Plate 182)



Allen, H. (2010). Australia: William Blandowski's illustrated encyclopaedia of Aboriginal Australia. Canberra: Aboriginal Studies Press.

Oven Mounds (Plate 183)





Godfrey, H. (1841-1864). Sketchbook of drawings by Henry Godfrey, with views in England, Tasmania and Victoria [artwork]. La Trobe Picture Collection, State Library of Victoria. Women gathering Murnong and other food, November 1, 1843.



Barengi Gadjin staff recreate Aboriginal earth oven

By CARLY WERNER
Oct. 23, 2016, 3:28 p.m.

[Facebook](#) [Twitter](#) [Google+](#) [LinkedIn](#)



UNEARTHED: Abby Cooper, Darren Griffin, Maurizio Campanelli, Tracey Rigney and Daniel Clarke recreate an earth oven in Horsham. Picture: SAMANTHA CAMARRI

"Different recollections": Julie Bishop declines to respond to Tony Abbott's claims

"This is not new money": Turnbull government accused of repackaging climate aid gift

Arrest warrant issued for comedian Greg Fleet after court no-show

NAPLAN 2015: Literacy, numeracy skills stagnating, focus needed on teen reading

EDITOR'S PICKS

POPULAR



**Barengi
Gadjin**
LAND COUNCIL
ABORIGINAL CORPORATION ENTCC



**Barengi
Gadjin**
LAND COUNCIL
ABORIGINAL CORPORATION NT/TC







Toolondo

Wonwondoo

Telangatak East-Rocklands Rd

Toolondo Golf Club

Wash Tomorrow
(Washdamorra)
Swamp

Toolondo Reservoir

C214

Natimuk-Hamilton Rd

C214

Telangatak East-Rocklands Rd



**Barengi
Gadjin**
LAND COUNCIL
ABORIGINAL CORPORATION NT/EC

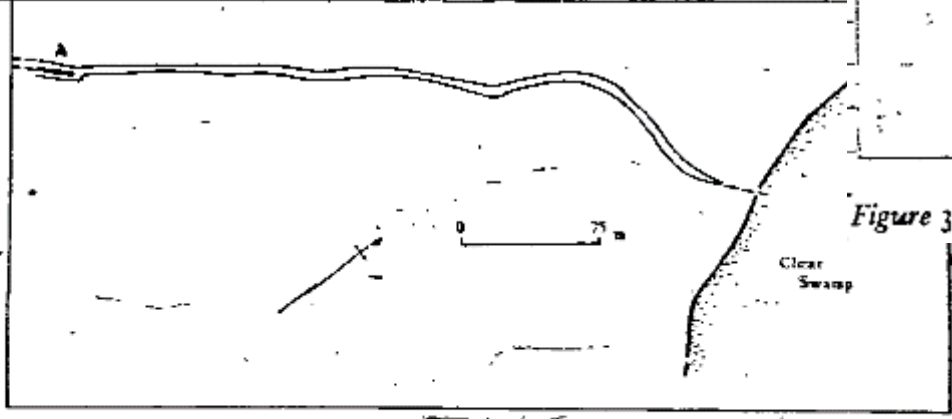
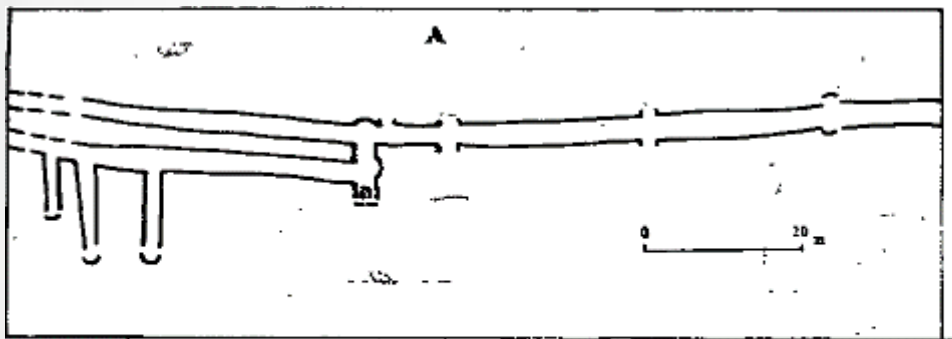


Figure 4 Detail from the Aboriginal drainage system at Toolondo showing the north-western section which drained into the Clear Swamp. The upper plan is an enlargement of area (A) indicated on the plan above

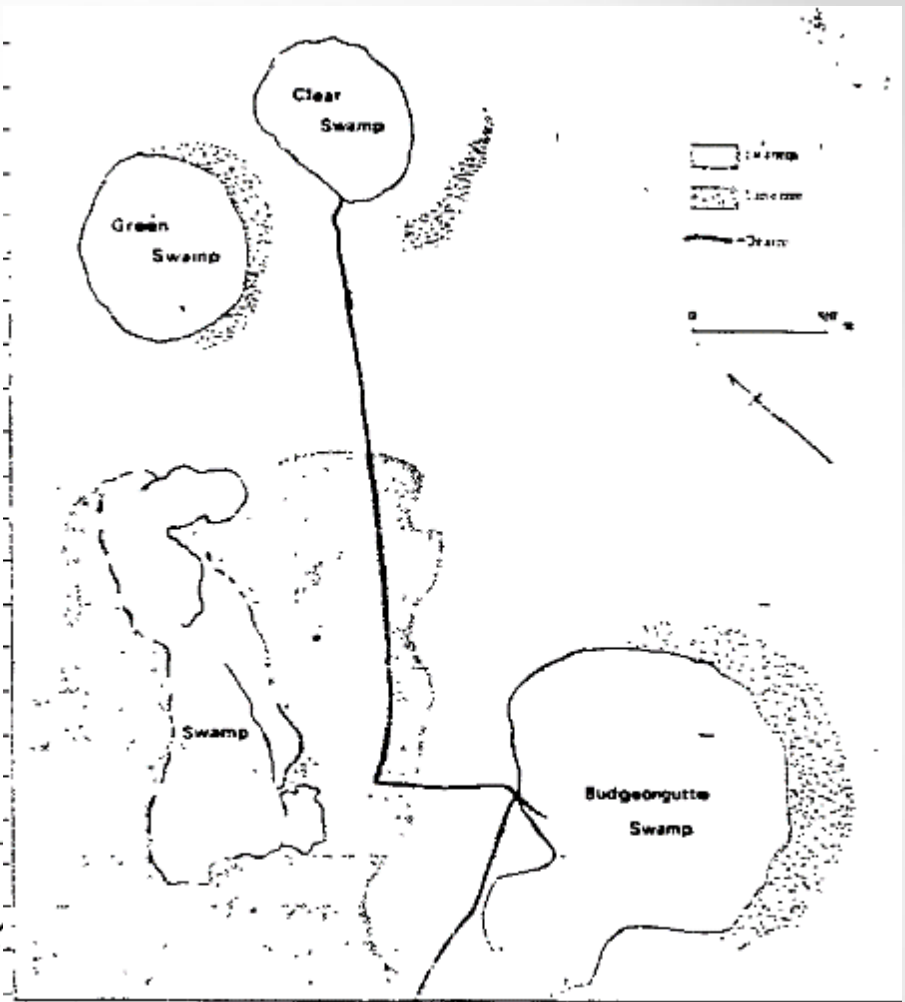
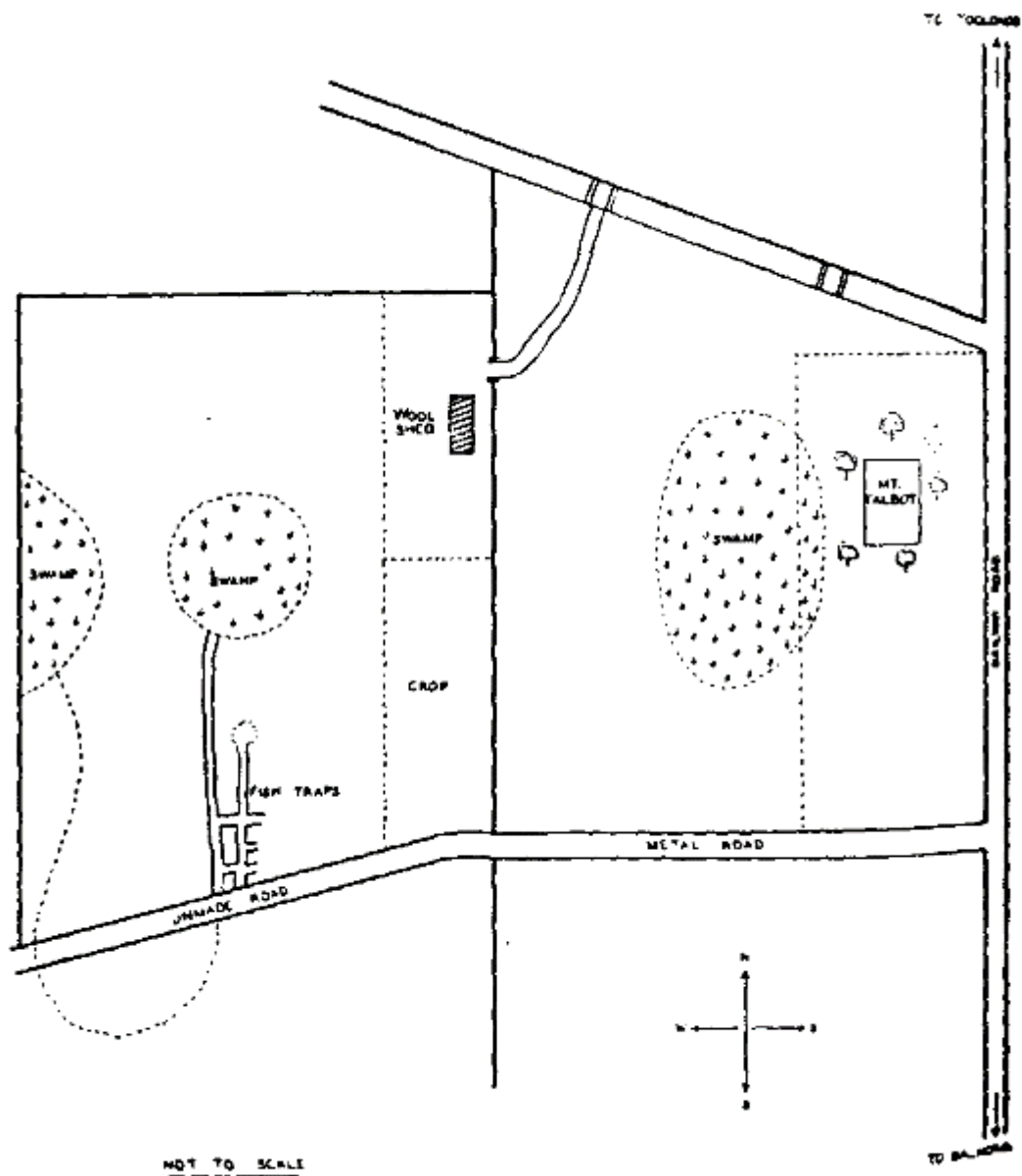
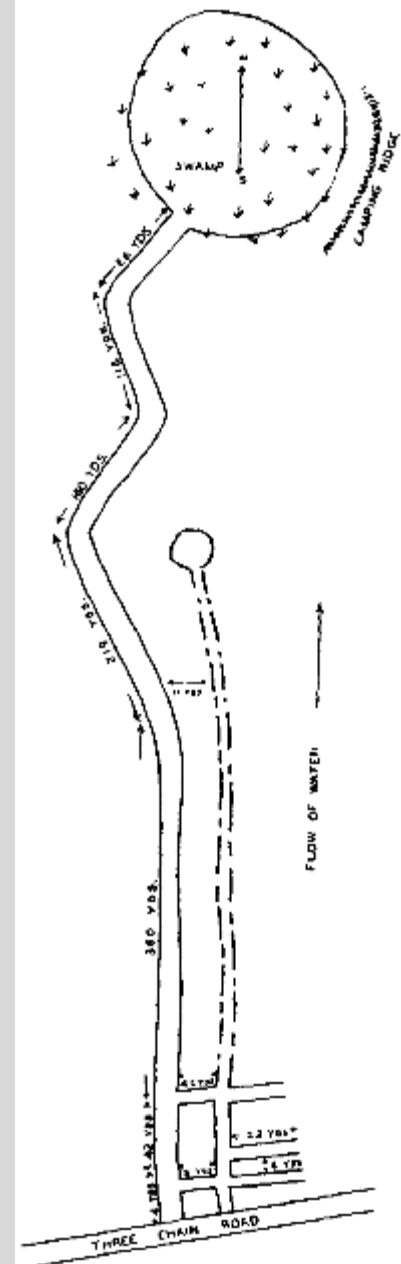


Figure 3 Ground plan of the Aboriginal drainage system at Toolondo




Locality Plan of Toolondo Fish Traps.





**Barengi
Gadjin**
LAND COUNCIL
ABORIGINAL CORPORATION RNTBC





Barringgi Gadyin –
The Wimmera River
and *Wotjobaluk*
Connection to Country

Darren Griffin
and
Ben Muir