

Pucker Gallery | Boston



ENCHANTED CONSTRUCTIONS

Photographic Collages by FRAN FORMAN



Escape Over Siena, 2007
Edition of 10 | 24 x 24" paper | 20.5 x 20.5" image | FF17

COVER:
Carousel Escape, 2012
Edition of 3 | 30.75 x 38" paper | 28.75 x 36.25" image | FF2
Edition of 15 | 17 x 22" paper | 15.5 x 19.75" image | FF2

All works are archival pigment prints.

ENCHANTED CONSTRUCTIONS

Photographic Collages by FRAN FORMAN

Fran Forman is a photographic artist who uses her imagination to take flight into new realms of seeing, feeling, and experiencing created worlds. Like a great chef or a bewitching magician, she uses her considerable talents to translate sensory experiences into photographic collages that draw from memory, history, and fantasy.

Her images are poetic, filled with metaphors that evoke the conflict of being rooted to the earth while yearning to be elsewhere. Forman's photographs pull us backwards and forwards, into the past and into the subconscious, drawing out our own memories of childhood, of growing up, of desire and loss. Each image is a journey in itself, each with a suitcase packed full of ideas and visual suggestions that allow the viewer their own expedition through color, memory, and connection. She provides us with enough space to time travel, through the past and into the future. That yin and yang of seeing is what makes her work so special.

Forman has been stirring the photographic pot with an unusual slight of hand, creating a recipe for alchemical thinking and conscious reminiscence. She comes to the task with all the right ingredients having held a succession of positions in the fields of graphic design, book cover art, and web design; in addition she studied art and sociology at Brandeis University, received an MSW in psychiatric social work, and then an MFA from Boston University. This sensitivity to the inner self and psychological thinking, coupled with her technical skill sets and a passion for surrealism, paradox, and illusion results in a process allowing her to assemble...magic.

Influenced by the Pictorialists of the early 20th century, by the color of the Fauvists, and colors and texture found in mid-century masterpieces, Forman also is drawn to surrealist painters, filmmakers, and photographers, in particular Ilya Zomb, Graceann Warn, Tom Chambers, Joseph Cornell, and Josephine Sacabo. These influences all have a common thread of assembled elements. But her influences extend beyond the art world; Forman is interested in cultural expression, especially from Mexico, Italy, and China, and historical means of transportation.

Her enchanted constructions have roots in the history of photography, where old photographs are reborn in new fanciful scenarios. She does not consider her work photography, per se; instead she thinks of it as painting with images. Forman's montages reflect similar themes that resonate throughout her projects, themes that draw on the idea of possibility, not only in the creation of something totally new and unique, but in the possibility of man's potential. Many of her images explore the idea of flight, using wings and feathers, balloons and kites, airplanes and blimps. A child wearing butterfly wings reflects the youthful desire to fly, whether in our dreams or in our imagination, and she provides the tools for that transportation as her figures rise skyward.

To appreciate the deep well of ideas and knowledge Forman brings to her work, it is important to understand the layers of learning that were the perfect storm of technology, design, observation, and humanity. As a child, Forman spent hours examining photographs found in *Life* and *Look* magazines, drawing and doodling, and listening to wild stories told by her grandmother about



Wellfleet Night #2, 2013
Edition of 15 | 17 x 22" paper | 16 x 20.75" image | FF36

sky-hooks and people flying. As an adult, Forman observed the rich sense of play and imagination by watching her own children, noting "...it was my daughters' playful extravagant imaginations, their funny and spirited conversations, their artwork and the structures they designed and built for themselves out of the oddest material."

Forman has always been at the forefront of technology, dabbling with computers in the 1980s moving into early Photoshop versions, and mastering the recent versions, all aligning so that she developed a keen knowledge of computer software and its possibilities. A major contribution to her computer education came when she was asked to design several multimedia CD-ROMs and visually rich websites; she filled these with

imagery depicting such diverse subjects as Jack Kerouac and the Beats, the story of immigration to the United States, and the Harlem Renaissance.

At that time, she also inherited "a treasure trove of family photos" and she began to look at photographs as more than just a documentation of a life lived. She is a collector of sorts, starting with her own family photographs, to snippets of imagery captured along the way: the corner of a painting, a pair of legs from an old photograph, a new landscape, textures and elements. When combined, these elements take on whole new meanings.

Her knowledge of creating art with a computer combined with her many years as a graphic designer taught Forman about visual communication,



Morning Sun, 2014
Edition of 15 | 17 x 22" paper | 16 x 20.25" image | FF49

about the simplicity of suggestion that allows for individual interpretation, and how to think about composition, texture, color, harmony, scale, symmetry, and of course metaphor and message. As Forman states, "I especially love typography, as font and logo design force you to think about positive and negative space, and how to use the simplest shapes to suggest meanings. And from typography, I've learned the value of metaphor and that every pixel counts."

Forman brings two final ingredients to her roster of artistic skills. Armed with degrees in social work, photography, and graphic design she has an innate understanding of the human psyche. She pays attention to small details, particularly the gaze of her subjects and gestures that show a

yearning for something more. The magic of Fran Forman comes from a life well seen and imagined and from her dedication to her craft and now teaching that craft. The hours she spends stirring the pixels into a rich stew of imagery is evident in the complex layers of her work, yet she leaves room for our own journey to take flight, providing the viewer with an incredible launching pad into our imaginations.

—ALINE SMITHSON

Aline Smithson is a fine art photographer, founder and editor of Lenscratch, and an educator. She is represented by several galleries and has been widely published internationally. Smithson also has been a juror, reviewer, and curator for many photographic institutions and festivals.



Masquerade Deserted, 2014
Edition of 15 | 17 x 22" paper | 16 x 20.75" image | FF45

After Icarus, 2013
Edition of 15 | 22 x 17" paper | 16.25 x 16" image | FF39



Inner Sanctum, 2014
Edition of 15 | 22 x 17" paper | 19 x 15.5" image | FF51

Charting the Course, 2014
Edition of 15 | 17 x 22" paper | 16 x 20" image | FF46



8



Rotation of the Earth, 2007
Edition of 15 | 22 x 17" paper | 16.25 x 16" image | FF9

Birdcage (Escape), 2013
Edition of 15 | 22 x 17" paper | 15 x 15.25" image | FF34



Smoke Signals, 2013
Edition of 15 | 17 x 22" paper | 16.75 x 20.75" image | FF35

Night Bird, 2012
Edition of 15 | 17 x 22" paper | 16.5 x 16.25" image | FF31



10



Returning to Clouds, 2014
Edition of 15 | 17 x 22" paper | 16 x 18" image | FF44

Man on a Bike, Riding Uphill, 2010
Edition of 15 | 17 x 22" paper | 15.5 x 15.75" image | FF8

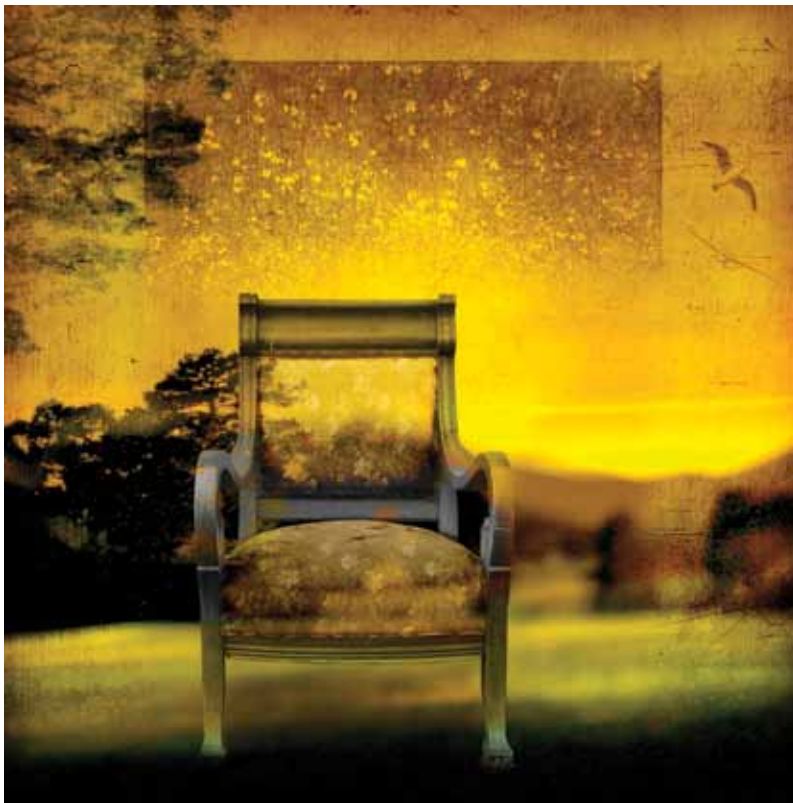


Evasive Dream, 2014
Edition of 15 | 22 x 17" paper | 15.75 x 16" image | FF47

Portrait with a Duo Lens, 2013
Edition of 15 | 22 x 17" paper | 16 x 16" image | FF48



12



The Chair (Absence), 2012
Edition of 15 | 22 x 17" paper | 16 x 16" image | FF27

Catch a Shooting Star, 2012
Edition of 15 | 17 x 22" paper | 16.25 x 17" image | FF25



Cosmic Aria, 2009
Edition of 15 | 17 x 22" paper | 15.5 x 20" image | FF28

Old Sun-Moon, 2013
Edition of 15 | 17 x 22" paper | 16 x 17" image | FF14

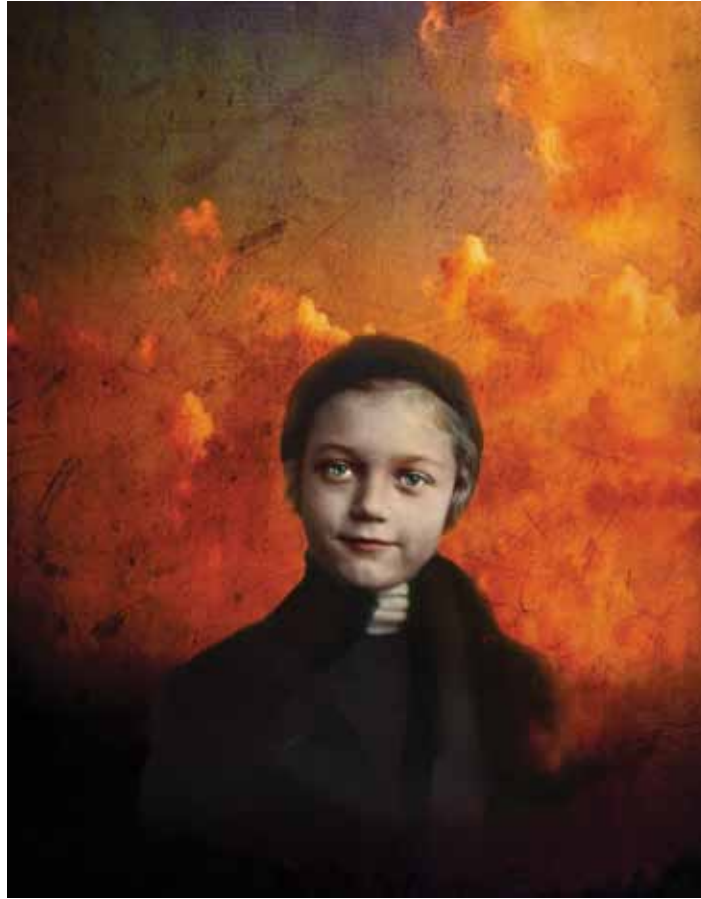


14



Le Poisson Volant, 2013
Edition of 15 | 17 x 22" paper | 14 x 18" image | FF38

Polish Girl, 2010
Edition of 15 | 22 x 17" paper | 18 x 14" image | FF30

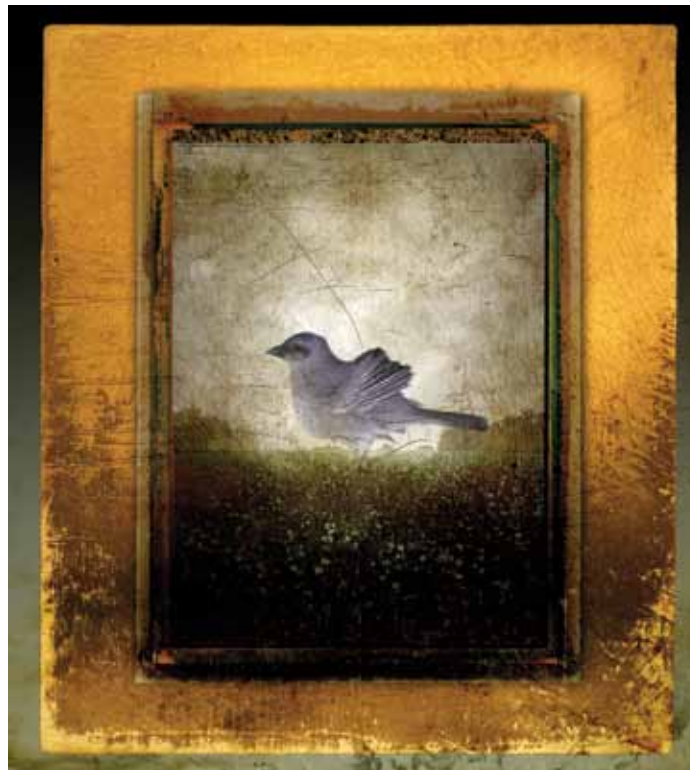


The Journey, 2006
Edition of 15 | 17 x 22" paper | 14 x 14" image | FF7
Edition of 10 | 24 x 24" paper | 18 x 18" image | FF7

The Secret Gift, 2008
Edition of 15 | 22 x 17" paper | 18.75 x 15" image | FF19



16



Solitary Bird, 2009
Edition of 15 | 17 x 22" paper | 16.75 x 15" image | FF4

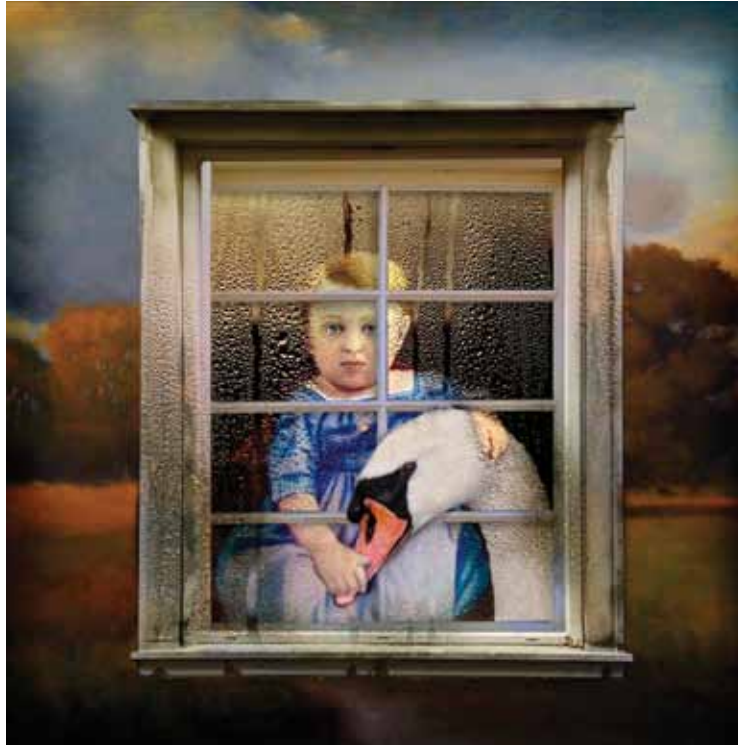


Butterfly Boy, 2009
Edition of 15 | 22 x 17" paper | 21 x 15" image | FF33



Circus Escape, 2014
Edition of 15 | 22 x 17" paper | 16 x 19.25" image | FF50

Child with a Swan, 2010
Edition of 15 | 13 x 19" paper | 12 x 12" image | FF12



Young Astronomer, 2008
Edition of 15 | 22 x 17" paper | 15.75 x 15" image | FF20

Flight, 2006
Edition of 15 | 22 x 17" paper | 16.5 x 16" image | FF29



20



In the Rain, 2008
Edition of 15 | 22 x 17" paper | 16.5 x 16" image | FF32

Lyme Pond No. 2, 2009
Edition of 6 | 26 x 38" paper | 23.5 x 35" image | FF10
Edition of 15 | 17 x 22" paper | 12.75 x 19.5" image | FF10



Portrait with Red Velvet, 2014
Archival pigment print with encaustic | 10 x 8" | FF43



Red Umbrella, 2014
Archival pigment print with encaustic | 8.25 x 8" | FF42

Forest Glow, 2012
Edition of 15 | 17 x 22" paper | 15.75 x 16" image | FF6

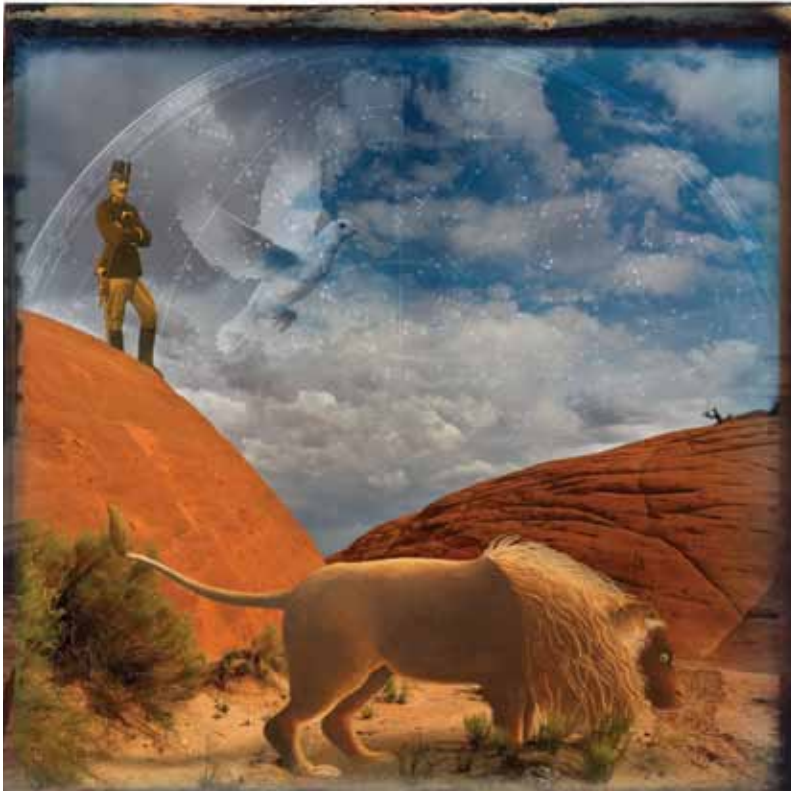


22



Catch a Cloud, 2011
Edition of 15 | 17 x 22" paper | 15.75 x 16" image | FF3

Henri's Predator, 2012
Edition of 15 | 17 x 22" paper | 16 x 16" image | FF24



The Rower, 2010
Edition of 15 | 17 x 22" paper | 15.75 x 15.5" image | FF26

Floating Urn, 2010
Edition of 15 | 17 x 22" paper | 13.75 x 14" image | FF1



24



Hangzhou Moon, 2011
Edition of 15 | 17 x 22" paper | 11.25 x 16.5" image | FF15

Two Portraits, 2011
Edition of 15 | 17 x 22" paper | 19 x 15.5" image | FF13



25



Green Box, 2013
Edition of 15 | 22 x 17" paper | 16 x 15.75" image | FF37

Portrait of a Man, 2010
Edition of 15 | 17 x 22" paper | 15.25 x 16" image | FF11



26



Rotation of the Earth, 2014
Archival pigment print with encaustic | 10 x 6.75" | FF41

Once Young, 2008
Edition of 20 | 13 x 19" paper | 12.5 x 15.5" image | FF5
Edition of 15 | 17 x 22" paper | 15.75 x 16" image | FF5



Hovering Child with Green Cat, 2007-2012
Edition of 15 | 22 x 17" paper | 18.75 x 16" image | FF21

Gondolier, 2013
Edition of 15 | 21 x 22.25" paper | 14.25 x 16" image | FF40



28



Letting Go, 2007
Edition of 15 | 22 x 17" paper | 15.75 x 13.75" image | FF22

Hiding Girl, 2010
Edition of 15 | 17 x 22" paper | 13.5 x 20.5" image | FF16



Courtyard, 2014
Edition of 15 | 17 x 22" paper | 15.5 x 17" image | FF52

BIOGRAPHY

Fran Forman received her BA from Brandeis University in sociology and art, an MSW in psychiatric social work, and then an MFA from Boston University.

She has held a succession of positions in the field of graphic design, book cover art, and web design. Between professional life and raising two daughters, Forman continued to create her personal art, combining her illustrative and photographic skills with a passion for surrealism, paradox, illusion, assemblage, the non-human world, and the dislocations of time and place. Forman is a Resident Scholar at the Women's Studies Research Center at Brandeis and a recipient of several grants. She teaches digital collage at various colleges and her work has been exhibited widely, both locally and internationally.

She has won significant top prizes: the 2013 Julia Margaret Cameron International First Prize in Fine Art Photography, the 2012 Px3 *Prix de la Photographie* (Gold, Silver, and First Prize in three different categories), where her work was on exhibit in Paris. In 2011,

she was one of only thirty Americans invited to attend and exhibit at the 2nd Biennial International Photographic Cultural Festival and Exhibition in Lishui, China, and her work is currently on tour at multiple venues throughout China. Also in 2011, she won Second Prize (among over 8000 entries) from the Worldwide Photography Gala in the Portraits category. In 2010 and 2008, she won first place, second place, and an honorable mention at the International Photography Awards, and an Honorable Mention at the Julia Margaret Cameron awards. In 2010, 2008, and 2007, she was a winner in the PX3 *Prix de la Photographie*, Paris, their People's Choice award, and Adobe Photoworkshop.com.

Her work appears in journals, magazines, and on book covers, and is included in the permanent collections of the Smithsonian National Air and Space Museum, Washington, DC, and the Museum of Fine Arts, Houston. A monograph, *Escape Artist: The Art of Fran Forman*, will be available in winter 2014 from Schiffer Publishing LTD. She has been represented by Pucker Gallery since 2013.

ARTIST STATEMENT

My images blur the boundaries between the real and the unreal. They are visual narratives that evoke a sense of transience, longing, memory, and dislocation.

In merging photography with painting and portraiture with dreamed landscapes, my story-telling images leverage the richness of color and the patina of textures to rearrange reality. I invite the viewer to engage with me in an imaginative discourse and then to supply their own narrative — to reimagine what is possible.

My process is an act of intuition and investigation, a construction and amalgam of, at first look, seemingly random objects. I build these dreamy visions and altered habitats with found or borrowed dis-

parate sources. I mine and transform contemporary and antique photos to create a mosaic from my imagination.

None of us creates in a vacuum. I pay tribute to the collage artists and the Pictorialists of the late 19th

century, as well as to the magic realists and surrealists who followed. I draw inspiration from painters who use visual narratives, symbolism, and vibrant color, such as Rothko. I am indebted to, among others, the juxtaposed assemblages of Cornell, the surrealism of Magritte, and the poetry and photography of Duane Michals.





Airborne, 2006
Edition of 10 | 24 x 24" paper | 21.75 x 20.75" image | FF18

CREDITS:
Design: Leslie Anne Feagley
Editors: Destiny M. Barletta and Tess Mattern
Photographs of encaustic works: John Davenport
Photograph of artist: Elin Spring
© 2014, Pucker Gallery
Printed in China by Toppan Leefung Printing Co.

PUCKER GALLERY

ESTABLISHED 1967 BOSTON

PUCKER GALLERY

240 Newbury Street, 3rd Floor
Boston, MA 02116

Phone: 617.267.9473 | Fax: 617.424.9759

E-mail: contactus@puckergallery.com

CHANGE SERVICE REQUESTED

Please visit www.puckergallery.com to view exhibition catalogues, experience audio tours, and subscribe to the *Artwork of the Week* and *Pottery of the Week* e-mail lists.

GALLERY HOURS

Monday through Saturday 10:00 AM to 5:30 PM

Sunday 10:30 AM to 5:00 PM

We offer one free hour of validated parking at the 200 Newbury Street Garage. The garage driving entrance is located on Exeter Street between Newbury and Boylston Streets. The nearest MBTA stop is Copley Station on the Green Line.

Pucker Gallery is a member of the Boston Art Dealers Association and the New England Appraisers Association.

ENCHANTED CONSTRUCTIONS

Photographic Collages by FRAN FORMAN

DATES: 22 November 2014 through 4 January 2015

OPENING RECEPTION: 22 November 2014, 3:00 PM to 6:00 PM

The public is invited to attend. The artist will be present.



Melies' Dream, 2012

Edition of 15 | 17 x 22" paper | 16 x 20" image | FF23