



MARGUERITE ROBICHAUX

Edge of Wilderness

PUCKER GALLERY | BOSTON



CATHEDRAL WOODS, MONHEGAN
Oil on linen | 40 x 26" | MR300



SUGAR MAPLE
Oil on birch panel | 10 x 10" | MR309



APRIL IN VERMONT I
Oil on birch panel | 6 x 6" | MR284



APRIL IN VERMONT II
Oil on birch panel | 6 x 6" | MR285



APRIL IN VERMONT III
Oil on birch panel | 6 x 6" | MR286



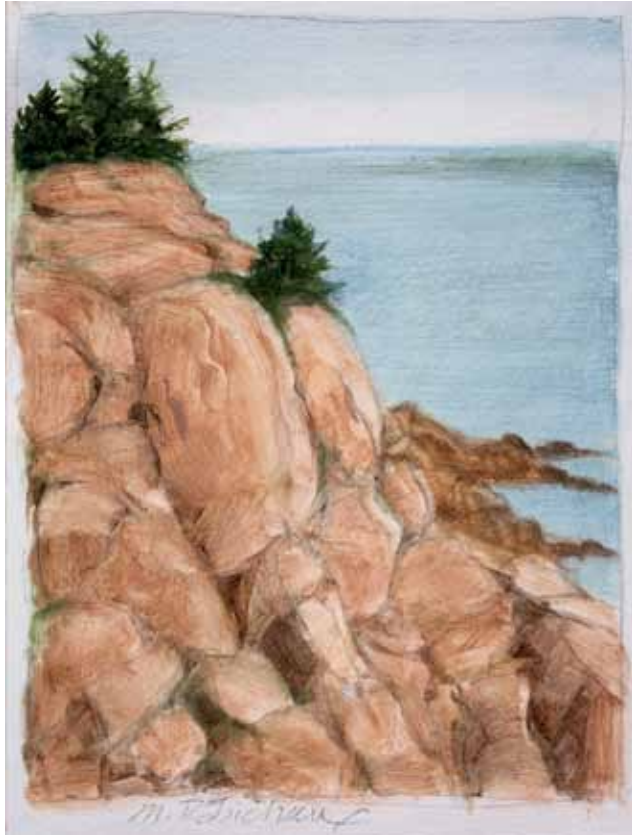
APRIL IN VERMONT V
Oil on birch panel | 6 x 6" | MR288



EGRETS
Oil on birch panel | 8 x 6" | MR305



NOVEMBER IN MAINE, DAWN
Oil on birch panel | 8 x 8" | MR290



BASS HARBOR HEAD
Oil on birch panel | 8 x 6" | MR295



SPANISH LAKE
Oil on birch panel | 8 x 6" | MR303



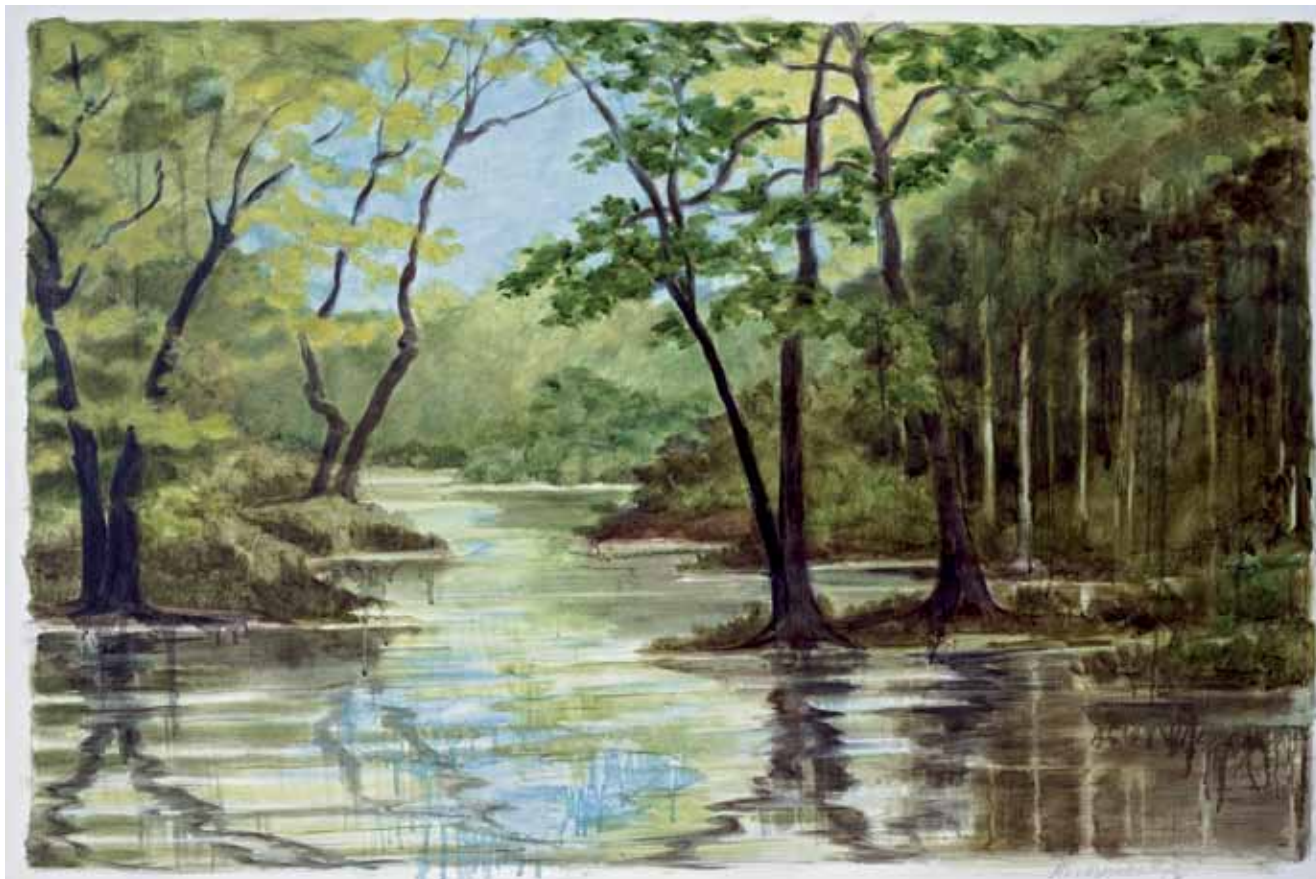
SWAMP MAPLES
Oil on birch panel | 8 x 6" | MR304



STUDY FOR KATAHDIN AUTUMN
Watercolor, graphite, and ink on paper | 4 x 6.5" | MR306



RAINBOW LAKE
Watercolor, graphite, and ink on paper | 5.75 x 9.25" | MR307



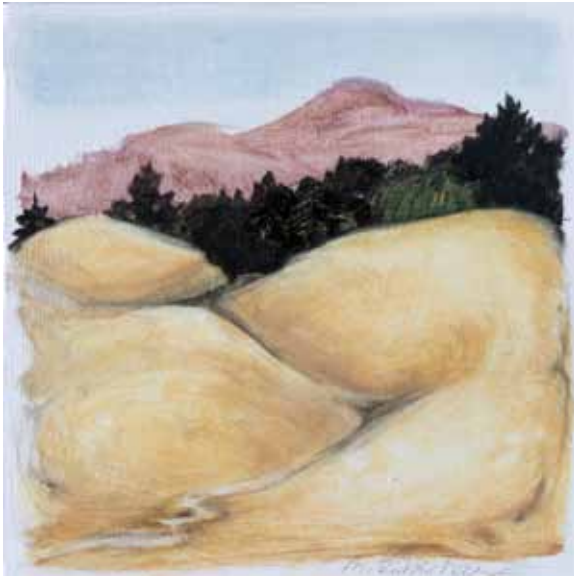
BAYOU MANCHAC
Oil on canvas | 24 x 36" | MR301



MAINE MOUNTAIN STUDY
Watercolor, graphite, and ink on paper | 5 x 8.75" | MR308



PALMETTO MARSH
Watercolor and ink on paper | 7 x 9.5" | MR312



APRIL IN VERMONT IV
Oil on birch panel | 6 x 6" | MR287



APRIL IN VERMONT VI
Oil on birch panel | 6 x 6" | MR289



POND ISLAND, SCHOODIC
Oil on birch panel | 8 x 6" | MR296



BEEHIVE LAGOON, ACADIA
Oil on birch panel | 8 x 6" | MR297



CHENIERS
Watercolor and graphite on paper | 6.5 x 9.5" | MR311



CHENIER OAK
Oil on birch panel | 10 x 10" | MR310



NOVEMBER IN MAINE, SUNRISE
Oil on birch panel | 8 x 8" | MR291



NOVEMBER IN MAINE, MIDDAY
Oil on birch panel | 8 x 8" | MR292



NOVEMBER IN MAINE, SUNSET
Oil on birch panel | 8 x 8" | MR293



FELICIANA WOODS, LOUISIANA
Oil on linen | 40 x 26" | MR299

Marguerite Robichaux

BIOGRAPHY

Marguerite Robichaux lives in the woods of Maine where her studio lies in the shadow of the Bigelow Mountain Range—one of her favorite subjects. When she travels it is with a set of watercolors, a sketch pad or camera, and she spends part of each year painting in a small studio in southern Louisiana where she grew up. She received her M.F.A. from Louisiana State University and first came to Maine as a student, eventually settling in the western mountains. Her work is included in the collections of the Portland Museum of Art, the Farnsworth Museum, the Ogunquit Museum of American Art, Colby and Bates Colleges, and many private and corporate collections.

ARTIST STATEMENT

As urban sprawl and commercial and industrial development claim more and more of our land, it is important for me to record and celebrate the beauty and dignity of our natural world. I live on the edge of wilderness, travel to remote destinations, and seek out unspoiled places. These landscapes figure prominently in my work because they figure prominently in my life. I am drawn to the order and geometry of fields and pastures, the noble sweep of farmlands, the grandeur of mountain peaks and rugged coastline, the serenity of still water, and the power of rushing rivers and waterfalls. I am passionate about conveying a sense of awe and respect for our disappearing wilderness.

Living in a state with a long and venerable tradition of landscape painting, I have had to find my own voice. To go beyond the picturesque and purely representational and to paint without sentimentality, I have had to trust my visual intuition and create a language of my own. The dripping paint and unconcealed edges—a staple of nonrepresentational painting—are true to the integrity of the medium. Thin, transparent paint loosely brushed, wiped away and smeared, and remnants of original graphite drawings suggest that these images are artifice. I make paintings, not landscapes.

I paint to bear witness to the importance of preserving our natural environment. I create to leave a visual legacy.



CREDITS:

Design: Leslie Anne Feagley | Editors: Jeanne Koles and Paige Johnson | Photography: Dennis Griggs

© 2017, Pucker Gallery | Printed in the USA by Modern Postcard

PUCKER GALLERY

ESTABLISHED 1967 BOSTON

PUCKER GALLERY

240 Newbury Street, 3rd floor

Boston, MA 02116

Phone: 617.267.9473

E-mail: contactus@puckergallery.com

Please visit www.puckergallery.com to view current and past exhibition catalogues and to subscribe to the *Artwork of the Week* e-mail list.

GALLERY HOURS:

Monday through Saturday 10:00 AM to 5:30 PM

Sunday 10:30 AM to 5:00 PM

We offer one free hour of validated parking at the Prudential Center Garage. The garage driving entrance is located at 79-99 Exeter Street. The nearest MBTA stops are Hynes Convention Center and Copley Station on the Green Line.

Pucker Gallery is a member of the Boston Art Dealers Association and the New England Appraisers Association.



SOUTH BOG STREAM

Oil and graphite on canvas | 24 x 36" | MR302

MARGUERITE ROBICHAUX

Edge of Wilderness

DATES:

9 December 2017 through 28 January 2018

OPENING RECEPTION:

9 December 2017, 3:00 PM to 6:00 PM

The public is invited to attend.

The artist will be present.

Cover Image:

SUNSET ON THE LEVEE

Oil on linen | 28 x 40" | MR298