

# ROOT & BRANCHES

THREE GENERATIONS OF THE **HAMADA FAMILY**



Pucker Gallery • Boston



Shinsaku Hamada  
 Bottle  
 Ji glaze with hakeme decoration  
 8 x 6.25 x 4"  
 HS29

Tomoo Hamada  
 Bottle  
 Salt glaze  
 10.25 x 9.5 x 4.5"  
 HT191

Shoji Hamada  
 Squared bottle, 1965  
 Tetsue brushwork  
 9 x 6.25 x 3"  
 H31 with wooden box signed by Shoji Hamada

*“It is the constant seeking of artistic expression and the collective desire to move forward rather than to perpetuate a static tradition that makes the Hamada three generations so extraordinary.”*

PHIL ROGERS, *RELATED VOICES*, 4

*All works are stoneware.  
 All works by Shinsaku Hamada and Tomoo Hamada are available with a signed wooden box.*

## SHOJI HAMADA



Shoji Hamada  
Square vase  
Persimmon glaze  
9 x 6.25 x 6"  
H97 with wooden box signed by Shinsaku Hamada



Shoji Hamada  
Vase  
White glaze with tetsue brushwork  
9 x 6 x 3.25"  
PJ1

Shoji Hamada was born in 1894 in Tokyo, Japan. He graduated from Tokyo Technical College in 1916 and enrolled at Kyoto Ceramics Research. From 1920 to 1923, Hamada traveled extensively to learn about diverse ceramic and folk craft traditions and built a climbing kiln in England at St Ives with Bernard Leach (1887–1979). In 1952, Hamada travelled with Soetsu Yanagi (1889–1961) and Bernard Leach throughout the United States to give ceramic demonstrations and workshops. After receiving the Tochigi Prefecture Culture Award and Minister of Education Award for Art, Hamada was designated a Living National Treasure in 1955. Thereafter, he was appointed Director of the Japan Folk Crafts Museum and awarded the Okinawa Times Award and Order of Culture from the Emperor. In 1961, *Shoji Hamada: Collected Works* was published by Asahi Shimbun. In 1973, Hamada received an honorary Doctor of Art degree from the Royal College of Art in London, England. Shoji Hamada died in 1978, a year after the completion of the Mashiko Sankokan Museum, which was built in his home.



Shinsaku Hamada  
*Faceted vase*  
 Black glaze  
 8.5 x 6 x 6"  
 HS88

Tomoo Hamada  
*Stacking vase*  
 Black glaze with akae decoration  
 12.5 x 6.5 x 7"  
 HT376

Shoji Hamada  
*Faceted vase, c. 1960*  
 Salt glaze with wax resist brushwork  
 10.25 x 5.25 x 5.25"  
 H43

*“Tradition, the accumulation of the experience and wisdom of many generations, is what Buddhists call the Given Power—an aggregate power that in all cases transcends the individuals.”*

SOETSU YANAGI, *THE UNKNOWN CRAFTSMAN*, 135





Shoji Hamada  
Pourer, c. 1960s  
Tetsue brushwork  
4.25 x 7.25 x 8.75"  
H5



Shoji Hamada  
Vase  
Persimmon glaze  
10.25 x 5.5 x 5.5"  
H98 with wooden box signed by Shoji Hamada



Shoji Hamada  
Square bottle  
Iron glaze with white cross  
9.25 x 4 x 4"  
H95 with wooden box signed by Shoji Hamada



Shoji Hamada  
 Lidded bowl, c. 1930s  
 Trailed decoration  
 6 x 7.75 x 7.75"  
 H11 with wooden box signed by Shoji Hamada

Shinsaku Hamada  
 Lidded box  
 Salt glaze with hakeme and akae decoration  
 3.75 x 4.5 x 4.25"  
 HS101

Tomoo Hamada  
 Lidded box  
 Kaki glaze with akae decoration  
 3 x 4 x 4"  
 HT12

*“I said I was not interested in making or creating something novel or refined or acceptable from the standpoint of the usual idea of beauty, but that I was aiming at making correct and healthy things, pottery that is practical and not forced, that responds to the nature of the materials. I did not want to make something outwardly beautiful but to begin from the inside.”*

SHOJI HAMADA, *HAMADA POTTER*, 79



Shoji Hamada  
*Square dish*, 1960  
 Kaki glaze with trailed decoration  
 3.25 x 12.5 x 12.5"  
 H33 with wooden box signed by Shinsaku Hamada



Shoji Hamada  
*Oval dish*, c. 1945  
 Kaki glaze with wax resist brushwork  
 3 x 11 x 9.75"  
 H49



Shoji Hamada  
*Obachi*, c. 1960  
 Green glaze with trailed decoration  
 4.5 x 18 x 18"  
 H42 with wooden box signed by Shinsaku Hamada

*“I manage to get along with only five or six glazes. I use them over and under each other, sometimes with ochre slip, which produces many colour variations. If I count all the variations, the number and type of glazes are countless. It is just like a Persian carpet made of six different colours.”*





Shoji Hamada  
 Covered jar, 1945  
 Tetsue brushwork  
 7.5 x 8 x 8"  
 LBI



Shoji Hamada  
 Bowl, c. 1957-1960  
 Ash glaze with trailed decoration  
 2.75 x 9.5 x 9.25"  
 H2



Shoji Hamada  
 Vase, c. 1950  
 Tetsue brushwork  
 6.75 x 4.75 x 4.75"  
 H56 with wooden box signed by Shoji Hamada

*“Many people know where to look, but only a few know what to appreciate. Knowing and appreciating are not the same thing. Knowing things sometimes impedes the power of true observation. Those who can see with their own eyes are truly fortunate. Such seeing can lead to other discoveries and other creations.”*



Shoji Hamada  
*Pourer*, 1935  
 Amber glaze  
 4.25 x 7.25 x 8.25"  
 LB4



Shoji Hamada  
*Waisted vase*  
 Hakeme and tetsue brushwork  
 8.75 x 3.5 x 3.5"  
 H90



Shoji Hamada  
*Vase*, c. 1970  
 Hakeme and tetsue brushwork  
 8.25 x 3.75 x 3.75"  
 H53 with wooden box signed by Shoji Hamada



Shoji Hamada  
Plate, c. 1970  
Black and kaki glaze with trailed decoration  
2.25 x 11 x 11"  
H46

*“Just to give oneself up to folk art will never do. One must chew and eat up mingei—eat it, consume it, put it in your belly; to put it in your system and digest it is what is required in this day and age. We are to assimilate it and do something of our own with this food.”*





Shoji Hamada  
*Bowl*, 1945  
 Kaki glaze with brushwork decoration  
 2.75 x 9.5 x 9.5"  
 H62 with wooden box signed by Shoji Hamada



Shoji Hamada  
*Mizusashi*, c. 1970  
 Kaki glaze with wax resist brushwork  
 5.75 x 7 x 6"  
 H45



Shoji Hamada  
 Vase  
 Kaki glaze  
 10.5 x 8.5 x 7.25"  
 H99 with wooden box signed by Shoji Hamada

*“It has been said many times but nevertheless it is true: there is naturalness in Shoji’s work that springs from his holistic approach to a chosen way of life that not only includes his pottery-making but incorporates the whole of the waking day.”*



Shoji Hamada  
*Hexagonal vase, 1970*  
 Black and kaki glaze  
 8 x 3.75 x 3.75"  
 H26



Shoji Hamada  
*Textured bottle, c. 1930*  
 Black glaze  
 10.5 x 5.5 x 5.5"  
 H36 with wooden box signed by Shoji Hamada



Shoji Hamada  
*Plate*  
 Tenmoku and nuka glaze with ladle poured decoration  
 1.5 x 9.5 x 9.75"  
 H83 (GB54)



Shoji Hamada  
Square plate  
Persimmon glaze  
3 x 13 x 13"  
H96 with wooden box signed by Shoji Hamada

*“When I was young, Grandpa Shoji, who loved his grandchildren, gave me lessons and provided an environment in which I could draw and paint in a free way and learn the fundamentals of creating pottery.”*





Shoji Hamada  
*Squared bottle*, c. 1965  
 Kaki glaze with wax resist brushwork  
 8.25 x 5.75 x 3"  
 H41 with wooden box signed by Shinsaku Hamada



Shoji Hamada  
*Bottle*, c. 1950  
 Natural ash glaze  
 9.25 x 7 x 5.75"  
 H44



Shoji Hamada  
*Square dish*, 1965  
 Kaki glaze with wax resist brushwork  
 2.5 x 10.5 x 10.5"  
 H65



Shoji Hamada  
Set of five plates, 1972  
Tetsue brushwork  
1.75 x 7.5 x 7.5" each  
NU1303-3 with wooden box signed by Shoji Hamada

*“That was his [Shoji’s] genius—a seemingly infinite stream of ideas that came from his subconscious. An innate and wholly intuitive sense of pattern and placement coupled with a total confidence in his glazes and pigments. Hamada wasn’t concerned with being innovative and yet he was.”*

PHIL ROGERS, *RELATED VOICES*, 5



Shoji Hamada  
*Mizusashi*, 1940  
 Ash glaze  
 6.5 x 6.25 x 5"  
 LB2 with wooden box signed by Shoji Hamada



Shoji Hamada  
*Incense burner*  
 Tenmoku and kaki glaze  
 3.5 x 3.25 x 3.25"  
 H80 (GB30)



Shoji Hamada  
*Plate*, 1970  
 Tenmoku and kaki glaze with trailed decoration  
 2 x 10.75 x 10.75"  
 H17 with wooden box signed by Shoji Hamada



Shoji Hamada  
Plate, 1970  
Tenmoku and nuka trailed decoration  
2.25 x 11.75 x 11.75"  
H16 with wooden box signed by Shoji Hamada

*“With one’s intellect, with one’s mind, one can understand what tradition means. The folk art formula may be fed through the mind and through the intellect. But in work, what comes out must come out through one’s own fingertips, one’s own hands, otherwise it is no work at all.”*





Shoji Hamada  
*Plate*  
 Tenmoku and nuka glaze with ladle poured decoration  
 1.5 x 9.5 x 9.75"  
 H82 (GB53)



Shoji Hamada  
*Rectangular dish, c. 1950*  
 Kaki glaze with wax resist brushwork  
 2.5 x 9 x 7"  
 H50



Shinsaku Hamada  
Plate  
Kaki glaze with akae decoration  
1.5 x 10.75 x 10.75"  
HS73

Tomoo Hamada  
Plate  
Akae decoration  
2.25 x 14 x 14"  
HT147

Shoji Hamada  
Plate, 1950  
Kaki glaze with wax resist brushwork  
2 x 9.75 x 9.75"  
H27

*“It actually does not take more than fifteen seconds to decorate and glaze one of these big dishes with poured glaze, and many visitors ask me questions: isn’t that too fast; am I always satisfied; and why are they so expensive if they only take me fifteen seconds to decorate? I reply, The dishes take me sixty years and fifteen seconds to do.”*

## SHINSAKU HAMADA

Shinsaku Hamada was born in 1929 in Tokyo, Japan, as the second son of Shoji Hamada. A year later, the Hamada family moved to Mashiko in Tochigi Prefecture. He studied industrial art at Waseda University in Tokyo and thereafter traveled with his father to assist him during demonstrations and lectures. Hamada held his first solo exhibition at the Mitsukoshi Department Store in 1970, and has since had numerous landmark exhibitions there, including a 2009 show to celebrate his 80th birthday. In 1978, Hamada became a Kokugakai National Art Association member and was named Director of the Mashiko Sankokan Museum. In 1999, he received the 27th Shimotsuke Citizens Award. Hamada's work is included in the collections of the Prefectural Governor's residence and the Brooklyn Museum of Art. Hamada continues to exhibit internationally and work alongside his son in the original compound build by his father.



Shinsaku Hamada  
Plate  
Kaki glaze with akae decoration  
1.25 x 9.75 x 9.75"  
HS108



Shinsaku Hamada  
Vase  
Kaki glaze with akae decoration  
7.25 x 8.75 x 8.75"  
HS27



Shinsaku Hamada  
Vase  
Salt glaze  
8 x 5 x 5"  
HS70

Tomoo Hamada  
Rectangular bottle  
Salt glaze  
11.5 x 5.75 x 4.75"  
HT273

Shoji Hamada  
Rectangular bottle, late 1960s  
Black and nuka glaze  
9.25 x 4 x 4"  
H39 (FM) with wooden box signed by Shoji Hamada

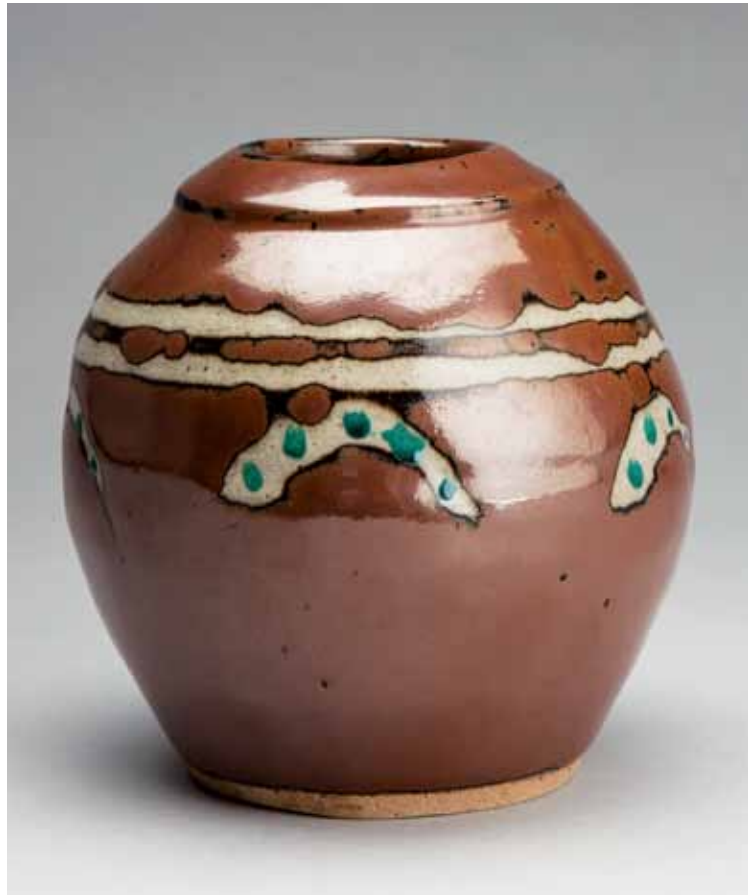
*“All art movements tend to the pursuit of novelty, but the true essence of beauty can exist only where the distinction between the old and the new has been eliminated.”*

SOETSU YANAGI, *THE UNKNOWN CRAFTSMAN*, 131





Shinsaku Hamada  
Faceted vase  
Black and white glazes  
8.25 x 5 x 5"  
HS107



Shinsaku Hamada  
Vase  
Kaki glaze with akae decoration  
6.25 x 6 x 5.75"  
HS99



Shinsaku Hamada  
Yunomi  
Iron decoration  
3.25 x 3.5 x 3.5"  
HS110

Yunomi  
Iron decoration  
3.25 x 3.75 x 3.75"  
HS109

Yunomi  
Iron decoration  
3.25 x 3.25 x 3.25"  
HS111



Shinsaku Hamada  
Chawan  
Kaki glaze with akae decoration  
3.25 x 4.5 x 4.5"  
HS77



Shinsaku Hamada  
Large plate  
Celadon glaze  
5 x 19.5 x 19.5"  
HSI

*“...the chief characteristic of handcrafts is that they maintain by their very nature a direct link with the human heart, so that the work always partakes of a human quality.”*

SOETSU YANAGI, *THE UNKNOWN CRAFTSMAN*, 107



Shinsaku Hamada  
Vase  
Salt glaze with hakeme decoration  
8 x 3.5 x 3.5"  
HS91



Shinsaku Hamada  
Vase  
Akae decoration  
7 x 3.5 x 3.5"  
HS35



Shinsaku Hamada  
Vase  
Black and white glazes  
7.75 x 5 x 5"  
HS71

Vase  
Salt glaze  
8.75 x 5.25 x 4.75"  
HS72



Shinsaku Hamada  
 Set of five plates  
 Tensue decoration  
 1.5 x 7.75 x 7.75" each  
 HS40

*“The special quality of beauty in crafts is that it is a beauty of intimacy. Since the articles are to be lived with every day, this quality of intimacy is a natural requirement. Such beauty establishes a world of grace and feeling. ... The beauty of such objects is not so much of the noble, the huge, or the lofty as a beauty of the warm and familiar. ... People hang their pictures high up on walls, but they place their objects for everyday use close to them and take them in their hands.”*





Shinsaku Hamada  
*Bottle*  
 Ji glaze with akae decoration  
 8 x 2 x 6"  
 HS49



Shinsaku Hamada  
*Vase*  
 Akae decoration  
 9.75 x 5.25 x 5.25"  
 HS36



Shinsaku Hamada  
*Vase*  
 Black and white glazes  
 8.25 x 11 x 11"  
 HS67



Shinsaku Hamada  
 Plate  
 Kaki glaze with akae decoration  
 2 x 13.5 x 13.5"  
 HS12

*“Hamada has sometimes used English shapes and even trail-glazed in the slip manner, but he has never just copied—there is all the world of difference between imitation and inspiration.”*

BERNARD LEACH, *HAMADA POTTER*, 50-51



Shinsaku Hamada  
 Plate  
 White glaze with tensue decoration  
 1.5 x 11 x 11"  
 HS38



Shinsaku Hamada  
 Bottle  
 Kaki glaze with akae decoration  
 8.5 x 6.25 x 3.75"  
 HS28



Shinsaku Hamada  
 Incense container  
 White glaze with akae decoration  
 2 x 3.25 x 2.5"  
 HS95



Shinsaku Hamada  
 Fluted incense container  
 Kaki glaze  
 3 x 3 x 3"  
 HS102



Shinsaku Hamada  
Faceted vase  
Salt glaze with hakeme decoration  
11.75 x 8.5 x 8.5"  
HS87

*“A pattern is a picture of the essence of an object,  
an object’s very life; its beauty is of that life.”*

SOETSU YANAGI, *THE UNKNOWN CRAFTSMAN*, 114





Shinsaku Hamada  
Vase  
Hakeme decoration  
6.5 x 3 x 3"  
HS37



Shinsaku Hamada  
Faceted chawan  
Green glaze  
3.75 x 4.75 x 4.75"  
HS75

Faceted chawan  
Black glaze  
3.25 x 5 x 5"  
HS76



Shinsaku Hamada  
Chawan  
White glaze  
3 x 5 x 5"  
HS15



Shinsaku Hamada  
Vase  
Salt glaze  
5.75 x 6.25 x 6.25"  
HS31



Shinsaku Hamada  
Plate  
Blue glaze  
2.25 x 13.25 x 13.25"  
HS92

*“...a pot, or indeed any work of art, is not an expression  
of the maker alone, but of a degree of enlightenment wherein infinity,  
however briefly, obliterates the minor self.”*

BERNARD LEACH, *THE UNKNOWN CRAFTSMAN*, 90



Shinsaku Hamada  
Vase  
Kaki glaze with wax resist decoration  
5.75 x 5.25 x 5.25"  
HS51



Shinsaku Hamada  
Bottle  
White glaze with akae decoration  
7.5 x 2.5 x 5.5"  
HS50



Shinsaku Hamada  
Vase  
Kaki glaze  
8.25 x 8.25 x 8.25"  
HS5



Tomoo Hamada  
 Bowl  
 Black and white glazes with akae decoration  
 8.5 x 16.5 x 16.5"  
 HT339

Shoji Hamada  
 Bowl, c. 1970  
 Tetsue brushwork  
 4.25 x 8.25 x 8.25"  
 H48

Shinsaku Hamada  
 Faceted bowl  
 Salt glaze  
 4.25 x 6.75 x 6.75"  
 HS82

*“The root may be firmly planted in tradition, but when it buds,  
 when it branches out on the surface, it must be fresh and new.”*

SHOJI HAMADA, HAMADA POTTER, 96



## TOMOO HAMADA

Tomoo Hamada was born in 1967 in Mashiko, Japan, as the second son of Shinsaku Hamada and a grandson of Shoji Hamada. In 1989 and 1991, Hamada received undergraduate and graduate degrees in sculpture from Tama Art University in Tokyo. Tomoo Hamada has exhibited, lectured, and given workshops internationally and was integral in helping the pottery community of Mashiko rebuild from the devastating Tohoku earthquake of 2011. His ceramic works are included in the permanent collections of numerous museums, including the Tochigi Prefectural Museum of Fine Arts; the Museum of Fine Arts, Boston; the Victoria & Albert Museum, London; the Asian Art Museum, San Francisco; and the Embassy of Japan in the UK. He currently lives in Mashiko on the original compound his grandfather built, and works alongside his father. In 2012, he became Director of the Shoji Hamada Memorial Mashiko Sankokan Museum.



Tomoo Hamada  
Tie bottle  
Black glaze with akae decoration  
9.75 x 10.5 x 4.5"  
HT414



Tomoo Hamada  
Vase  
Kaki glaze with akae decoration  
4 x 3.5 x 3.5"  
HT417

Vase  
Blue glaze with akae decoration  
4 x 3.75 x 3.75"  
HT418



Shinsaku Hamada  
Vase  
Kaki glaze  
14 x 7.5 x 7.5"  
HS26

Tomoo Hamada  
Stacking vase  
Kaki glaze with akae decoration  
12.5 x 7 x 7"  
HT334

Shoji Hamada  
Square vase, 1960  
Kaki glaze  
9 x 7 x 6.25"  
H64

*"...might not beauty, and the love of the beautiful, perhaps bring peace and harmony? Could it not carry us forward to new concepts of life's meaning? Would it not establish a fresh concept of culture? Would it not be a dove of peace between the various cultures of mankind?"*

SOETSUYANAGI, *THE UNKNOWN CRAFTSMAN*, 104-105



Tomoo Hamada  
*Small stacking vase*  
 Kaki glaze with akae decoration  
 7 x 6 x 6"  
 HT416



Tomoo Hamada  
*Beaker*  
 Kaki glaze with akae decoration  
 4.5 x 3.5 x 3.5"  
 HT419



Tomoo Hamada  
*Sake bottle*  
 Salt glaze  
 5.5 x 4.25 x 4.25"  
 HT425

*Sake bottle*  
 Kaki glaze with akae decoration  
 5.75 x 3.25 x 3.25"  
 HT424

*Sake bottle*  
 Salt glaze  
 5.25 x 4 x 4"  
 HT426



Tomoo Hamada  
 Bottle  
 Kaki glaze with akae decoration  
 8 x 7.5 x 5.25"  
 HT342

Shinsaku Hamada  
 Vase  
 Kaki glaze with akae decoration  
 8.25 x 5.75 x 5.5"  
 HS98

Shoji Hamada  
 Bottle  
 Tenmoku, kaki, and nuka glaze with finger  
 swipe decoration  
 8.5 x 4.75 x 4.75"  
 H73 (GB12)

*“His work had austerity, nobility, simpleness, warmth, and naturalness, at one and the same time. The virtue of Hamada’s pots are the innate virtues of the man himself, as they must be in any good artist’s work. His pots are warm, generous, spontaneous, and sturdy; they are as of the earth, earthy, and his main decorations are redolent of his immediate countryside—of the grass, grassy, of the brush, brush-like. His pots articulate like an oak tree, the bones of structure are not concealed, the modulations of form are intuitive, and all his pots stand firm on their feet.”*





Tomoo Hamada  
*Half-cut vase*  
 Blue glaze with akae decoration  
 6.75 x 8.5 x 3.75"  
 HT415



Tomoo Hamada  
*Yunomi*  
 Kaki glaze with akae decoration  
 3.5 x 3 x 3"  
 HT420

*Yunomi*  
 Kaki glaze with akae decoration  
 3.25 x 3.25 x 3.25"  
 HT422

*Yunomi*  
 Kaki glaze with akae decoration  
 3.25 x 3.25 x 3"  
 HT421

*Yunomi*  
 White glaze with akae decoration  
 3.25 x 3.75 x 3.75"  
 HT423



Tomoo Hamada  
*Lidded vase*  
 Salt glaze with hakeme decoration  
 10.25 x 11 x 11"  
 HT266

*Lidded vase*  
 Green glaze with hakeme decoration  
 8.75 x 9 x 9"  
 HT267

*“A good pattern is pregnant with beauty.  
 The maker of a pattern draws the essence of the thing seen  
 with his own heartbeat, life to life.”*



Tomoo Hamada  
 Plate  
 Black and white glazes with akae decoration  
 1.5 x 9.75 x 9.75"  
 HT391



Tomoo Hamada  
 Bottle  
 Ji glaze with akae decoration  
 7.5 x 9.25 x 9.25"  
 HT137



Tomoo Hamada  
Tie vase  
Salt glaze with hakeme decoration  
12 x 9 x 6.75"  
HT374

*"I do not have to emphasize the fact that my environment – surrounded by first class art and learning from my grandfather and father – helped me to appreciate beauty, value the essence of art, and develop 'good' eyes."*





Tomoo Hamada  
 Square dish  
 Ji glaze with akae decoration  
 1.25 x 10.75 x 10.75"  
 HT393



Tomoo Hamada  
 Chawan  
 Salt glaze  
 3.75 x 5.5 x 5.5"  
 HT346

Chawan  
 Salt glaze  
 3.5 x 4.75 x 4.75"  
 HT347



Tomoo Hamada  
Vase  
Salt glaze  
10.5 x 9.5 x 5.5"  
HT375

*“What I value most in ceramics is a free spirit combined  
with impeccable technique.”*

TOMOO HAMADA, *RESPECT & RENEWAL*, 3



Tomoo Hamada  
Vase  
Blue glaze  
6.25 x 5 x 5"  
HT388



Tomoo Hamada  
Faceted chawan  
Salt glaze  
3.5 x 4.25 x 4.25"  
HT80



Tomoo Hamada  
Small stacking vase  
Kaki glaze with akae decoration  
7 x 6 x 6"  
HT383



Tomoo Hamada  
Tawara vase  
Black glaze with akae decoration  
7 x 6.5 x 4.75"  
HT380





Tomoo Hamada  
Vase  
Salt glaze with fluted decoration  
9.5 x 4.5 x 4.5"  
HT276

Vase  
Salt glaze with fluted decoration  
9 x 5.75 x 5.75"  
HT277

*“Take heed of the humble; be what you are by birthright;  
there is no room for arrogance.”*

SOETSU YANAGI, *THE UNKNOWN CRAFTSMAN*, 97





Tomoo Hamada  
*Plate*  
 Salt glaze with combed decoration  
 1.5 x 10.75 x 10.75"  
 HT390



Tomoo Hamada  
*Cross vase*  
 Salt glaze  
 8.75 x 10.5 x 5.5"  
 HT336

*Cross vase*  
 Blue glaze with akae decoration  
 9 x 10.5 x 5.5"  
 HT337



Tomoo Hamada  
 Large plate  
 Salt glaze  
 3.5 x 20.25 x 20.25"  
 HTI

*“Comparing my family to mountains, there is a mountain called Shoji in the Hamada mountains. There is also a mountain called Shinsaku and I am creating a mountain called Tomoo near Shinsaku. They are all in the same mountain range so they influence each other.”*

TOMOO HAMADA, RELATED VOICES, 7



Tomoo Hamada  
Sake cup  
Blue glaze with akae decoration  
2 x 3 x 3"  
HT428

Sake cup  
Blue glaze with akae decoration  
2 x 3.25 x 3.25"  
HT427



Tomoo Hamada  
Cube vase  
Kaki glaze with akae decoration  
11.5 x 6 x 4.75"  
HT265



Tomoo Hamada  
Bottle  
Black and kaki glaze with akae decoration  
12 x 8.25 x 5"  
HT132





Tomoo Hamada  
Plate  
Salt glaze  
1.75 x 14 x 14"  
HT351

*“Tomoo has integrated a modernist view, a form of constructivism seen in architecture where lines and angles are employed to provide areas or planes that carry colour or pattern.”*

PHIL ROGERS, *RELATED VOICES*, 6





Tomoo Hamada  
*Chawan*  
 Salt glaze with combed decoration  
 3.5 x 4.25 x 4"  
 HT396



Tomoo Hamada  
*Chawan*  
 Kaki glaze with akae decoration  
 3.5 x 4.5 x 4.5"  
 HT394



Tomoo Hamada  
*Stacking vase*  
 Kaki glaze with akae decoration  
 10.75 x 10 x 10"  
 HT341

**PUCKER GALLERY**

240 Newbury Street  
3rd floor  
Boston, MA 02116  
Phone: 617.267.9473  
Email: [contactus@puckergallery.com](mailto:contactus@puckergallery.com)

**GALLERY HOURS:**

Monday through Saturday  
10:00 AM to 5:30 PM  
Sunday 10:30 AM to 5:00 PM

We are open to all and taking the necessary precautions for visitor and staff safety. We welcome appointments to maximize visitor experience.

Pucker Gallery is a member of the Boston Art Dealers Association and the New England Appraisers Association.

**CREDITS:**

*Design:* Leslie Anne Feagley

*Editors:* Jeanne Koles and Jacqueline Belfield Gertner

*Photography:* John Davenport

© 2021, Pucker Gallery  
Printed in the United States  
by Modern Postcard

**REFERENCES:**

Hamada, Tomoo. *Respect & Renewal: Three Generations of Hamada Ceramics*. Boston: Pucker Art Publications, 2013.

Hamada, Tomoo. *Into the Present: The Ceramic Art of Tomoo Hamada*. Boston: Pucker Art Publications, 2015.

Leach, Bernard. *Hamada potter*. New York: Kodansha International Ltd., 1975.

Rogers, Phil. *Related Voices: Hamada, Three Generations*. Boston, Pucker Art Publications, 2011.

Yanagi, Soetsu. *The Unknown Craftsman: A Japanese Insight into Beauty*. New York: Kodansha International Ltd., 2013.

*Cover left:* Shoji Hamada  
*Obachi*, c. 1950

Black glaze with trailed decoration  
5.5 x 22.5 x 22.5"  
H40 (PG) with wooden box signed  
by Shinsaku Hamada

*Cover middle:* Shinsaku Hamada  
*Plate*

Kaki and black glazes  
2.5 x 14 x 14"  
HS68

*Cover right:* Tomoo Hamada  
*Plate*

Black and kaki glaze with akae decoration  
3.75 x 20.75 x 20.75"  
HT185

# ROOT & BRANCHES

## THREE GENERATIONS OF THE **HAMADA FAMILY**

**DATES:**

5 June through 11 July 2021

**ONLINE EVENTS:**

Please visit [www.puckergallery.com](http://www.puckergallery.com) for a list of virtual gatherings and events accompanying *Root & Branches*.



Tomoo Hamada  
*Vase*  
Celadon glaze with akae decoration  
10 x 10.75 x 10.75"  
HT186

Shoji Hamada  
*Jar*  
Iron brown glaze with angled sides and mouth rim and decorated with sgraffito and abstract brushwork  
5.25 x 5.75 x 5.75"  
H89

Shinsaku Hamada  
*Vase*  
Kaki glaze with akae decoration  
7.5 x 8 x 8"  
HS97

Please visit [www.puckergallery.com](http://www.puckergallery.com) to view current and past exhibition catalogues and subscribe to the *Pot of the Week* email list.