



# TOMORROW'S TALENT

Workforce & Education Summit

2017 Agenda

55,000  
Degrees



**GREATER LOUISVILLE INC.**  
The Metro Chamber of Commerce

# TOMORROW'S TALENT SUMMIT

8:30 AM Registration and Breakfast Open View Pointe Hall - 6th Floor

---

9:00 AM Introduction and Welcome View Pointe Hall - 6th Floor

---

Emcee **Theresa Reno-Weber**, President/CEO, Metro United Way

**Paul Costel**, JPMorgan Chase

**Greg Fischer**, Mayor of Louisville

9:30 AM Keynote Address View Pointe Hall - 6th Floor

---

**Richard V. Reeves**, Brookings Institution Senior Fellow, Economic Studies, and  
Co-Director Center on Children and Families

*How "opportunity hoarding" among the upper middle class makes it harder  
for others to rise up to the top rung*

10:15 AM Morning Coffee Break

---

10:30 AM View Pointe Hall - 6th Floor

---

*College Affordability*

**Mary Gwen Wheeler**, Executive Director, 55,000 Degrees

*Workforce Update*

**Michael Gritton**, Executive Director, KentuckianaWorks

*Academies of Louisville*

**Dr. Marty Pollio**, Acting Superintendent, Jefferson County Public Schools

11:15 AM Concurrent Breakout #1 - *College Promise Panel* Auditorium - 2nd Floor

---

**Matt Caffrey**, Director, Engagement and Advocacy, College Promise Campaign

**Angela Cammack**, Deputy Director, College Promise Campaign

**Midori Morikawa**, Deputy Director of Workforce and Policy Development  
Mayor's Office of Workforce Development in Boston

**Monica Rodriguez**, Manager, Detroit Promise Path, Detroit Regional Chamber

**Vinh Trinh**, Principal, Oakland Unified School District

11:15 AM Concurrent Breakout #2 - *Employer Perspective* 6th Floor

---

**Roger Cude**, Enterprise V.P., Talent and Organization Development, Humana, Inc.

*Strategies for developing a local talent pipeline*

**Dr. Diana Han**, Chief Medical Officer, GE Appliances

*The Opioid Crisis from an employer perspective*

**Kristi Putnam**, Program Manager - Kentucky HEALTH Medicaid Waiver Project,  
Kentucky Cabinet for Health and Family Services

*What to expect from the new Medicaid waiver*

---

12:00 PM Networking Lunch View Pointe Hall - 6th Floor

---

12:30 PM Keynote Address View Pointe Hall - 6th Floor

**Anthony Smith**, Executive Director, Cities United

*How dreams deferred become dreams realized*

---

1:15 PM Lightning Talks View Pointe Hall - 6th Floor

**Khaled Alsabbagh**, student at Newcomer Academy, Jefferson County Public Schools

*A young person's journey from Syria to the U.S.; his experiences and dreams for the future*

**Ali Muhammad**, Founder and CEO, StoryWood Bowties

*Overcoming obstacles to become a young entrepreneur*

**Kim Moore**, Case Manager, Reimage program

*The joy of being an effective messenger*

**Kate Shirley Akers, Ph.D.**, Executive Director, Kentucky Center for Education and Workforce Statistics

*What the data tells us about employment and education in Kentucky*

**Dr. Brandy Kelly Pryor**, Director, Center for Health Equity, Louisville Metro  
Department of Public Health and Wellness

*Relevant findings from the new Health Equity Report*

**Gill Holland**, Portland Investment Initiative

*How "Louisville Goes to College" can be part of the solution*

---

2:00 PM Closing Remarks View Pointe Hall - 6th Floor

**Greg Fischer**, Mayor of Louisville

*All attendees are welcome to visit the exhibit floors following the conclusion of the Summit.*

# CO-HOSTS



**Mary Gwen Wheeler** is an education policy strategist and leader of organizations and initiatives that strengthen communities through educational opportunities. She currently serves as the Executive Director of 55,000 Degrees, a multi-sector public-private partnership dedicated to increasing education attainment in the Louisville region. Previously, she served as the Mayor's Sr. Advisor for Education and Youth for Louisville Metro Government, leading policy development and implementation of education and youth initiatives. In Jerry Abramson's first term as Metro Mayor, she served as Secretary of the Cabinet for Health and Family Services. Ms. Wheeler was appointed by Governor Steve Beshear to the Kentucky Board of Education in June, 2010, and in 2017 she was elected by her peers to be Chair of the Board.

With a B.A. in American Studies and a Masters in Public and Private Management from Yale University, Ms. Wheeler also has experience in family literacy, job training, non-profit management, strategic planning, teaching and international development. This included 10 years with the National Center for Family Literacy as a project manager and vice president of planning and development, and today she serves as a director on the NCFL board.



**Kent Oyler** joined Greater Louisville Inc. in June 2014. He leads GLI, the metro chamber of commerce, in accelerating the regional economy; championing the entrepreneurial and start-up community; attracting, retaining and preparing a skilled and talented workforce; and driving policy efforts aimed at creating a more business-friendly environment. Prior to GLI he served as CEO of OPM Services, Inc., a financial-services and investment firm he founded in 1992. After earning business and MBA degrees, Kent embarked on career as a serial entrepreneur, launching 19 new ventures across a variety of industries. In 1997 he co-founded broadband internet provider High Speed Access Corp. which went public in a 1999 IPO that still ranks as Kentucky's largest.

Kent has also served on the board of Leadership Louisville, Junior Achievement, Kentucky Science Center, Metro YMCA, University of Louisville, Venture Connectors, Tocqueville Society, KentuckianaWorks, Downtown Development Corp., and the Metro Police Foundation, among others. Kent has been recognized as Cashflow Magazine's Treasurer of the Year, E&Y Master Entrepreneur, Kentucky Entrepreneurial Hall of Fame, and Business First's Small Business Leader of the Year. He resides in Louisville with his wife Kathy and has adult daughters.

# CO-HOSTS



**Michael Gritton** has served as the Executive Director of KentuckianaWorks, the region's Workforce Development Board, for 15 years. Leveraging federal, state and local government dollars as well as private philanthropic grants, KentuckianaWorks funds and oversees programs that build a stronger community one person at a time through the dignity of work.

Gritton's tenure has been marked by innovations that create opportunities for individuals to improve their economic competitiveness. These include: SummerWorks, a national award-winning summer jobs effort that helped over 5,200 16-21 year olds in Louisville in 2017; A cutting-edge effort to train and place hundreds of new software coders called Code Louisville that was celebrated in April 2015 in a visit from President Barack Obama; and the national award-winning Kentucky Manufacturing Career Center that has trained and placed more than 1,000 new manufacturing workers, many of whom earned the "stackable credentials" recommended by the National Association of Manufacturing.

Gritton is a Louisville native who spent 20 years living in New York, Boston, and elsewhere before returning "home" in 2000. He is a graduate of Pleasure Ridge Park High School, Duke University and Columbia Law School.

Thank You to Our Sponsors for Making This Event Possible

**CHASE** 

Gold Level Sponsor



Silver Level Sponsor



**Theresa Reno-Weber** is the new President & CEO of Metro United Way as of January 2017. She most recently served as the first Chief of Performance & Technology for Louisville Metro Government, where she oversaw the Office of Performance Improvement & Innovation (OPI2), the Department of Information Technology (DoIT) and the Department of Human Resources (HR); coordinating the people, processes and technology required to improve the way government works and the results they deliver to the community. Along with a talented team of professionals, Theresa launched Louisville's internationally-recognized LouieStat program.

She has spoken both internationally and nationally on performance management, data-driven decision making, and culture change and co-authored a chapter in the book *Beyond Transparency*. In 2015, *Government Technology* named her one of the Top 25 Doers, Dreamers & Drivers. In 2016, Theresa received the Best of Kentucky Visionary Award.

A graduate of the United States Coast Guard Academy and a former Lieutenant in the U.S. Coast Guard, she deployed to the Persian Gulf. She was on the first Coast Guard Cutter to circumnavigate the globe and served as a Sea Marshall post 9-11. Theresa earned a Master's in Public Policy from Harvard's Kennedy School of Government and previously worked as a consultant with McKinsey & Company. She serves on the Board of Directors for the Girl Scouts of Kentuckiana, Actors Theatre, and The Drucker Institute.

Theresa lives in Louisville's Highlands neighborhood with her husband and three children.

# KEYNOTE SPEAKERS



**Richard V. Reeves** is a senior fellow in Economic Studies and co-director of the Center on Children and Families. His research focuses on social mobility, inequality, and family change. Prior to joining Brookings in 2013, he was director of strategy to the UK's Deputy Prime Minister.

Richard's various publications for Brookings include his latest book *Dream Hoarders: How the American Upper Middle Class Is Leaving Everyone Else in the Dust, Why That Is a Problem, and What to Do about It*. He is also a contributor to *The Atlantic*, *National Affairs*, *Democracy Journal*, *Wall Street Journal* and *New York Times*.

In September 2017, *Politico* magazine named Richard one of the top 50 thinkers in the U.S. for his work on class and inequality. He is a member of the Government of Canada's Ministerial Advisory Committee on Poverty, and also teaches at the McCourt School of Public Policy at Georgetown University.

Richard has a BA from Oxford University and a PhD from Warwick University. Richard has received an honorarium from speaking from McKinsey & Company.



**Anthony D. Smith** is the Executive Director of Cities United, a national mayor-led initiative focused on eliminating the violence in American cities related to African American men and boys. Before joining Cities United, Anthony led the Office for Safe and Healthy Neighborhoods for Mayor Greg Fischer and the city of Louisville.

Anthony is committed to creating positive outcomes for all youth, with a focus on young black men and boys. Throughout his professional career, Anthony has made it a priority to cultivate up and coming leaders.

Anthony was born and raised in Louisville and earned his BA from Northern Kentucky University. He is married to Devonya and has three boys – Kendrick, Haig and Chase.

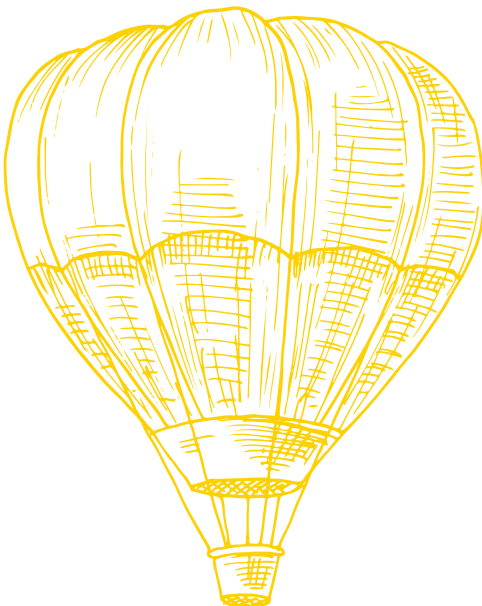


**Dr. Martin “Marty” Pollio** assumed the role of acting superintendent of the Jefferson County Public School (JCPS) District on July 2, 2017.

For 20 years, Dr. Pollio has dedicated his career to serving the students of JCPS. He is a long-time administrator and educator whose focus is improving culture and climate across the district, increasing student achievement, and implementing deeper learning strategies to make lessons come alive for students and teachers.

Dr. Pollio began his career with JCPS in 1997 as a social studies teacher at Shawnee High School. He went on to serve as a teacher and assistant principal at Waggener High School before taking the helm as principal of Jeffersontown High School from 2007-2015. Dr. Pollio was the principal of Doss High School when he was selected as the acting superintendent.

Dr. Pollio received his undergraduate degree from Indiana University and his master’s degree from Eastern Kentucky University. He earned his doctorate from the University of Louisville in 2012. Dr. Pollio and his wife, Jessica, are the parents of one daughter who is a JCPS student.





# BREAKOUT SPEAKERS



**Matt Caffrey** is the Director of Engagement and Advocacy with the College Promise Campaign, the movement for free community college. Matt has built a career organizing for candidates and causes that promote social, economic, and environmental justice.

He is an alumnus of The Ohio State University where he organized his peers to register thousands of student voters. At Environment Ohio, Matt worked to build grassroots power to support clean air and beat back attacks on Ohio's clean energy future. In 2012, Matt joined President Obama's reelection campaign, organizing across communities and leading a team that registered 14,000 student voters in just six weeks.

Before coming to the College Promise Campaign, Matt was Data and Training Director for Enroll America in Ohio where he helped build a program that, with a coalition of partners, helped hundreds of thousands of Ohioans sign up for health coverage.



**Angela Cammack** is the Deputy Director for the College Promise Campaign. In her role, she guides the strategic direction and execution of CPC's outreach, communications, research, policy, and fund development efforts.

As the Deputy Director, Cammack manages CPC staff and works with a wide range of policymakers, scholars, practitioners, and philanthropic leaders to promote the growth and success of the College Promise movement in local communities and states.

Cammack has a Master's Degree from Harvard University where she gained expertise in state policy analysis, systemic reform to improve student success, identification of best practices, and grants development and oversight. Previously, she served as CPC's Director of Policy, Research, & Development.

# BREAKOUT SPEAKERS



**Roger Cude** is Enterprise Vice President, Talent and Organization Development for Humana, Inc. He joined Humana in September, 2013 to lead the talent and organization development functions. He currently has responsibility for HR Business Partners, talent management, organization development, performance management, associate engagement and talent acquisition. Roger is also a member of Humana's Inclusion and Diversity Council.

Before joining Humana, Roger served as Senior Vice President, Global Talent Management for Wal-Mart. In this role, he was responsible for executive development, Leadership University, executive succession planning, officer selection and Corporate Learning Services. Roger has also held positions as Senior Vice President, Learning and Leadership Development at Bank of America, and as Vice President, Human Resources for Williams, Inc.

Roger is Chair of Business Leaders for Education, Greater Louisville Inc. He holds a Master's degree from Pepperdine University and a Bachelor's degree from Southern Utah University.



**Diana Han, MD** leads the Health Services team at GE Appliances, a Haier company, with responsibility for onsite delivery of occupational and preventive health services and programs, employee health benefits, leave management, and wellness and health promotion.

Prior to joining GE Appliances, Diana enjoyed a wide-ranging career in healthcare consulting, clinical practice, and healthcare administration at a series of leading institutions, including Partners Healthcare, the Advisory Board Company, Carewise, Baptist Health, and Humana.

# BREAKOUT SPEAKERS



**Midori Morikawa** currently serves as the Deputy Director of Workforce and Policy Development at the Mayor's Office of Workforce Development for the City of Boston.

In her role, Ms. Morikawa designed and implemented the Mayor's Tuition Free Community College initiative in 2016, making three years of community college education tuition-free for eligible Boston high school students. In addition, in 2017 Ms. Morikawa secured a partnership with Massachusetts' Executive Office of Education to provide tuition-free four year degree pathways for low-income Boston residents. She is also responsible for developing policy priorities for the City of Boston's workforce development sector, overseeing the dissemination of over \$5 million in workforce development funds.

Ms. Morikawa has over 10 years of experience in strategic planning, program development, and program evaluation. Prior to her current role, she worked as the Director of Planning at Action for Boston Community Development, one of the largest human service agencies in New England.

Ms. Morikawa received her Master of Arts in Sustainable International Development from the Heller School for Social Policy and Management at Brandeis University and a Bachelor of Arts degree from Clark University.



**Kristi Putnam** is a 21-year veteran in government change management and innovation, with leadership and front line experience in family/child welfare services, advocacy, education, communications, and policy. A native of Florida, Kristi moved to Kentucky in 2015, and joined the Cabinet for Health and Family Services in 2016.

Previously, she has worked in the Florida Departments of Education, Children & Families, the K-12 Public School system, Executive Office of the Governor, and the U.S. Department of Veterans Affairs, as well as for child advocacy agencies and in private industry. She is currently the Program Manager for the Kentucky HEALTH Medicaid Waiver Project, the initiative that Kentucky has proposed to the Center for Medicaid and Medicare Services as a means to transform Kentucky's Medicaid system.

Kristi and her husband have three daughters, and they are happily resettled in Louisville from Tallahassee, Florida.

# BREAKOUT SPEAKERS



**Monica Rodriguez** is the manager for the Detroit Promise Path, a student success initiative for students participating in the Detroit Regional Chamber's Detroit Promise program. Rodriguez has been with the Detroit Promise through its initial approach as a tool for college access, to its evolution as a respondent to student success.

The Detroit Promise Path is a student success model directed at five local community colleges that offer tuition-free enrollment to eligible students. Rodriguez was charged with the implementation of the Detroit Promise Path in collaboration with the MDRC, a nationally recognized education and social policy research organization. In the fall of 2017, the Detroit Promise Path launched its second cohort; through the efforts of five full-time campus coaches and numerous external partners, more than 800 Detroit Promise students are currently supported in their pursuit of a postsecondary education.

Before joining the Chamber, Rodriguez worked as a high school teacher for high-risk and adjudicated youth. Prior to teaching, she worked on multiple grassroots education initiatives, working to transform education from the inside out. Rodriguez earned her bachelor's degree in organizational communication from the University of Southern California while working at a local educational nonprofit. After graduating, she returned home to metro Detroit to continue her education at the University of Michigan, earning a master's degree in urban pedagogy.



**Vinh Trinh** is leading the Kindergarten to College (K2C) program of the Oakland Promise, which will open college savings accounts for all kindergarten students in Oakland Unified School District. Vinh is building partnerships among principals, teachers and parents to support a college going culture starting in our elementary schools and to encourage saving for college. Vinh also is coordinating work to establish Future Centers in middle and high schools to support students with college applications, scholarship opportunities, and financial aid completion in order to access post-secondary education.

Vinh is an educator with 19 years of experience with OUSD as a teacher, assistant principal and principal, ranging from elementary school through high school. He immigrated to America from Vietnam when he was 5 years old after spending 8 months in a refugee camp in Malaysia. He received his BA from University of California at Berkeley and Masters from Harvard Graduate School of Education.

# LIGHTNING TALK SPEAKERS



**Kate Shirley Akers, Ph.D.** is the executive director for the Kentucky Center for Education and Workforce Statistics (KCEWS). As executive director, Dr. Akers uses her passion for education and Kentucky's workforce along with her extensive knowledge of statistics and large data systems to oversee the daily and strategic planning for the organization.

Dr. Akers' primary research areas are statistics, measurement and quantitative research methods for the social sciences including evaluation and analysis of longitudinal data. As the deputy executive director, Dr. Akers served as the lead researcher within the office, coordinating the development of the Center's research agenda and responding to information requests.

Prior to her role at KCEWS, Dr. Akers worked as the lead researcher in the Office of the Commissioner for the Kentucky Department of Education, as a research analyst with the Kentucky P-20 Data Collaborative (now KCEWS) and as an agency data fellow with the Strategic Data Project.

Dr. Akers is a native Kentuckian and graduate of Mercer County High School, Transylvania University and the University of Kentucky. She joined the KCEWS office in 2011.



**Khaled Alsabbagh** moved to the U.S. in May 2017 at the age of 18 from Egypt, where his family lived after fleeing chemical attacks near Damascus, Syria. His interests include learning as much as he can in America, then returning to Syria to help Syrians. He is considering medicine.

# LIGHTNING TALK SPEAKERS



**Gill Holland** is a businessman, community investor, and developer now focused on the historic Portland neighborhood in West Louisville. With the Portland Investment Initiative, Gill is working on rehabilitating historic shotgun houses and developing a variety of mixed-use spaces.

Gill is also a film producer, music and book publisher, and the author of *Louisville Counts!* and *L is for Louisville*. He has a Juris Doctor and a Bachelor of Arts from the University of North Carolina at Chapel Hill.



As Director of Health Policy & Practice and the Center for Health Equity, **Dr. Brandy Kelly Pryor** is helping Louisville make great strides in becoming a city where everyone has a chance of living a healthy life, no matter where they live, work, play or pray.

Health Policy & Practice, a section of Louisville Metro Department of Public Health & Wellness, equips, trains and advocates for equitable policies and practices across government departments, community groups, organizations and corporations to advance health equity across Louisville.

She also currently serves as an assistant professor at the University of Louisville School of Public Health and Information Sciences where she teaches Policy and Advocacy.

# LIGHTNING TALK SPEAKERS



**Kimberly Moore** is a Case Manager for the Reimage program which reduces youth violence by intervening with teens and young adults involved in the court system. Based in Louisville's Russell neighborhood, she uses her "Ph.D from the streets" to change lives through compassion and a strong belief in people. She has been advocating for young people for the past 15 years.

Kimberly has overcome many personal obstacles and has spoken on a national level regarding domestic violence, addiction and incarceration. She has served on the boards of the Reentry Task Force, and Charity Hope Love Faith, a non-profit addressing the needs of young people. She also participates in the Stop Teen Violence Program created by the Louisville Metro Police Department.

A mother of four children and grandmother of five, she works hard to end violence because she wants her grandsons to grow up in a safer city.



**Ali Muhammad** is the founder of StoryWood Bowties, a business venture that was conceived in a trades program called the Samuel Plato Academy located at Louisville's African American Heritage Center. While learning the skills necessary to renovate national historic register buildings, Ali began using historic woods from project houses to hand craft different items.

An internship through the Kentucky Youth Career Center at a local makerspace gave him additional skills and he narrowed his focus to handcrafting wooden bowties from historic buildings and doing archived based research to tell their stories. Now with salvaged woods and stories from places like Whiskey Row and Secretariat's barn, the business is thriving, attracting consumers and media coverage. The company is currently housed at Louisville's WaterStep where sales of the bowties help fund the organization's mission of saving lives through safe water.

Ali has overcome a number of life hurdles including growing up in foster care and state custody until he was 18. Through the help of the KentuckianaWorks College Access Center, he has enrolled in Jefferson Community & Technical College.



**55,000**  
**Degrees**



**[GLI]**

**GREATER LOUISVILLE INC.**  
The Metro Chamber of Commerce