

Mail and Messenger Services

Mail and messaging that's always on time.

Consider It Done.™



When it comes to mail and messaging, GLC Business Services takes the entire process to a whole new level of efficiency. We go above and beyond to ensure prompt, precise, cost effective processing and delivery of your critical documents.

GLC Delivers.

- Professionally prepare, package and distribute all letters and parcels
- Stay current with ever changing postal regulations
- Manage all aspects of incoming and outgoing mail to your firm's specifications
- Process USPS, FedEx, UPS, and other courier shipments
- Negotiate and secure best rates and service with local messengers and couriers
- Process all incoming and outgoing mail and messenger deliveries
- Improved productivity

Our Expertise. Your Advantage.

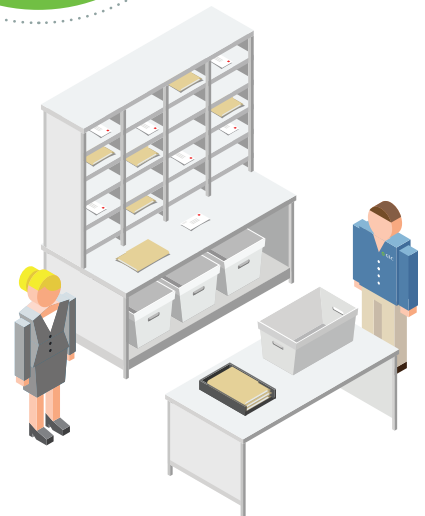
With the right strategy, our full complement of support services can transform your day-to-day operations.

Visit GLCStrategies.com for more information.

Keeping you ahead of the game.

We continually evaluate, monitor and report on your firm's mail processing system—if there's a way to improve workflow, delivery and costs, we'll find it.

Whatever. Whenever. It all adds up to the GLC difference.



To learn more about what the GLC difference could mean for your firm, give us a call at 866.258.3910.