



JILL KRUTICK

JANUARY — JUNE 2018



JILL
KRUTICK
FINE
ART

JILL KRUTICK FINE ART IS BORN



Aurora Borealis 3, 2018

Acrylic on canvas, 72 x 144 inches

3 panels, 72 x 48 inches each

Aurora Borealis Series

Welcome to my studio. The journey here was a circuitous one, but one that makes infinite sense if you know me.

As the daughter of art-loving parents, I was drawn to the arts from a very young age. After years of classical piano training and painting lessons with a local neighbor in Roslyn, New York I decided that art would be my lifelong companion. I focused on excelling in school, pursuing an independent lifestyle with a vengeance, but always stayed connected to my artistic nature. Following my dynamic career as an equity analyst and corporate media executive, I reached a point where my children were old enough for me to gift myself a quiet place to reflect and to see how far my artistic wings could take me.

My prior business experiences became a useful prelude to my life as a full-time artist, not only in the obvious business skills area, but also in the development of my creative identity. For example, iconic media that defines companies like Walt Disney and Warner Music Group, inspired animated color schemes and captivating characters from which my painting styles first emerged. Another facet of my work projects family eco-adventure trips and go-to childhood doodles, songs, colors, and movies.

From the atmospheric Shangri La, Dreamscape, and Aurora Borealis Series to Van Gogh and Monet-inspired Abstract Landscapes, to the more rigid Geometric and Ice Cube style of paintings, and ultimately to the free form Swirl series, my prolific artistic visions draw on balancing shapes, movement, light, texture and color. Painting provides me with an outlet to embrace my spirit, untangle my thoughts, and connect with others in ways that words cannot.

I continue to reach for the stars, as I always have in life, but am now pursuing a different constellation—Fine Arts.

With that, I hope you enjoy the canvases before you, which were all created in the six months since moving into this new, special studio space.

Above: **Shangri La 7**, 2018, Acrylic on canvas, 30 x 30 inches. *Shangri La Series*

CRITICAL ACCLAIM

HIGHLIGHTED QUOTES FROM CRITICS & WRITERS

For complete essays, please visit JillKrutickFineArt.com/critical-acclaim

“It is the creative power implicit in Krutick’s imaginative response to nature’s innate aesthetics, at their most ingeniously and irresistibly dynamic in the flowing ocean. One might say she abstracts the creative flow of nature from its material manifestation in moving water, treating it as an aesthetic, a phenomenon in itself. For Krutick, fearlessly creating art is the way ‘the mind can realize the proper sublimity of its own destiny as surpassing nature itself,’ as Kant suggests.”

—Donald Kuspit
Leading Art Critic



“Needless to say, Jill Krutick has not had a conventional art career. An effective and respected media analyst and Wall Street executive for over 20 years, focusing on the entertainment and leisure industries, she was rated the number one Entertainment Analyst by Fortune magazine in 2001, before she dedicated herself to her art a decade later. But it’s no news that the art world is changing. So far as artists go, the guild system that has ruled since the classical world is breaking down. One increasingly sees examples of what might once have been considered the ‘Outsider Artist’ trajectory, namely individuals catapulting themselves into art-making after a life doing something wholly separate. Jill Krutick is one such remarkable transformation.”

—Anthony Haden-Guest
Leading Art Critic

“Krutick has expanded upon her studies and has made remarkable progress for someone who began working full time less than a decade ago. She has been included in many group exhibitions and has already had several solo exhibitions. Patrons have commissioned her work and a wide range of important collectors now own her paintings. Inspired by earlier female artists such as Helen Frankenthaler and Lee Krasner, she persists in finding her place in the art world. Having fought her way to leadership and success on Wall Street and in the corporate world, Krutick has found the art world more welcoming because her predecessors fought and won a place for women artists. With her sophisticated business background, Krutick marries art and management and thus is savvy about developing and advancing her career.”

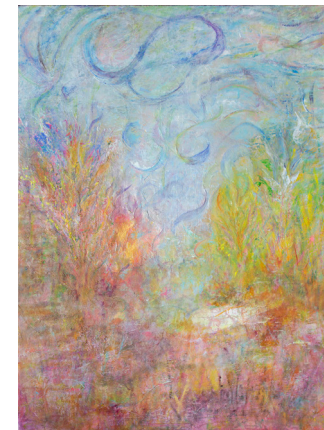
—Annette Blaugrund, Ph.D.
Independent Curator,
Former Director of the National Academy Museum



Orchid, 2018
Acrylic on canvas, 48 x 72 inches
Ice Cube Series



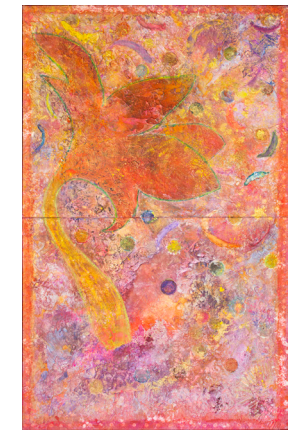
Great Barrier Reef, 2018
Acrylic on canvas, 40 x 30 inches
Abstract Landscape Series



Pink Field 2, 2018
Oil on canvas, 40 x 30 inches
Abstract Landscape Series



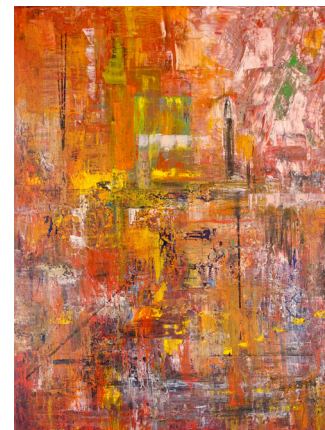
Sea Sparkle, 2018
Oil on canvas, 36 x 48 inches
Abstract Landscape Series



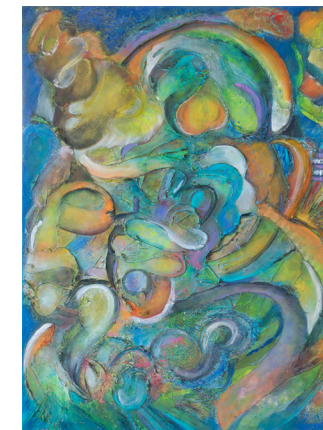
Chicka Chicka, 2018
Acrylic on canvas, 96 x 60 inches
2 panels, 48 x 60 inches each.
Abstract Landscape Series



Dance of the Caterpillars, 2018
Acrylic on canvas, 72 x 120 inches
2 panels, 72 x 60 inches each
Swirl Series



Cityscape, 2018
Oil on canvas, 40 x 30 inches
Geometric Series



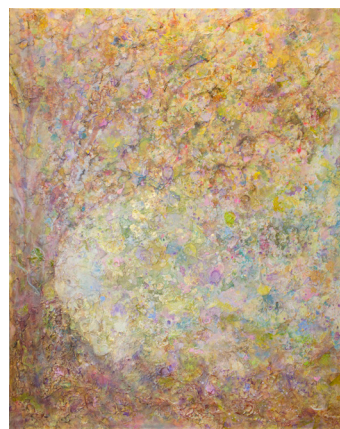
Whoville, 2018
Acrylic on canvas, 40 x 30 inches
Swirl Series



Phoenix, 2018
Acrylic on canvas, 60 x 96 inches
2 panels, 60 x 48 inches each
Swirl Series



Dreamscape Burst, 2018
Acrylic on canvas, 72 x 48 inches
Detail on Cover
Dreamscape Series



The Giving Tree 4, 2018
Acrylic on canvas, 60 x 48 inches
Abstract Landscape Series



Stairway to Heaven 2, 2018
Oil on canvas, 40 x 30 inches
Abstract Landscape Series



Seahorse, 2018
Acrylic on canvas, 72 x 48 inches
Swirl Series



The Journey, 2018
Acrylic on canvas, 72 x 48 inches
Swirl Series



Ice Cube Hearth, 2018
Oil on canvas, 36 x 36 inches
Ice Cube Series



 JILL
KRUTICK
FINE
ART

425 MOUNT PLEASANT AVENUE, 2ND FLOOR, MAMARONECK, NEW YORK, 10543

T: 914.522.0420 | E: jsk@jillkrutickfineart.com

www.jillkrutickfineart.com